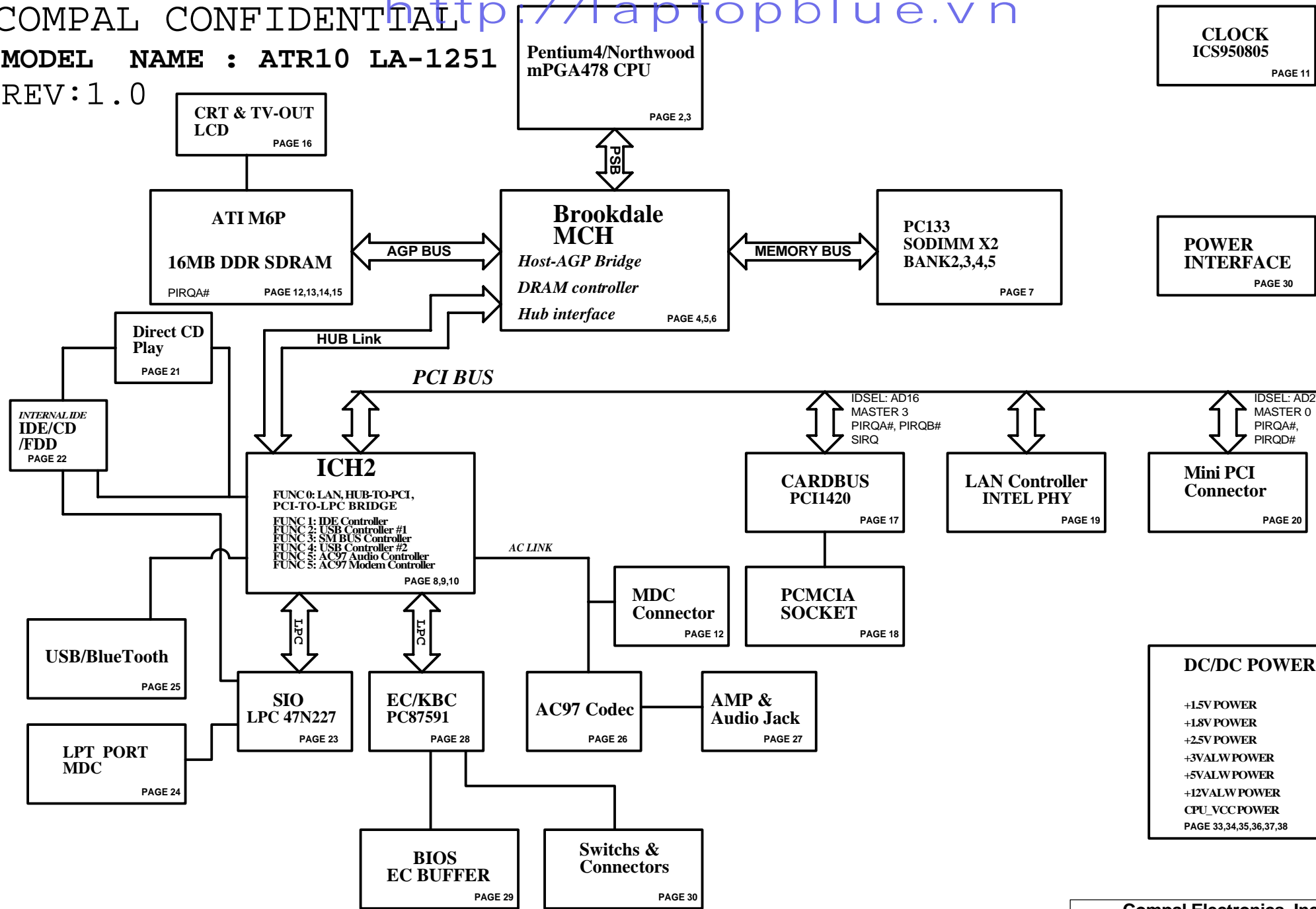
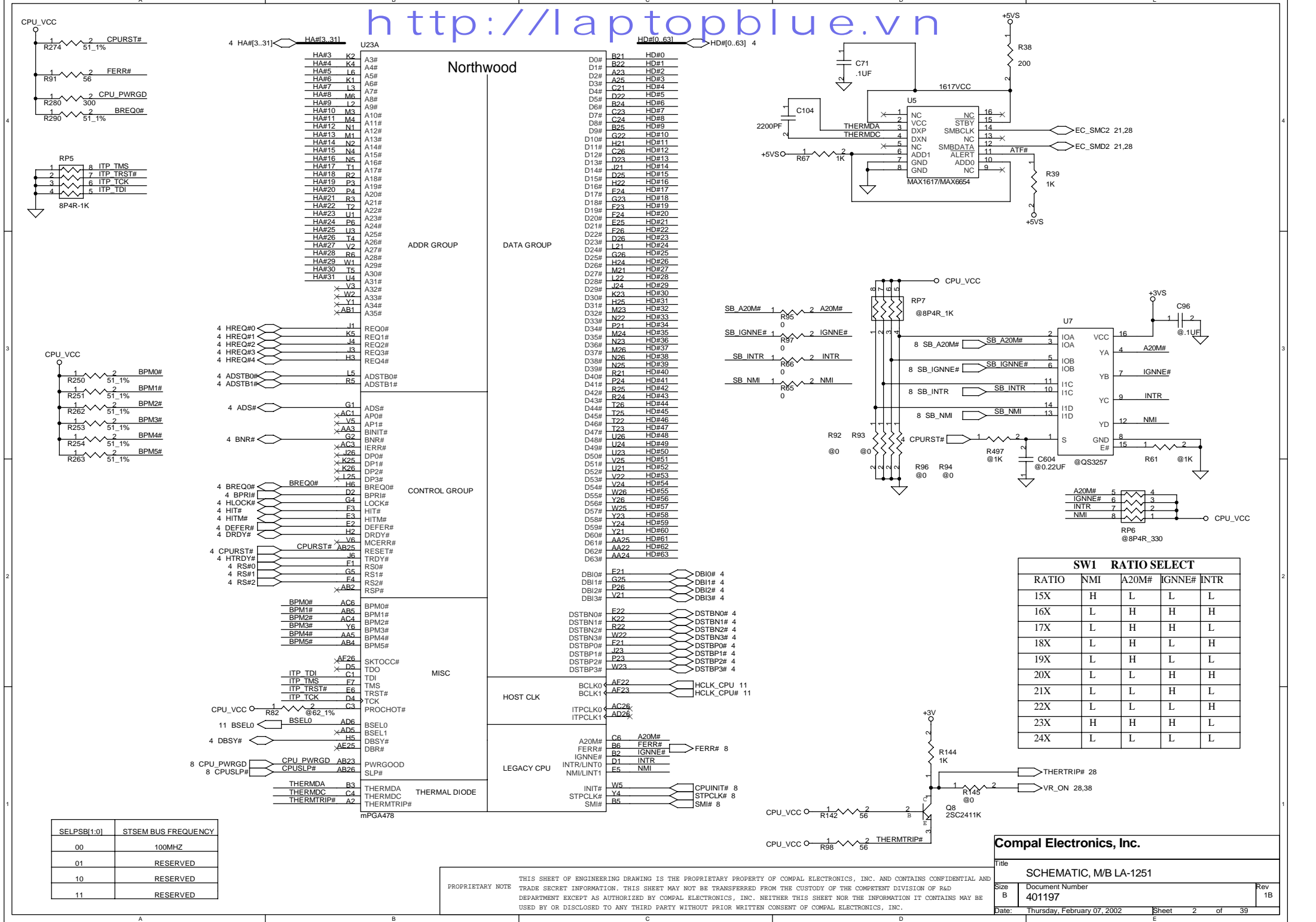


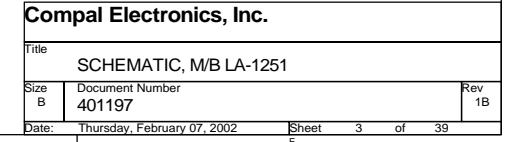
MODEL NAME : ATR10 LA-1251
REV:1.0

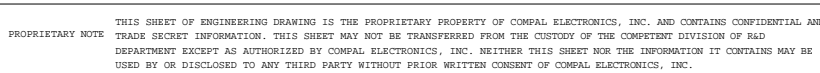


PROPRIETARY NOTE THIS SHEET OF ENGINEERING DRAWING IS THE PROPRIETARY PROPERTY OF COMPAL ELECTRONICS, INC. AND CONTAINS CONFIDENTIAL AND TRADE SECRET INFORMATION. THIS SHEET MAY NOT BE TRANSFERRED FROM THE CUSTODY OF THE COMPETENT DIVISION OF R&D DEPARTMENT EXCEPT AS AUTHORIZED BY COMPAL ELECTRONICS, INC. NEITHER THIS SHEET NOR THE INFORMATION IT CONTAINS MAY BE USED BY OR DISCLOSED TO ANY THIRD PARTY WITHOUT PRIOR WRITTEN CONSENT OF COMPAL ELECTRONICS, INC.

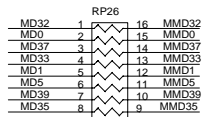
Compal Electronics, Inc.			
Title		SCHEMATIC, M/B LA-1251	
Size	Document Number	Rev	
B	401197	1B	
Date:	Thursday, February 07, 2002	Sheet	1 of 39



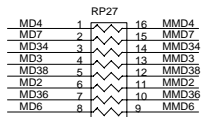




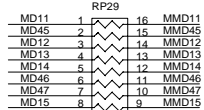
7 MD[0..63] MD[0..63]



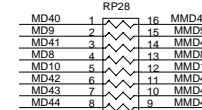
16P8R-22



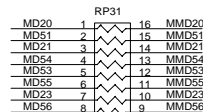
16P8R-22



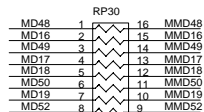
16P8R-22



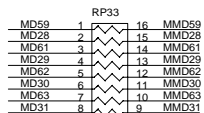
16P8R-22



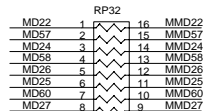
16P8R-22



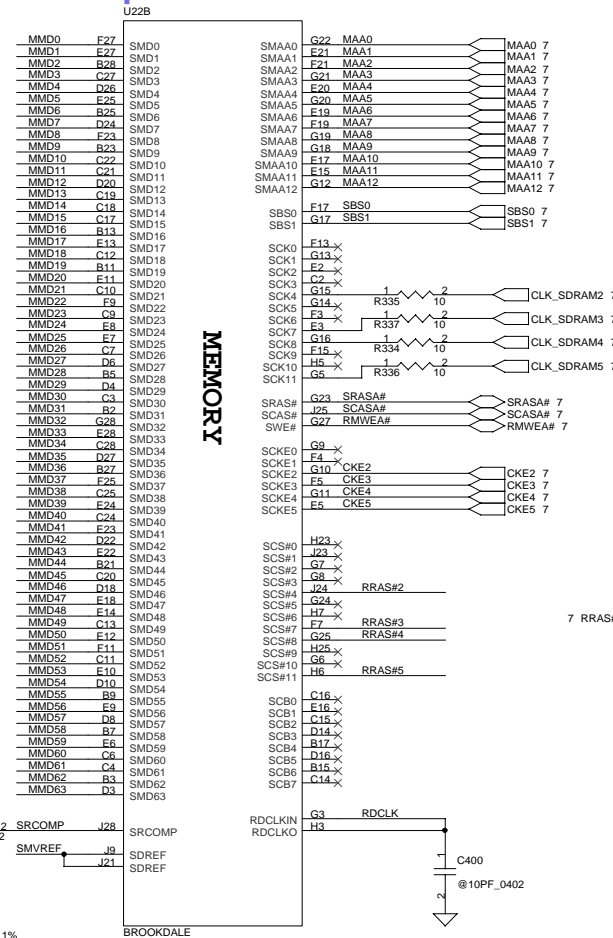
16P8R-22



16P8R-22

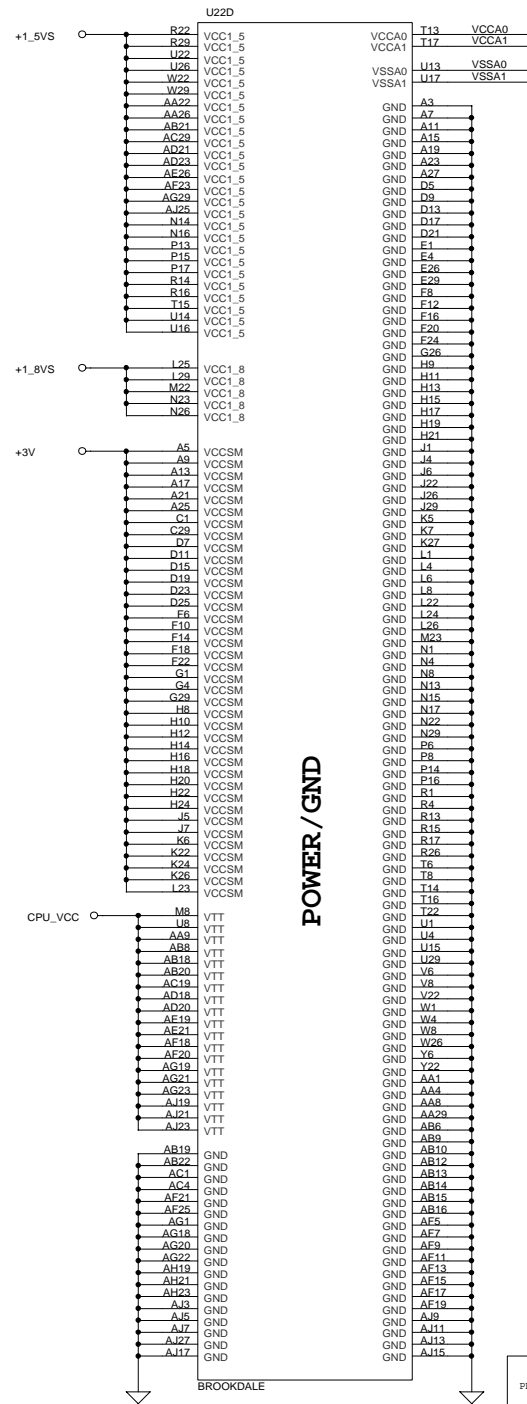


16P8R-22

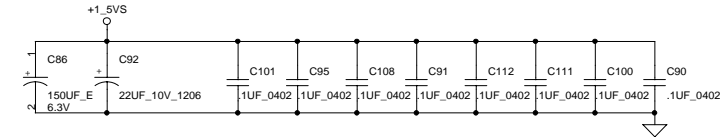
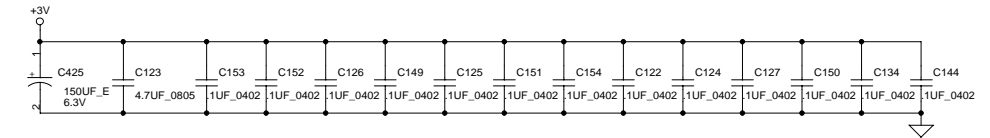
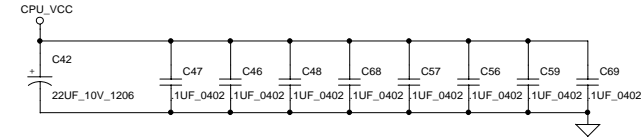
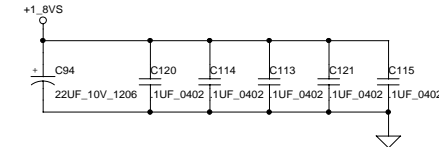
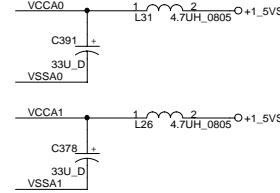


THIS SHEET OF ENGINEERING DRAWING IS THE PROPRIETARY PROPERTY OF COMPAL ELECTRONICS, INC. AND CONTAINS CONFIDENTIAL AND PROPRIETARY INFORMATION. THIS SHEET MAY NOT BE TRANSFERRED FROM THE CUSTODY OF THE COMPETENT DIVISION OF R&D DEPARTMENT EXCEPT AS AUTHORIZED BY COMPAL ELECTRONICS, INC. NEITHER THIS SHEET NOR THE INFORMATION IT CONTAINS MAY BE USED BY OR DISCLOSED TO ANY THIRD PARTY WITHOUT PRIOR WRITTEN CONSENT OF COMPAL ELECTRONICS, INC.

Compal Electronics, Inc.		
Title	SCHEMATIC, M/B LA-1251	
Size	Document Number	Rev
B	401197	1B
Date:	Thursday, February 07, 2002	Sheet 5 of 39



POWER / GND



PROPRIETARY NOTE

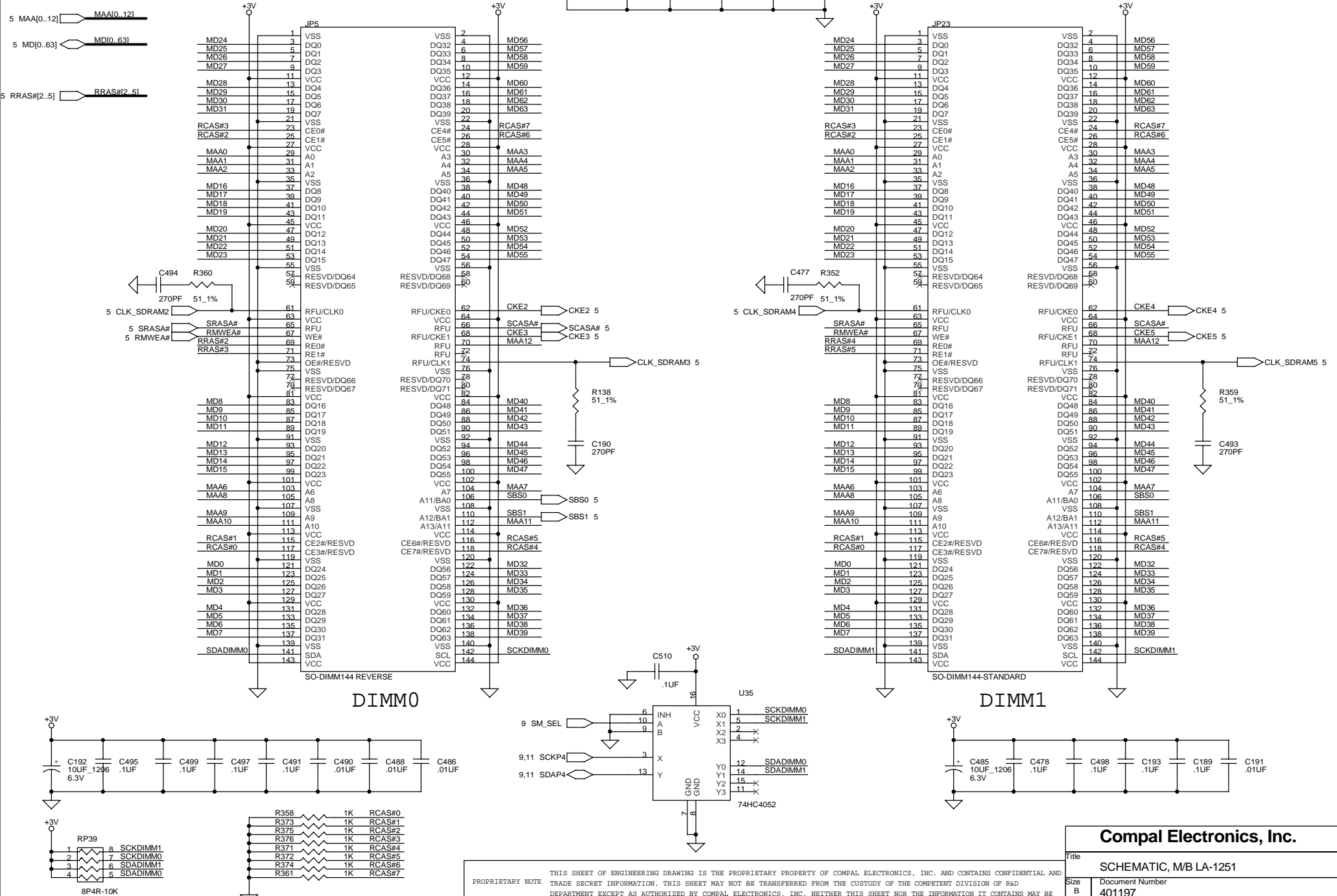
THIS SHEET OF ENGINEERING DRAWING IS THE PROPRIETARY PROPERTY OF COMPAL ELECTRONICS, INC. AND CONTAINS CONFIDENTIAL AND TRADE SECRET INFORMATION. THIS SHEET MAY NOT BE TRANSFERRED FROM THE CUSTODY OF THE COMPETENT DIVISION OF R&D DEPARTMENT EXCEPT AS AUTHORIZED BY COMPAL ELECTRONICS, INC. NEITHER THIS SHEET NOR THE INFORMATION IT CONTAINS MAY BE USED BY OR DISCLOSED TO ANY THIRD PARTY WITHOUT PRIOR WRITTEN CONSENT OF COMPAL ELECTRONICS, INC.

Compal Electronics, Inc.			
Title		SCHEMATIC, M/B LA-1251	
Size	Document Number		Rev
	401197		
Date:	Thursday, February 07, 2002	Sheet	6 of 39

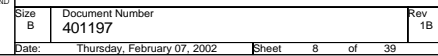
SO-DIM 144 PINS
RAM MODULE CONN.

BANK 2/3

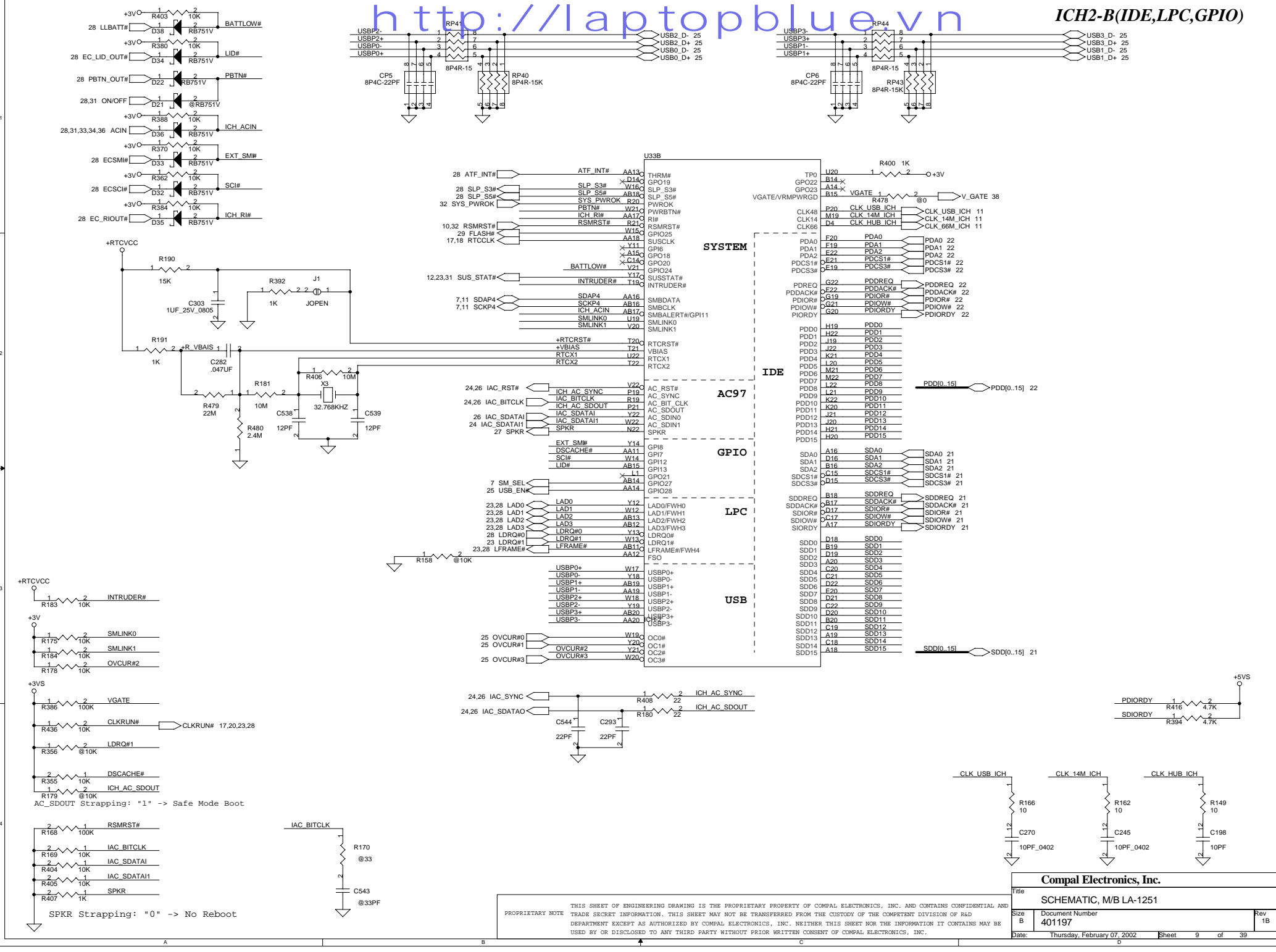
BANK 4/5



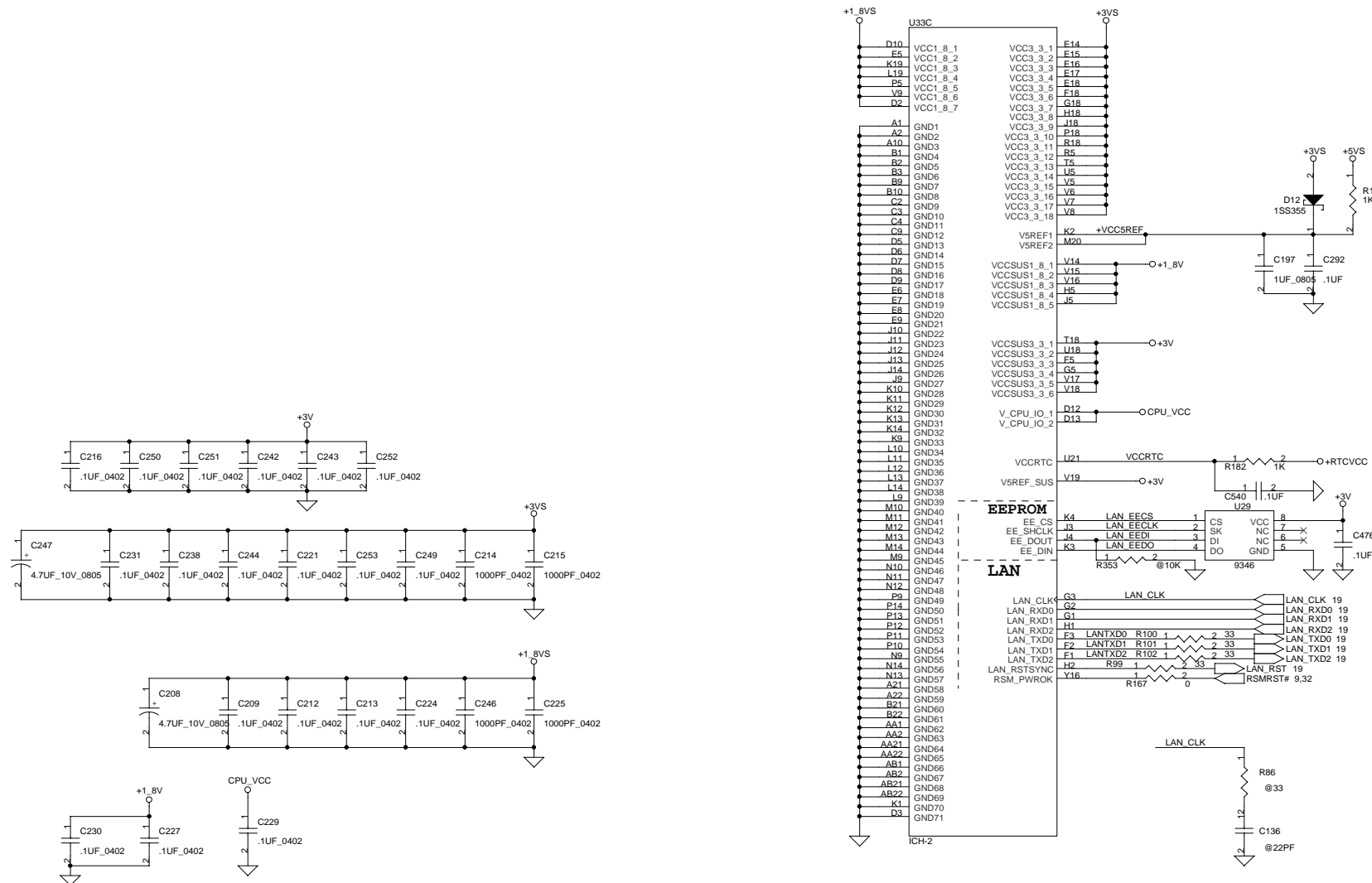
U33A



THIS SHEET OF ENGINEERING DRAWING IS THE PROPRIETARY PROPERTY OF COMPAL ELECTRONICS, INC. AND CONTAINS CONFIDENTIAL AND TRADE SECRET INFORMATION. THIS SHEET MAY NOT BE TRANSFERRED FROM THE CUSTODY OF THE COMPETENT DIVISION OF R&D DEPARTMENT EXCEPT AS AUTHORIZED BY COMPAL ELECTRONICS, INC. NEITHER THIS SHEET NOR THE INFORMATION IT CONTAINS MAY BE USED BY OR DISCLOSED TO ANY THIRD PARTY WITHOUT PRIOR WRITTEN CONSENT OF COMPAL ELECTRONICS, INC.

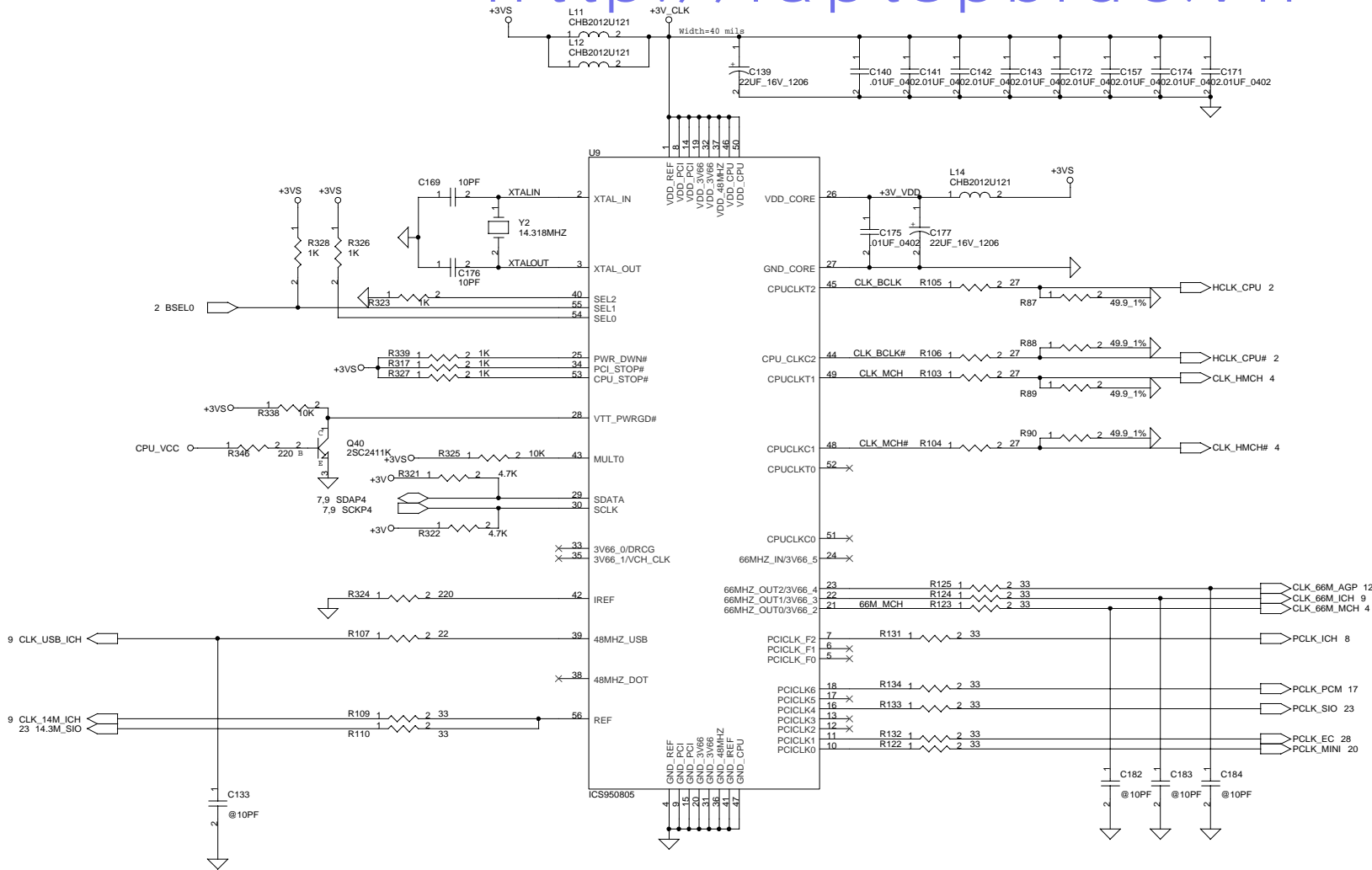


THIS SHEET OF ENGINEERING DRAWING IS THE PROPRIETARY PROPERTY OF COMPAL ELECTRONICS, INC. AND CONTAINS CONFIDENTIAL AND TRADE SECRET INFORMATION. THIS SHEET MAY NOT BE TRANSFERRED FROM THE CUSTODY OF THE COMPETENT DIVISION OF R&D DEPARTMENT EXCEPT AS AUTHORIZED BY COMPAL ELECTRONICS, INC. NEITHER THIS SHEET NOR THE INFORMATION IT CONTAINS MAY BE USED BY OR DISCLOSED TO ANY THIRD PARTY WITHOUT PRIOR WRITTEN CONSENT OF COMPAL ELECTRONICS, INC.



THIS SHEET OF ENGINEERING DRAWING IS THE PROPRIETARY PROPERTY OF COMPAL ELECTRONICS, INC. AND CONTAINS CONFIDENTIAL AND PROPRIETARY NOTE TRADE SECRET INFORMATION. THIS SHEET MAY NOT BE TRANSFERRED FROM THE CUSTODY OF THE COMPETENT DIVISION OF R&D DEPARTMENT EXCEPT AS AUTHORIZED BY COMPAL ELECTRONICS, INC. NEITHER THIS SHEET NOR THE INFORMATION IT CONTAINS MAY BE USED BY OR DISCLOSED TO ANY THIRD PARTY WITHOUT PRIOR WRITTEN CONSENT OF COMPAL ELECTRONICS, INC.

Compal Electronics, Inc.		
Title	SCHEMATIC, M/B LA-1251	
Size	Document Number	Rev
B	401197	1B
Date:	Thursday, February 07, 2002	Sheet 10 of 39



SEL2	SEL1	SEL0	CPUCLKC[0..2]	CPUCLKC[0..2]
0	0	0	66.67	66.67
0	0	1	100.00	100.00
0	1	0	200.00	200.00
0	1	1	133.33	133.33

THIS SHEET OF ENGINEERING DRAWING IS THE PROPRIETARY PROPERTY OF COMPAL ELECTRONICS, INC. AND CONTAINS CONFIDENTIAL AND PROPRIETARY NOTE TRADE SECRET INFORMATION. THIS SHEET MAY NOT BE TRANSFERRED FROM THE CUSTODY OF THE COMPETENT DIVISION OF R&D DEPARTMENT EXCEPT AS AUTHORIZED BY COMPAL ELECTRONICS, INC. NEITHER THIS SHEET NOR THE INFORMATION IT CONTAINS MAY BE USED BY OR DISCLOSED TO ANY THIRD PARTY WITHOUT PRIOR WRITTEN CONSENT OF COMPAL ELECTRONICS, INC.

Compal Electronics, Inc.			
Title	SCHEMATIC, M/B LA-1251		
Size	Document Number	Rev	
B	401197	1B	
Date:	Thursday, February 07, 2002	Sheet	11 of 39

HOST INTERFACE

Option Snap Pins

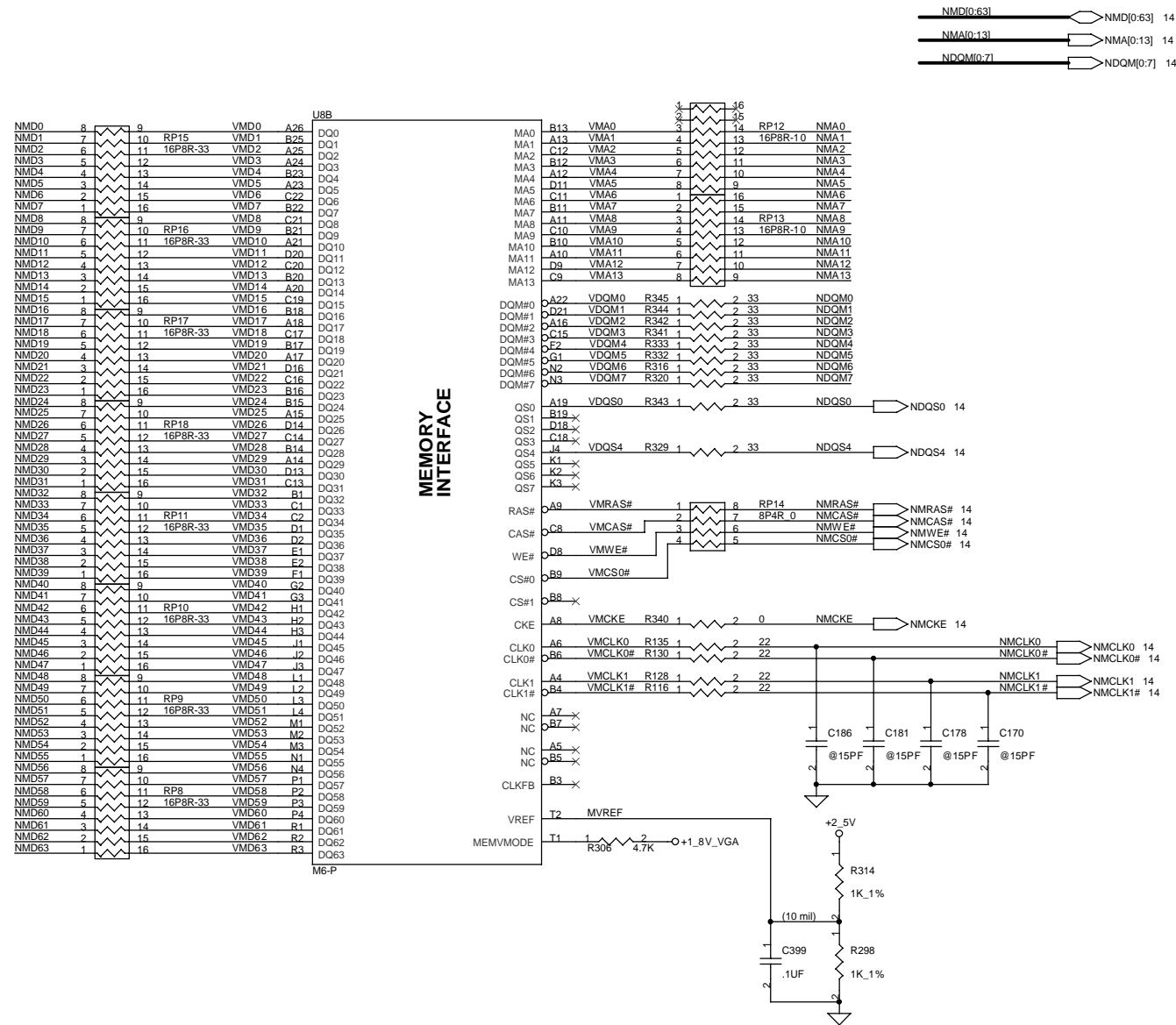
2	GPIO0	R71 1	2 @10K	Strap-G
1	GPIO1	R70 1	2 @10K	Strap-H
1	GPIO2	R7A 1	2 @10K	Strap-J
1	GPIO3	R7S 1	2 @10K	Strap-K

THIS SHEET OF ENGINEERING DRAWING IS THE PROPRIETARY PROPERTY OF COMPAL ELECTRONICS, INC. AND CONTAINS CONFIDENTIAL AND TRADE SECRET INFORMATION. THIS SHEET MAY NOT BE TRANSMITTED FROM THE CUSTODY OF THE COMPETENT DIVISION OF R&D DEPARTMENT EXCEPT AS AUTHORIZED BY COMPAL ELECTRONICS, INC. NEITHER THIS SHEET NOR THE INFORMATION CONTAINS MAY BE USED BY OR DISCLOSED TO ANY THIRD PARTY WITHOUT PRIOR WRITTEN CONSENT OF COMPAL ELECTRONICS, INC.

GPIO / ROM

ZV_L0DDATA10	AE1A	GPIO13
ZV_L0DDATA11	AE1B	GPIO14
ZV_L0DDATA12	AE1C	GPIO15
ZV_L0DDATA13	AE1D	GPIO16
ZV_L0DDATA14	AE1E	GPIO17
ZV_L0DDATA15	AE1F	GPIO18
ZV_L0DDATA16	AE1G	GPIO19
ZV_L0DDATA17	AE1H	GPIO20
ZV_L0DDATA18	AE1I	GPIO21
ZV_L0DDATA19	AE1J	GPIO22
ZV_L0DDATA20	AE1K	GPIO23
ZV_L0DDATA21	AE1L	GPIO24
ZV_L0DDATA22	AE1M	GPIO25
ZV_L0DDATA23	AE1N	GPIO26
ZV_L0DDATA24	AE1O	GPIO27
ZV_L0DDATA25	AE1P	GPIO28
ZV_L0DDATA26	AE1Q	GPIO29
ZV_L0DDATA27	AE1R	GPIO30
ZV_L0DDATA28	AE1S	GPIO31
ZV_L0DDATA29	AE1T	GPIO32
ZV_L0DDATA30	AE1U	GPIO33
ZV_L0DDATA31	AE1V	GPIO34
ZV_L0DDATA32	AE1W	GPIO35
ZV_L0DDATA33	AE1X	GPIO36
ZV_L0DDATA34	AE1Y	GPIO37
ZV_L0DDATA35	AE1Z	GPIO38
ZV_L0DDATA36	AE2A	GPIO39
ZV_L0DDATA37	AE2B	GPIO40
ZV_L0DDATA38	AE2C	GPIO41
ZV_L0DDATA39	AE2D	GPIO42
ZV_L0DDATA40	AE2E	GPIO43
ZV_L0DDATA41	AE2F	GPIO44
ZV_L0DDATA42	AE2G	GPIO45
ZV_L0DDATA43	AE2H	GPIO46
ZV_L0DDATA44	AE2I	GPIO47
ZV_L0DDATA45	AE2J	GPIO48
ZV_L0DDATA46	AE2K	GPIO49
ZV_L0DDATA47	AE2L	GPIO50
ZV_L0DDATA48	AE2M	GPIO51
ZV_L0DDATA49	AE2N	GPIO52
ZV_L0DDATA50	AE2O	GPIO53
ZV_L0DDATA51	AE2P	GPIO54
ZV_L0DDATA52	AE2Q	GPIO55
ZV_L0DDATA53	AE2R	GPIO56
ZV_L0DDATA54	AE2S	GPIO57
ZV_L0DDATA55	AE2T	GPIO58
ZV_L0DDATA56	AE2U	GPIO59
ZV_L0DDATA57	AE2V	GPIO60
ZV_L0DDATA58	AE2W	GPIO61
ZV_L0DDATA59	AE2X	GPIO62
ZV_L0DDATA60	AE2Y	GPIO63
ZV_L0DDATA61	AE2Z	GPIO64
ZV_L0DDATA62	AE3A	GPIO65
ZV_L0DDATA63	AE3B	GPIO66
ZV_L0DDATA64	AE3C	GPIO67
ZV_L0DDATA65	AE3D	GPIO68
ZV_L0DDATA66	AE3E	GPIO69
ZV_L0DDATA67	AE3F	GPIO70
ZV_L0DDATA68	AE3G	GPIO71
ZV_L0DDATA69	AE3H	GPIO72
ZV_L0DDATA70	AE3I	GPIO73
ZV_L0DDATA71	AE3J	GPIO74
ZV_L0DDATA72	AE3K	GPIO75
ZV_L0DDATA73	AE3L	GPIO76
ZV_L0DDATA74	AE3M	GPIO77
ZV_L0DDATA75	AE3N	GPIO78
ZV_L0DDATA76	AE3O	GPIO79
ZV_L0DDATA77	AE3P	GPIO80
ZV_L0DDATA78	AE3Q	GPIO81
ZV_L0DDATA79	AE3R	GPIO82
ZV_L0DDATA80	AE3S	GPIO83
ZV_L0DDATA81	AE3T	GPIO84
ZV_L0DDATA82	AE3U	GPIO85
ZV_L0DDATA83	AE3V	GPIO86
ZV_L0DDATA84	AE3W	GPIO87
ZV_L0DDATA85	AE3X	GPIO88
ZV_L0DDATA86	AE3Y	GPIO89
ZV_L0DDATA87	AE3Z	GPIO90
ZV_L0DDATA88	AE4A	GPIO91
ZV_L0DDATA89	AE4B	GPIO92
ZV_L0DDATA90	AE4C	GPIO93
ZV_L0DDATA91	AE4D	GPIO94
ZV_L0DDATA92	AE4E	GPIO95
ZV_L0DDATA93	AE4F	GPIO96
ZV_L0DDATA94	AE4G	GPIO97
ZV_L0DDATA95	AE4H	GPIO98
ZV_L0DDATA96	AE4I	GPIO99
ZV_L0DDATA97	AE4J	GPIO100
ZV_L0DDATA98	AE4K	GPIO101
ZV_L0DDATA99	AE4L	GPIO102
ZV_L0DDATA100	AE4M	GPIO103
ZV_L0DDATA101	AE4N	GPIO104
ZV_L0DDATA102	AE4O	GPIO105
ZV_L0DDATA103	AE4P	GPIO106
ZV_L0DDATA104	AE4Q	GPIO107
ZV_L0DDATA105	AE4R	GPIO108
ZV_L0DDATA106	AE4S	GPIO109
ZV_L0DDATA107	AE4T	GPIO110
ZV_L0DDATA108	AE4U	GPIO111
ZV_L0DDATA109	AE4V	GPIO112
ZV_L0DDATA110	AE4W	GPIO113
ZV_L0DDATA111	AE4X	GPIO114
ZV_L0DDATA112	AE4Y	GPIO115
ZV_L0DDATA113	AE4Z	GPIO116
ZV_L0DDATA114	AE5A	GPIO117
ZV_L0DDATA115	AE5B	GPIO118
ZV_L0DDATA116	AE5C	GPIO119
ZV_L0DDATA117	AE5D	GPIO120
ZV_L0DDATA118	AE5E	GPIO121
ZV_L0DDATA119	AE5F	GPIO122
ZV_L0DDATA120	AE5G	GPIO123
ZV_L0DDATA121	AE5H	GPIO124
ZV_L0DDATA122	AE5I	GPIO125
ZV_L0DDATA123	AE5J	GPIO126
ZV_L0DDATA124	AE5K	GPIO127
ZV_L0DDATA125	AE5L	GPIO128
ZV_L0DDATA126	AE5M	GPIO129
ZV_L0DDATA127	AE5N	GPIO130
ZV_L0DDATA128	AE5O	GPIO131
ZV_L0DDATA129	AE5P	GPIO132
ZV_L0DDATA130	AE5Q	GPIO133
ZV_L0DDATA131	AE5R	GPIO134
ZV_L0DDATA132	AE5S	GPIO135
ZV_L0DDATA133	AE5T	GPIO136
ZV_L0DDATA134	AE5U	GPIO137
ZV_L0DDATA135	AE5V	GPIO138
ZV_L0DDATA136	AE5W	GPIO139
ZV_L0DDATA137	AE5X	GPIO140
ZV_L0DDATA138	AE5Y	GPIO141
ZV_L0DDATA139	AE5Z	GPIO142
ZV_L0DDATA140	AE6A	GPIO143
ZV_L0DDATA141	AE6B	GPIO144
ZV_L0DDATA142	AE6C	GPIO145
ZV_L0DDATA143	AE6D	GPIO146
ZV_L0DDATA144	AE6E	GPIO147
ZV_L0DDATA145	AE6F	GPIO148
ZV_L0DDATA146	AE6G	GPIO149
ZV_L0DDATA147	AE6H	GPIO150
ZV_L0DDATA148	AE6I	GPIO151
ZV_L0DDATA149	AE6J	GPIO152
ZV_L0DDATA150	AE6K	GPIO153
ZV_L0DDATA151	AE6L	GPIO154
ZV_L0DDATA152	AE6M	GPIO155
ZV_L0DDATA153	AE6N	GPIO156
ZV_L0DDATA154	AE6O	GPIO157
ZV_L0DDATA155	AE6P	GPIO158
ZV_L0DDATA156	AE6Q	GPIO159
ZV_L0DDATA157	AE6R	GPIO160
ZV_L0DDATA158	AE6S	GPIO161
ZV_L0DDATA159	AE6T	GPIO162
ZV_L0DDATA160	AE6U	GPIO163
ZV_L0DDATA161	AE6V	GPIO164
ZV_L0DDATA162	AE6W	GPIO165
ZV_L0DDATA163	AE6X	GPIO166
ZV_L0DDATA164	AE6Y	GPIO167
ZV_L0DDATA165	AE6Z	GPIO168
ZV_L0DDATA166	AE7A	GPIO169
ZV_L0DDATA167	AE7B	GPIO170
ZV_L0DDATA168	AE7C	GPIO171
ZV_L0DDATA169	AE7D	GPIO172
ZV_L0DDATA170	AE7E	GPIO173
ZV_L0DDATA171	AE7F	GPIO174
ZV_L0DDATA172	AE7G	GPIO175
ZV_L0DDATA173	AE7H	GPIO176
ZV_L0DDATA174	AE7I	GPIO177
ZV_L0DDATA175	AE7J	GPIO178
ZV_L0DDATA176	AE7K	GPIO179
ZV_L0DDATA177	AE7L	GPIO180
ZV_L0DDATA178	AE7M	GPIO181
ZV_L0DDATA179	AE7N	GPIO182
ZV_L0DDATA180	AE7O	GPIO183
ZV_L0DDATA181	AE7P	GPIO184
ZV_L0DDATA182	AE7Q	GPIO185
ZV_L0DDATA183	AE7R	GPIO186
ZV_L0DDATA184	AE7S	GPIO187
ZV_L0DDATA185	AE7T	GPIO188
ZV_L0DDATA186	AE7U	GPIO189
ZV_L0DDATA187	AE7V	GPIO190
ZV_L0DDATA188	AE7W	GPIO191
ZV_L0DDATA189	AE7X	GPIO192
ZV_L0DDATA190	AE7Y	GPIO193
ZV_L0DDATA191	AE7Z	GPIO194
ZV_L0DDATA192	AE8A	GPIO195
ZV_L0DDATA193	AE8B	GPIO196
ZV_L0DDATA194	AE8C	GPIO197
ZV_L0DDATA195	AE8D	GPIO198
ZV_L0DDATA196	AE8E	GPIO199
ZV_L0DDATA197	AE8F	GPIO200
ZV_L0DDATA198	AE8G	GPIO201
ZV_L0DDATA199	AE8H	GPIO202
ZV_L0DDATA200	AE8I	GPIO203
ZV_L0DDATA201	AE8J	GPIO204
ZV_L0DDATA202	AE8K	GPIO205
ZV_L0DDATA203	AE8L	GPIO206
ZV_L0DDATA204	AE8M	GPIO207
ZV_L0DDATA205	AE8N	GPIO208
ZV_L0DDATA206	AE8O	GPIO209
ZV_L0DDATA207	AE8P	GPIO210
ZV_L0DDATA208	AE8Q	GPIO211
ZV_L0DDATA209	AE8R	GPIO212
ZV_L0DDATA210	AE8S	GPIO213
ZV_L0DDATA211	AE8T	GPIO214
ZV_L0DDATA212	AE8U	GPIO215
ZV_L0DDATA213	AE8V	GPIO216
ZV_L0DDATA214	AE8W	GPIO217
ZV_L0DDATA215	AE8X	GPIO218
ZV_L0DDATA216	AE8Y	GPIO219
ZV_L0DDATA217	AE8Z	GPIO220
ZV_L0DDATA218	AE9A	GPIO221
ZV_L0DDATA219	AE9B	GPIO222
ZV_L0DDATA220	AE9C	GPIO223
ZV_L0DDATA221	AE9D	GPIO224
ZV_L0DDATA222	AE9E	GPIO225
ZV_L0DDATA223	AE9F	GPIO226
ZV_L0DDATA224	AE9G	GPIO227
ZV_L0DDATA225	AE9H	GPIO228
ZV_L0DDATA226	AE9I	GPIO229
ZV_L0DDATA227	AE9J	GPIO230
ZV_L0DDATA228	AE9K	GPIO231
ZV_L0DDATA229	AE9L	GPIO232
ZV_L0DDATA230	AE9M	GPIO233
ZV_L0DDATA231	AE9N	GPIO234
ZV_L0DDATA232	AE9O	GPIO235
ZV_L0DDATA233	AE9P	GPIO236
ZV_L0DDATA234	AE9Q	GPIO237
ZV_L0DDATA235	AE9R	GPIO238
ZV_L0DDATA236	AE9S	GPIO239
ZV_L0DDATA237	AE9T	GPIO240
ZV_L0DDATA238	AE9U	GPIO241
ZV_L0DDATA239	AE9V	GPIO242
ZV_L0DDATA240	AE9W	GPIO243
ZV_L0DDATA241	AE9X	GPIO244
ZV_L0DDATA242	AE9Y	GPIO245
ZV_L0DDATA243	AE9Z	GPIO246
ZV_L0DDATA244	AE10A	GPIO247
ZV_L0DDATA245	AE10B	GPIO248
ZV_L0DDATA246	AE10C	GPIO249
ZV_L0DDATA247	AE10D	GPIO250
ZV_L0DDATA248	AE10E	GPIO251
ZV_L0DDATA249	AE10F	GPIO252
ZV_L0DDATA250	AE10G	GPIO253
ZV_L0DDATA251	AE10H	GPIO254
ZV_L0DDATA252	AE10I	GPIO255
ZV_L0DDATA253	AE10J	GPIO256
ZV_L0DDATA254	AE10K	GPIO257
ZV_L0DDATA255	AE10L	GPIO258
ZV_L0DDATA256	AE10M	GPIO259
ZV_L0DDATA257	AE10N	GPIO260
ZV_L0DDATA258	AE10O	GPIO261
ZV_L0DDATA259	AE10P	GPIO262
ZV_L0DDATA260	AE10Q	GPIO263
ZV_L0DDATA261	AE10R	GPIO264
ZV_L0DDATA262	AE10S	GPIO265
ZV_L0DDATA263	AE10T	GPIO266
ZV_L0DDATA264	AE10U	GPIO267
ZV_L0DDATA265	AE10V	GPIO268
ZV_L0DDATA266	AE10W	GPIO269
ZV_L0DDATA267	AE10X	GPIO270
ZV_L0DDATA268	AE10Y	GPIO271
ZV_L0DDATA269	AE10Z	GPIO272
ZV_L0DDATA270	AE11A	GPIO273
ZV_L0DDATA271	AE11B	GPIO274
ZV_L0DDATA272	AE11C	GPIO275
ZV_L0DDATA273	AE11D	GPIO276
ZV_L0DDATA274	AE11E	GPIO277
ZV_L0DDATA275	AE11F	GPIO278
ZV_L0DDATA276	AE11G	GPIO279
ZV_L0DDATA277	AE11H	GPIO280
ZV_L0DDATA278	AE11I	GPIO281
ZV_L0DDATA279	AE11J	GPIO282
ZV_L0DDATA280	AE11K	GPIO283
ZV_L0DDATA281	AE11L	GPIO284
ZV_L0DDATA282	AE11M	GPIO285
ZV_L0DDATA283	AE11N	GPIO286
ZV_L0DDATA284	AE11O	GPIO287
ZV_L0DDATA285	AE11P	GPIO288
ZV_L0DDATA286	AE11Q	GPIO289
ZV_L0DDATA287	AE11R	GPIO290
ZV_L0DDATA288	AE11S	GPIO291
ZV_L0DDATA289	AE11T	GPIO292
ZV_L0DDATA290	AE11U	GPIO293
ZV_L0DDATA291	AE11V	GPIO294
ZV_L0DDATA292	AE11W	GPIO295
ZV_L0DDATA293	AE11X	GPIO296
ZV_L0DDATA294	AE11Y	GPIO297
ZV_L0DDATA295	AE11Z	GPIO298
ZV_L0DDATA296	AE12A	GPIO299
ZV_L0DDATA297	AE12B	GPIO300
ZV_L0DDATA298	AE12C	GPIO301
ZV_L0DDATA299	AE12D	GPIO302
ZV_L0DDATA300	AE12E	GPIO303
ZV_L0DDATA301	AE12F	GPIO304
ZV_L0DDATA302	AE12G	GPIO305
ZV_L0DDATA303	AE12H	GPIO306
ZV_L0DDATA304	AE12I	GPIO307
ZV_L0DDATA305	AE12J	GPIO308
ZV_L0DDATA306	AE12K	GPIO309
ZV_L0DDATA307	AE12L	GPIO310
ZV_L0DDATA308	AE12M	GPIO311
ZV_L0DDATA309	AE12N	GPIO312
ZV_L0DDATA310	AE12O	GPIO313
ZV_L0DDATA311	AE12P	GPIO314
ZV_L0DDATA312	AE12Q	GPIO315
ZV_L0DDATA313	AE12R	GPIO316
ZV_L0DDATA314	AE12S	GPIO317
ZV_L0DDATA315	AE12T	GPIO318
ZV_L0DDATA316	AE12U	GPIO319
ZV_L0DDATA317	AE12V	GPIO320
ZV_L0DDATA318	AE12W	GPIO321
ZV_L0DDATA319	AE12X	GPIO322
ZV_L0DDATA320	AE12Y	GPIO323
ZV_L0DDATA321	AE12Z	GPIO324
ZV_L0DDATA322	AE13A	GPIO325
ZV_L0DDATA323	AE13B	GPIO326
ZV_L0DDATA324	AE13C	GPIO327
ZV_L0DDATA325	AE13D	GPIO328
ZV_L0DDATA326	AE13E	GPIO329
ZV_L0DDATA327	AE13F	GPIO330
ZV_L0DDATA328	AE13G	GPIO331
ZV_L0DDATA329	AE13H	GPIO332
ZV_L0DDATA330	AE13I	GPIO333
ZV_L0DDATA331	AE13J	GPIO334
ZV_L0DDATA332	AE13K	GPIO335
ZV_L0DDATA333	AE13L	GPIO336
ZV_L0DDATA334	AE13M	GPIO337
ZV_L0DDATA335	AE13N	GPIO338
ZV_L0DDATA336	AE13O	GPIO339
ZV_L0DDATA337	AE13P	GPIO340
ZV_L0DDATA338	AE13Q	GPIO341
ZV_L0DDATA339	AE13R	GPIO342
ZV_L0DDATA340	AE13S	GPIO343
ZV_L0DDATA341	AE13T	GPIO344
ZV_L0DDATA342	AE13U	GPIO345
ZV_L0DDATA343	AE13V	GPIO346
ZV_L0DDATA344	AE13W	GPIO347
ZV_L0DDATA345	AE13X	GPIO348
ZV_L0DDATA346	AE13Y	GPIO349
ZV_L0DDATA347	AE13Z	GPIO350
ZV_L0DDATA348	AE14A	GPIO351
ZV_L0DDATA349	AE14B	GPIO352
ZV_L0DDATA350	AE14C	GPIO353
ZV_L0DDATA351	AE14D	GPIO354
ZV_L0DDATA352	AE14E	GPIO355
ZV_L0DDATA353	AE14F	GPIO356
ZV_L0DDATA354	AE14G	GPIO357
ZV_L0DDATA355	AE14H	GPIO358
ZV_L0DDATA356	AE14I	GPIO359
ZV_L0DDATA357	AE14J	GPIO360
ZV_L0DDATA358	AE14K	GPIO361
ZV_L0DDATA359	AE14L	GPIO362
ZV_L0DDATA360	AE14M	GPIO363
ZV_L0DDATA361	AE14N	GPIO364

MEMORY INTERFACE



THIS SHEET OF ENGINEERING DRAWING IS THE PROPRIETARY PROPERTY OF COMPAL ELECTRONICS, INC. AND CONTAINS CONFIDENTIAL AND TRADE SECRET INFORMATION. THIS SHEET MAY NOT BE TRANSFERRED FROM THE CUSTODY OF THE COMPETENT DIVISION OF R&D DEPARTMENT EXCEPT AS AUTHORIZED BY COMPAL ELECTRONICS, INC. NEITHER THIS SHEET NOR THE INFORMATION CONTAINS MAY BE USED BY OR DISCLOSED TO ANY THIRD PARTY WITHOUT PRIOR WRITTEN CONSENT OF COMPAL ELECTRONICS, INC.

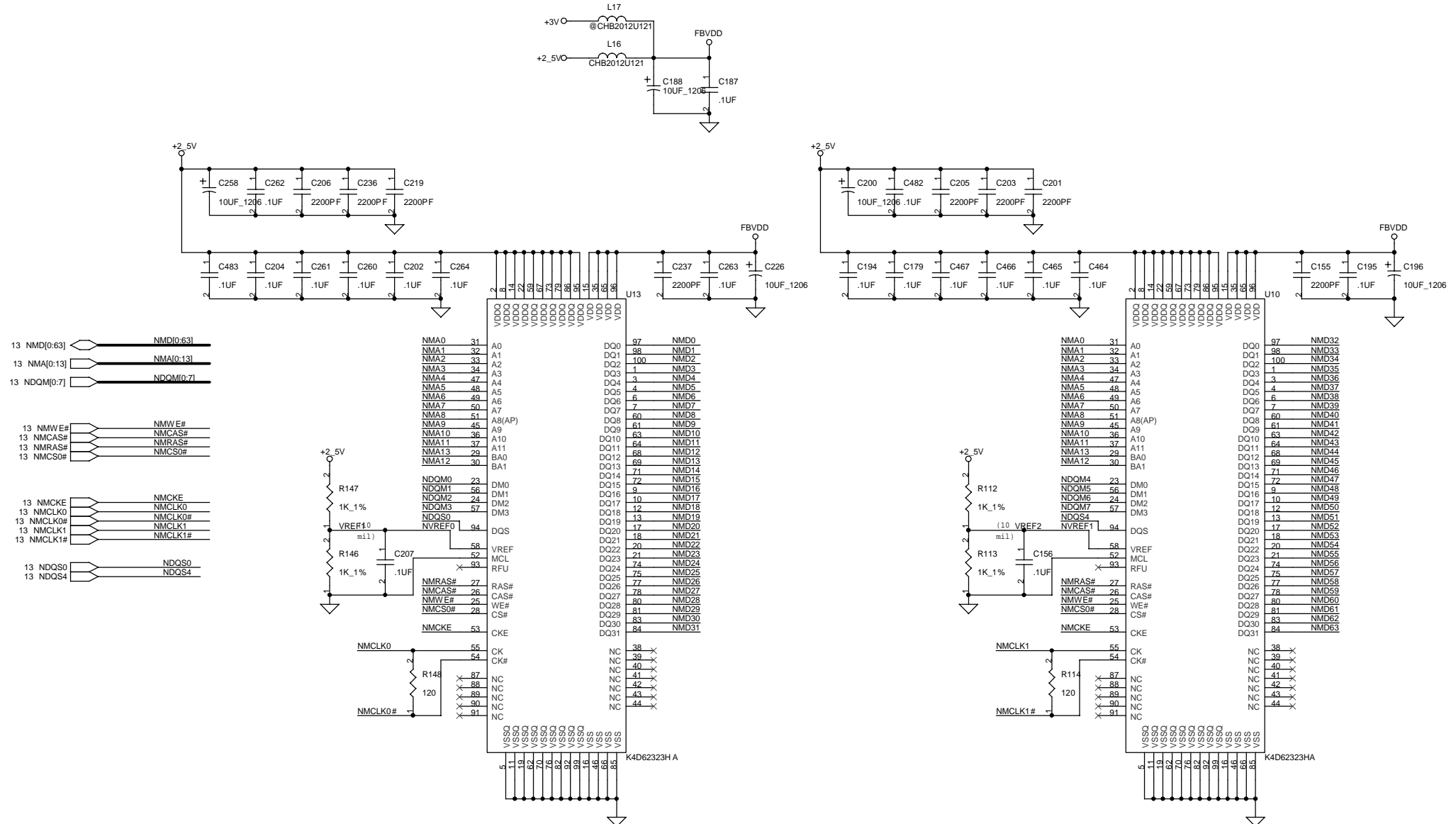
Compal Electronics, Inc.

SCHEMATIC, M/B LA-1251

Size	Document Number
Custom	401197

Rev
1B

Date: Thursday, February 07, 2002 Sheet 13 of 39

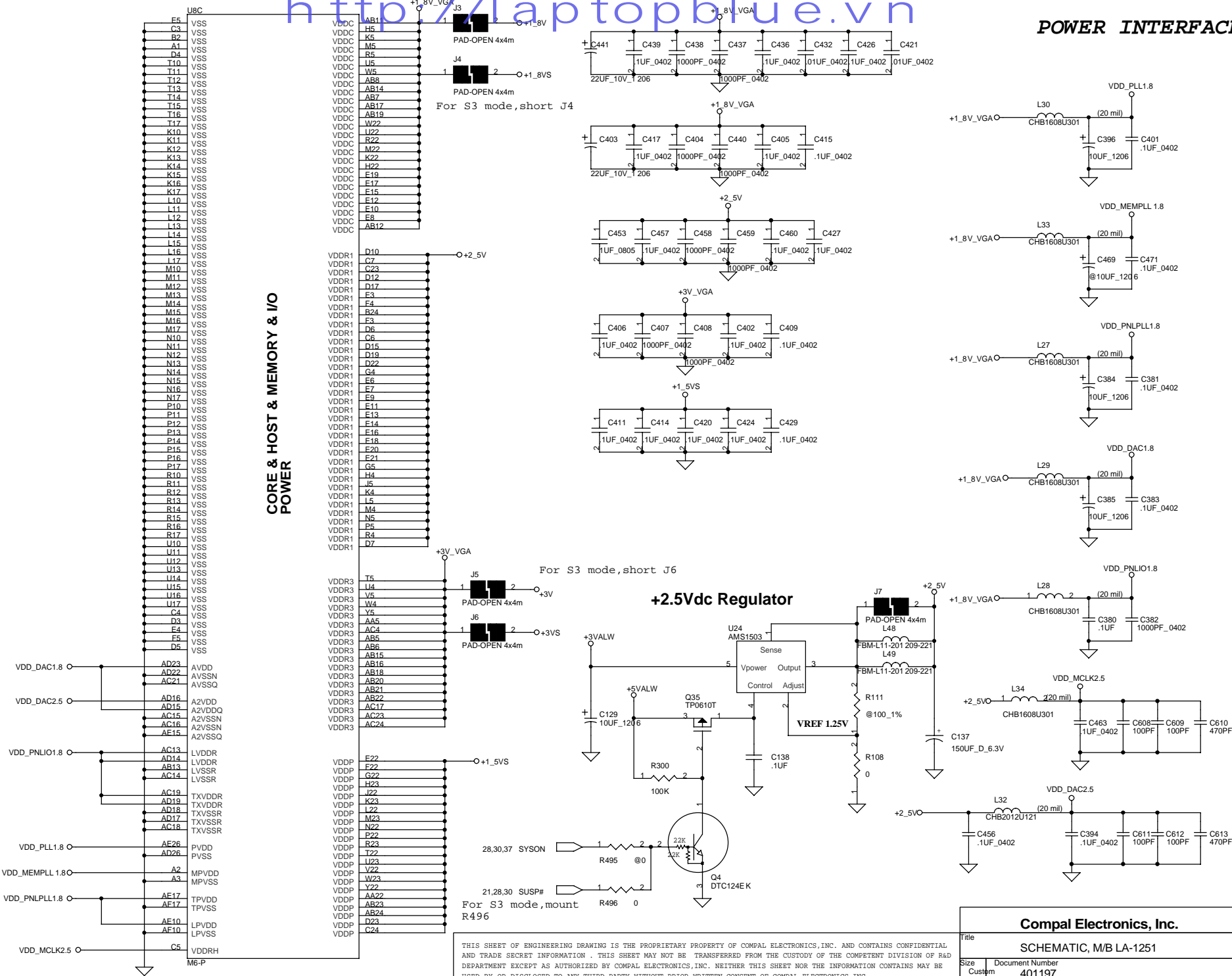


THIS SHEET OF ENGINEERING DRAWING IS THE PROPRIETARY PROPERTY OF COMPAL ELECTRONICS, INC. AND CONTAINS CONFIDENTIAL AND TRADE SECRET INFORMATION. THIS SHEET MAY NOT BE TRANSFERRED FROM THE CUSTODY OF THE COMPETENT DIVISION OF R&D DEPARTMENT EXCEPT AS AUTHORIZED BY COMPAL ELECTRONICS, INC. NEITHER THIS SHEET NOR THE INFORMATION CONTAINS MAY BE USED BY OR DISCLOSED TO ANY THIRD PARTY WITHOUT PRIOR WRITTEN CONSENT OF COMPAL ELECTRONICS, INC.

Compal Electronics, Inc.		
Title SCHEMATIC, M/B LA-1251		
Size Custom	Document Number 401197	Rev 1B
Date Thursday, February 07, 2002	Sheet 14	of 39

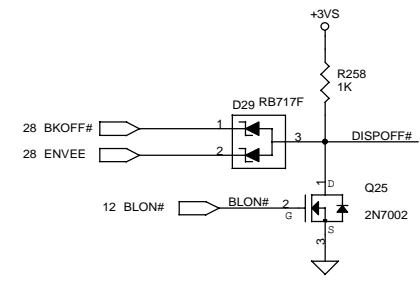
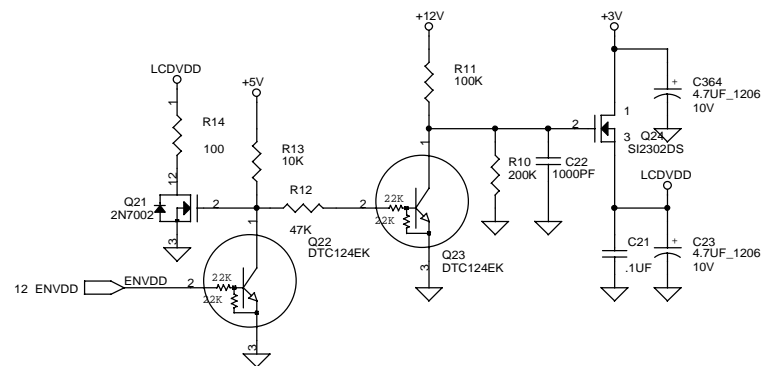
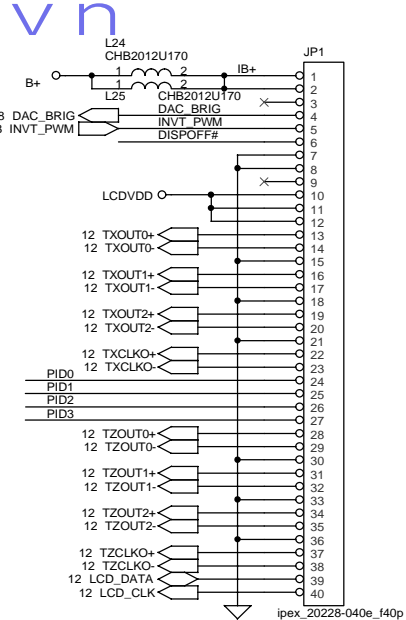
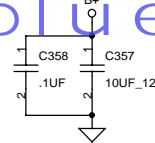
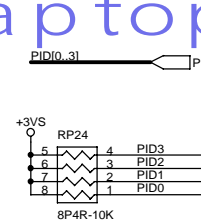
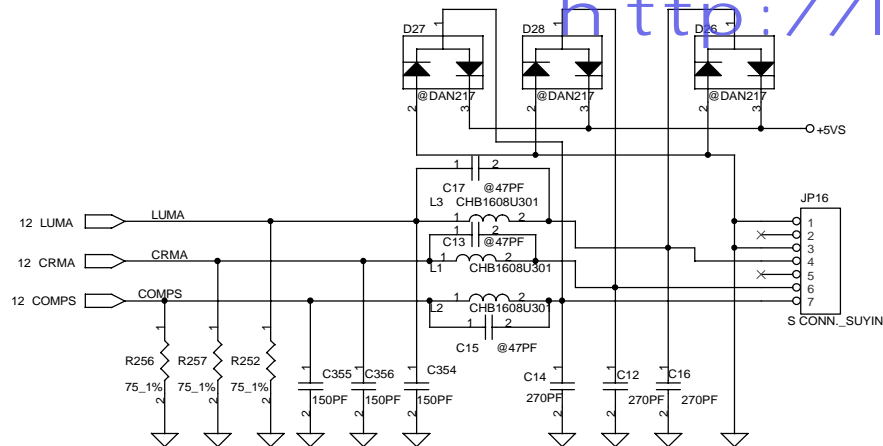
POWER INTERFACE

CORE & HOST & MEMORY & I/O POWER

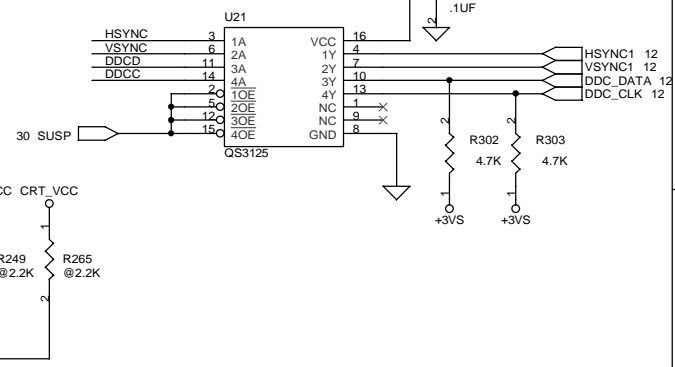
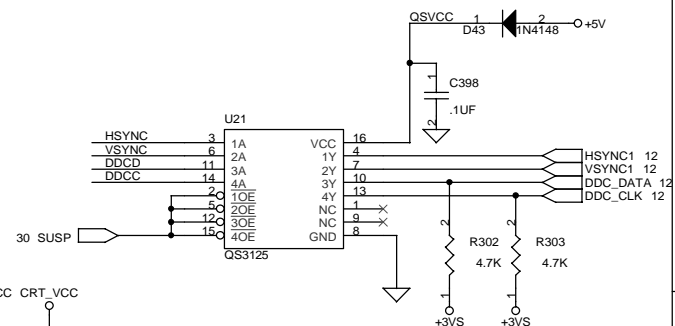
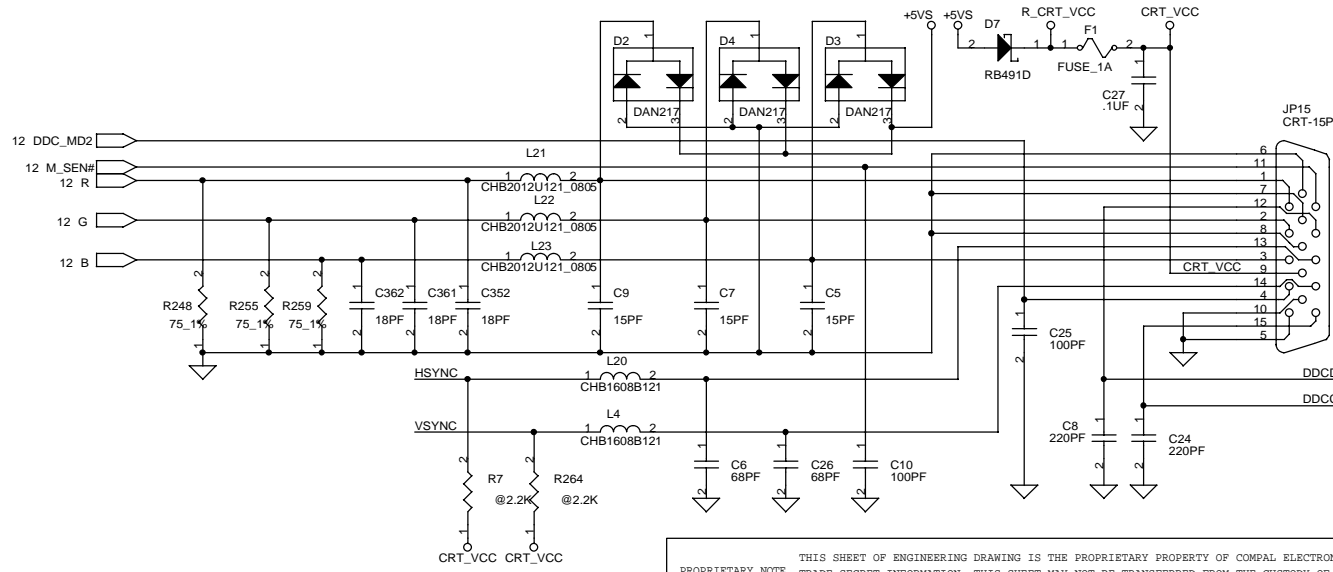


THIS SHEET OF ENGINEERING DRAWING IS THE PROPRIETARY PROPERTY OF COMPAL ELECTRONICS, INC. AND CONTAINS CONFIDENTIAL AND TRADE SECRET INFORMATION. THIS SHEET MAY NOT BE TRANSFERRED FROM THE CUSTODY OF THE COMPETENT DIVISION OF R&D DEPARTMENT EXCEPT AS AUTHORIZED BY COMPAL ELECTRONICS, INC. NEITHER THIS SHEET NOR THE INFORMATION CONTAINS MAY BE USED BY OR DISCLOSED TO ANY THIRD PARTY WITHOUT PRIOR WRITTEN CONSENT OF COMPAL ELECTRONICS, INC.

Compal Electronics, Inc.			
Title			
SCHEMATIC, M/B LA-1251			
Size	Document Number	Rev	
Custom	401197	1B	
Date:	Thursday, February 07, 2002	Sheet	15 of 39



CRT Connector

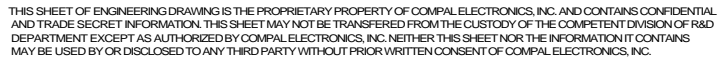


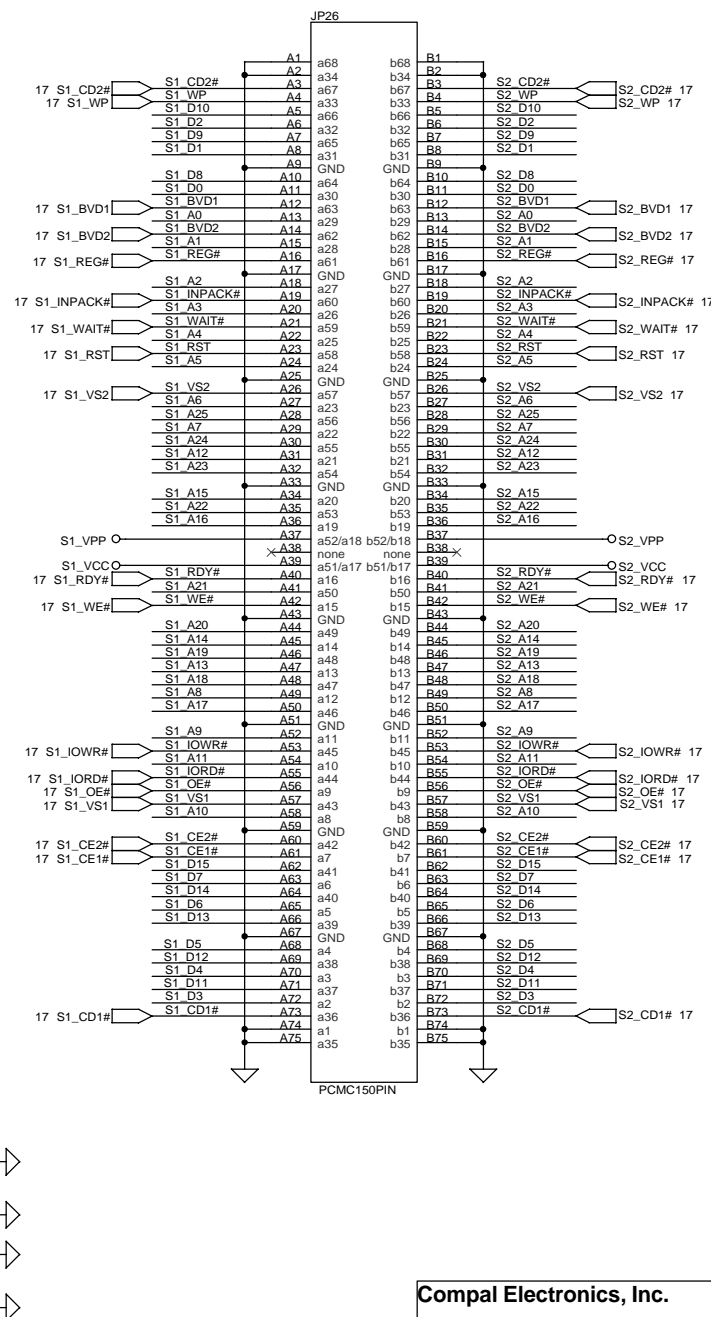
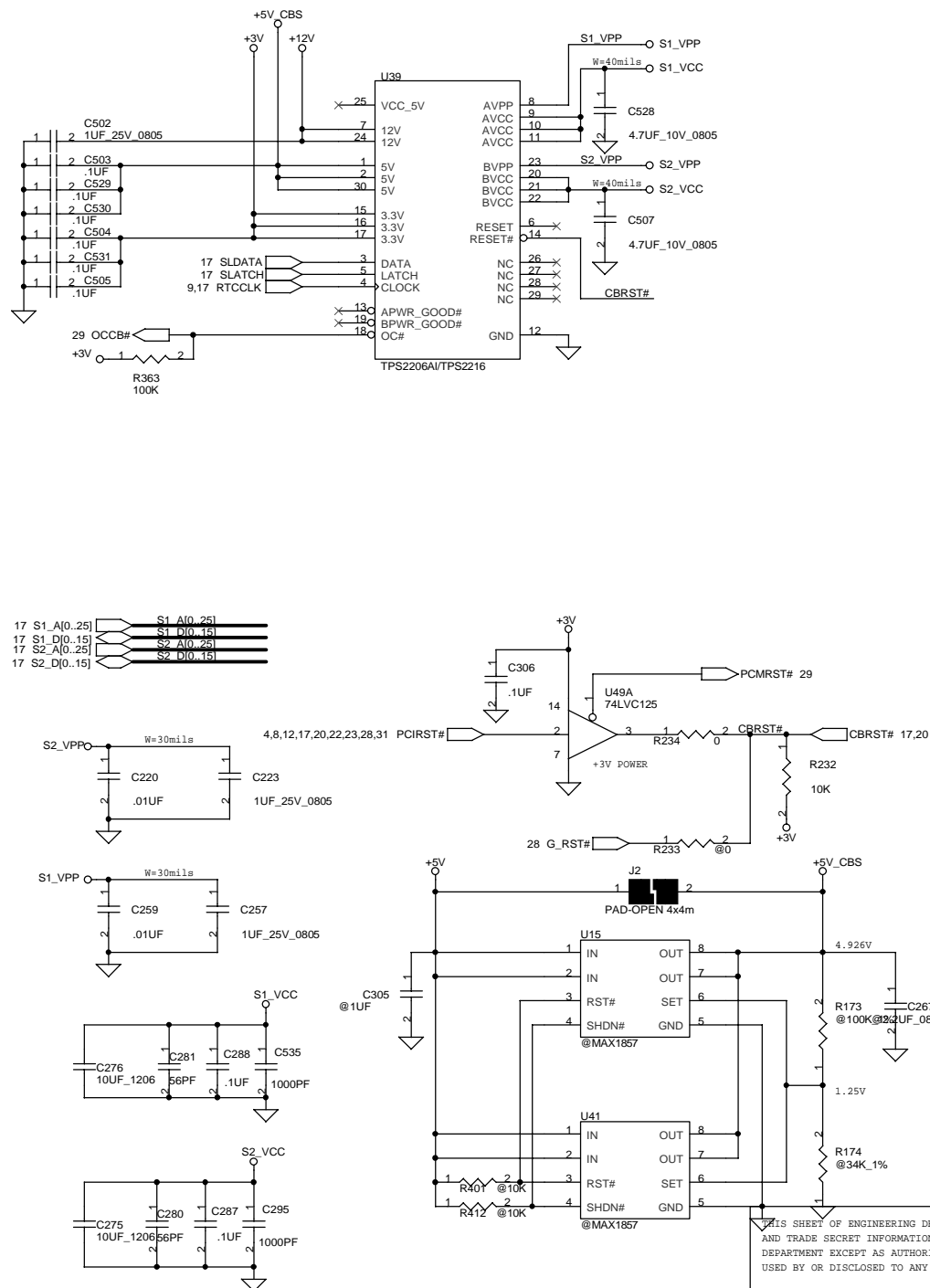
PROPRIETARY NOTE
THIS SHEET OF ENGINEERING DRAWING IS THE PROPRIETARY PROPERTY OF COMPAL ELECTRONICS, INC. AND CONTAINS CONFIDENTIAL AND TRADE SECRET INFORMATION. THIS SHEET MAY NOT BE TRANSFERRED FROM THE CUSTODY OF THE COMPETENT DIVISION OF R&D DEPARTMENT EXCEPT AS AUTHORIZED BY COMPAL ELECTRONICS, INC. NEITHER THIS SHEET NOR THE INFORMATION IT CONTAINS MAY BE USED BY OR DISCLOSED TO ANY THIRD PARTY WITHOUT PRIOR WRITTEN CONSENT OF COMPAL ELECTRONICS, INC.

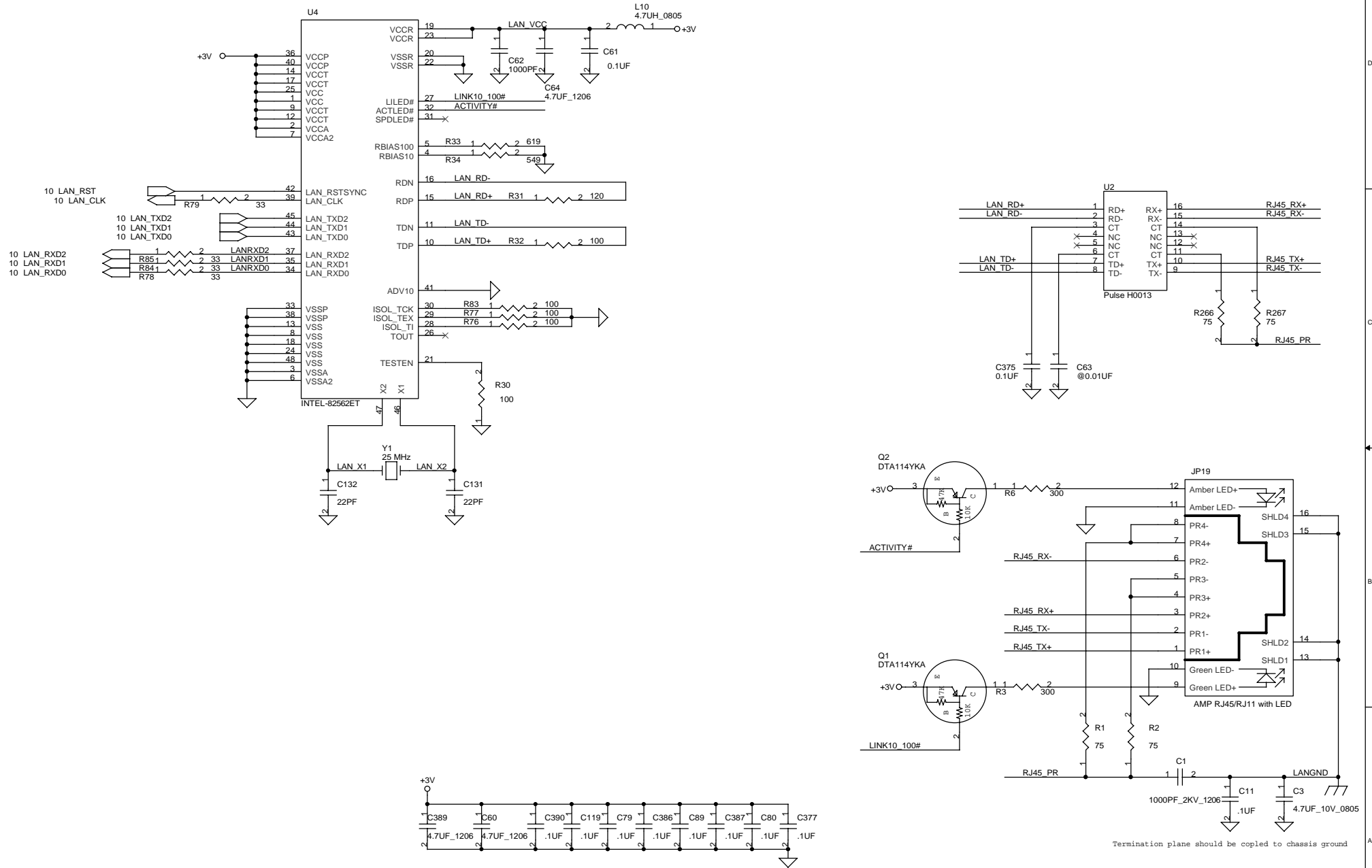
Compal Electronics, Inc.

SCHEMATIC, M/B LA-1251

Title	Size	Document Number	Rev
	B	401197	1B
Date:	Thursday, February 07, 2002	Sheet	16 of 39







Compal Electronics, Inc.

Title SCHEMATIC, M/B LA-1251

Size B Document Number 401197

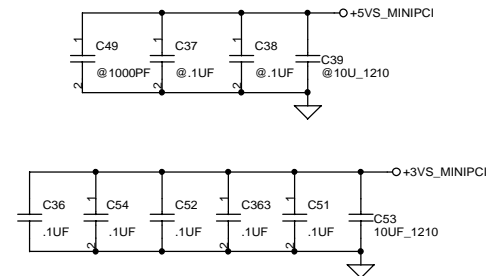
Date: Thursday, February 07, 2002

Sheet 19 of 39

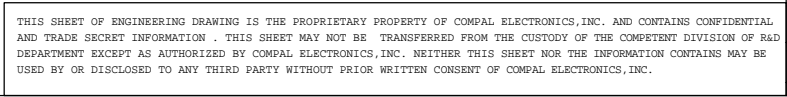
Rev 1B

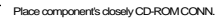
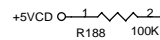
PROPRIETARY NOTE

THIS SHEET OF ENGINEERING DRAWING IS THE PROPRIETARY PROPERTY OF COMPAL ELECTRONICS, INC. AND CONTAINS CONFIDENTIAL AND TRADE SECRET INFORMATION. THIS SHEET MAY NOT BE TRANSFERRED FROM THE CUSTODY OF THE COMPETENT DIVISION OF R&D DEPARTMENT EXCEPT AS AUTHORIZED BY COMPAL ELECTRONICS, INC. NEITHER THIS SHEET NOR THE INFORMATION IT CONTAINS MAY BE USED BY OR DISCLOSED TO ANY THIRD PARTY WITHOUT PRIOR WRITTEN CONSENT OF COMPAL ELECTRONICS, INC.

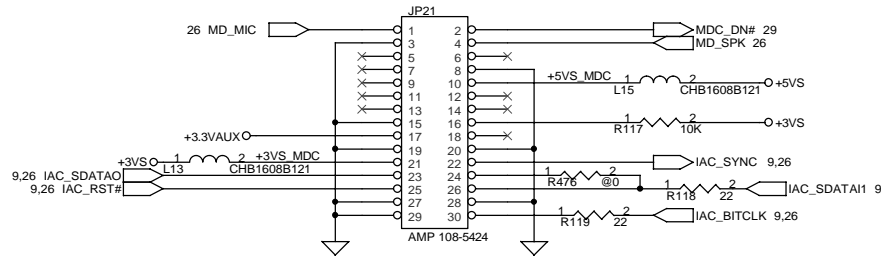


AL R&D E	Title			SCHEMATIC, M/B LA-1251		
	Size	Document Number				Rev
	B	401197				1B
	Date: Thursday, February 07, 2002		Sheet 20 of 39			

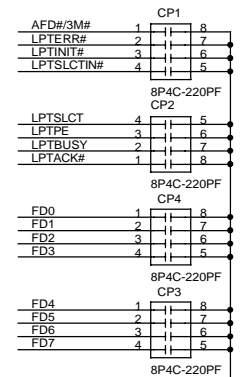
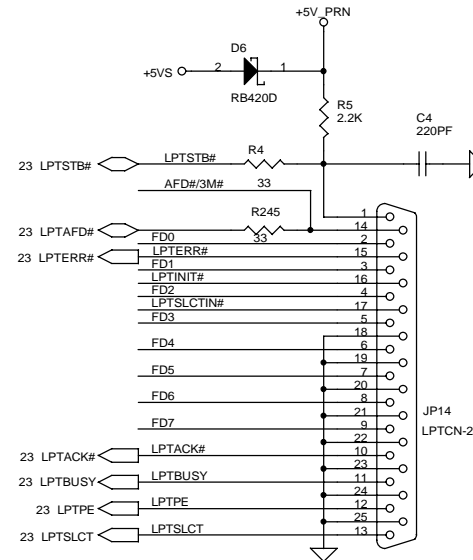
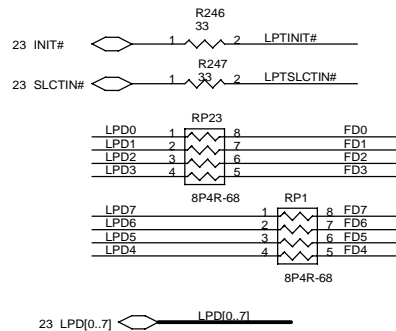
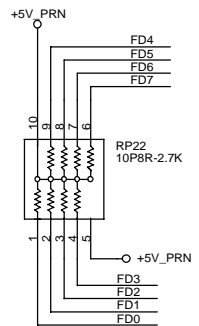
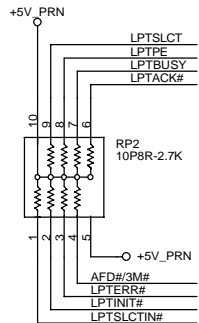




AL R&D E	Title			
	SCHEMATIC, M/B LA-1251			
	Size	Document Number		Rev
	B	401197		1B
	Date:	Thursday, February 07, 2002	Sheet	22 of 39



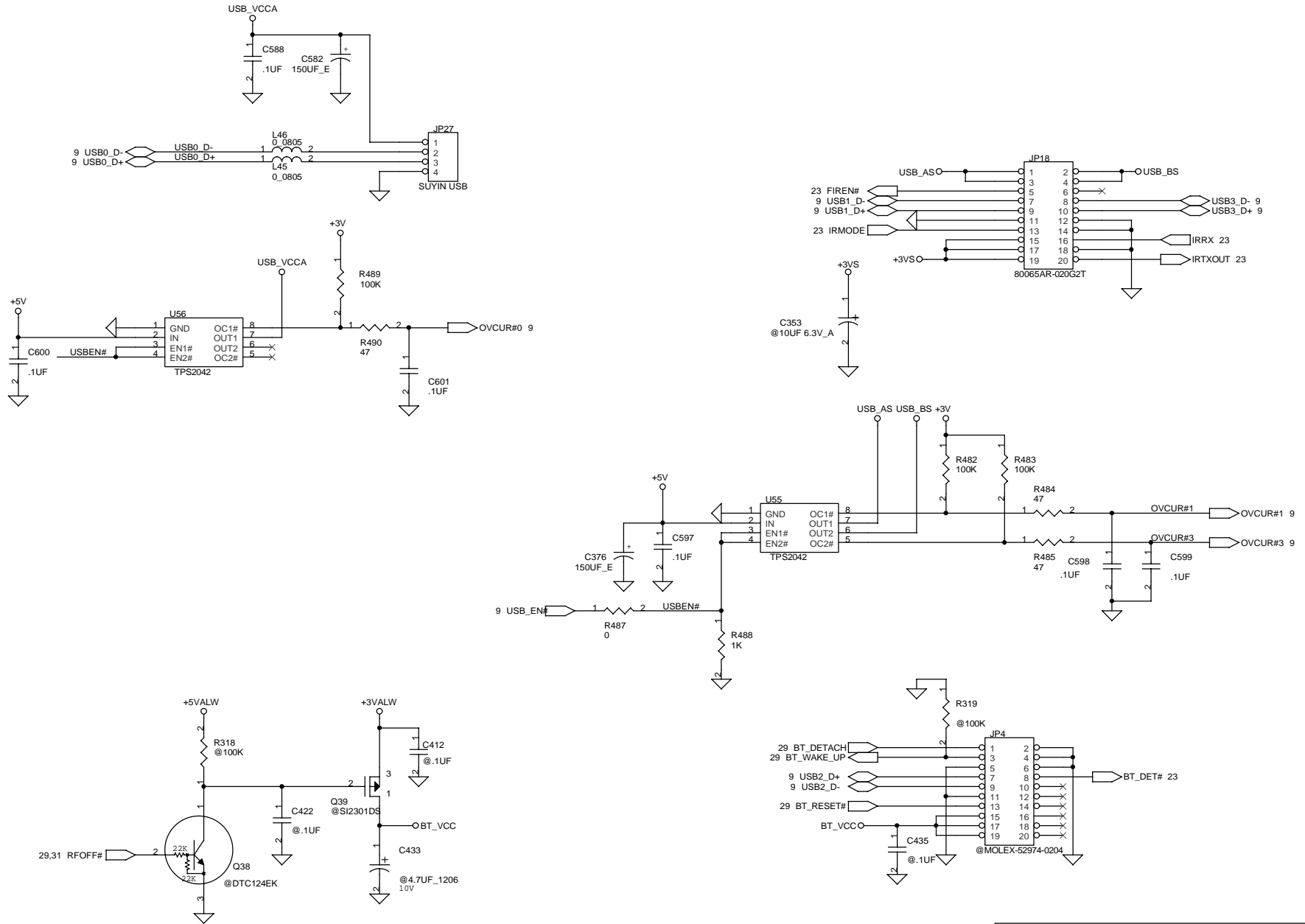
PARALLEL PORT



THIS SHEET OF ENGINEERING DRAWING IS THE PROPRIETARY PROPERTY OF COMPAL ELECTRONICS, INC. AND CONTAINS CONFIDENTIAL AND TRADE SECRET INFORMATION. THIS SHEET MAY NOT BE TRANSFERRED FROM THE CUSTODY OF THE COMPETENT DIVISION OF R&D DEPARTMENT EXCEPT AS AUTHORIZED BY COMPAL ELECTRONICS, INC. NEITHER THIS SHEET NOR THE INFORMATION CONTAINS MAY BE USED BY OR DISCLOSED TO ANY THIRD PARTY WITHOUT PRIOR WRITTEN CONSENT OF COMPAL ELECTRONICS, INC.

Compal Electronics, Inc.

Title		SCHEMATIC, M/B LA-1251
Size	Document Number	401197
Date:	Thursday, February 07, 2002	Sheet 24 of 39
		Rev 1B

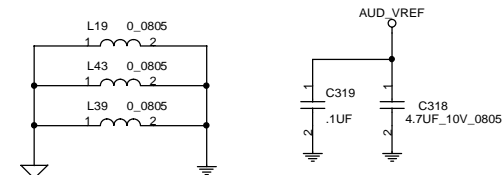
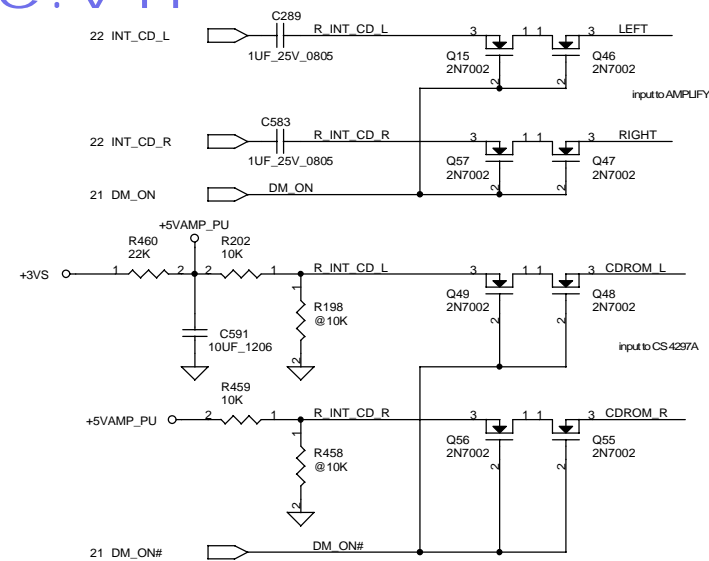


THIS SHEET OF ENGINEERING DRAWING IS THE PROPRIETARY PROPERTY OF COMPAL ELECTRONICS, INC. AND CONTAINS CONFIDENTIAL AND TRADE SECRET INFORMATION. THIS SHEET MAY NOT BE TRANSFERRED FROM THE CUSTODY OF THE COMPETENT DIVISION OF R&D DEPARTMENT EXCEPT AS AUTHORIZED BY COMPAL ELECTRONICS, INC. NEITHER THIS SHEET NOR THE INFORMATION CONTAINS MAY BE USED BY OR DISCLOSED TO ANY THIRD PARTY WITHOUT PRIOR WRITTEN CONSENT OF COMPAL ELECTRONICS, INC.

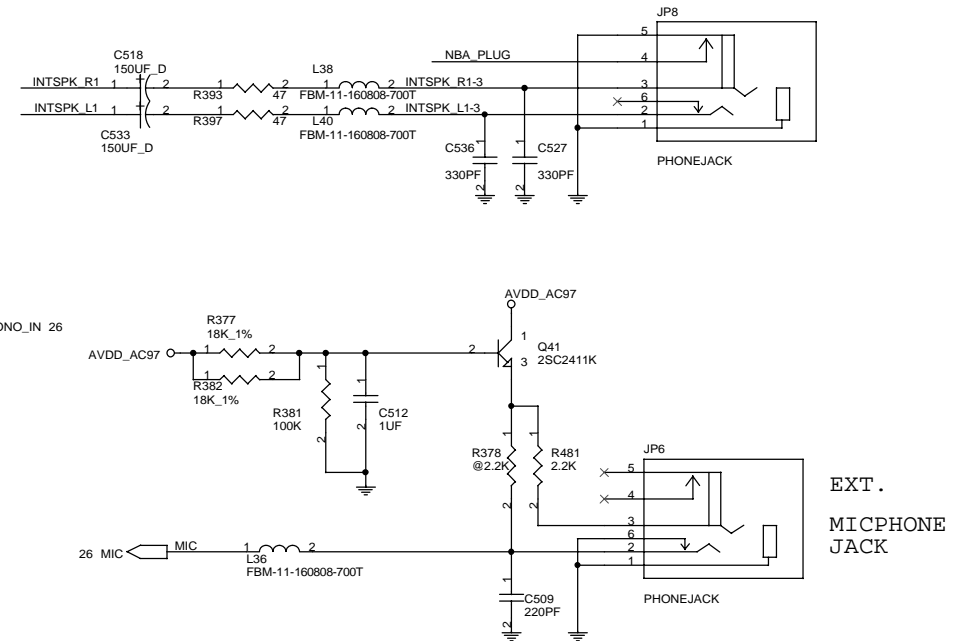
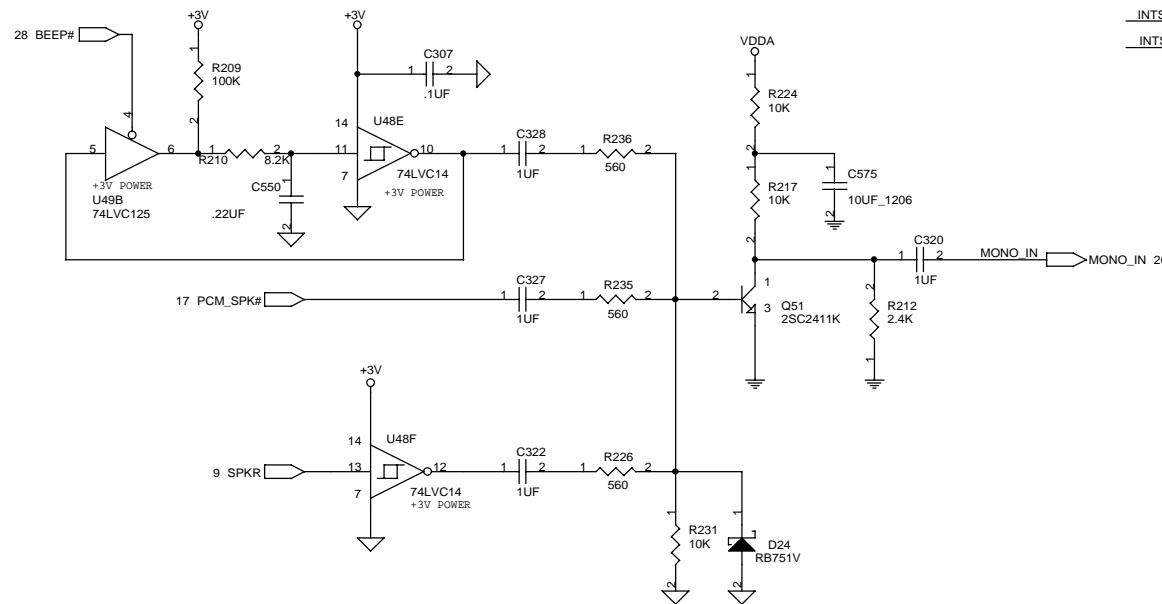
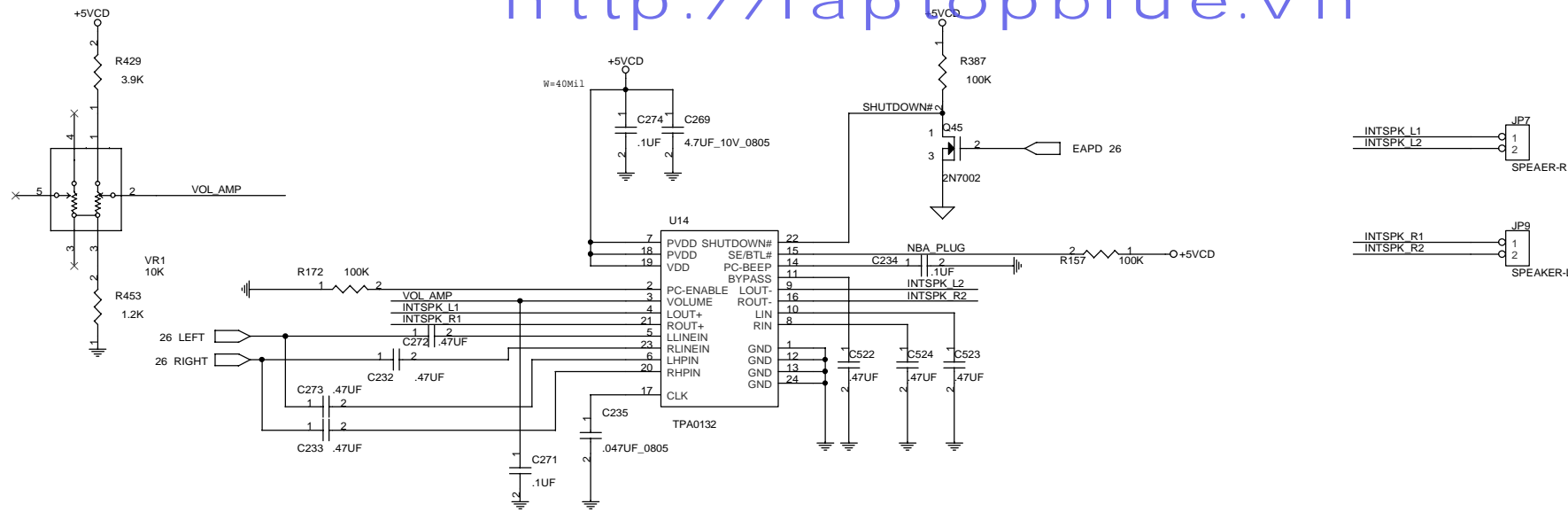
Compal Electronics, Inc.

Title		SCHEMATIC, M/B LA-1251
Size	Document Number	Rev
B	401197	1B
Date:	Thursday, February 07, 2002	Sheet 25 of 39

AC97 Codec

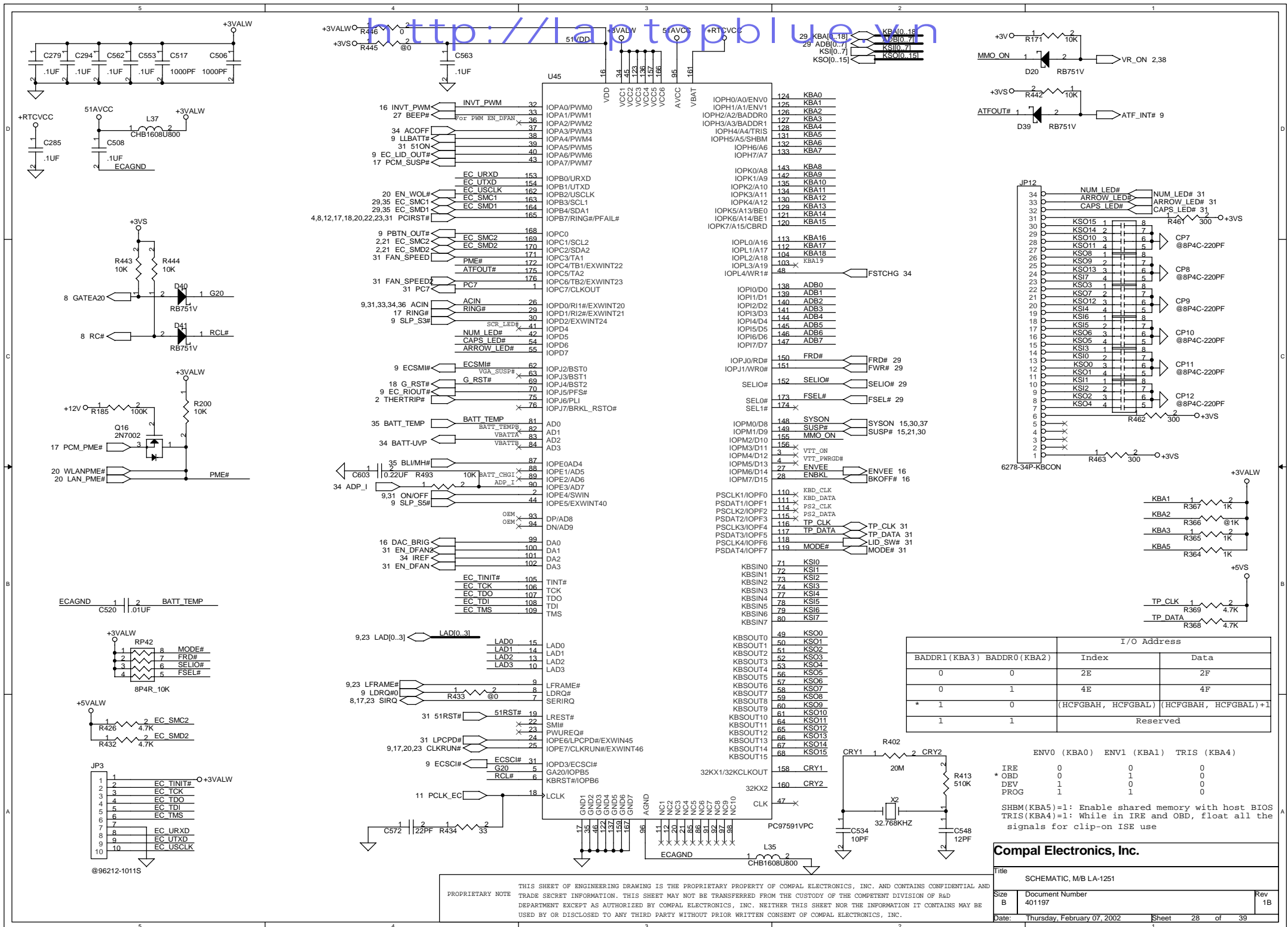


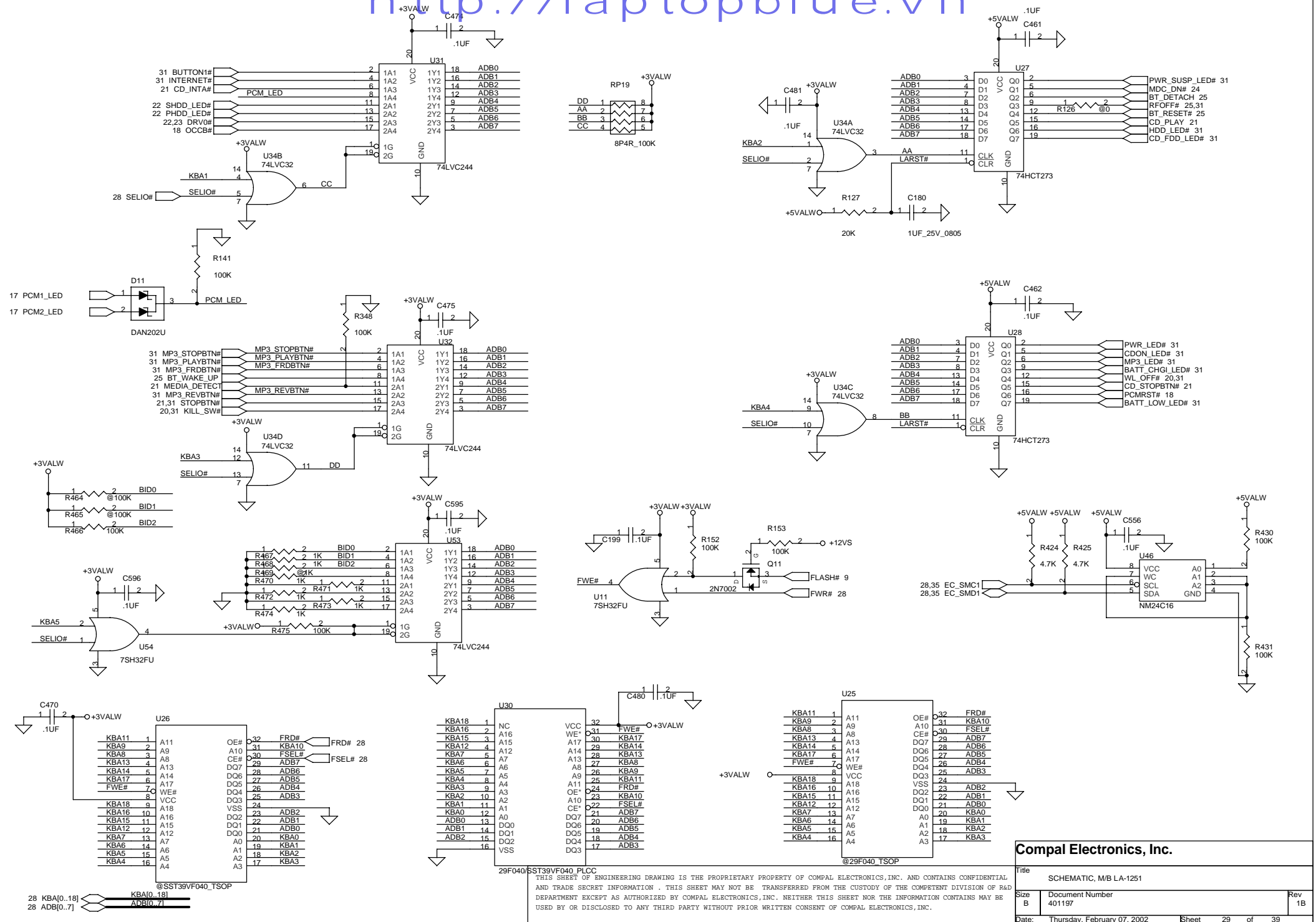
Compal Electronics, Inc.			
Title			
SCHEMATIC, M/B LA-1251			
Size B	Document Number 401197		
Date:	Thursday, February 07, 2002	Sheet	26 of 39
			Rev 1B



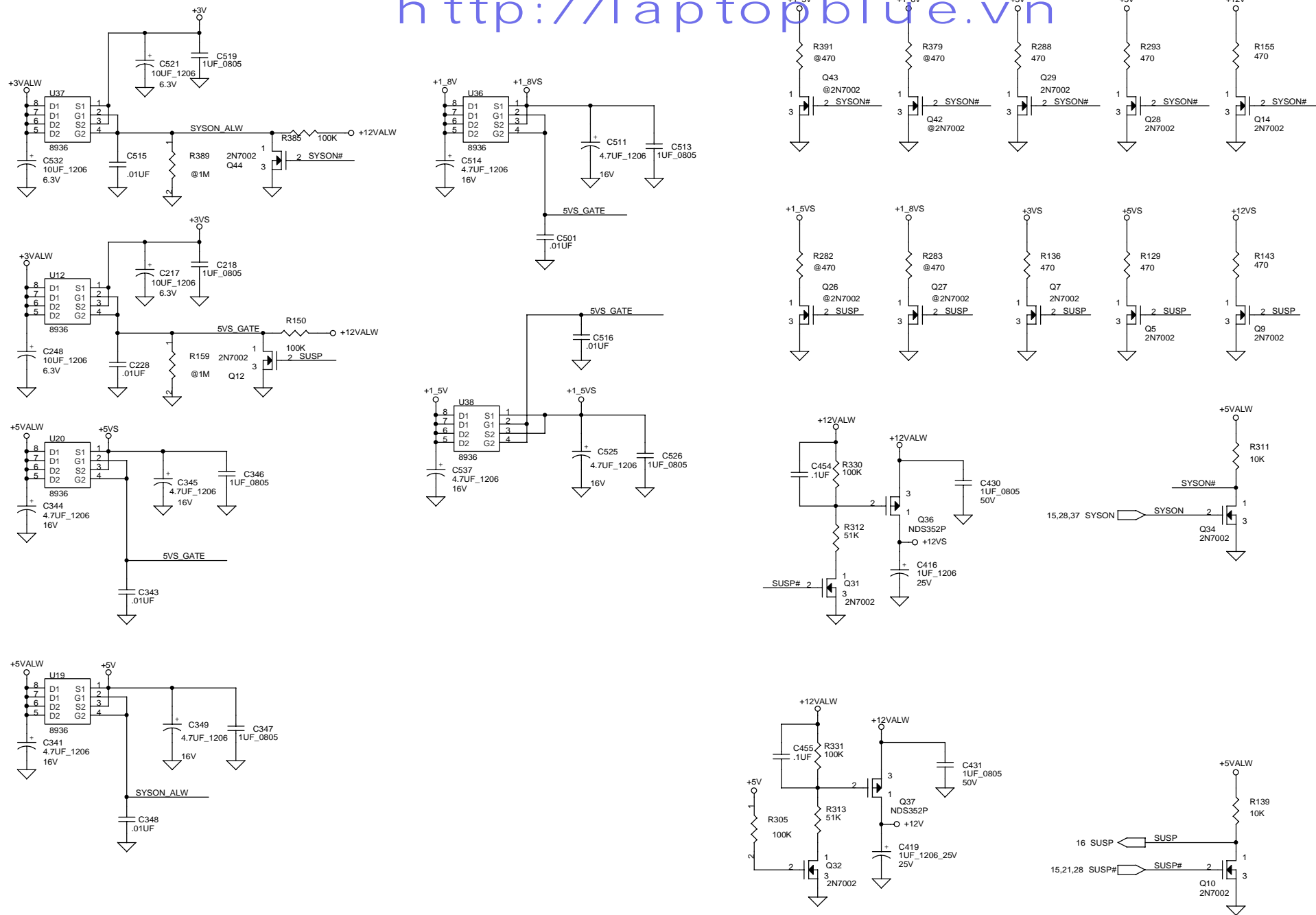
PROPRIETARY NOTE
THIS SHEET OF ENGINEERING DRAWING IS THE PROPRIETARY PROPERTY OF COMPAL ELECTRONICS, INC. AND CONTAINS CONFIDENTIAL AND TRADE SECRET INFORMATION. THIS SHEET MAY NOT BE TRANSFERRED FROM THE CUSTODY OF THE COMPETENT DIVISION OF R&D DEPARTMENT EXCEPT AS AUTHORIZED BY COMPAL ELECTRONICS, INC. NEITHER THIS SHEET NOR THE INFORMATION IT CONTAINS MAY BE USED BY OR DISCLOSED TO ANY THIRD PARTY WITHOUT PRIOR WRITTEN CONSENT OF COMPAL ELECTRONICS, INC.

Compal Electronics, Inc.			
SCHEMATIC, MB LA-1251			
Size B	Document Number 401197	Rev 1B	
Date:	Thursday, February 07, 2002	Sheet 27	of 39





http://laptopblue.vn



PROPRIETARY NOTE

THIS SHEET OF ENGINEERING DRAWING IS THE PROPRIETARY PROPERTY OF COMPAL ELECTRONICS, INC. AND CONTAINS CONFIDENTIAL AND TRADE SECRET INFORMATION. THIS SHEET MAY NOT BE TRANSFERRED FROM THE CUSTODY OF THE COMPETENT DIVISION OF R&D DEPARTMENT EXCEPT AS AUTHORIZED BY COMPAL ELECTRONICS, INC. NEITHER THIS SHEET NOR THE INFORMATION IT CONTAINS MAY BE USED BY OR DISCLOSED TO ANY THIRD PARTY WITHOUT PRIOR WRITTEN CONSENT OF COMPAL ELECTRONICS, INC.

Compal Electronics, Inc.

Title

SCHEMATIC, M/B LA-1251

Size B

Document Number

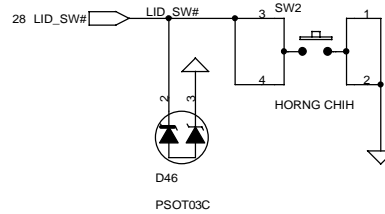
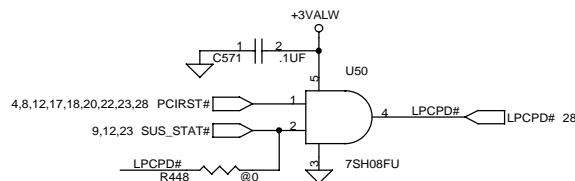
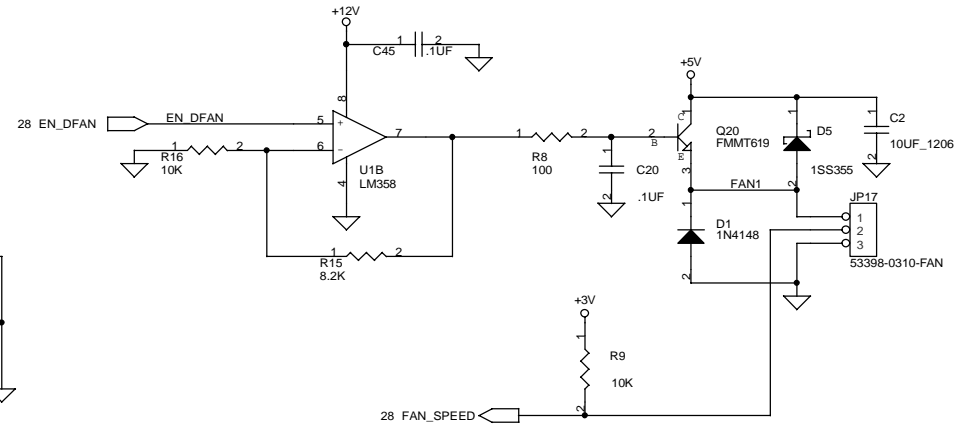
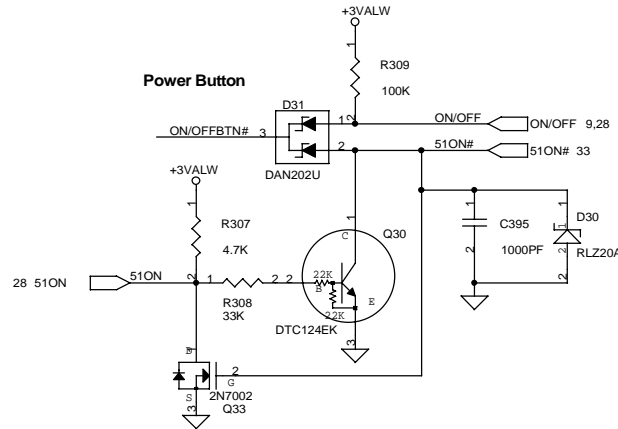
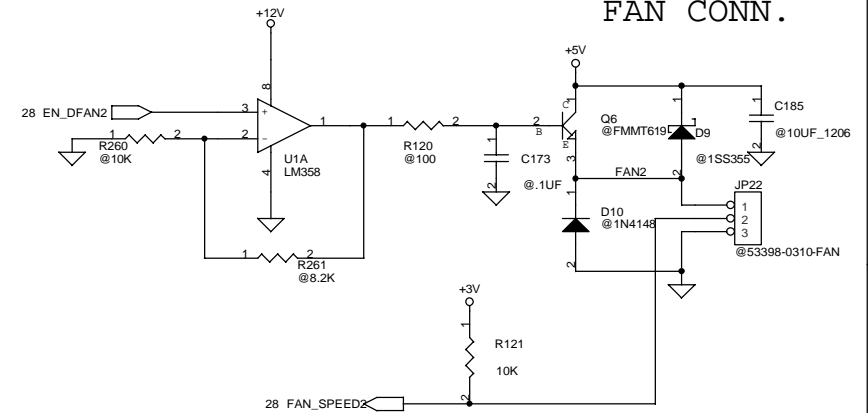
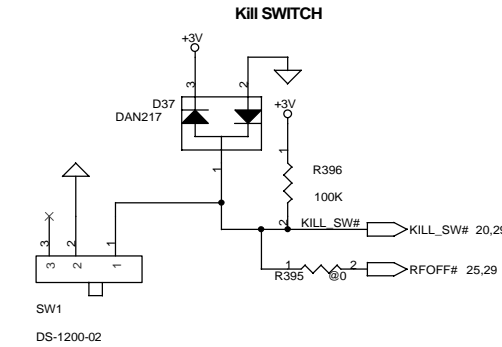
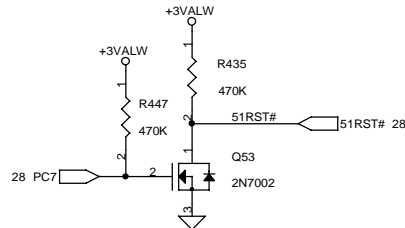
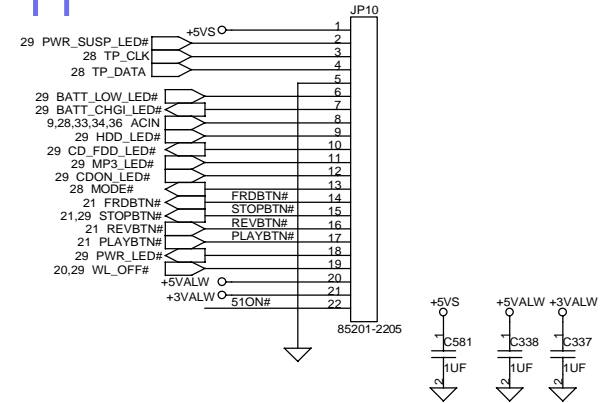
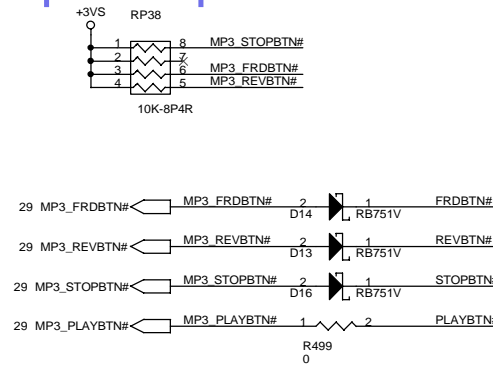
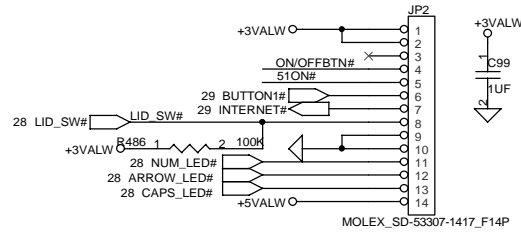
401197

Rev

1B

Date: Thursday, February 07, 2002

Sheet 30 of 39



For PC87591 REV 0.A Only

THIS SHEET OF ENGINEERING DRAWING IS THE PROPRIETARY PROPERTY OF COMPAL ELECTRONICS, INC. AND CONTAINS CONFIDENTIAL AND TRADE SECRET INFORMATION. THIS SHEET MAY NOT BE TRANSFERRED FROM THE CUSTODY OF THE COMPETENT DIVISION OF R&D DEPARTMENT EXCEPT AS AUTHORIZED BY COMPAL ELECTRONICS, INC. NEITHER THIS SHEET NOR THE INFORMATION CONTAINS MAY BE USED BY OR DISCLOSED TO ANY THIRD PARTY WITHOUT PRIOR WRITTEN CONSENT OF COMPAL ELECTRONICS, INC.

Compal Electronics, Inc.

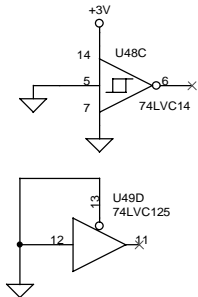
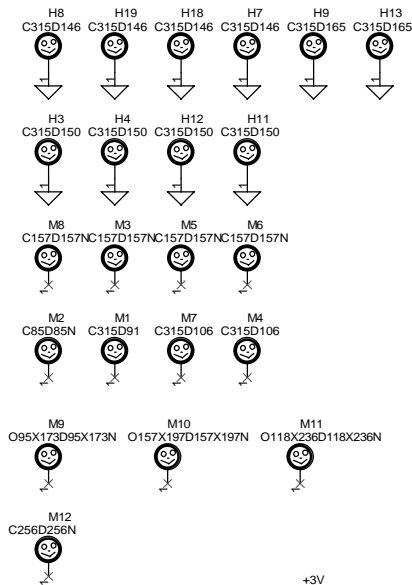
Title SCHEMATIC, M/B LA-1251

Size B Document Number 401197

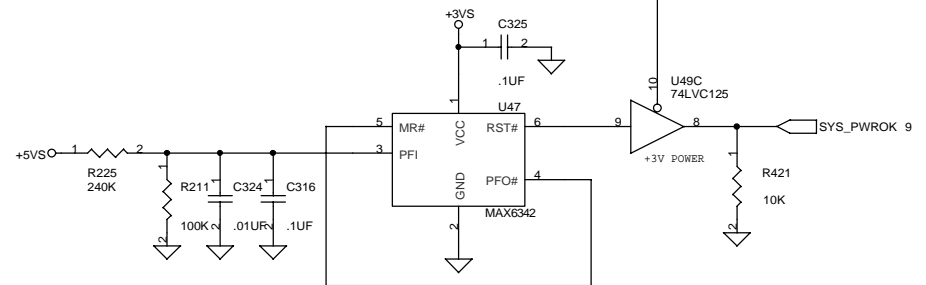
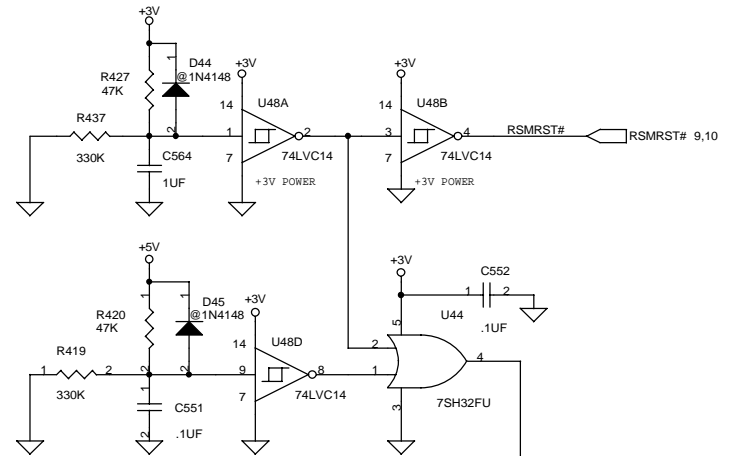
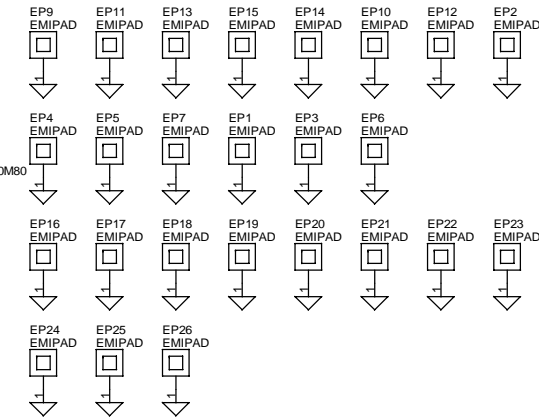
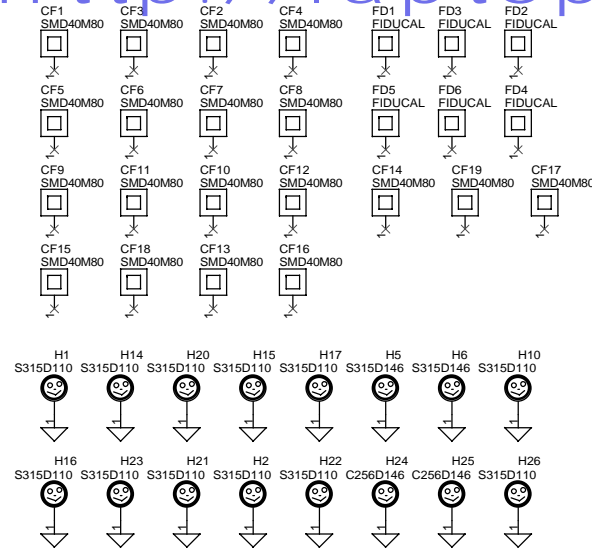
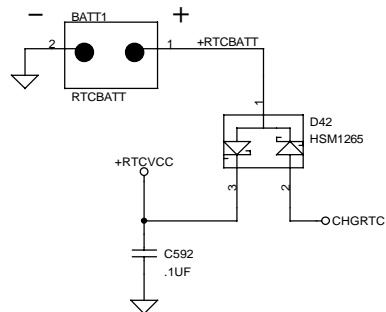
Rev 1B

Date: Thursday, February 07, 2002

Sheet 31 of 39



RTC BATT



PROPRIETARY NOTE

THIS SHEET OF ENGINEERING DRAWING IS THE PROPRIETARY PROPERTY OF COMPAL ELECTRONICS, INC. AND CONTAINS CONFIDENTIAL AND TRADE SECRET INFORMATION. THIS SHEET MAY NOT BE TRANSFERRED FROM THE CUSTODY OF THE COMPETENT DIVISION OF R&D DEPARTMENT EXCEPT AS AUTHORIZED BY COMPAL ELECTRONICS, INC. NEITHER THIS SHEET NOR THE INFORMATION IT CONTAINS MAY BE USED BY OR DISCLOSED TO ANY THIRD PARTY WITHOUT PRIOR WRITTEN CONSENT OF COMPAL ELECTRONICS, INC.

Compal Electronics, Inc.

SCHEMATIC, M/B LA-1251

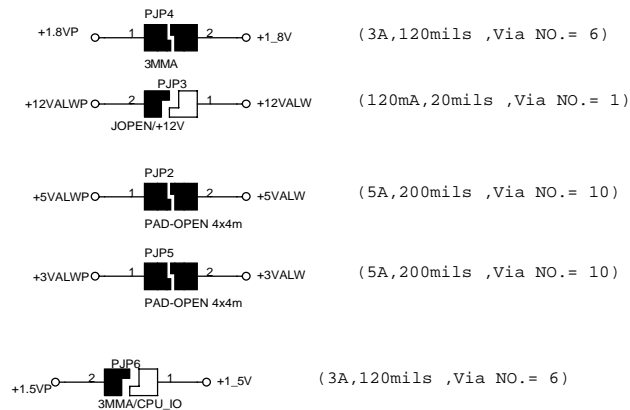
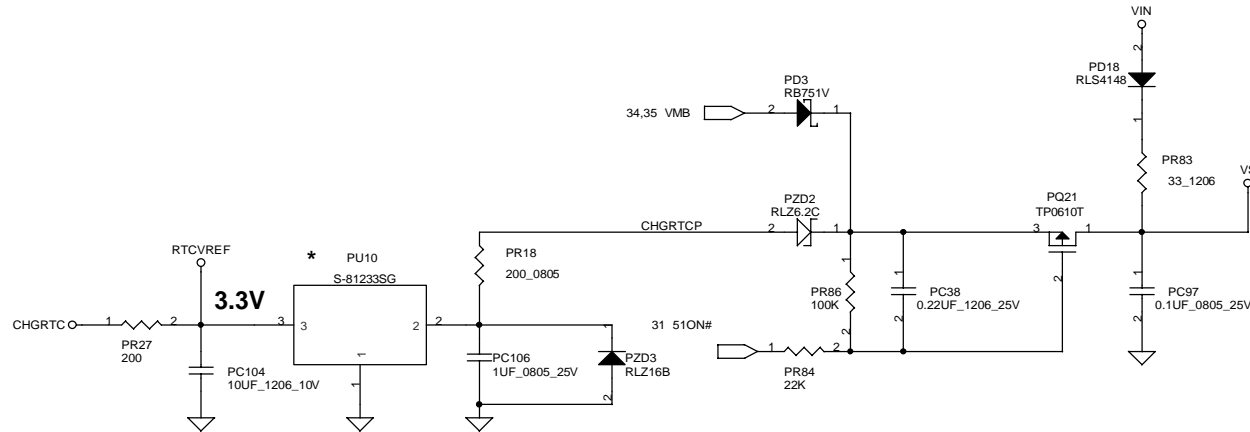
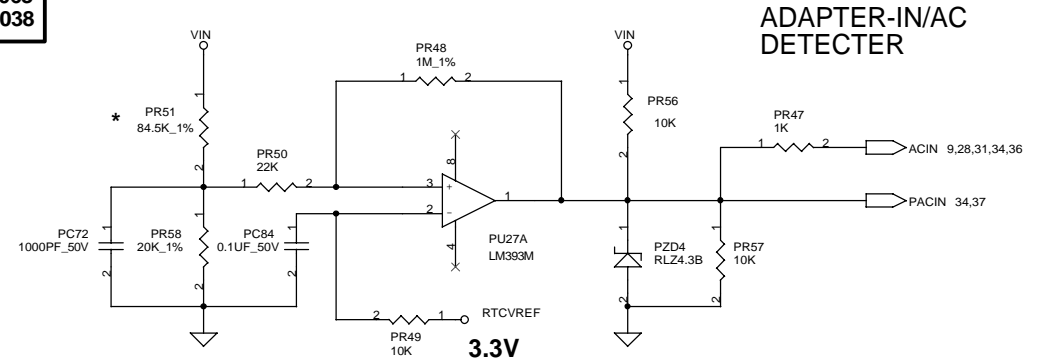
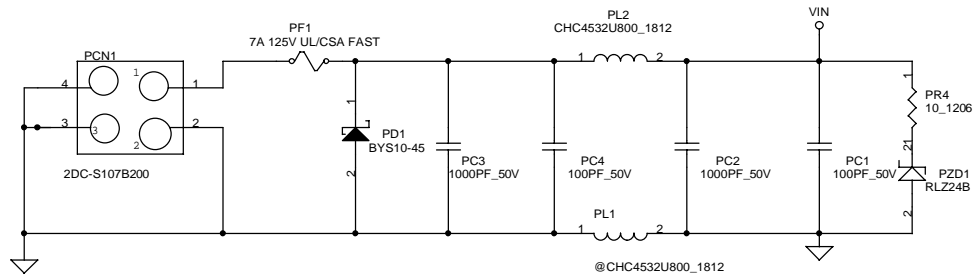
Document Number
401197

Rev
1B

Date: Thursday, February 07, 2002 Sheet 32 of 39

Vin Detector

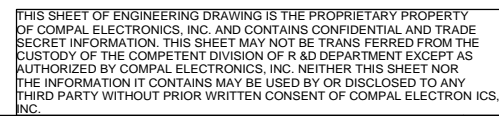
High 18.764 17.901 17.063
Low 17.745 16.903 16.038



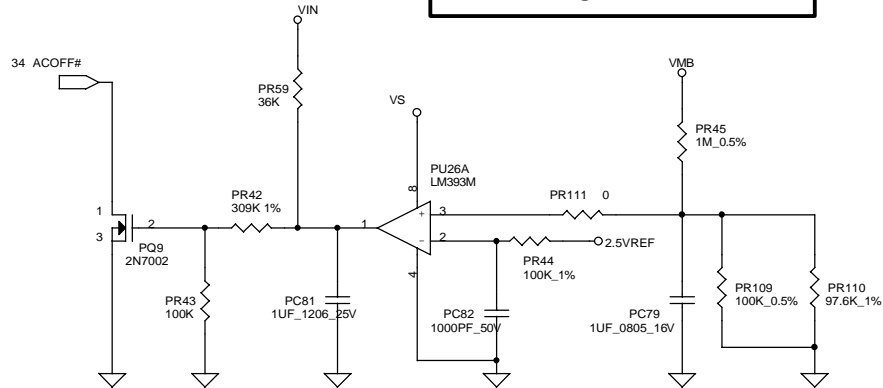
THIS SHEET OF ENGINEERING DRAWING IS THE PROPRIETARY PROPERTY OF COMPAL ELECTRONICS, INC. AND CONTAINS CONFIDENTIAL AND TRADE SECRET INFORMATION. THIS SHEET MAY NOT BE TRANSFERRED FROM THE CUSTODY OF THE COMPETENT DIVISION OF R & D DEPARTMENT EXCEPT AS AUTHORIZED BY COMPAL ELECTRONICS, INC. NEITHER THIS SHEET NOR THE INFORMATION IT CONTAINS MAY BE USED BY OR DISCLOSED TO ANY THIRD PARTY WITHOUT PRIOR WRITTEN CONSENT OF COMPAL ELECTRONICS, INC.

Compal Electronics, Inc.

Title		SCHEMATIC, M/B LA-1251	
Size	Document Number	401197	Rev
B			1B
Date:	Thursday, February 07, 2002	Sheet	33 of 39

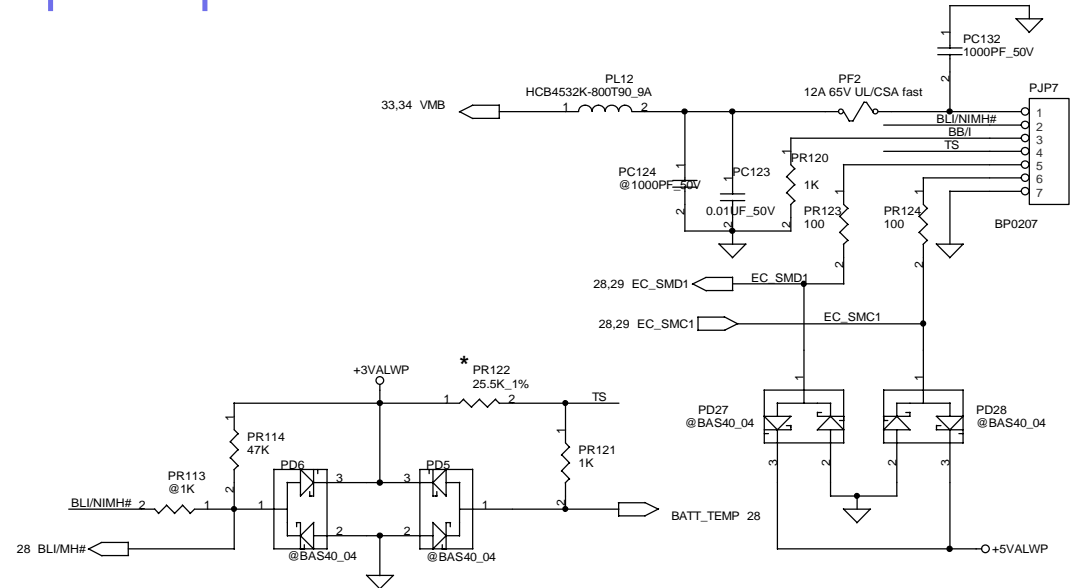
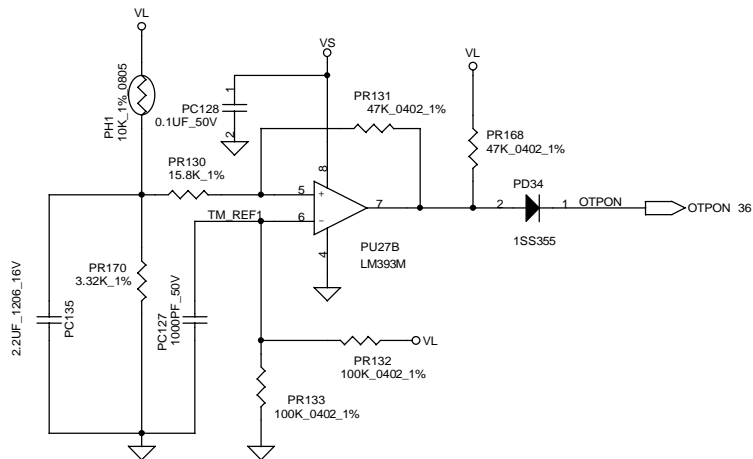


12 Cells Charger OVP : 18.059V



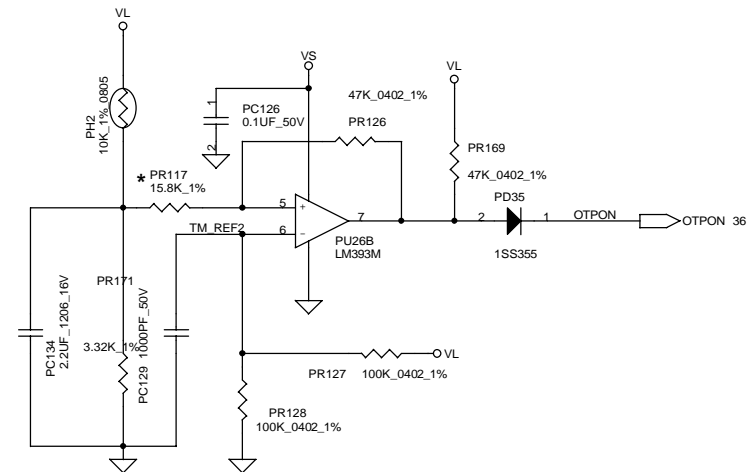
PH1 under CPU botten side :

CPU thermal protection at 82 degree C
Recovery at 50 degree C



PH2 near main Battery CONN :

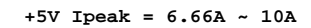
BAT. thermal protection at 82 degree C
Recovery at 50 degree C

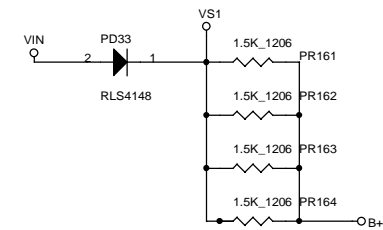
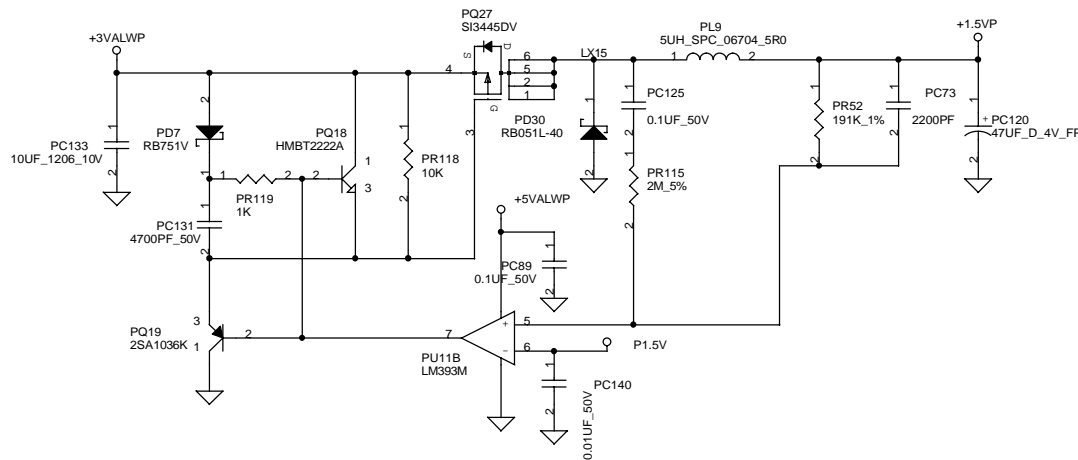
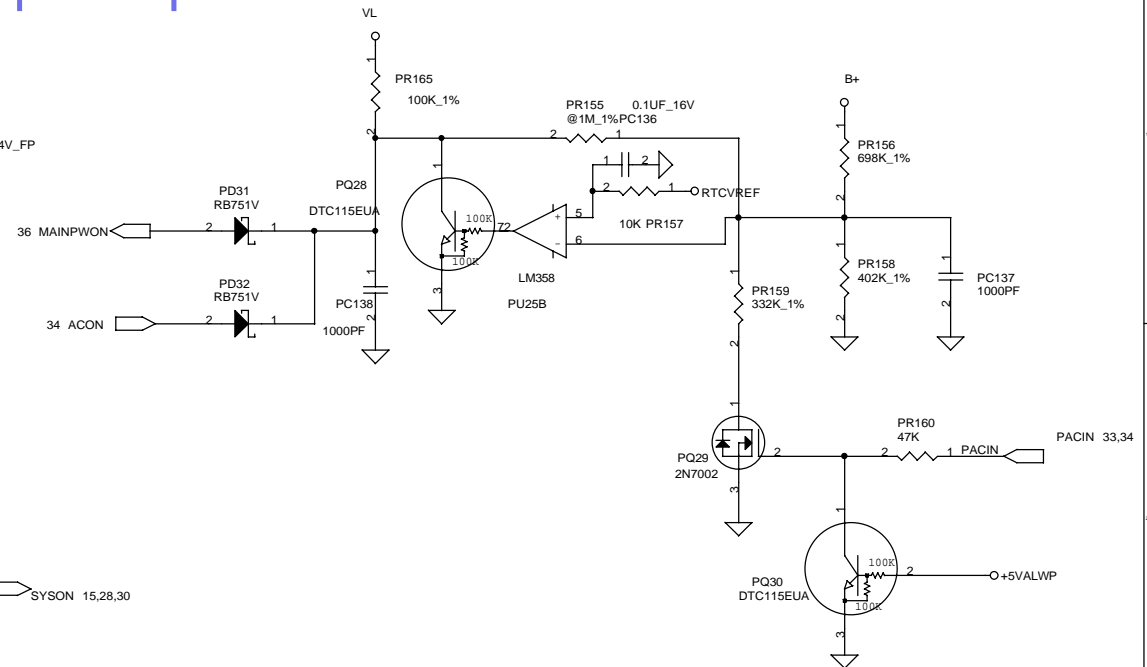
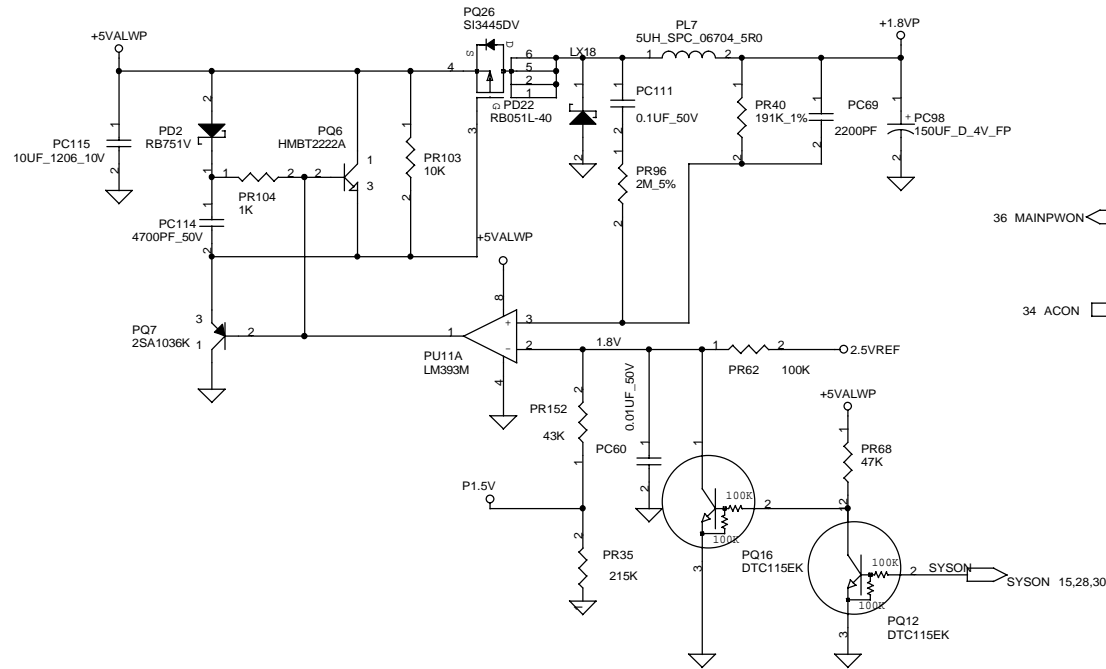


THIS SHEET OF ENGINEERING DRAWING IS THE PROPRIETARY PROPERTY OF COMPAL ELECTRONICS, INC. AND CONTAINS CONFIDENTIAL AND TRADE SECRET INFORMATION. THIS SHEET MAY NOT BE TRANSFERRED FROM THE CUSTODY OF THE COMPETENT DIVISION OF R & D DEPARTMENT EXCEPT AS AUTHORIZED BY COMPAL ELECTRONICS, INC. NEITHER THIS SHEET NOR THE INFORMATION IT CONTAINS MAY BE USED BY OR DISCLOSED TO ANY THIRD PARTY WITHOUT PRIOR WRITTEN CONSENT OF COMPAL ELECTRONICS, INC.

Compal Electronics, Inc.

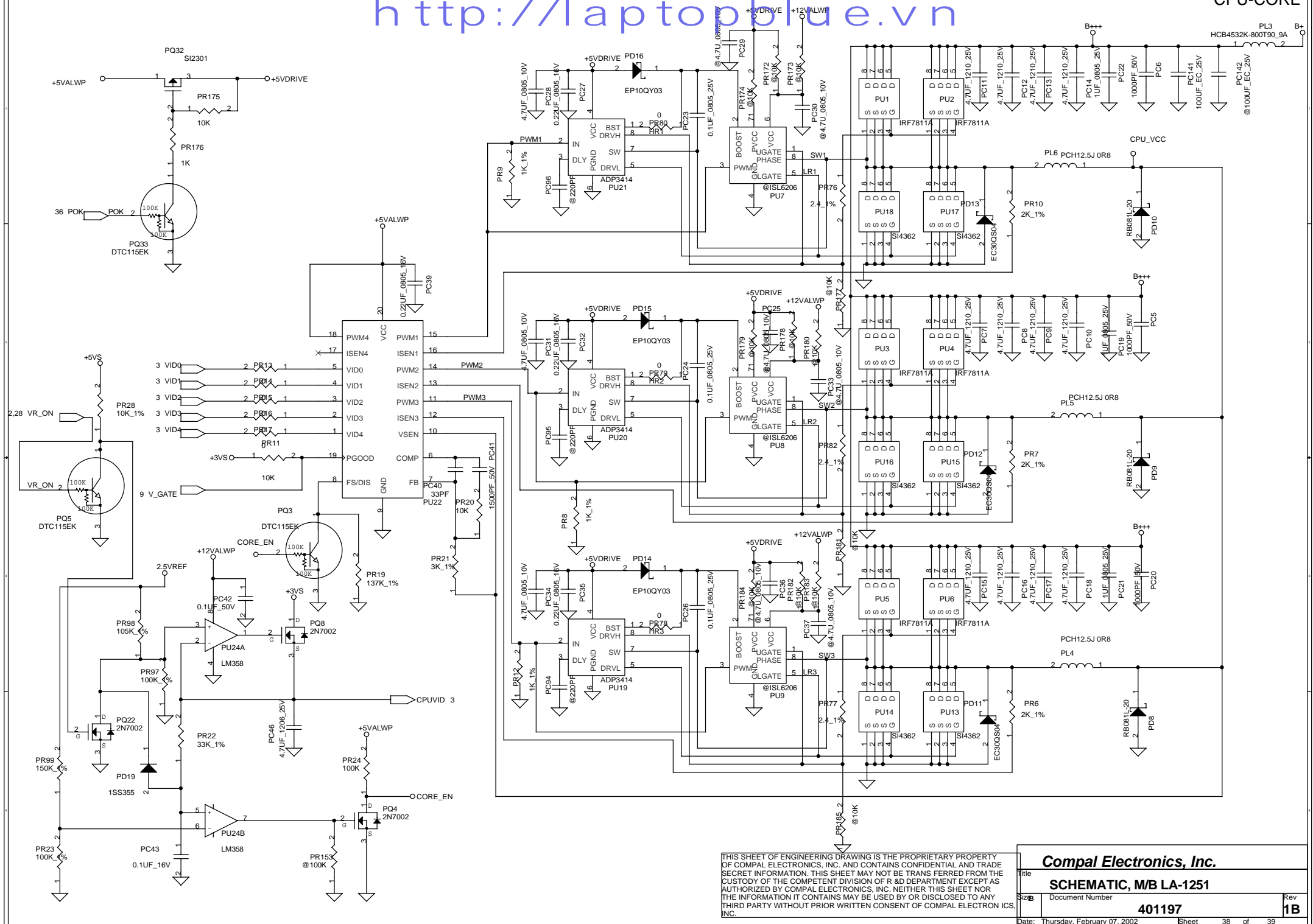
Title		SCHEMATIC, M/B LA-1251	
Size	Document Number	401197	
B		Rev 1B	
Date:	Thursday, February 07, 2002	Sheet	35 of 39





THIS SHEET OF ENGINEERING DRAWING IS THE PROPRIETARY PROPERTY OF COMPAL ELECTRONICS, INC. AND CONTAINS CONFIDENTIAL AND TRADE SECRET INFORMATION. THIS SHEET MAY NOT BE TRANSFERRED FROM THE CUSTODY OF THE COMPETENT DIVISION OF R & D DEPARTMENT EXCEPT AS AUTHORIZED BY COMPAL ELECTRONICS, INC. NEITHER THIS SHEET NOR THIRD PARTY WITHOUT PRIOR WRITTEN CONSENT OF COMPAL ELECTRONICS, INC. THE INFORMATION IT CONTAINS MAY BE USED BY OR DISCLOSED TO ANY

Compal Electronics, Inc.		
Title	SCHEMATIC, M/B LA-1251	
Size	Document Number	Rev
B	401197	1B
Date: Thursday, February 07, 2002	Sheet	37 of 39



ATR10 PIR LIST

HW PIR LIST

ATEST 9/6~

1	+2.5V LEVEL ERROR	Remove R111 100ohm Change R108 from 100 to 0 ohm	P15
2	SDRAM BANK select error	Change CLK_SDRAM3 from U22.F3 to U22.E3 Change CLK_SDRAM5 from U22.H5 to U22.G5 Change RRAS#3 from U22.H7 to U22.F7 Change RRAS#5 from U22.G6 to U22.H6	P5
3	Add CPU VCCVID pin	Add R492 connect to U23.AF3	P3
4	TV OUT output error	Change CRMA from U8.AF15 to U8.AF16 Change LUMA from U8.AF16 to U8.AF15	P12
5	Add MK1707 output terminate	Add R494 22 ohm	P12
6	Add low pass filter for MK1707 power pin	Add L47	P12
7	Change VGA option resistor to jumper	Change R284 to J3 Change R286 to J4 Change R295 to J5 Change R296 to J6	P15
8	Reserve +2.5V option control	Add R495 for SYSON control Add R496 for SUSP control	P15
9	Change LCD connector type	Change JP1	P16
10	Add TI TPS2042 for USB protect circuit	Add U56(TPS2042)	P25

PWR PIR LIST

PROPRIETARY NOTE THIS SHEET OF ENGINEERING DRAWING IS THE PROPRIETARY PROPERTY OF COMPAL ELECTRONICS, INC. AND CONTAINS CONFIDENTIAL AND TRADE SECRET INFORMATION. THIS SHEET MAY NOT BE TRANSFERRED FROM THE CUSTODY OF THE COMPETENT DIVISION OF R&D DEPARTMENT EXCEPT AS AUTHORIZED BY COMPAL ELECTRONICS, INC. NEITHER THIS SHEET NOR THE INFORMATION IT CONTAINS MAY BE USED BY OR DISCLOSED TO ANY THIRD PARTY WITHOUT PRIOR WRITTEN CONSENT OF COMPAL ELECTRONICS, INC.

Compal Electronics, Inc.			
Title SCHEMATIC, M/B LA-1251			
Size	Document Number		Rev
Custom	401197		1B
Date:	Thursday, February 07, 2002	Sheet	39 of 39