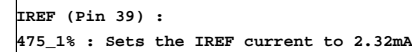


QUANTA
COMPUTER

Size	Document Number
	RJ5 Main Board

Date: Tuesday, May 10, 2005 Sheet 2 of 36

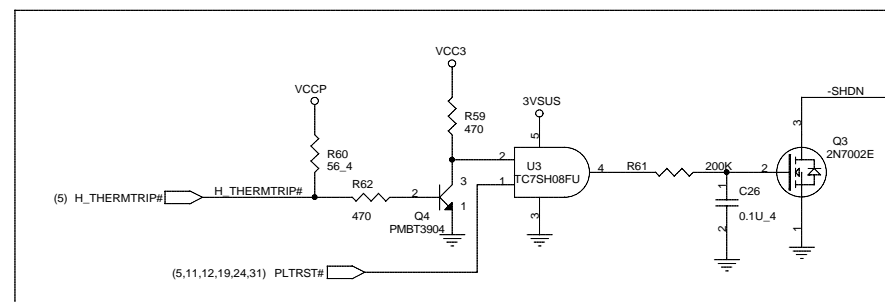
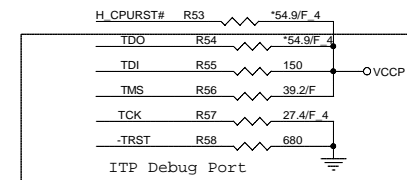


SEL_LCD					VCO	17,18	Spread		SEL_LCD					VCO	17,18	Spread	
SS3	SS2	SS1	SS0		MHZ	MHZ	%		SS3	SS2	SS1	SS0	MHZ	MHZ	%		
1	0	0	0	0	500	100	+/-1.5	Center	0	0	0	0	0	864	27	+/-0.25	Down
1	0	0	0	1	500	100	+/-1.25		0	0	0	0	1	864	27	+/-0.5	
1	0	0	1	0	500	100	+/-1.0		0	0	0	1	0	864	27	+/-0.75	
1	0	0	1	1	500	100	+/-0.8		0	0	0	1	1	864	27	+/-1	
1	0	1	0	0	500	100	+/-0.6		0	0	1	0	0	864	27	+/-1.25	
1	0	1	0	1	500	100	+/-0.5		0	0	1	0	1	864	27	+/-1.5	
1	0	1	1	0	500	100	+/-0.4		0	0	1	1	0	864	27	+/-1.75	
1	0	1	1	1	500	100	+/-0.3		0	0	1	1	1	864	27	+/-2	
1	1	0	0	0	500	100	3	Down	0	1	0	0	0	864	27	-0.5	Down
1	1	0	0	1	500	100	2.5		0	1	0	0	1	864	27	-1	
1	1	0	1	0	500	100	2		0	1	0	1	0	864	27	-1.25	
1	1	0	1	1	500	100	1.75		0	1	0	1	1	864	27	-1.5	
1	1	1	0	0	500	100	1.5		0	1	1	0	0	864	27	-1.75	
1	1	1	0	1	500	100	1.25		0	1	1	0	1	864	27	-2	
1	1	1	1	0	500	100	1		0	1	1	1	0	864	27	-2.5	
1	1	1	1	1	500	100	0.8		0	1	1	1	1	864	27	-3	

FSC BSEL0	FSB BSEL1	FSA BSEL2	CPU	SRC	PCI	REF	USB	DOT	Spread %
0	0	0	266.66	100	33.33	14.318	48	96	0.5 Down
* 0	0	1	133.33	100	33.33	14.318	48	96	0.5 Down
0	1	0	200.00	100	33.33	14.318	48	96	0.5 Down
0	1	1	166.66	100	33.33	14.318	48	96	0.5 Down
1	0	0	333.33	100	33.33	14.318	48	96	0.5 Down
* 1	0	1	100.00	100	33.33	14.318	48	96	0.5 Down
1	1	0	400.00	100	33.33	14.318	48	96	0.5 Down
1	1	1	200.00	100	33.33	14.318	48	96	0.5 Down

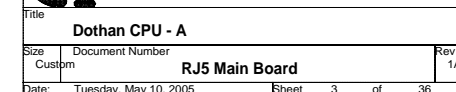
1.This part should not contain any substances which are specified in SS-00259-1

2. Purchase ink, paint, wire rods and molding resins only from the business partners that Sony approves as Green Partners.

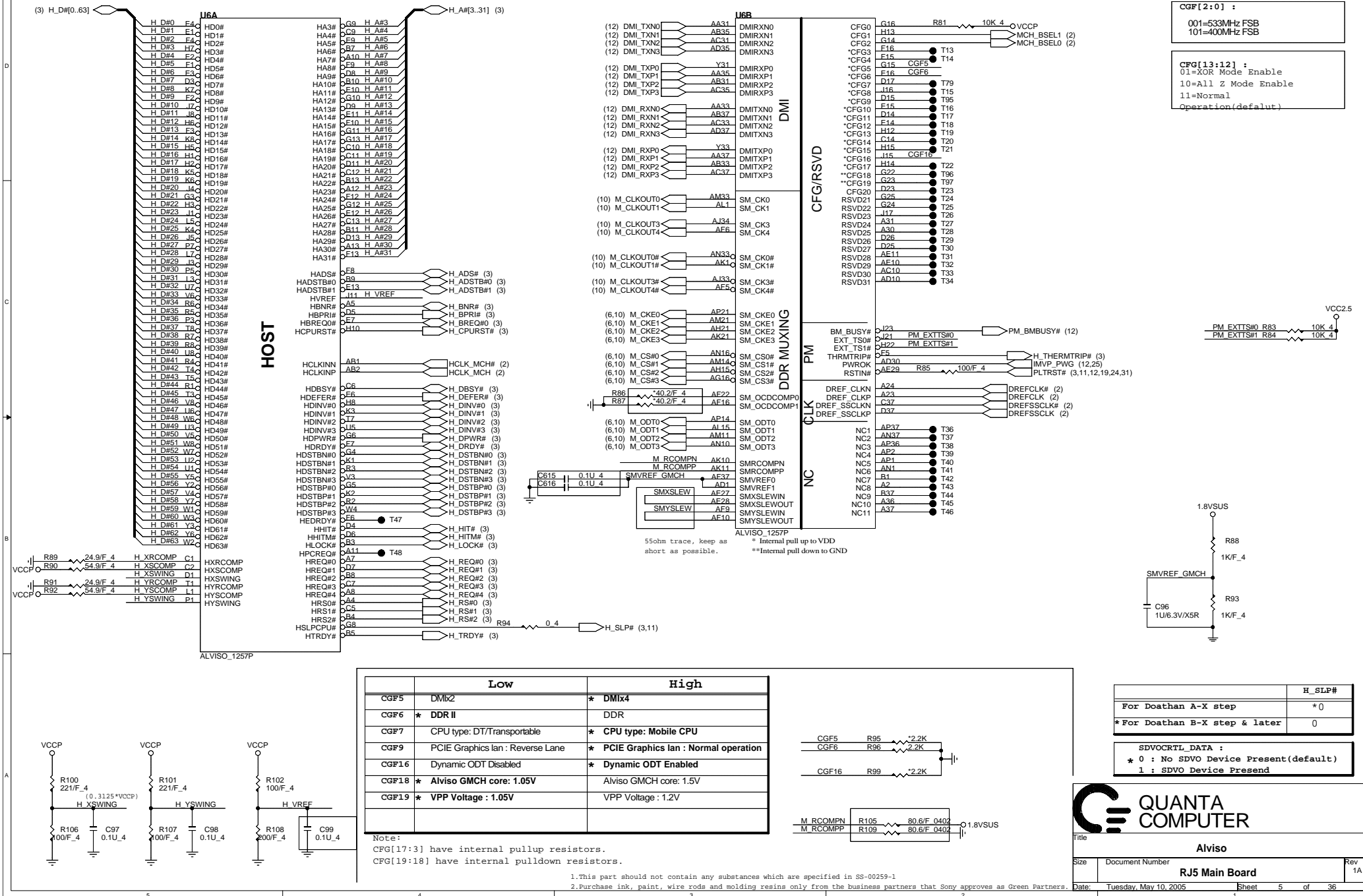


The schematic diagram illustrates the internal circuitry of the LM86 module. Key components include:

- Transistors:** Q5 (NPN), Q6 (NPN), and Q7 (NPN) are used for signal processing.
- Resistors:** R64 (200K), R66 (10K_4), R67 (8.2K), R70 (10K_4), and R69 (10K_4).
- Capacitors:** C27 (2.2U/10V/X5R), C28 (0.1U_4), C29 (0.1U_4), and C30 (2200P).
- LM86 Chip:** The central component with pins labeled VCC, SMBCLK, ALERT, SMDATA, T_CRIT_A, D+, D-, and GND.
- Connections:**
 - VCC3 is connected to various points throughout the circuit.
 - (26) -SHDN is connected to the base of Q5.
 - (12) -LM86_ALERT is connected to the ALERT pin of the LM86 chip.
 - SMBCLK and SMDATA signals are connected to the corresponding pins of the LM86 chip.
 - T_CRIT_A is connected to the T_CRIT_A pin of the LM86 chip.
 - GND is connected to the GND pin of the LM86 chip.
 - M86_VCC1, M86_ALERT, M86_SMBCLK, and M86_SMDATA are external module signals.
 - THERMDC and THERMDA are temperature-related signals.







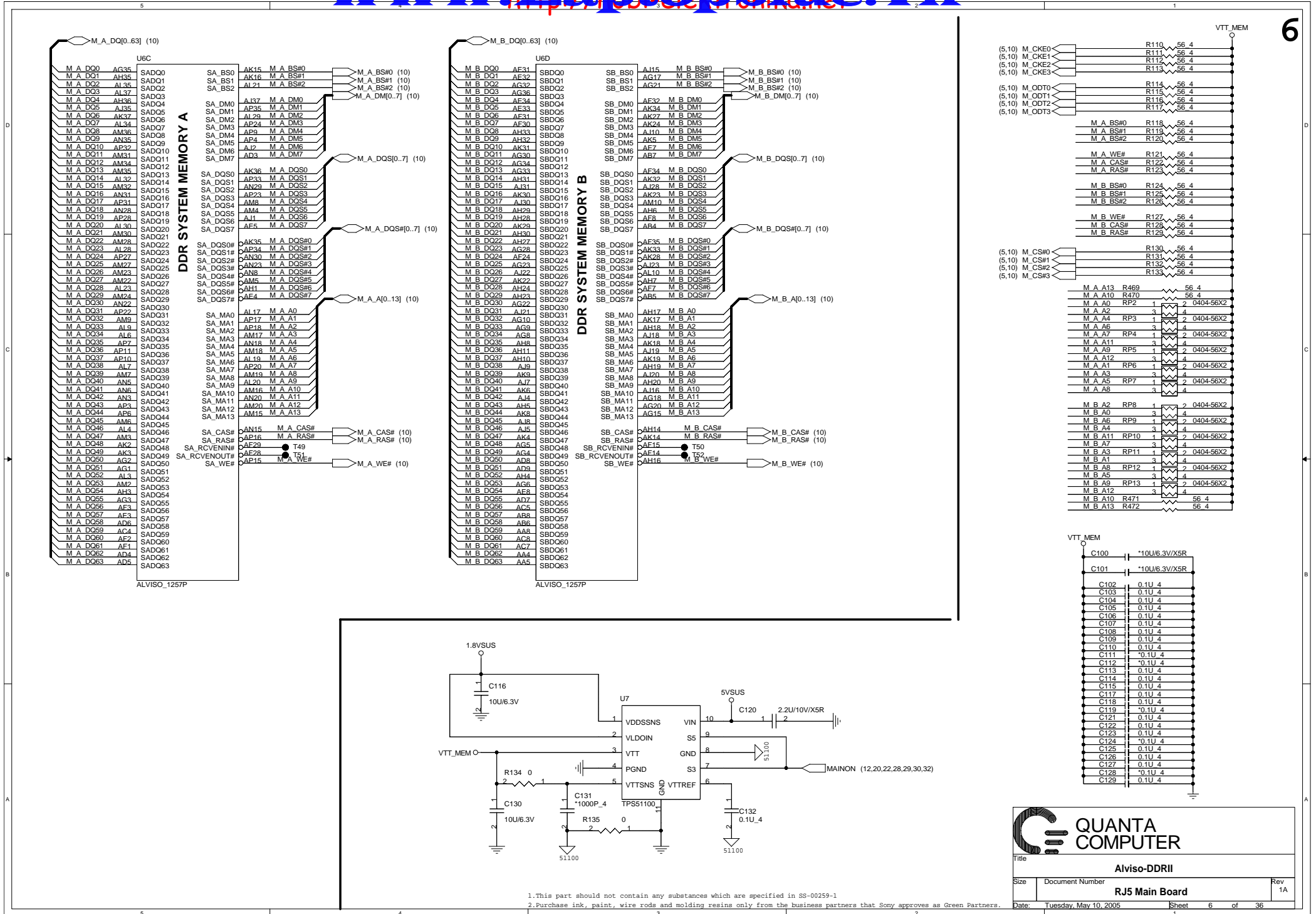
QUANTA COMPUTER

Title: Alviso

Size: Document Number: Rev 1A

RJ5 Main Board

Date: Tuesday, May 10, 2005 Sheet 5 of 36



(5,10) M_CKE0	R110	56 4
(5,10) M_CKE1	R111	56 4
(5,10) M_CKE2	R112	56 4
(5,10) M_CKE3	R113	56 4
(5,10) M_ODT0	R114	56 4
(5,10) M_ODT1	R115	56 4
(5,10) M_ODT2	R116	56 4
(5,10) M_ODT3	R117	56 4
M_A BS#0	R118	56 4
M_A BS#1	R119	56 4
M_A BS#2	R120	56 4
M_A WE#	R121	56 4
M_A CAS#	R122	56 4
M_A RAS#	R123	56 4
M_B BS#0	R124	56 4
M_B BS#1	R125	56 4
M_B BS#2	R126	56 4
M_B WE#	R127	56 4
M_B CAS#	R128	56 4
M_B RAS#	R129	56 4
(5,10) M_CS#0	R130	56 4
(5,10) M_CS#1	R131	56 4
(5,10) M_CS#2	R132	56 4
(5,10) M_CS#3	R133	56 4
M_A A13	R469	56 4
M_A A10	R470	56 4
M_A A0	RP2	1 2 0404-56X2
M_A A2	RP3	3 4 2 0404-56X2
M_A A4	RP4	1 2 0404-56X2
M_A A6	RP5	3 4 2 0404-56X2
M_A A8	RP6	1 2 0404-56X2
M_A A10	RP7	3 4 2 0404-56X2
M_A A12	RP8	1 2 0404-56X2
M_B A2	RP9	3 4 2 0404-56X2
M_B A0	RP10	1 2 0404-56X2
M_B A4	RP11	3 4 2 0404-56X2
M_B A6	RP12	1 2 0404-56X2
M_B A8	RP13	3 4 2 0404-56X2
M_B A10	R471	56 4
M_B A12	R472	56 4

VTT_MEM	C100	*10U/6.3V/X5R
	C101	*10U/6.3V/X5R
	C102	0.1U_4
	C103	0.1U_4
	C104	0.1U_4
	C105	0.1U_4
	C106	0.1U_4
	C107	0.1U_4
	C108	0.1U_4
	C109	0.1U_4
	C110	0.1U_4
	C111	*0.1U_4
	C112	*0.1U_4
	C113	0.1U_4
	C114	0.1U_4
	C115	0.1U_4
	C116	0.1U_4
	C117	0.1U_4
	C118	0.1U_4
	C119	*0.1U_4
	C120	0.1U_4
	C121	0.1U_4
	C122	0.1U_4
	C123	0.1U_4
	C124	*0.1U_4
	C125	0.1U_4
	C126	0.1U_4
	C127	0.1U_4
	C128	*0.1U_4
	C129	0.1U_4

QUANTA COMPUTER

Title: **Alviso-DDRII**

Size: Document Number

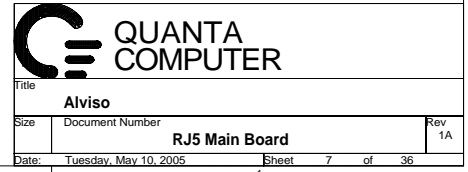
Rev: 1A

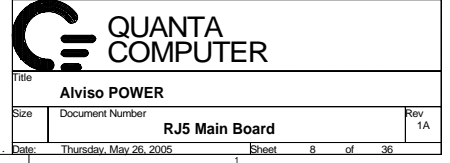
RJ5 Main Board

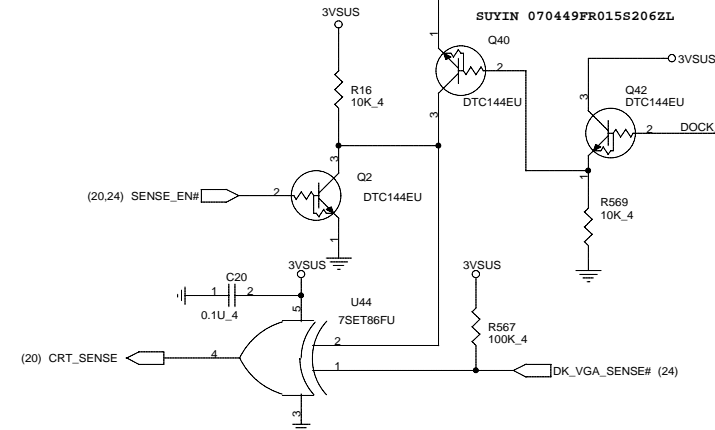
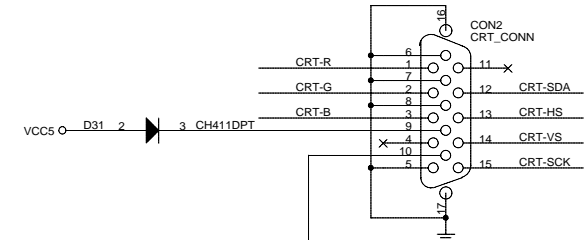
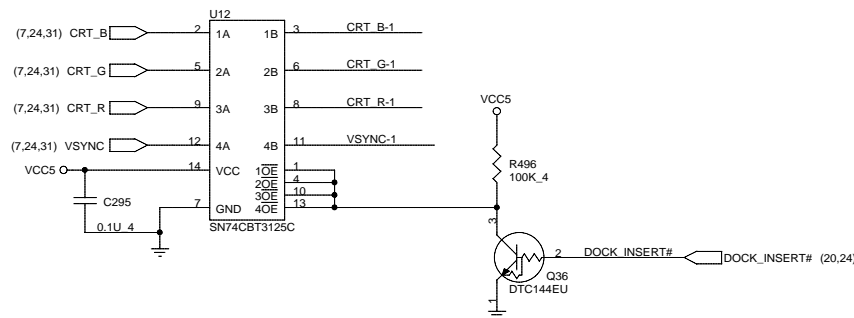
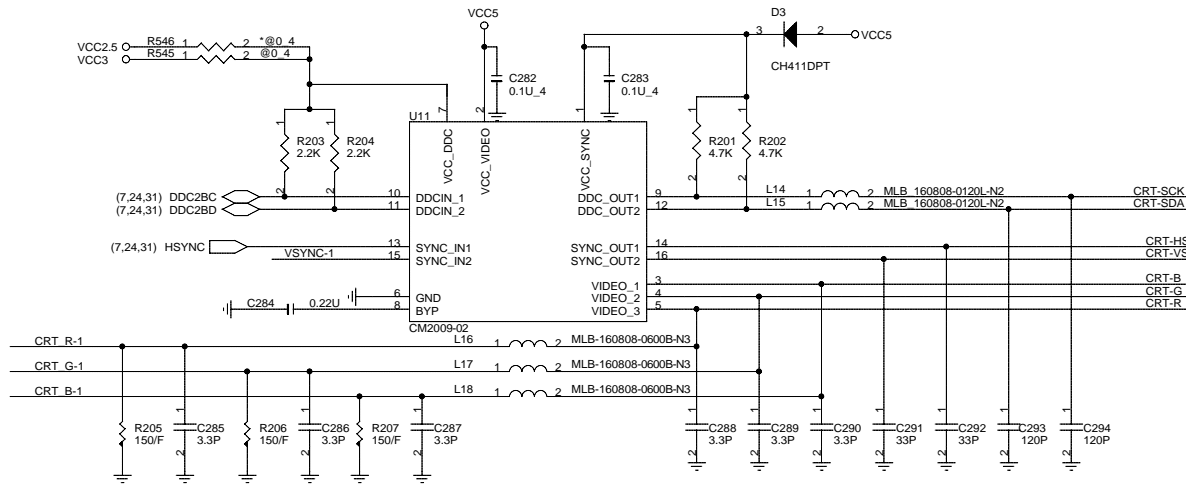
Date: Tuesday, May 10, 2005

Sheet 6 of 36

1. This part should not contain any substances which are specified in SS-00259-1
 2. Purchase ink, paint, wire rods and molding resins only from the business partners that Sony approves as Green Partners.







	SENSE_EN#	MB CRT	DOCK CRT	DOCK DVI	CRT_SENSE
All no Plug	L	H	H	L	L
MB CRT Plug	L	L	H	L	H
DOCK CRT Plug	L	H	L	L	H
DOCK DVI Plug	L	H	H	H	H
SENSE EN	H	X	X	X	L
DOCK CRT/DVI Plug	L	H	L	H	L
DOCK CRT/MB CRT Plug	L	L	L	L	L

7SET86FU

A	B	Y
H	H	L
H	L	H
L	H	H
L	L	L

Signal		915GM	915PM
VCC_DDC	R545	NI	0_4
	R546	0_4	NI

QUANTA COMPUTER

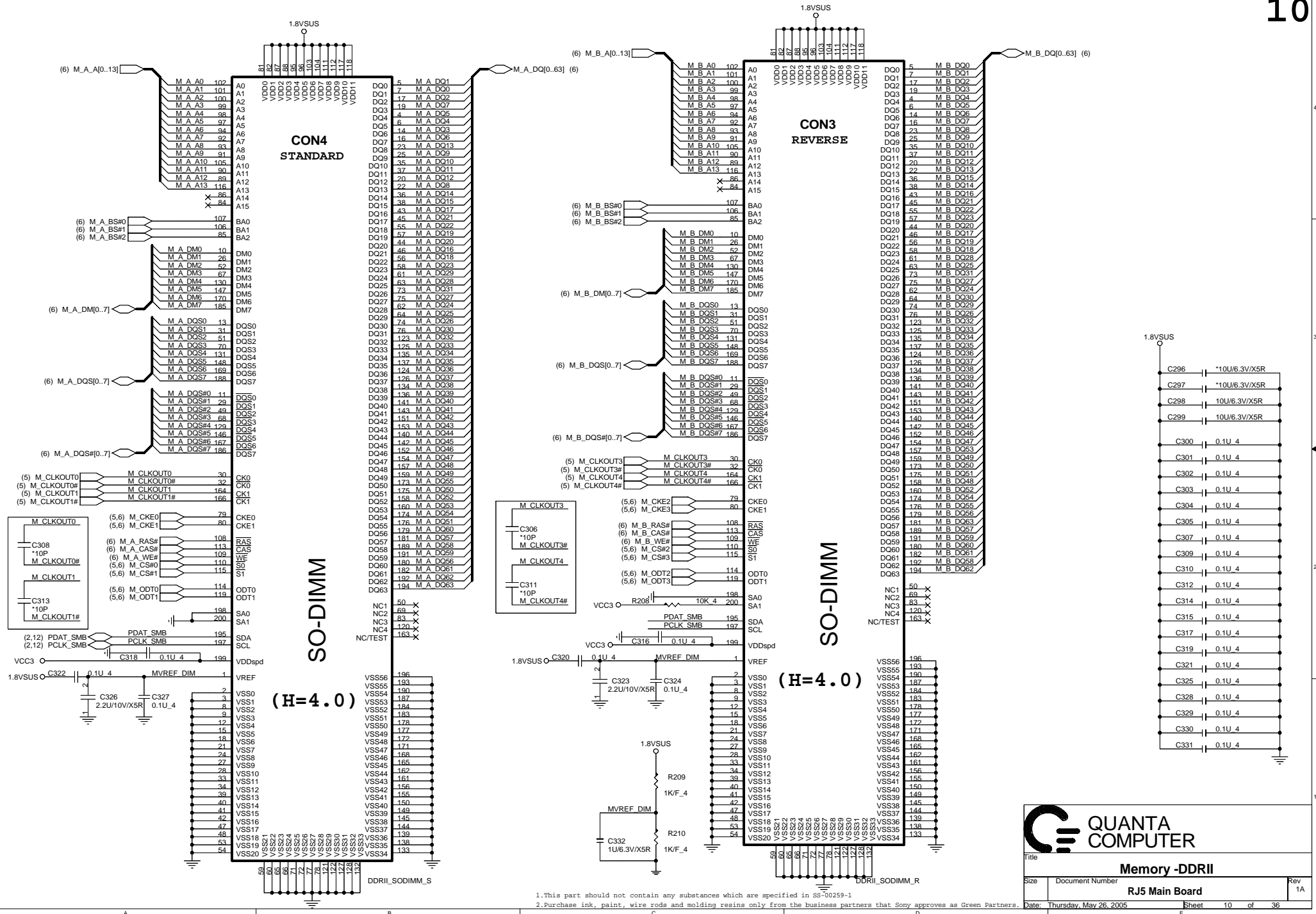
Title: CRT

Size: Document Number

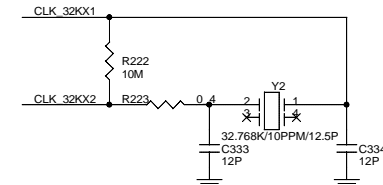
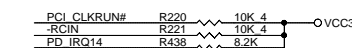
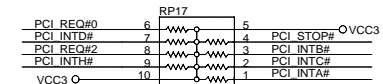
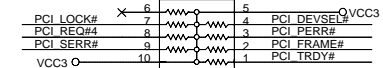
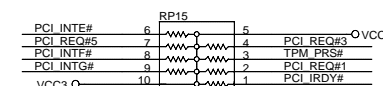
Date: Tuesday, May 10, 2005

Rev 1A

Sheet 9 of 36



	H_DPRSTP#	H_SLP#
For Dothan A-X step	*0	0
*For Dothan B-X step & later	0	*0

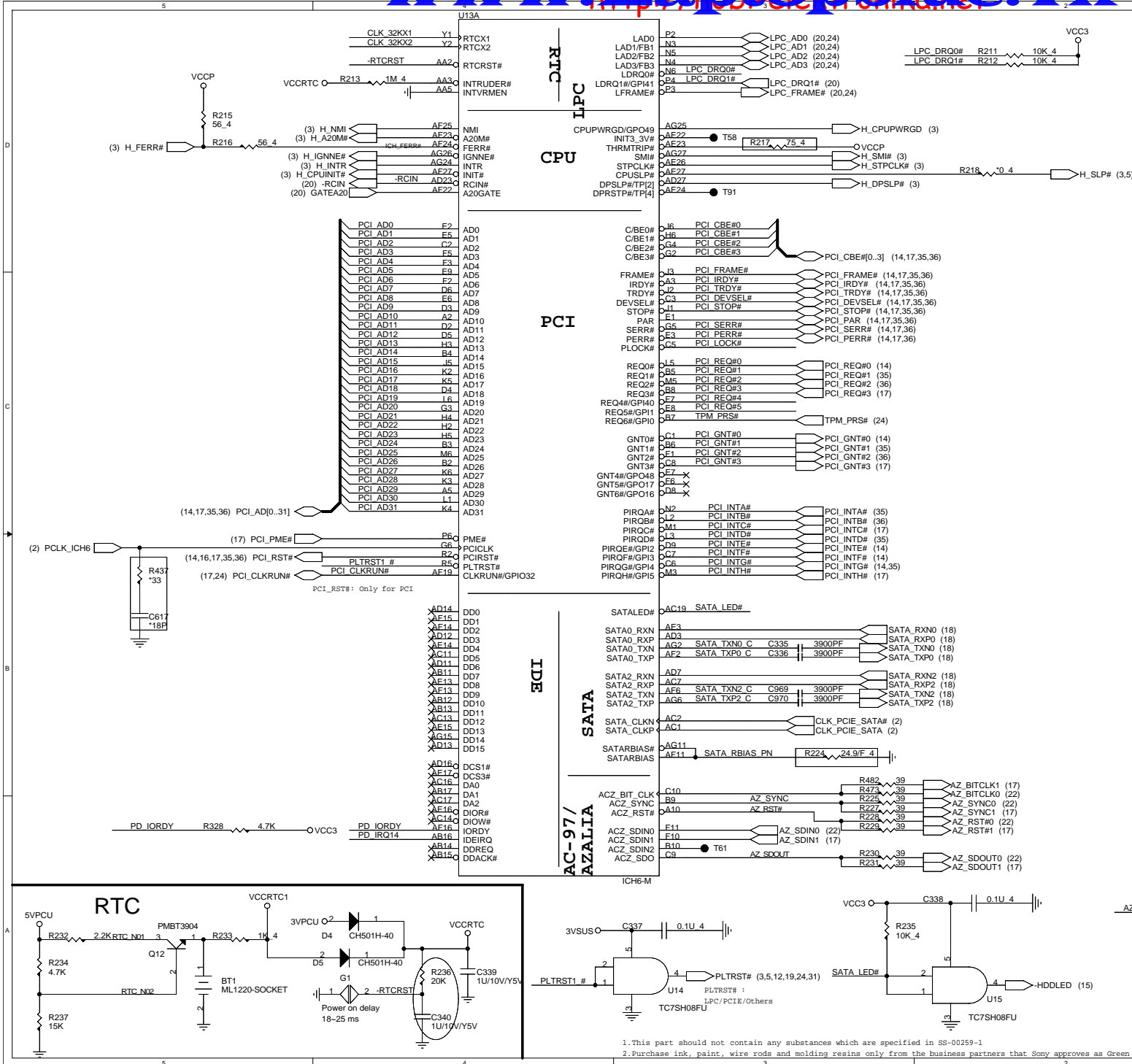


PCI_REQ0 : TI-7411
 PCI_REQ1 : VT6212
 PCI_REQ2 : SATA(s11 3512)
 PCI_REQ3 : MINI PCI
 PCI_REQ4 :
 PCI_REQ5 : X
 PCI_REQ6 : X
 IDSEL: (AD16 ~ 29)
 AD24 : SATA(s11 3512)
 AD25 : TI-7411
 AD26 : MINI PCI
 AD27: VT6212

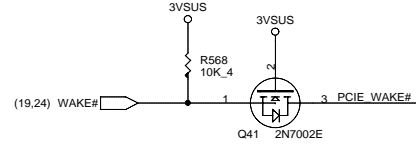
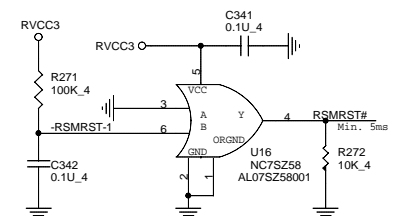
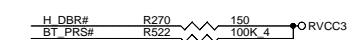
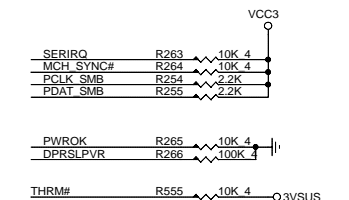
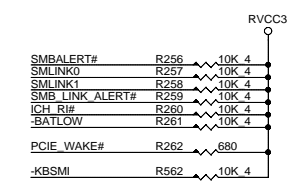
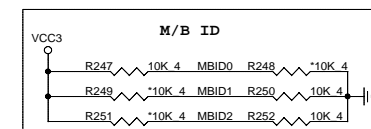
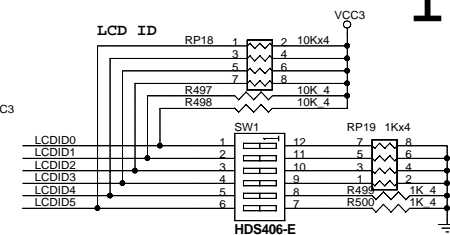
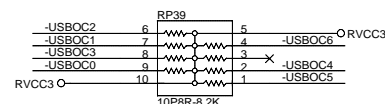
PCI_INTA# : VT6212
 PCI_INTB# : SATA(s11 3512)
 PCI_INTC# : MINI PCI
 PCI_INTD# : VT6212
 PCI_INTE# : TI-7411
 PCI_INTF# : TI-7411
 PCI_INTG# : TI-7411, VT6212
 PCI_INT# : MINI PCI



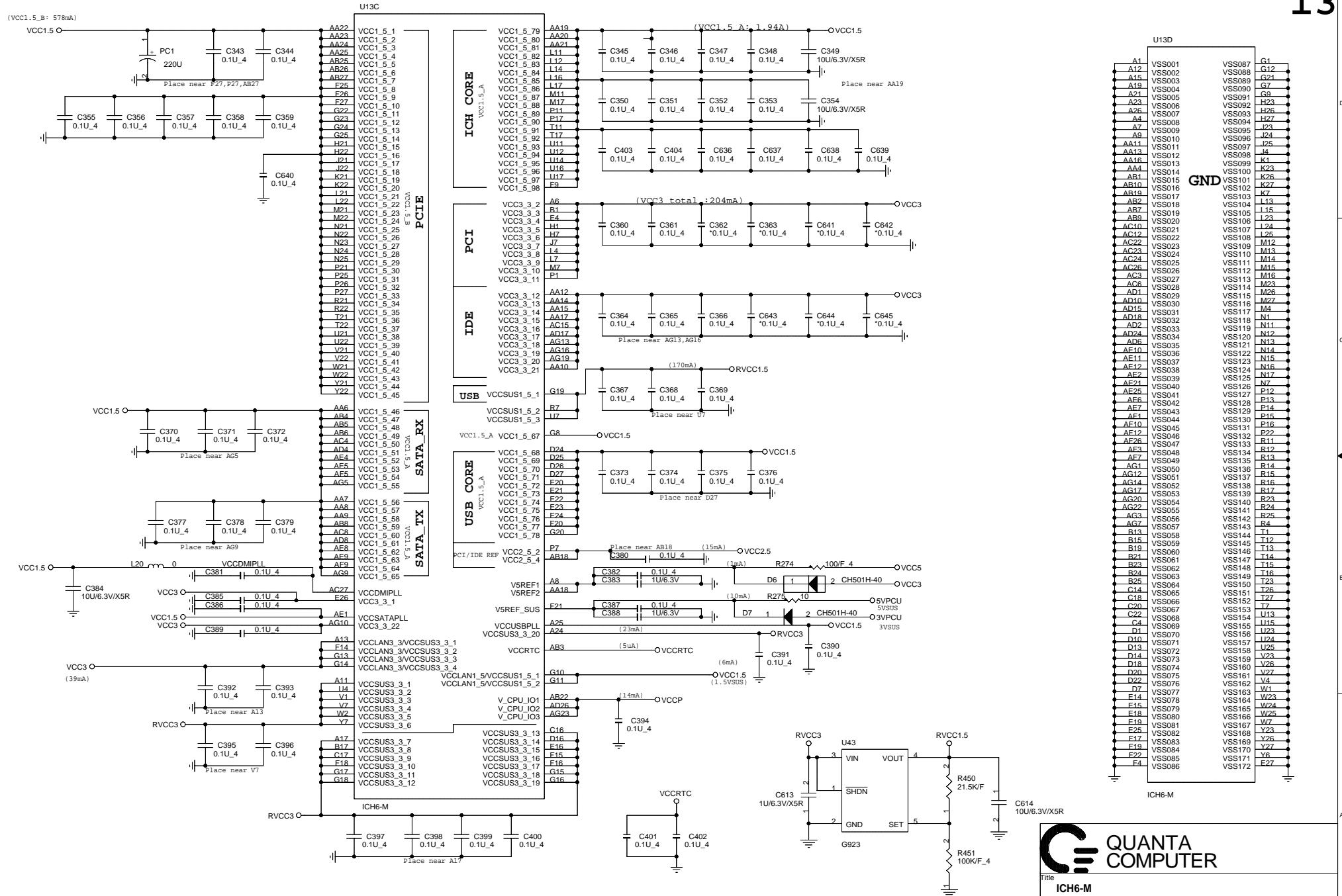
Title		ICH6-M		Rev	
Size		Document Number		1A	
Date:		Tuesday, May 10, 2005		Sheet 11 of 36	
		RJ5 Main Board			



1. This part should not contain any substances which are specified in SS-00259-1
 2. Purchase ink, paint, wire rods and molding resins only from the business partners that Sony approves as Green Partners.



Title			
ICH6-M			
Size	Document Number	Rev	
	RJ5 Main Board	1A	
Date:	Tuesday, May 10, 2005	Sheet	12 of 36



1. This part should not contain any substances which are specified in SS-00259-1
2. Purchase ink, paint, wire rods and molding resins only from the business partners that Sony approves as Green Partners

QUANTA COMPUTER

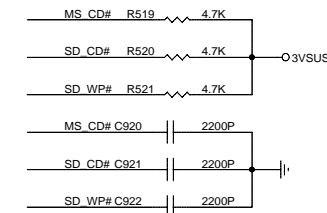
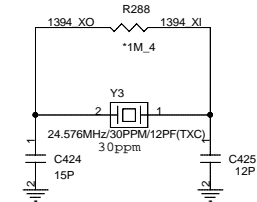
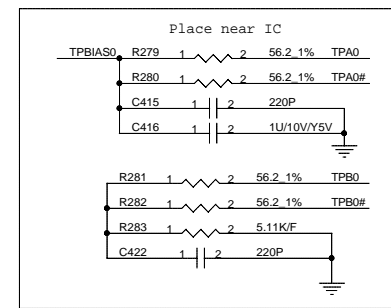
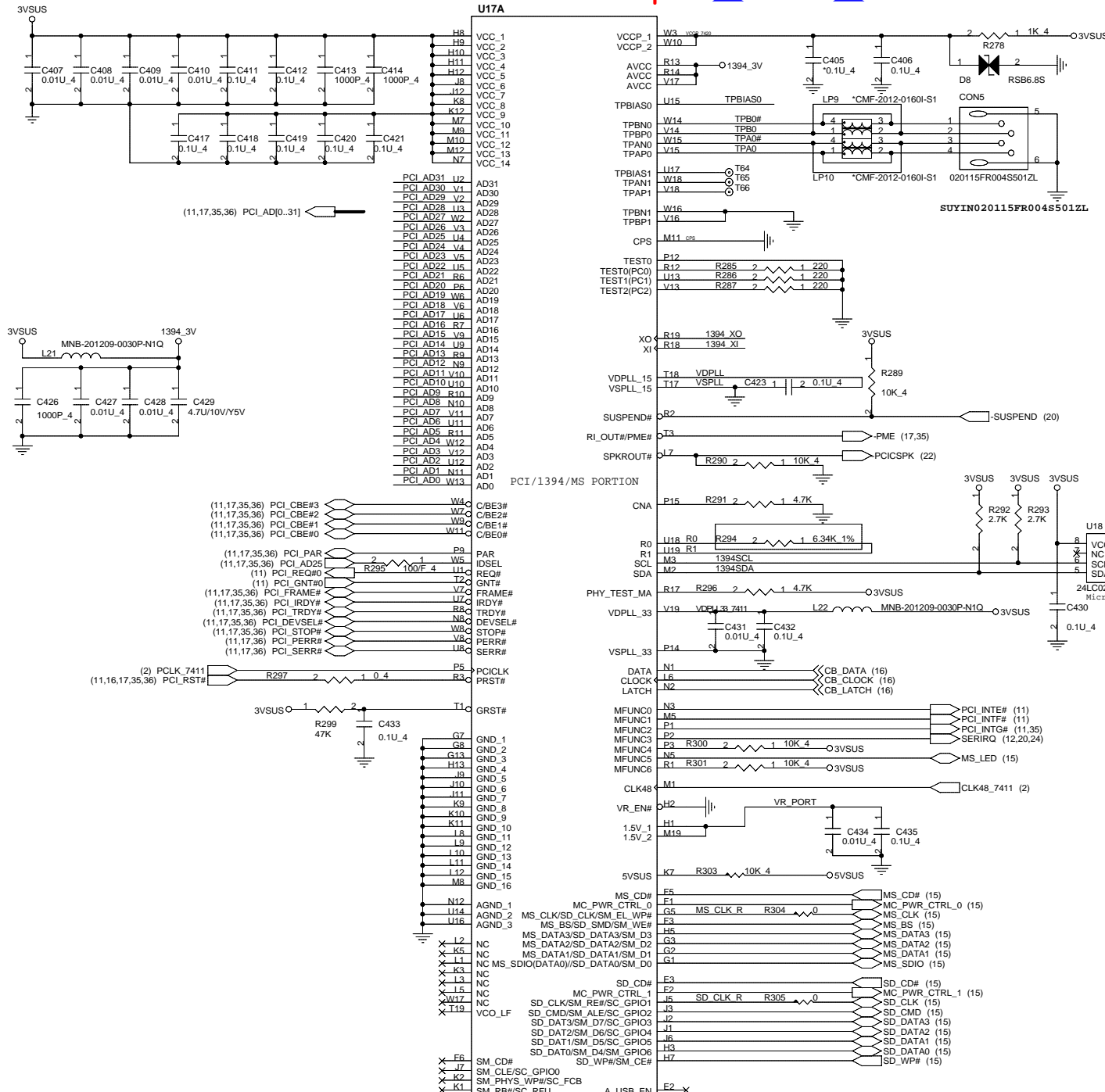
Title: ICH6-M

Size: Document Number

Date: Friday, April 22, 2005

Rev: 1A

Sheet: 13 of 36



QUANTA COMPUTER

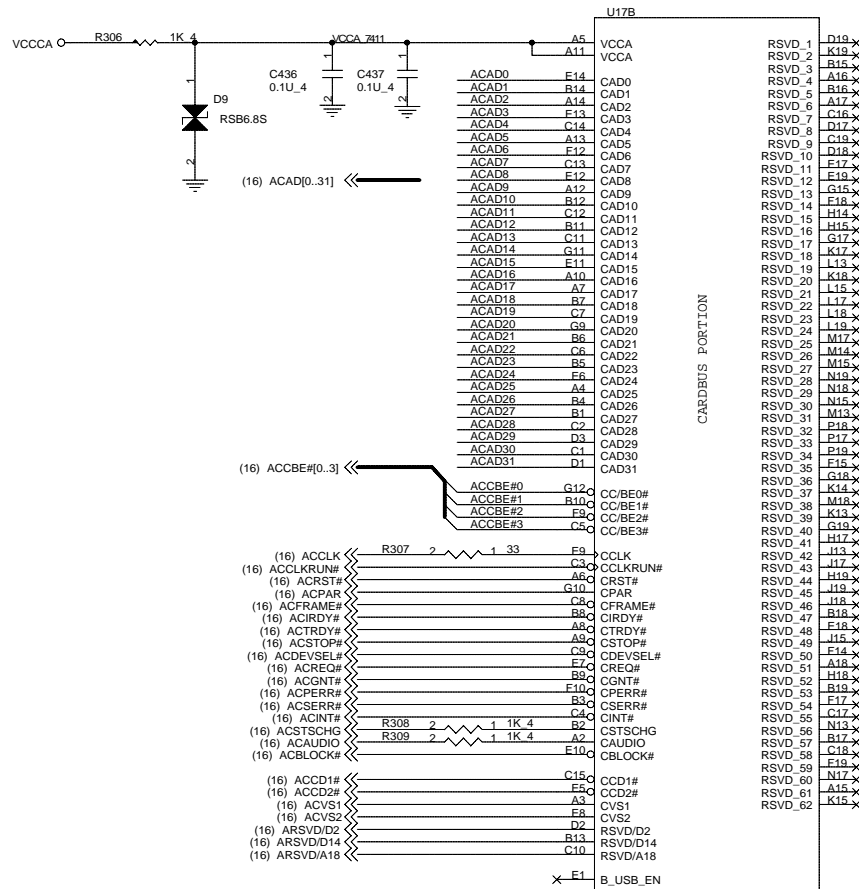
Title: **TI-7411 CardBus Control -- A**

Size: **RJ5 Main Board**

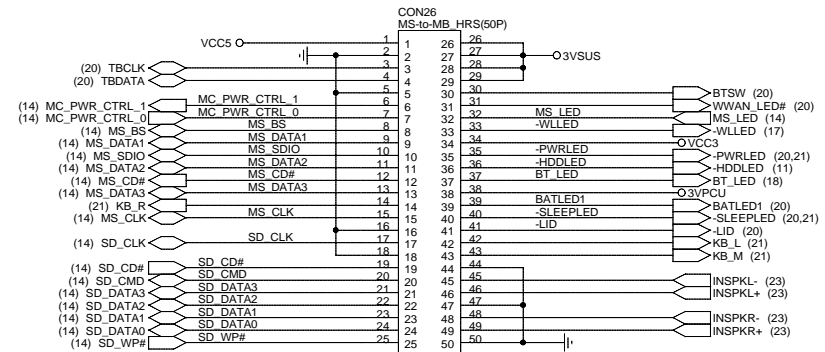
Date: Thursday, May 26, 2005

Sheet: 14 of 36

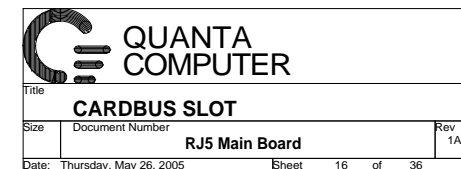
Rev: 1A



TI_7411



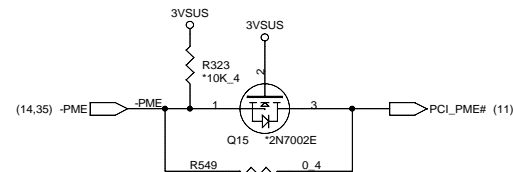
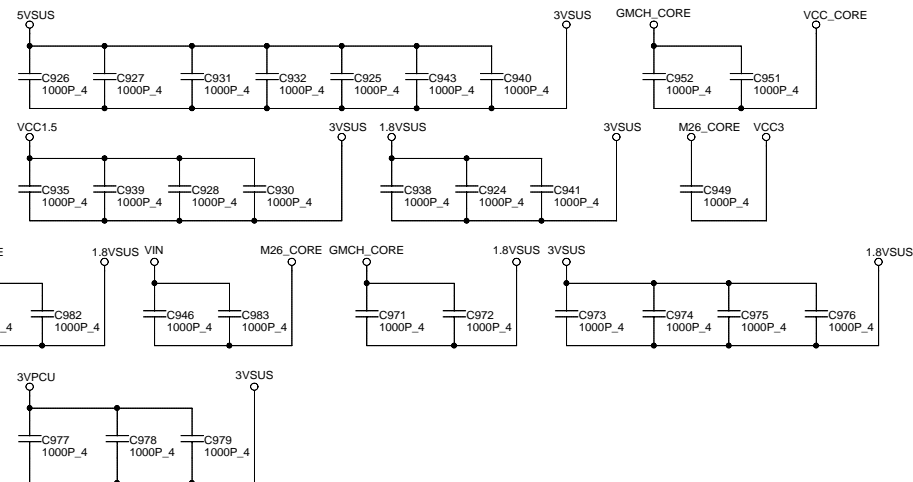
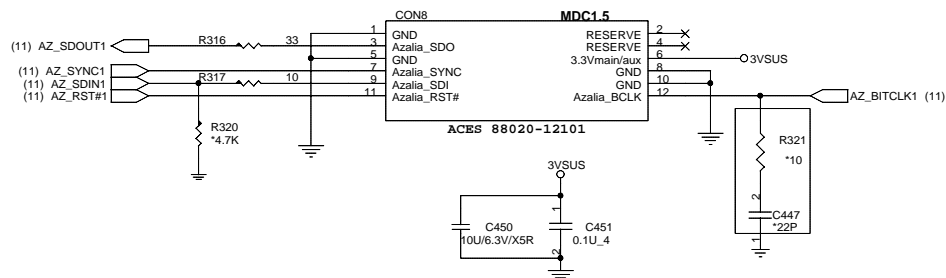
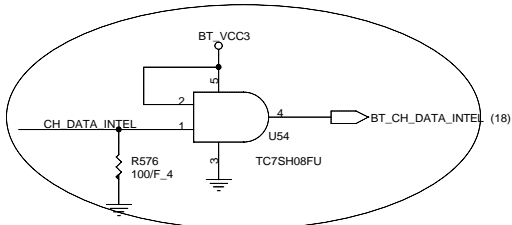
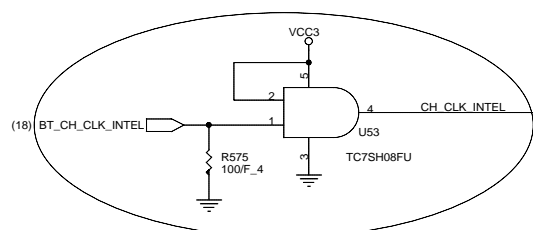
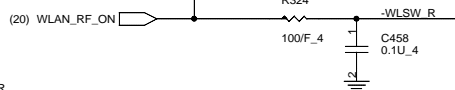
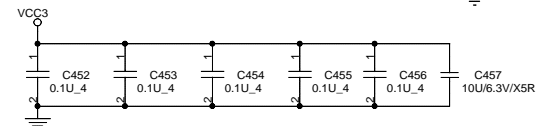
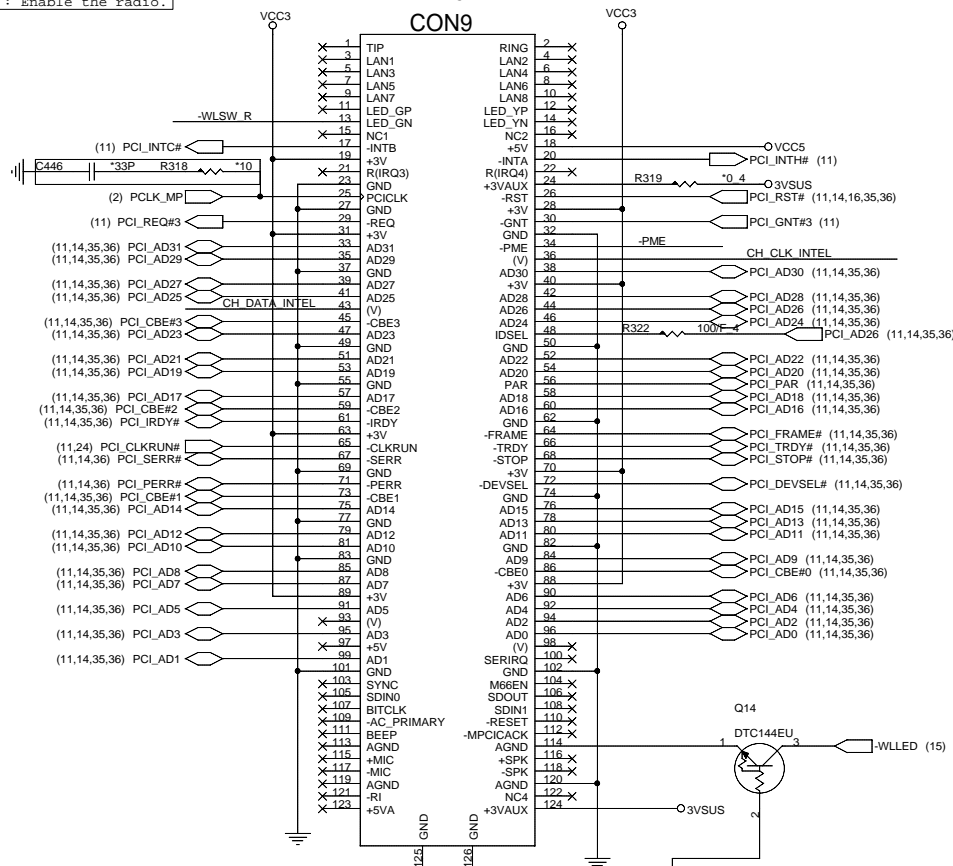
Hiros



Date: Thursday, May 26, 2005 Sheet 16 of 30

High : Enable the radio.

CONC

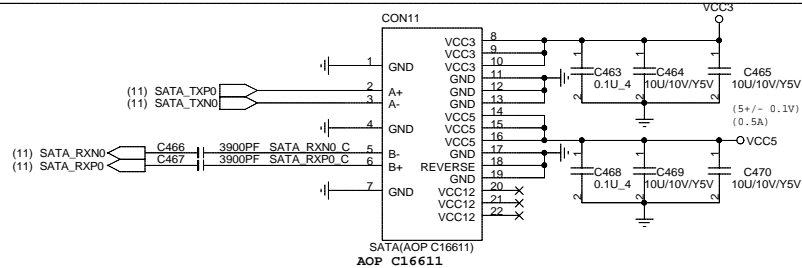
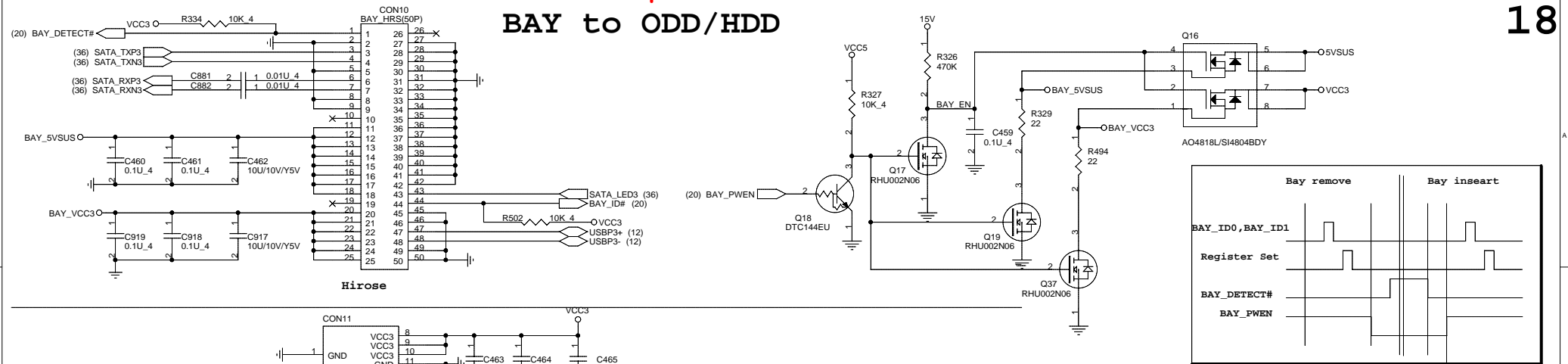


Title		MINIPCI /MDC	
Size	Document Number	RJ5 Main Board	
Date:	Thursday, May 12, 2005	Sheet	17 of 36

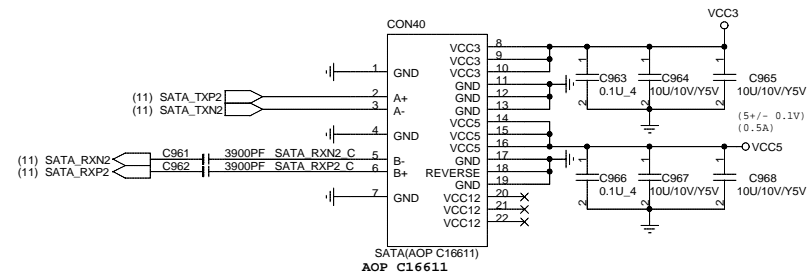
1.This part should not contain any substances which are specified in SS-00259-1

2.Purchase ink, paint, wire rods and molding resins only from the business partners that Sony approves as Green Partners.

BAY to ODD/HDD

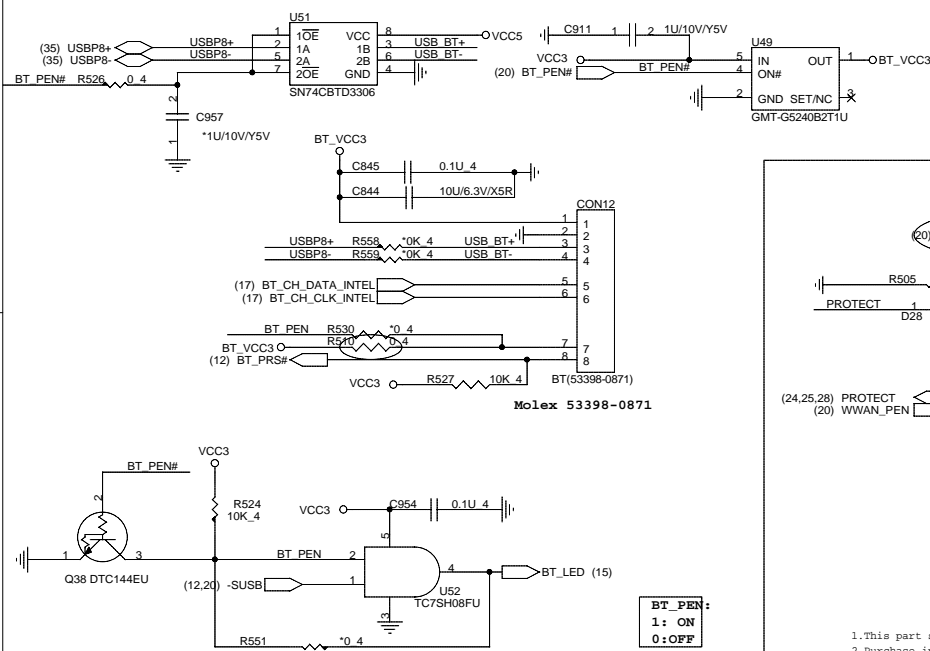


HDD CONNECTOR

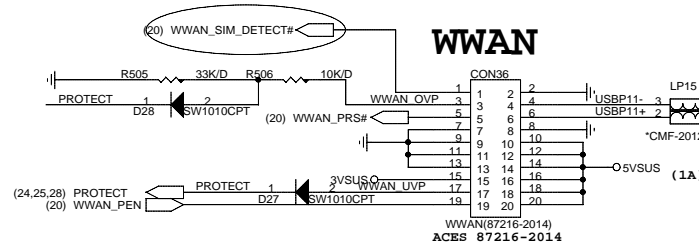


BAY_ID#	
0	SATA Device
1	USB Device

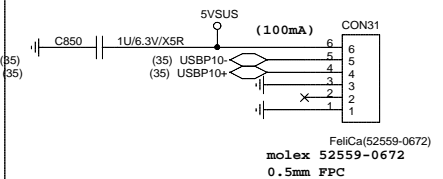
Bluetooth



WWAN



FeliCa



Felica: Molex 52689-0693



HDD/BAY/BT

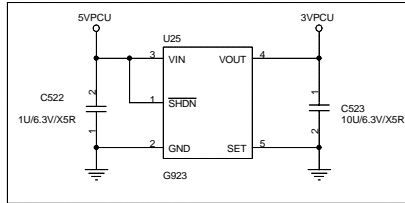
RJ5 Main Board

Date: Thursday, May 26, 2005 Sheet 18 of 36

Sheet 18 of 36

1A



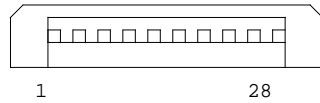


Pin 94 if no use, pin 94(DN) should connect to ground.
Pin 24 if no pull-high, will can't reboot.
Pin 103 internal is "A19", Can't use to GPIO
Pin 168 default is high
-DRQ0(pin 8) internal is no use

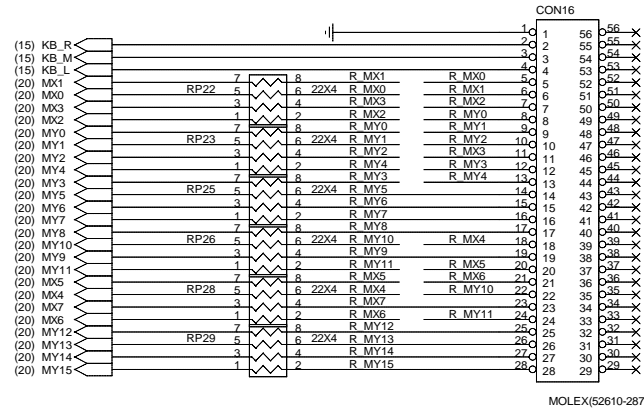


Title	PC87591 & FLASH
-------	-----------------

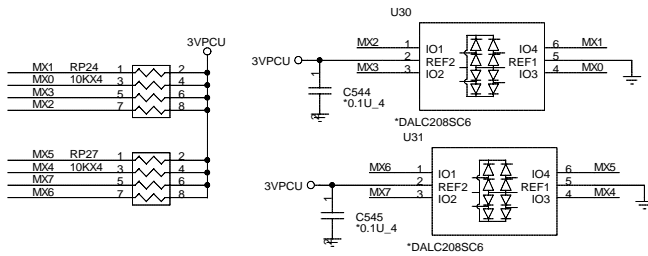
Size	Document Number		
	RJ5 Main Board		
Date:	Tuesday, May 10, 2005	Sheet	20 of 36



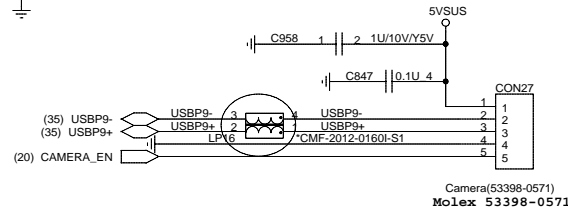
KEYBOARD



MOLEX(52610-2871)

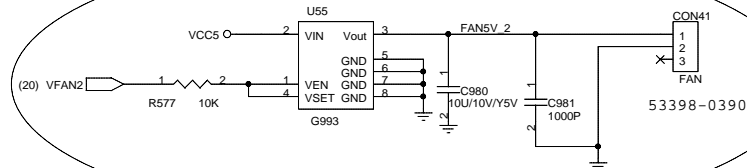


USB Camera



Camera(53398-0571)
Molex 53398-0571

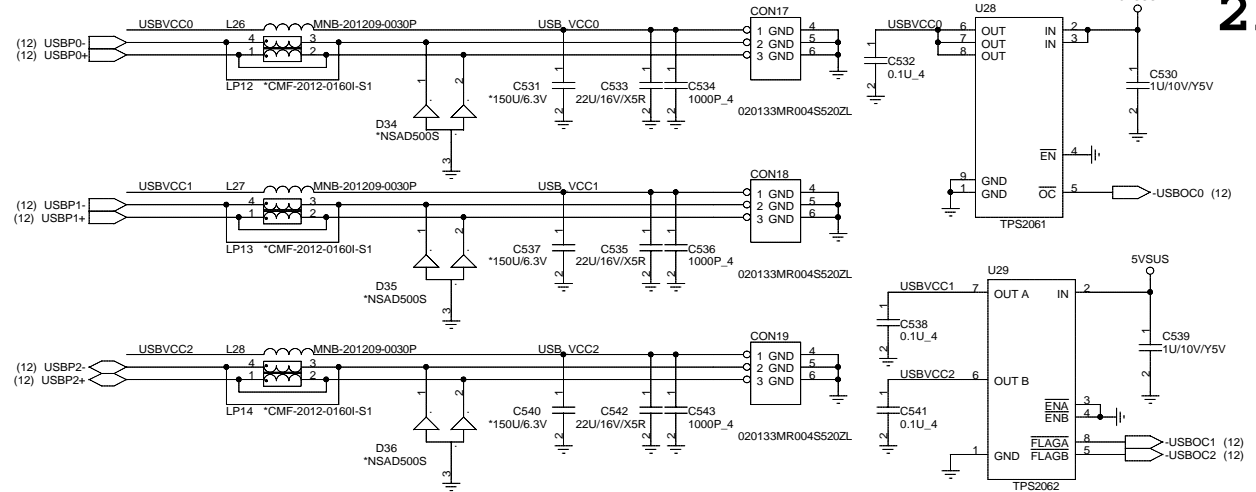
2nd FAN UNIT



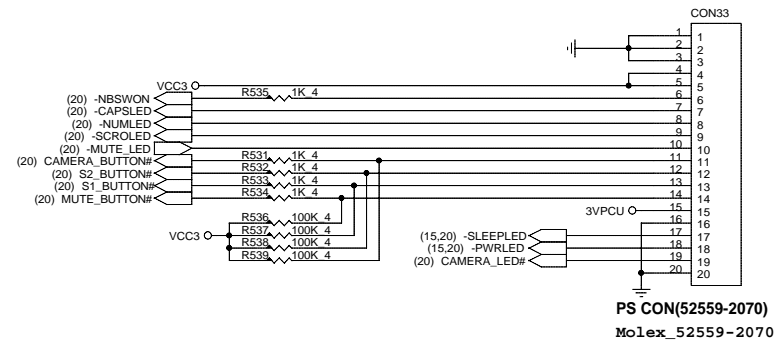
53398-0390

- 1.This part should not contain any substances which are specified in SS-00259-1
- 2.Purchase ink, paint, wire rods and molding resins only from the business partners that Sony approves as Green Partners.

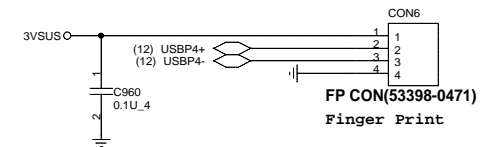
21



POWER SW BOARD



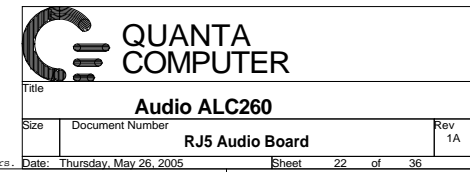
PS CON(52559-2070)
Molex_52559-2070



FP CON(53398-0471)
Finger Print



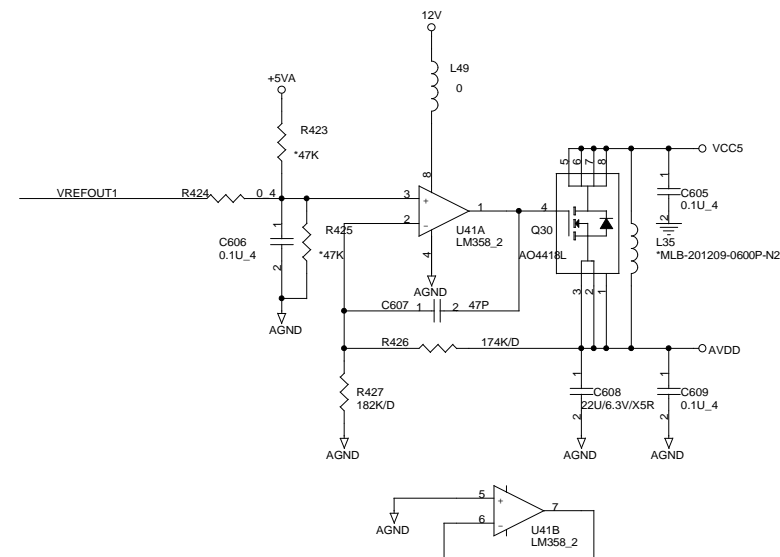
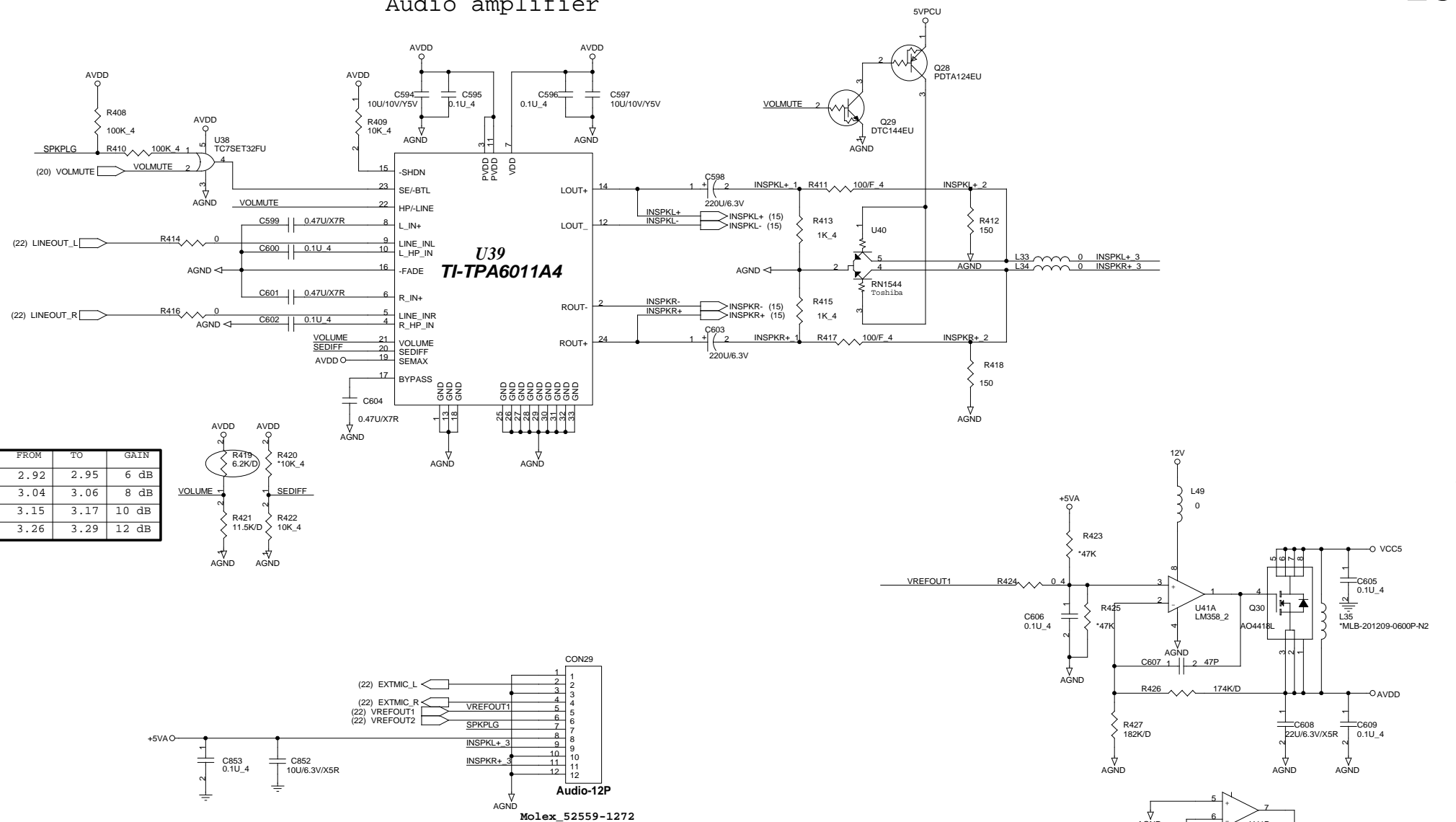
Title			K/B ,USB
Size	Document Number	Rev 1A	
RJ5 Main Board			
Date:	Tuesday, May 10, 2005	Sheet	21 of 36



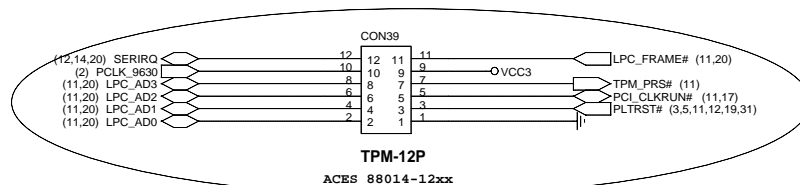
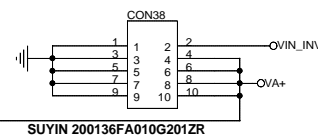
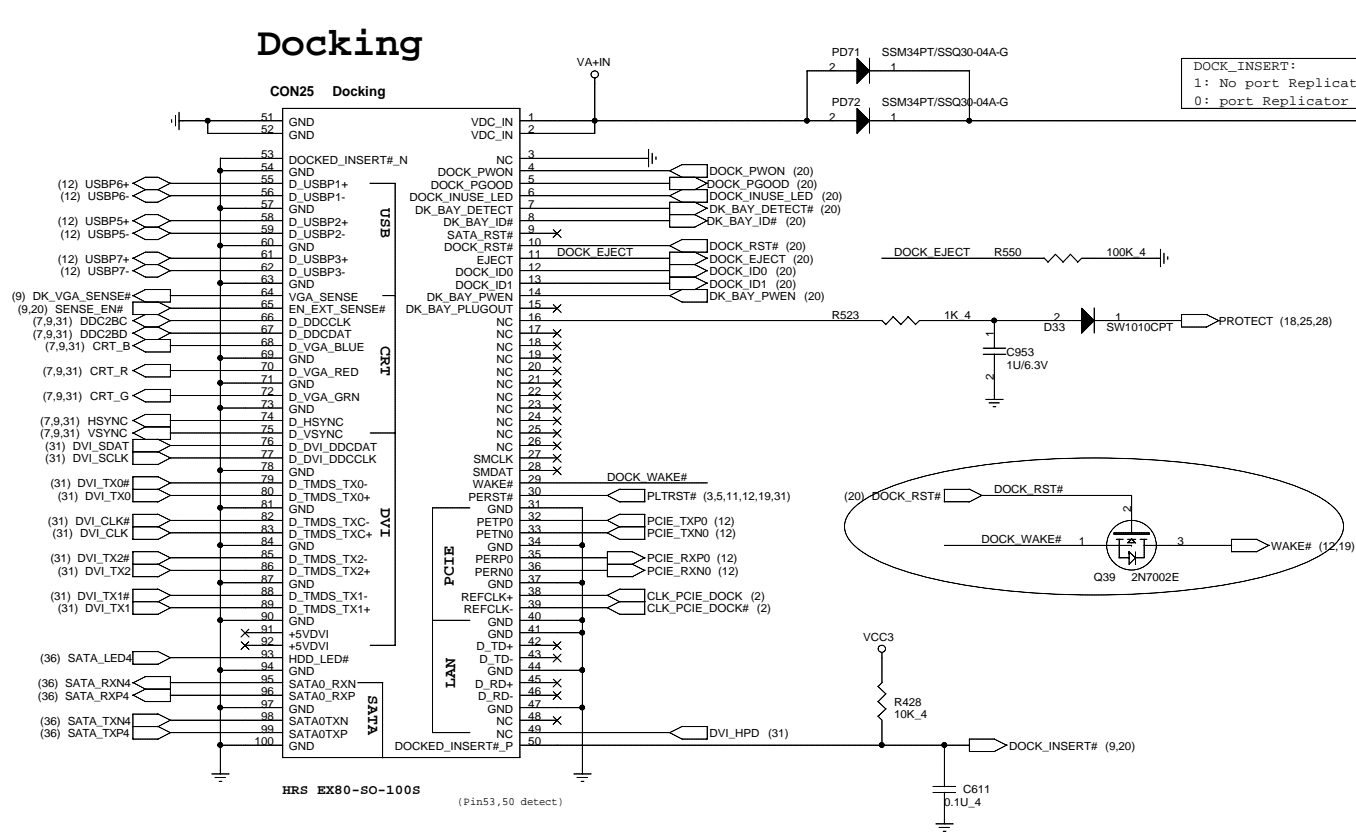
2. Purchase ink, paint, wire rods and molding resins only from the business partners that Sony approves as Green Partners.

Sheet 22 of 36

Audio amplifier



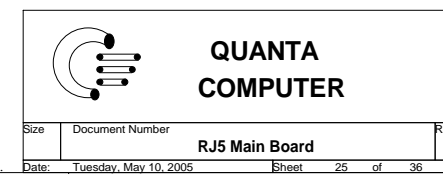
Docking

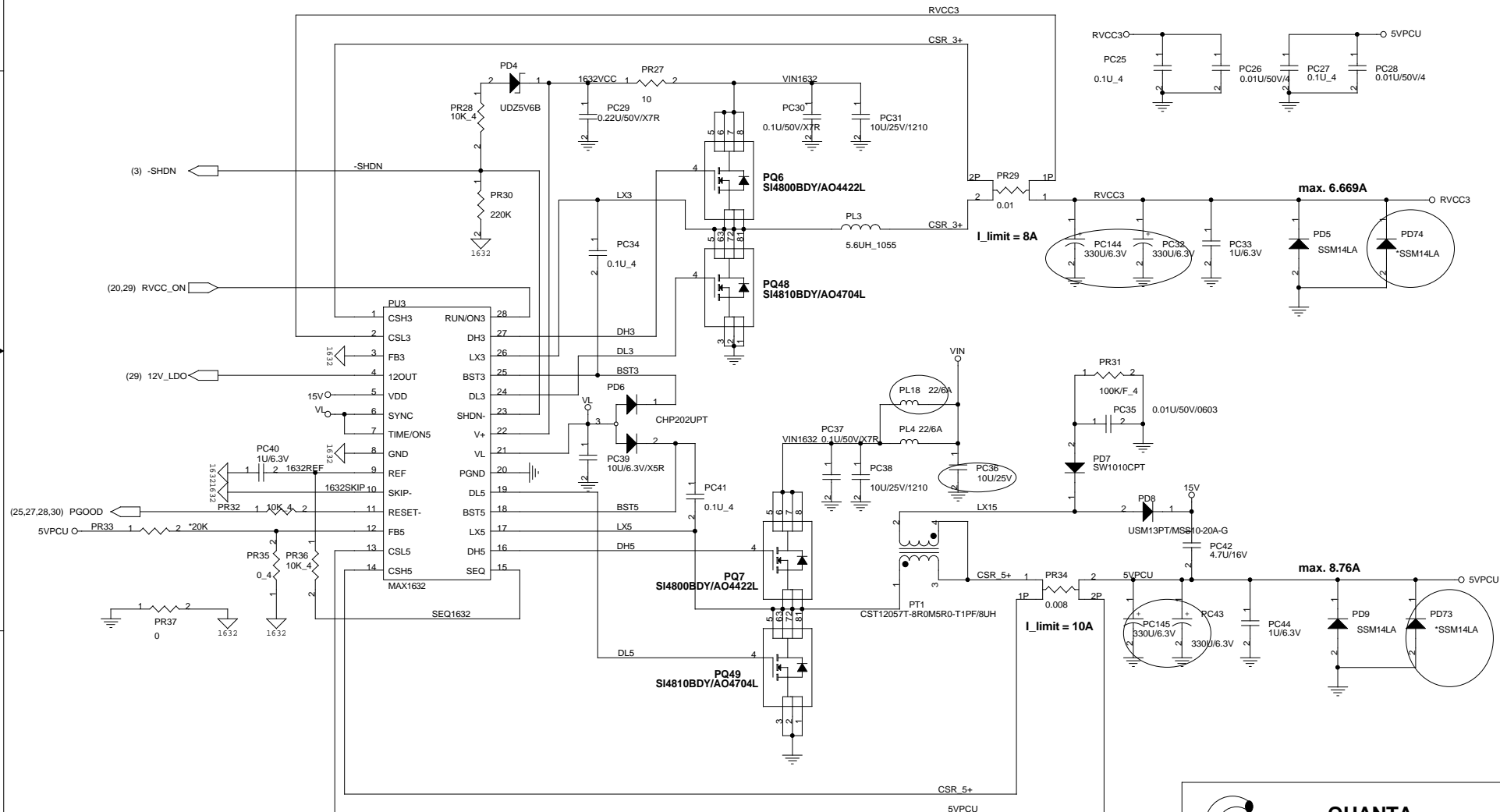


Title			Docking/TPM		
Size			Document Number		
Date			Tuesday, May 10, 2005		
Sheet			24 of 36		
Rev			1A		

1.This part should not contain any substances which are specified in SS-00259-1

2.Purchase ink, paint, wire rods and molding resins only from the business partners that Sony approves as Green Partners.

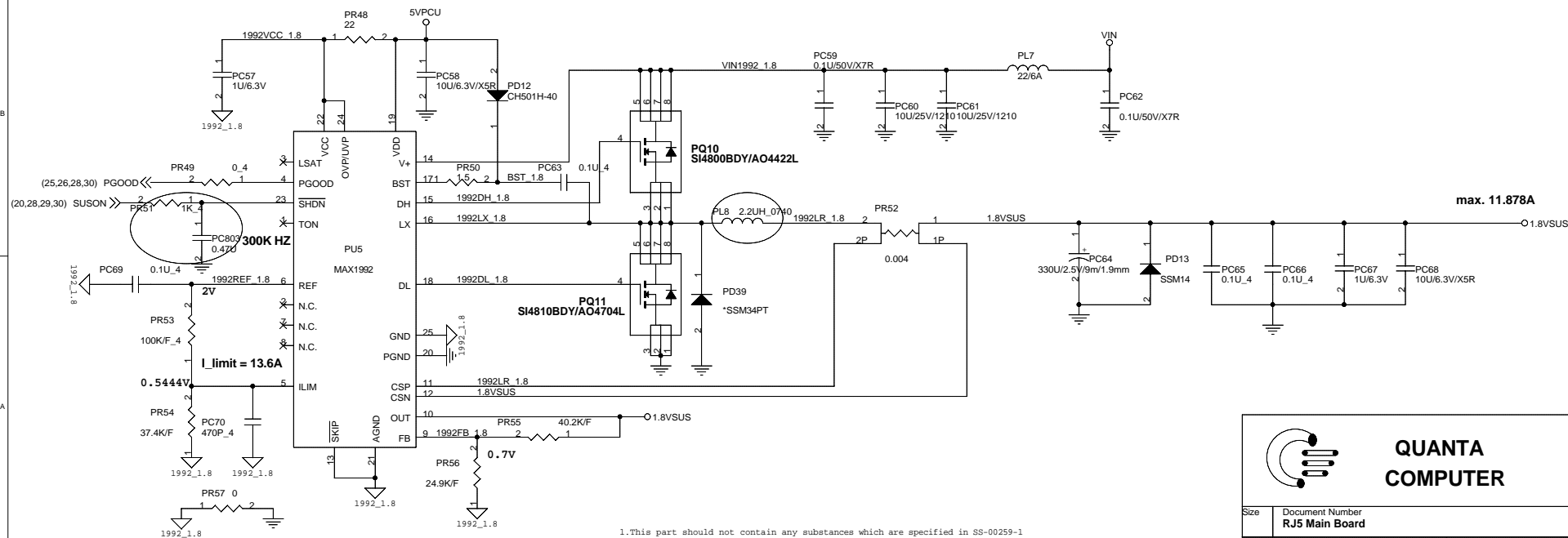
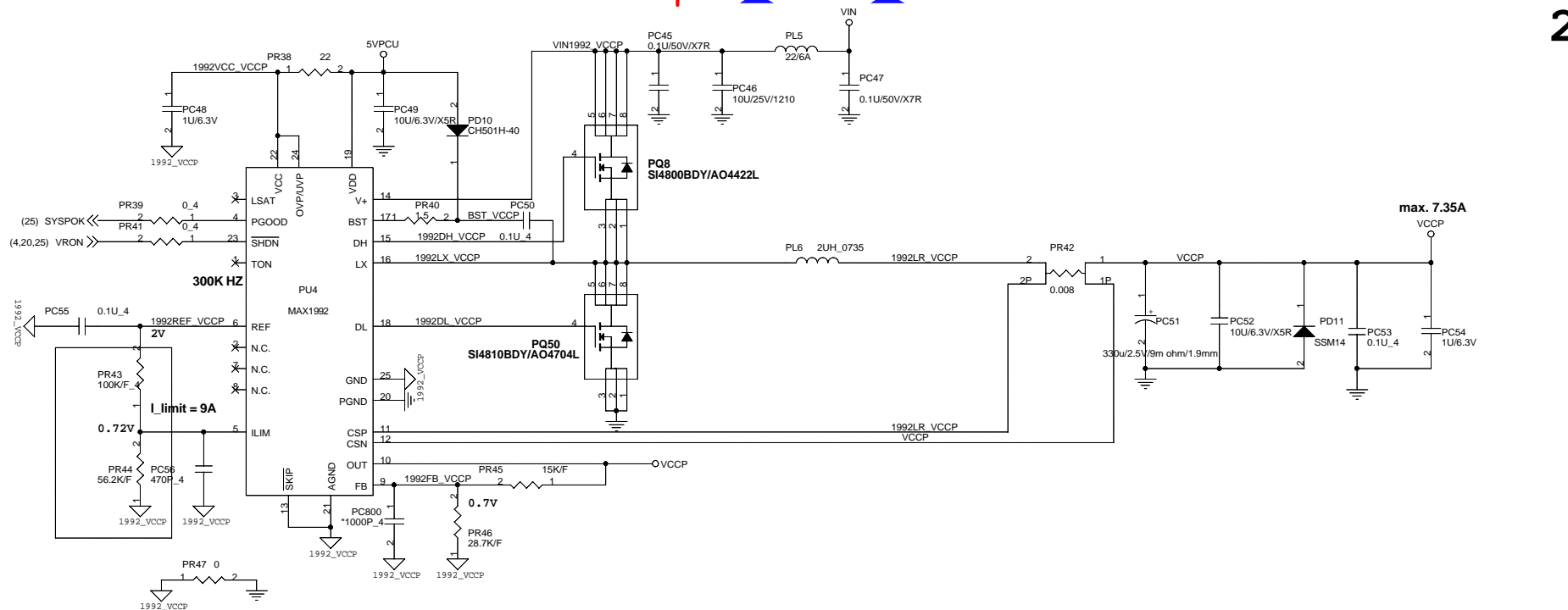





QUANTA COMPUTER

Size	Document Number	Rev
	RJ5 Main Board	1A
Date:	Tuesday, May 10, 2005	Sheet 26 of 36

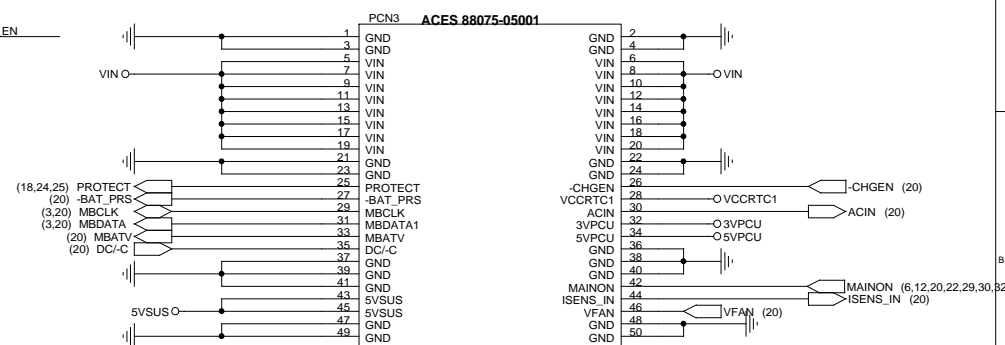
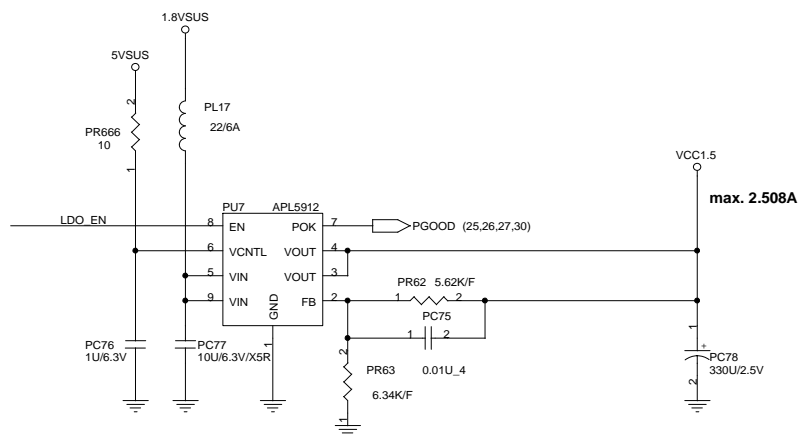
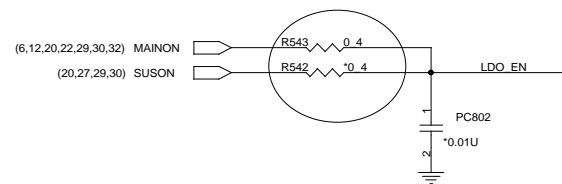
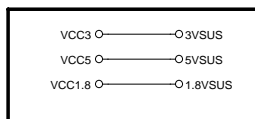
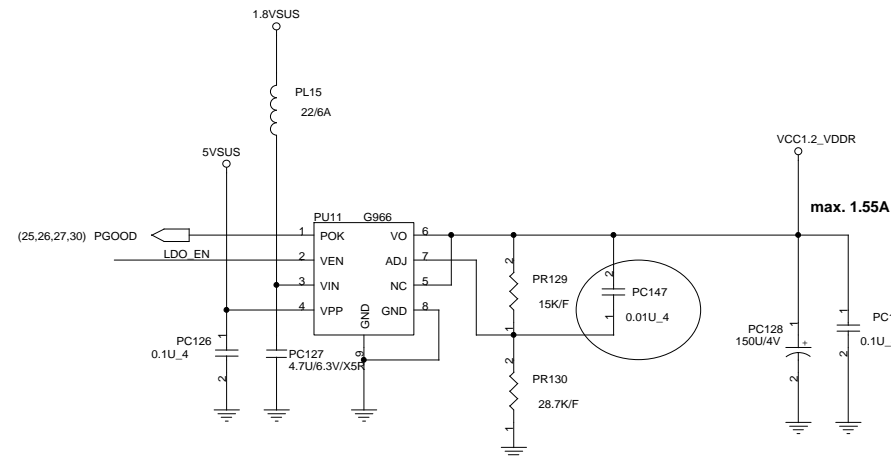
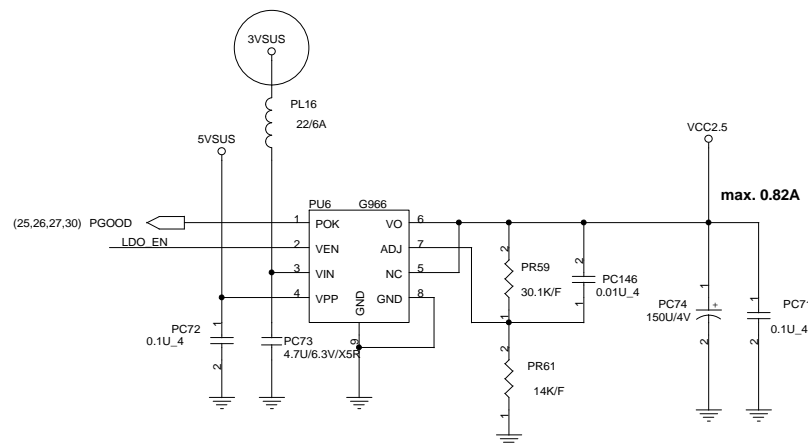
1. This part should not contain any substances which are specified in SS-00259-1
 2. Purchase ink, paint, wire rods and molding resins only from the business partners that Sony approves as Green Partners.






**QUANTA
COMPUTER**

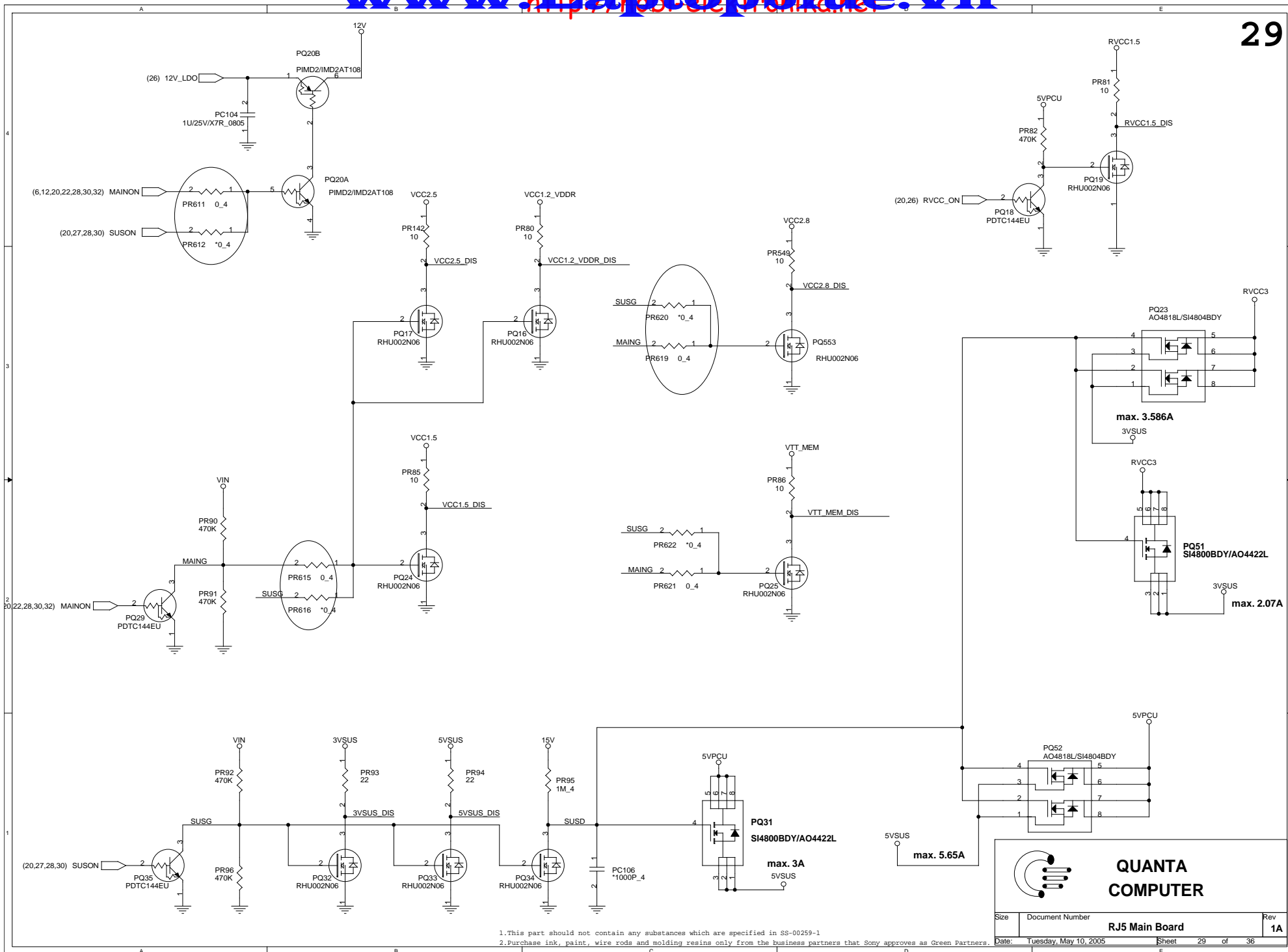
Size	Document Number RJS Main Board	Rev 1A
Date: Tuesday, May 10, 2005		Sheet 27 of 36





**QUANTA
COMPUTER**

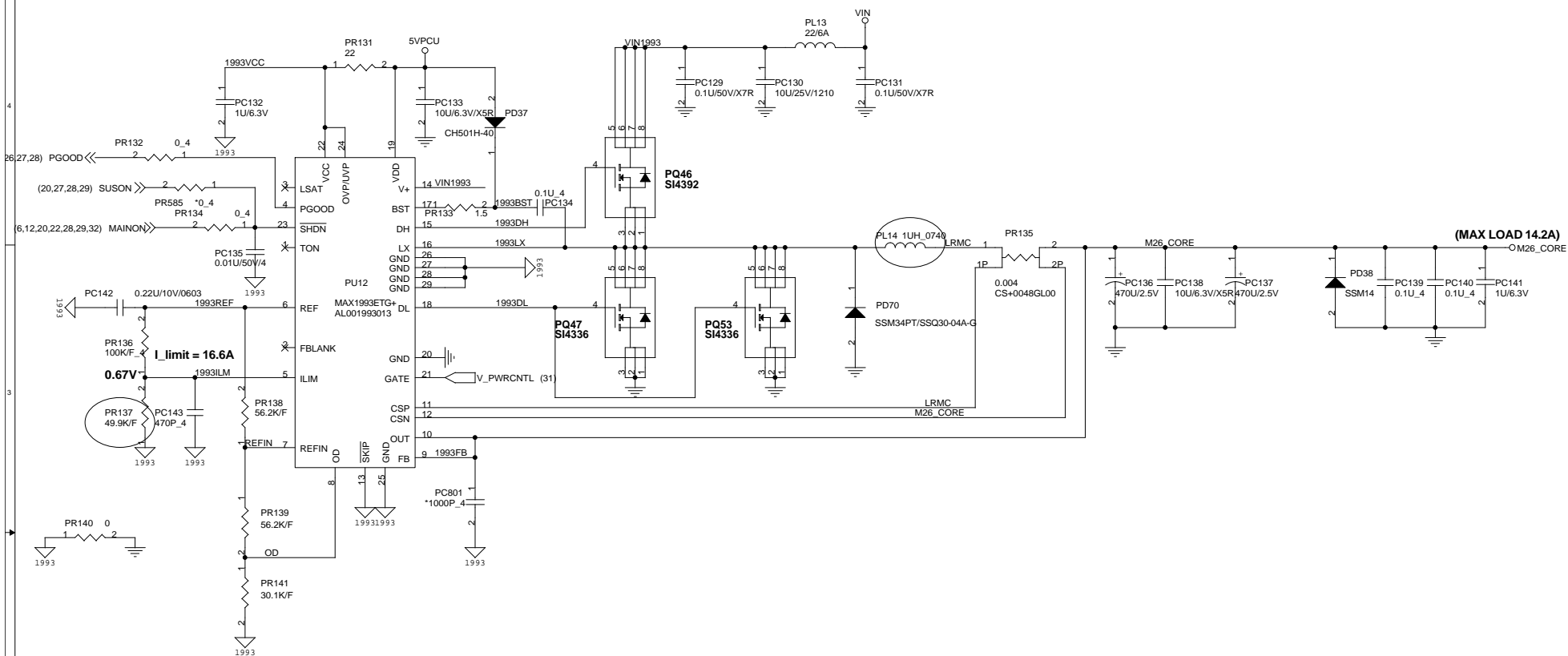
Size	Document Number	Rev
	RJ5 Main Board	1A
Date:	Tuesday, May 10, 2005	Sheet 28 of 36



1.This part should not contain any substances which are specified in SS-00259-1

2.Purchase ink, paint, wire rods and molding resins only from the business partners that Sony approves as Green Partners.

		QUANTA COMPUTER	
Size	Document Number	RJ5 Main Board	
Date:	Tuesday, May 10, 2005	Sheet	29 of 36
Rev	1A		



M24_CORE voltage setting:

	PR138 Value	PR139 Value	PR141 Value	V_PWRCNTL	
				Low	High
M24	49.9 K/F	49.9 K/F	27.4 K/F	1.215V	1V
	56.2 K/F	56.2 K/F	30.1 K/F	1.211V	1V



QUANTA
COMPUTER

Size	Document Number	Rev
	RJ5 (M26_CORE)	1A
Date:	Wednesday, May 18, 2005	Sheet 30 of 36

1.This part should not contain any substances which are specified in S8-00259-1.
2.Purchase ink, paint, wire rods and molding resins only from the business partners that Sony approves as Green Partners.

(7) GFX_TXP0 AH30
(7) GFX_TXN0 AG30
(7) GFX_TXP1 AF29
(7) GFX_TXN1 AE29
(7) GFX_TXP2 AE30
(7) GFX_TXN2 AD30
(7) GFX_TXP3 AD29
(7) GFX_TXN3 AC29
(7) GFX_TXP4 AC29
(7) GFX_TXN4 AB29
(7) GFX_TXP5 AB30
(7) GFX_TXN5 AA30
(7) GFX_TXP6 AA29
(7) GFX_TXN6 Y29
(7) GFX_TXP7 W29
(7) GFX_TXN7 W30
(7) GFX_TXP8 V29
(7) GFX_TXN8 V30
(7) GFX_TXP9 U29
(7) GFX_TXN9 U30
(7) GFX_TXP10 R30
(7) GFX_TXN10 R29
(7) GFX_TXP11 P29
(7) GFX_TXN11 N29
(7) GFX_TXP12 N30
(7) GFX_TXN12 M30
(7) GFX_TXP13 M29
(7) GFX_TXN13 L29
(7) GFX_TXP14 K29
(7) GFX_TXN14 K30
(7) GFX_TXP15 J29
(7) GFX_TXN15 J30

(7) GFX_RXP0 C2006
(7) GFX_RXN0 C2007
(7) GFX_RXP1 C2008
(7) GFX_RXN1 C2009
(7) GFX_RXP2 C2011
(7) GFX_RXN2 C2012
(7) GFX_RXP3 C2013
(7) GFX_RXN3 C2014
(7) GFX_RXP4 C2015
(7) GFX_RXN4 C2017
(7) GFX_RXP5 C2018
(7) GFX_RXN5 C2019
(7) GFX_RXP6 C2021
(7) GFX_RXN6 C2022
(7) GFX_RXP7 C2023
(7) GFX_RXN7 C2025
(7) GFX_RXP8 C2026
(7) GFX_RXN8 C2027
(7) GFX_RXP9 C2028
(7) GFX_RXN9 C2030
(7) GFX_RXP10 C2031
(7) GFX_RXN10 C2032
(7) GFX_RXP11 C2033
(7) GFX_RXN11 C2034
(7) GFX_RXP12 C2035
(7) GFX_RXN12 C2036
(7) GFX_RXP13 C2037
(7) GFX_RXN13 C2038
(7) GFX_RXP14 C2039
(7) GFX_RXN14 C2040
(7) GFX_RXP15 C2041
(7) GFX_RXN15 C2042

(2) CLK_PCIE_M24 AF27
(2) CLK_PCIE_M24# AE27

VCC1.2_VDDR R2024 150/F AC23
R2026 100/F 4 AB24
R2028 10K/F 4 AB23
VCC3 R2079 10K R2031 10K 4 PCIE_TEST AF25

M26 PLTRST# AD25
R2035 1K/F 4 AD24
R2038 715/F AH21

AK21 Y_G
AK22 C_R_PR
AK22 COMP_B_PB

R2044 75/F 4 R2045 75/F 4 R2046 75/F 4
T2031 AJ24
T2032 AK24
M22_CLK3 AG22
M22_DATA3 AG23

R2080 1K 4 AJ23
T2034 AH24

(2) M26_27MHZ R2047 0 4 CLK_M24_XIN AH28
CLK_M24_OUT AJ29

R2050 1K 4 AH27
E8
B6
T2035 AF25

R2052 10K 4 AH25

GPIO0 AJ5
GPIO1 AH5
GPIO2 AJ4
GPIO3 AK4
GPIO4 AH4
GPIO5 AF4
GPIO6 AK3
GPIO7 AH3
GPIO8 AJ2
GPIO9 AH2
GPIO10 AH1
GPIO11 AG3
GPIO12 AG1
GPIO13 AG1
GPIO14 AG2
GPIO15 AF2

V_PWRCNTL(output)
H=Lower core voltage(1.0V)
L=Higher core voltage(1.15V)

GPIO_PWRCNTL M26_27MHZ (2)
GPIO_MEMSSIN

DVOMODE DVPPDATA_0 DVPPDATA_1 DVPPDATA_2 DVPPDATA_3 DVPPDATA_4 DVPPDATA_5 DVPPDATA_6 DVPPDATA_7 DVPPDATA_8 DVPPDATA_9 DVPPDATA_10 DVPPDATA_11 DVPPDATA_12 DVPPDATA_13 DVPPDATA_14 DVPPDATA_15 DVPPDATA_16 DVPPDATA_17 DVPPDATA_18 DVPPDATA_19 DVPPDATA_20 DVPPDATA_21 DVPPDATA_22 DVPPDATA_23

AE10 T2007 T2008 T2009 T2010 T2011 T2012 T2013 T2014 T2015 T2016 T2017 T2018 T2019 T2020 T2021 T2022 T2023 T2024

AE10 T2007 T2008 T2009 T2010 T2011 T2012 T2013 T2014 T2015 T2016 T2017 T2018 T2019 T2020 T2021 T2022 T2023 T2024

AE10 T2007 T2008 T2009 T2010 T2011 T2012 T2013 T2014 T2015 T2016 T2017 T2018 T2019 T2020 T2021 T2022 T2023 T2024

AE10 T2007 T2008 T2009 T2010 T2011 T2012 T2013 T2014 T2015 T2016 T2017 T2018 T2019 T2020 T2021 T2022 T2023 T2024

AE10 T2007 T2008 T2009 T2010 T2011 T2012 T2013 T2014 T2015 T2016 T2017 T2018 T2019 T2020 T2021 T2022 T2023 T2024

AE10 T2007 T2008 T2009 T2010 T2011 T2012 T2013 T2014 T2015 T2016 T2017 T2018 T2019 T2020 T2021 T2022 T2023 T2024

AE10 T2007 T2008 T2009 T2010 T2011 T2012 T2013 T2014 T2015 T2016 T2017 T2018 T2019 T2020 T2021 T2022 T2023 T2024

AE10 T2007 T2008 T2009 T2010 T2011 T2012 T2013 T2014 T2015 T2016 T2017 T2018 T2019 T2020 T2021 T2022 T2023 T2024

AE10 T2007 T2008 T2009 T2010 T2011 T2012 T2013 T2014 T2015 T2016 T2017 T2018 T2019 T2020 T2021 T2022 T2023 T2024

AE10 T2007 T2008 T2009 T2010 T2011 T2012 T2013 T2014 T2015 T2016 T2017 T2018 T2019 T2020 T2021 T2022 T2023 T2024

AE10 T2007 T2008 T2009 T2010 T2011 T2012 T2013 T2014 T2015 T2016 T2017 T2018 T2019 T2020 T2021 T2022 T2023 T2024

AE10 T2007 T2008 T2009 T2010 T2011 T2012 T2013 T2014 T2015 T2016 T2017 T2018 T2019 T2020 T2021 T2022 T2023 T2024

AE10 T2007 T2008 T2009 T2010 T2011 T2012 T2013 T2014 T2015 T2016 T2017 T2018 T2019 T2020 T2021 T2022 T2023 T2024

AE10 T2007 T2008 T2009 T2010 T2011 T2012 T2013 T2014 T2015 T2016 T2017 T2018 T2019 T2020 T2021 T2022 T2023 T2024

AE10 T2007 T2008 T2009 T2010 T2011 T2012 T2013 T2014 T2015 T2016 T2017 T2018 T2019 T2020 T2021 T2022 T2023 T2024

AE10 T2007 T2008 T2009 T2010 T2011 T2012 T2013 T2014 T2015 T2016 T2017 T2018 T2019 T2020 T2021 T2022 T2023 T2024

AE10 T2007 T2008 T2009 T2010 T2011 T2012 T2013 T2014 T2015 T2016 T2017 T2018 T2019 T2020 T2021 T2022 T2023 T2024

AE10 T2007 T2008 T2009 T2010 T2011 T2012 T2013 T2014 T2015 T2016 T2017 T2018 T2019 T2020 T2021 T2022 T2023 T2024

AE10 T2007 T2008 T2009 T2010 T2011 T2012 T2013 T2014 T2015 T2016 T2017 T2018 T2019 T2020 T2021 T2022 T2023 T2024

AE10 T2007 T2008 T2009 T2010 T2011 T2012 T2013 T2014 T2015 T2016 T2017 T2018 T2019 T2020 T2021 T2022 T2023 T2024

AE10 T2007 T2008 T2009 T2010 T2011 T2012 T2013 T2014 T2015 T2016 T2017 T2018 T2019 T2020 T2021 T2022 T2023 T2024

AE10 T2007 T2008 T2009 T2010 T2011 T2012 T2013 T2014 T2015 T2016 T2017 T2018 T2019 T2020 T2021 T2022 T2023 T2024

AE10 T2007 T2008 T2009 T2010 T2011 T2012 T2013 T2014 T2015 T2016 T2017 T2018 T2019 T2020 T2021 T2022 T2023 T2024

AE10 T2007 T2008 T2009 T2010 T2011 T2012 T2013 T2014 T2015 T2016 T2017 T2018 T2019 T2020 T2021 T2022 T2023 T2024

AE10 T2007 T2008 T2009 T2010 T2011 T2012 T2013 T2014 T2015 T2016 T2017 T2018 T2019 T2020 T2021 T2022 T2023 T2024

AE10 T2007 T2008 T2009 T2010 T2011 T2012 T2013 T2014 T2015 T2016 T2017 T2018 T2019 T2020 T2021 T2022 T2023 T2024

AE10 T2007 T2008 T2009 T2010 T2011 T2012 T2013 T2014 T2015 T2016 T2017 T2018 T2019 T2020 T2021 T2022 T2023 T2024

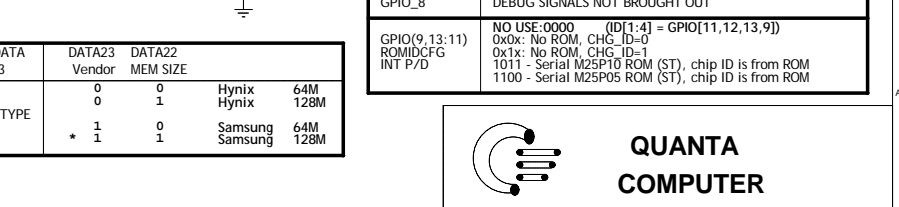
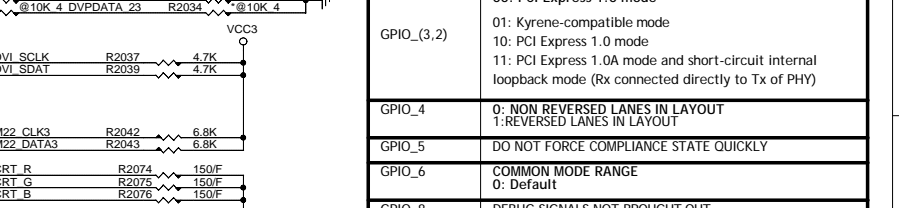
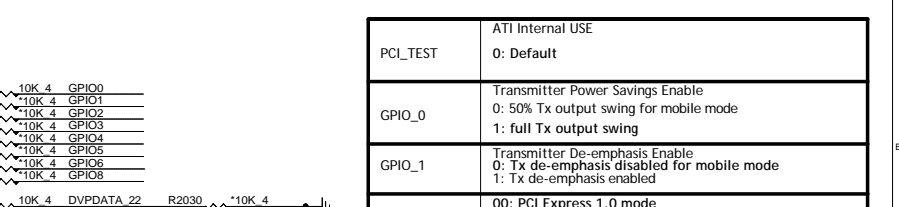
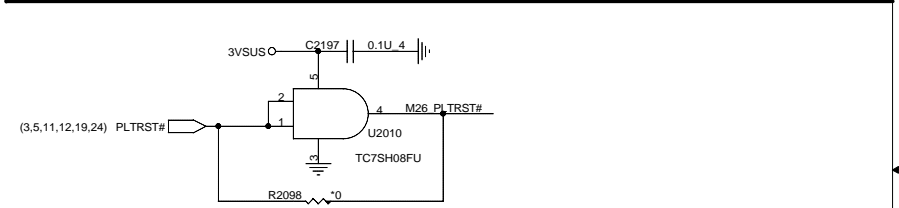
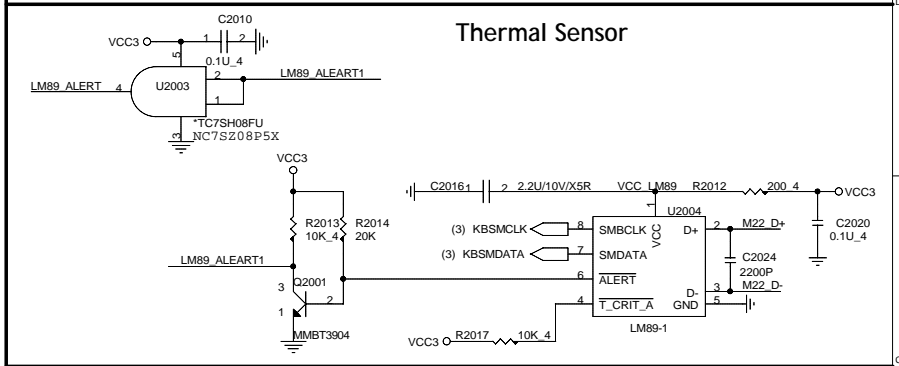
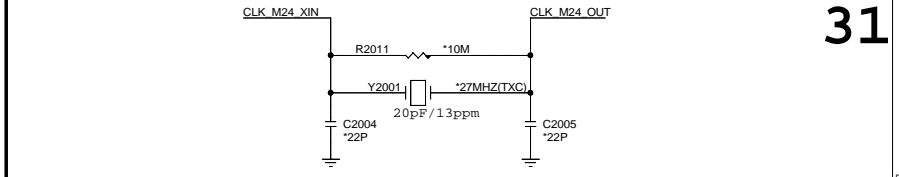
AE10 T2007 T2008 T2009 T2010 T2011 T2012 T2013 T2014 T2015 T2016 T2017 T2018 T2019 T2020 T2021 T2022 T2023 T2024

AE10 T2007 T2008 T2009 T2010 T2011 T2012 T2013 T2014 T2015 T2016 T2017 T2018 T2019 T2020 T2021 T2022 T2023 T2024

AE10 T2007 T2008 T2009 T2010 T2011 T2012 T2013 T2014 T2015 T2016 T2017 T2018 T2019 T2020 T2021 T2022 T2023 T2024

AE10 T2007 T2008 T2009 T2010 T2011 T2012 T2013 T2014 T2015 T2016 T2017 T2018 T2019 T2020 T2021 T2022 T2023 T2024

AE10 T2007 T2008 T2009 T2010 T2011 T2012 T2013 T2014 T2015 T2016 T2017 T2018 T2019 T2020 T2021 T2022 T2023 T2024



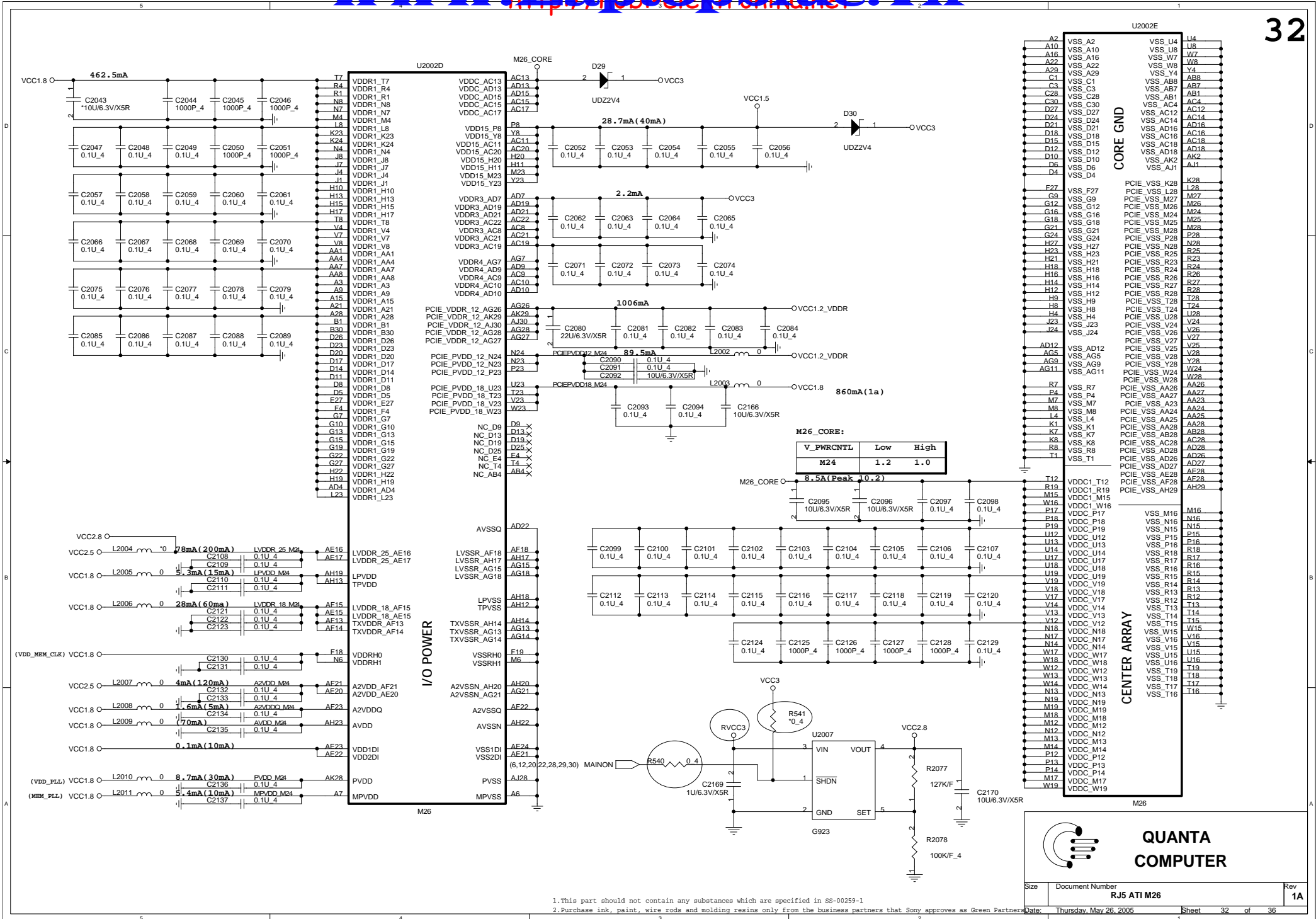
PCI_TEST	ATI Internal USE 0: Default
GPIO_0	Transmitter Power Savings Enable 0: 50% Tx output swing for mobile mode 1: full Tx output swing
GPIO_1	Transmitter De-emphasis Enable 0: Tx de-emphasis disabled for mobile mode 1: Tx de-emphasis enabled
GPIO_(3,2)	00: PCI Express 1.0 mode 01: Kyrene-compatible mode 10: PCI Express 1.0 mode 11: PCI Express 1.0A mode and short-circuit internal loopback mode (Rx connected directly to Tx of PHY)
GPIO_4	0: NON REVERSED LANES IN LAYOUT 1: REVERSED LANES IN LAYOUT
GPIO_5	DO NOT FORCE COMPLIANCE STATE QUICKLY
GPIO_6	COMMON MODE RANGE 0: Default
GPIO_8	DEBUG SIGNALS NOT BROUGHT OUT
GPIO(9,13;11)	NO USE:0000 (ID[1:4] = GPIO[11,12,13,9]) 0x0x: No ROM, CHG_ID=0 0x1x: No ROM, CHG_ID=1 1011 - Serial M25P10 ROM (ST), chip ID is from ROM 1100 - Serial M25P05 ROM (ST), chip ID is from ROM

QUANTA COMPUTER

Size Document Number Rev 1A

RJ5 ATI M26

Date: Tuesday, May 10, 2005 Sheet 31 of 36



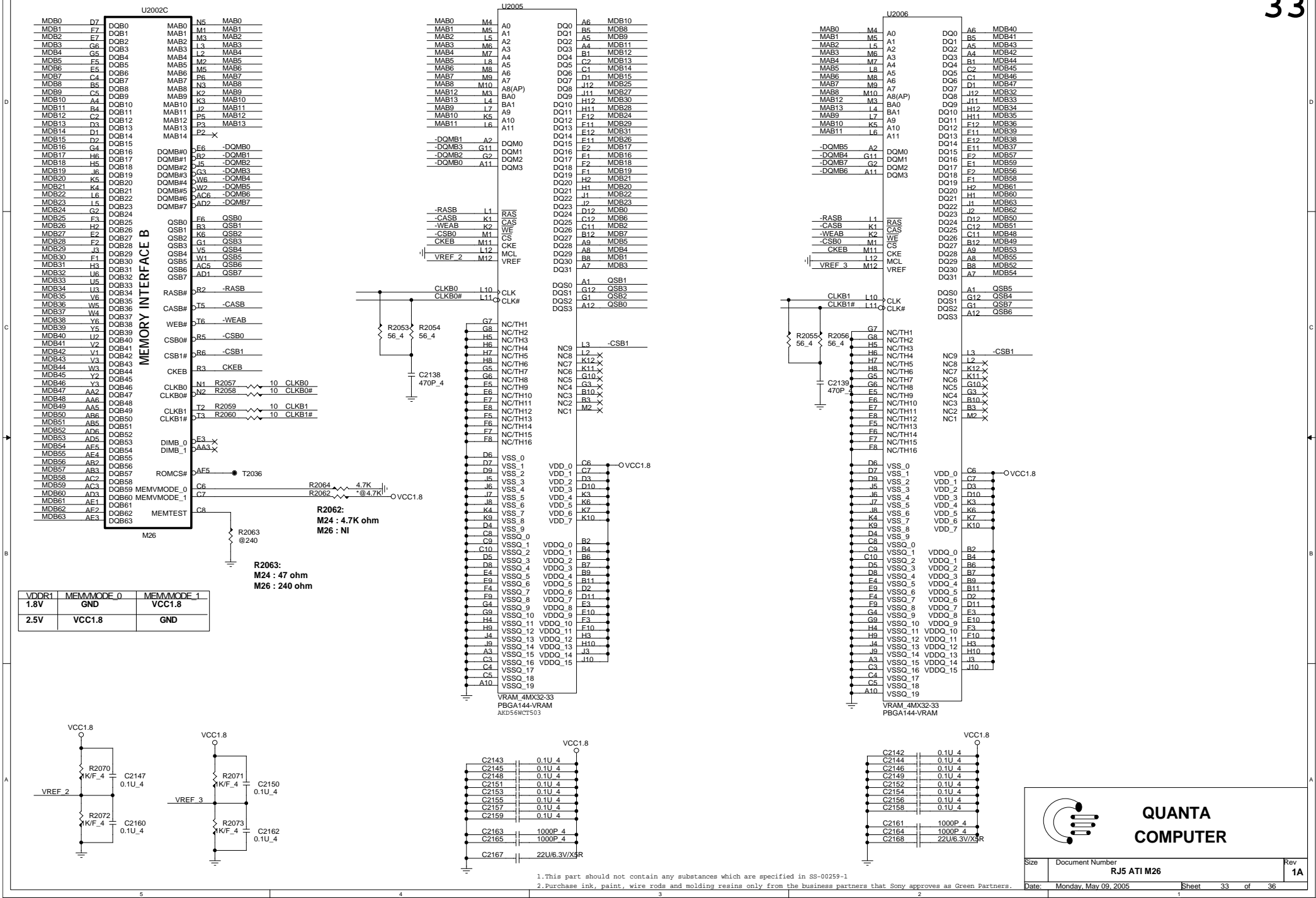
QUANTA COMPUTER

Size Document Number Rev

RJ5 ATI M26

Date: Thursday, May 26, 2005 Sheet 32 of 36

1. This part should not contain any substances which are specified in SS-00259-1
 2. Purchase ink, paint, wire rods and molding resins only from the business partners that Sony approves as Green Partners



QUANTA COMPUTER

Size Document Number Rev 1A

RJ5 ATI M26

Date: Monday, May 09, 2005 Sheet 33 of 36

1. This part should not contain any substances which are specified in SS-00259-1
 2. Purchase ink, paint, wire rods and molding resins only from the business partners that Sony approves as Green Partners.

U2002B



MEMORY INTERFACE A

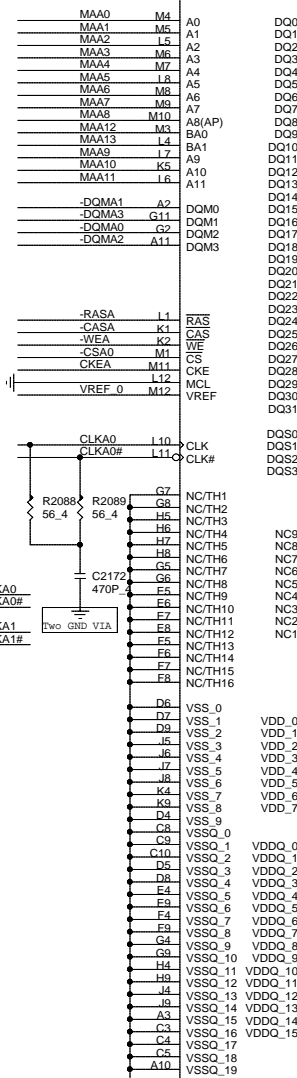
MVREFD

MVREFS

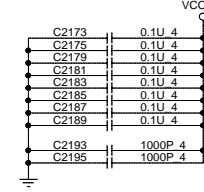
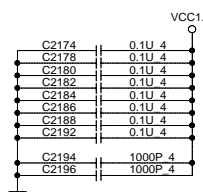
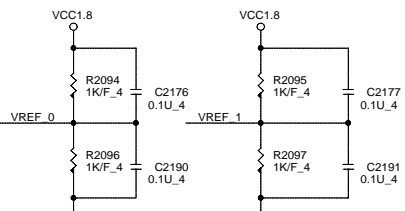
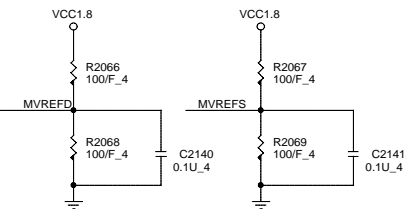
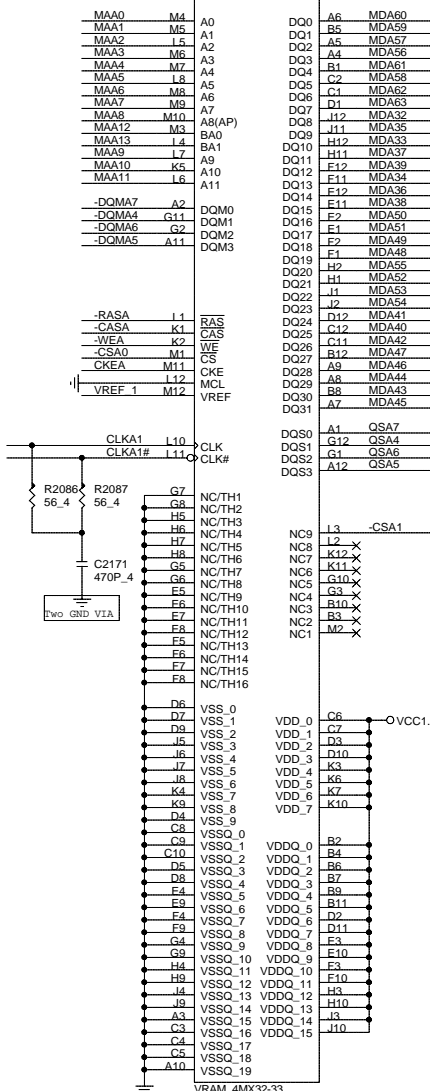
DIMA_0

DIMA_1

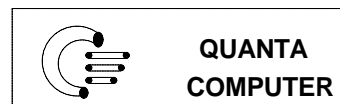
U2009

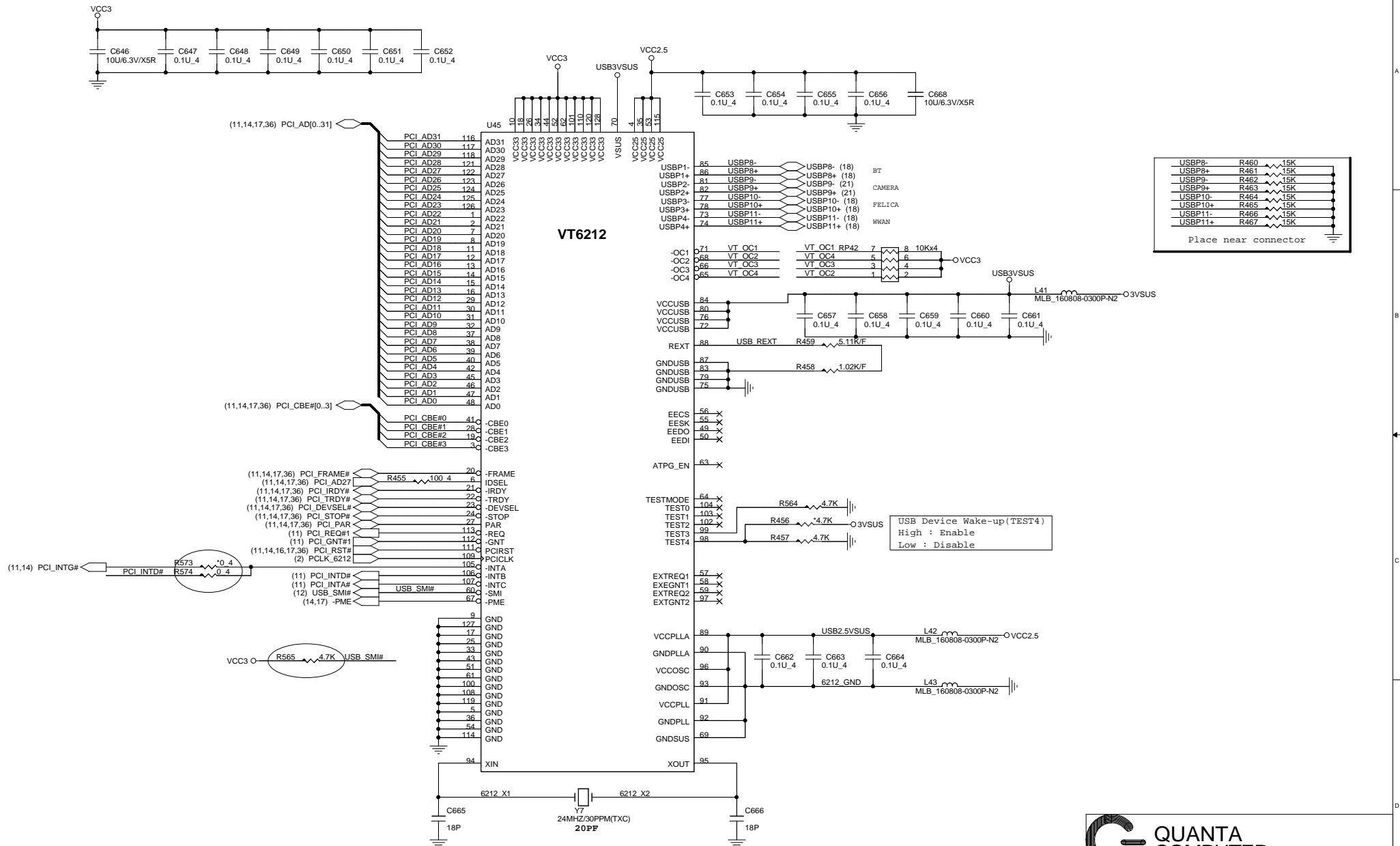


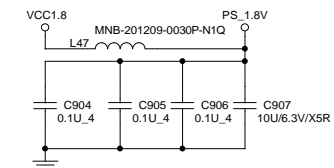
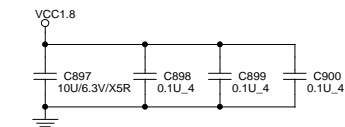
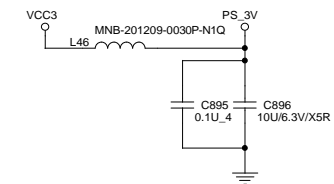
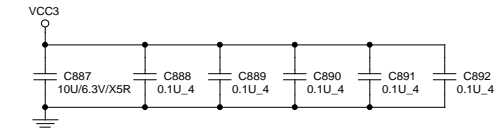
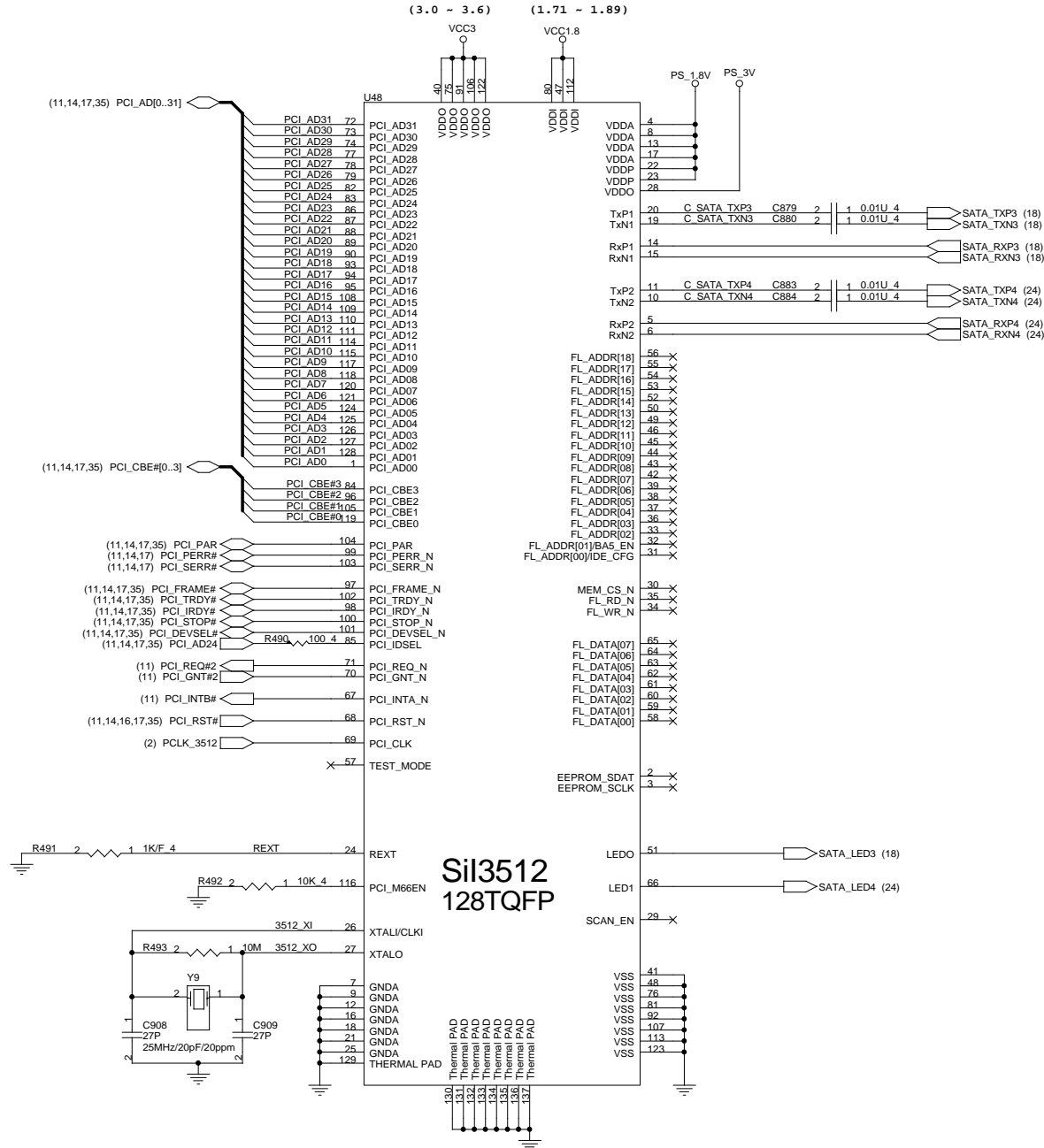
U2008



1.This part should not contain any substances which are specified in SS-00259-1
2.Purchase ink, paint, wire rods and molding resins only from the business partners that Sony approves as G&E Partners.







QUANTA COMPUTER

Title: **PCI-SATA Si3512**

Size: Custom Document Number: **RJ5 Main Board** Rev: 1A

Date: Thursday, May 26, 2005 Sheet: 36 of 36

1. This part should not contain any substances which are specified in SS-00259-1
2. Purchase ink, paint, wire rods and soldering resins only from the business partners that Sony approves as Green Partners.