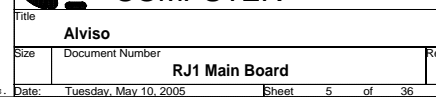
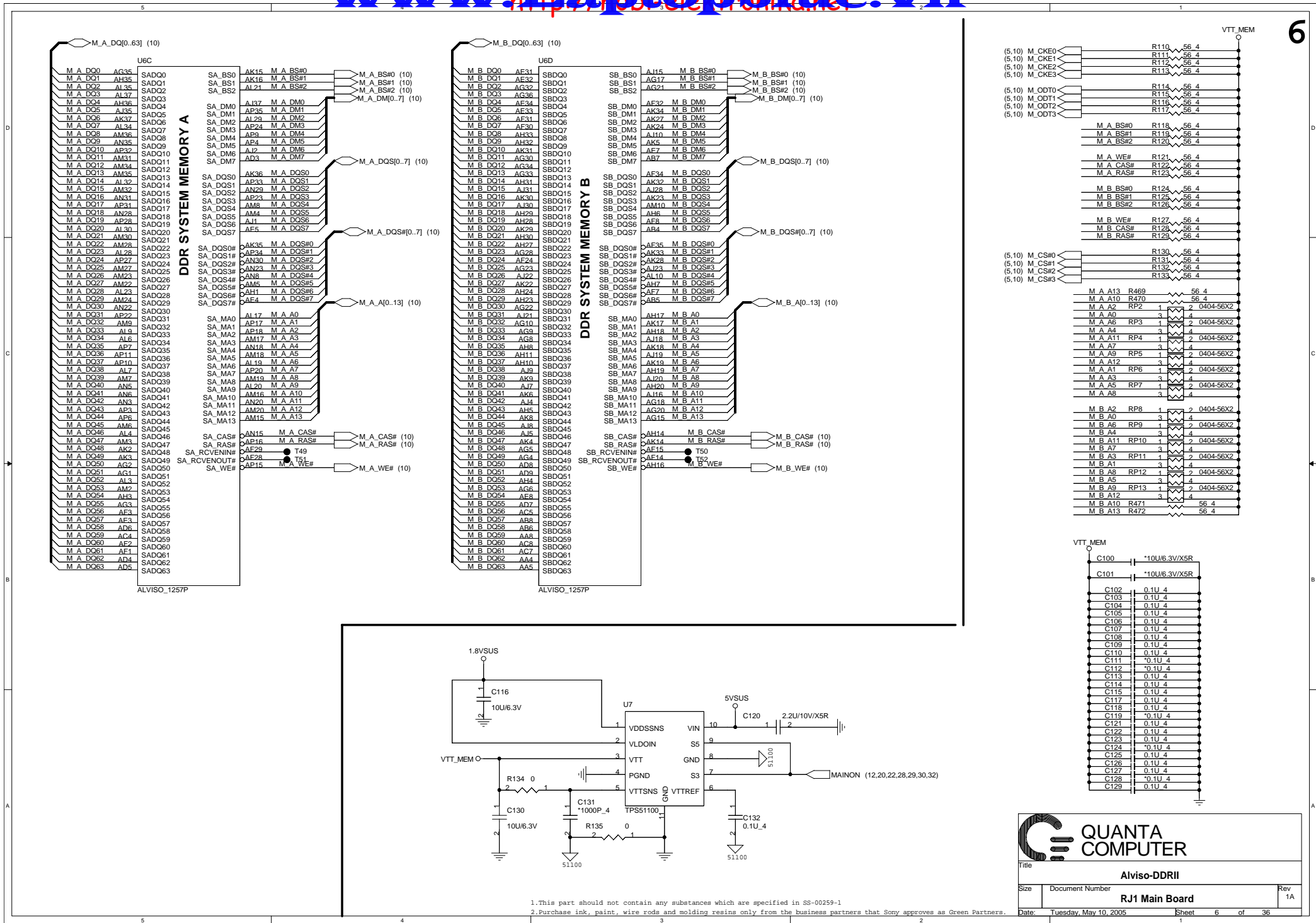
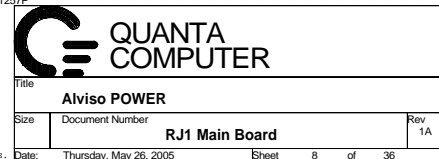


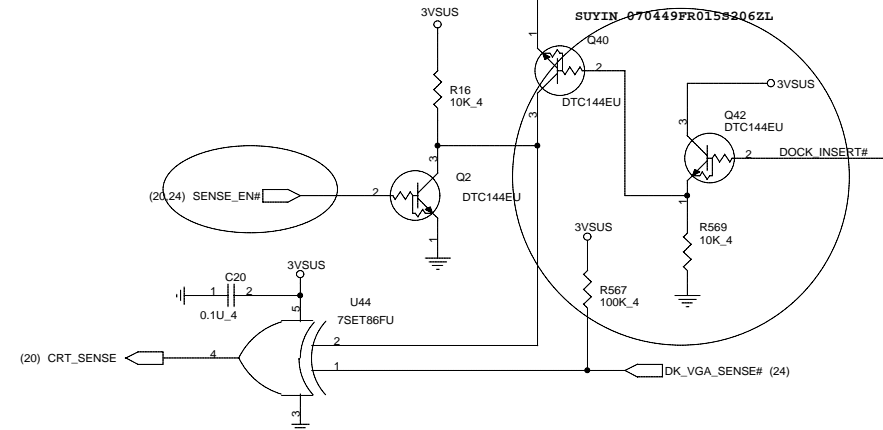
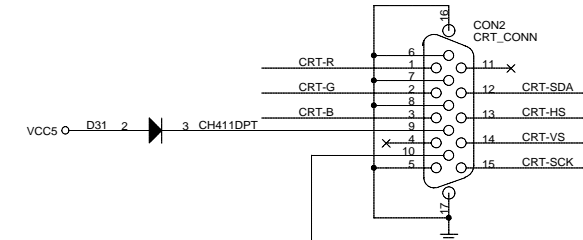
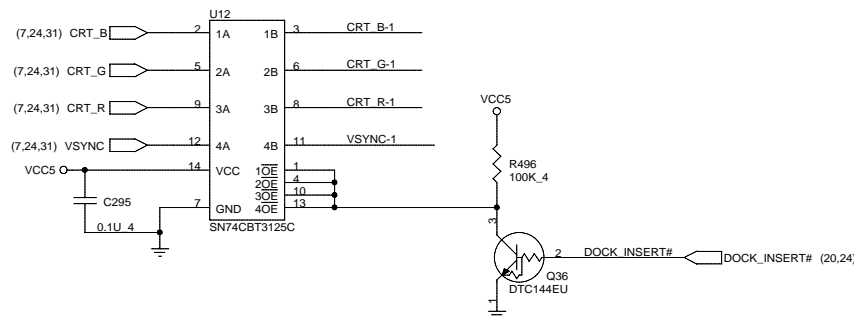
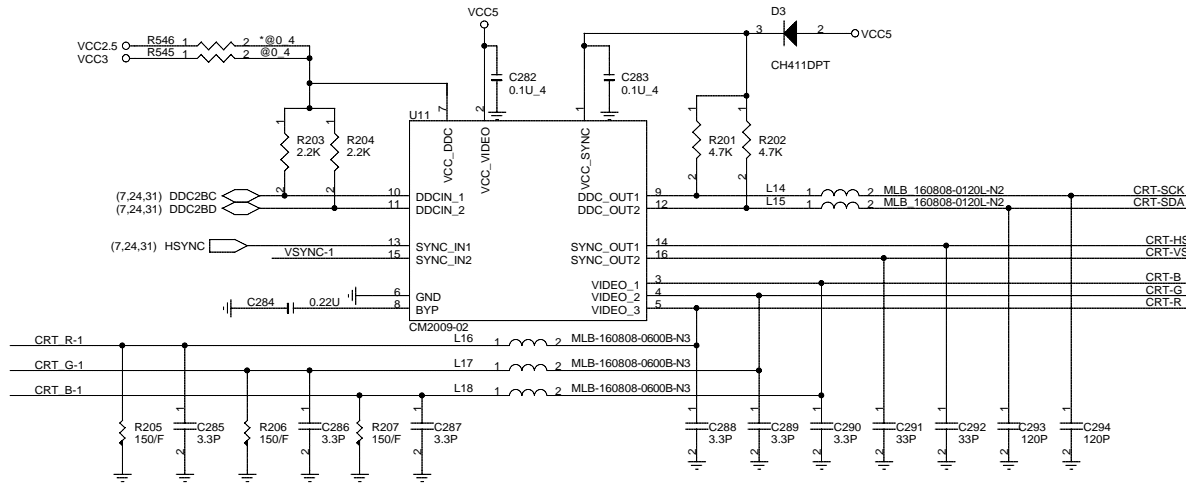


| | | | | | | | |
|-------|-----------------------|--|--|---------------------|---|----|-----------|
| Title | | | | Dothan CPU-B | | | |
| Size | Document Number | | | | | | Rev |
| | RJ1 Main Board | | | | | | 1A |
| Date: | Tuesday, May 10, 2005 | | | Sheet | 4 | of | 36 |









| | SENSE_EN# | MB CRT | DOCK CRT | DOCK DVI | CRT_SENSE |
|----------------------|-----------|--------|----------|----------|-----------|
| All no Plug | L | H | H | L | L |
| MB CRT Plug | L | L | H | L | H |
| DOCK CRT Plug | L | H | L | L | H |
| DOCK DVI Plug | L | H | H | H | H |
| SENSE EN | H | X | X | X | L |
| DOCK CRT/DVI Plug | L | H | L | H | L |
| DOCK CRT/MB CRT Plug | L | L | L | L | L |

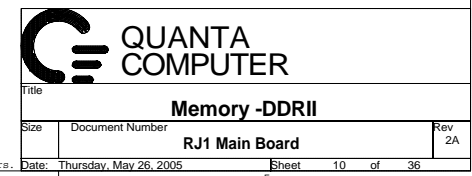
7SET86FU

| A | B | Y |
|---|---|---|
| H | H | L |
| H | L | H |
| L | H | H |
| L | L | L |

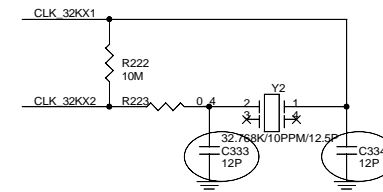
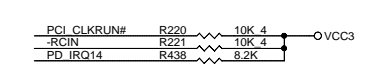
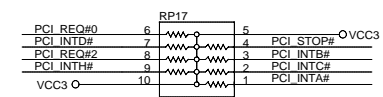
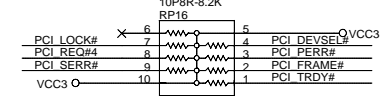
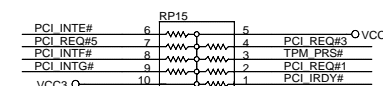
| Signal | | 915GM | 915PM |
|---------|------|-------|-------|
| VCC_DDC | R545 | NI | 0_4 |
| | R546 | 0_4 | NI |



| | | | |
|----------------|-----------------------|--------|---------|
| Title | | | CRT |
| Size | Document Number | Rev 2A | |
| RJ1 Main Board | | | |
| Date: | Tuesday, May 10, 2005 | Sheet | 9 of 36 |



| | H_DPRSTP# | H_SLP# |
|------------------------------|-----------|--------|
| For Dothan A-X step | *0 | 0 |
| *For Dothan B-X step & later | 0 | *0 |

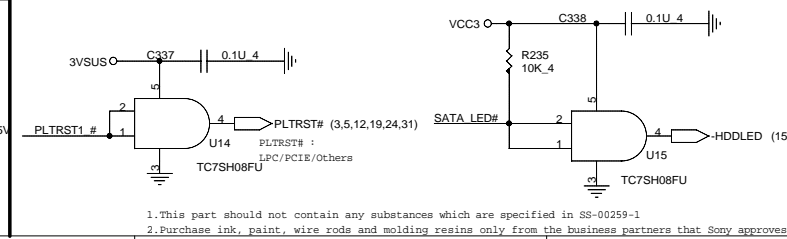
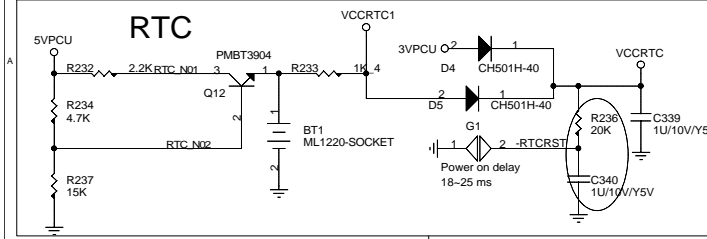
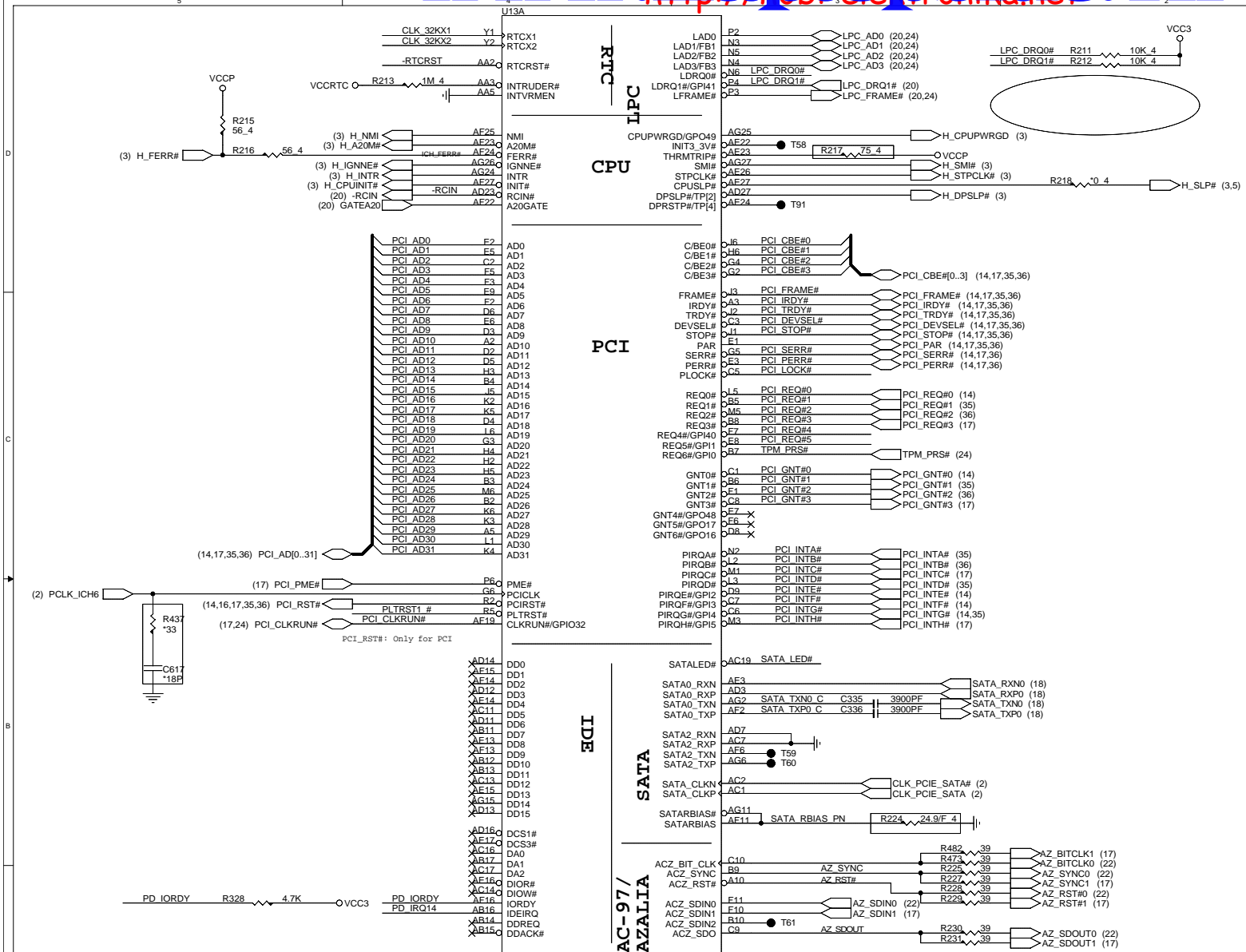


PCI_REQ0 : TI-7411
PCI_REQ1 : VT6212
PCI_REQ2 : SATA(s11 3512)
PCI_REQ3 : MINI PCI
PCI_REQ4 :
PCI_REQ5 : X
PCI_REQ6 : X
 IDSEL: (AD16 ~ 29)
AD24 : SATA(s11 3512)
AD25 : TI-7411
AD26 : MINI PCI
AD27 : VT6212

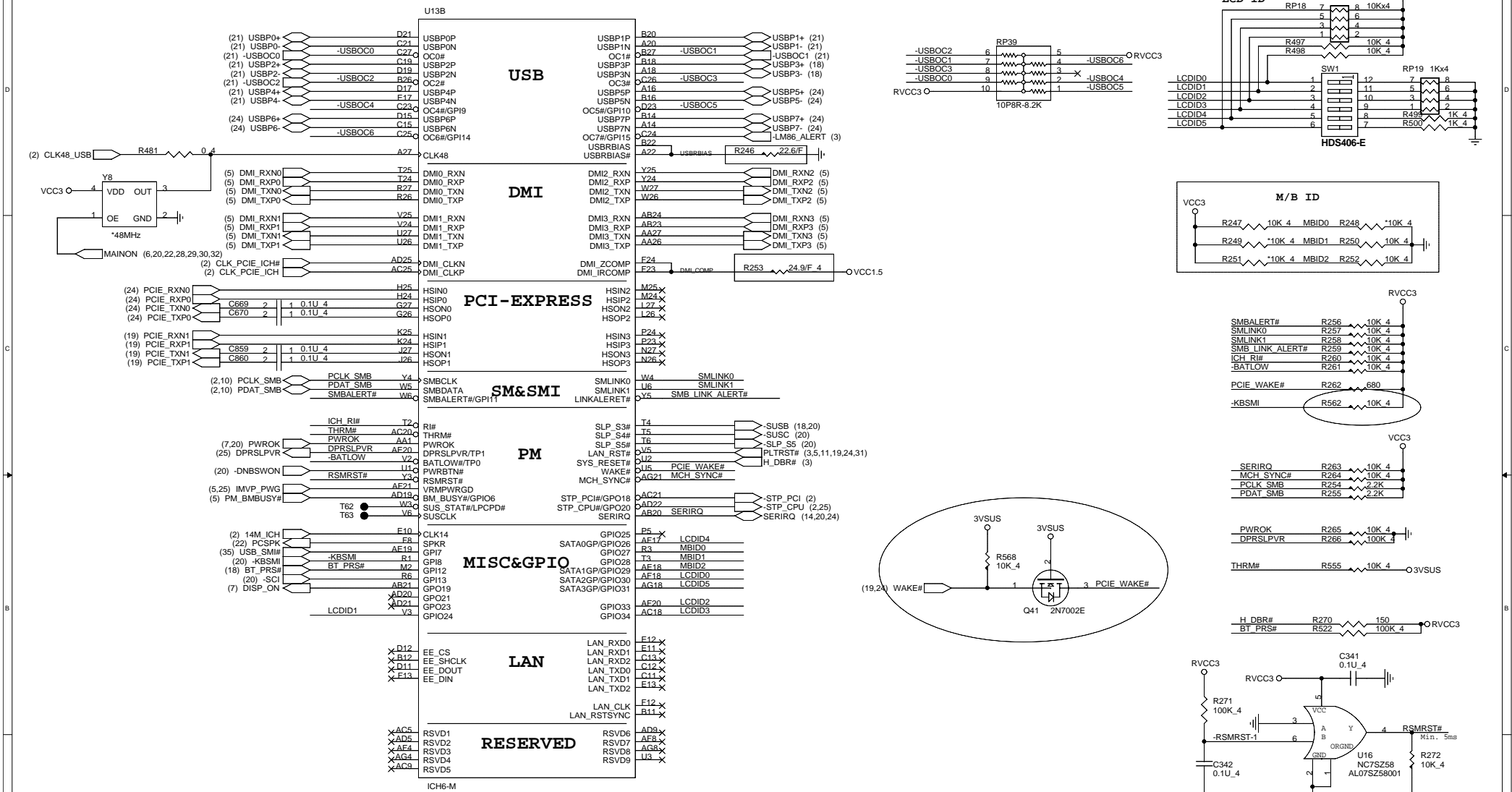
PCI_INTA# : VT6212
PCI_INTB# : SATA(s11 3512)
PCI_INTC# : MINI PCI
PCI_INTD# : VT6212
PCI_INTE# : TI-7411
PCI_INTG# : TI-7411, VT6212
PCI_INT# : MINI PCI



| | | | |
|-----------------------------|-----------------|--------|----------|
| Title | | ICH6-M | |
| Size | Document Number | Rev 2A | |
| Date: Tuesday, May 10, 2005 | | Sheet | 11 of 36 |

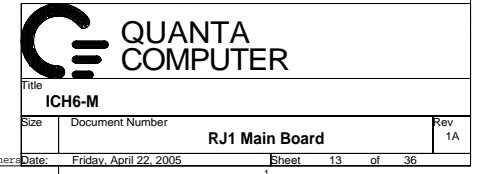


1. This part should not contain any substances which are specified in SS-00259-1
 2. Purchase ink, paint, wire rods and molding resins only from the business partners that Sony approves as Green Partners.

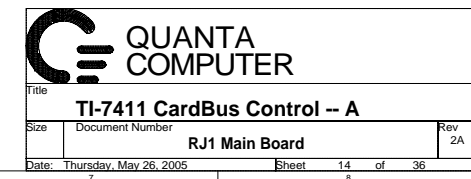


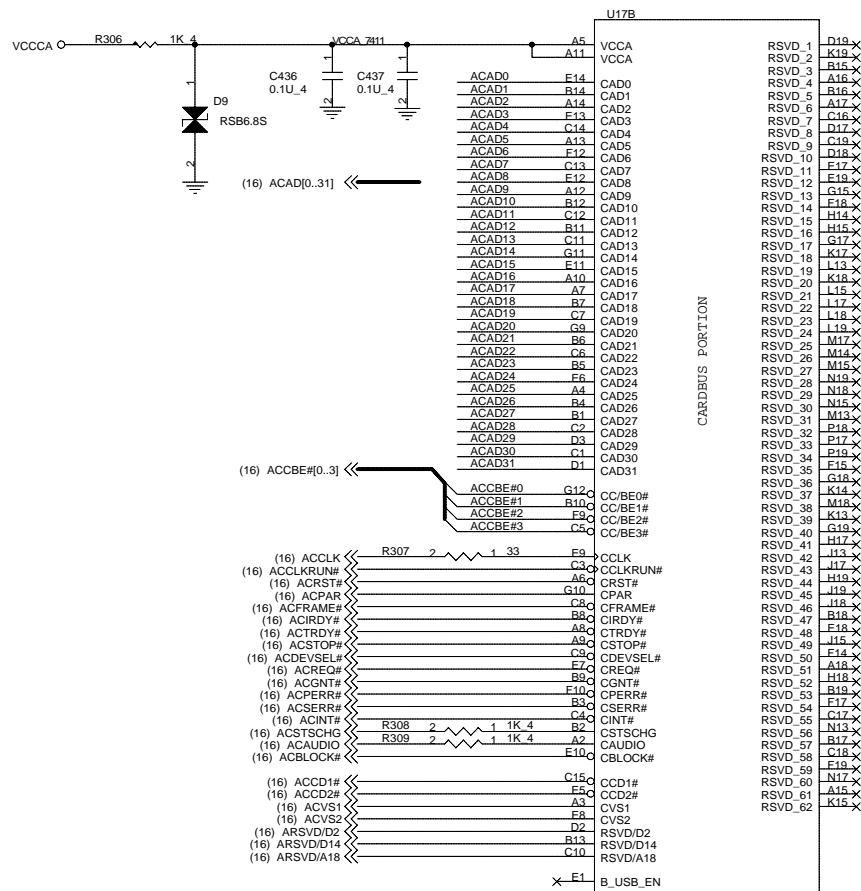
QUANTA COMPUTER

Title: **ICH6-M**
 Size: **RJ1 Main Board**
 Date: Tuesday, May 10, 2005
 Sheet 12 of 36
 Rev 2A

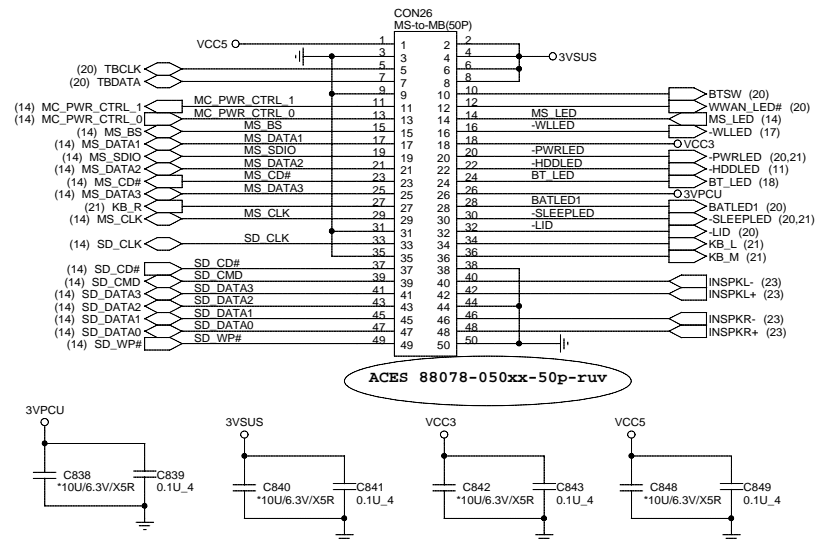


| | | | |
|--|--|----------------|------------------------|
| 1.This part should not contain any substances which are specified in SS-00259-1 | | RJ1 Main Board | |
| 2.Purchase ink, paint, wire rods and molding resins only from the business partners that Sony approves as Green Partners | | Date: | Friday, April 22, 2005 |
| | | Sheet | 13 of 36 |





TI_7411



ACES 88078-050xx-50p-ruv

1.This part should not contain any substances which are specified in SS-00259-1
2.Purchase ink, paint, wire rods and molding resins only from the business partners that Sony approves as Green Partners.

LED_GP :LED WLEN LINK

Output Current : 7mA

Blink rate : 1 flash

per every 3 sec.

WLSW:

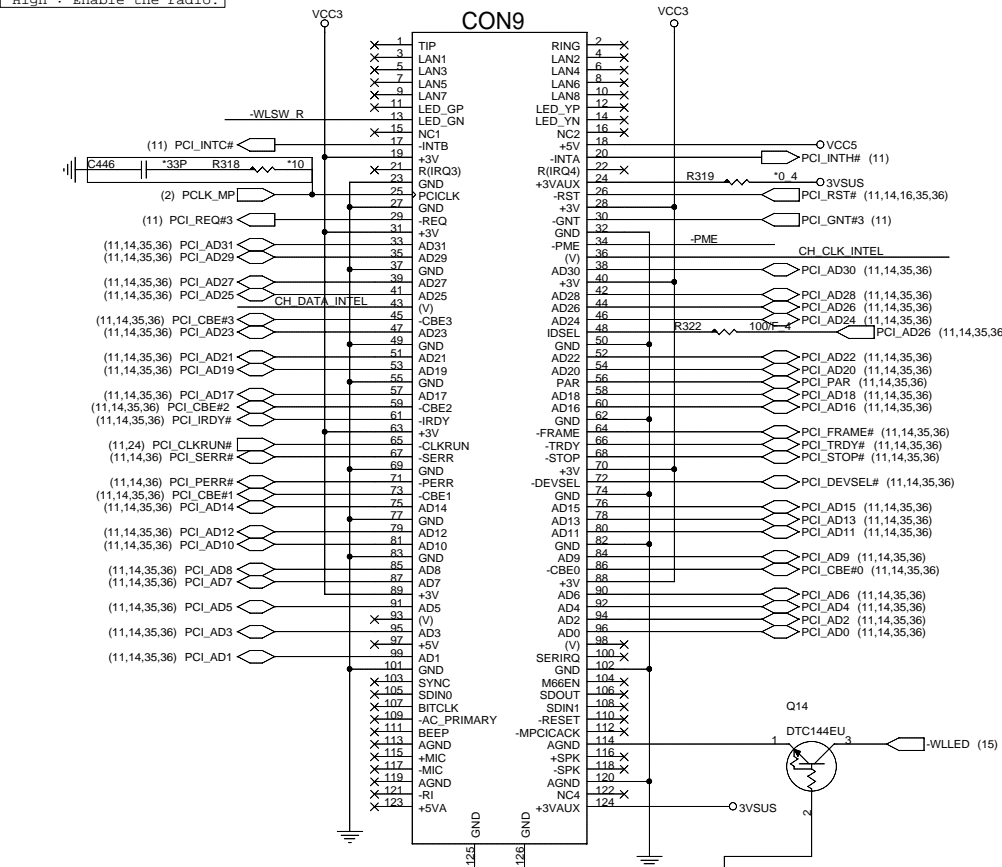
Low : disable the radio.

High : Enable the radio.

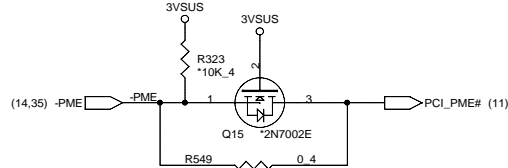
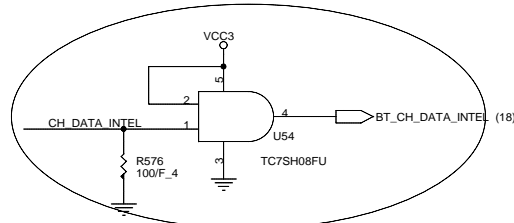
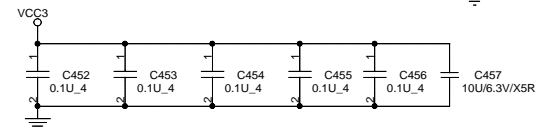
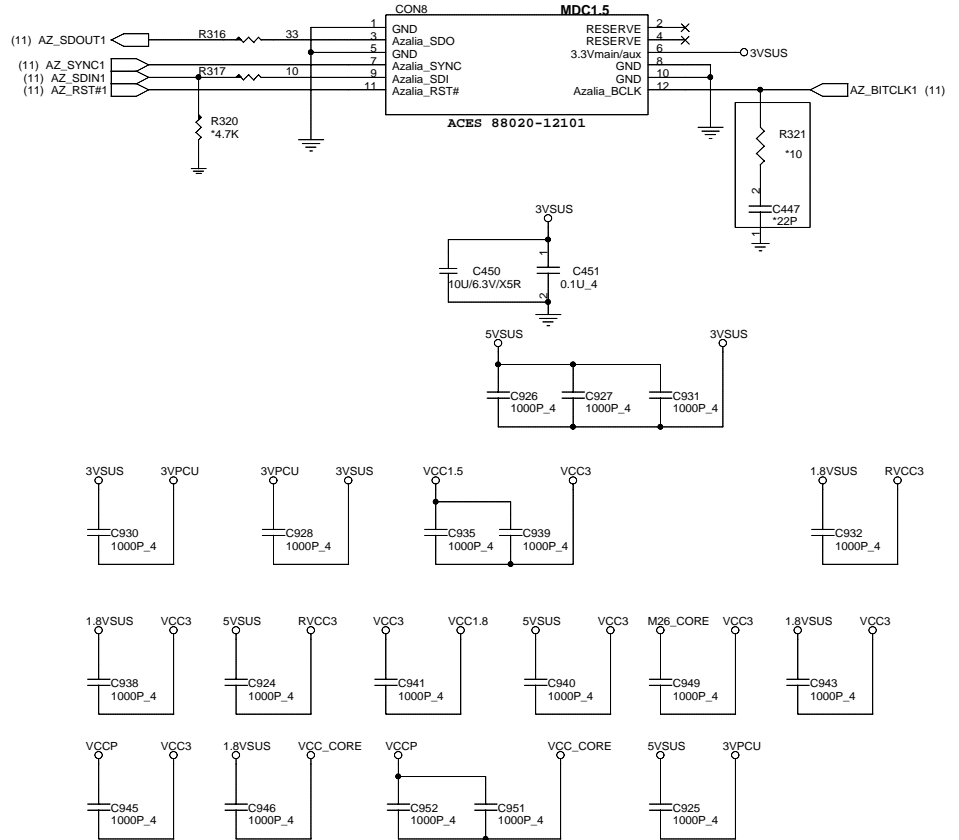
AMP 1734835-2

MINIPCI H=6.7

CON9



MDC V1.5

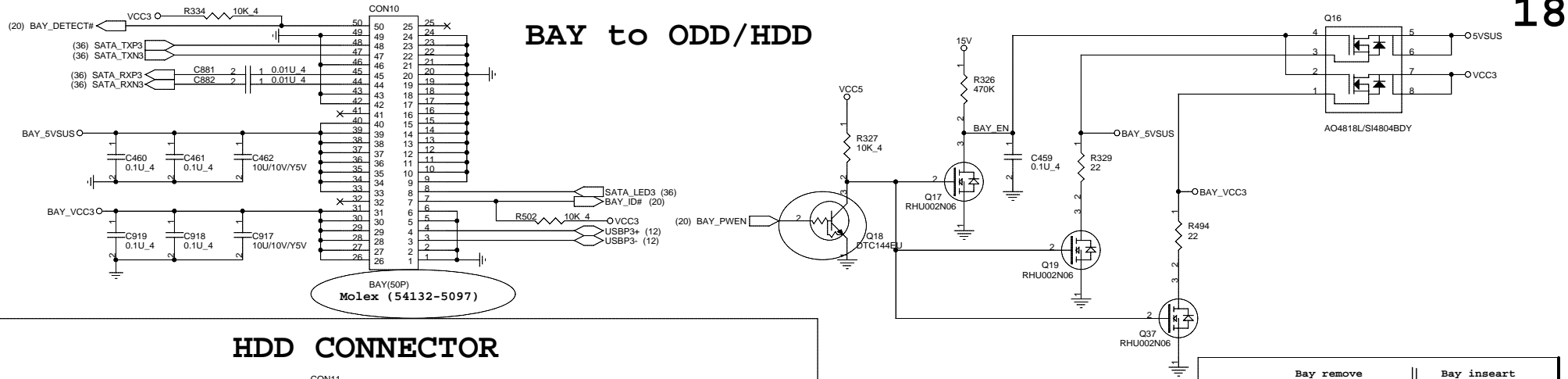


QUANTA COMPUTER

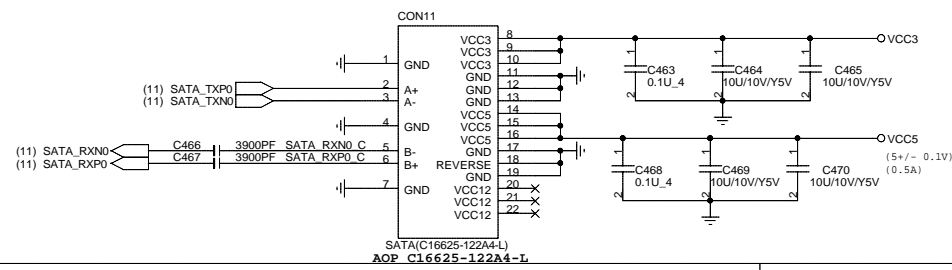
| | | | |
|-----------------------------|-----------------|----------------|--|
| Title | | MINIPCI /MDC | |
| Size | Document Number | Rev 2A | |
| Date: Tuesday, May 10, 2005 | | Sheet 17 of 36 | |

1. This part should not contain any substances which are specified in SS-00259-1
2. Purchase ink, paint, wire rods and molding resins only from the business partners that Sony approves as Green Partners.

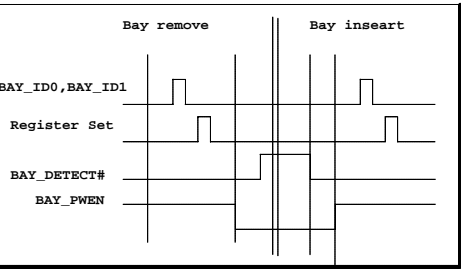
BAY to ODD/HDD



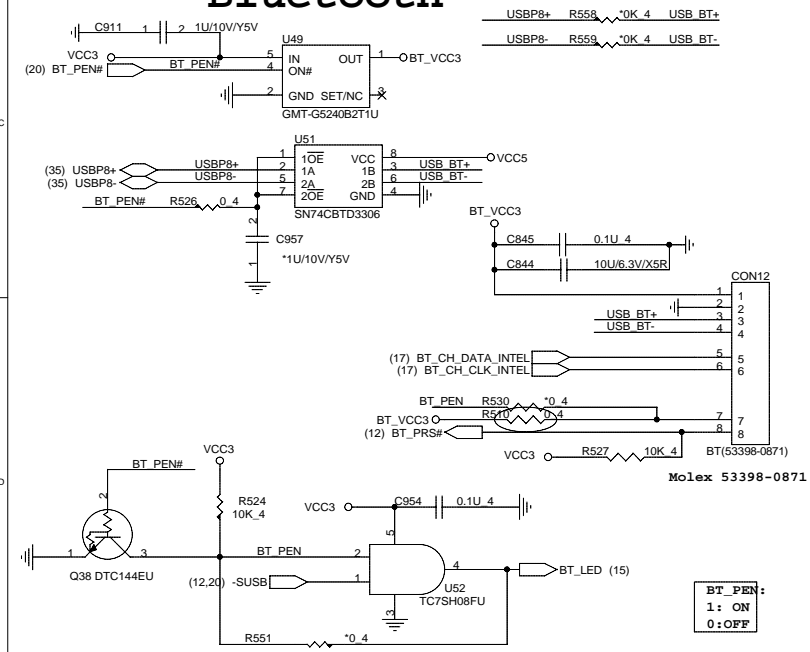
HDD CONNECTOR



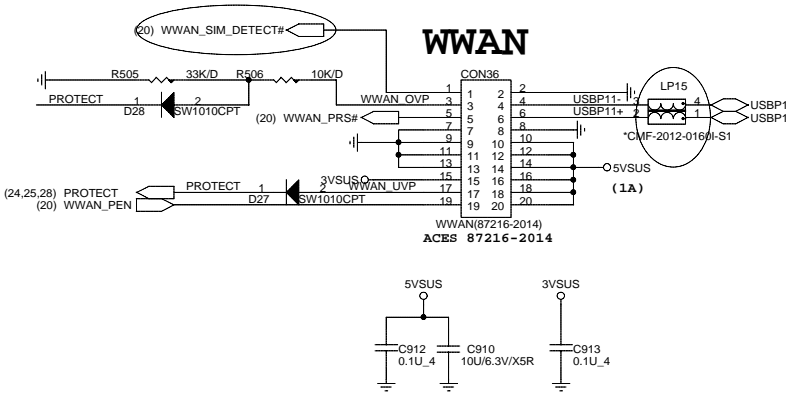
| BAY_ID# | |
|---------|-------------|
| 0 | SATA Device |
| 1 | USB Device |



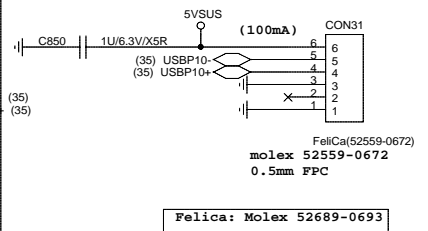
Bluetooth



WWAN

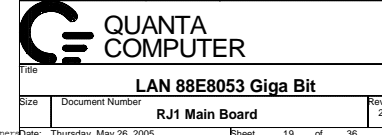


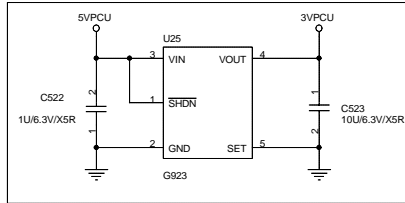
FeliCa

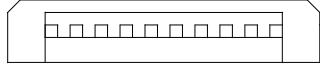


| | | | |
|------------------------------|-----------------|----------------|--|
| Title | | HDD/BAY/BT | |
| Size | Document Number | Rev 2A | |
| Date: Thursday, May 26, 2005 | | Sheet 18 of 36 | |

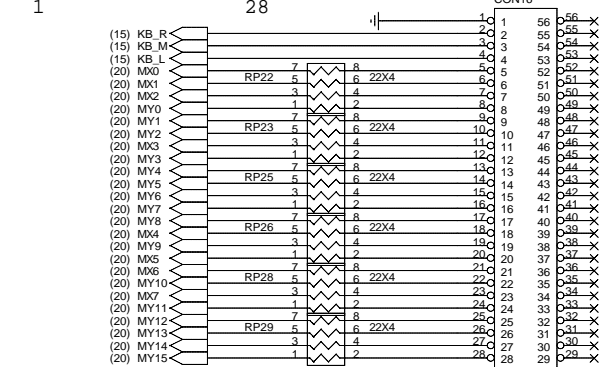
1.This part should not contain any substances which are specified in SS-00259-1.
2.Purchase ink, paint, wire rods and molding resins only from the business partners that Sony approves as Green Partners.





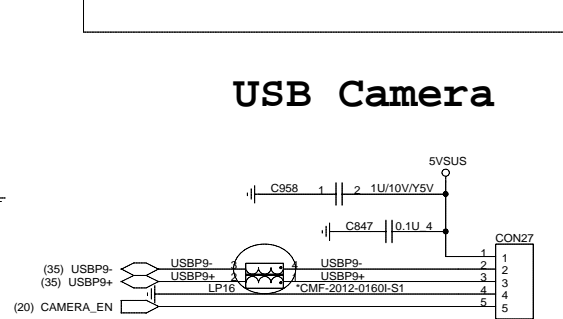
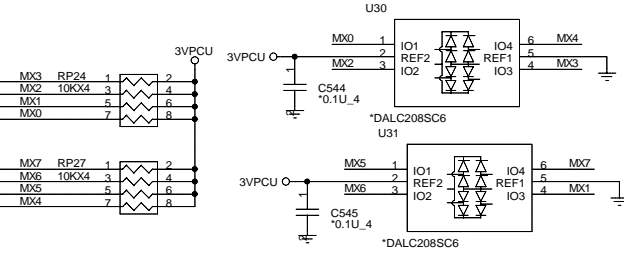


KEYBOARD



MOLEX(52610-2871)

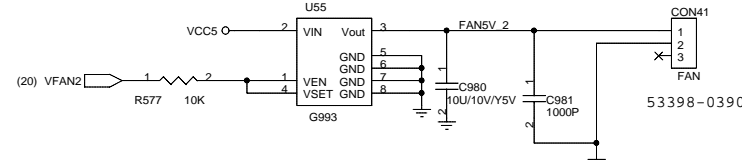
Molex 52610-2871



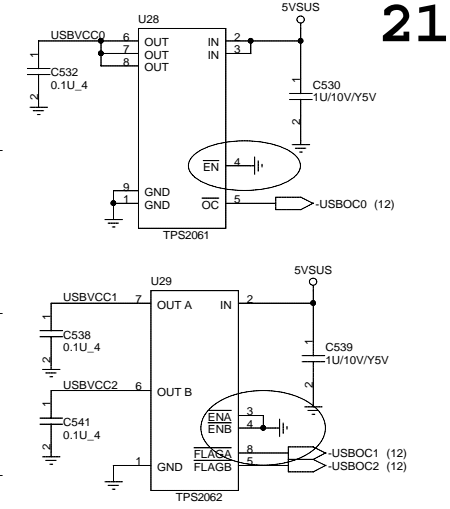
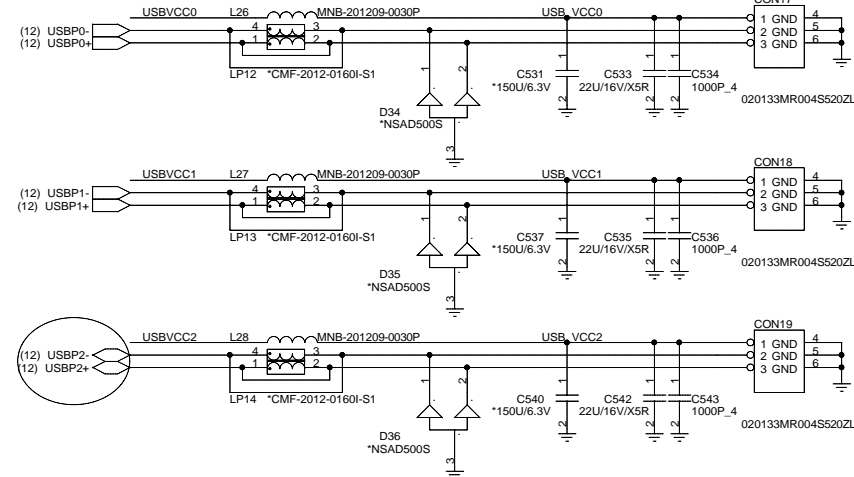
Camera(53398-0571)

Molex 53398-0571

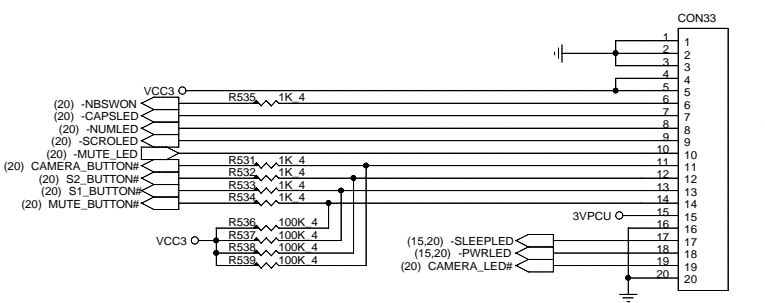
2nd FAN UNIT



53398-0390

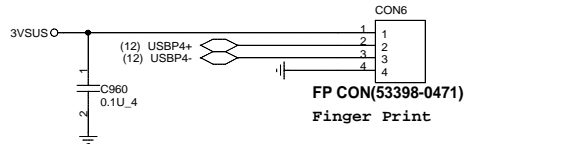


POWER SW BOARD



PS CON(52559-2070)

Molex 52559-2070

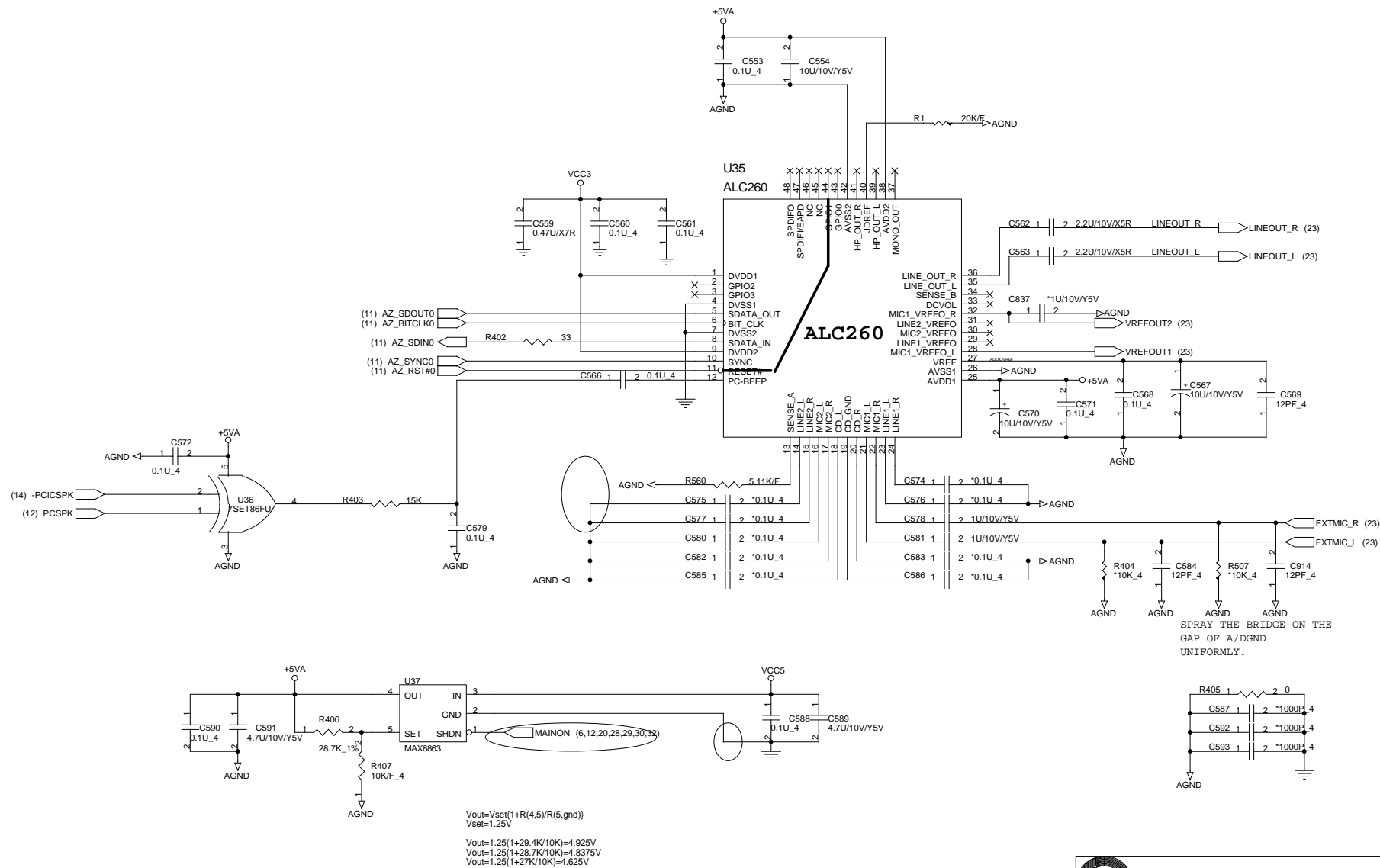


FP CON(53398-0471)

Finger Print



| | | | |
|----------------|-----------------------|--------|----------|
| Title | | | K/B ,USB |
| Size | Document Number | Rev 2A | |
| RJ1 Main Board | | | |
| Date: | Tuesday, May 10, 2005 | Sheet | 21 of 36 |



QUANTA COMPUTER

Title: **Audio ALC260**

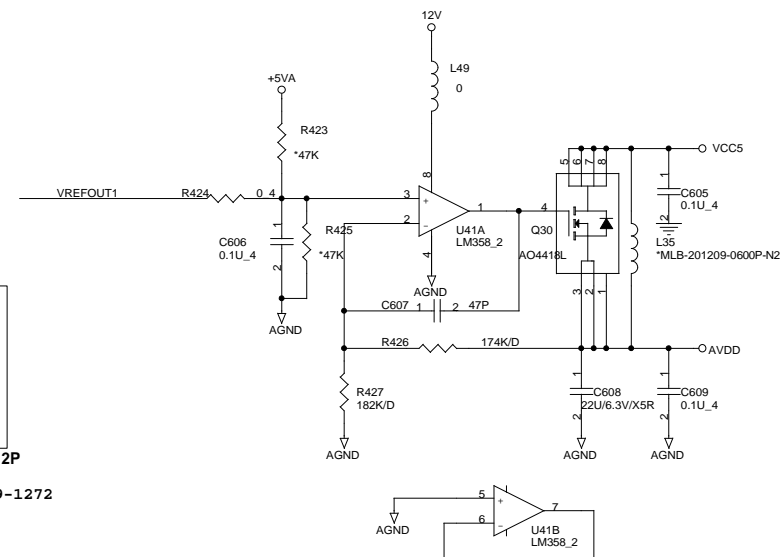
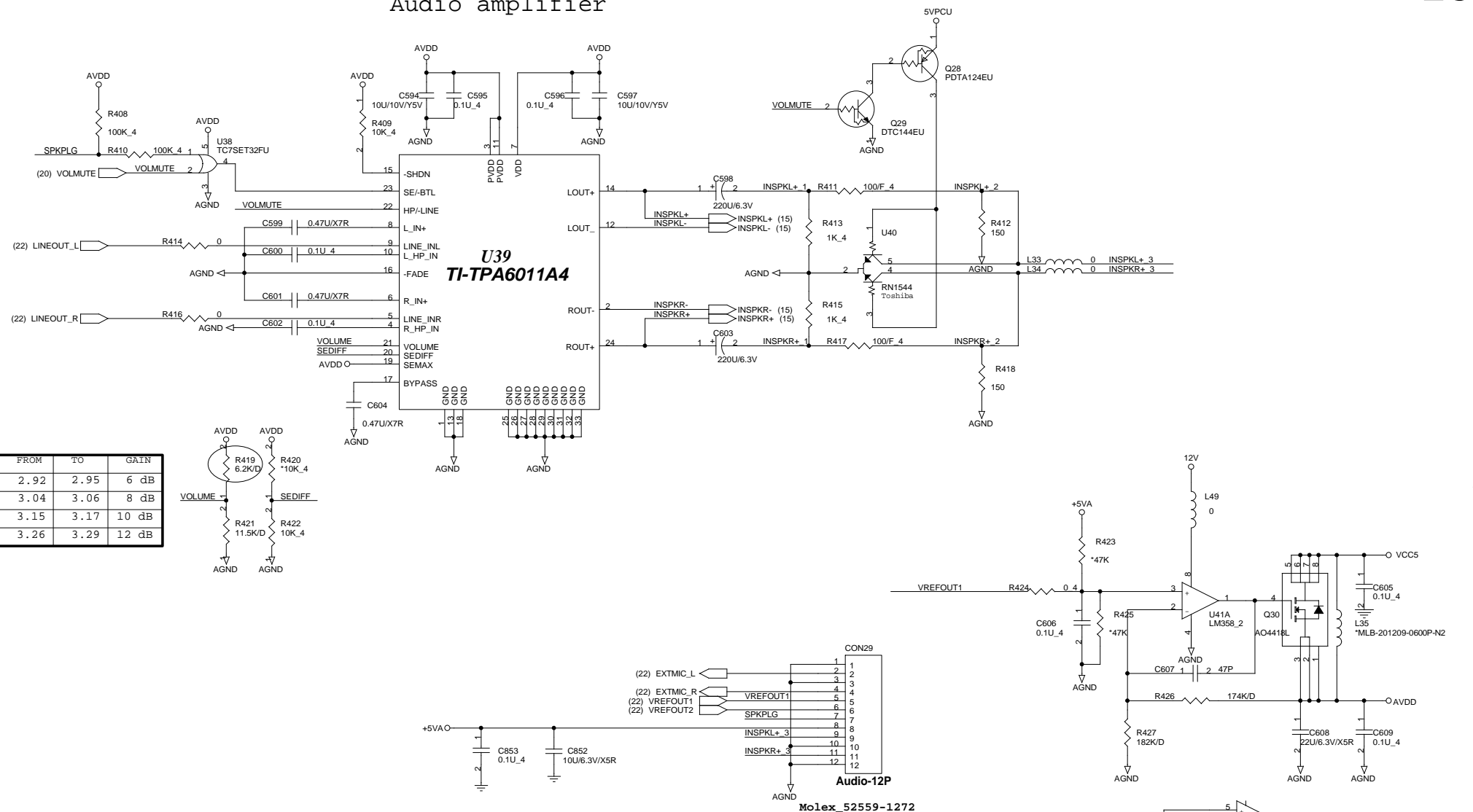
Size: **RJ1 Audio Board**

Document Number: **Rev 2A**

Date: **Thursday, May 26, 2005**

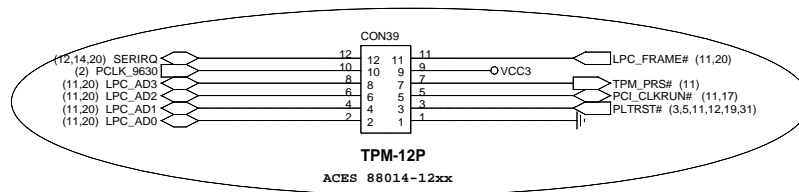
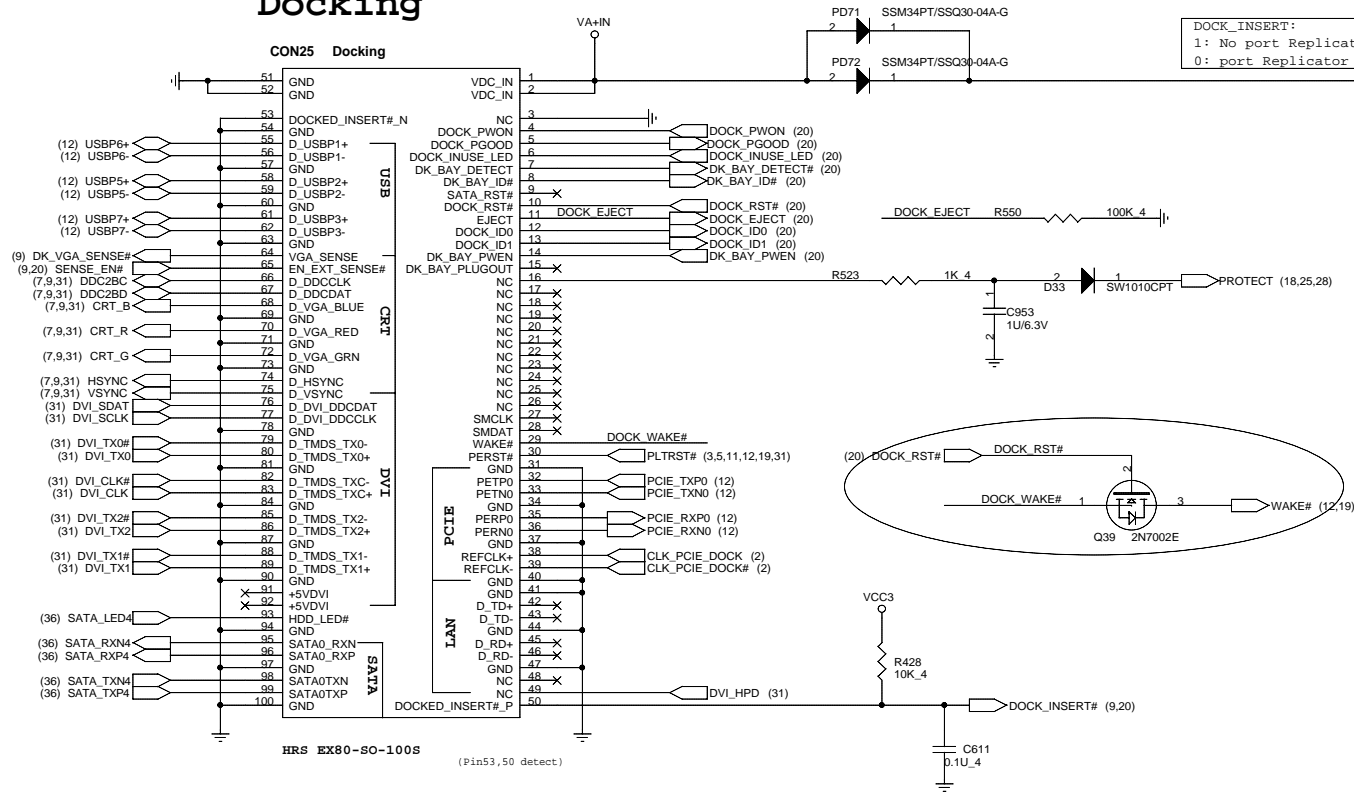
Sheet: **22** of **36**

Audio amplifier



1. This part should not contain any substances which are specified in SS-00259-1
2. Purchase ink, paint, wire rods and molding resins only from the business partners that Sony approves as Green Partners.

Docking

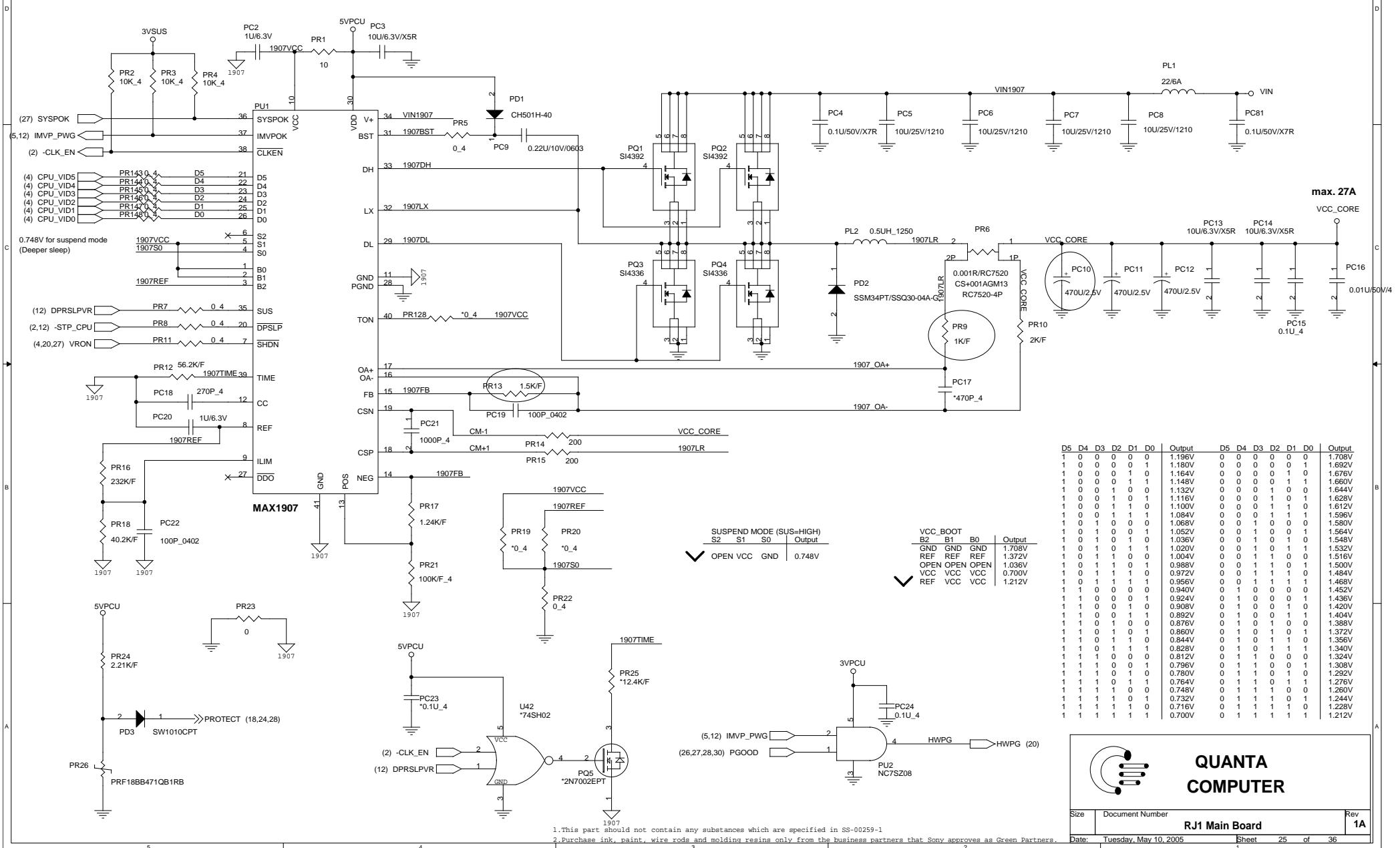


| | | | | | | | | | | |
|-------|--|-----------------------|--|--|-------------|--|-----|--|-------|--|
| Title | | | | | Docking/TPM | | | | | |
| Size | | Document Number | | | | | Rev | | | |
| | | RJ1 Main Board | | | | | 2A | | | |
| Date: | | Tuesday, May 10, 2005 | | | Sheet | | 24 | | of 36 | |

1.This part should not contain any substances which are specified in SS-00259-1


2.Purchase ink, paint, wire rods and molding resins only from the business partners that Sony approves as Green Partners.

CPU CORE



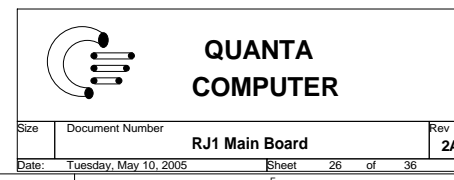
1. This part should not contain any substances which are specified in SS-00259-1

2. Purchase ink, paint, wire rods and molding resins only from the business partners that Sony approves as Green Partners.

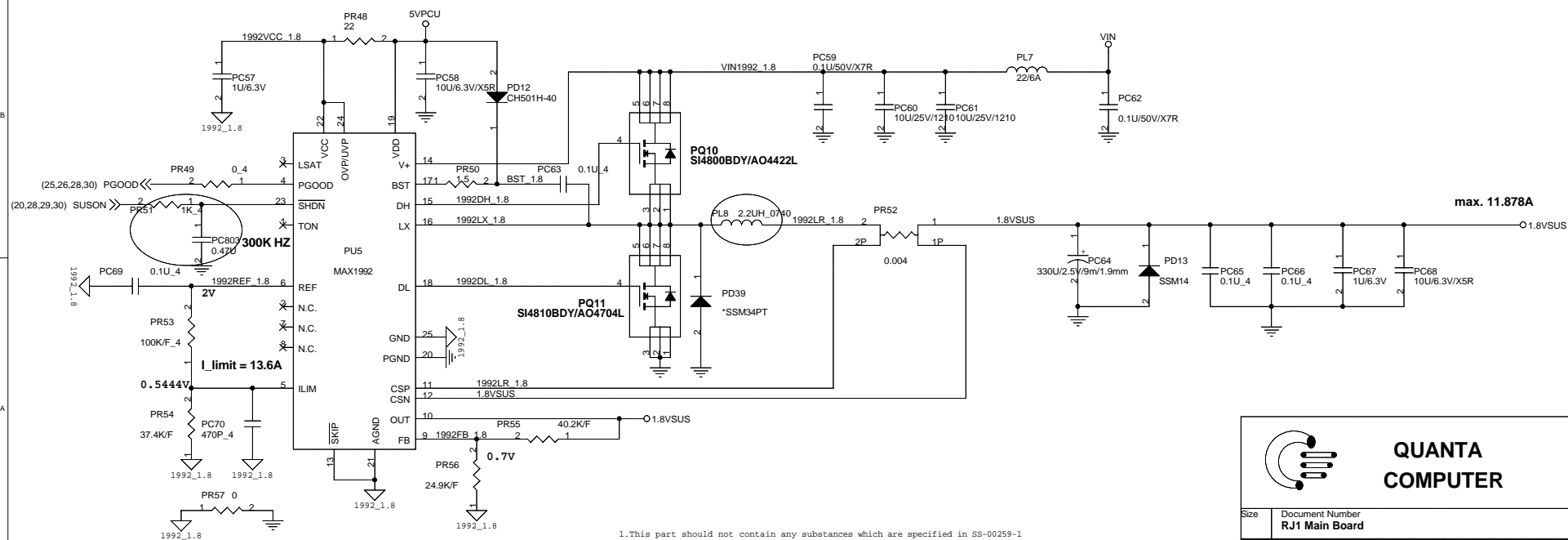
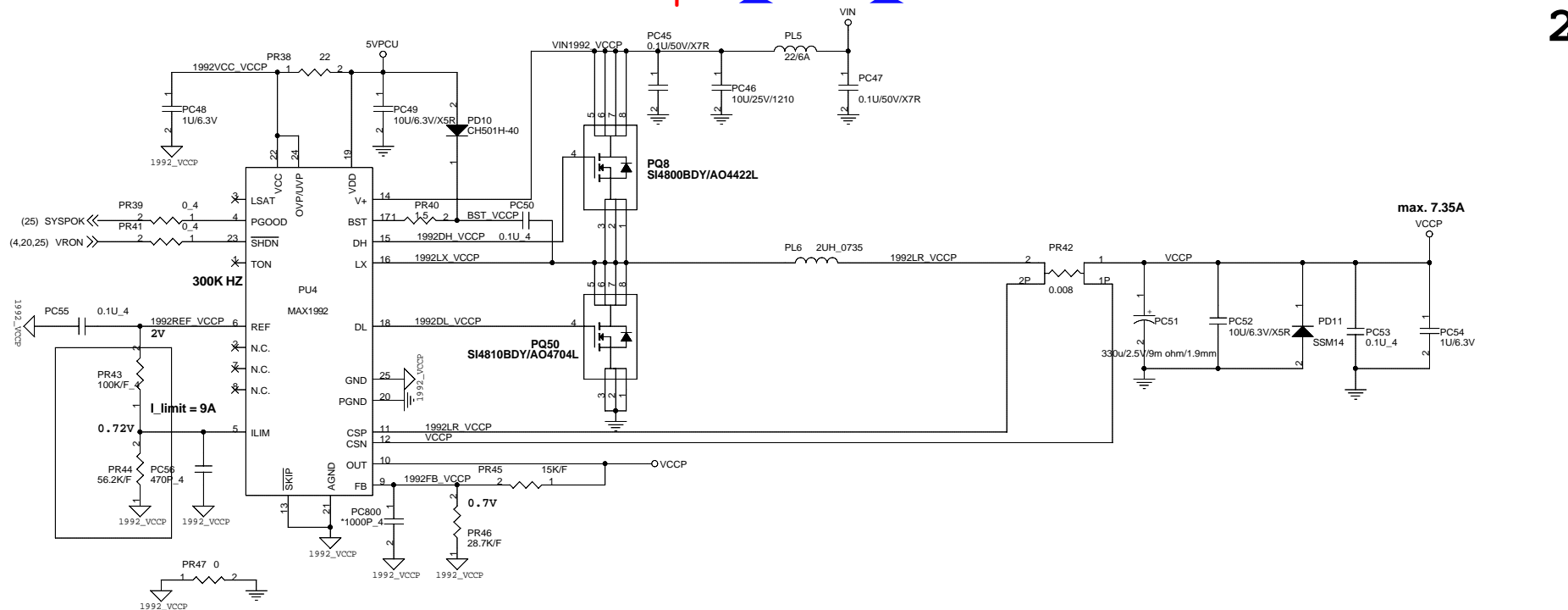


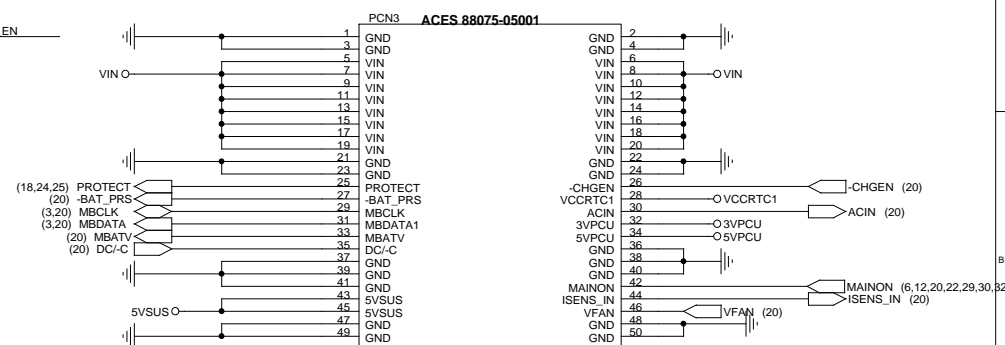
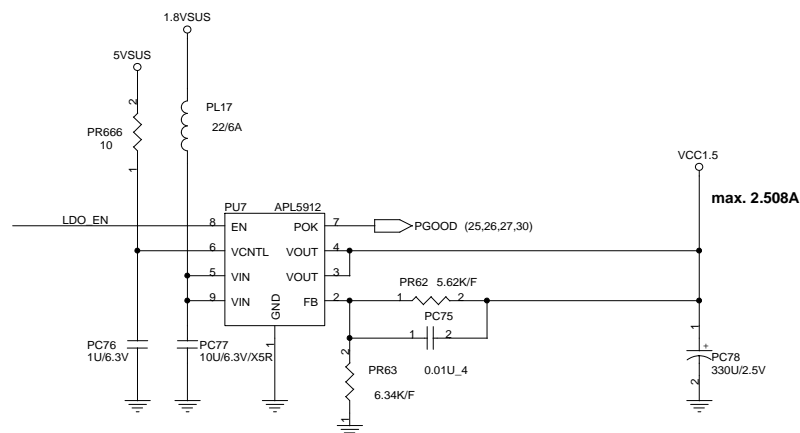
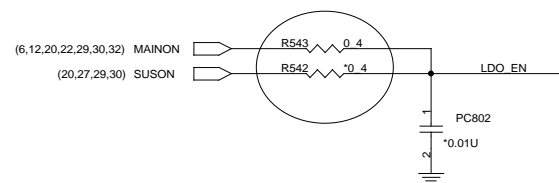
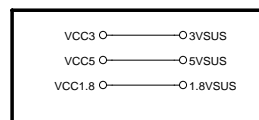
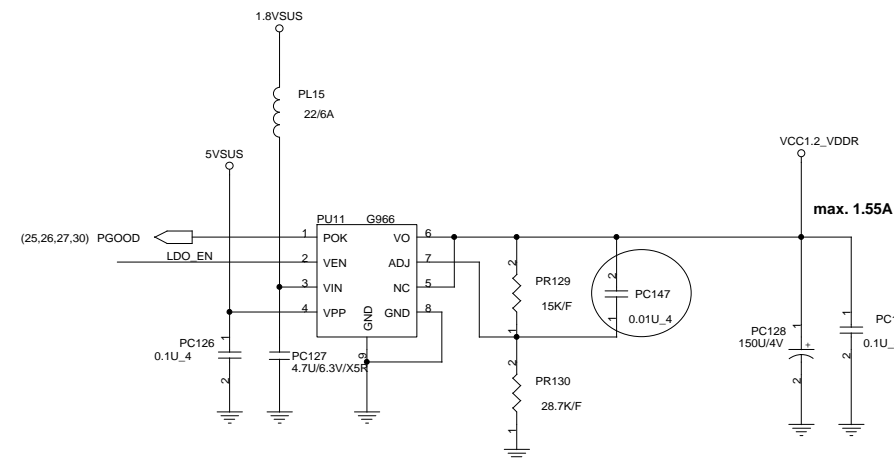
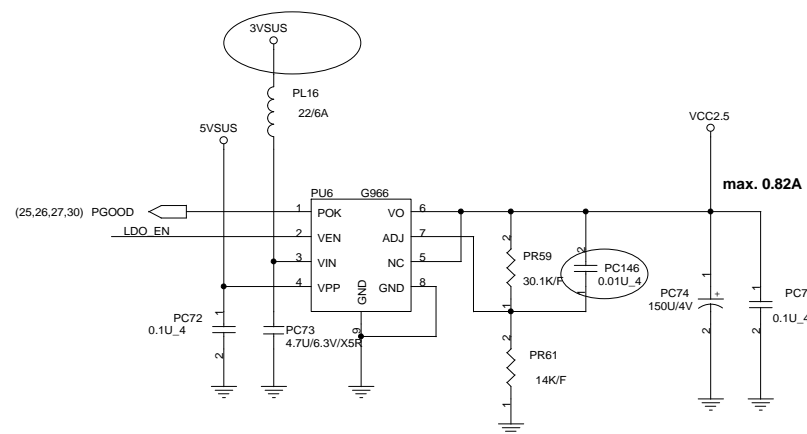
**QUANTA
COMPUTER**


| | | |
|-------|-----------------------|----------------|
| Size | Document Number | Rev |
| | RJ1 Main Board | 1A |
| Date: | Tuesday, May 10, 2005 | Sheet 25 of 36 |



2. Purchase ink, paint, wire rods and molding resins only from the business partners that Sony approves as Green Partners



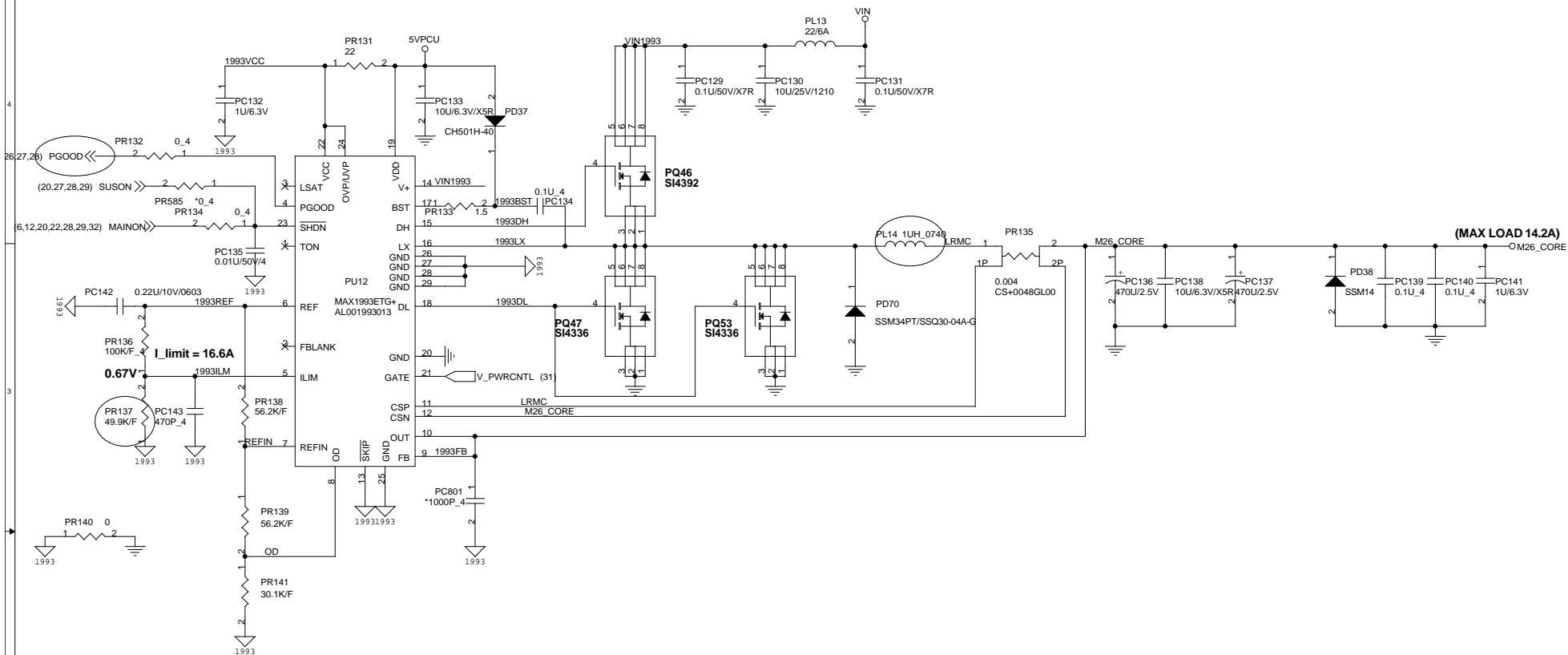




**QUANTA
COMPUTER**

| | | |
|-------|-----------------------|----------------|
| Size | Document Number | Rev |
| | RJ1 Main Board | 2A |
| Date: | Tuesday, May 10, 2005 | Sheet 28 of 36 |

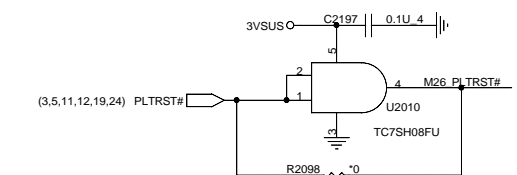
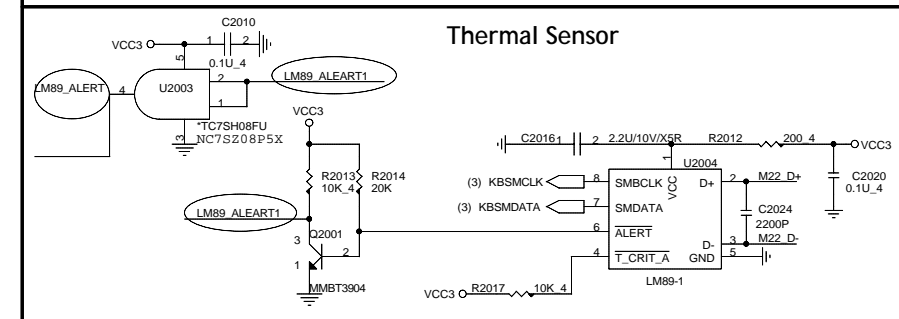
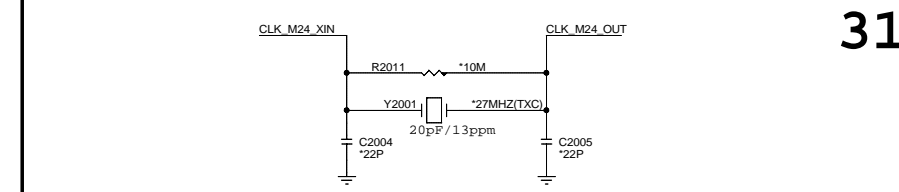




M24_CORE voltage setting:

| | PR138 Value | PR139 Value | PR141 Value | V_PWRCNTL | |
|-----|----------------|----------------|----------------|-----------|------|
| | | | | Low | High |
| M24 | 49.9 K/F | 49.9 K/F | 27.4 K/F | 1.215V | 1V |
| | 56.2 K/F | 56.2 K/F | 30.1 K/F | 1.211V | 1V |



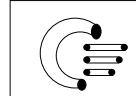


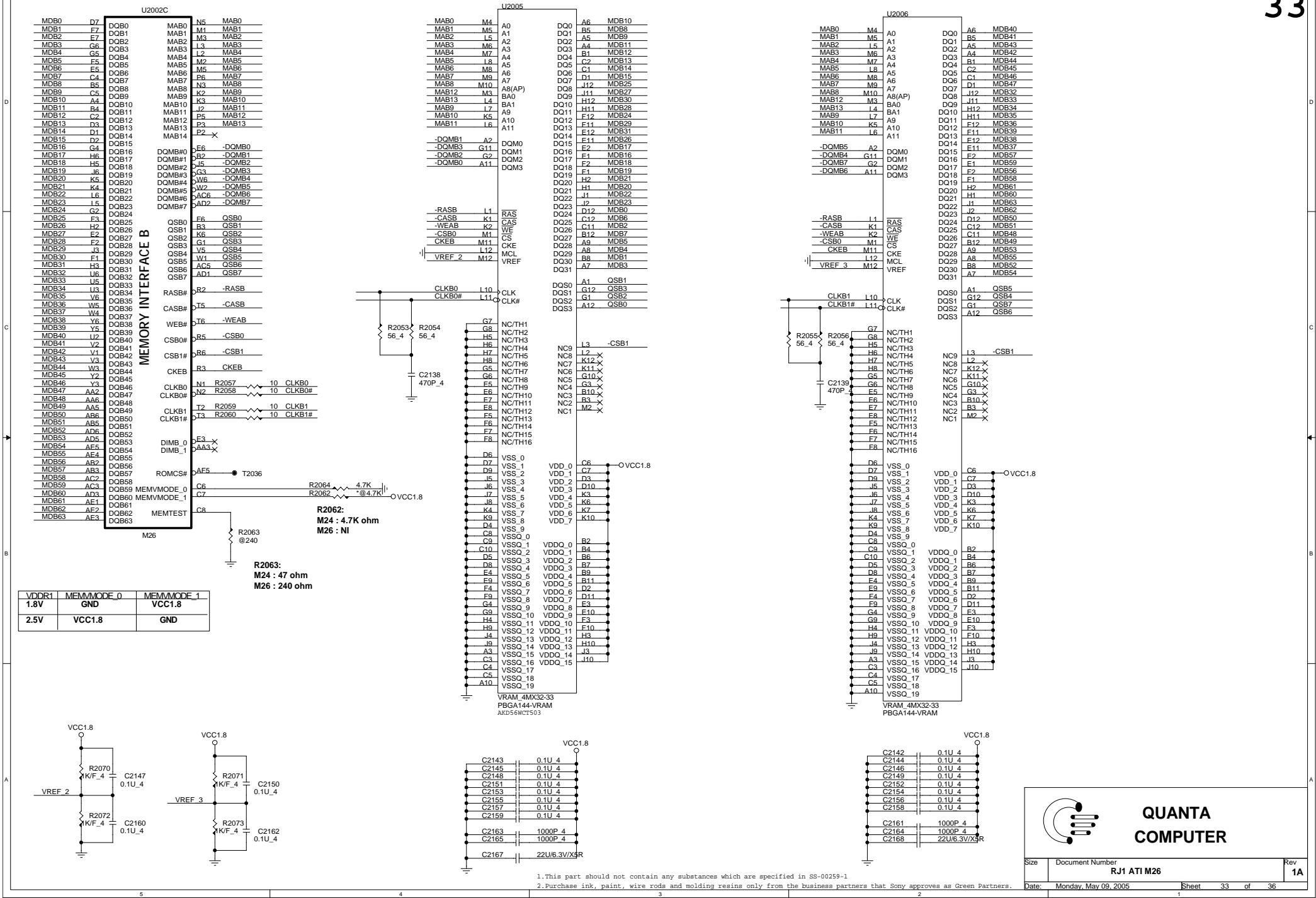
| | |
|--------------------------------------|--|
| PCI_TEST | ATI Internal USE 0: Default |
| GPIO_0 | Transmitter Power Savings Enable 0: 50% Tx output swing for mobile mode 1: full Tx output swing |
| GPIO_1 | Transmitter De-emphasis Enable 0: Tx de-emphasis disabled for mobile mode 1: Tx de-emphasis enabled |
| GPIO_(3,2) | 00: PCI Express 1.0 mode 01: Kyrene-compatible mode 10: PCI Express 1.0 mode 11: PCI Express 1.0A mode and short-circuit internal loopback mode (Rx connected directly to Tx of PHY) |
| GPIO_4 | 0: NON REVERSED LANES IN LAYOUT 1: REVERSED LANES IN LAYOUT |
| GPIO_5 | DO NOT FORCE COMPLIANCE STATE QUICKLY |
| GPIO_6 | COMMON MODE RANGE 0: Default |
| GPIO_8 | DEBUG SIGNALS NOT BROUGHT OUT |
| GPIO(9,13;11) ROMIDCFG INT P/D | NO USE:0000 (ID[1:4] = GPIO[11,12,13,9]) 0x0x: NO ROM, CHG_ID=0 0x1x: NO ROM, CHG_ID=1 1011 - Serial M25P10 ROM (ST), chip ID is from ROM 1100 - Serial M25P05 ROM (ST), chip ID is from ROM |



**QUANTA
COMPUTER**

| | | |
|------|-----------------------|----------------|
| Size | Document Number | Rev |
| | RJ1 ATI M26 | 2A |
| Date | Tuesday, May 10, 2005 | Sheet 31 of 36 |



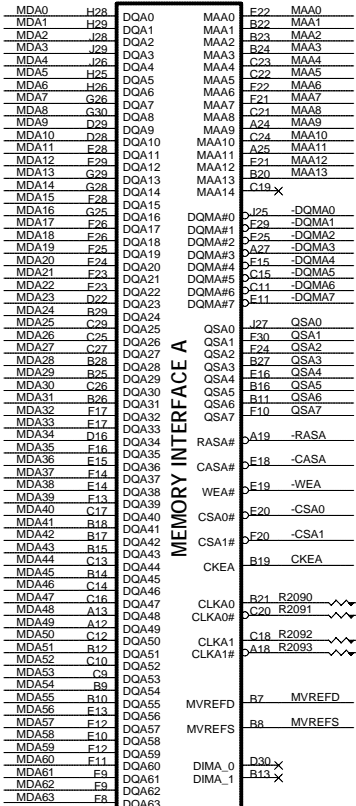


QUANTA COMPUTER

Size Document Number Rev
R01 ATI M26 1A

Date: Monday, May 09, 2005 Sheet 33 of 36

U2002B



MEMORY INTERFACE A

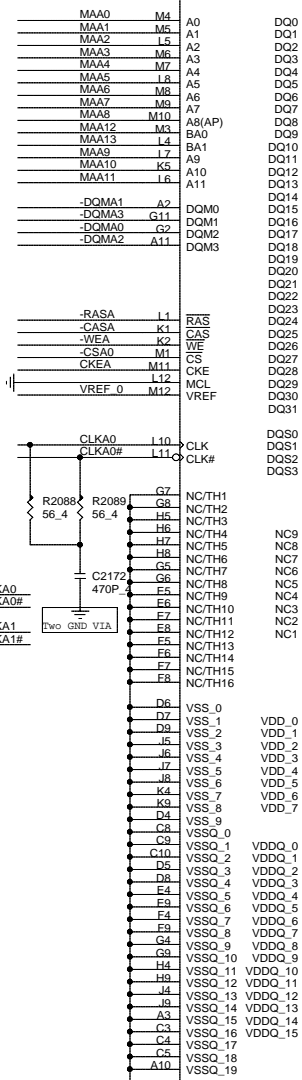
MVREFD

MVREFS

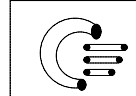
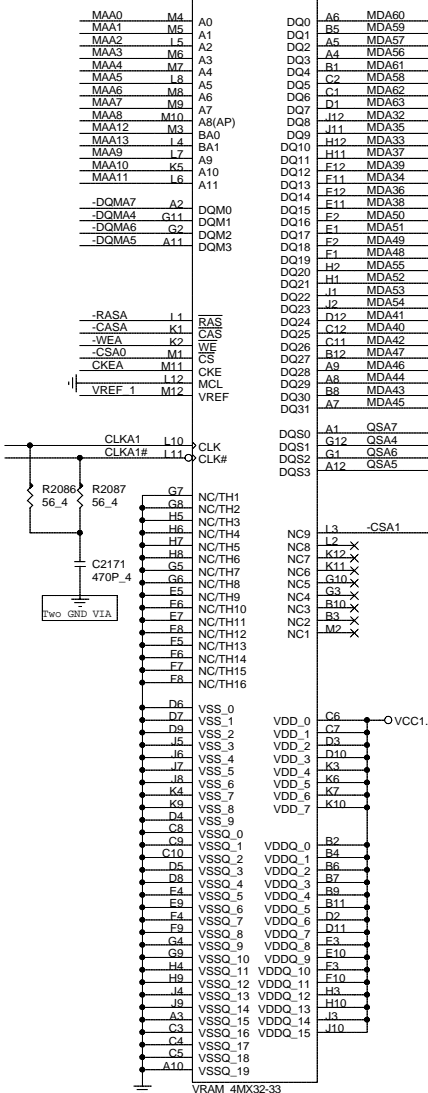
DIMA_0

DIMA_1

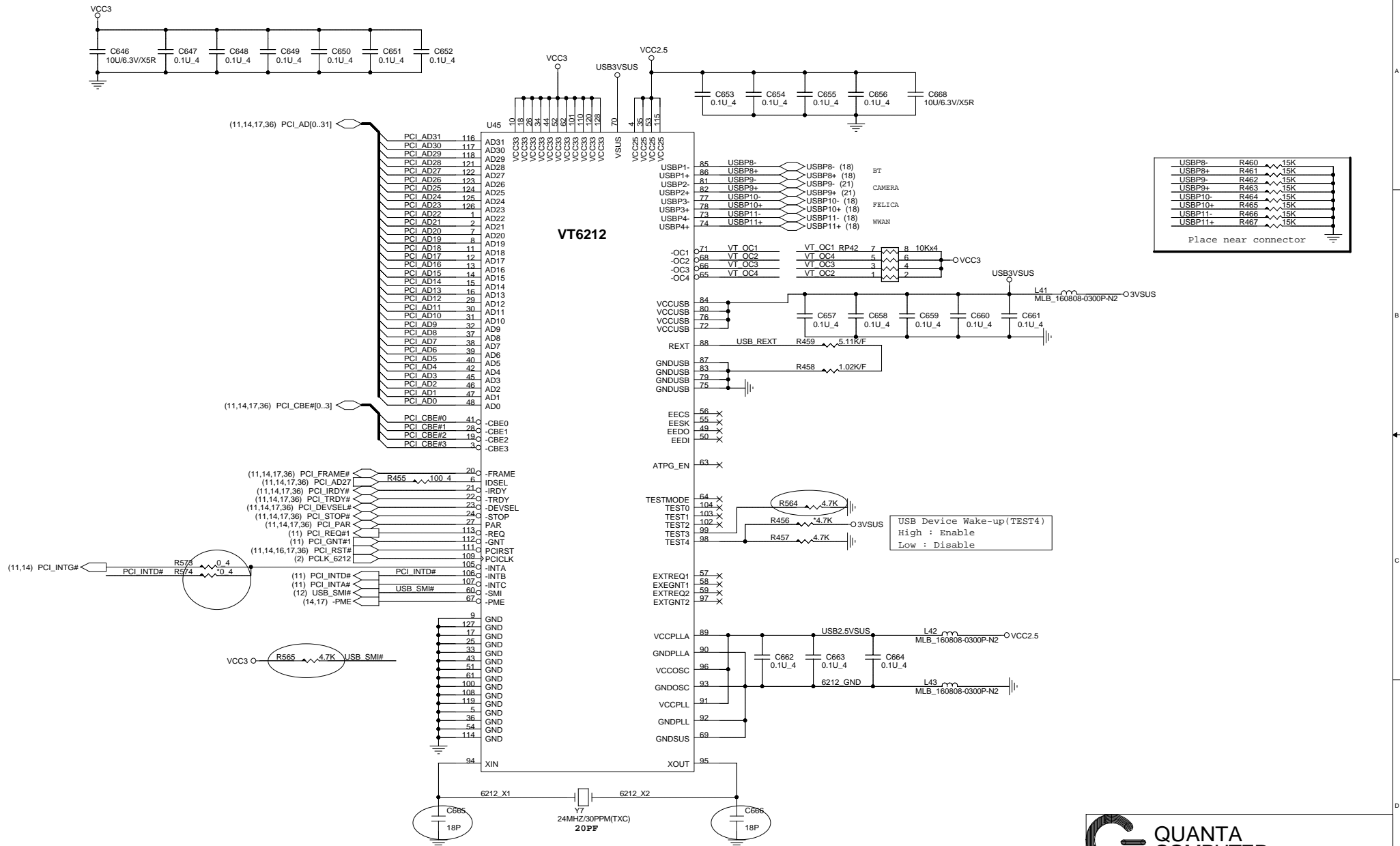
U2009



U2008



QUANTA
COMPUTER



1. This part should not contain any substances which are specified in SS-00259-1

2. Purchase ink, paint, wire rods and molding resins only from the business partners that Sony approves as Green Partners.

QUANTA COMPUTER

Title: **USB Controller VT6212**

Size: Custom Document Number: **RJ1 Main Board** Rev: 2A

Date: Thursday, May 26, 2005 Sheet: 35 of 36

