

SEL_SATA	SS3	SS2	VCO MHZ	27,26 MHZ	Spread %	
1	0	0	tbd	100	-0.2	Down
1	0	1	tbd	100	-0.3	Down
1	1	0	tbd	100	-0.4	Down
1	1	1	tbd	100	-0.5	Down

Signal		945GM	945PM
	R578	NI	71.5
CLK_PCIE_M56	RP32	NI	33X2
	RP49	NI	49.9
DREFSSCLK	RP36	33X2	NI
	RP52	49.9X2	NI
	R528	NI	121
	R529	NI	33
DREFCLK	RP37	33X2	NI
	RP53	49.9X2	NI
R_PCLK_ICH	R6	NI	10K



Date: Wednesday, May 03, 2006		Sheet 2 of 40	
-------------------------------	--	---------------	--

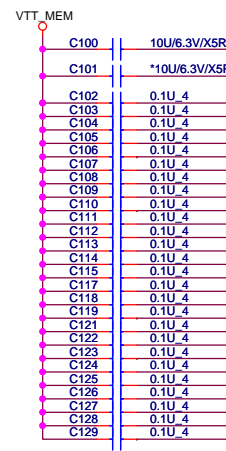
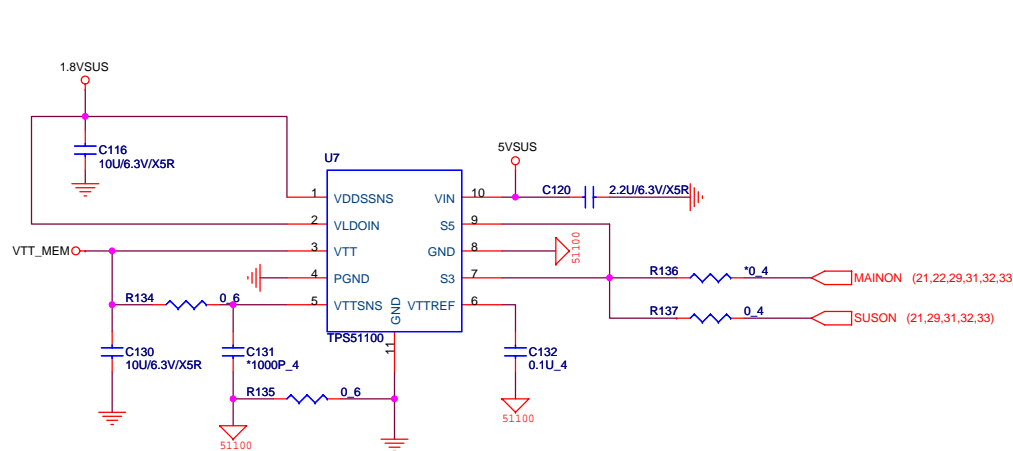
(3) CPU_BSEL1 (3) CPU_BSEL1 (5) MCH_BSEL1 (5)

SEL_LCD					17,18 MHZ	Spread %		SEL_LCD					17,18 MHZ	Spread %	
SS3	SS2	SS1	SS0					SS3	SS2	SS1	SS0				
1	0	0	0	0	96	+/-1.5	Center	0	0	0	0	0	27	+/-0.25	
1	0	0	0	1	96	+/-1.25		0	0	0	0	1	27	+/-0.5	
1	0	0	1	0	96	+/-1.0		0	0	0	1	0	27	+/-0.75	
1	0	0	1	1	96	+/-0.8		0	0	0	1	1	27	+/-1	
1	0	1	0	0	96	+/-0.6		0	0	1	0	0	27	+/-1.25	
1	0	1	0	1	96	+/-0.5		0	0	1	0	1	27	+/-1.5	
1	0	1	1	0	96	+/-0.4		0	0	1	1	0	27	+/-1.75	
1	0	1	1	1	96	+/-0.3		0	0	1	1	1	27	+/-2	
1	1	0	0	0	96	3	Down	0	1	0	0	0	27	-0.5	
1	1	0	0	1	96	2.5		0	1	0	0	1	27	-1	
1	1	0	1	0	96	2		0	1	0	1	0	27	-1.25	
1	1	0	1	1	96	1.75		0	1	0	1	1	27	-1.5	
1	1	1	0	0	96	1.5		0	1	1	0	0	27	-1.75	
1	1	1	0	1	96	1.25		0	1	1	0	1	27	-2	
1	1	1	1	0	96	1		0	1	1	1	0	27	-2.5	
1	1	1	1	1	96	0.8		0	1	1	1	1	27	-3	

FSC BSEL2	FSB BSEL1	FSA BSEL0	CPU	SRC	PCI	REF	USB	DOT	Spread %
0	0	0	266.66	100	33.33	14.318	48	96	0.5 Down
0	0	1	133.33	100	33.33	14.318	48	96	0.5 Down
0	1	0	200.00	100	33.33	14.318	48	96	0.5 Down
* 0	1	1	166.66	100	33.33	14.318	48	96	0.5 Down
1	0	0	333.33	100	33.33	14.318	48	96	0.5 Down
1	0	1	100.00	100	33.33	14.318	48	96	0.5 Down
1	1	0	400.00	100	33.33	14.318	48	96	0.5 Down
1	1	1	200.00	100	33.33	14.318	48	96	0.5 Down



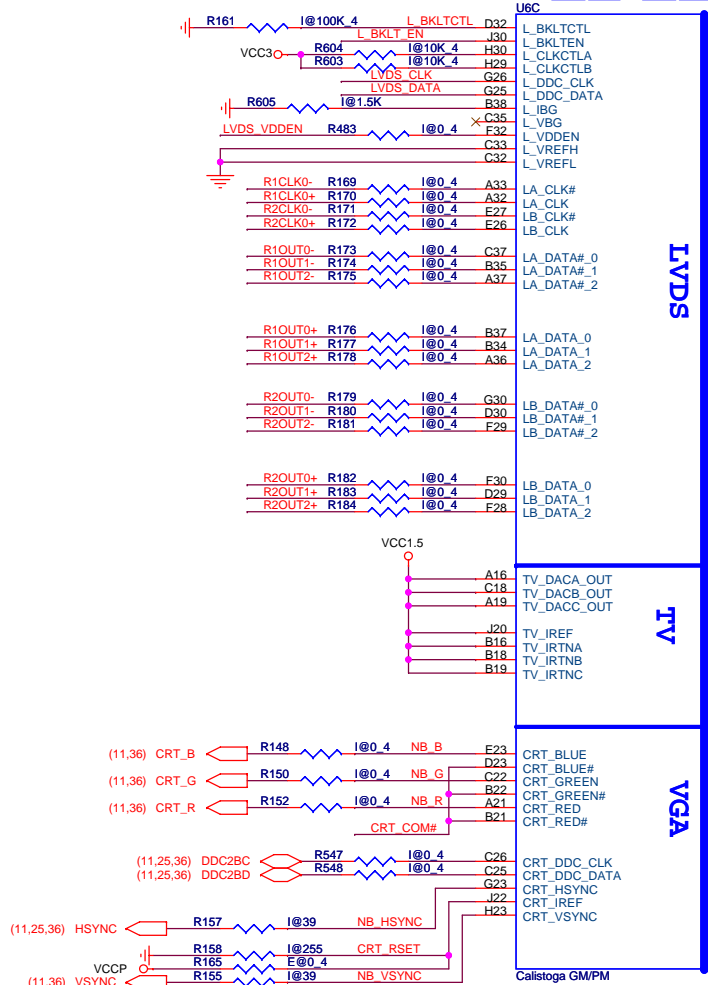


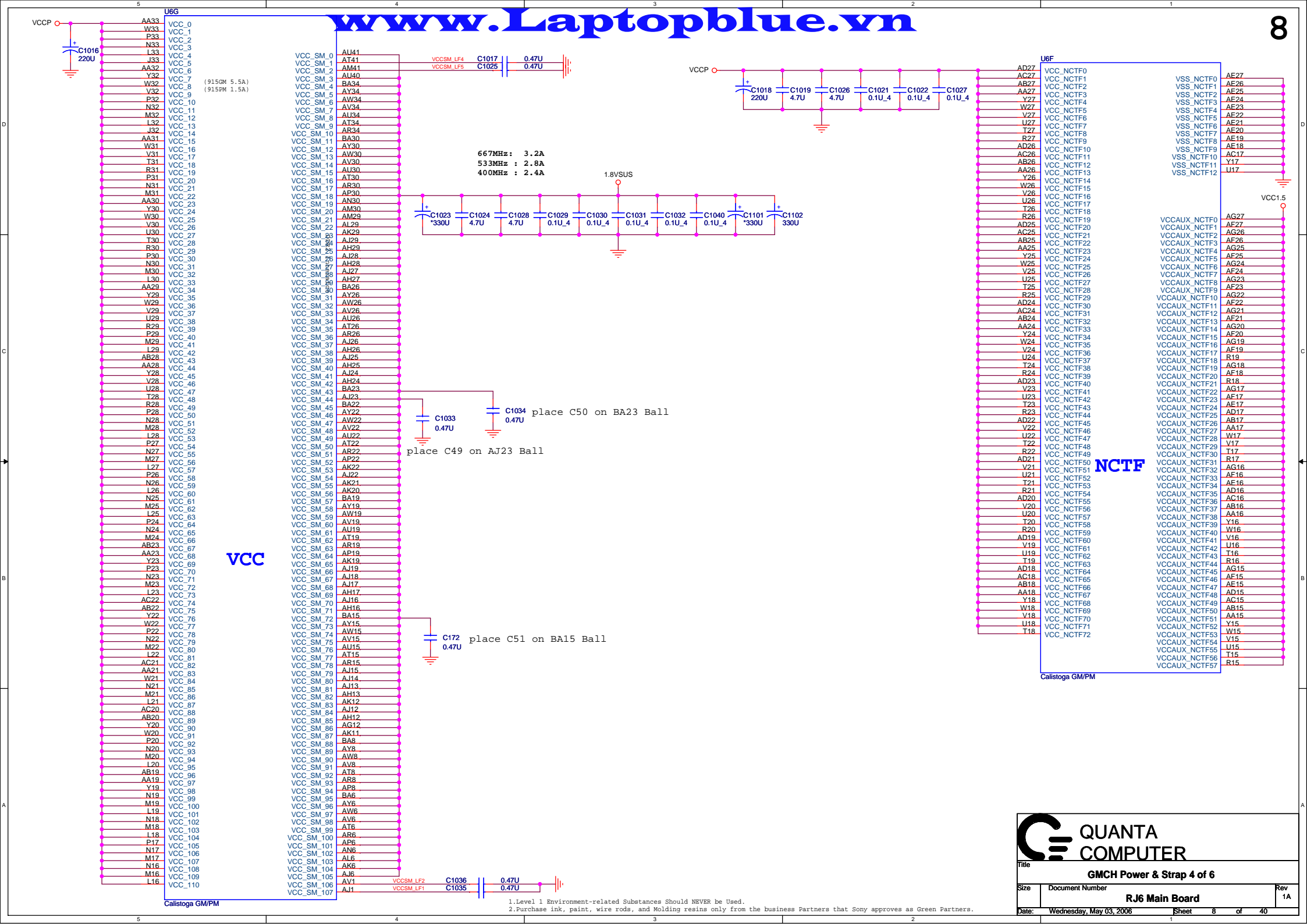


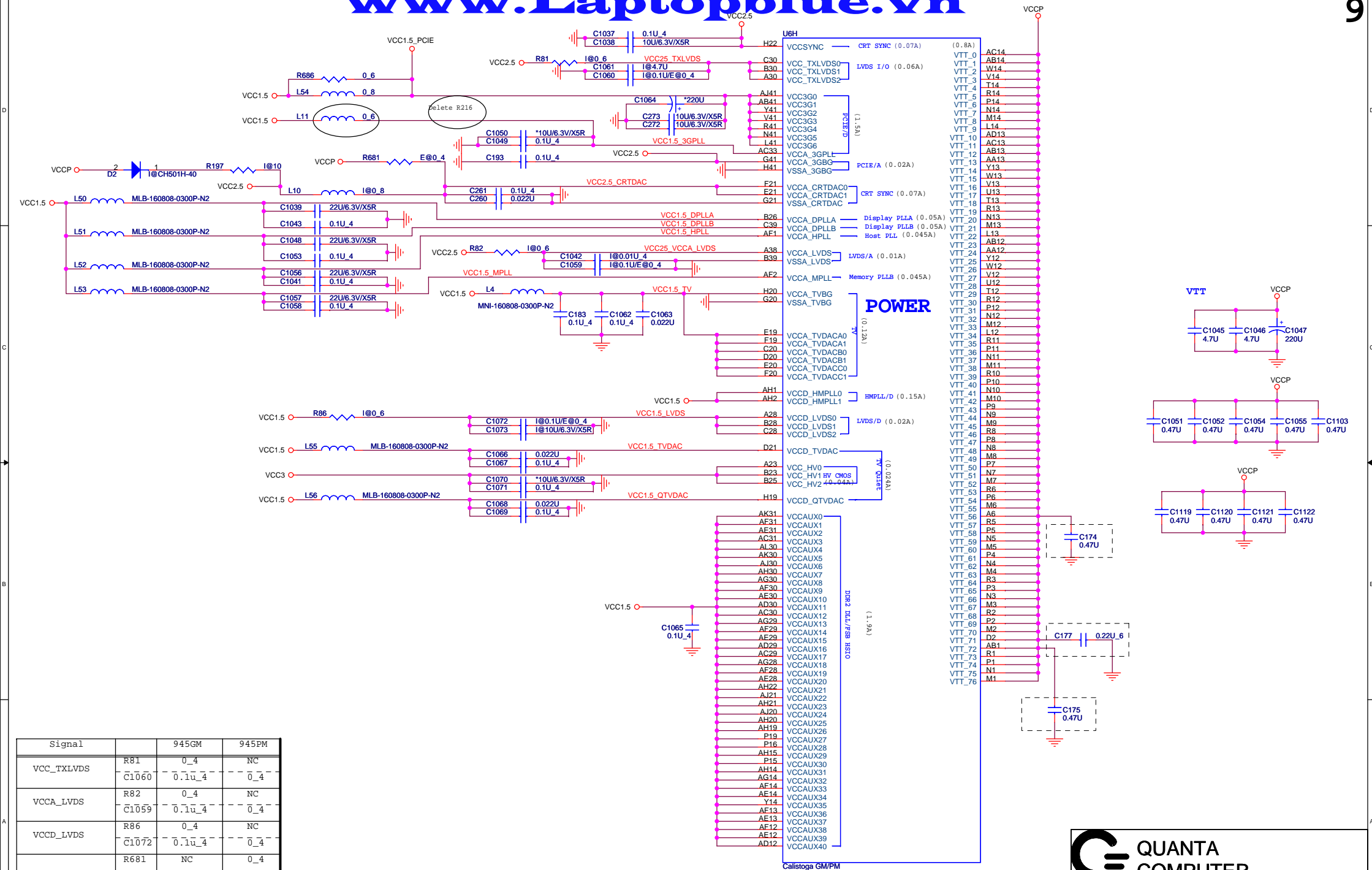
E@: 945PM (NI) should mount
I@: 945GM (NI) should mount
@: please refer to form
nearly

Signal		945GM	945PM
NB_VSYNC	R166	NI	0_4
	R155	39_4	NI
NB_HSYNC	R167	NI	0_4
	R157	39_4	NI
GFX	C133		0.1UF_4
	C164	NI	

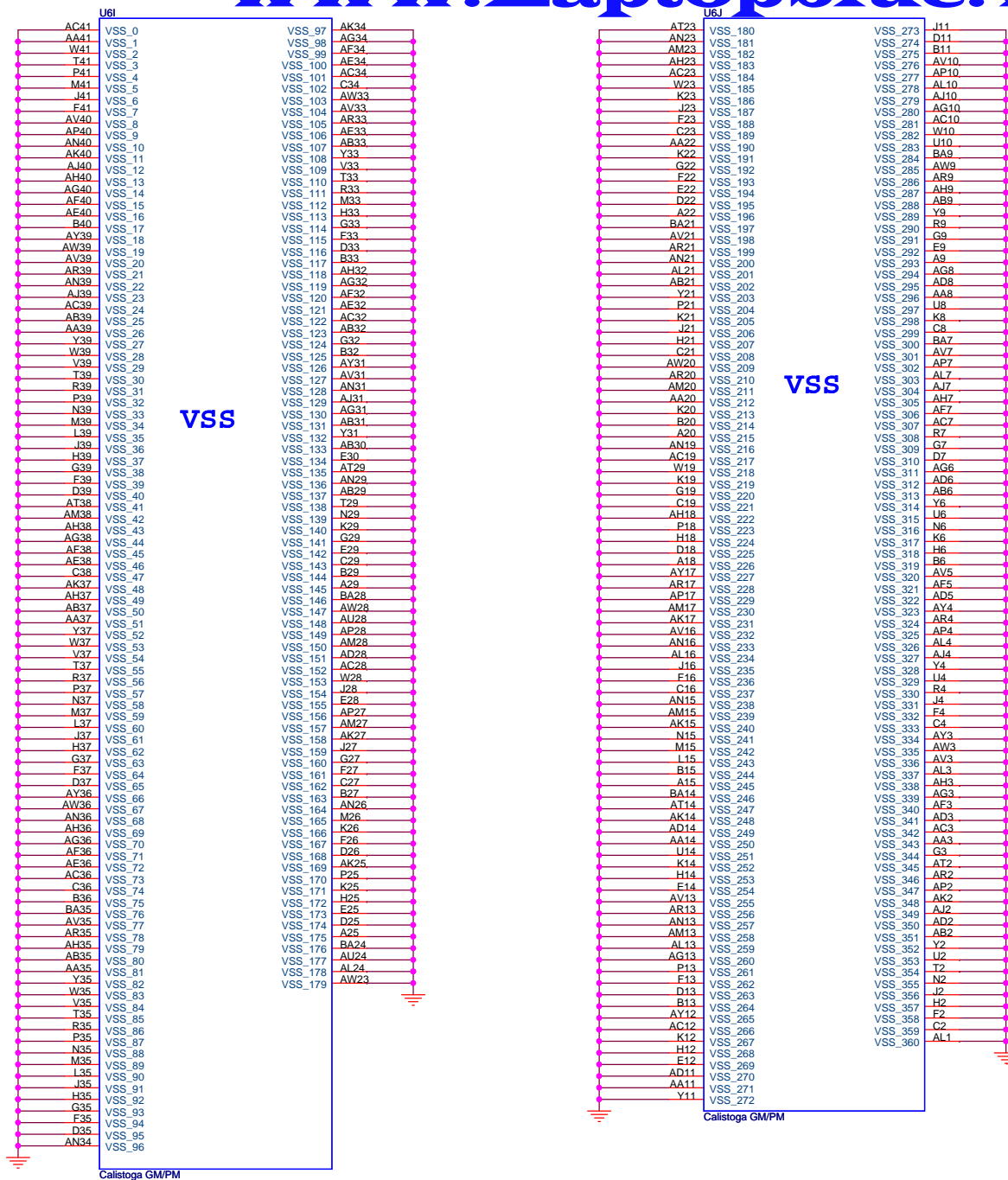
Signal		945GM	945PM
NB_B	R159	NI	0_4
	R148	0_4	NI
	R149	150_4	NI
NB_G	R160	NI	0_4
	R150	0_4	NI
	R151	150_4	NI
NB_R	R162	NI	0_4
	R152	0_4	NI
	R153	150_4	NI
CRT_COM#	R164	NI	0_4
	R163	0	NI
L_IBG	R605	1.5K/F_4	
LVDS	R169	0_4	NI
	R184	100K	NI
L_BKLT_EN	Q9	2N7002E	NI
L_CLKCTLA	R138	2.2K	NI
L_CLKCTLB	R604	10K	
LVDS_VDDEN	R483	0_4	NI
DDC2BC	R547	0_4	NI
DDC2BD	R548	0_4	NI
CRT_REST	R158	255	NI
	R165	NI	0

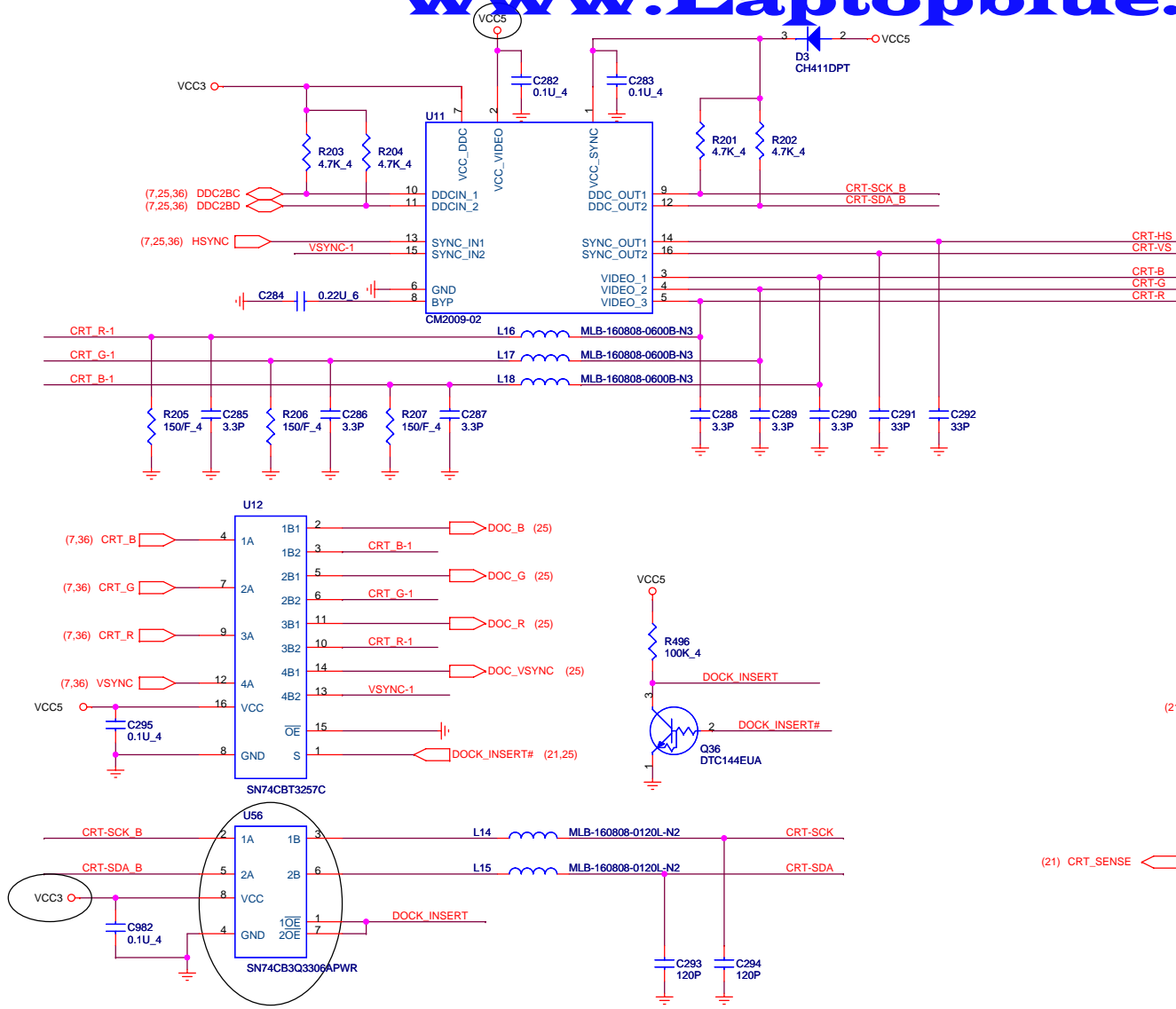






1. Level 1 Environment-related Substances Should NEVER be Used.
2. Purchase ink, paint, wire rods, and Molding resins only from the business Partners that Sony approves as Green Partners.



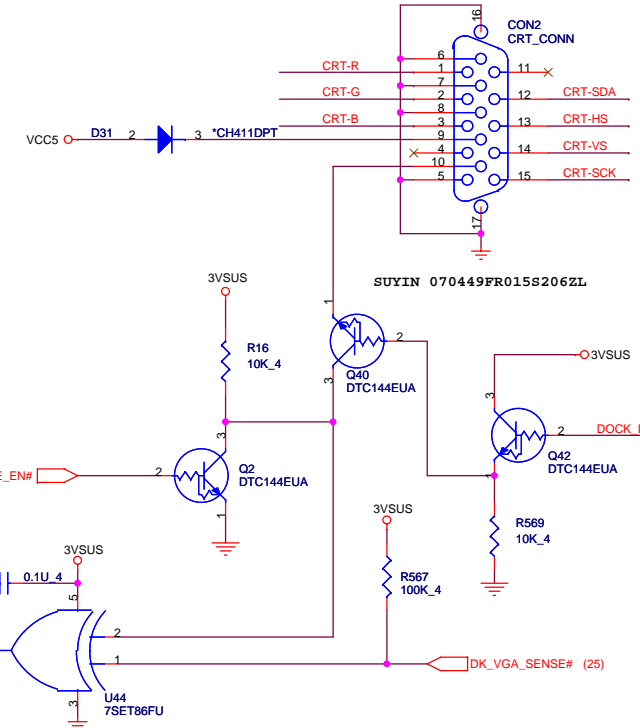


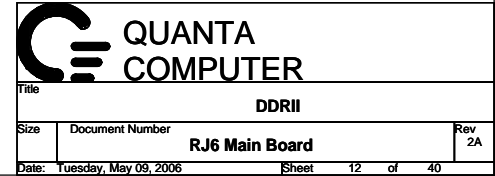
SN74CBT3257

OE	S	1A
H	H	L
H	L	H
L	H	H
L	L	L

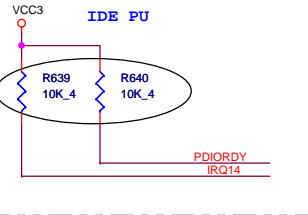
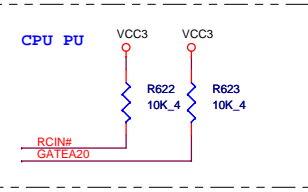
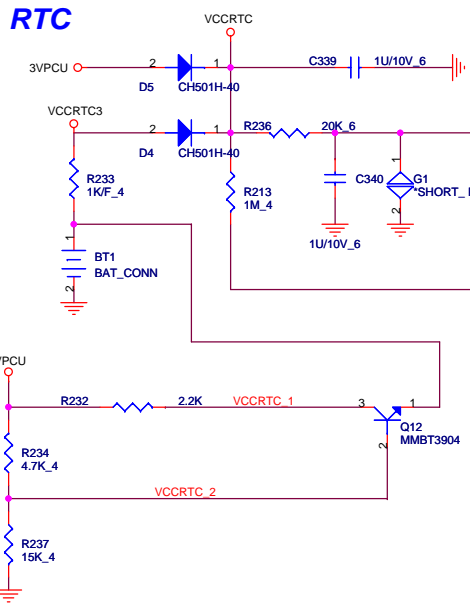
	SENSE_EN#	MB CRT	DOCK CRT	DOCK DVI	CRT_SENSE
All no Plug	L	H	H	L	L
MB CRT Plug	L	L	H	L	H
DOCK CRT Plug	L	H	L	L	H
DOCK DVI Plug	L	H	H	H	H
SENSE EN	H	X	X	X	L
DOCK CRT/DVI Plug	L	H	L	H	L
DOCK CRT/MB CRT Plug	L	L	L	L	L

1.Level 1 Environment-related Substances Should NEVER be Used.
2.Purchase ink, paint, wire rods, and Molding resins only from the business Partners that Sony approves as Green Partners.



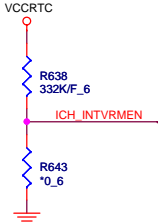


RTC

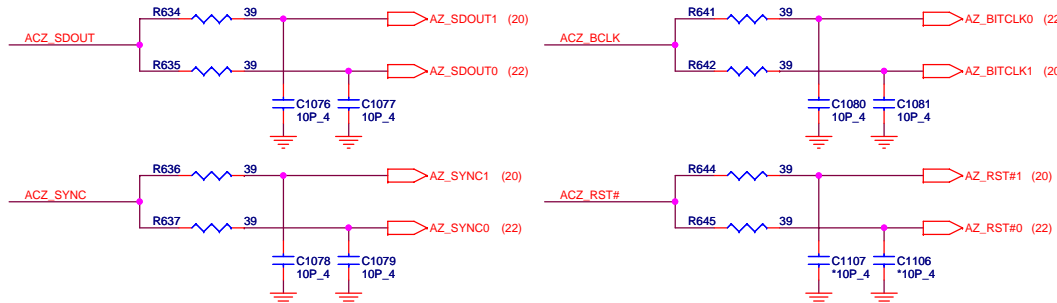


ICH7 internal VR enable strap

	INTVRMEN
Enable (default)	1
Disable	0

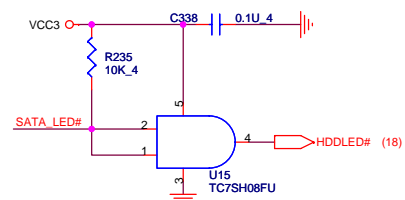


HD Audio to Codec and Modem



1.Level 1 Environment-related Substances Should NEVER be Used.
2.Purchase ink, paint, wire rods, and Molding resins only from the business Partners that Sony approves as Green Partners.

SATA LED



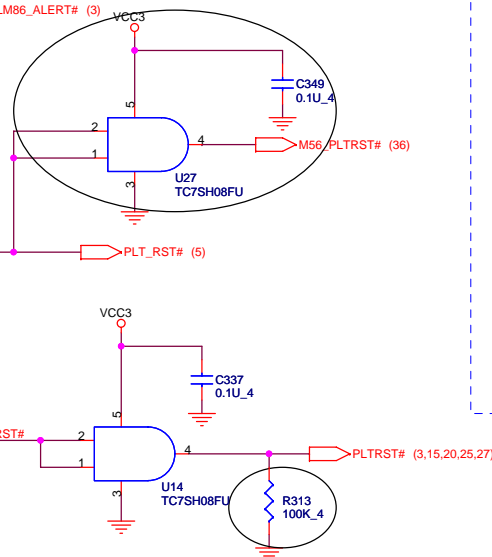
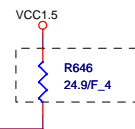
QUANTA COMPUTER

Title: ICH7-M HOST1 of 4

Size: Document Number: RJ6 Main Board Rev 2A

Date: Wednesday, May 03, 2006 Sheet 13 of 40


MINI PCIE



```

| PCI bus info.

```



QUANTA
COMPUTER

Title ICH7-M PCIE 2 of 4

Size	Document Number
------	-----------------

Size	Document Number	B 16 Main Bear
------	-----------------	-----------------------

	RJ6 Main Board
--	----------------

Date: Wednesday, May 03, 2006	Sheet
-------------------------------	-------

Rev	1
-----	---

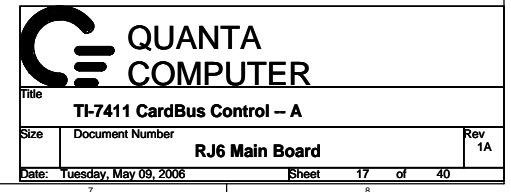
1. Level 1 Environment-related Substances Should NEVER be Used.
2. Purchase ink, paint, wire rods, and Molding resins only from the business Partners that Sony approves as Green Partners.

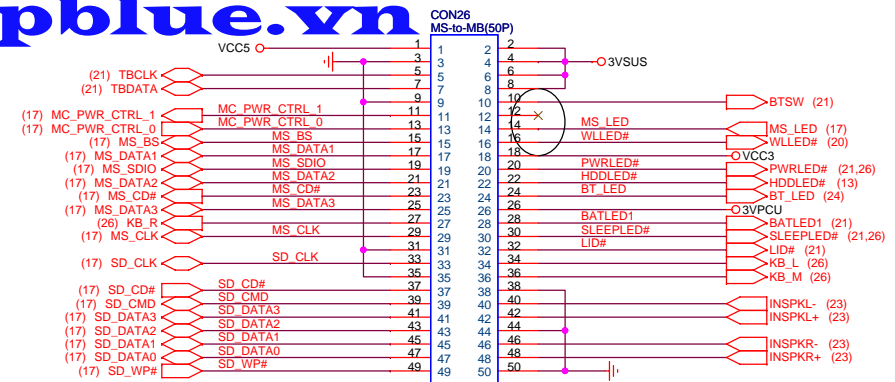
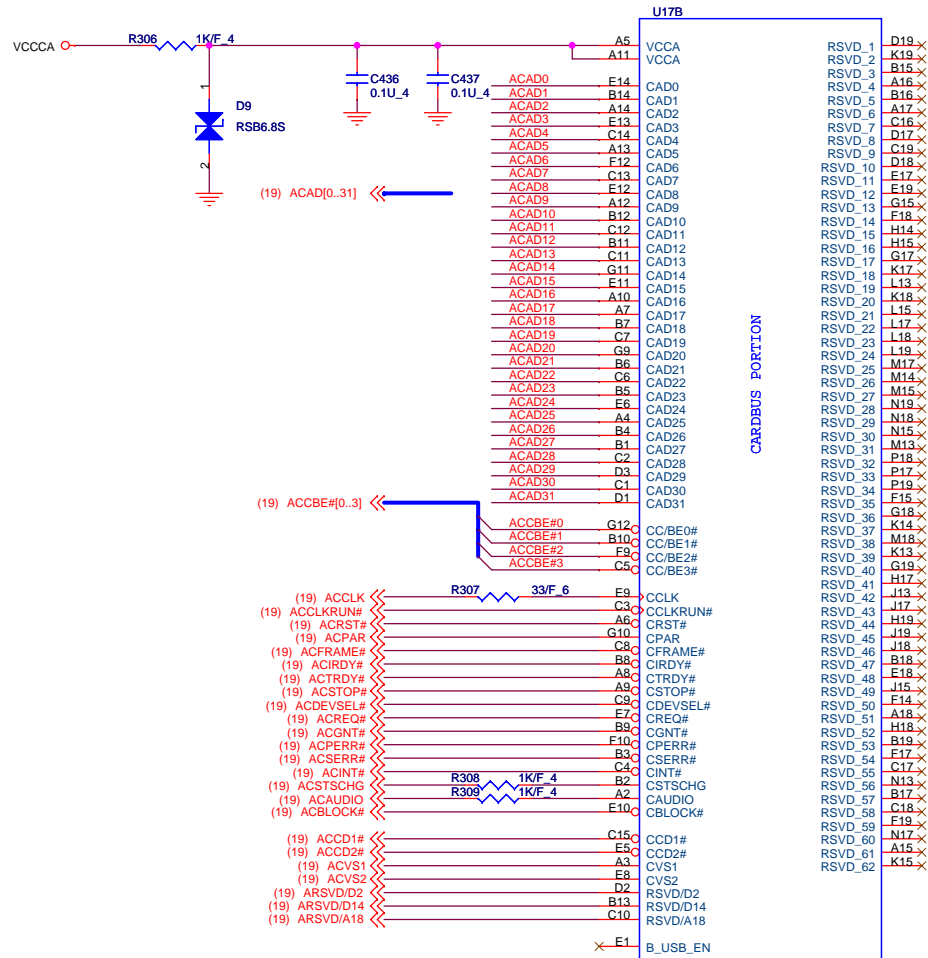


Size	Document Number	Rev
	RJ6 Main Board	2A

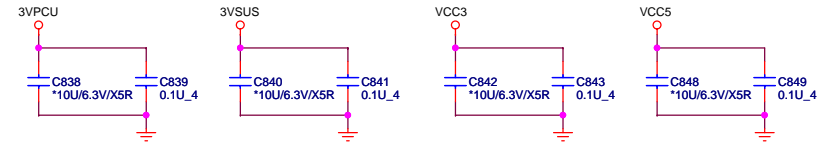
Date: Wednesday, May 03, 2006 Sheet 16 of 40

1. Level 1 Environment-related Substances Should NEVER be Used.
2. Purchase ink, paint, wire rods, and Molding resins only from the business Partners that Sony approves as Green Partners





ACES 88078-050xx-50p-ruv



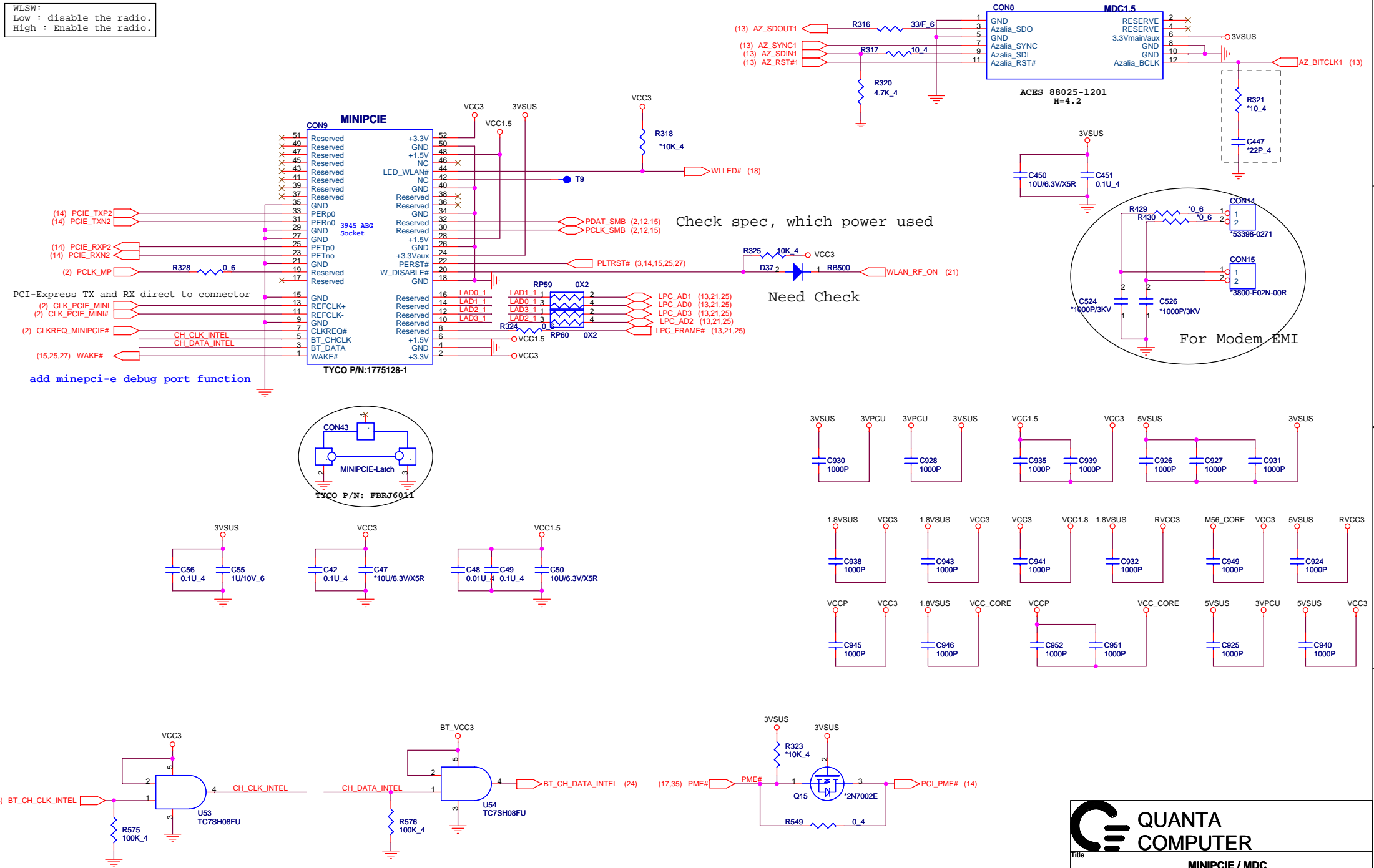
TI-7411 CardBus Control - B

Size Document Number RJ6 Main Board Rev 2A

Date: Tuesday, May 09, 2006 Sheet 18 of 40

LED_GP : LED WLEN LINK
Output Current : 7mA
Blink rate : 1 flash per every 3 sec.

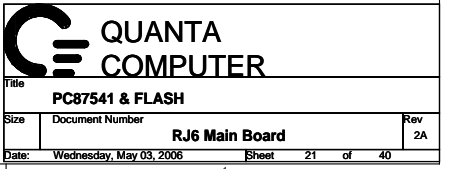
WLSW:
Low : disable the radio.
High : Enable the radio.

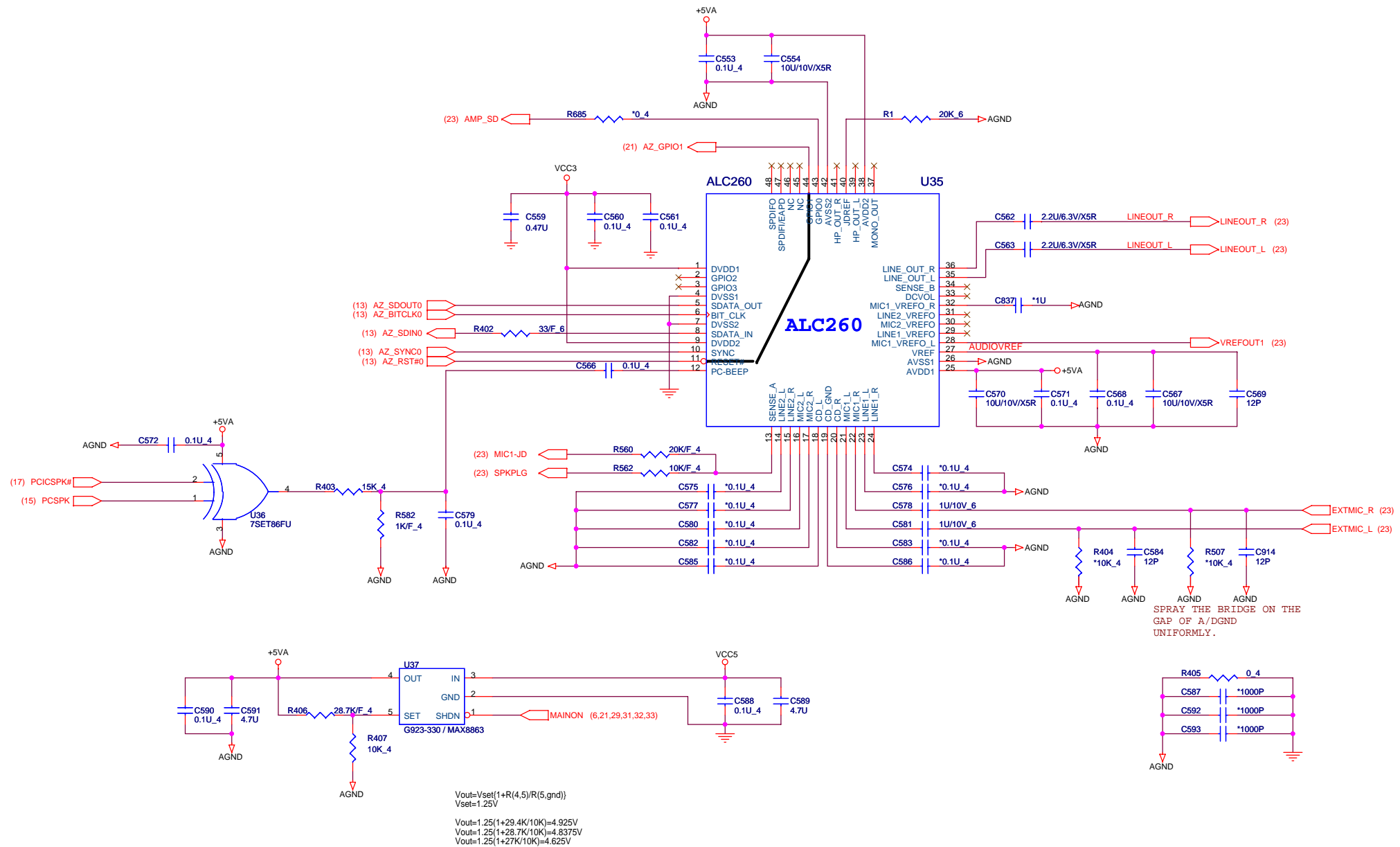


1. Level 1 Environment-related Substances should NEVER be Used.
2. Purchase ink, paint, wire rods, and Molding resins only from the business Partners that Sony approves as Green Partners.

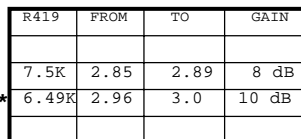
QUANTA COMPUTER

Title: MINIPICIE / MDC		
Size	Document Number	Rev 2A
RJ6 Main Board		
Date: Wednesday, May 03, 2006	Sheet 20	of 40





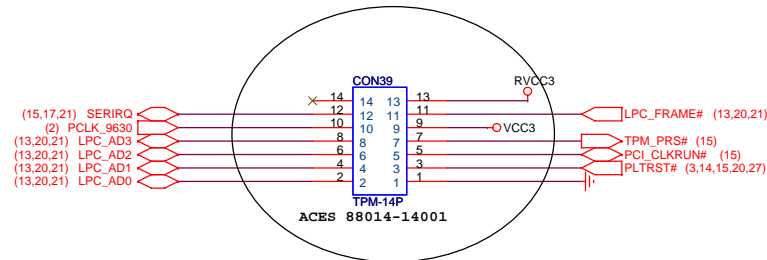
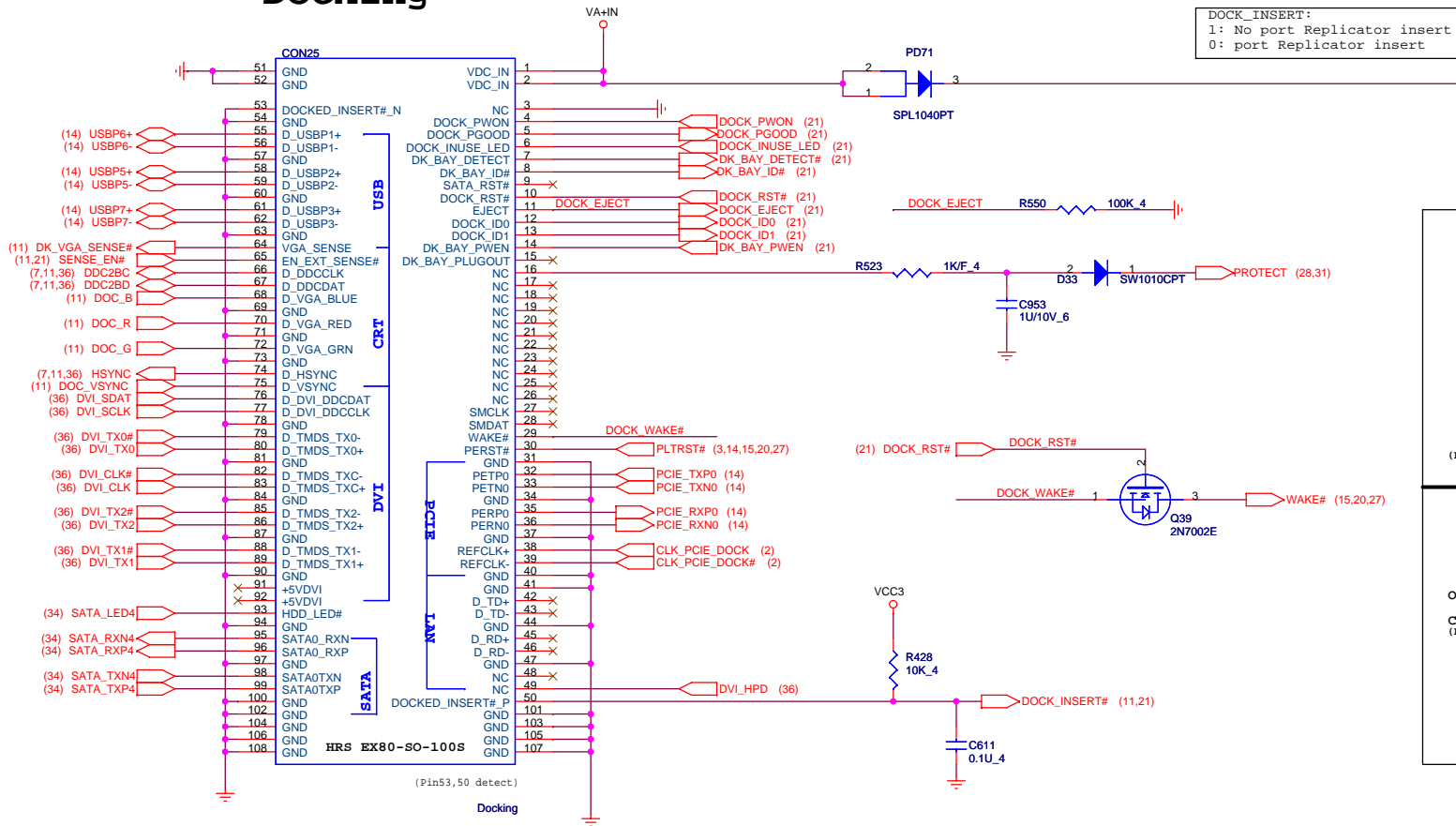
1.Level 1 Environment-related Substances Should NEVER be Used.
 2.Purchase ink, paint, wire rods, and Molding resins only from the business Partners that Sony approves as Green Partners.

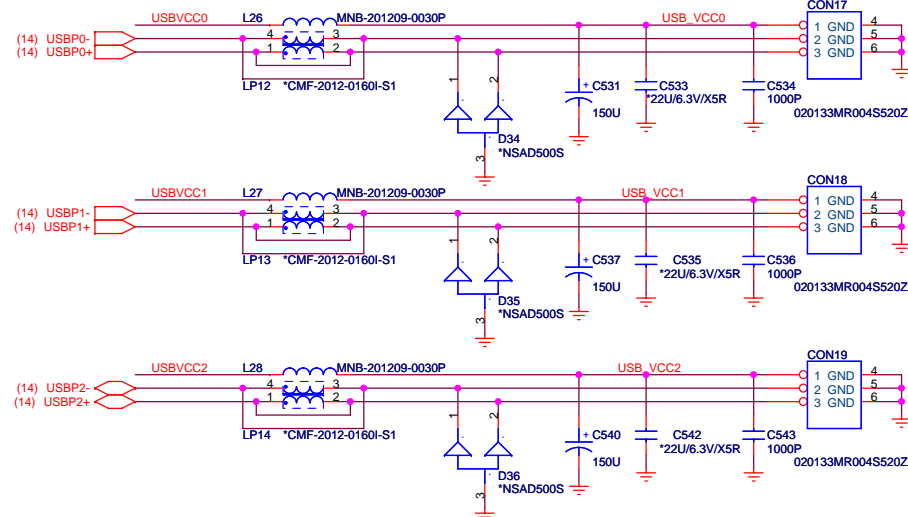
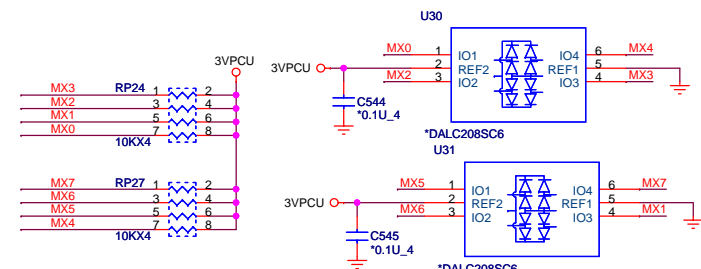
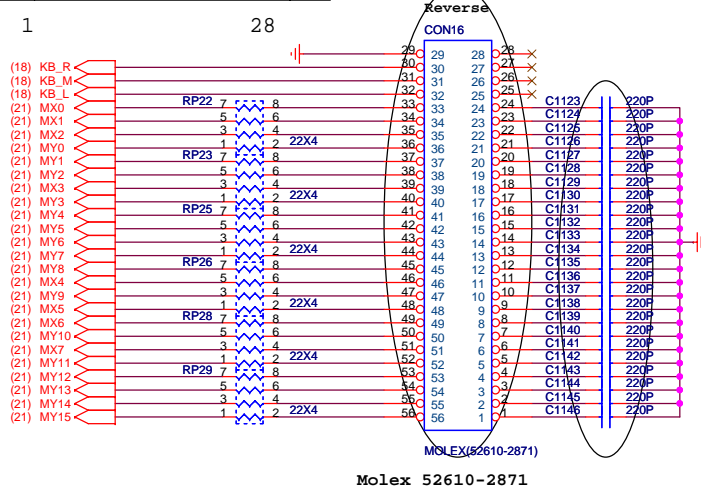
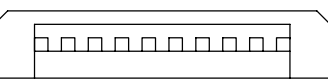


QUANTA
COMPUTER

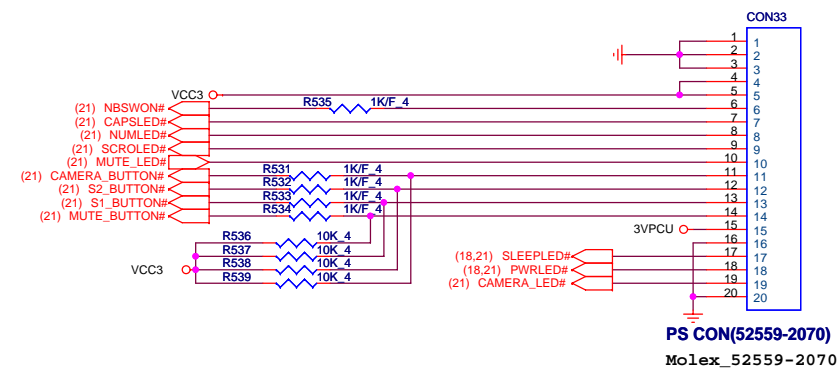
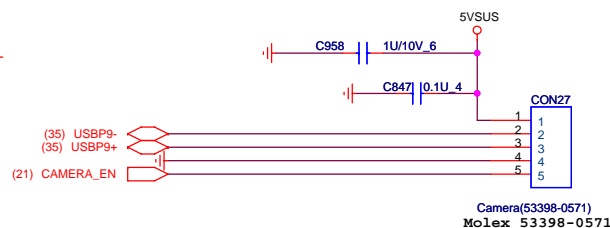
Date: Tuesday, May 09, 2006 Sheet 23 of 40

Docking

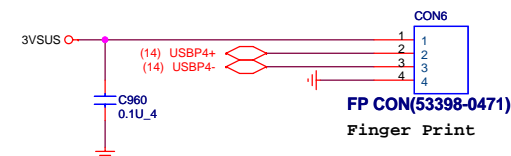
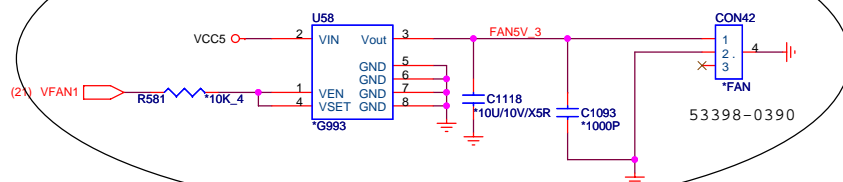


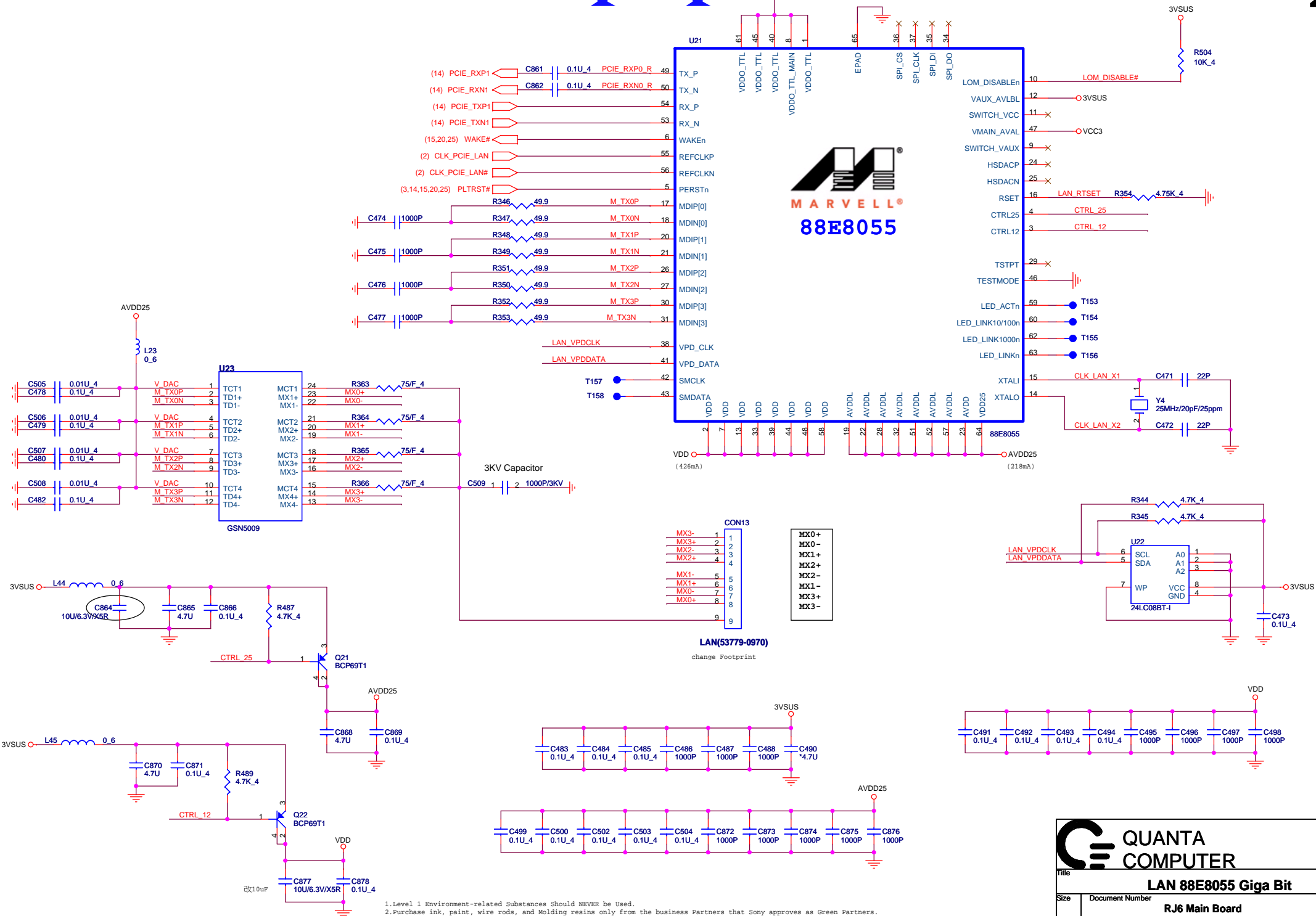


USB Camera

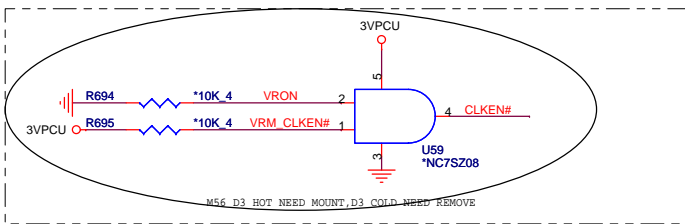
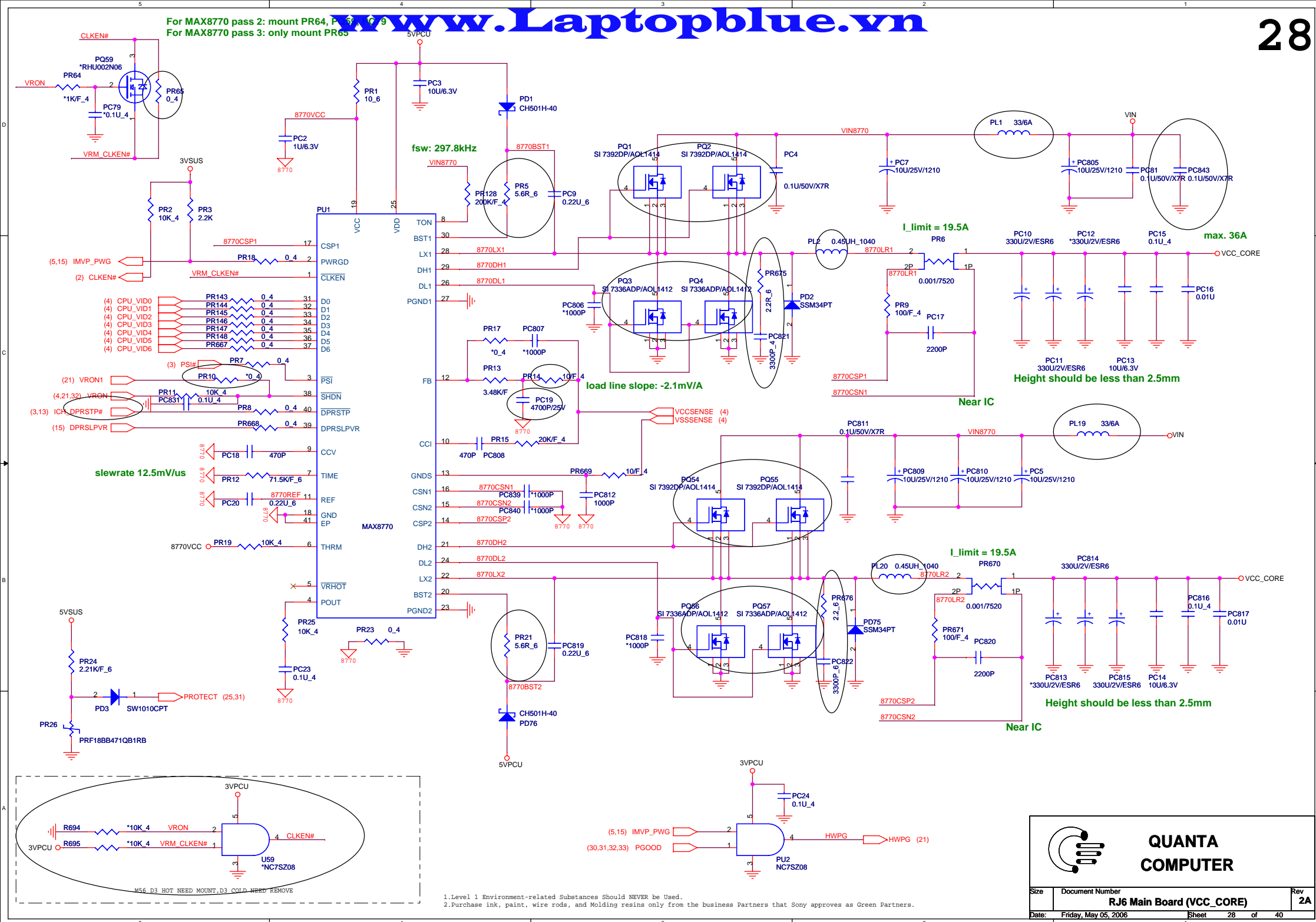


2nd FAN UNIT

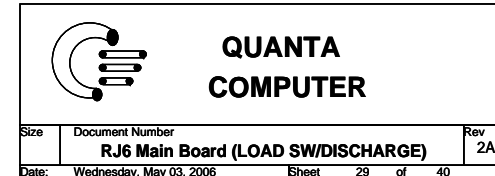




For MAX8770 pass 2: mount PR64, P 3, 6, 9
For MAX8770 pass 3: only mount PR65

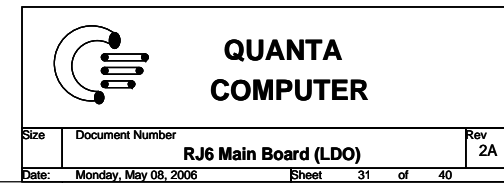
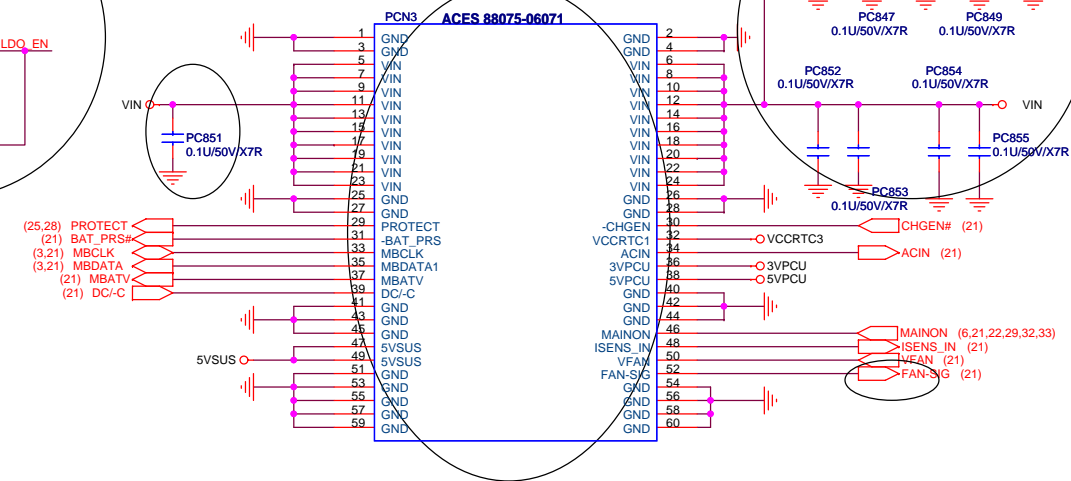
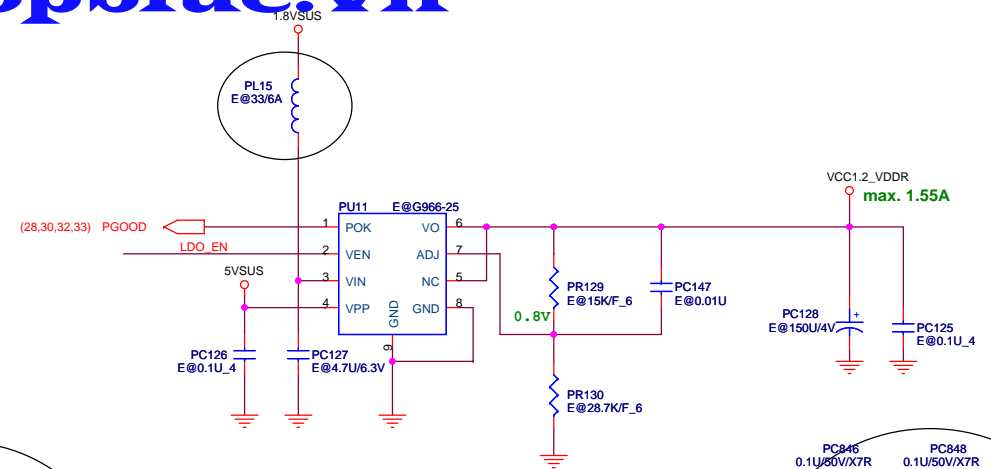


1.Level 1 Environment-related Substances Should NEVER be Used.
2.Purchase ink, paint, wire rods, and Molding resins only from the business Partners that Sony approves as Green Partners.

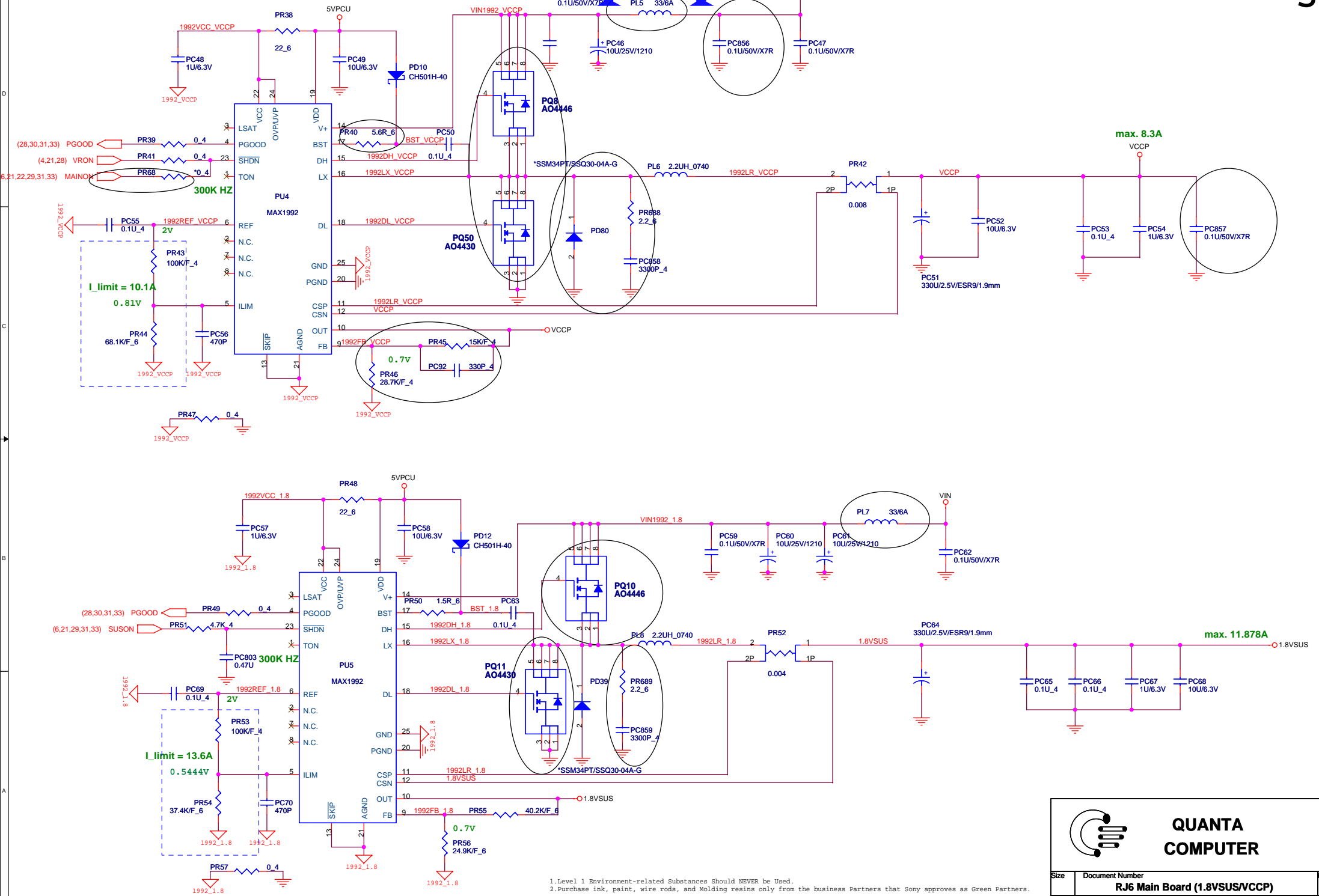




Size	Document Number	Rev
	RJ6 Main Board (5V/3V/12V)	1B
Date:	Friday, May 05, 2006	Sheet 30 of 40



1. Level 1 Environment-related Substances Should NEVER be Used.
2. Purchase ink, paint, wire rods, and Molding resins only from the business Partners that Sony approves as Green Partners.

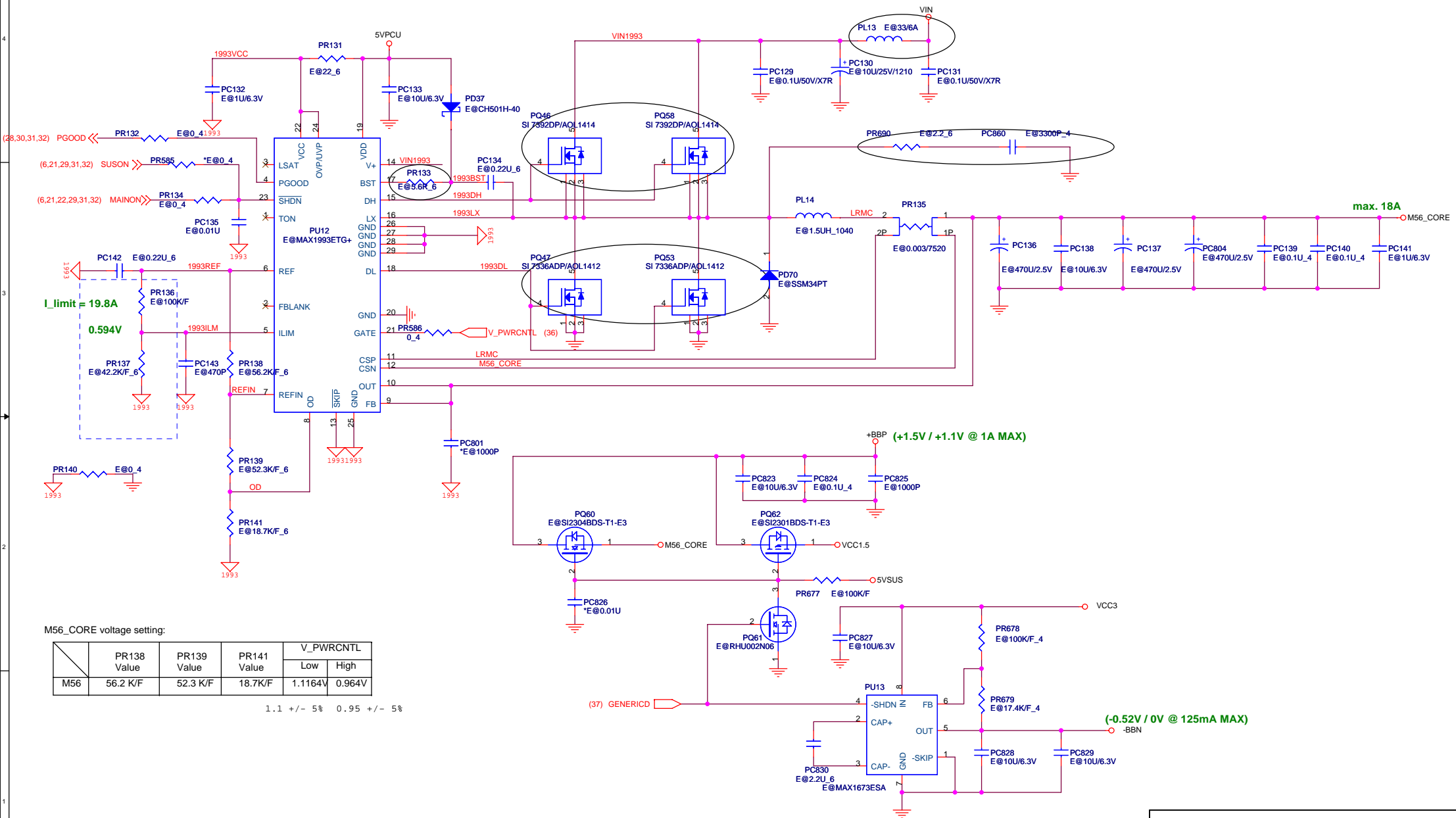


1.Level 1 Environment-related Substances Should NEVER be Used.
2.Purchase ink, paint, wire rods, and Molding resins only from the business Partners that Sony approves as Green Partners.

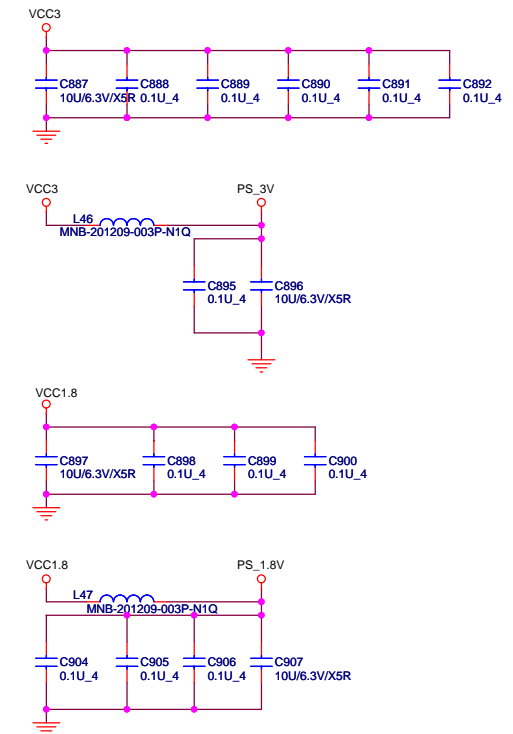


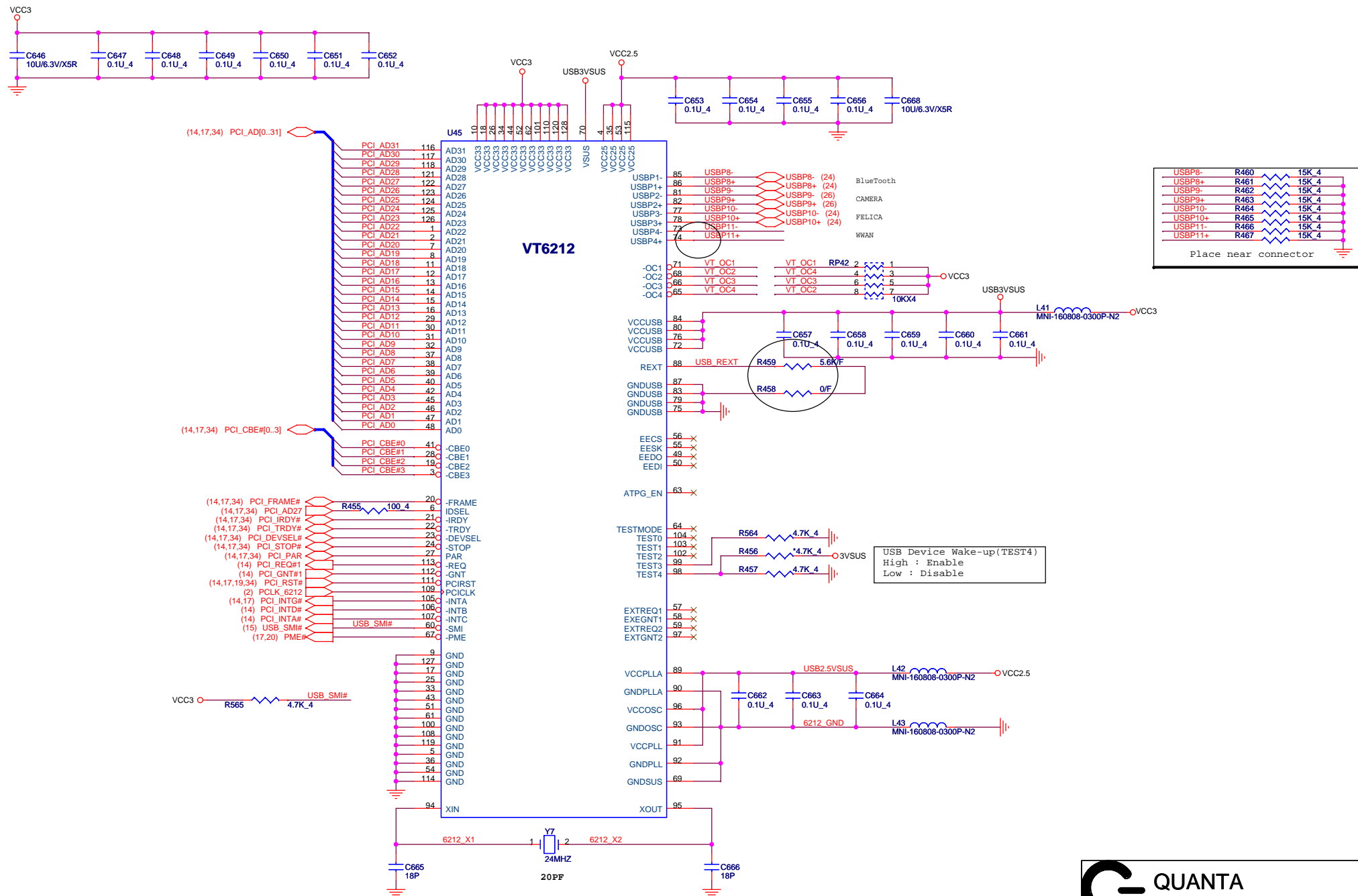
**QUANTA
COMPUTER**

Size	Document Number	Rev
	RJ6 Main Board (1.8VSUS/VCCP)	1B
Date:	Wednesday, May 03, 2006	Sheet 32 of 40



**QUANTA
COMPUTER**



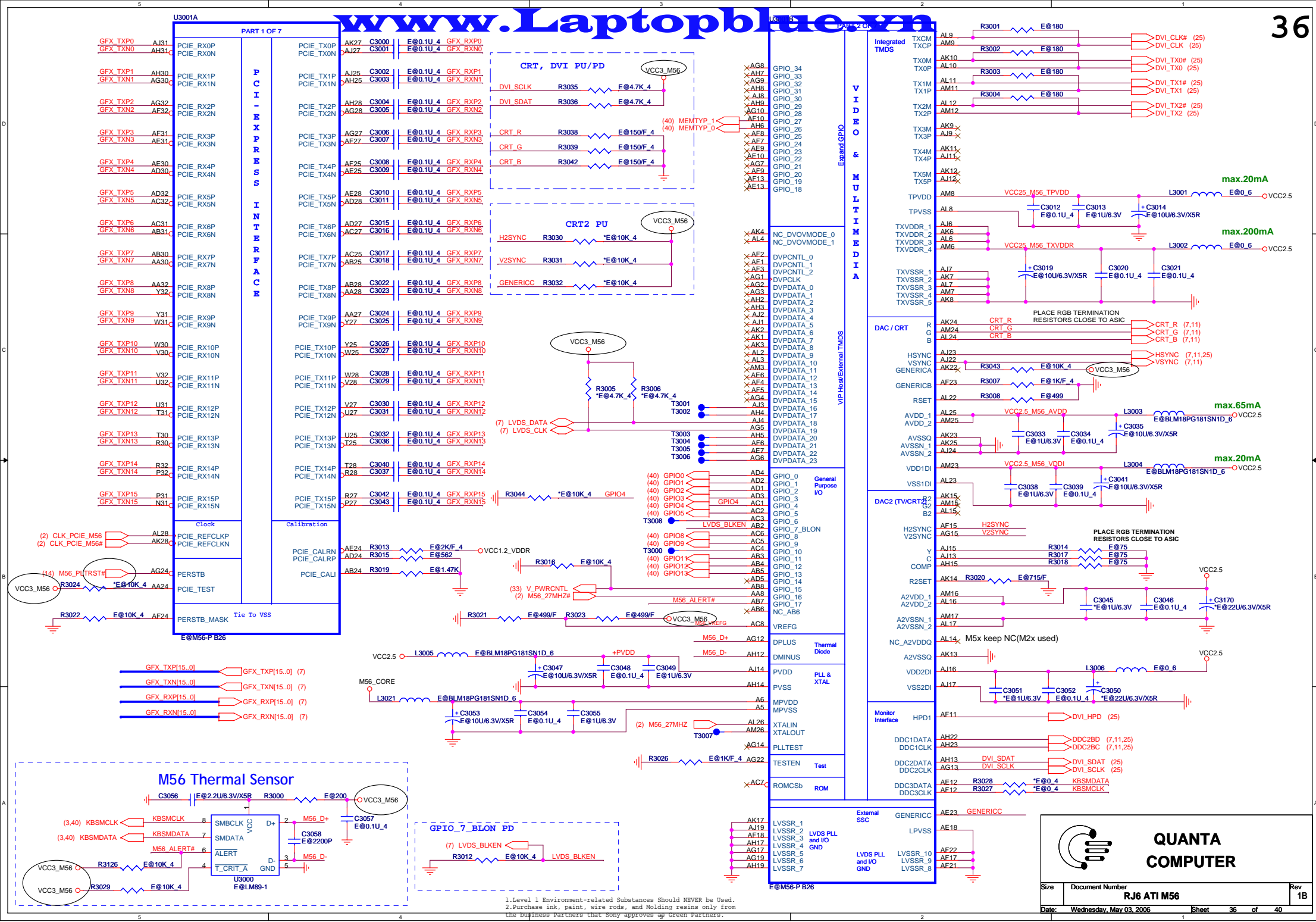


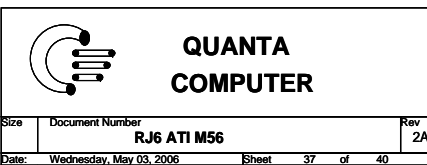
1. Level 1 Environment-related Substances Should NEVER be Used.
2. Purchase ink, paint, wire rods, and Molding resins only from the Business Partners that Sony approves as Green Partners.

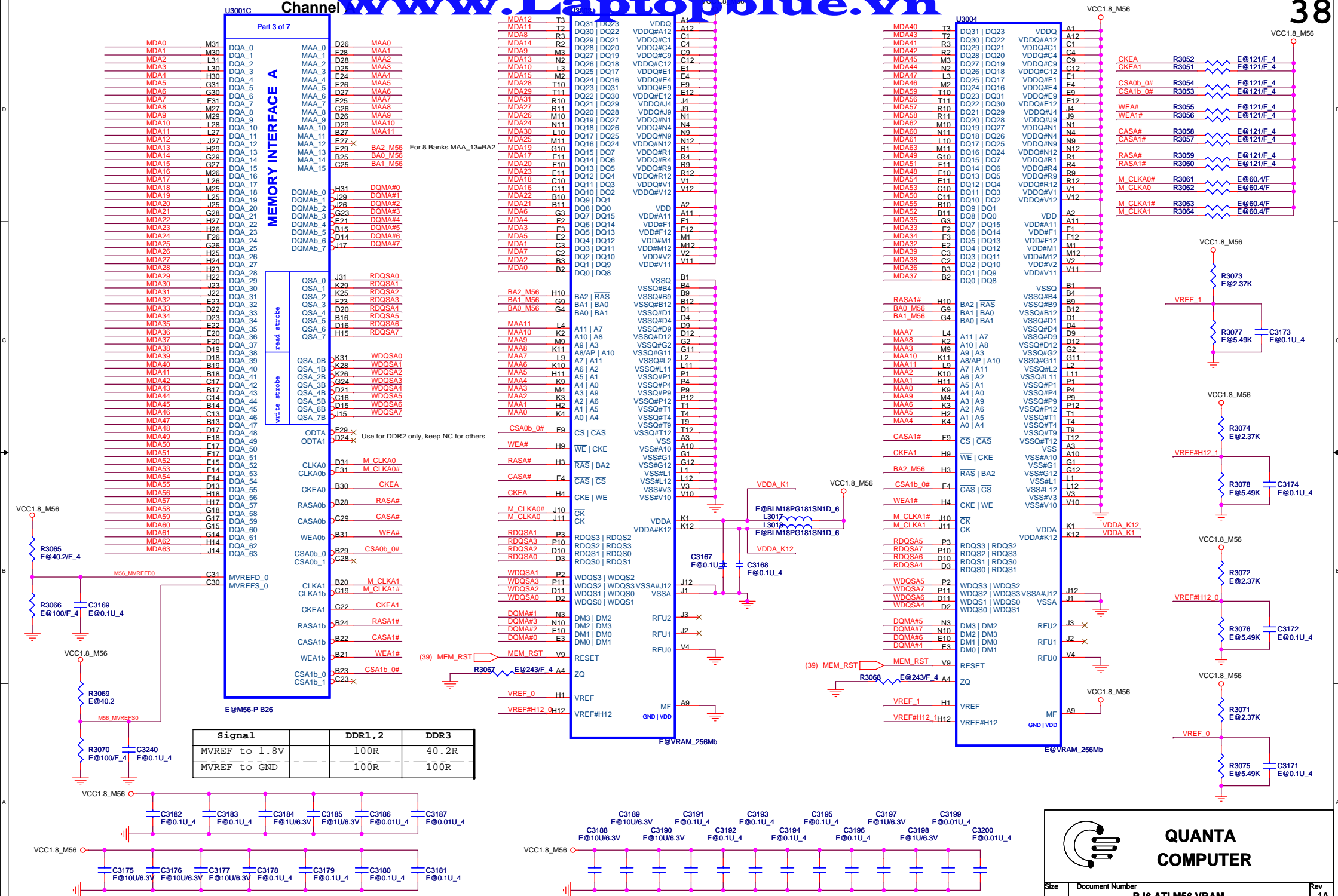
QUANTA COMPUTER

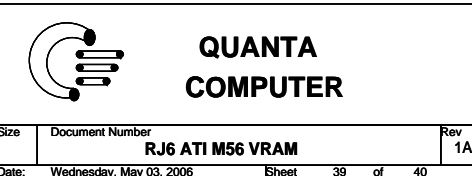
USB Controller VT6212

Size Custom Document Number **RJ6 Main Board** Rev 2A
Date: Tuesday, May 09, 2006 Sheet 35 of 40



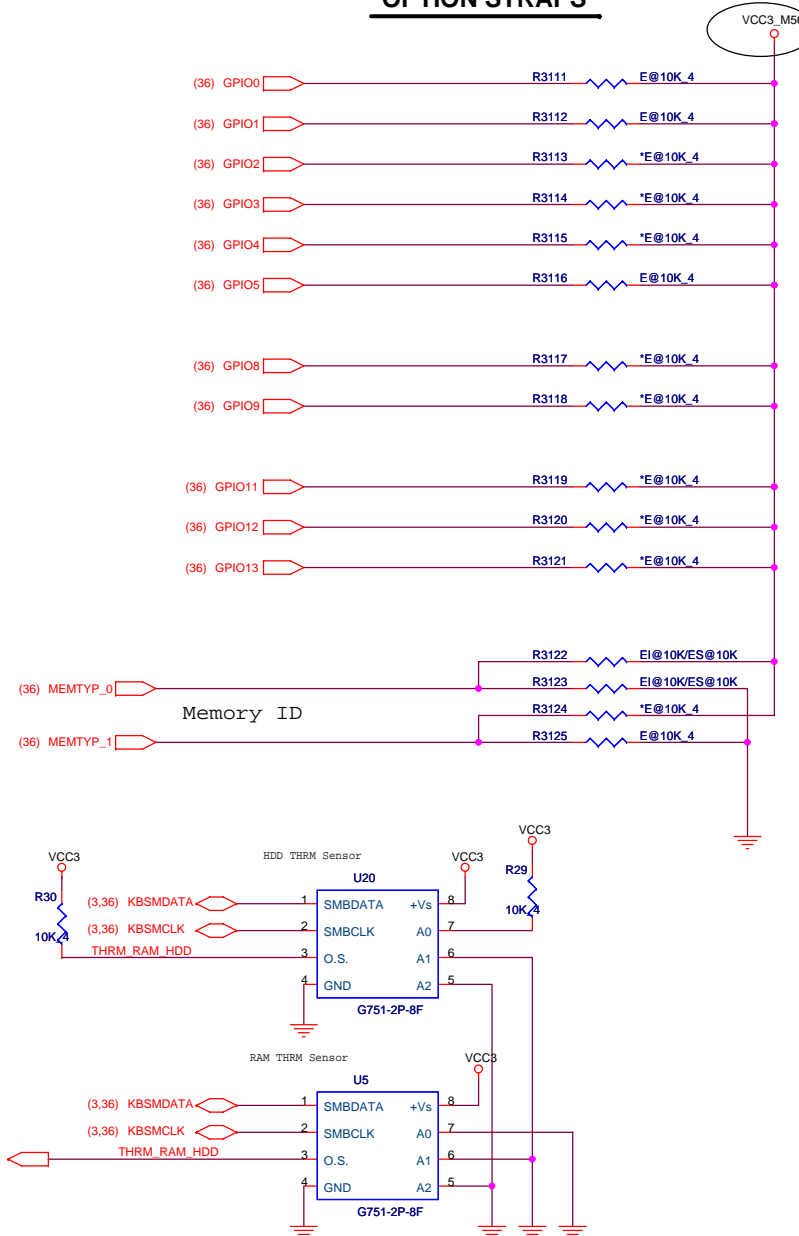






OPTION STRAPS

M56-P Strap



STRAPS	PIN	DESCRIPTION	ASIC DEFAULT
TX_PWRS_ENB	GPIO0	Transmitter Power Savings Enable 0: 50% Tx output swing 1: full Tx output swing	0 (internal pull-down)
TX_DEEMPH_EN	GPIO1	(recommended) Transmitter De-emphasis Enable 0: Tx de-emphasis disabled 1: Tx de-emphasis enabled	0 (internal pull-down)
Reserved	GPIO(3:2)	(recommended) ATI internal use only. Other logic must not affect this signal during RESET.(GPIO2=VDD_VCL)	00
DEBUG_ACCESS	GPIO4	Strap to set the debug muxes to bring out DEBUG signals even if registers are inaccessible	0 (internal pull-down)
PLL_IBIAS_RD	GPIO[6:5]	Bias Current for the PCI Express PHY PLL	01
Reserved	GPIO8	ATI internal use only. Other logic must not affect this signal during RESET.(Serial ROM Output from ROM)	0
ROMIDCFG(3:0)	GPIO(9,13:11)	If no ROM attached, controls chip IDis. If rom attached identifies ROM type 000x - No ROM, MEM_AP_SIZE=00 128MB(Default) 001x - No ROM, MEM_AP_SIZE=01 256MB 010x - No ROM, MEM_AP_SIZE=10 64MB 011x - No ROM, MEM_AP_SIZE=11 Reserved 1000 - Parallel ROM, chip IDis from ROM 1001 - Serial AT25F1024 ROM (Atmel), chip IDis from ROM 1010 - Serial AT45DB011 ROM (Atmel), chip IDis from ROM 1011 - Serial M25P10 ROM (ST), chip IDis from ROM 1100 - Serial M25P05 ROM (ST), chip IDis from ROM 1100 - Serial NX25F011B ROM (ISSI), chip IDis from ROM	GPIO[9,13,12,11] 0000 (internal pull-down)
VIP_DEVICE	VSYNC	Indicates if any slave VIP host devices drove this pin low during reset. 0- Slave VIP host port device present. 1-No slave VIP port devices reporting presence during reset	0 (internal pull-down)
Reserved	PCIE_TEST	ATI internal use only. Other logic must not affect this signal during RESET.(Serial ROM Output from ROM)	0
Reserved	HSYNC	ATI internal use only. Other logic must not affect this signal during RESET.(Serial ROM Output from ROM)	0

VRAM Straps

REV. 0.1

STRAPS	PIN	DESCRIPTION	VALUE
MEMTYPE[1:0]	GPIO 27,26	Memory identification for BIOS 00 - Infineon GDDR3 : 2M x 32 bits x 4 banks(Default) 01 - SAMSUNG GDDR3 : 2M x 32 bits x 4 banks 10 - TBD 11 - TBD	00



**QUANTA
COMPUTER**