

R44: (Pin 26,27)
 1: Clock from SARA PLL
 0: Clock from RC PLL
 R4: (Pin 17,18)
 1: SRCCLK0 pair
 0: 17,18 pin is set by R6
 R6: (Pin 17,18)
 1: LCDCLK pair
 0: 27MHZSS/27MHZSS# pair

96MHz SST Table :

S3	S2	S1	S0	Spread	Type
0	0	0	0	0.8	Down
0	0	0	1	1	
0	0	1	0	1.25	
0	0	1	1	1.5	
0	1	0	0	1.75	
0	1	0	1	2	
0	1	1	0	2.5	
0	1	1	1	3	
1	0	0	0	+/-0.3	Center
1	0	0	1	+/-0.4	
1	0	1	0	+/-0.5	
1	0	1	1	+/-0.6	
1	1	0	0	+/-0.8	
1	1	0	1	+/-1.0	
1	1	1	0	+/-1.25	
1	1	1	1	+/-1.5	

FSC BSEL0	FSB BSEL1	FSA BSEL2	CPU	SRC	PCI	REF	USB	DOT
0	0	0	266.66	100	33.33	14.318	48	96
* 0	0	1	133.33	100	33.33	14.318	48	96
0	1	0	200.00	100	33.33	14.318	48	96
0	1	1	166.66	100	33.33	14.318	48	96
1	0	0	333.33	100	33.33	14.318	48	96
* 1	0	1	100.00	100	33.33	14.318	48	96
1	1	0	400.00	100	33.33	14.318	48	96
1	1	1	RESERVE			14.318	48	96

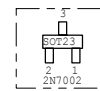
ICS 954227 : Include SST

ICS 954227 Function:
 Pin 53 : REF1
 Pin 17,18 : 96MHz_SST

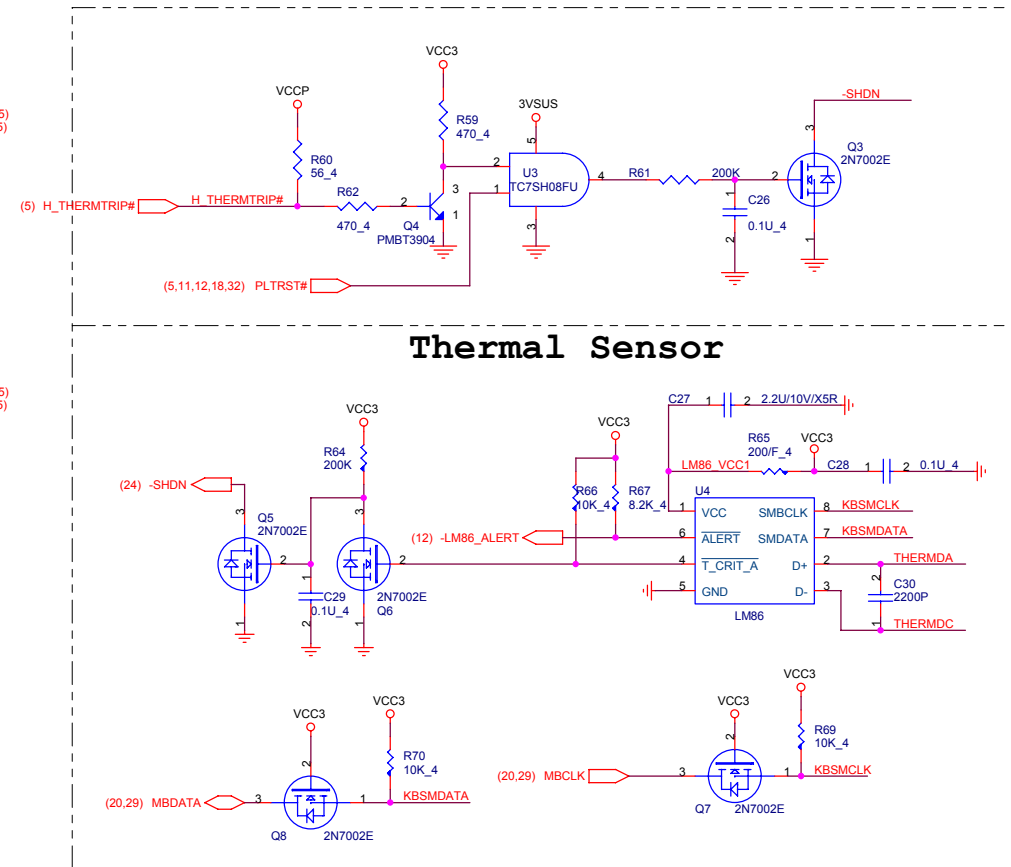
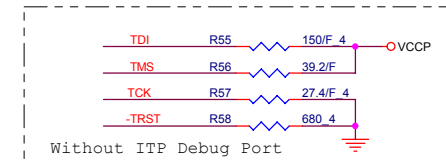
ITP_EN Function (Pin 8)

0 : SRC_7 Pair (Pin 35,36)
 1 : CPU_2_IPT Pair (Pin 35,36)

IREF (Pin 39) :
 475_1% : Sets the IREF current to 2.32mA

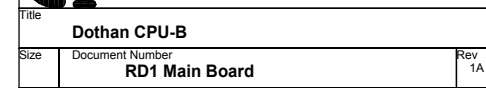


1. This part should not contain any substances which are specified in SS-00259-1
 2. Purchase ink, paint, wire rods and molding resins only from the business partners that Sony approves as Green Partners.

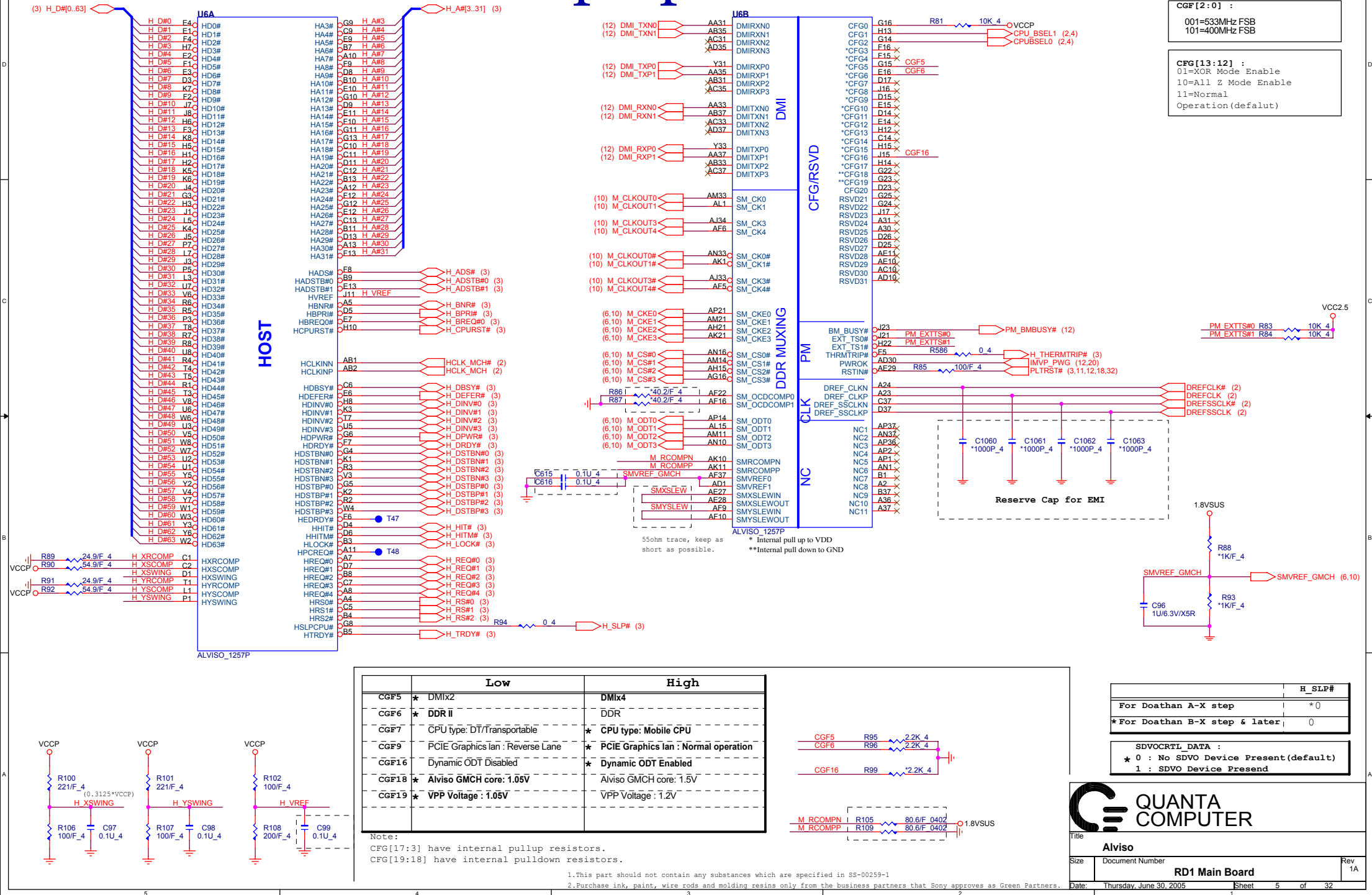


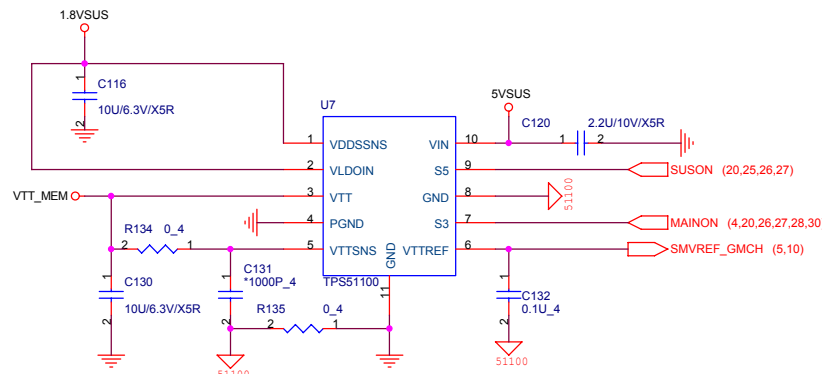
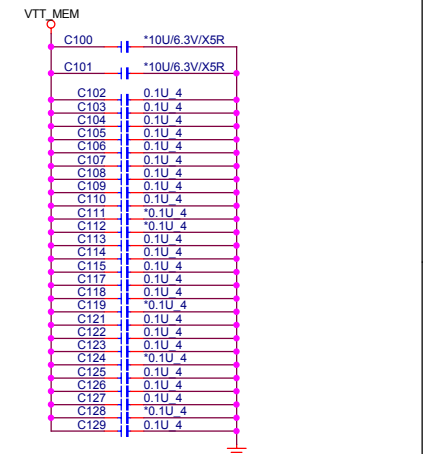
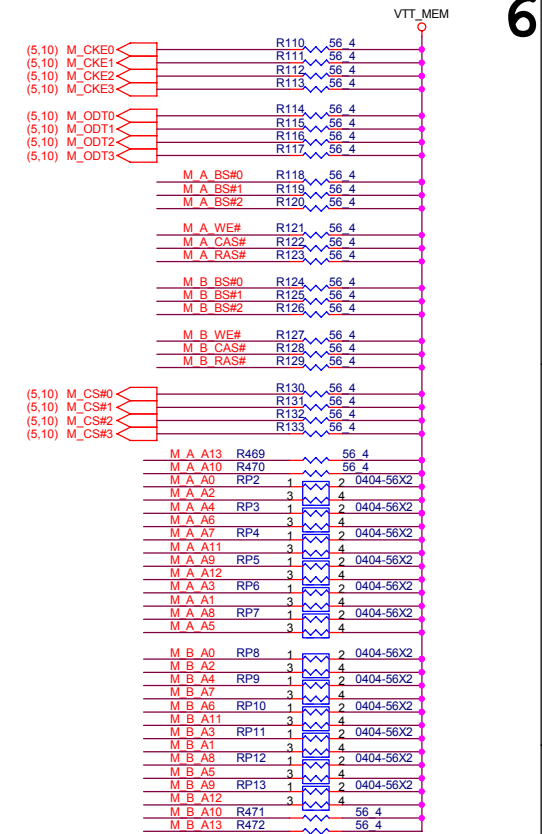
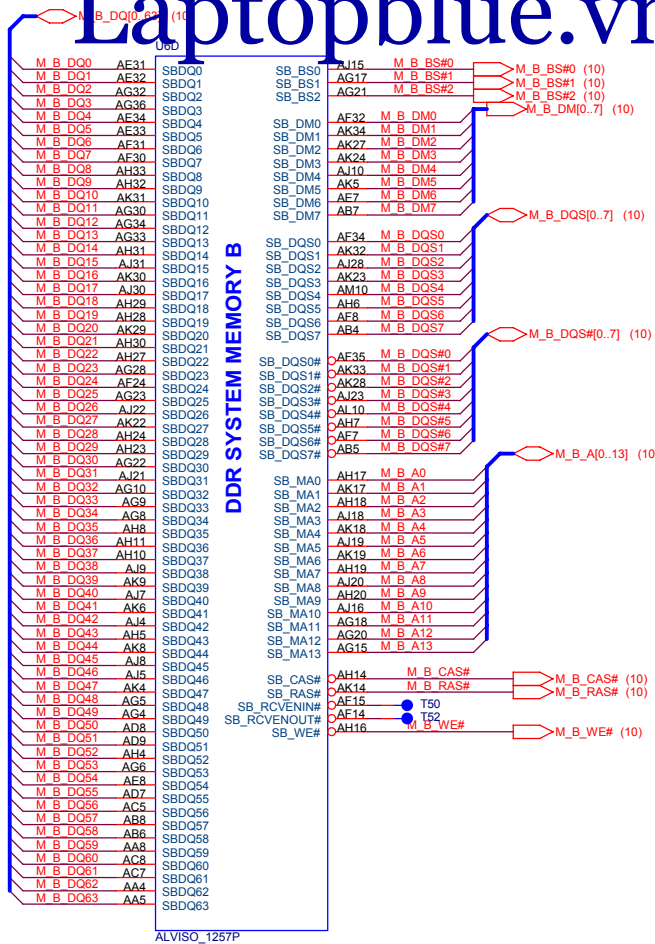
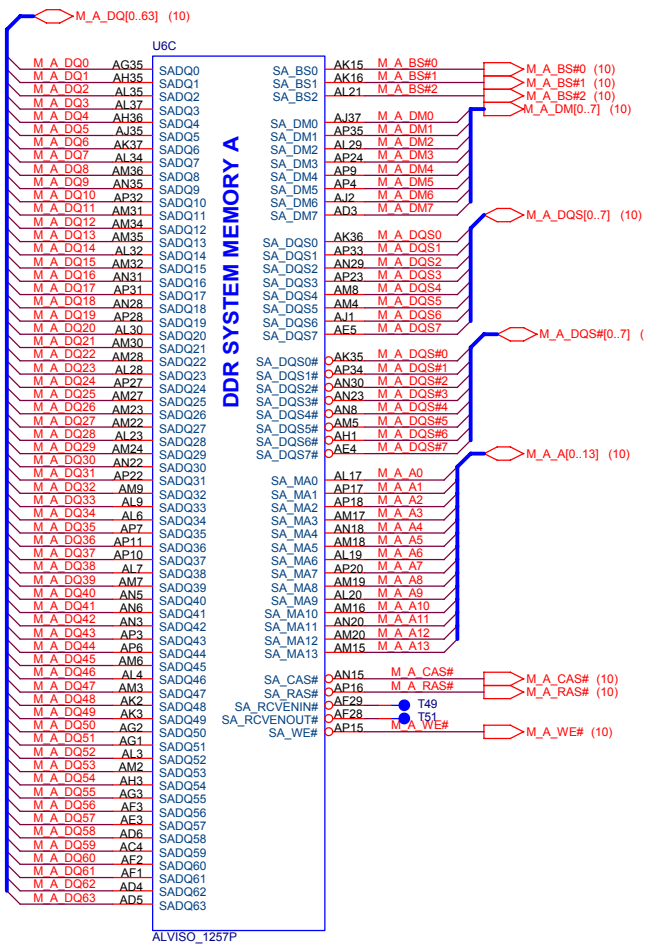
Title			
Dothan CPU - A			
Size	Document Number	Rev	
Custom	RD1 Main Board	1A	
Date:	Thursday, June 30, 2005	Sheet	3 of 32

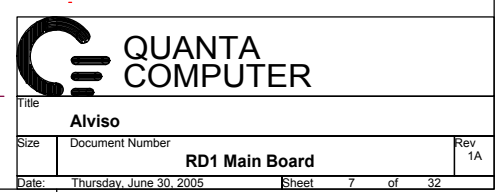
Dothan



2. Purchase ink, paint, wire rods and molding resins only from the business partners that Sony approves as Green Partners.

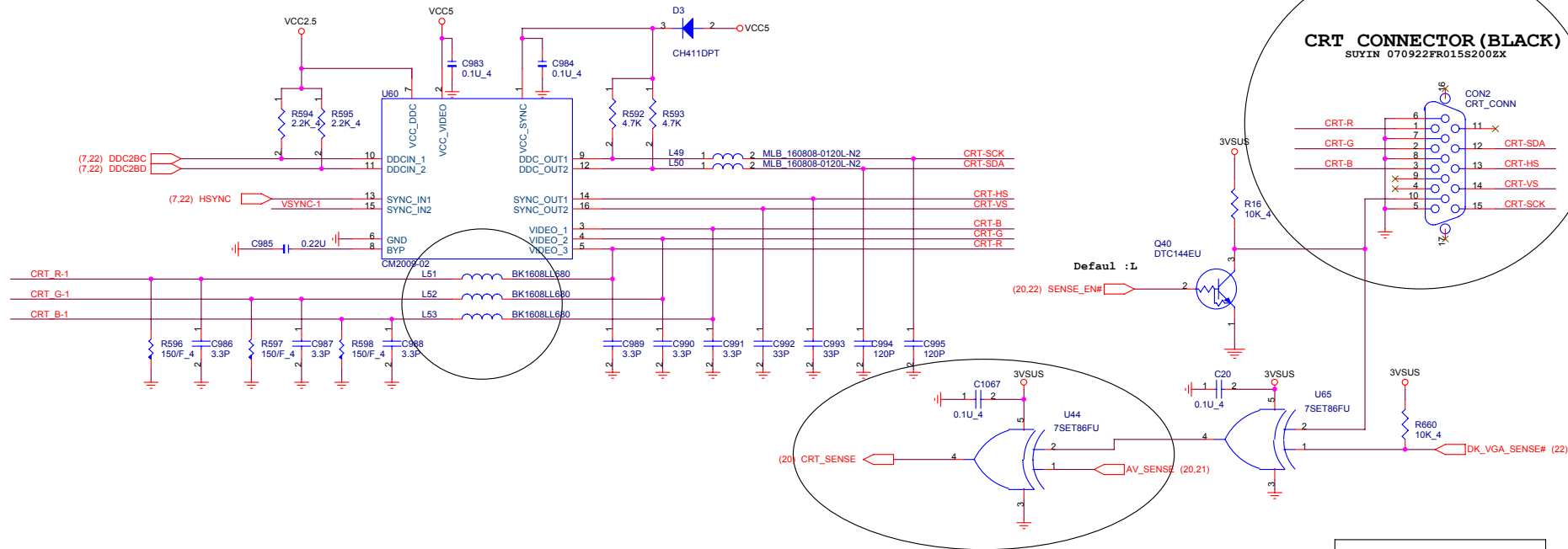




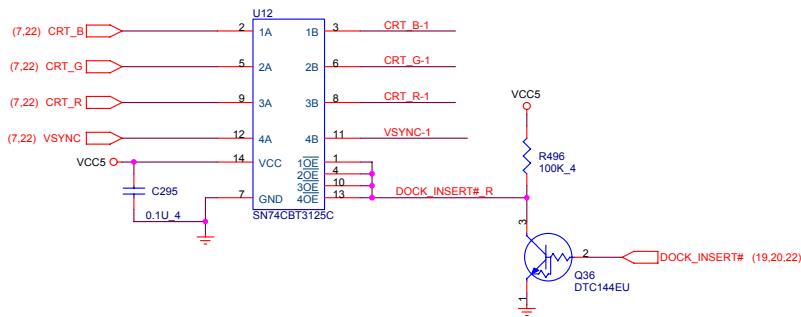




Size	Document Number	Rev
	RD1 Main Board	1A
Date:	Saturday, June 25, 2005	Sheet 8 of 32



Close to PR-CONN



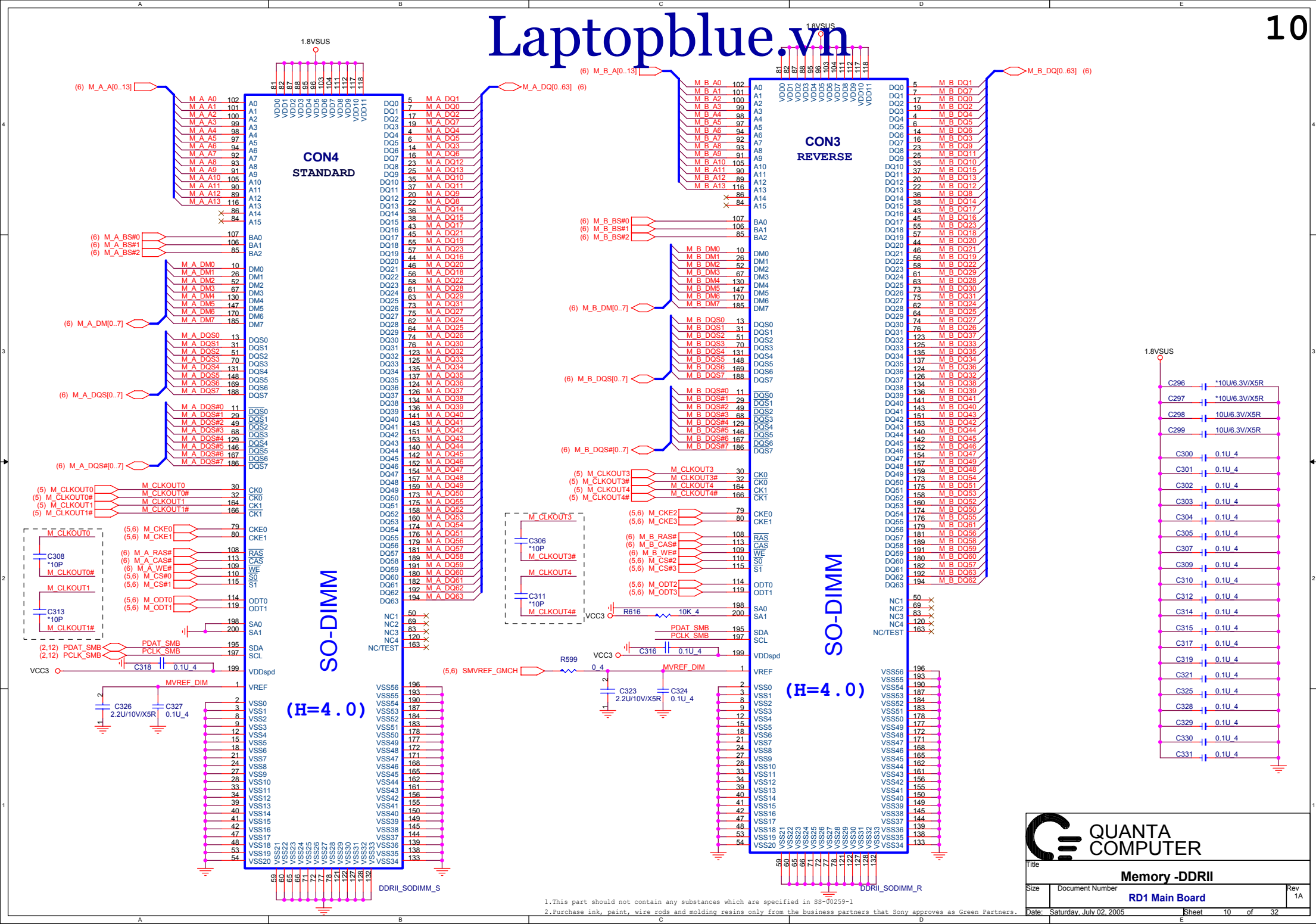
Plug Display true table

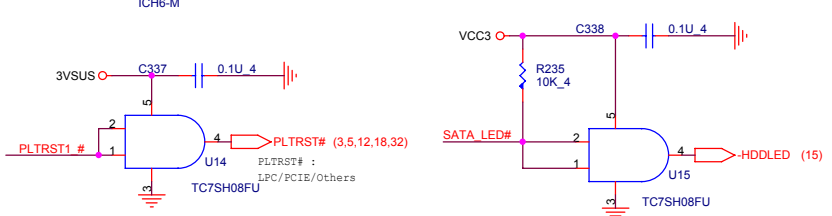
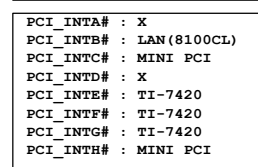
DOCK_INSERT#	SENSE_EN#	MB CRT	DK_VGA_SENSE#	DOCK DVI	DOCK CRT	AV_SENSE	CRT_SENSE
H	L	H	H	X	X	L	L
H	L	L	H	X	X	L	H
H	L	H	H	X	X	H	H
H	L	L	H	X	X	H	L
L	L	H	H	L	L	L	H
L	L	H	L	H	H	L	H
L	L	H	H	L	H	H	H
L	L	H	H	H	L	L	L
L	L	H	L	H	H	H	L
L	L	H	L	L	L	H	L
L	L	H	H	H	L	H	H
X	H	X	X	X	X	X	L



Title		CRT /AV OUT	
Size	Document Number	Rev 1A	
RD1 Main Board			
Date:	Thursday, June 30, 2005	Sheet	9 of 32

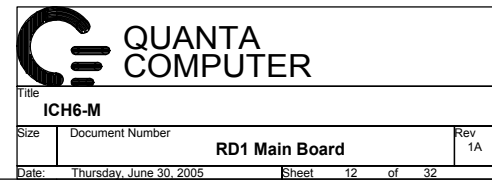
1.This part should not contain any substances which are specified in S8-00259-1
2.Purchase ink, paint, wire rods and molding resins only from the business partners that Sony approves as Green Partners.

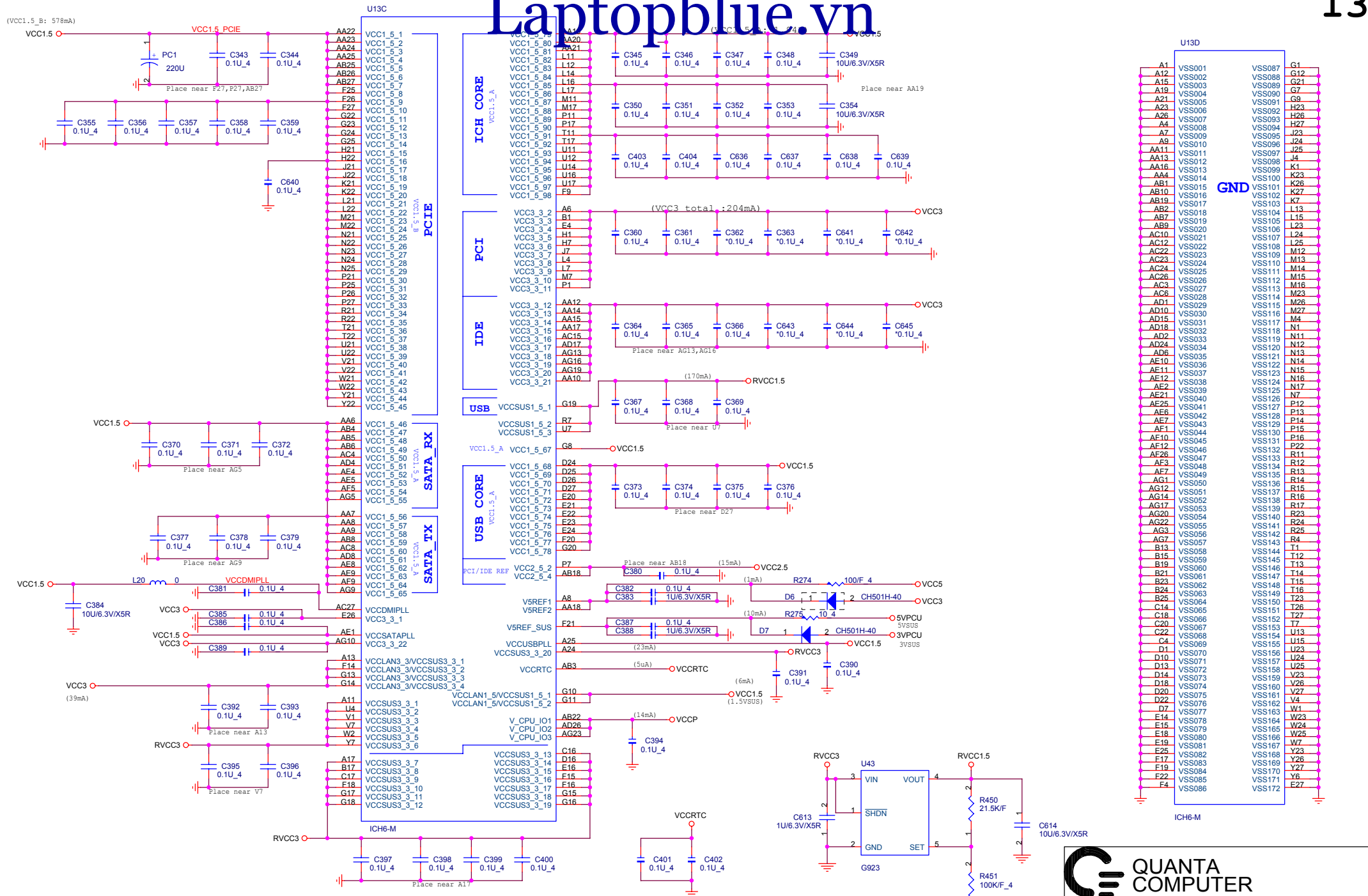




1.This part should not contain any substances which are specified in SS-00259-1

2.Purchase ink, paint, wire rods and molding resins only from the business partners that Sony approves as Green Partners.





QUANTA COMPUTER

Title: **ICH6-M**

Size: **RD1 Main Board**

Document Number: **Rev 1A**

Date: **Saturday, June 25, 2005**

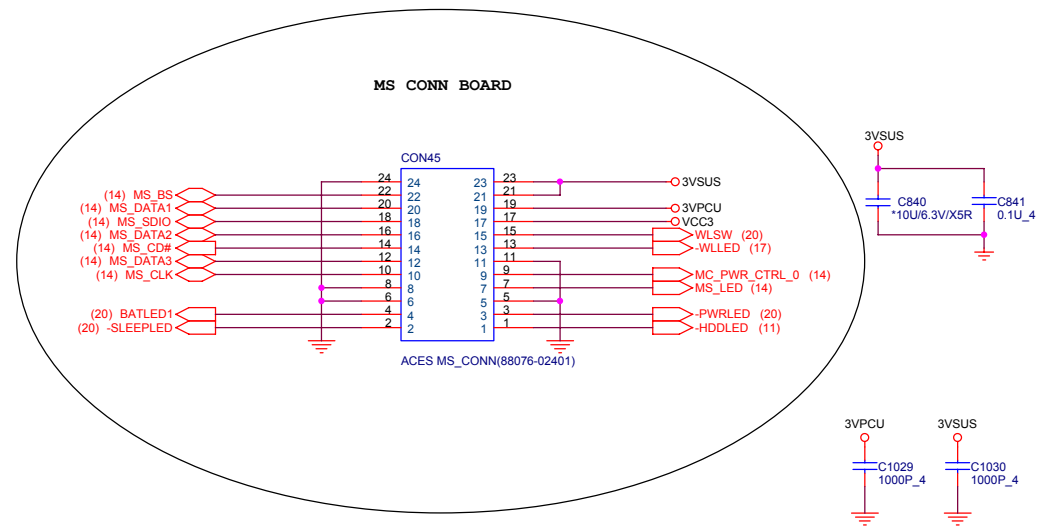
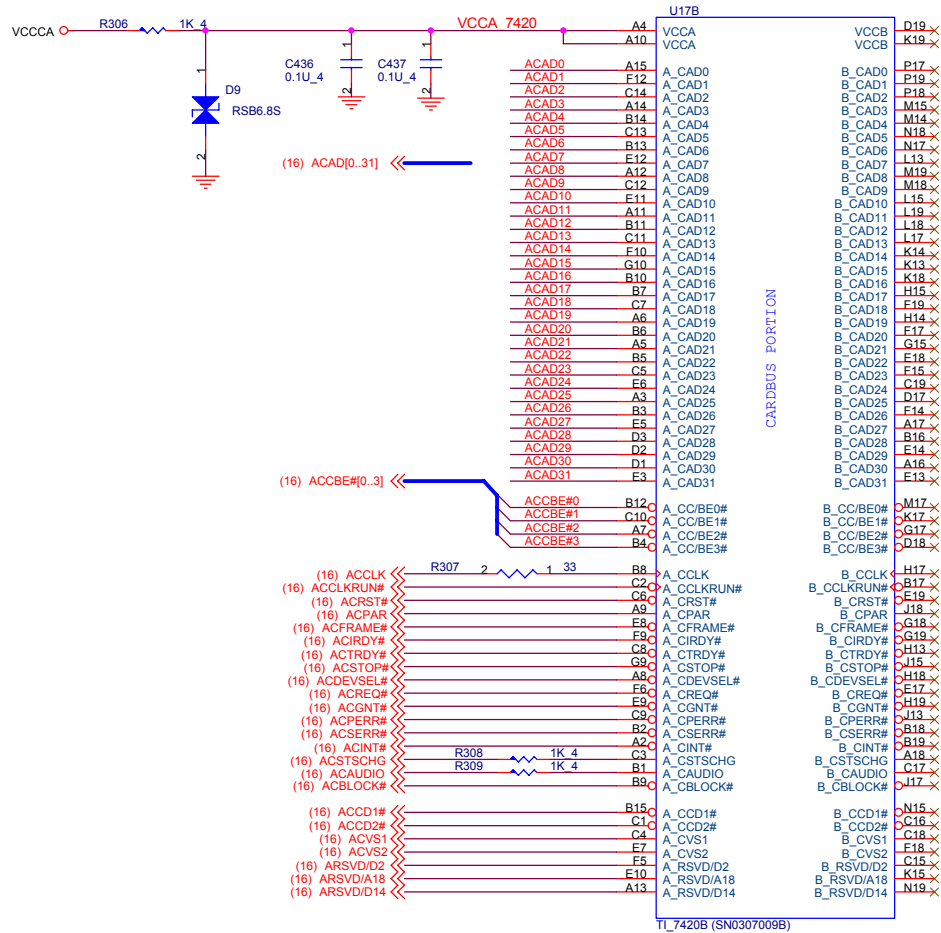
Sheet: **13** of **32**

1. This part should not contain any substances which are specified in SS-00259-1
 2. Purchase ink, paint, wire rods and molding resins only from the business partners that Sony approves as Green Partners.



Size	Document Number	Rev
	RD1 Main Board	1A
Date: Saturday, July 02, 2005	Sheet	11 of 22

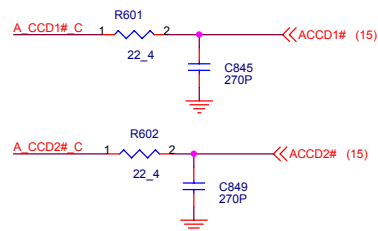
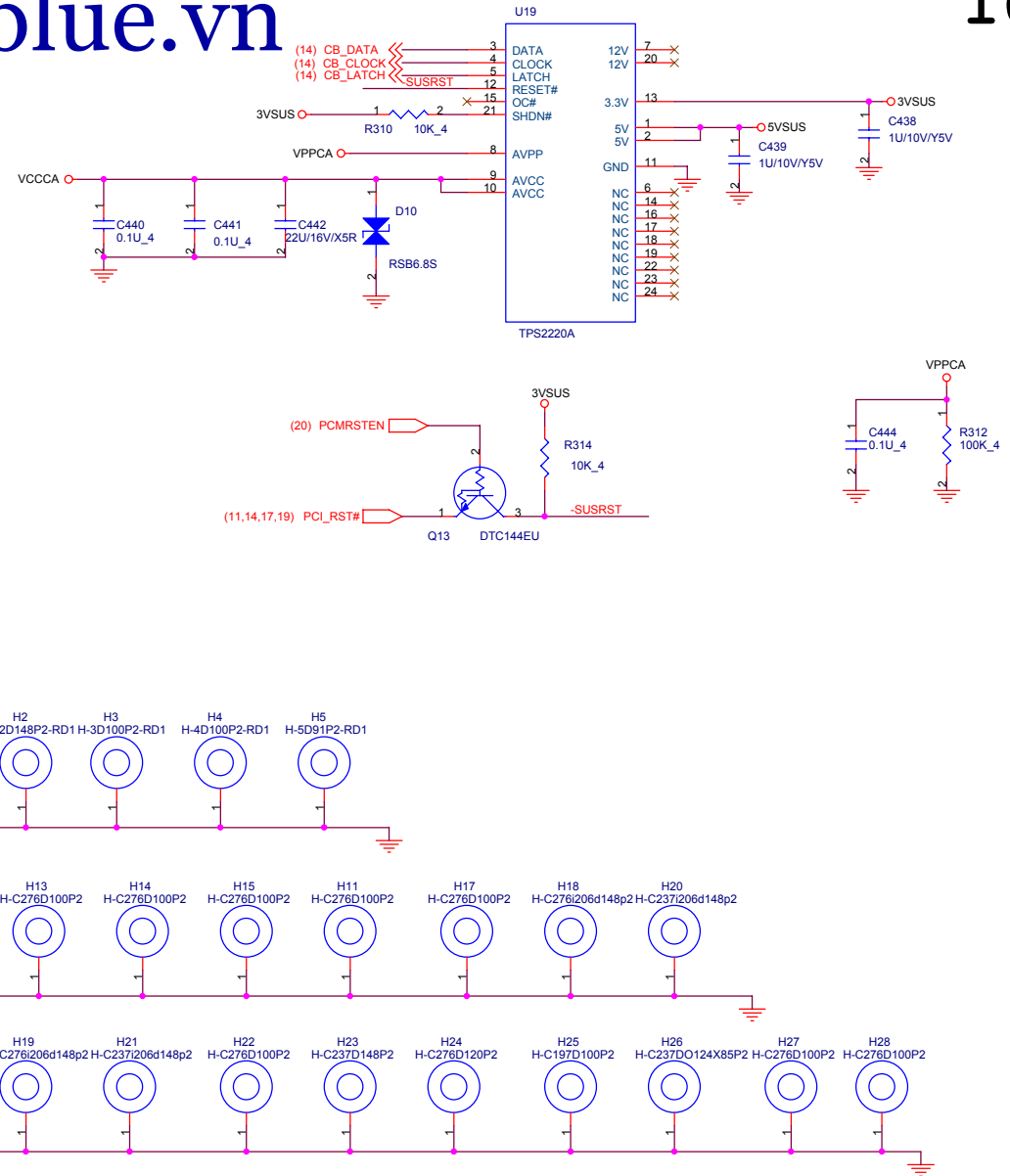
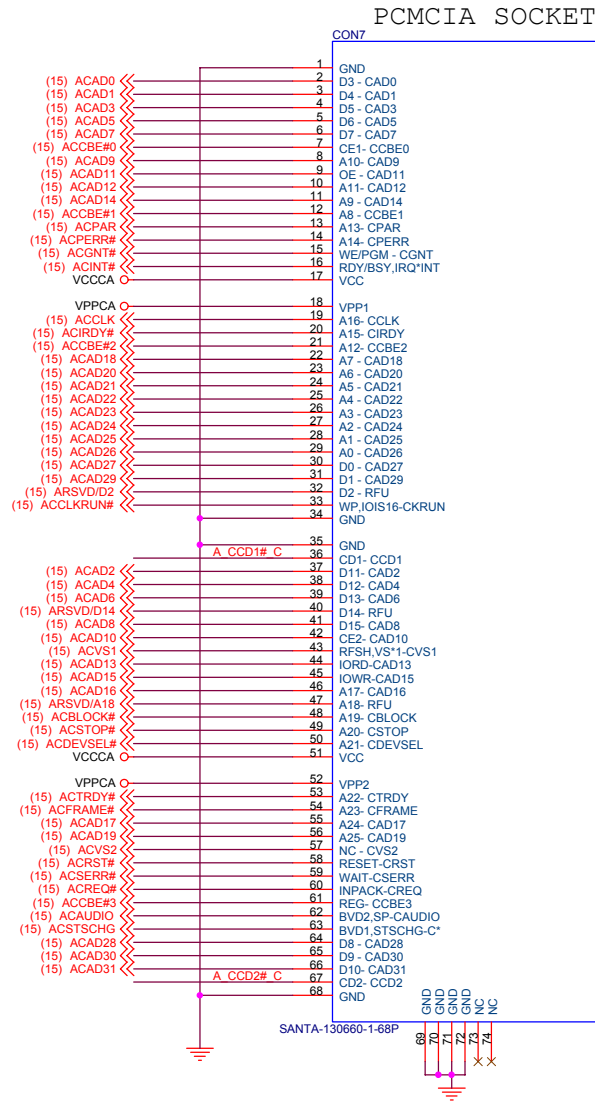
MP side ACES 88076-02401 with boss
MS side : ACES 88066-02401 with boss
H=2.0mm



(15) ACAD0[0..31] <<=
(15) ACCBE#[0..3] <<=

Laptopblue.vn

16



CardBus inject : 130660-1 , FB0A6063017
CardBus CONN : 130610-1



Title
CARDBUS SLOT

Size Document Number
RD1 Main Board

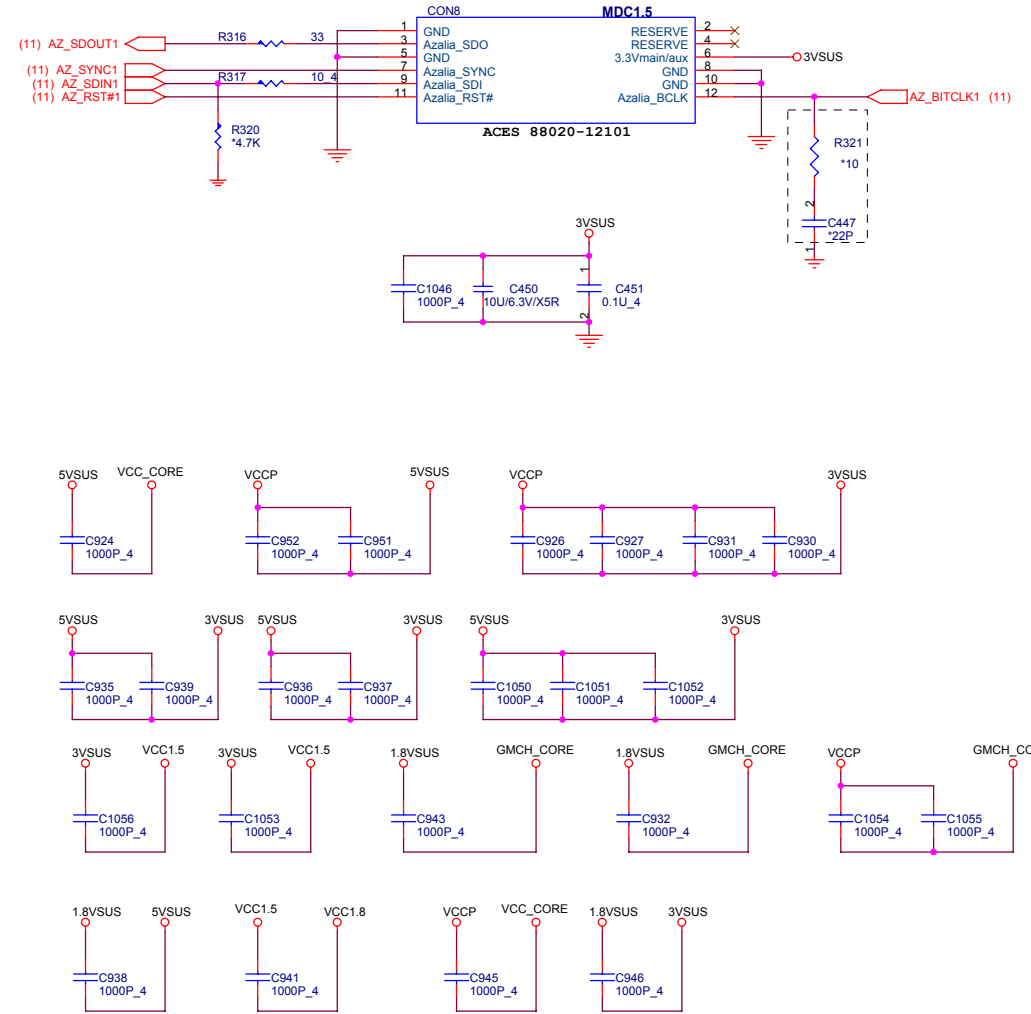
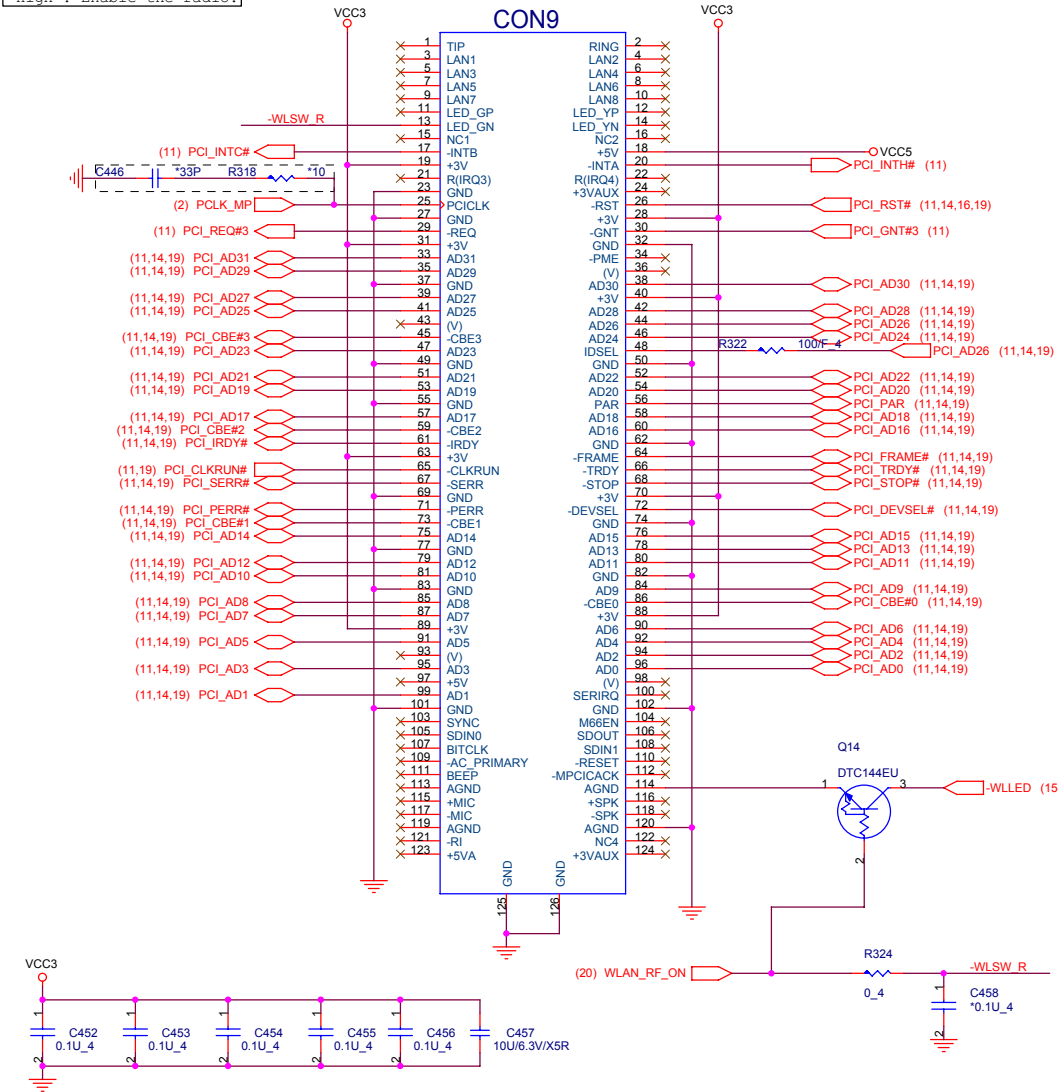
Date: Saturday, July 02, 2005 Sheet 16 of 32

1.This part should not contain any substances which are specified in SS-00259-1
2.Purchase ink, paint, wire rods and molding resins only from the business partners that Sony approves as Green Partners.

Rev 1A

LED_GP :LED WLEN LINK
Output Current : 7mA
Blink rate : 1 flash
per every 3 sec.
WLSW:
Low : disable the radio.
High : Enable the radio.

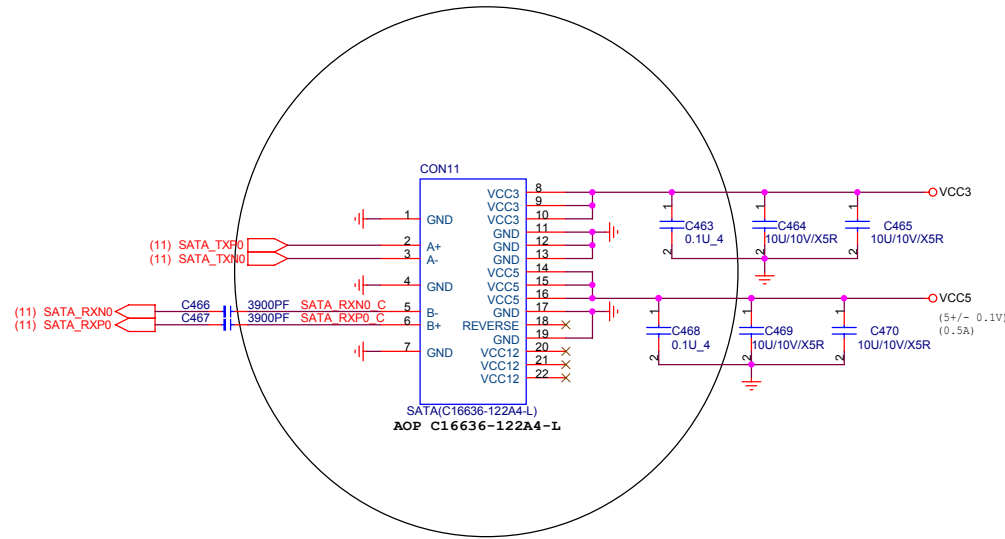
AMP 1734835-2
MINIPCI H=6.7
CON9



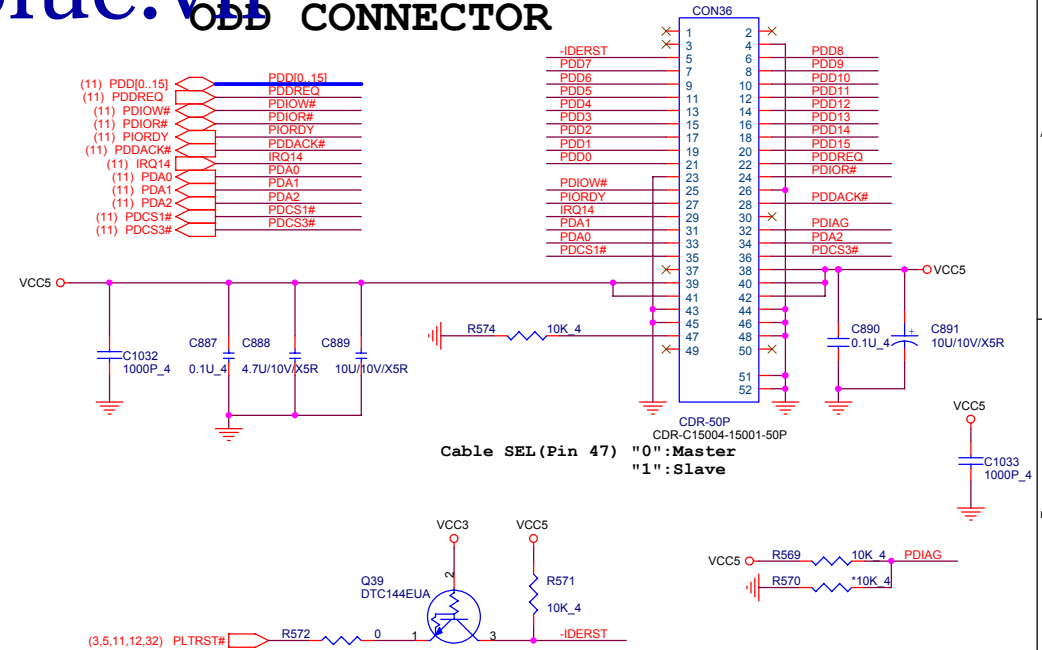
Title		
MINIPCI /MDC		
Size	Document Number	Rev
	RD1 Main Board	1A
Date:	Thursday, June 30, 2005	Sheet 17 of 32

1.This part should not contain any substances which are specified in SS-00259-1
2.Purchase ink, paint, wire rods and molding resins only from the business partners that Sony approves as Green Partners.

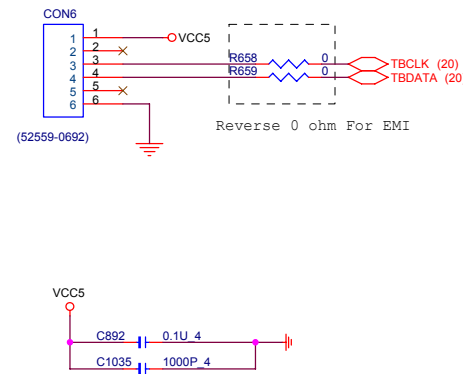
HDD CONNECTOR



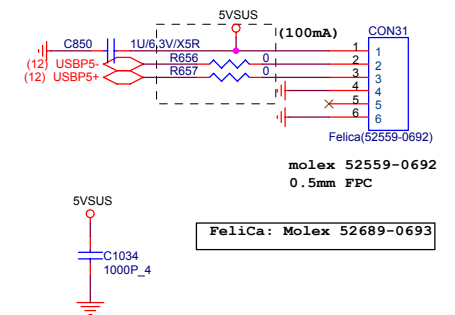
ODD CONNECTOR

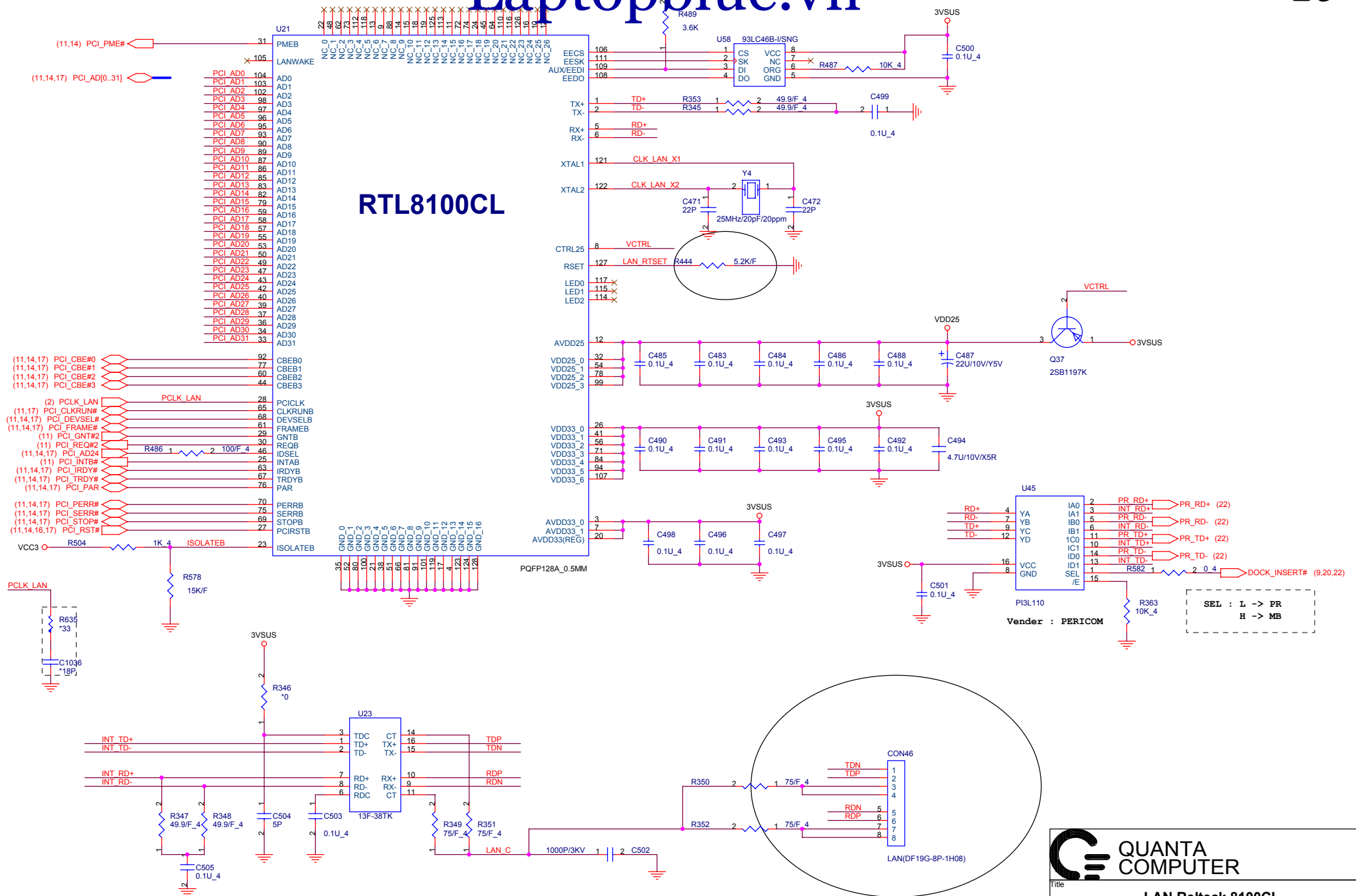


TOUCH PAD CONNECTOR

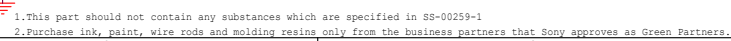


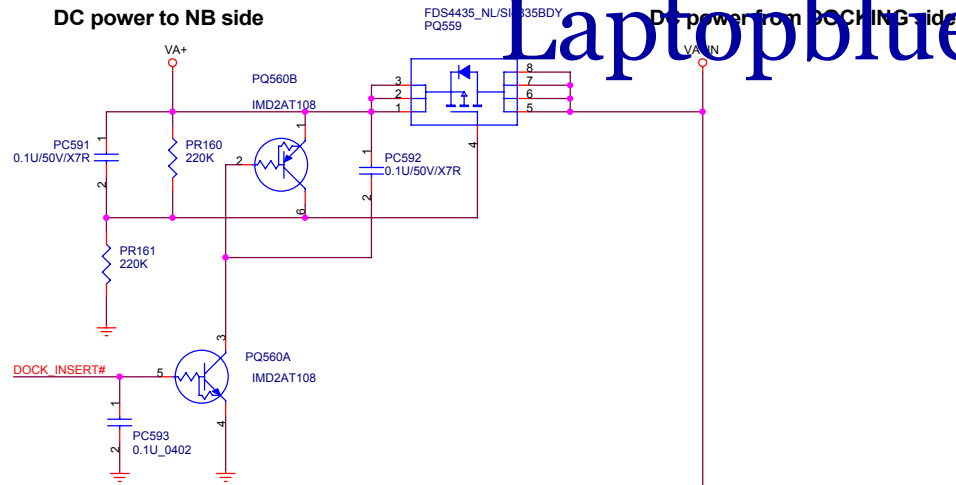
FeliCa



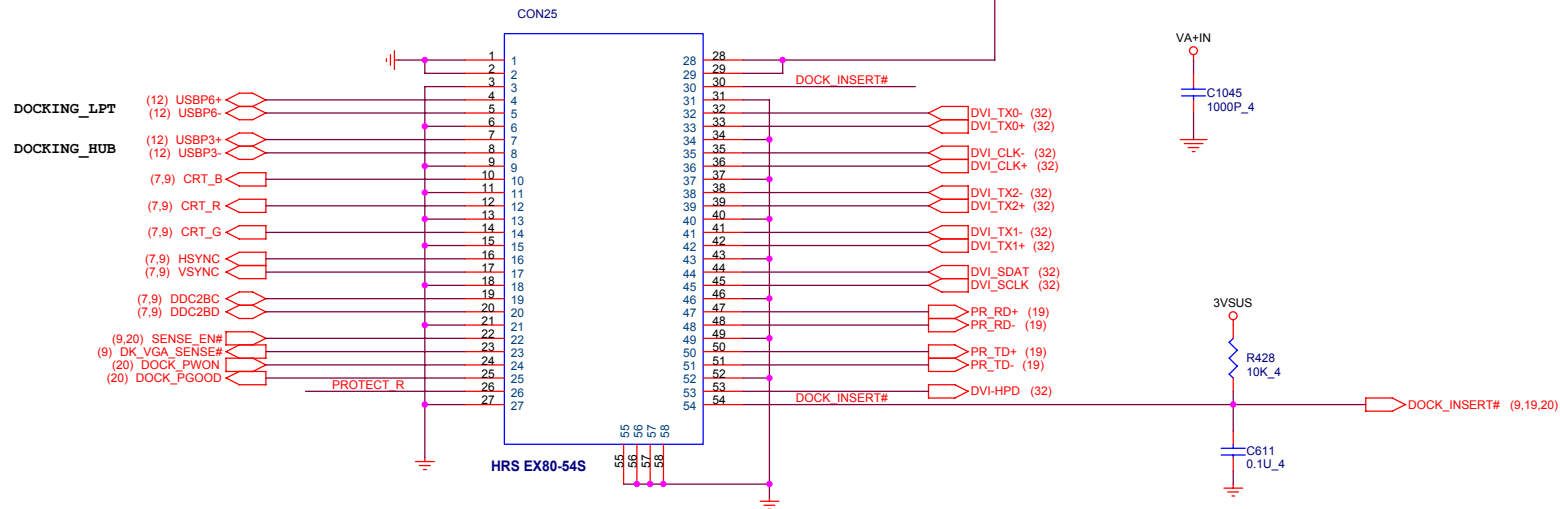


2. Purchase ink, paint, wire rods and molding resins only from the business partners that Sony approves as Green Partners.

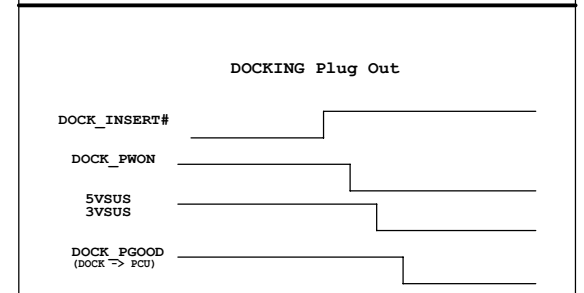
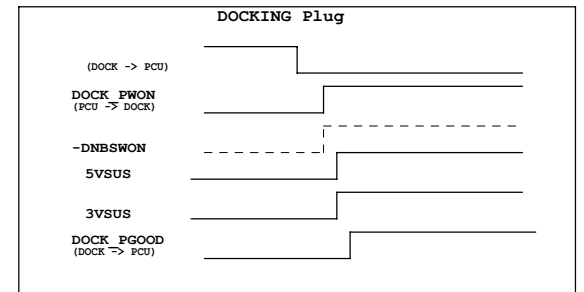
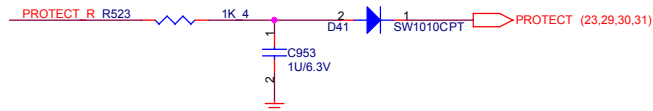




Port Replicator CONN

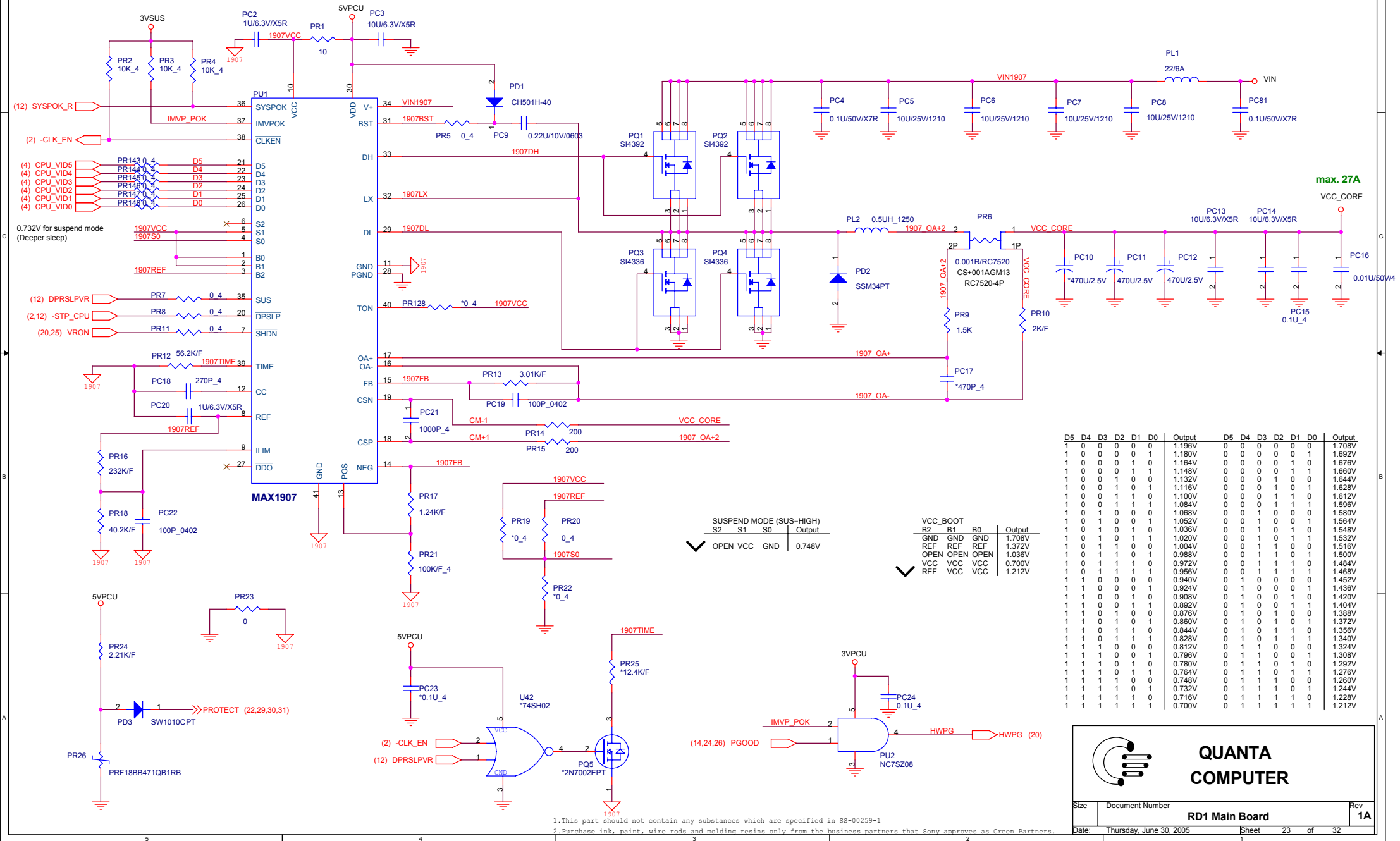


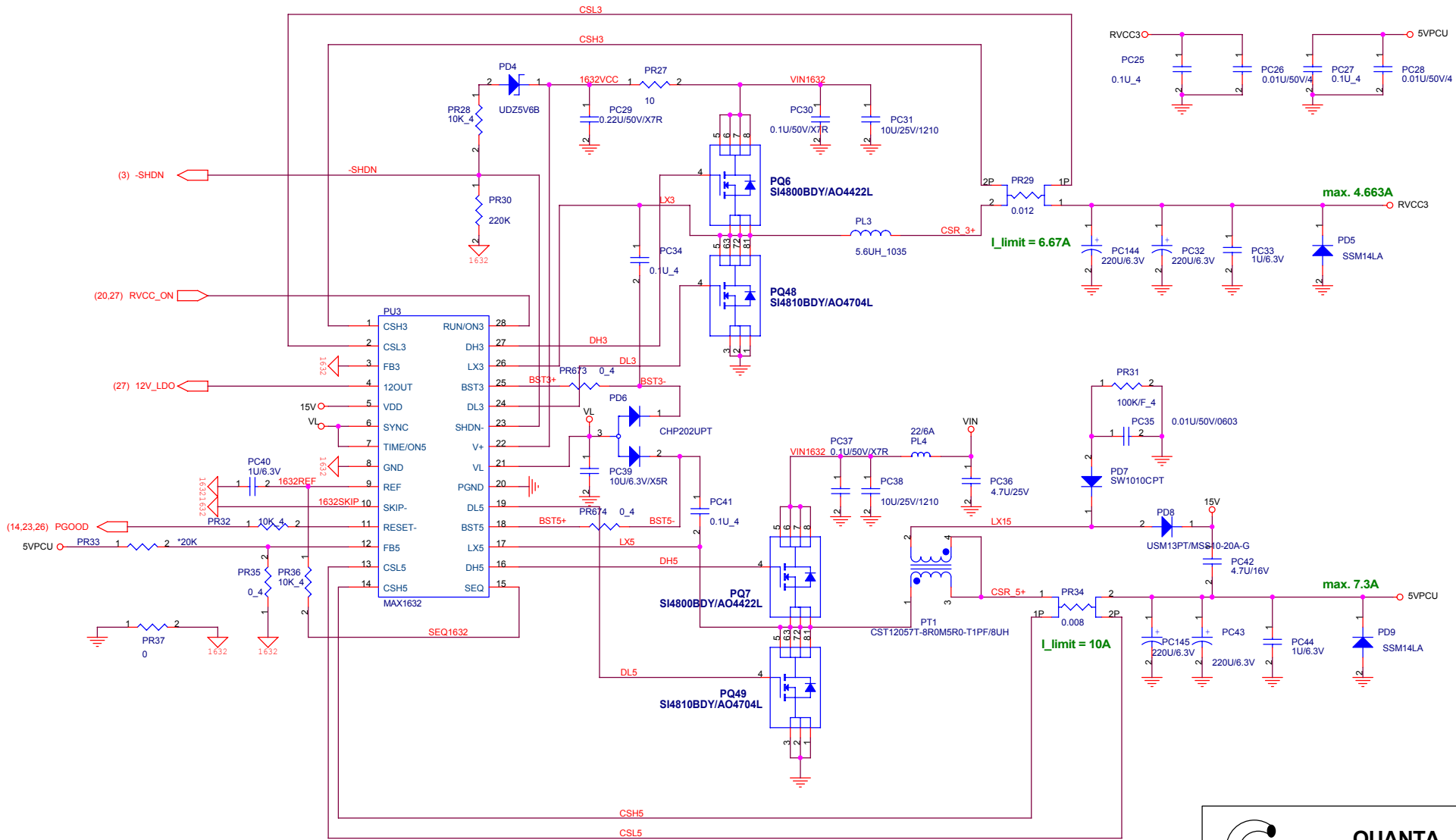
Docking detect Pin : PIN3,PIN30 and PIN 54



Title			Docking	
Size	Document Number		RD1 Main Board	
Date:	Thursday, June 30, 2005	Sheet	22	of 32
		Rev		1A

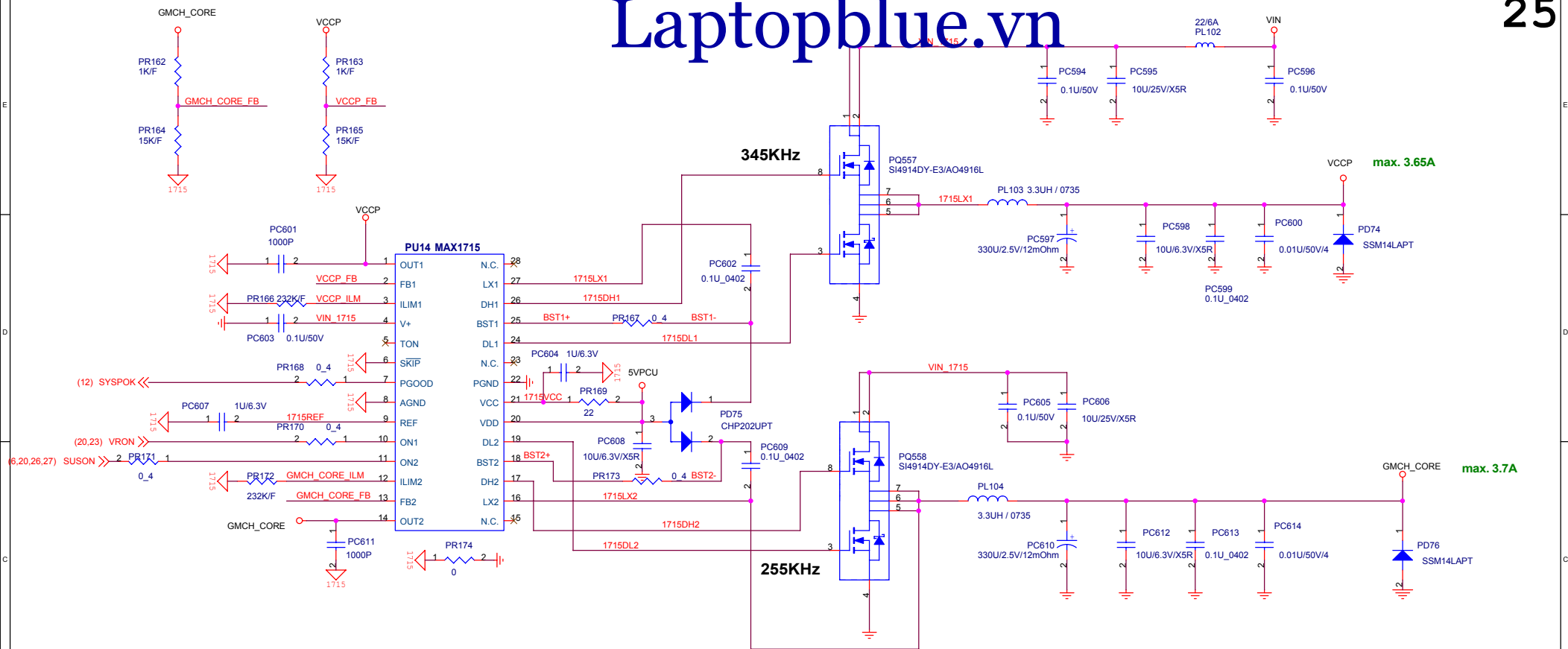
1.This part should not contain any substances which are specified in SS-00259-1
2.Purchase ink, paint, wire rods and molding resins only from the business partners that Sony approves as Green Partners.



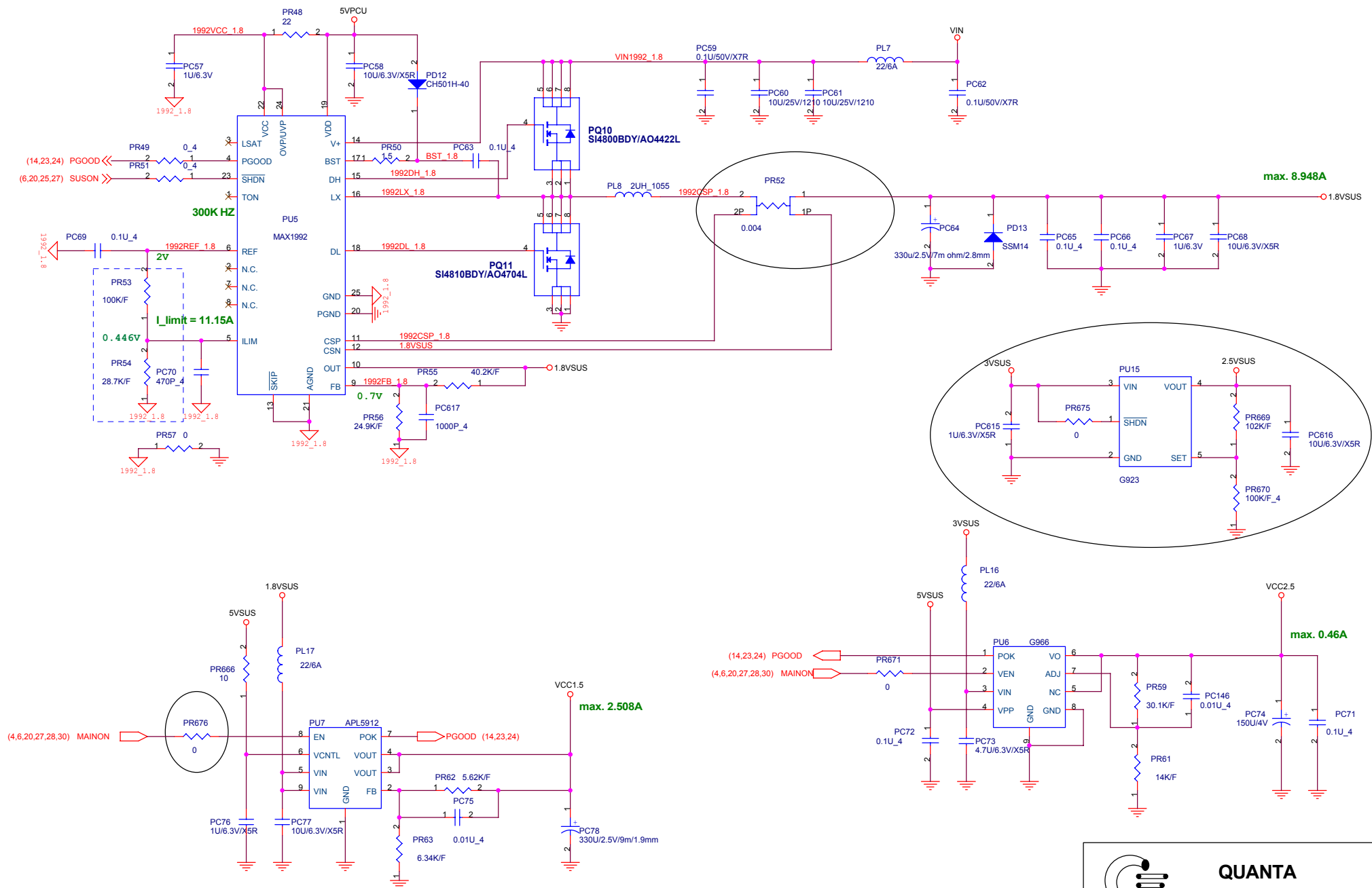


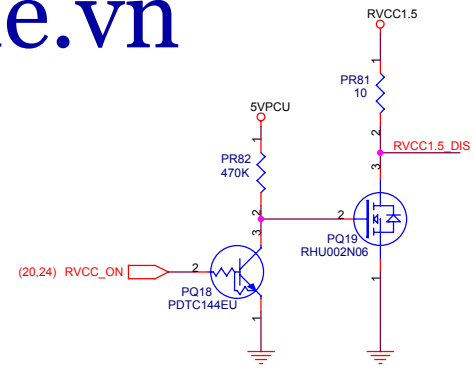
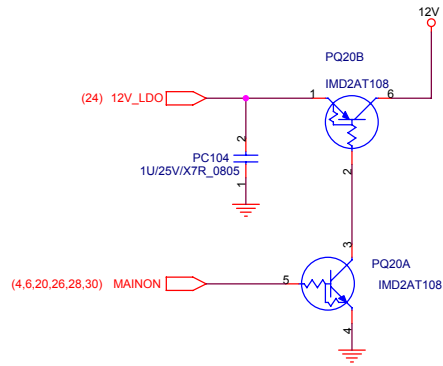
**QUANTA
COMPUTER**

Size	Document Number	RD1 Main Board	Rev 1A
Date: Thursday, June 30, 2005		Sheet 24 of 32	

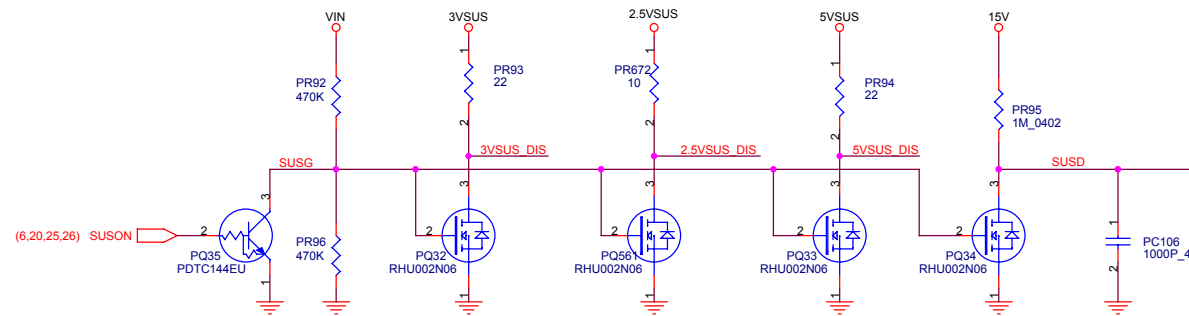
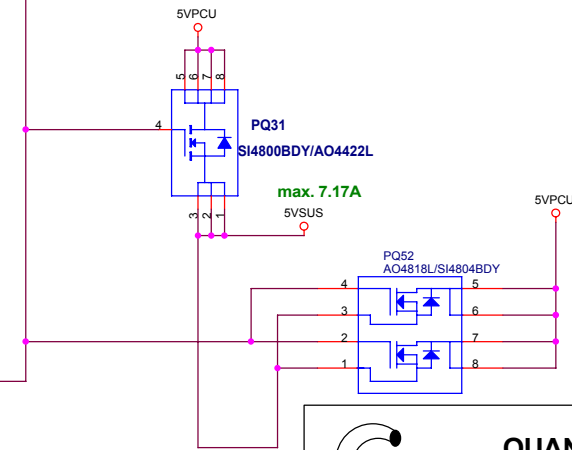
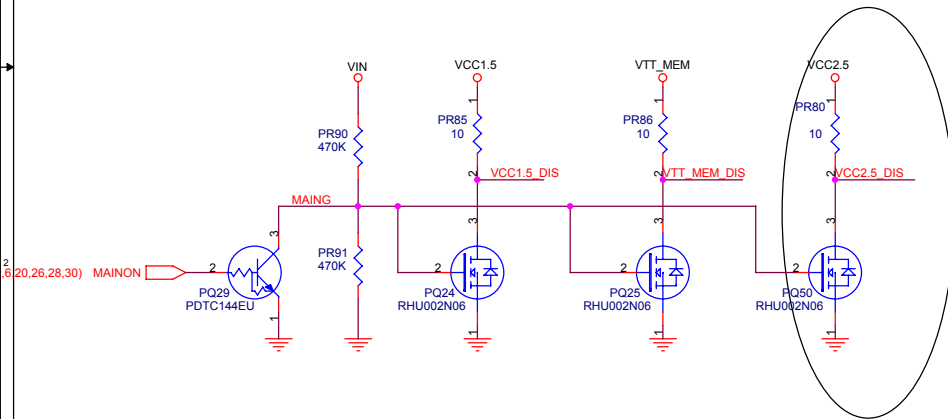
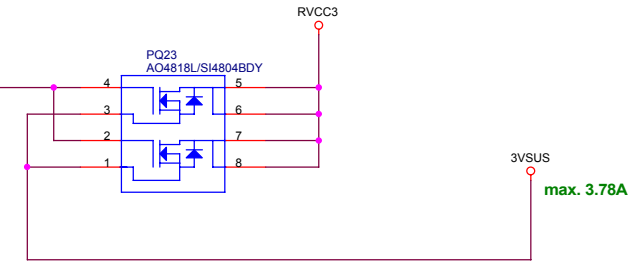


1.This part should not contain any substances which are specified in SS-00259-1
2.Purchase ink, paint, wire rods and molding resins only from the business partners that Sony approves as Green Partners.





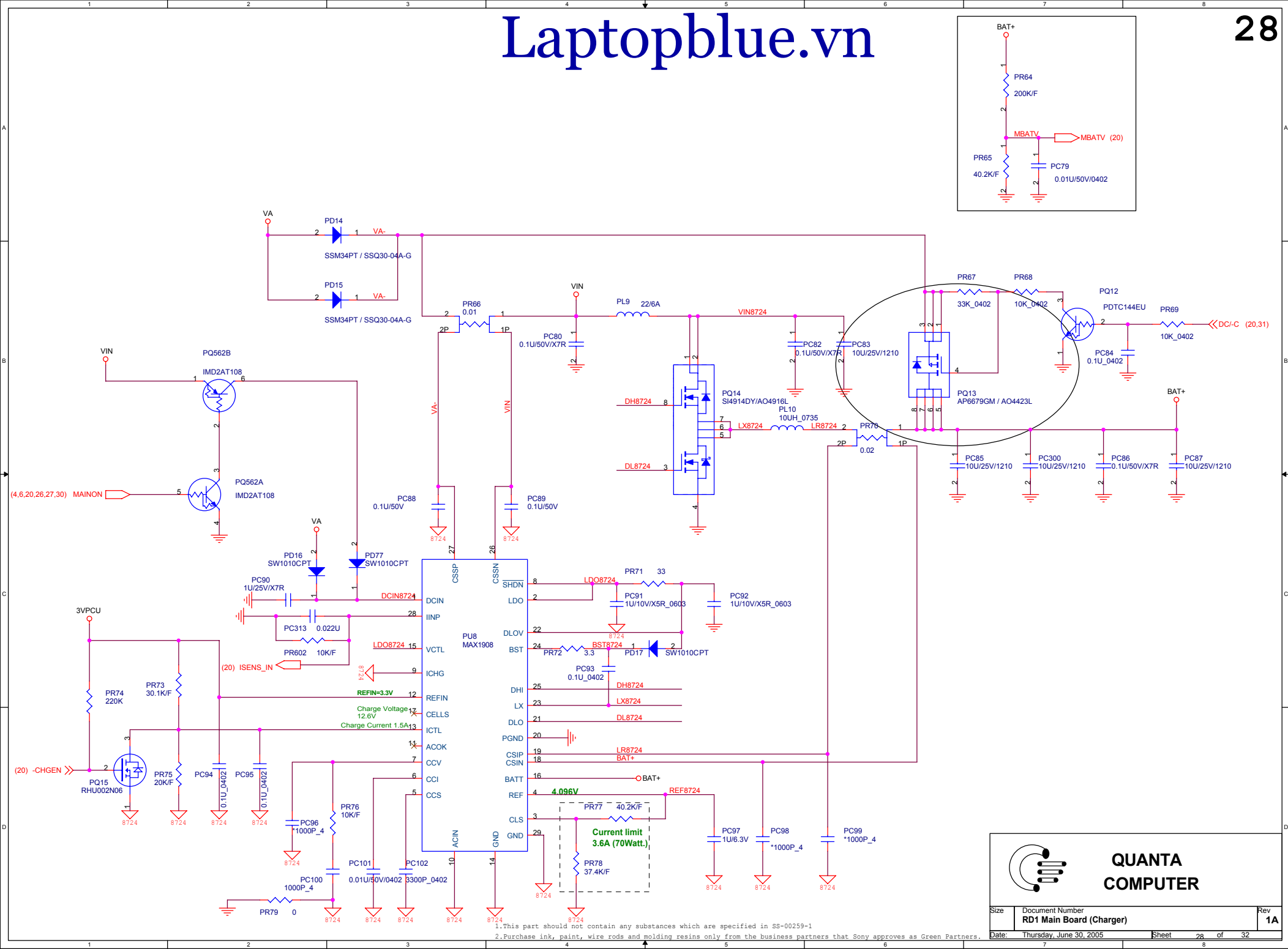
VCC1.8 — 1.8VSUS
VCC3 — 3VSUS
VCC5 — 5VSUS

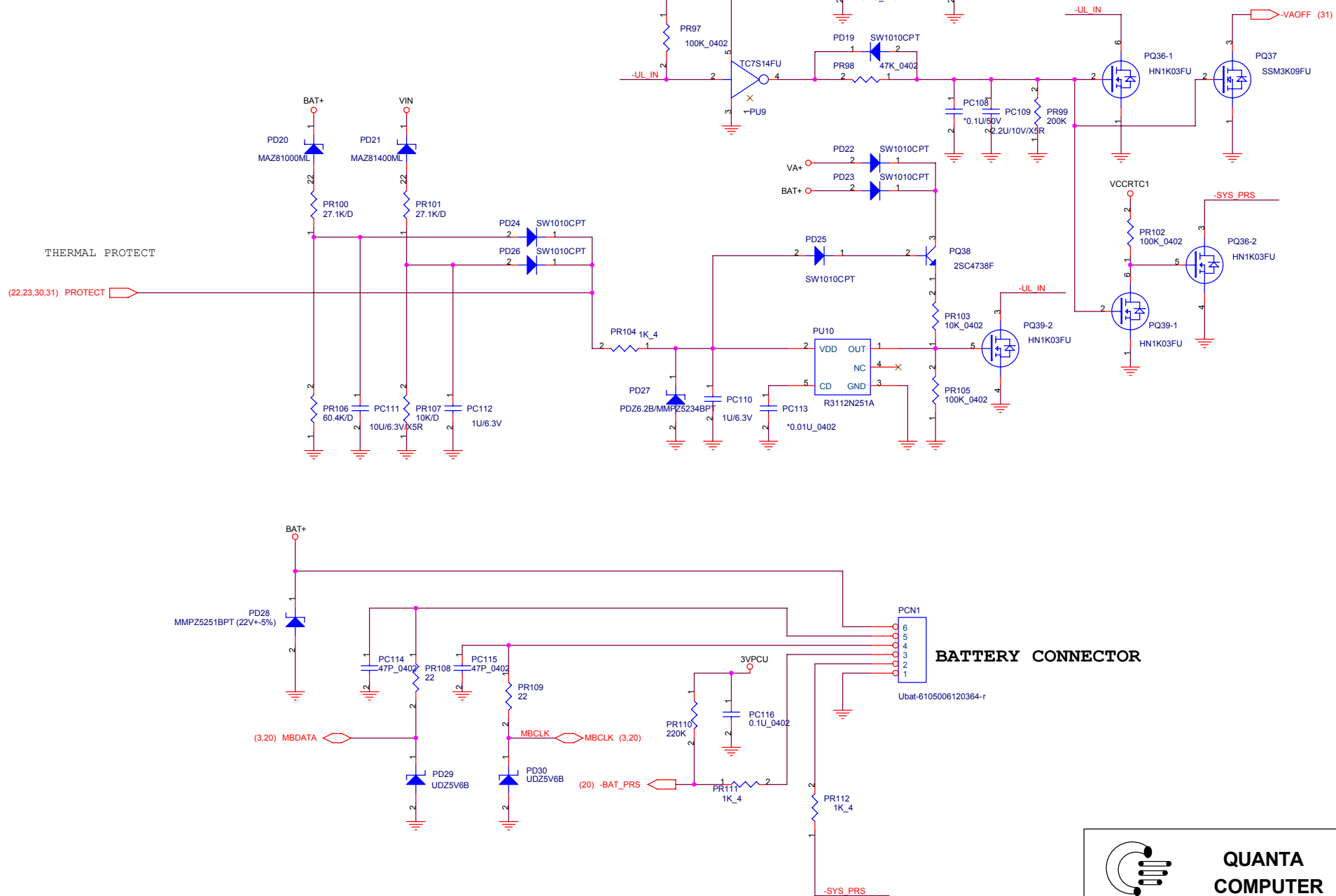


QUANTA COMPUTER

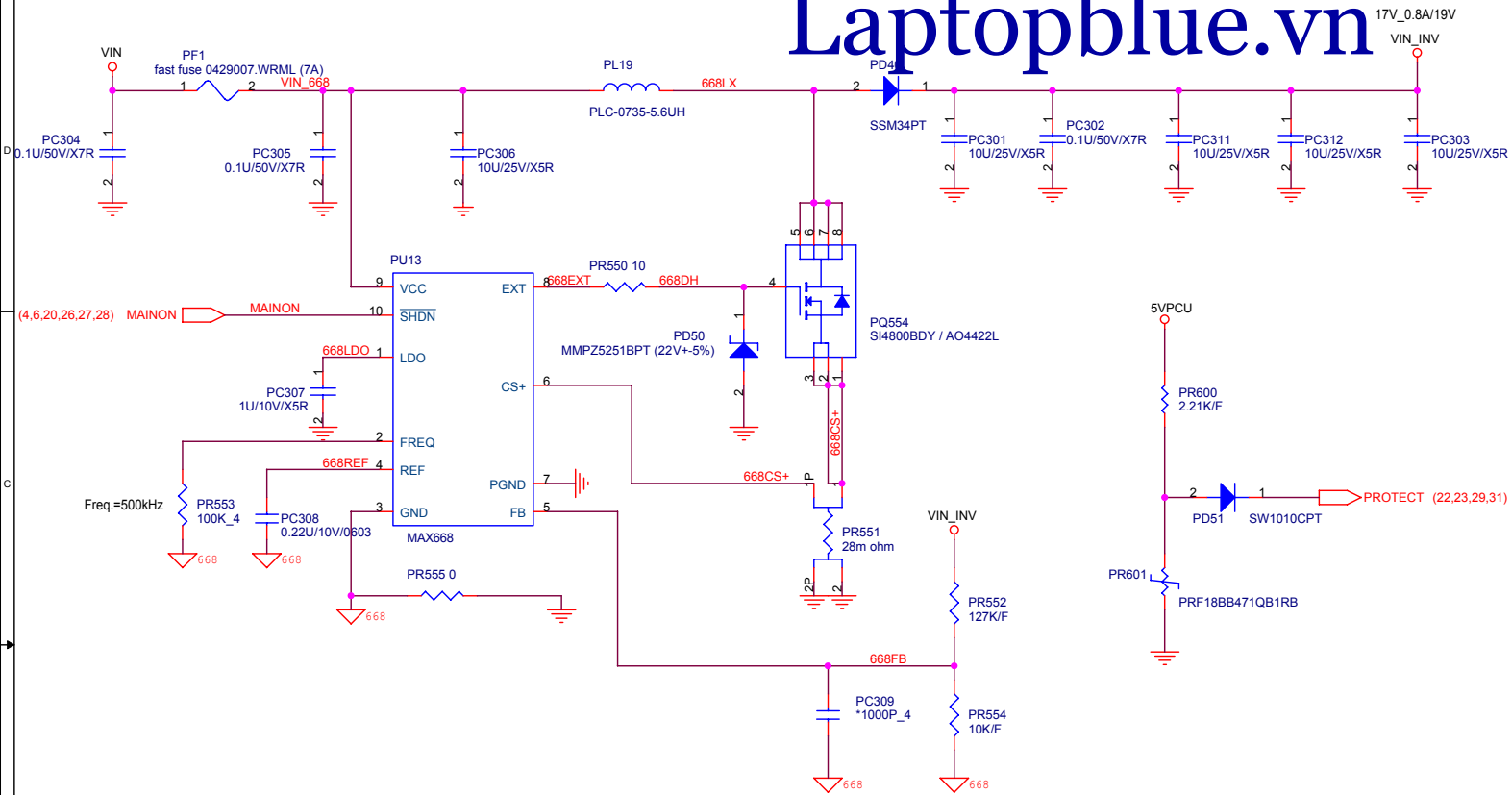
Size	Document Number	Rev
	RD1 Main Board	1A
Date:	Thursday, June 30, 2005	Sheet 27 of 32

1.This part should not contain any substances which are specified in SS-00259-1
2.Purchase ink, paint, wire rods and molding resins only from the business
partners that Sony approves as Green Partners.





**QUANTA
COMPUTER**



**QUANTA
COMPUTER**

1.This part should not contain any substances which are specified in SS-00259-1
2.Purchase ink, paint, wire rods and molding resins only from the business partners that Sony approves as Green Partners.

Size	Document Number	Rev
	RD1 Main Board	1A
Date:	Thursday, June 30, 2005	Sheet 30 of 32

