



## Table Of Contents

Page	Page	Page
5- DC & Battery Charger	15- APU LLANO-1	38- RJ45 CONN, Transformer
6- Select & Battery CONN	16- APU LLANO-2	39- WLAN (Mini Card)
7- System Power (+V3A/+V5A)	17- APU LLANO-3 & HDT	40- G sensor (Accelerometer)
8- System Power (+V1.1A/+V2.5S)	18- APU LLANO-4	41- PWR & FP & Launch & Web/DMIC CONN
9- DDR3 Power (+V1.5_+V1.35/+V0.75S)	19- DDR3-DIMM0 (8.0)	42- USB3.0 Controller (Reserved)
10- APU Power (VDD/VDDNB)	20- DDR3-DIMM1 (4.0)	43- USB CONNs
11- SYSTEM POWER VDDP,VDDR (+V1.2)	21- Thermal & FAN	44- Express Card
12- Power (Sleep: +V5S/+V3S/+V1.1S)	22- Travis (DP to LVDS)	45- Screw
13- OCP	23- LCM	46- DB~3in1 Card Reader & Audio jack-1
14- Power (Sequence)	24- HDMI	47- DB~3in1 Card Reader & Audio jack-2
	25- VGA CONN	48- DB~USB CONNs (right side)
	26- FCH-Hudson M3-1	49- DB~Power Switch & LED
	27- FCH-Hudson M3-2	50- DB~LID & Quick Launch, WLAN SW & LED
	28- FCH-Hudson M3-3	51- DB~Pick Button
	29- FCH-Hudson M3-4	52- DB~ODD Extend
	30- FCH-Hudson M3-5	53- GPU-Seymour XT (S3 pakage)-1
	31- SPI Flash	54- GPU-Seymour XT (S3 pakage)-2
	32- KBC	55- GPU-Seymour XT (S3 pakage)-3
	33- Keyboard, Touch Pad	56- GPU-Seymour XT (S3 pakage)-4
	34- SATA HDD, ODD & LED.	57- VRAM-1
	35- Audio CODEC	58- VRAM-2
	36- MODEM	59- VGA Power
	37- GLAN Controller	

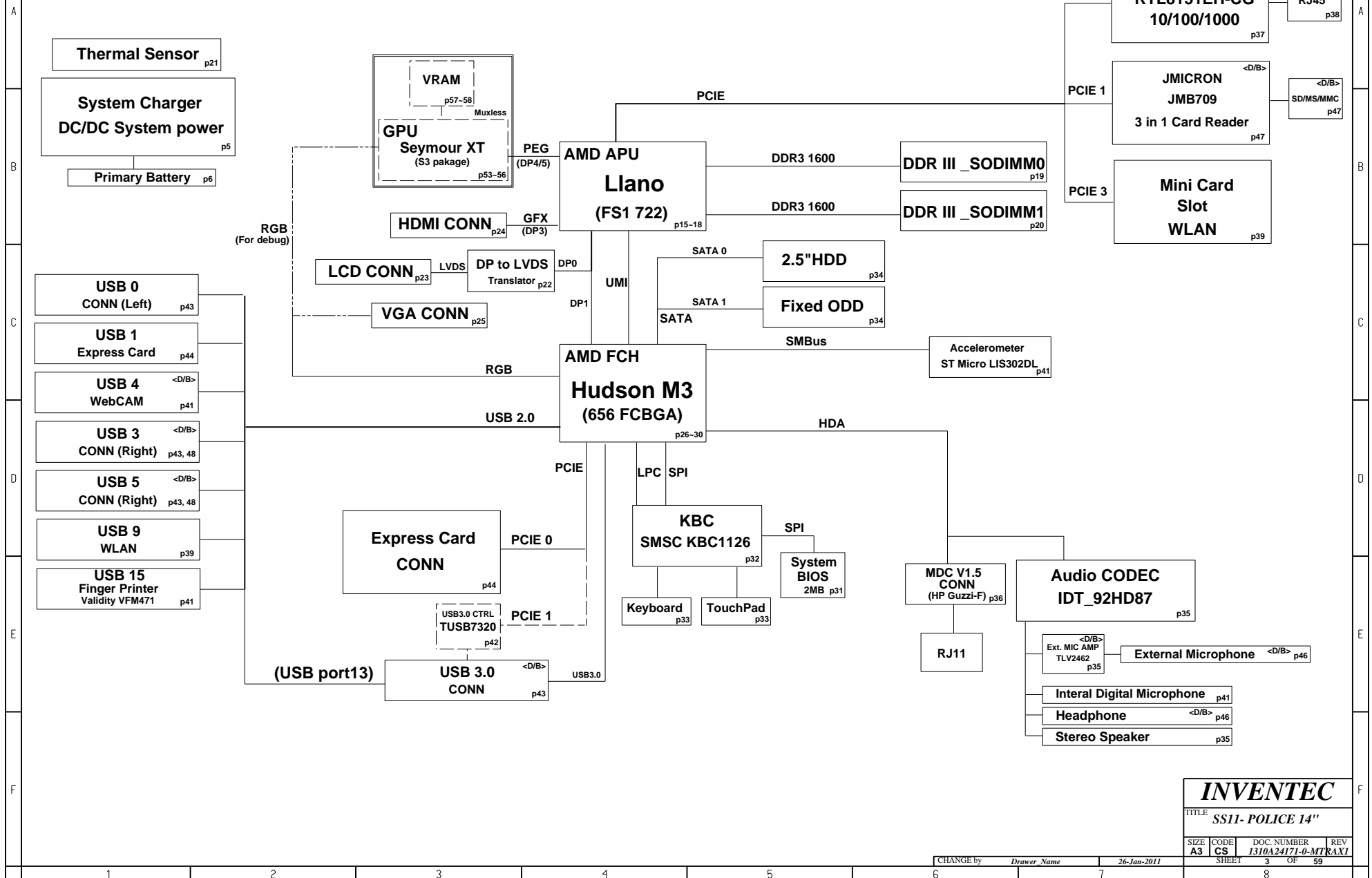
**INVENTEC**

 TITLE  
**SS11- POLICE 14"**  
 Contents

SIZE	CODE	DOC. NUMBER	REV
A3	CS	1310A24171-0-MTR	AXI

 CHANGE by *Drawn Name* 26-Jan-2011

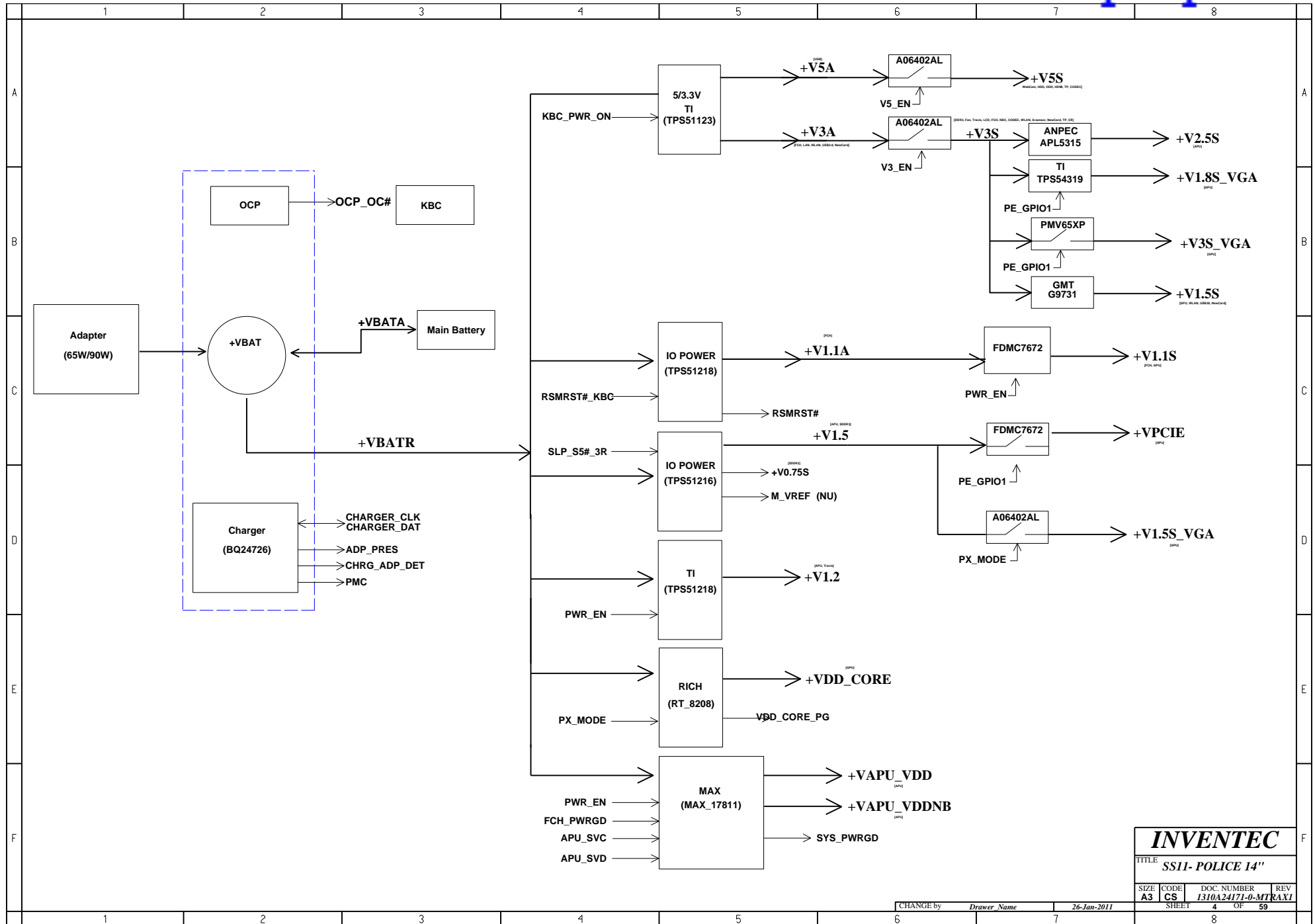
SHEET 2 OF 59

**Inventec Confidential**Hudson M3 (B SERIES : 6019B0775602)  
218-0755008**INVENTEC**TITLE  
SS11- POLICE 14"

SIZE	CODE	DOC. NUMBER	REV
A3	CS	I310A24171-0-MTRAXI	

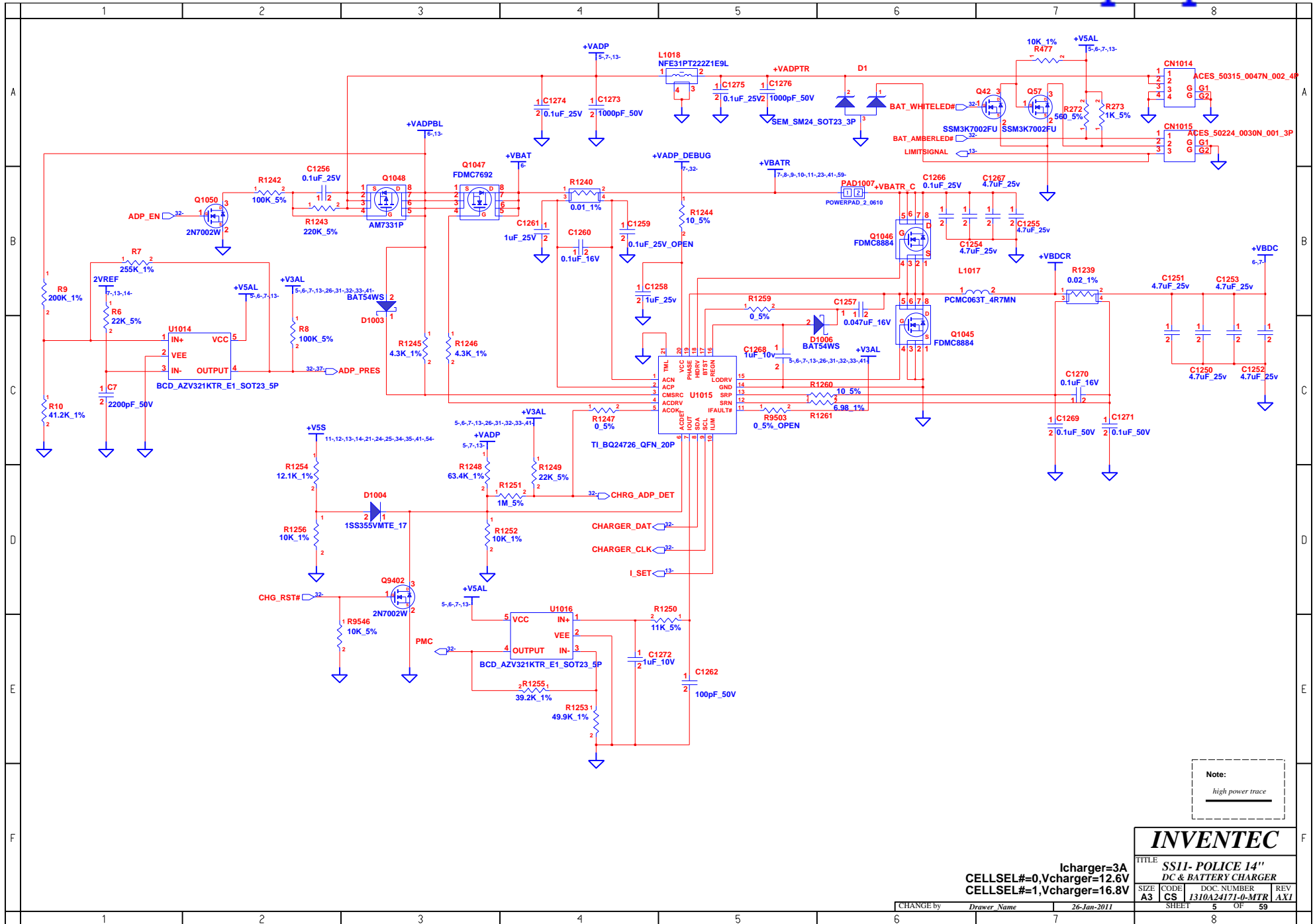
CHANGE by Drawer Name 26-Jan-2011

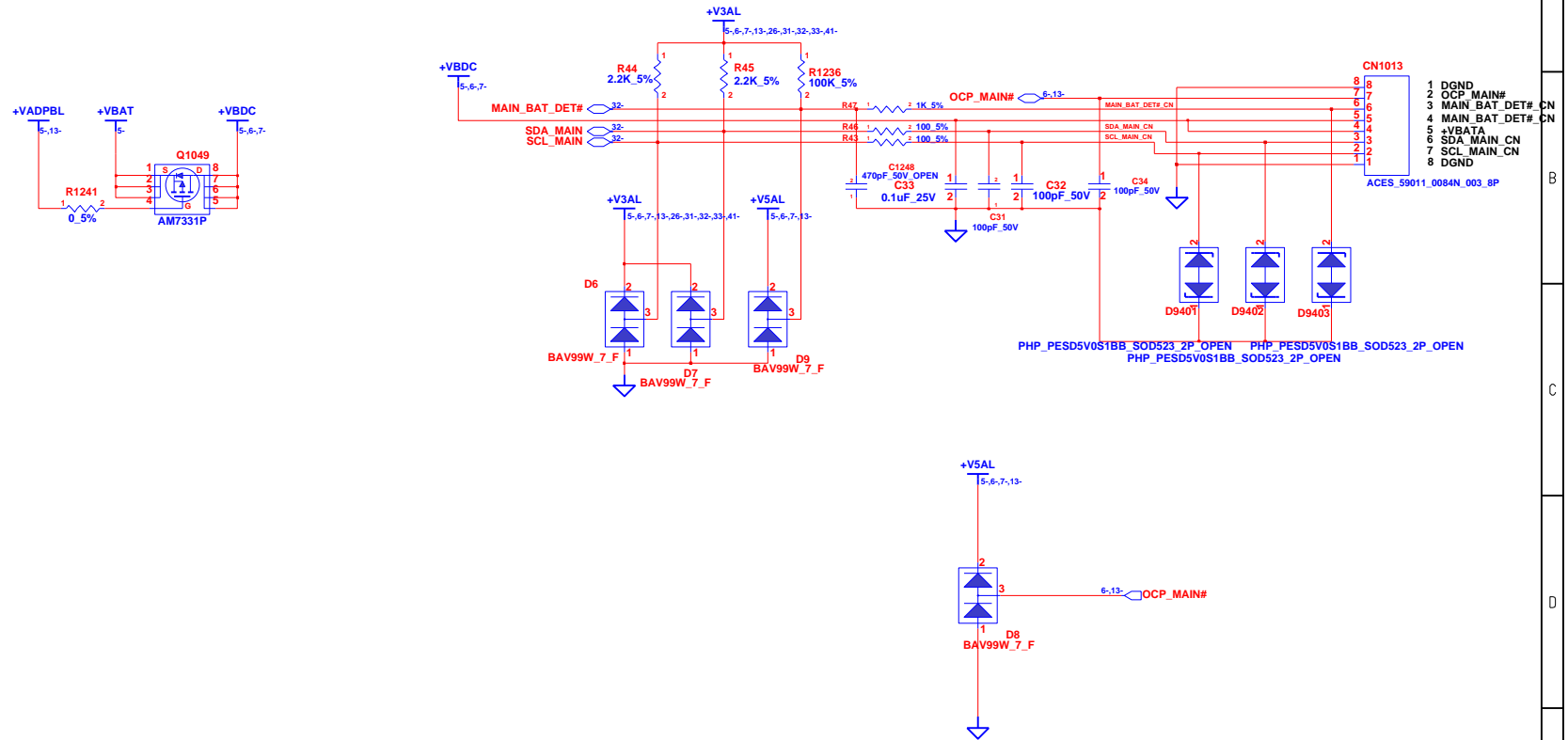
SHEET 3 OF 59



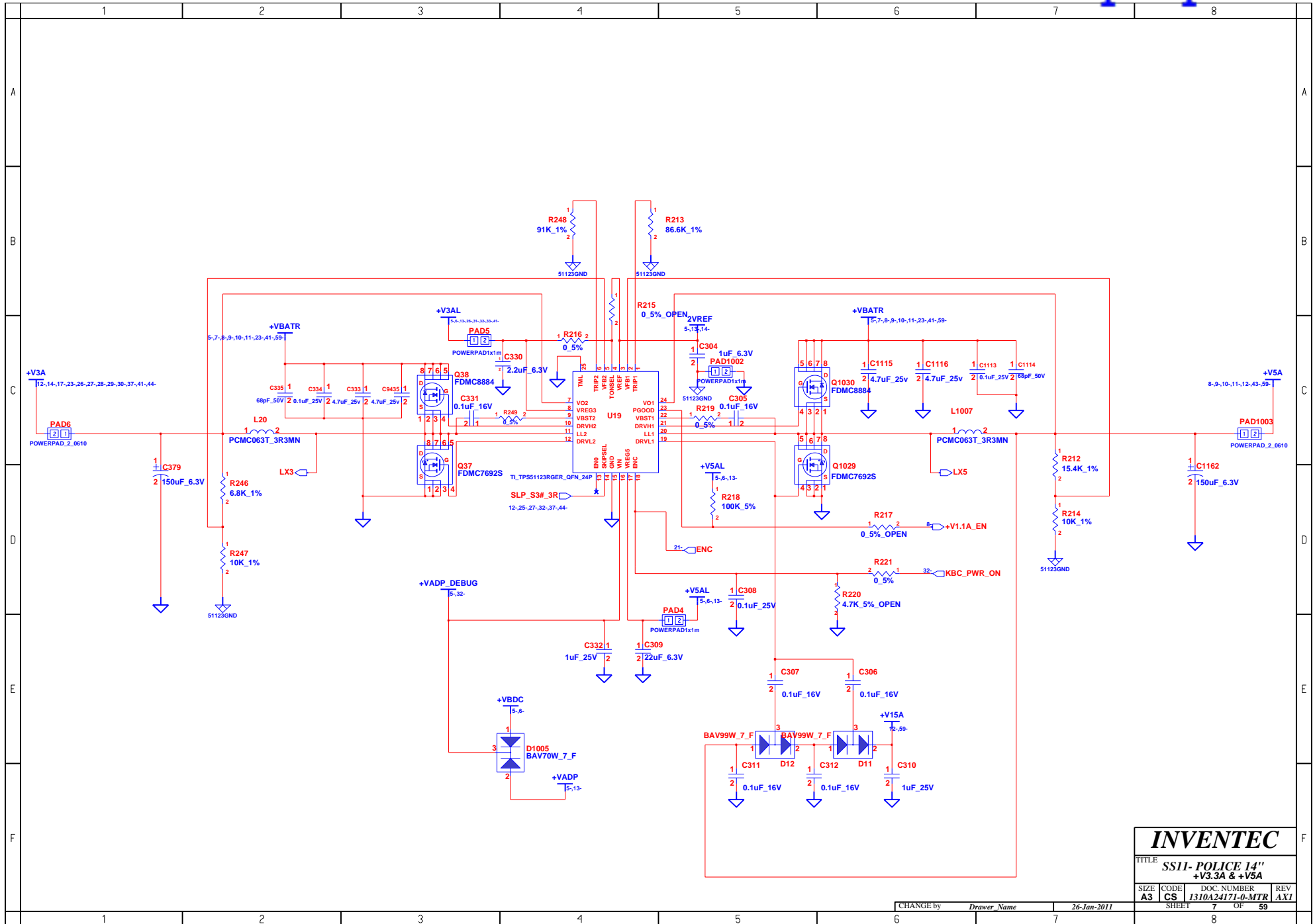
INVENTEC			
TITLE: SS11- POLICE 14"			
SIZE: A3	CODE: CS	DOC. NUMBER: I310A24171-0-MTRAX1	REV: 59
SHEET: 4		OF: 59	

CHANGE by: Drawer Name 26-Jan-2011





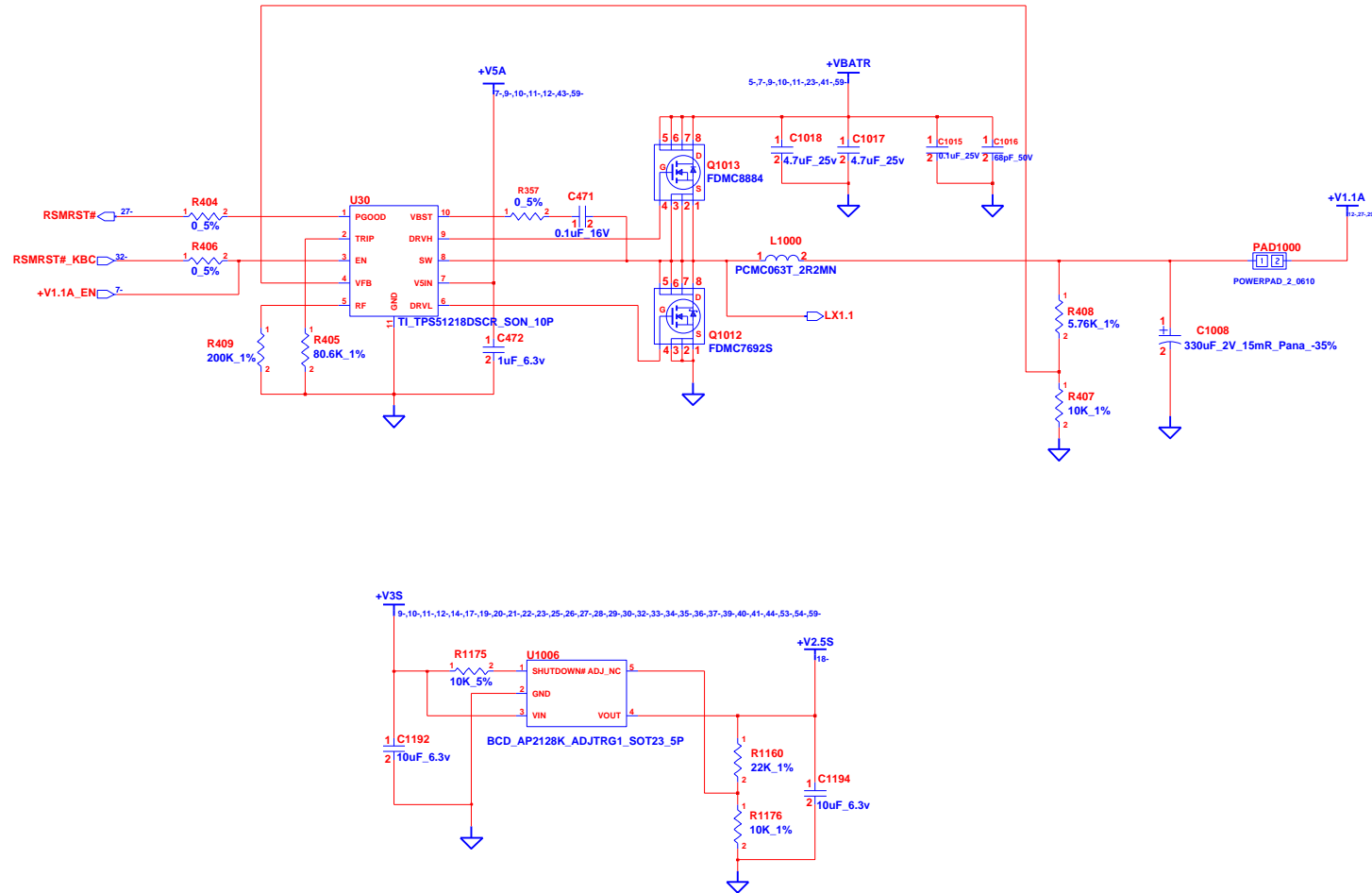
INVENTEC			
TITLE			
SS11- POLICE 14"			
SELECT & BATTERY CONN			
SIZE	CODE	DOC. NUMBER	REV
A3	CS	1310A24171-0-MTR	AXI
CHANGE by		Drawer Name	26-Jan-2011
SHEET		6	OF 59



**INVENTEC**

TITLE			
SS11- POLICE 14"			
+V3.3A & +V5A			
SIZE	CODE	DOC. NUMBER	REV
A3	CS	1310A24171-0-MTR	AXI
SHEET		7	OF 59

CHANGE by: Drawer Name 26-Jan-2011



INVENTEC			
TITLE SS11- POLICE 14" SYSTEM POWER(+V1.1A/+V2.5S)			
SIZE A3	CODE CS	DOC. NUMBER 1310A24171-0-MTR	REV AXI
CHANGE by Drawer Name		26-Jan-2011	SHEET 8 OF 59



**NOTE: DDR3 REGULATOR**

INVENTEC			
TITLE: SS11- POLICE 14"			
DDR3 POWER (+V1.5/+V0.75S)			
SIZE	CODE	DOC. NUMBER	REV
A3	CS	I310A24171-0-MTR	AX1
SHEET		9	OF 59

CHANGE: by *Drawer Name* 26-Jan-2011

**NOTE: DDR3 REGULATOR**

INVENTEC			
TITLE: SS11- POLICE 14"			
DDR3 POWER (+V1.5/+V0.75S)			
SIZE	CODE	DOC. NUMBER	REV
A3	CS	I310A24171-0-MTR	AX1
SHEET		9	OF 59

CHANGE by: *Drawer Name* 26-Jan-2011

**NOTE: DDR3 REGULATOR**

INVENTEC			
TITLE: SS11- POLICE 14"			
DDR3 POWER (+V1.5/+V0.75S)			
SIZE	CODE	DOC. NUMBER	REV
A3	CS	I310A24171-0-MTR	AX1
SHEET		9	OF 59

CHANGE by: *Drawer Name* 26-Jan-2011

**NOTE: DDR3 REGULATOR**

INVENTEC			
TITLE: SS11- POLICE 14"			
DDR3 POWER (+V1.5/+V0.75S)			
SIZE	CODE	DOC. NUMBER	REV
A3	CS	I310A24171-0-MTR	AX1
SHEET 9		OF 59	

CHANGE by: *Drawer Name* 26-Jan-2011

**NOTE: DDR3 REGULATOR**

INVENTEC			
TITLE: SS11- POLICE 14"			
DDR3 POWER (+V1.5/+V0.75S)			
SIZE	CODE	DOC. NUMBER	REV
A3	CS	I310A24171-0-MTR	AX1
SHEET 9		OF 59	

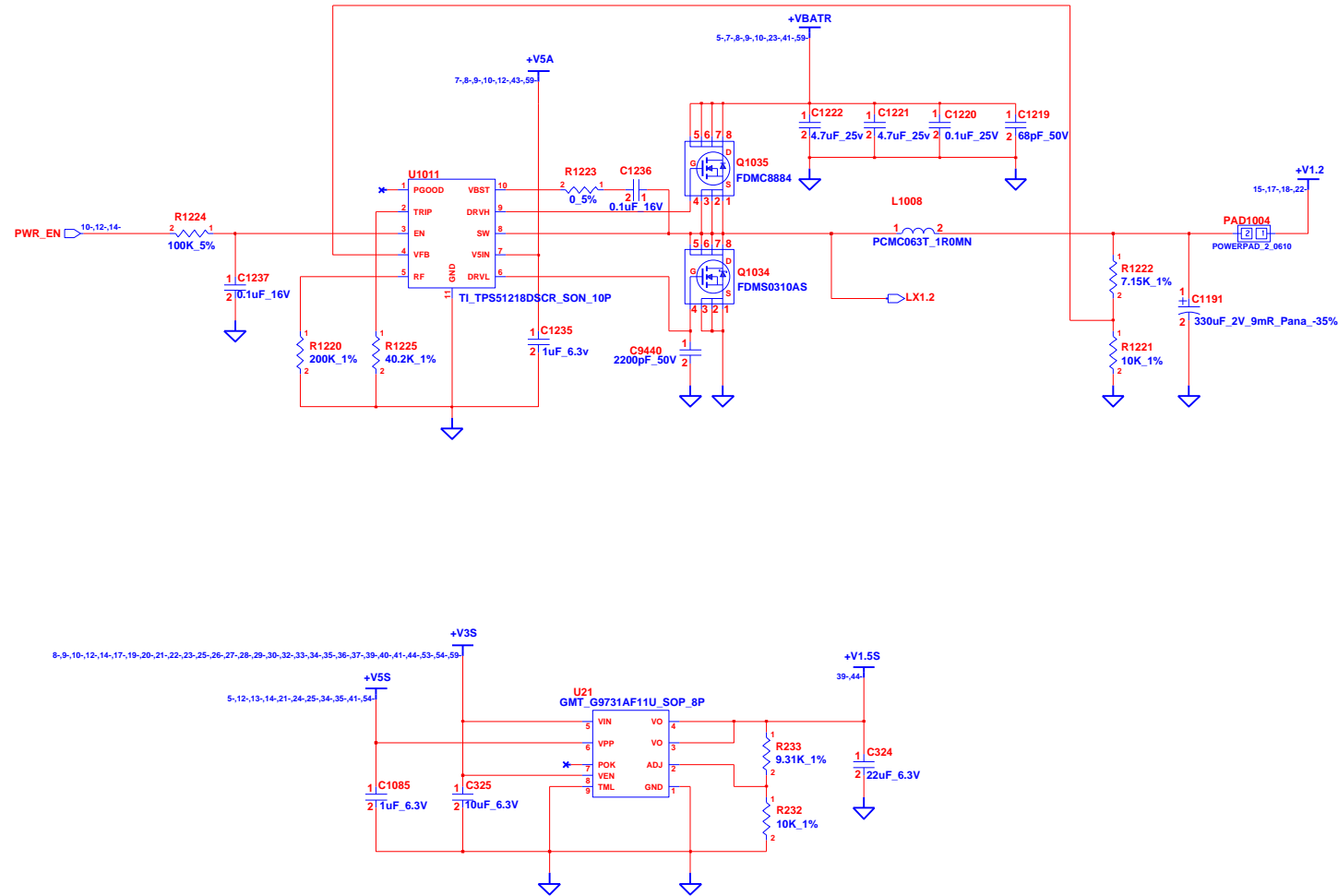
CHANGE by: *Drawer Name* 26-Jan-2011

**NOTE: DDR3 REGULATOR**

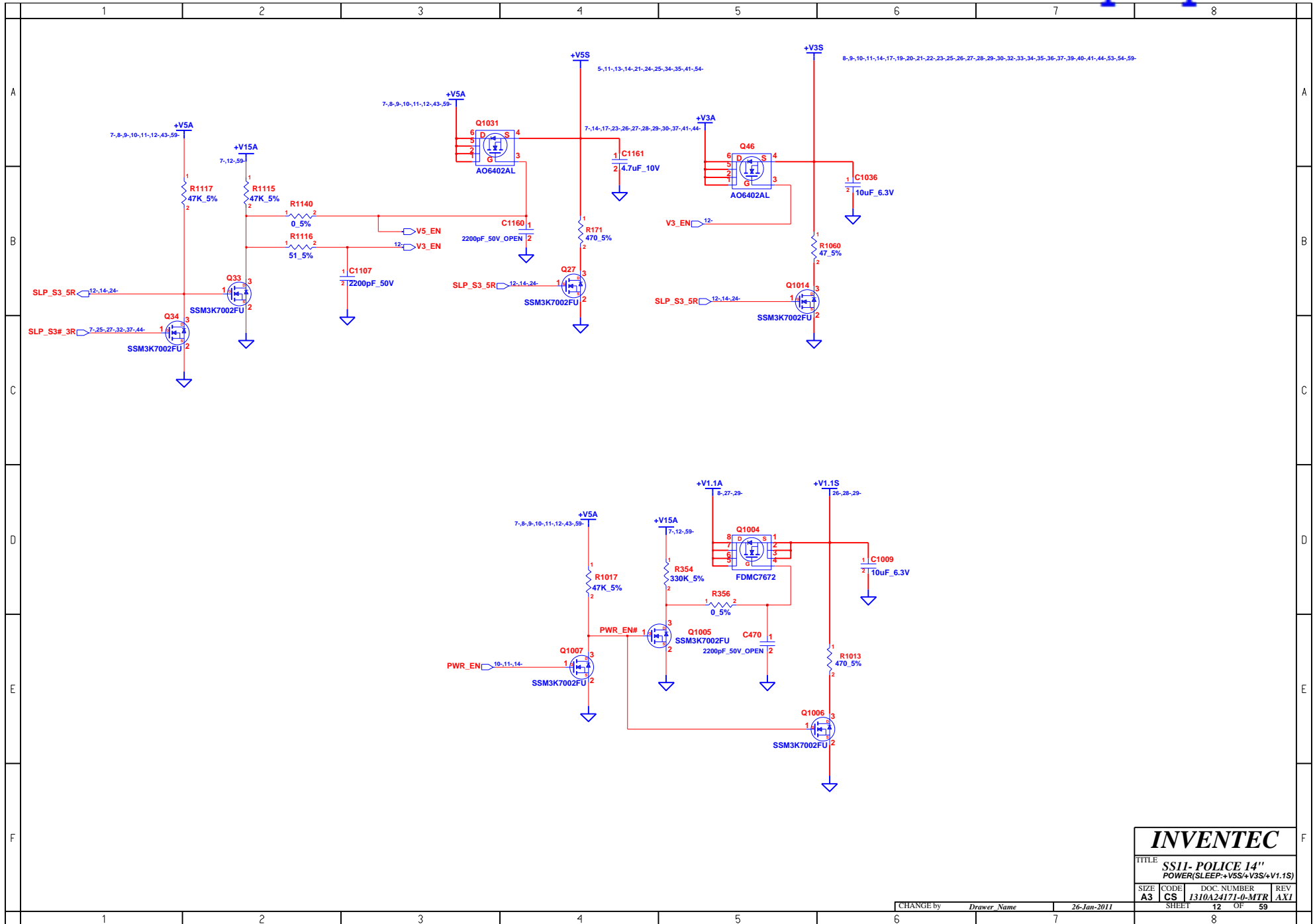
INVENTEC			
TITLE: SS11- POLICE 14"			
DDR3 POWER (+V1.5/+V0.75S)			
SIZE	CODE	DOC. NUMBER	REV
A3	CS	I310A24171-0-MTR	AX1
SHEET 9		OF 59	

CHANGE by: *Drawer Name* 26-Jan-2011

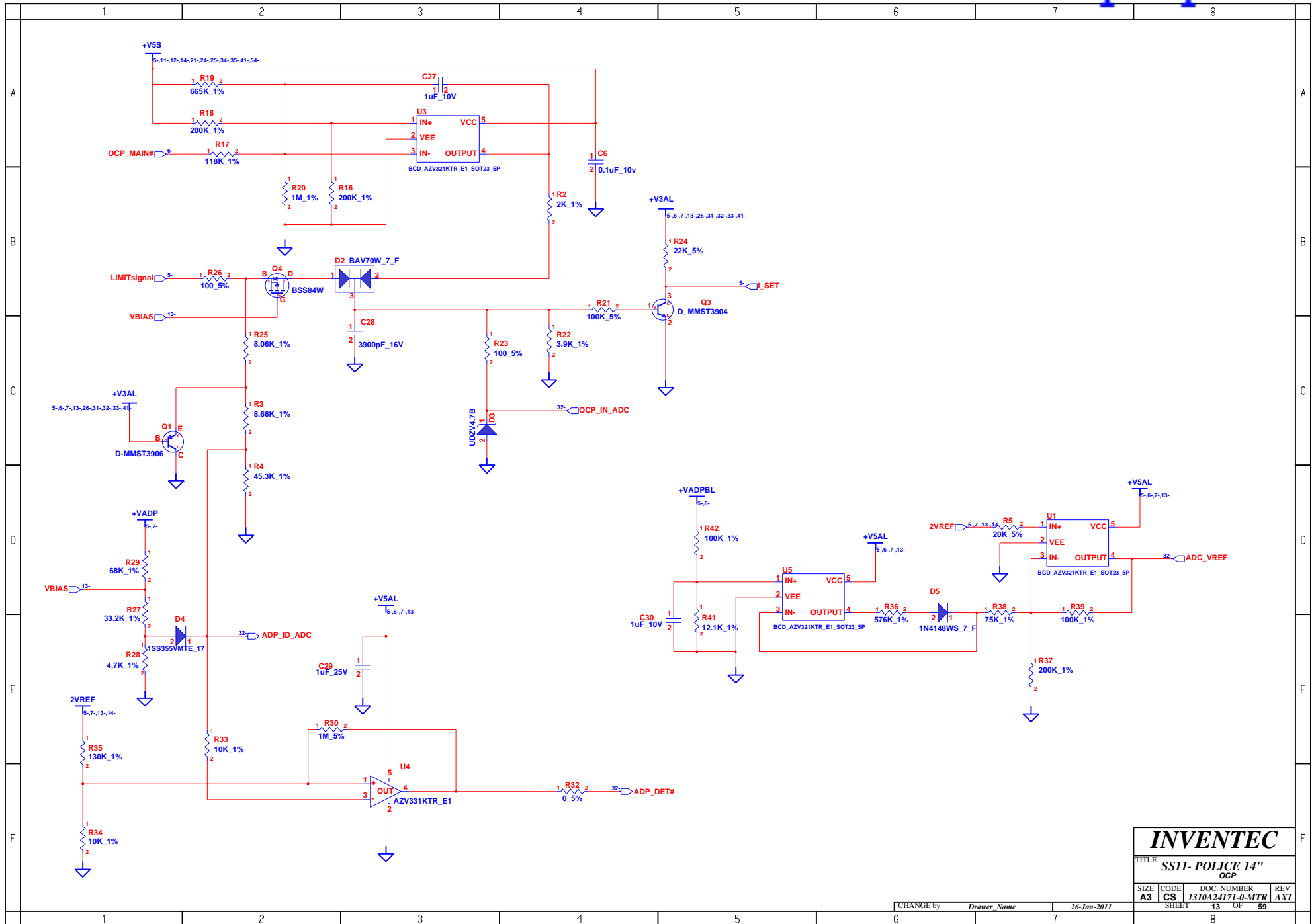
TITLE			
SS11- POLICE 14"			
APU POWER(VDD/VDDNB)			
SIZE	CODE	DOC. NUMBER	REV
A3	CS	1310A24171-0-MTR	AX1
SHEET		10	OF 59



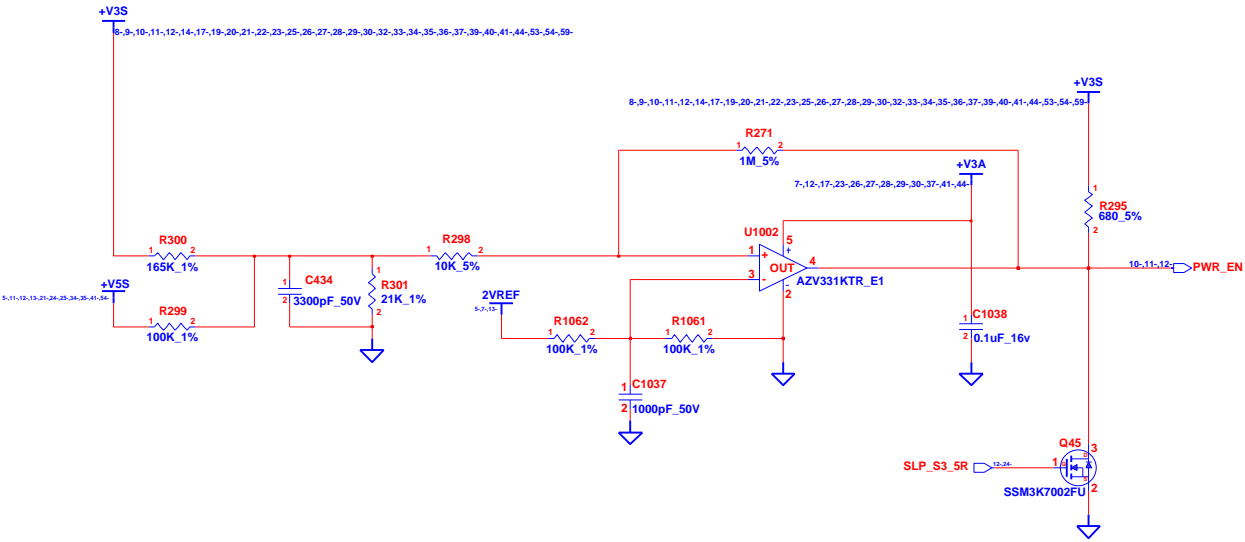
INVENTEC			
TITLE SS11- POLICE 14"			
SYSTEM POWER VDDP,VDDR(+V1.2)			
SIZE A3	CODE CS	DOC. NUMBER 1310A24171-0-MTR	REV AXI
CHANGE by Drawer Name		26-Jan-2011	
SHEET 11		OF 59	



INVENTEC			
TITLE: SS11- POLICE 14"			
POWER(SLEEP:+V5S/+V3S/+V1.1S)			
SIZE	CODE	DOC. NUMBER	REV
A3	CS	1310A24171-0-MTR	AX1
CHANGE by		Drawer Name	26-Jan-2011
SHEET		12	OF 59



INVENTEC			
TITLE SS11- POLICE 14" OCP			
SIZE A3	CODE CS	DOC. NUMBER 1310A24171-0-MTR	REV AX1
CHANGE by Drawer Name		26-Jan-2011	SHEET 13 OF 59



**INVENTEC**

TITLE  
**SS11- POLICE 14"**  
POWER(SEQUENCE)

SIZE	CODE	DOC. NUMBER	REV
A3	CS	1310A24171-0-MTR	AXI

SHEET 14 OF 59

CHANGE by *Drawer Name* 26-Jan-2011

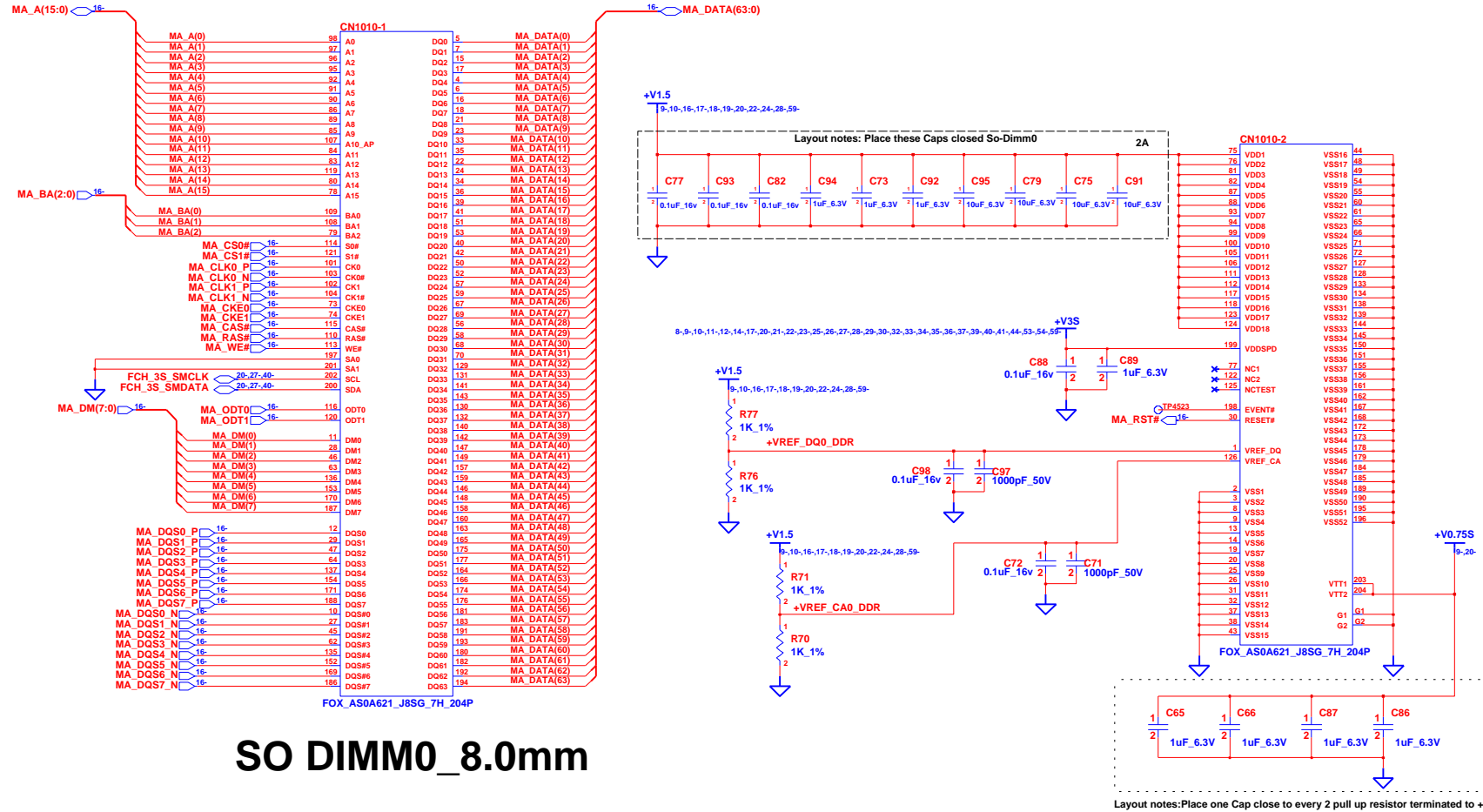












SO DIMM0\_8.0mm

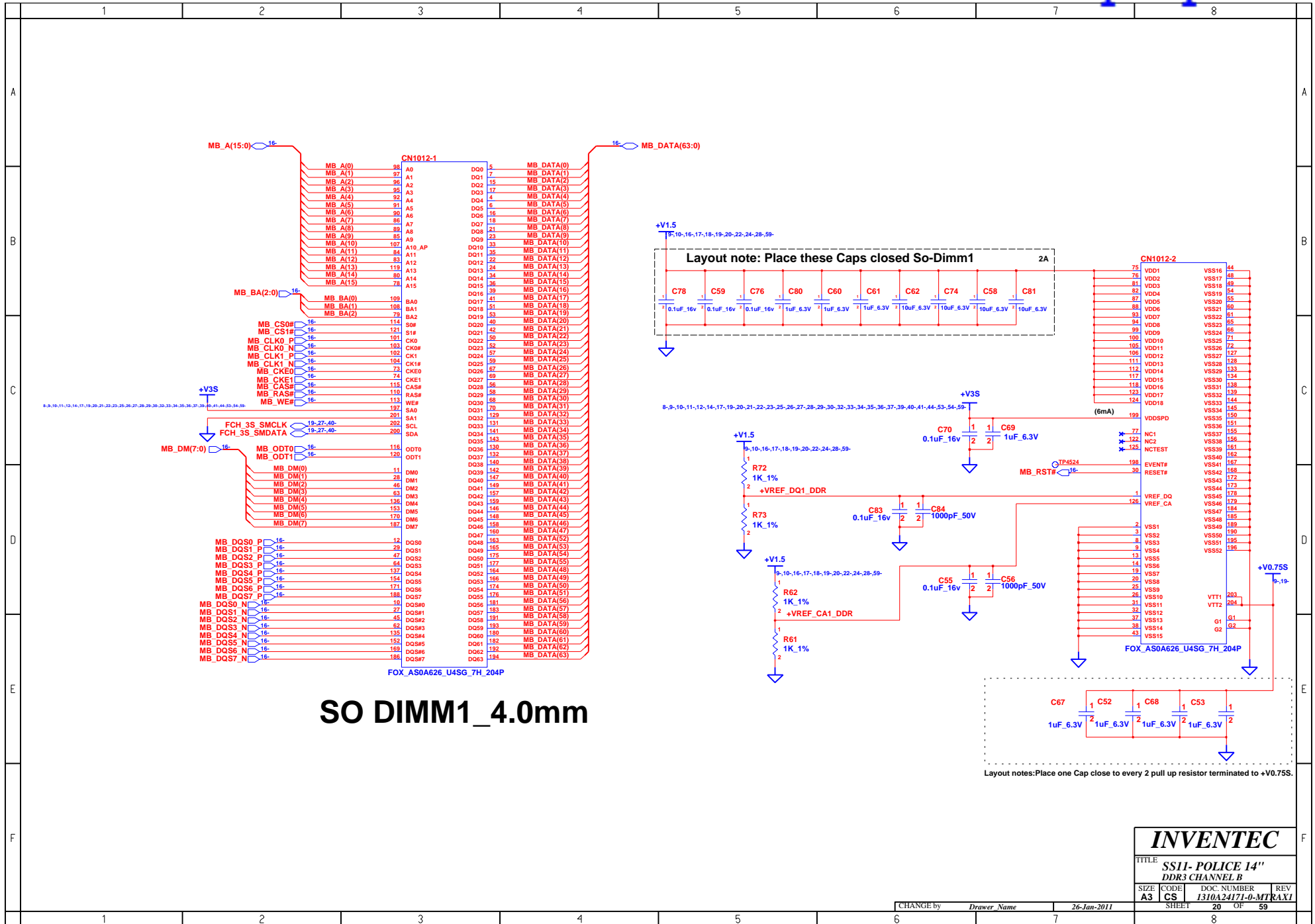
**INVENTEC**

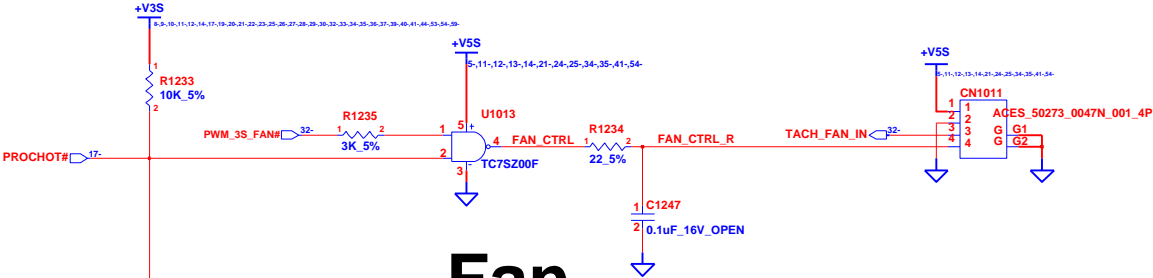
TITLE: **SS11- POLICE 14"**  
DDR3 CHANNEL A

SIZE	CODE	DOC. NUMBER	REV
A3	CS	1310A24171-0-MTRAXI	

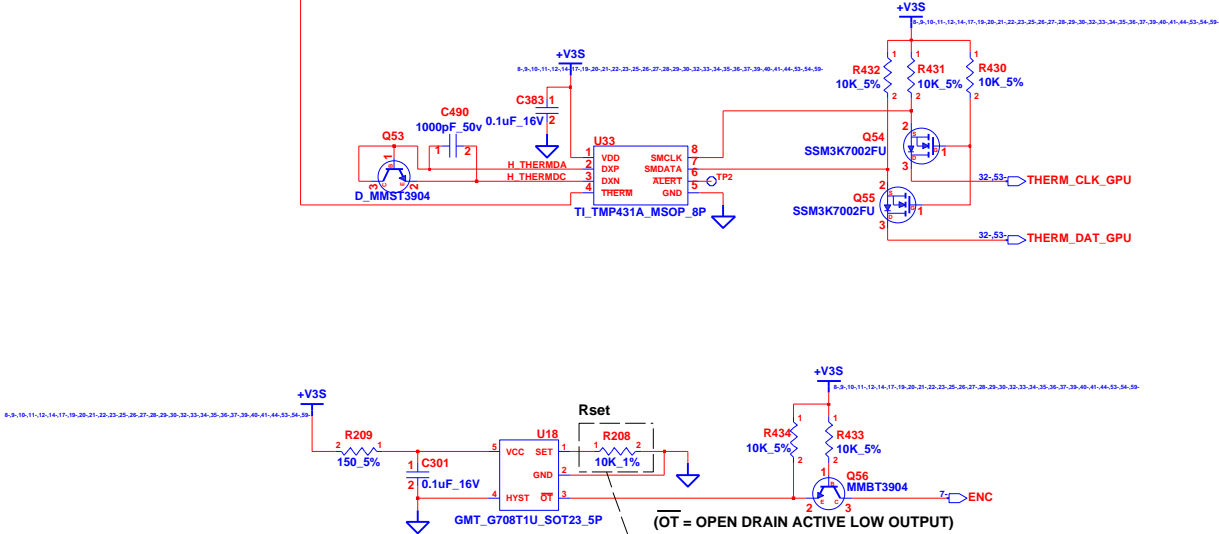
CHANGE by: *Drawer Name* 26-Jan-2011

SHEET 19 OF 59





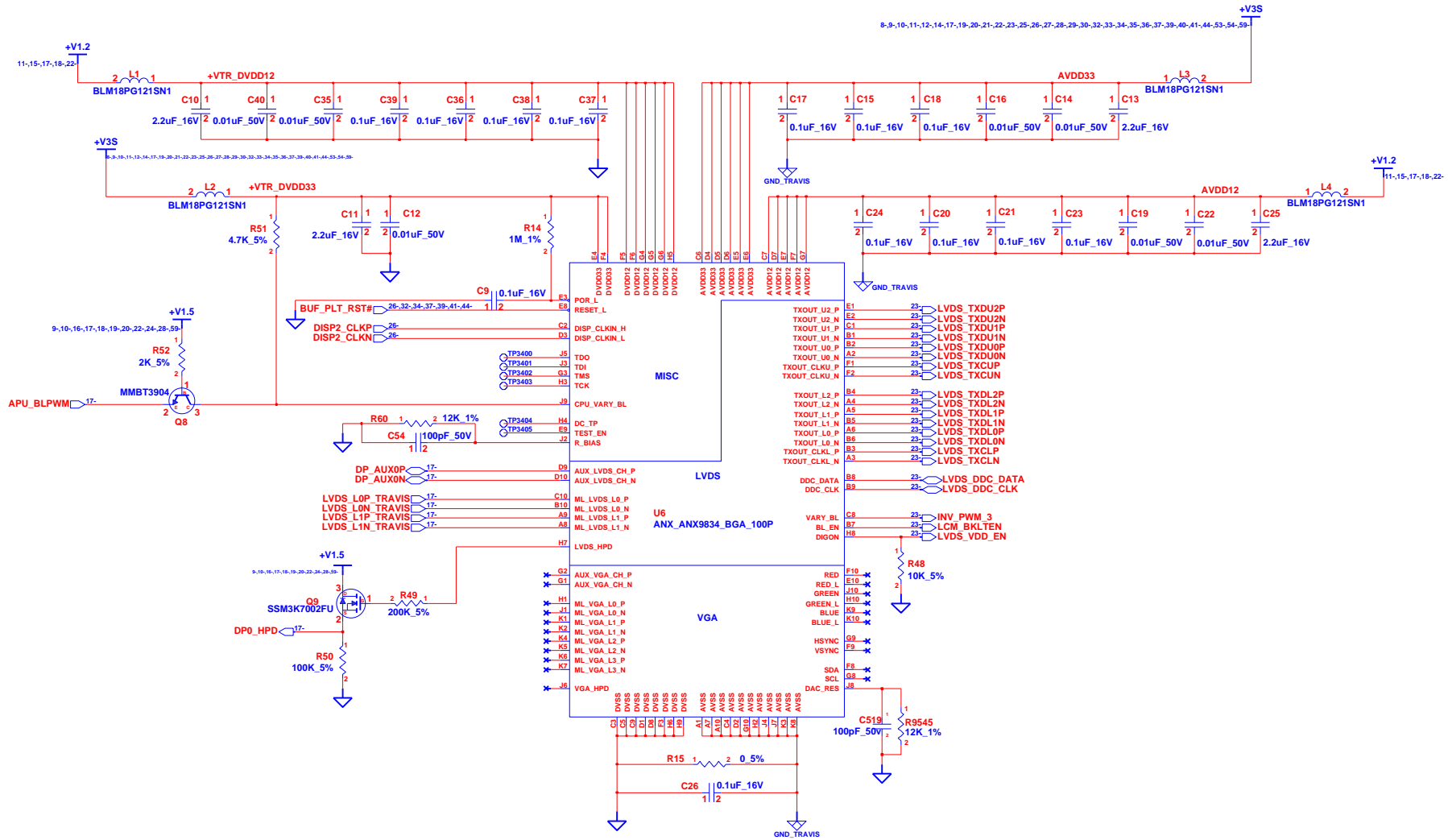
# Fan



Thermal shutdown at 110 °C  
 $R_{set} (K\ ohm) = 0.0012T^2 - 0.9308T + 96.147$   
(85 °C: 24Kohm)

# Temperature switch

INVENTEC			
TITLE SS11- POLICE 14"			
Thermal & Fan			
SIZE A3	CODE CS	DOC. NUMBER I310A24171-0-MTRAXI	REV 1
SHEET		21	OF 59



# Travis (DP to LVDS)

**INVENTEC**

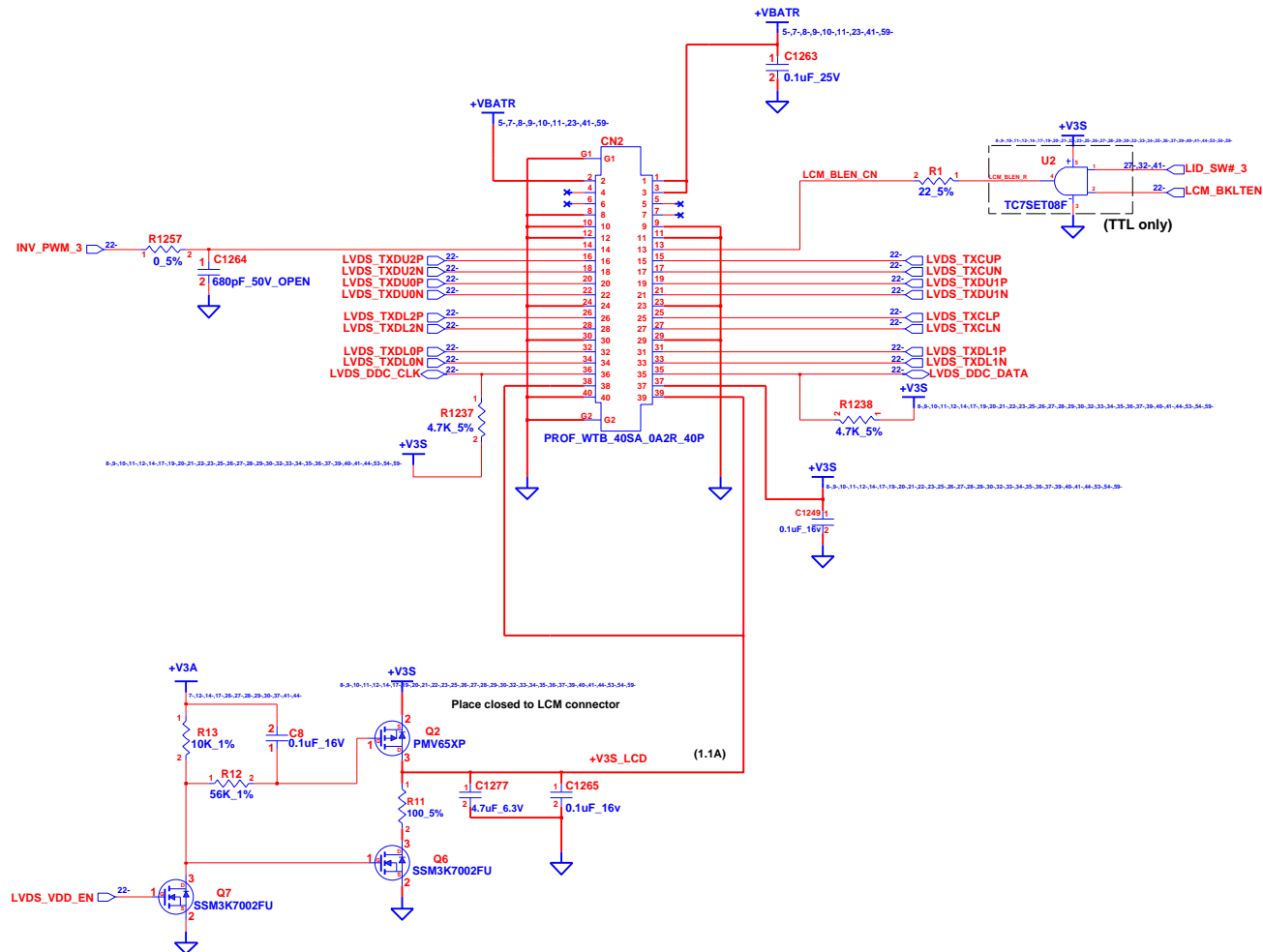
TITLE  
SS11- POLICE 14"  
Travis (DP to LVDS)

SIZE A3	CODE CS	DOC. NUMBER I310A24171-0-MTRAXI	REV 1
------------	------------	------------------------------------	----------

CHANGE by *Drawer Name* 26-Jan-2011

SHEET 22 OF 59

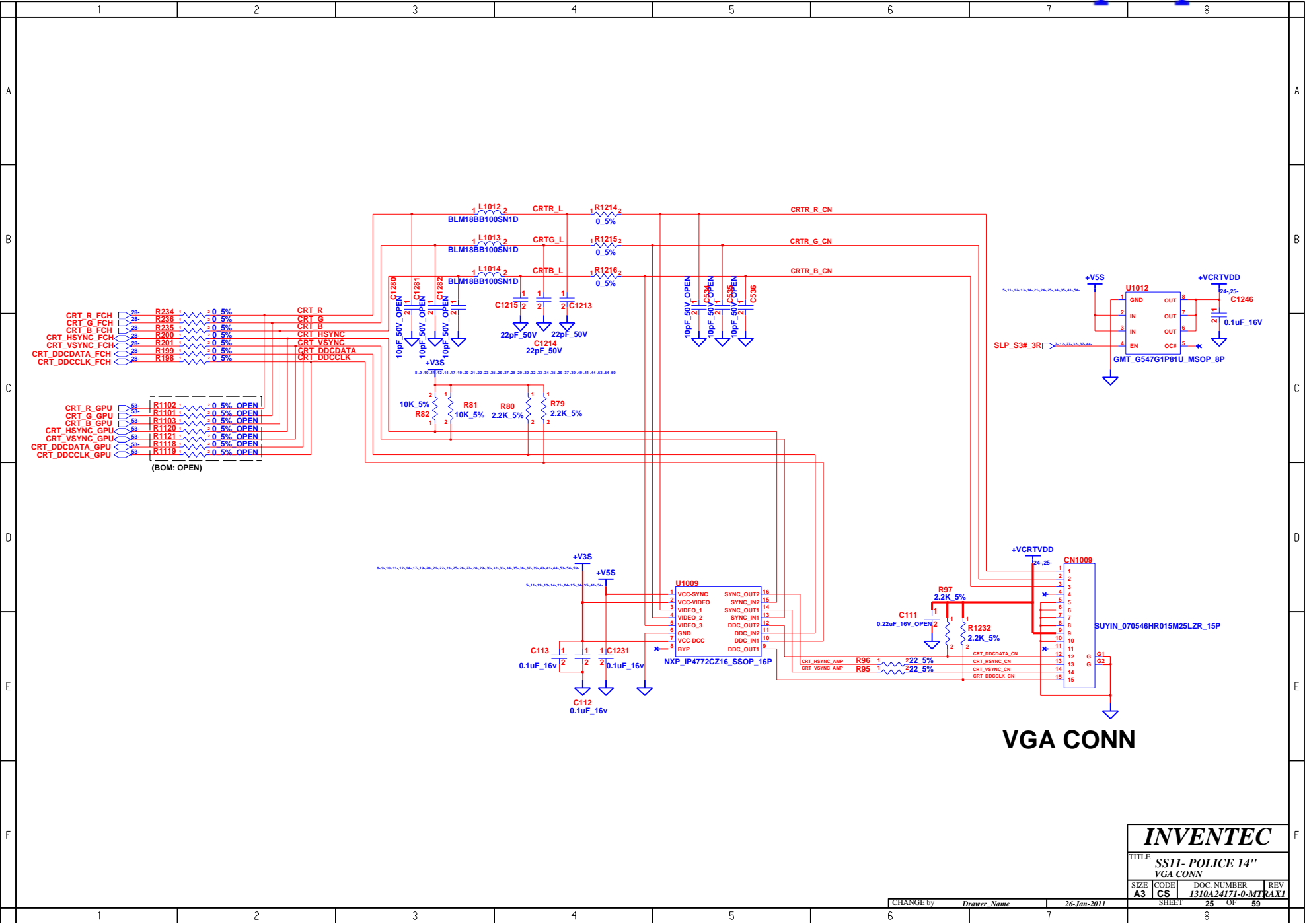
# LCD

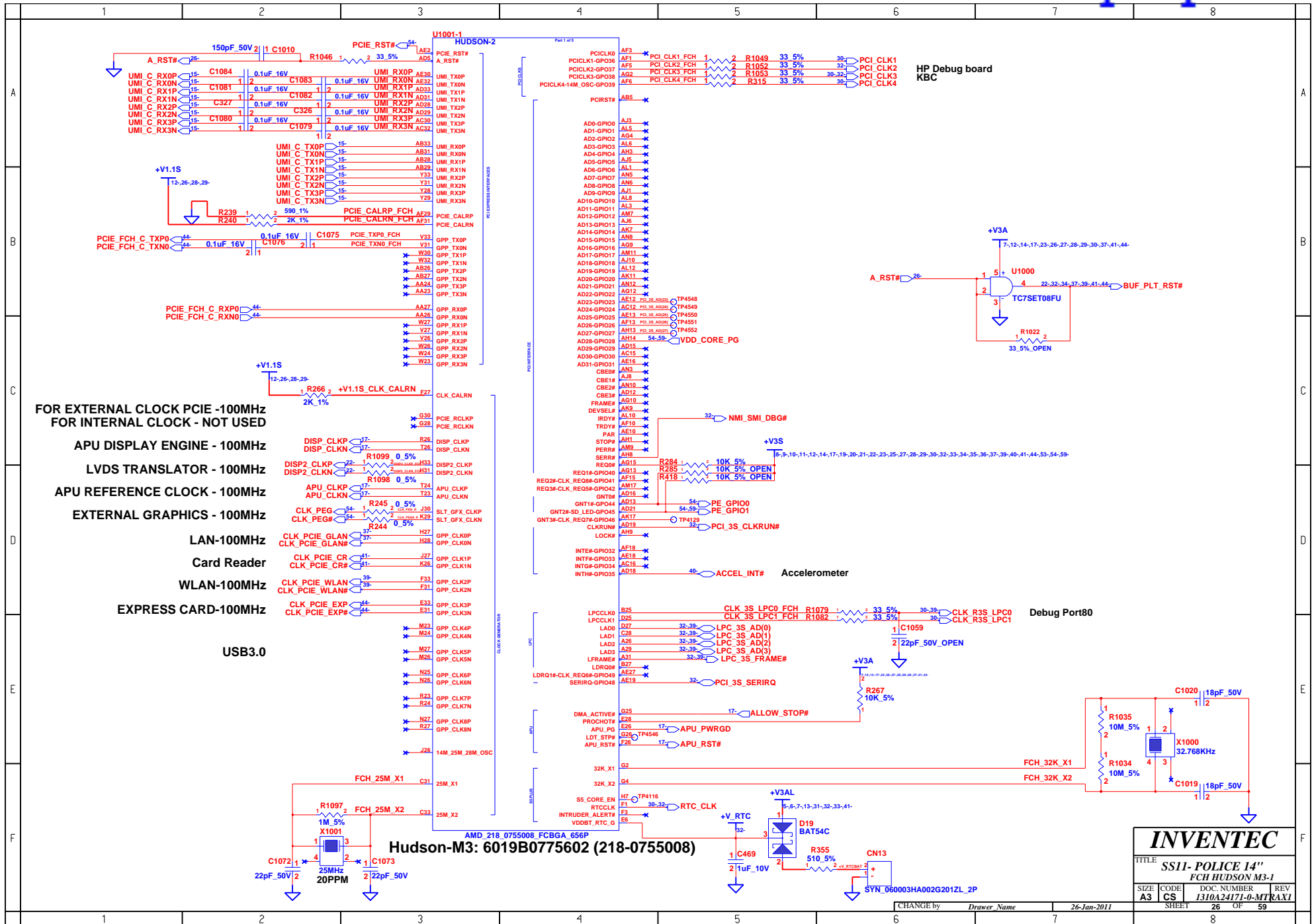


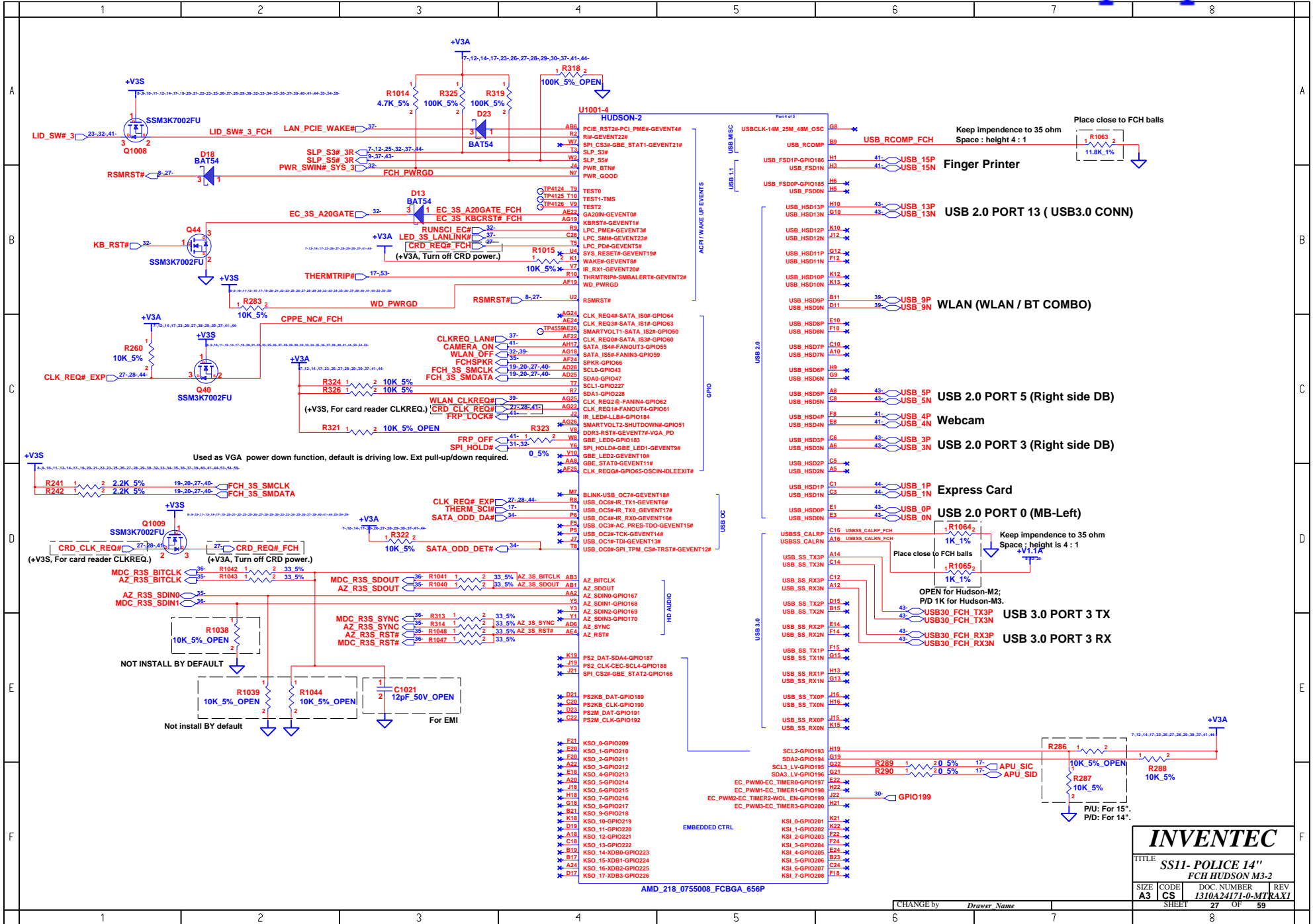
INVENTEC			
TITLE SS11- POLICE 14" LCD			
SIZE A3	CODE CS	DOC. NUMBER 1310A24171-0-MTRAXI	REV
CHANGE by		26-Jan-2011	
SHEET 23		OF 59	

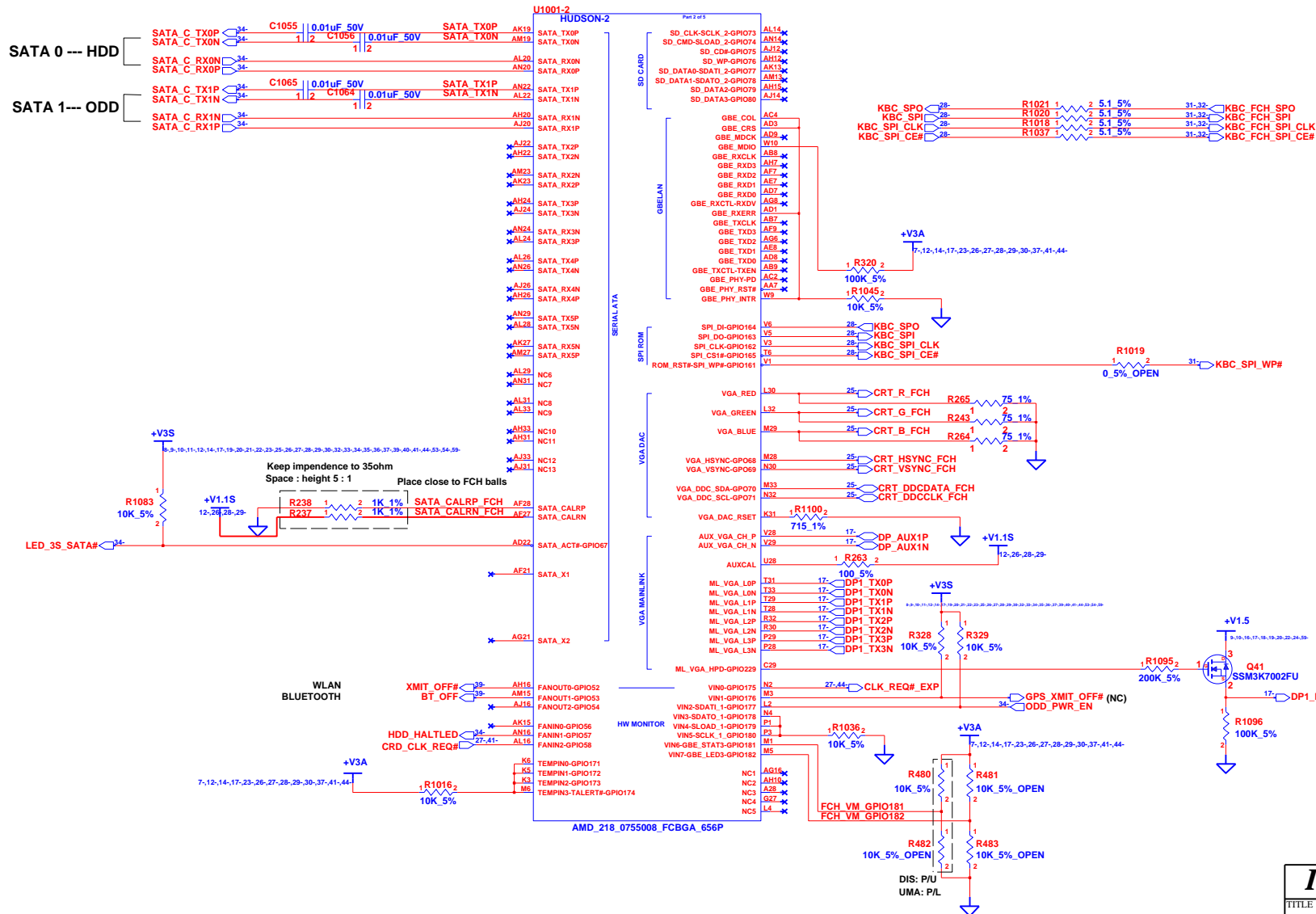


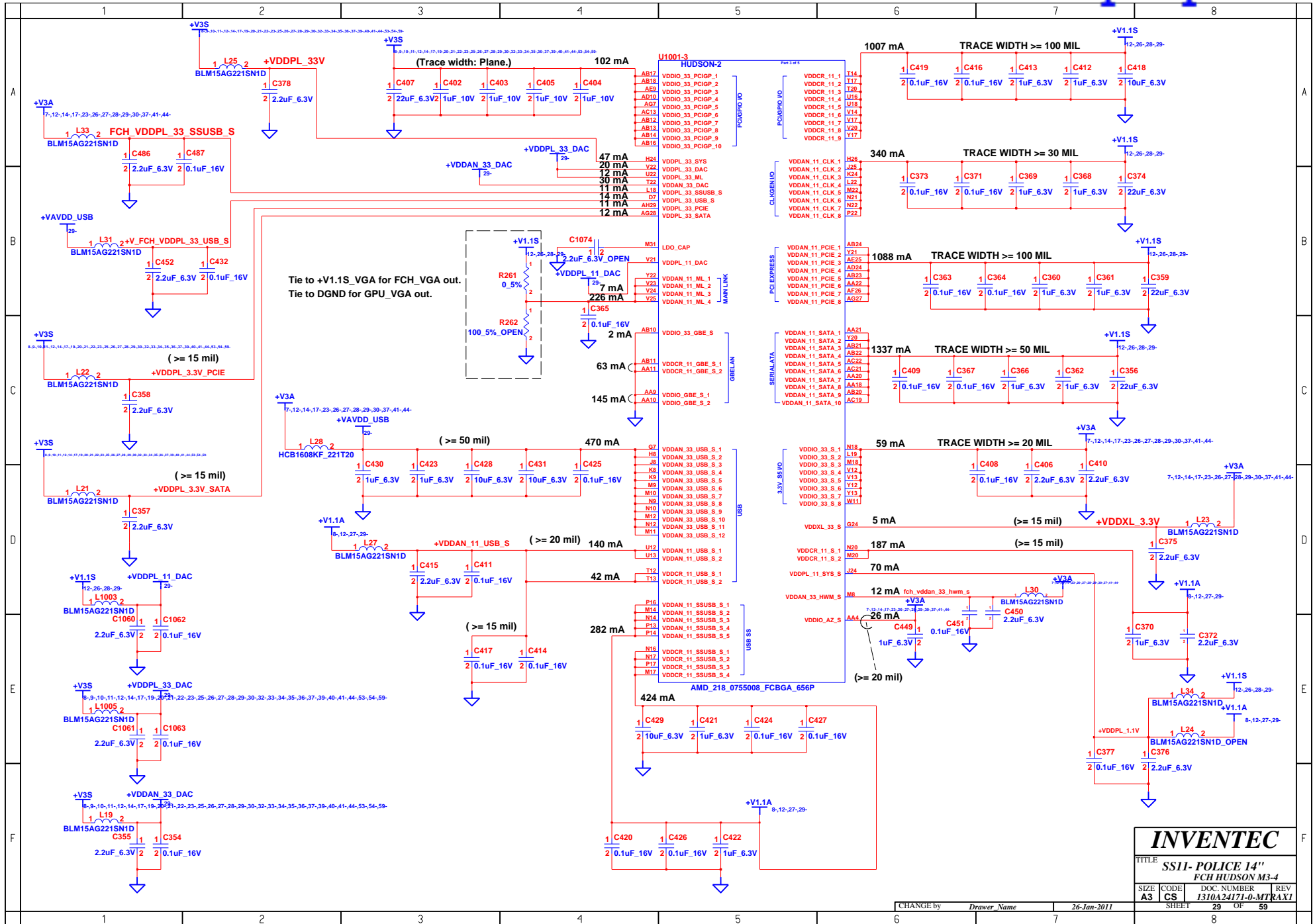


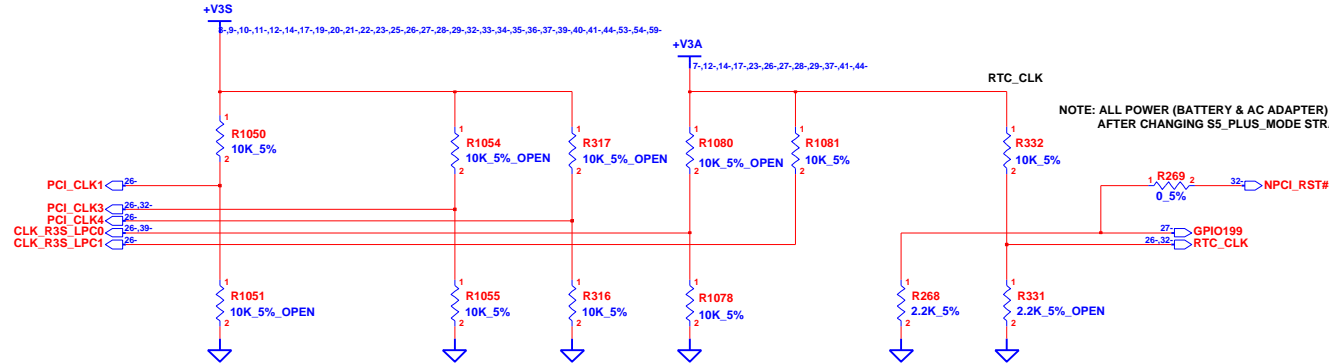












### Required Straps:

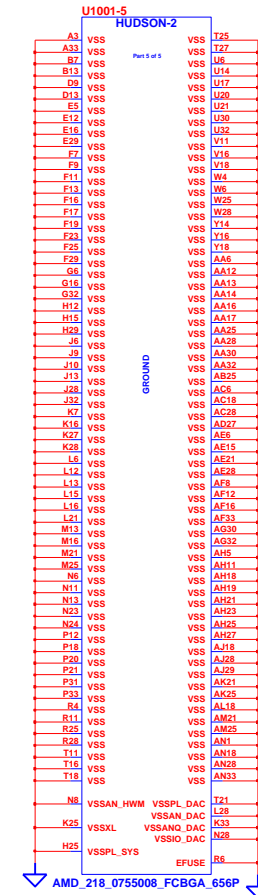
	PCI_CLK1	PCI_CLK3	PCI_CLK4	LPC_CLK0	LPC_CLK1	(GPIO199) EC_PWM2	RTC_CLK
<b>PULL HIGH</b>	ALLOW PCIe Gen2 (default)	USE DEBUG STRAP	non_Fusion CLOCK MODE	EC ENABLED	CLKGEN ENABLED (Internal) (default)	LPC ROM	S5 Plus mode DISABLE (default)
<b>PULL LOW</b>	FORCE PCIe Gen1	IGNORE DEBUG STRAP (default)	FUSION CLOCK MODE (default)	EC DISABLED (default)	CLKGEN DISABLED	SPI ROM (default)	S5 Plus mode ENABLE

(PCI\_3S\_AD(27..23): No connected.)

### Debug Straps

FCH HAS 15K INTERNAL PU FOR PCI\_AD[27:23]

	PCI_3S_AD(27)	PCI_3S_AD(26)	PCI_3S_AD(25)	PCI_3S_AD(24)	PCI_3S_AD(23)
<b>PULL HIGH</b>	USE PCI PLL (default)	DISABLE ILA AUTORUN (default)	USE FC PLL (default)	USE DEFAULT PCIE STRAPS (default)	DISABLE PCI MEM BOOT (default)
<b>PULL LOW</b>	BYPASS PCI PLL	ENABLE ILA AUTORUN	BYPASS FC PLL	USE EEPROM PCIE STRAPS	ENABLE PCI MEM BOOT



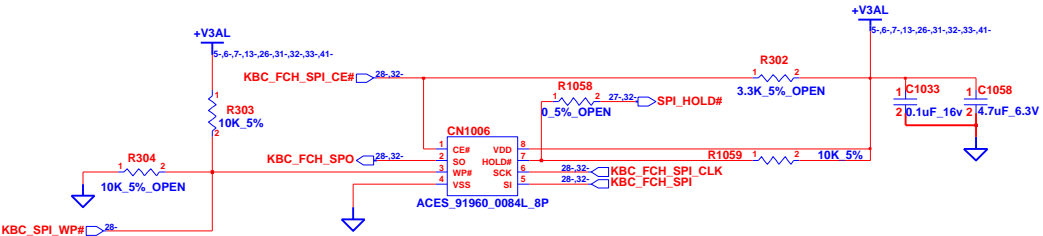
**INVENTEC**

TITLE  
**SS11- POLICE 14"**  
**FCH HUDSON M3-5**

SIZE CODE DOC. NUMBER REV  
**A3 CS 1310A24171-0-MTRAXI**

CHANGE by *Drawer Name* 26-Jan-2011

SHEET 30 OF 59



# SPI Flash

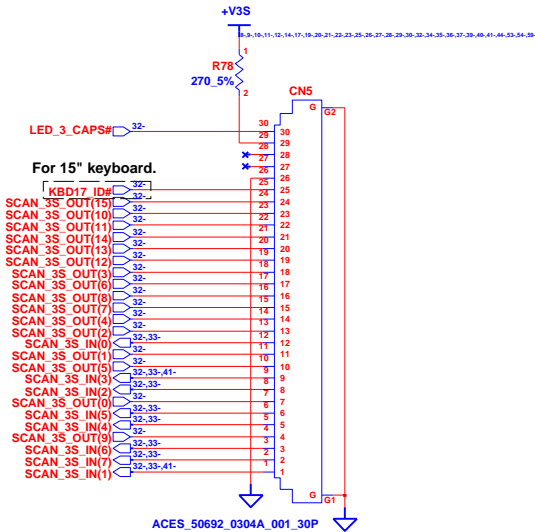
SPI Socket P/N:6026B0150101  
SPI ROM P/N:6019B0614401

INVENTEC			
TITLE SS11- POLICE 14"			
BIOS ROM (SPI)			
SIZE	CODE	DOC. NUMBER	REV
A3	CS	I310A24171-0-MTRAX1	

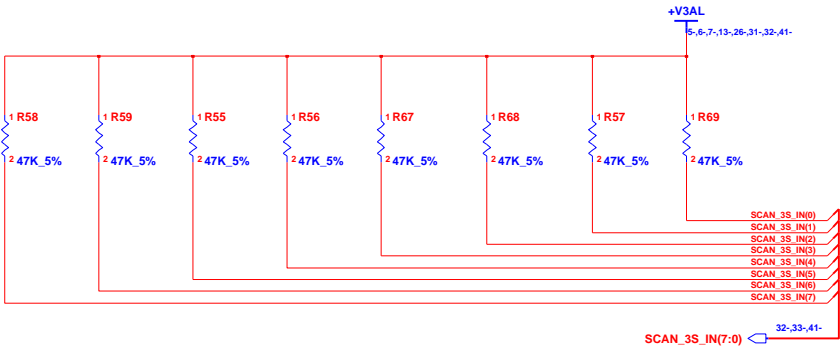
CHANGE by	Drawer Name	26-Jan-2011
SHEET	31	OF 59



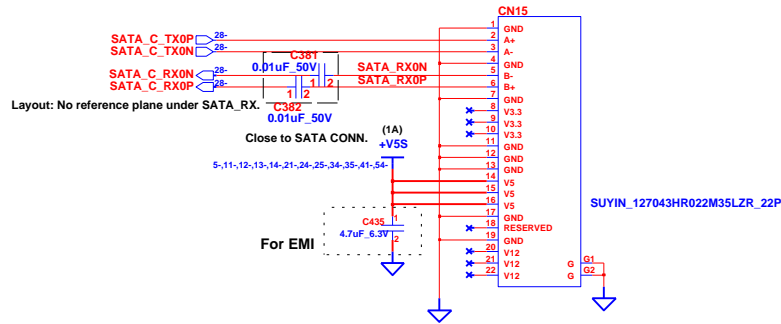




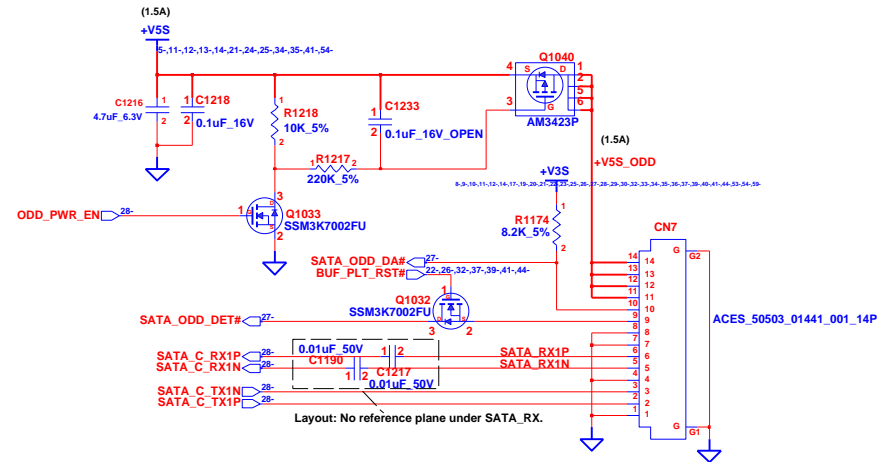
# Keyboard CONN



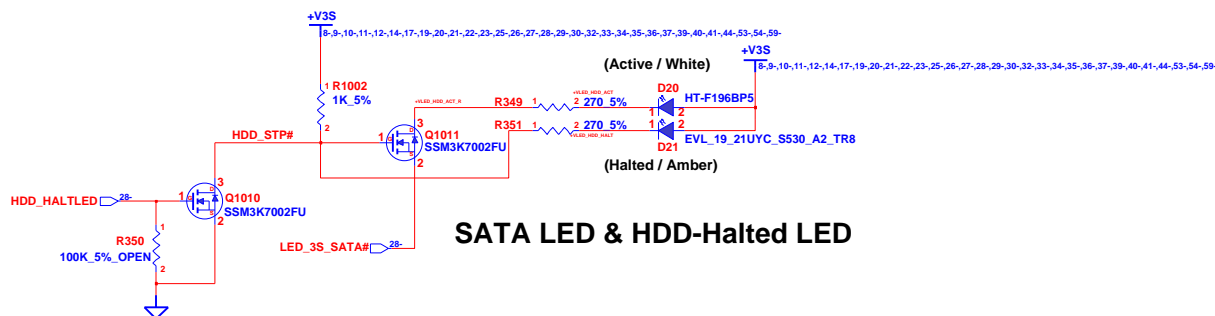
INVENTEC			
TITLE SS11- POLICE 14"			
Keyboard & TouchPad CONN			
SIZE A3	CODE CS	DOC. NUMBER 1310A24171-0-MTRAXI	REV
CHANGE by		Drawer Name	26-Jan-2011
SHEET		33	OF 59



## SATA HDD



## SATA ODD

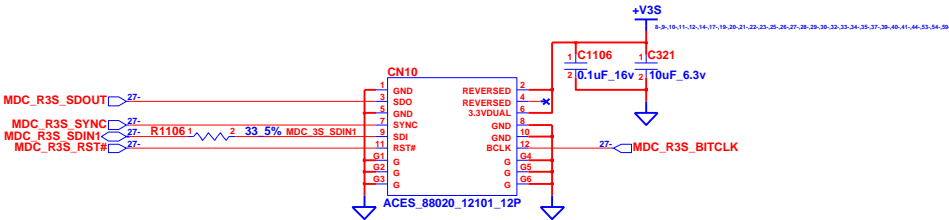


## SATA LED & HDD-Halted LED

INVENTEC			
TITLE SS11- POLICE 14"			
SATA HDD & ODD CONN			
SIZE A3	CODE CS	DOC. NUMBER I310A24171-0-MTRAXI	REV
SHEET 34		OF 59	

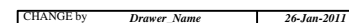
CHANGE by Drawer Name 26-Jan-2011





MODEM

INVENTEC			
TITLE SS11- POLICE 14" MDC CONN			
SIZE A3	CODE CS	DOC. NUMBER I310A24171-0-MTRAXI	REV
CHANGE by Drawer Name		26-Jan-2011	
SHEET 36		OF 59	



TITLE	<b><i>SS11- POLICE 14"</i></b> <b>Transformer &amp; RJ45 CONN</b>
-------	--

SIZE <b>A3</b>	CODE <b>CS</b>	DOC. NUMBER <b>1310A24171-0-MTRAX1</b>	REV
SHEET		38	OF 59

CHANGE by	<i>Drawer Name</i>	<i>26-Jan-2011</i>
-----------	--------------------	--------------------

TITLE			
<b><i>SS11- POLICE 14"</i></b> <b><i>MINI CARD (WLAN)</i></b>			
SIZE	CODE	DOC. NUMBER	REV
<b>A3</b>	<b>CS</b>	<b>1310A24171-0-MTRAXI</b>	
SHEET		39	OF 59

CHANGE by	<i>Drawer Name</i>	26-Jan-2011
-----------	--------------------	-------------

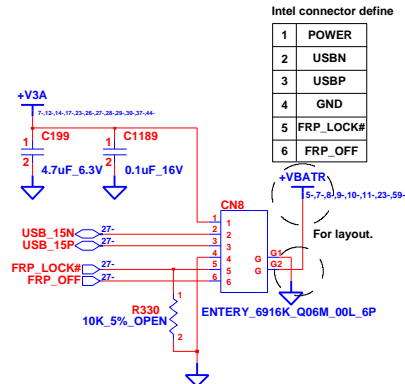
CS 1310A24171-0-M1A  
SHEET 39 OF 59

# Accelerometer

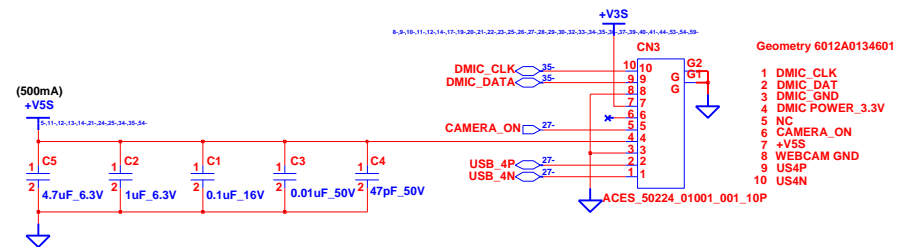
<b>INVENTEC</b>			
TITLE <b>SSI1- POLICE 14"</b> <b>ACCELEROMETER</b>			
SIZE <b>A3</b>	CODE <b>CS</b>	DOC. NUMBER <b>1310A24171-0-MTRAX1</b>	REV
SHEET <b>40</b>		OF <b>59</b>	



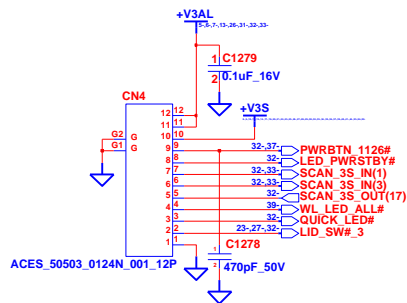
## Finger Printer CONN



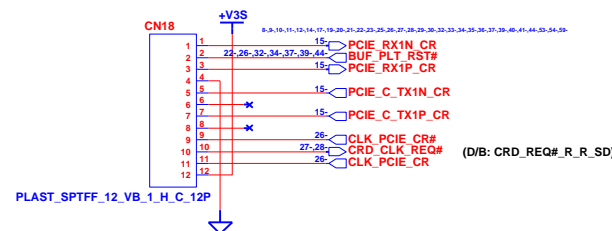
## DMIC / WebCAM



## PWR & Quick Launch B/B CONN



## CardReader B/B CONN

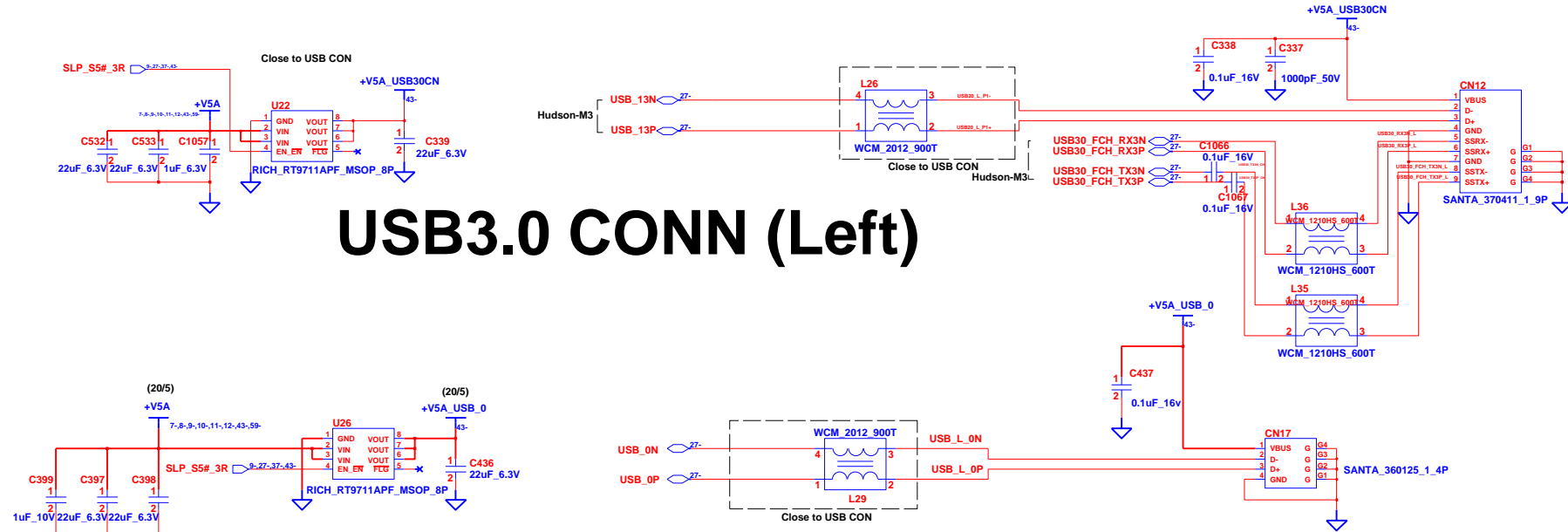


INVENTEC			
TITLE SS11- POLICE 14"			
PWR & FP & Launch & Web/DMIC CONN			
SIZE A3	CODE CS	DOC. NUMBER I310A24171-0-MTRAX1	REV
CHANGE by		Drawer Name	26-Jan-2011
SHEET		41	OF 59

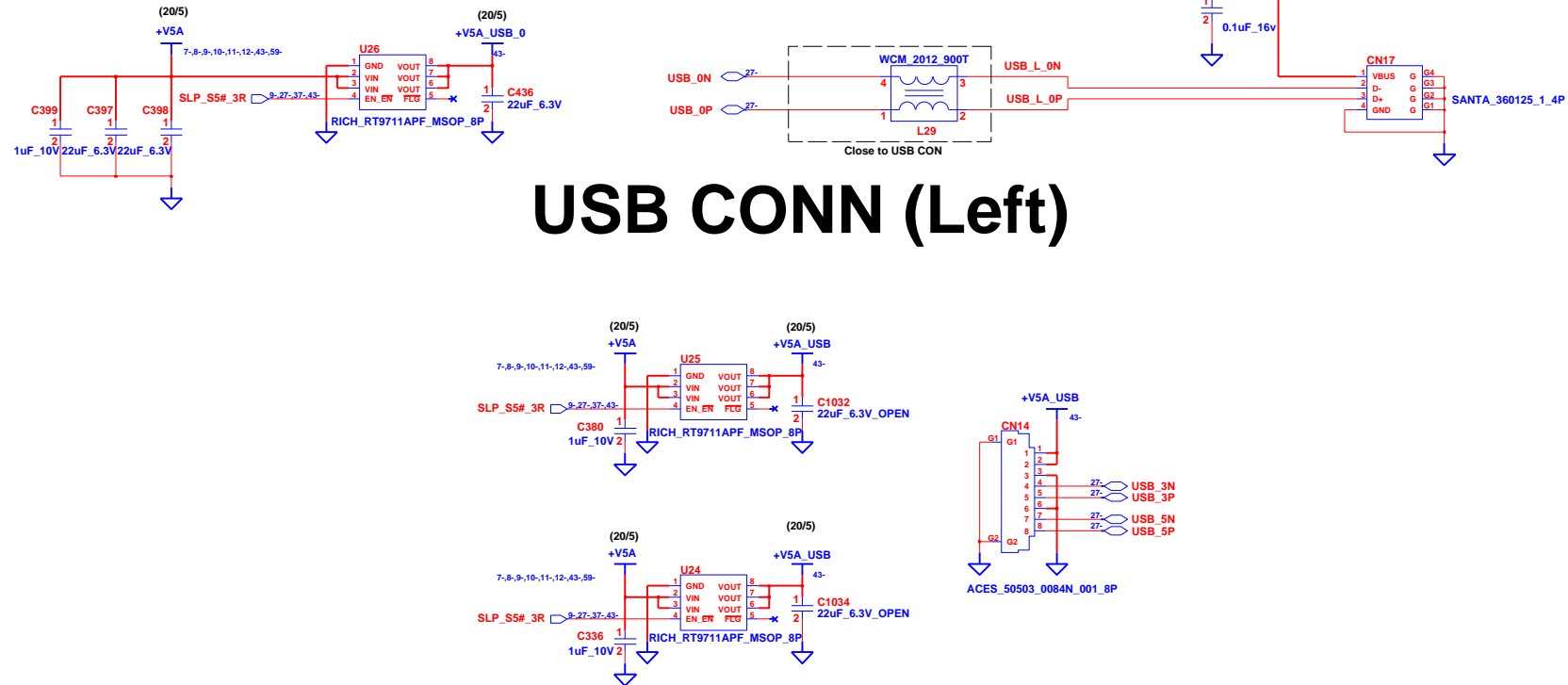
	1	2	3	4	5	6	7	8	
A	<div>Blank</div>								A
B									B
C									C
D									D
E									E
F									F
	1	2	3	4	5	6	7	8	

<b>INVENTEC</b>			
TITLE <b>SS11- POLICE 14"</b> <b>Blank</b>			
SIZE	CODE	DOC. NUMBER	REV
<b>A3</b>	<b>CS</b>	<b>I310A24171-0-MTRAX1</b>	
SHEET		42	OF 59

## USB3.0 CONN (Left)

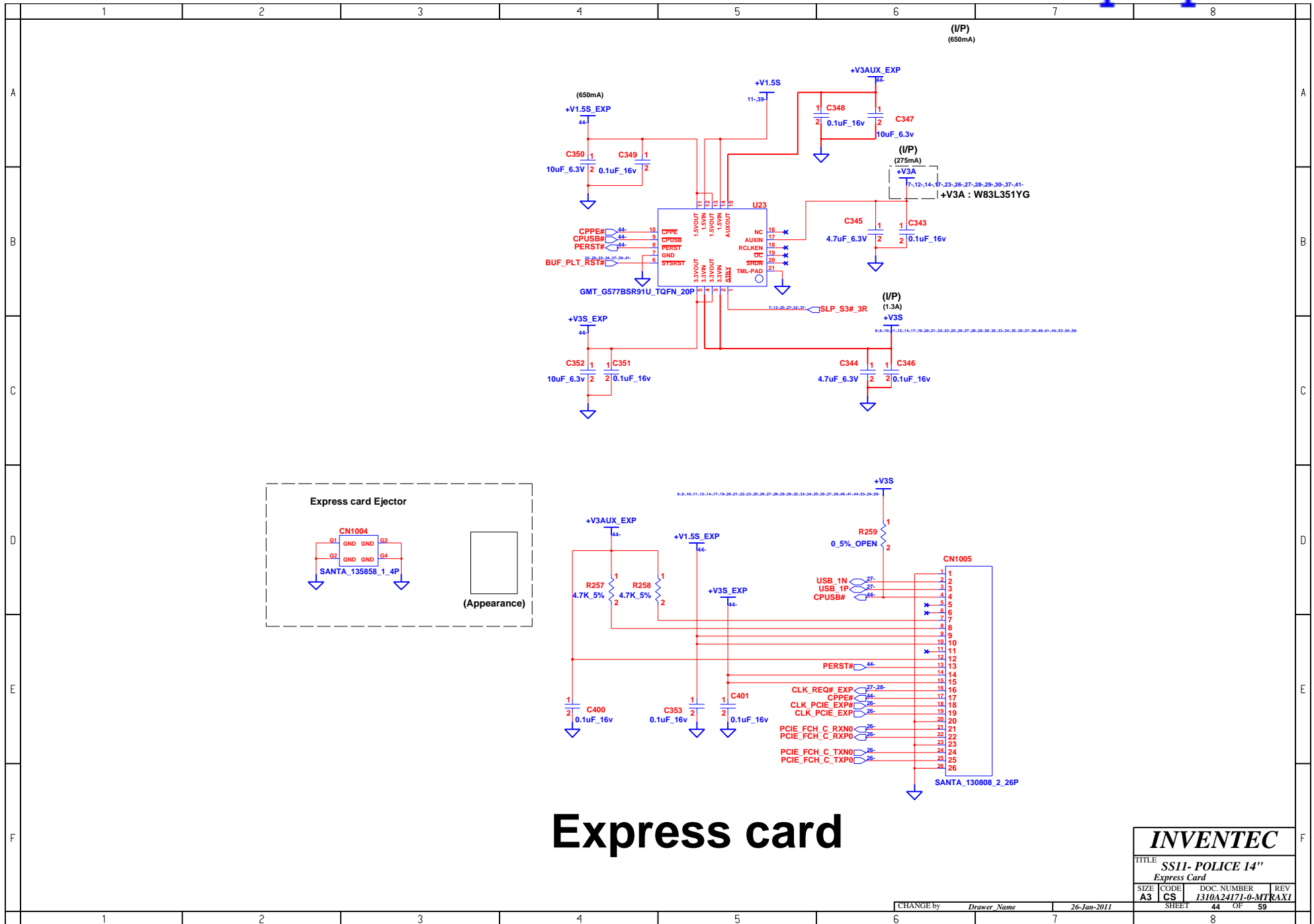


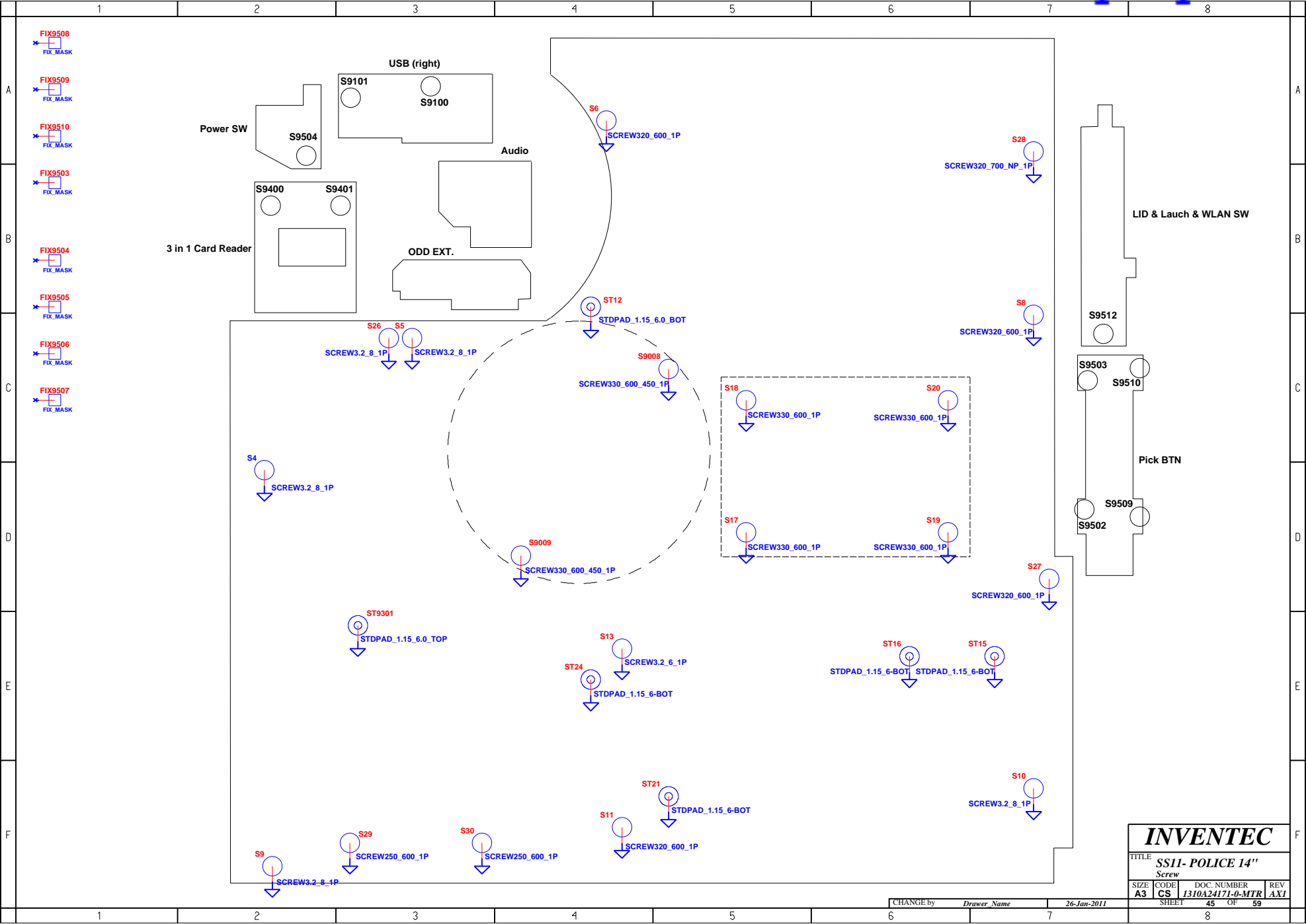
## USB CONN (Left)



## USB B/B CONN (MB Right side)

INVENTEC			
TITLE: SS11- POLICE 14" USB3.0 & USB2.0 CONN			
SIZE: A3	CODE: CS	DOC. NUMBER: 1310A24171-0-MTRAXI	REV: 43
SHEET		OF	59





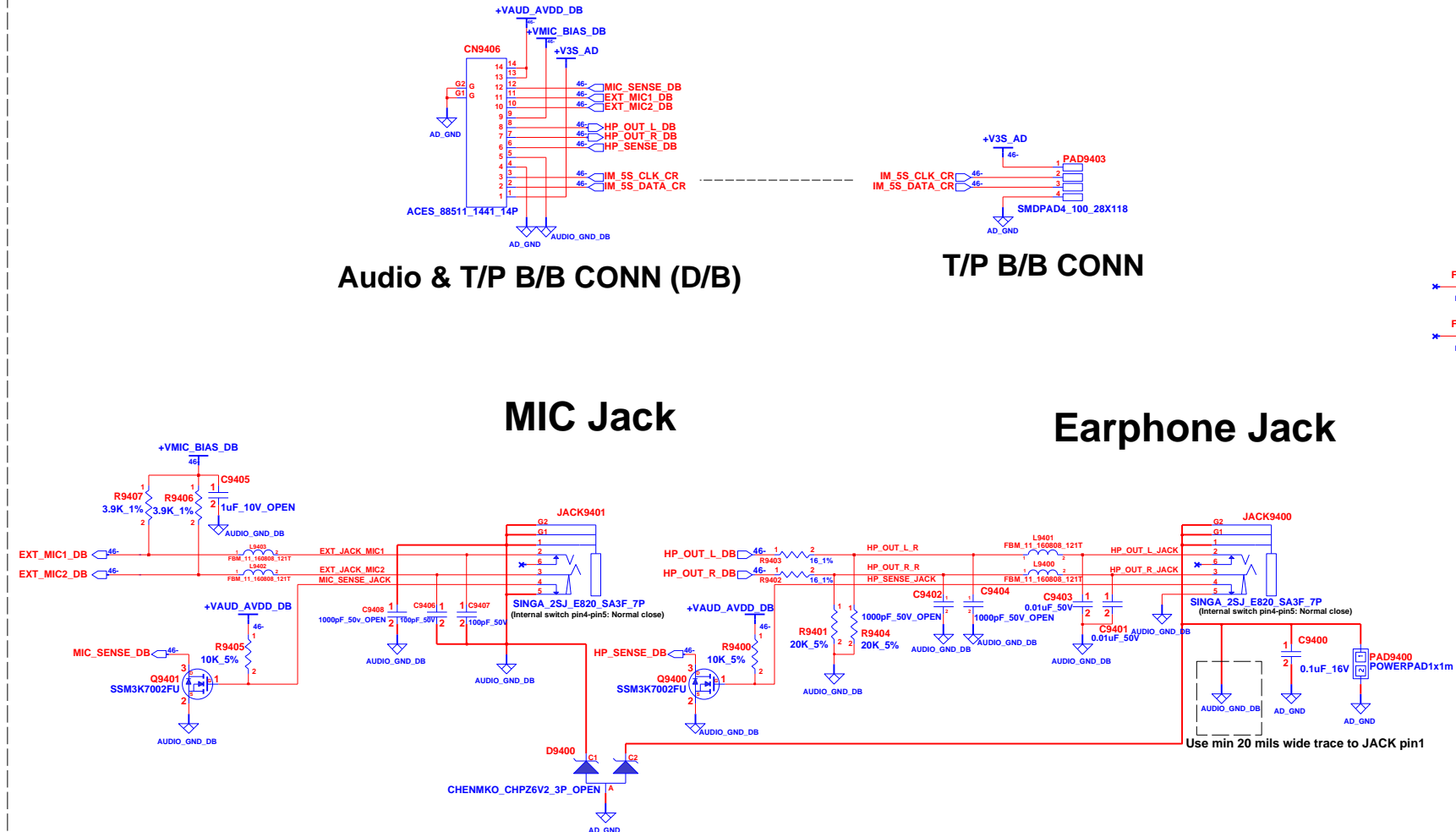
## Audio & T/P B/B CONN (D/B)

## T/P B/B CONN

## MIC Jack

## Earphone Jack

FIX9604  
FIX\_MASK  
FIX9605  
FIX\_MASK



## Audio jack board

INVENTEC			
TITLE SS11- POLICE 14"			
Audio jack board			
SIZE A3	CODE CS	DOC. NUMBER I310A24171-0-MTRAXI	REV 1
CHANGE by Drawer Name		26-Jan-2011	
SHEET		46	OF 59

(SD, MMC, MS)

TITLE **SS11- POLICE 14"**  
3in1CardReader daughter board

SIZE <b>A3</b>	CODE <b>CS</b>	DOC. NUMBER <b>1310A24171-0-MTRAX1</b>	REV
SHEET		47	OF 59

**USB Right Side Board**

The schematic diagram illustrates the USB Right Side Board, which includes two USB ports (P3N and P5N) and two power inputs (+V5A\_USB\_DB). Each port is connected to a WCM\_2012\_900T USB-to-LAN converter. The power inputs are connected to a 5V regulator circuit (C9102, C9100, C9101) and a 5V regulator circuit (C9105, C9104, C9103). The board also includes a PAD9100 connector, a SMDPAD8\_100\_28X157 connector, and a SANTA\_360125\_1\_4P connector. The board is labeled 'USB Right Side Board'.

INVENTEC			
SS11- POLICE 14"			
USB Board (Right side)			
SIZE	CODE	DOC. NUMBER	REV
A3	CS	1310A24171-0-MTR	AX1
SHEET		48	OF 59

CHANGE by: *Drawer Name* 26-Jan-2011

**USB Right Side Board**

The schematic diagram illustrates the electrical layout of the USB Right Side Board. It includes two USB ports (P3N and P5N) and two power inputs (+V5A\_USB\_DB). Each port is connected to a WCM\_2012\_900T USB-to-LVDS converter. The power inputs are connected to a 5V regulator circuit (C9102, C9100, C9101) and a 5V regulator circuit (C9105, C9104, C9103). The board also includes a PAD9100 connector, an SMDPAD8\_100\_28X157 connector, and various mounting points (S9100, S9101, S9102, S9103). The board is labeled 'USB Right Side Board'.

INVENTEC			
SS11- POLICE 14"			
USB Board (Right side)			
SIZE	CODE	DOC. NUMBER	REV
A3	CS	1310A24171-0-MTR	AX1
SHEET		48	OF 59

**USB Right Side Board**

The schematic diagram illustrates the USB Right Side Board, which includes two USB ports (P3N and P5N) and a power section. Key components and connections are as follows:

- Power Section:**
  - +V5A\_USB\_DB (500mA):** Power supply input.
  - USB\_GND:** Ground connection.
  - Capacitors:** C9102 (22uF\_6.3V), C9100 (0.1uF\_16v), C9101 (1000pF\_50V\_OPEN), C9105 (22uF\_6.3V), C9104 (0.1uF\_16v), C9103 (1000pF\_50V\_OPEN).
- USB Ports:**
  - USB P3N\_DB and USB P3P\_DB:** USB P3N port.
  - USB P5N\_DB and USB P5P\_DB:** USB P5N port.
- Connectors and Components:**
  - L9100 and L9101:** USB to UART converters.
  - WCM\_2012\_900T:** USB connectors.
  - CN9100 and CN9101:** USB connectors.
  - SANTA\_360125\_1\_4P:** USB connectors.
- Other Components:**
  - PAD9100:** Pad component.
  - SMDPAD8\_100\_28X157:** Pad component.
  - FIX9103, FIX9102, FIX9100, FIX9101:** Fix components.
  - S9100, S9101:** Screw components.

**USB Right Side Board**

The schematic diagram illustrates the USB Right Side Board, which includes two USB ports (P3N and P5N) and a power section. Key components and connections are as follows:

- Power Section:**
  - +V5A\_USB\_DB (500mA):** Power supply input.
  - USB\_GND:** Ground connection.
  - Capacitors:** C9102 (22uF\_6.3V), C9100 (0.1uF\_16v), C9101 (1000pF\_50V\_OPEN), C9105 (22uF\_6.3V), C9104 (0.1uF\_16v), C9103 (1000pF\_50V\_OPEN).
- USB Ports:**
  - USB P3N\_DB and USB P3P\_DB:** USB P3N port.
  - USB P5N\_DB and USB P5P\_DB:** USB P5N port.
- Connectors and Components:**
  - L9100 and L9101:** USB to UART converters.
  - WCM\_2012\_900T:** USB connectors.
  - CN9100 and CN9101:** USB connectors.
  - SANTA\_360125\_1\_4P:** USB connectors.
- Other Components:**
  - PAD9100:** Pad component.
  - SMDPAD8\_100\_28X157:** Pad component.
  - FIX9103, FIX9102, FIX9100, FIX9101:** Fix components.
  - S9100, S9101:** Screw components.

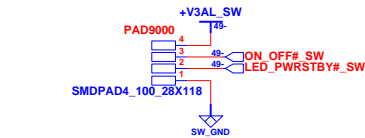
**USB Right Side Board**

The schematic diagram illustrates the USB Right Side Board, which includes two USB ports (P3N and P5N) and two power inputs (+V5A\_USB\_DB). Each port is connected to a WCM\_2012\_900T USB-to-LVDS converter. The power inputs are connected to a 5V regulator circuit (C9102, C9100, C9101) and a 5V regulator circuit (C9105, C9104, C9103). The board also includes a PAD9100 connector, a SMDPAD8\_100\_28X157 connector, and a SANTA\_360125\_1\_4P connector. The board is labeled "USB Right Side Board".

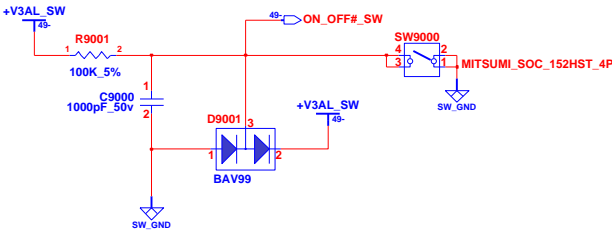
INVENTEC			
SS11- POLICE 14"			
USB Board (Right side)			
SIZE	CODE	DOC. NUMBER	REV
A3	CS	1310A24171-0-MTR	AX1
SHEET		48	OF 59

CHANGE by: *Drawer Name* 26-Jan-2011

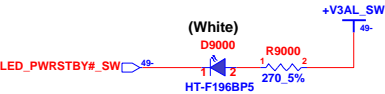




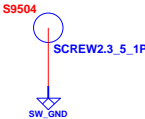
Power Switch B/B CONN



Power Button

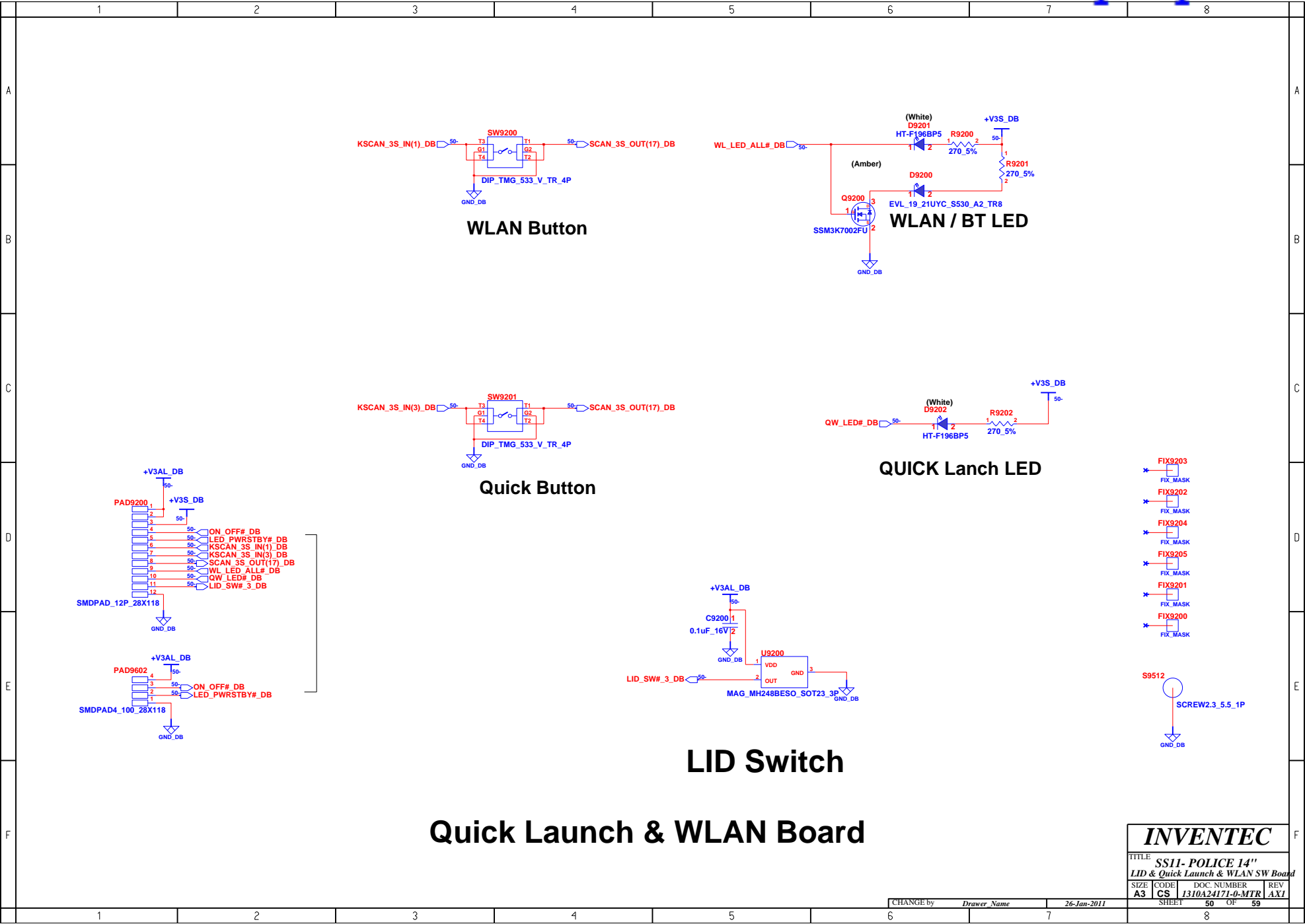


Power / Standby LED



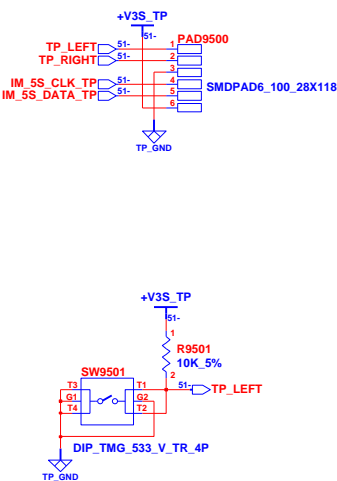
Power Button Board

INVENTEC			
TITLE			
SS11- POLICE 14"			
Power Button Board			
SIZE	CODE	DOC. NUMBER	REV
A3	CS	1310A24171-0-MTR	AXI
CHANGE by		26-Jan-2011	
DRAWN			
SHEET		49	OF 59

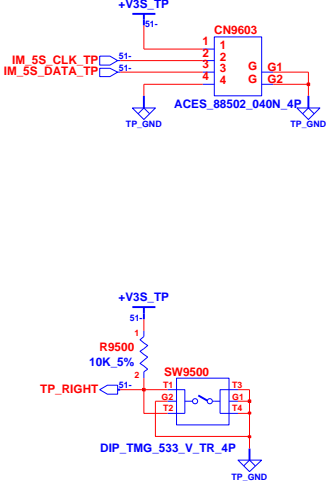


Quick Launch & WLAN Board

INVENTEC			
TITLE SS11- POLICE 14"			
LID & Quick Launch & WLAN SW Board			
SIZE A3	CODE CS	DOC. NUMBER 1310A24171-0-MTR	REV AX1
CHANGE by		Drawer Name	26-Jan-2011
SHEET		50	OF 59

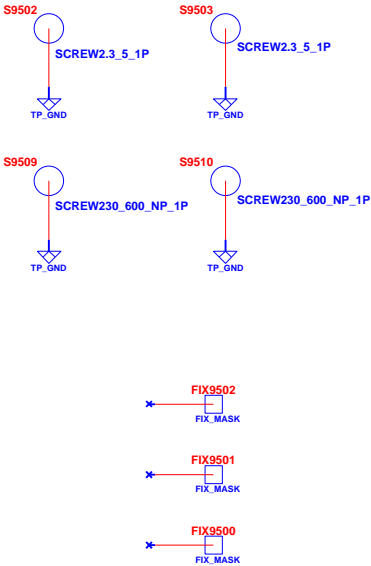


Left Button

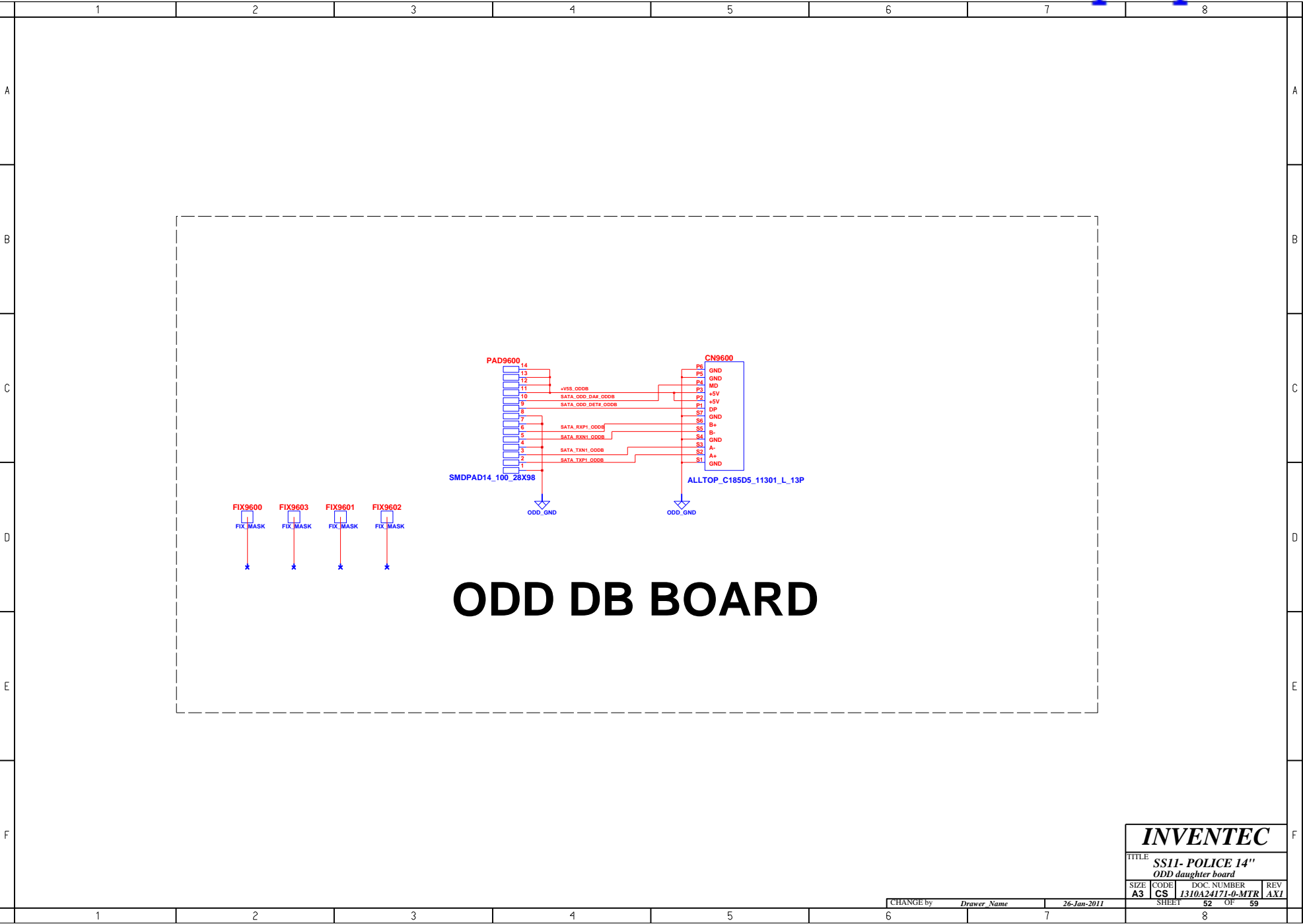


Right Button

Pick Button Board



INVENTEC			
TITLE			
SS11- POLICE 14"			
Pick Button Board			
SIZE	CODE	DOC. NUMBER	REV
A3	CS	1310A24171-0-MTR	AXI
CHANGE by		Drawer Name	26-Jan-2011
SHEET		51	OF 59



INVENTEC			
TITLE SS11- POLICE 14" ODD daughter board			
SIZE A3	CODE CS	DOC. NUMBER 1310A24171-0-MTR	REV AX1
SHEET 52		OF 59	







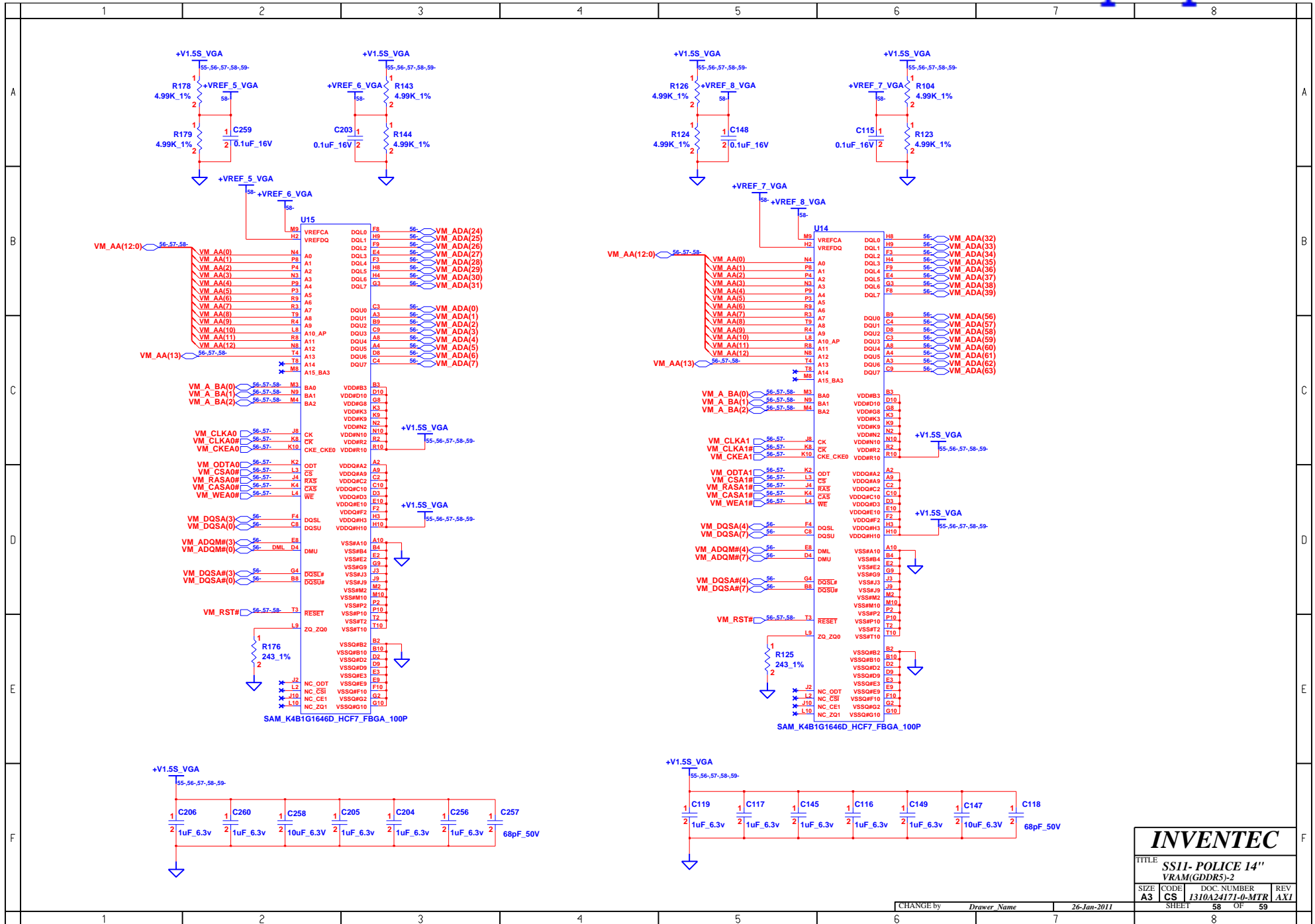




SIZE <b>A3</b>	CODE <b>CS</b>	DOC. NUMBER <b>1310A24171-0-MTR</b>	REV <b>AX1</b>
SHEET		57	OF 59

CHANGE by	<i>Drawer Name</i>	26-Jan-2011
-----------	--------------------	-------------

CS 1310A24171-0-M1R  
SHEET 57 OF 59



**INVENTEC**

TITLE  
SS11- POLICE 14"  
VRAM(GDDR5)-2

SIZE	CODE	DOC. NUMBER	REV
A3	CS	1310A24171-0-MTR	AX1

CHANGE by Drawer Name 26-Jan-2011

SHEET 58 OF 59

