



## Table Of Contents

### Page

5- DC & Battery Charger
6- Select & Battery CONN
7- System Power (+V3A/+V5A)
8- System Power (+V1.1A/+V2.5S)
9- DDR3 Power (+V1.5_+V1.35/+V0.75S)
10- APU Power (VDD/VDDNB)
11- SYSTEM POWER VDDP,VDDR (+V1.2)
12- Power (Sleep: +V5S/+V3S/+V1.1S)
13- OCP
14- Power (Sequence)

### Page

15- APU LLANO-1
16- APU LLANO-2
17- APU LLANO-3 & HDT
18- APU LLANO-4
19- DDR3-DIMM0 (8.0)
20- DDR3-DIMM1 (4.0)
21- Thermal & FAN
22- Travis (DP to LVDS)
23- LCM
24- HDMI
25- VGA CONN
26- FCH-Hudson M2-1
27- FCH-Hudson M2-2
28- FCH-Hudson M2-3
29- FCH-Hudson M2-4
30- FCH-Hudson M2-5
31- SPI Flash
32- KBC
33- Keyboard, Touch Pad
34- SATA HDD, ODD & LED.
35- Audio CODEC
36- MODEM
37- GLAN Controller

### Page

38- RJ45 CONN, Transformer
39- WLAN (Mini Card)
40- G sensor (Accelerometer)
41- PWR&FP&Launch&WEB/DMIC CONN
42- USB3.0 Controller
43- USB CONNs
44- Express Card
45- Screw
46- DB~3in1 Card Reader & Audio jack-1
47- DB~3in1 Card Reader & Audio jack-2
48- DB~USB CONNs (right side)
49- DB~Power Button Board
50- DB~LID & Quick Launch, WLAN SW & LED
51- DB~Pick Button
52- DB~ODD DB Board
53- GPU-Seymour XT (S3 package)-1
54- GPU-Seymour XT (S3 package)-2
55- GPU-Seymour XT (S3 package)-3
56- GPU-Seymour XT (S3 package)-4
57- VRAM-1
58- VRAM-2
59- VGA Power
60- WWAN, SIM Card

**INVENTEC**

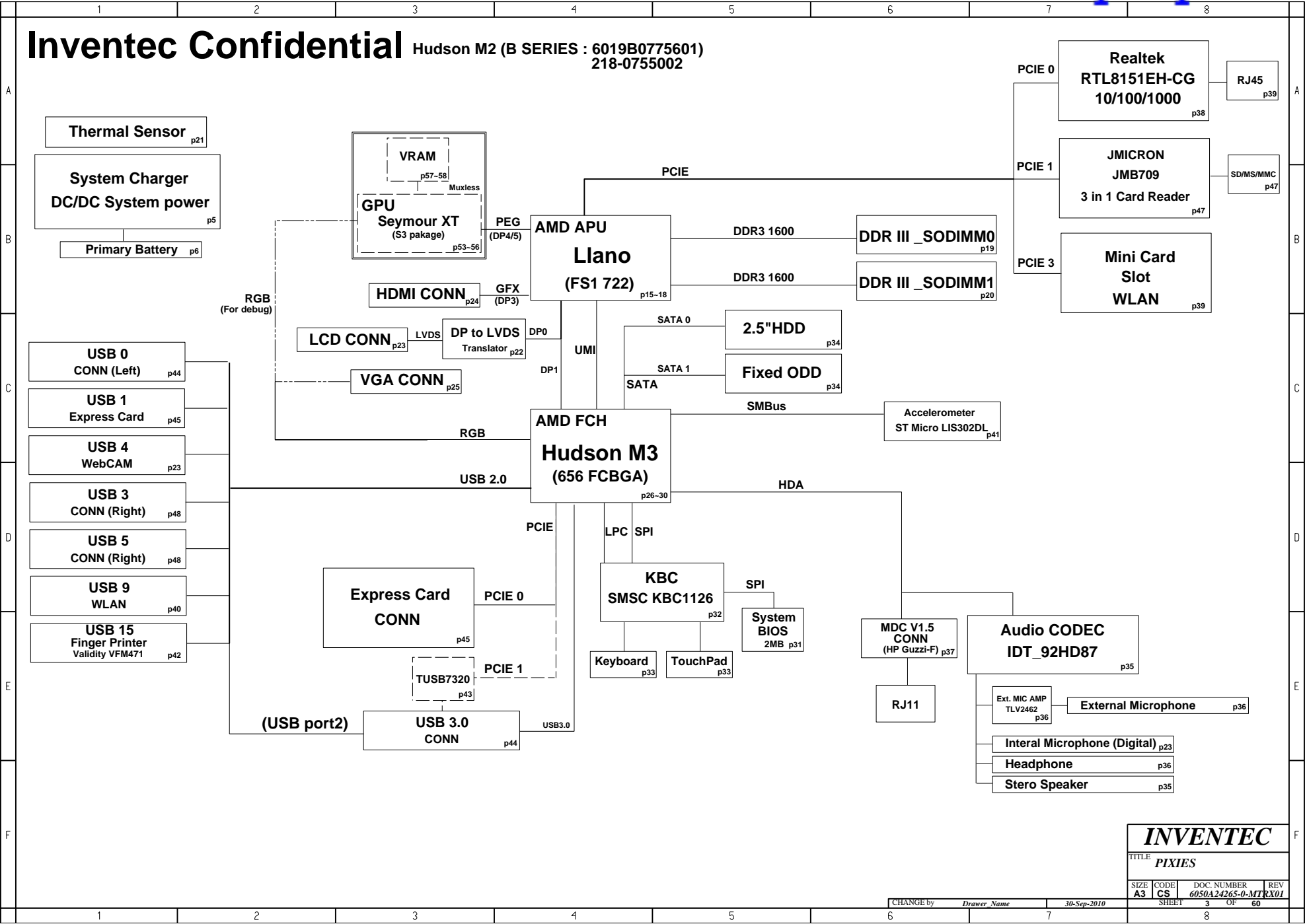
TITLE

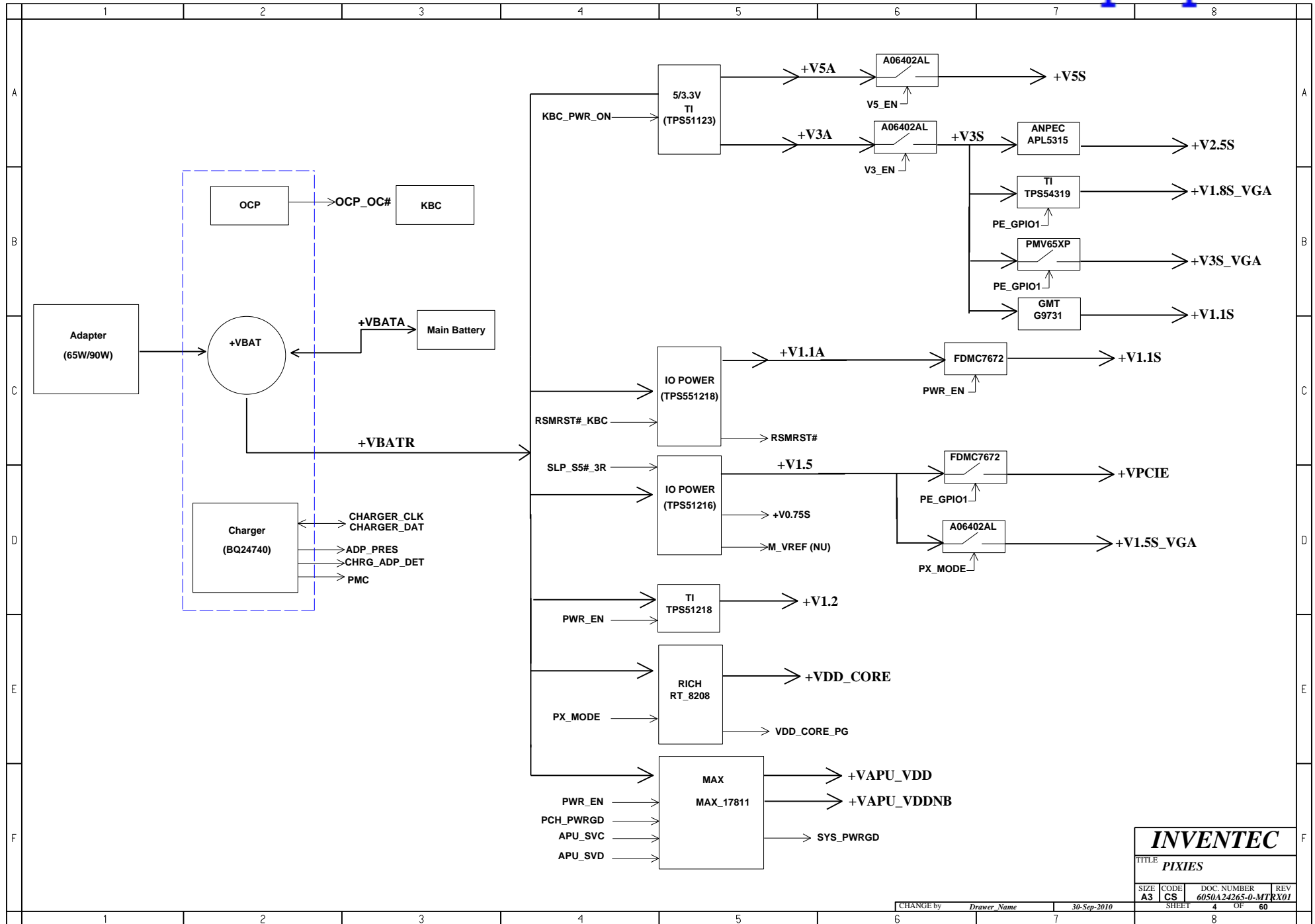
Contents

SIZE	CODE	DOC. NUMBER	REV
A3	CS	6050A24265-0-MTR	X01

CHANGE by *Drawer Name* 30-Sep-2010

SHEET 2 OF 60



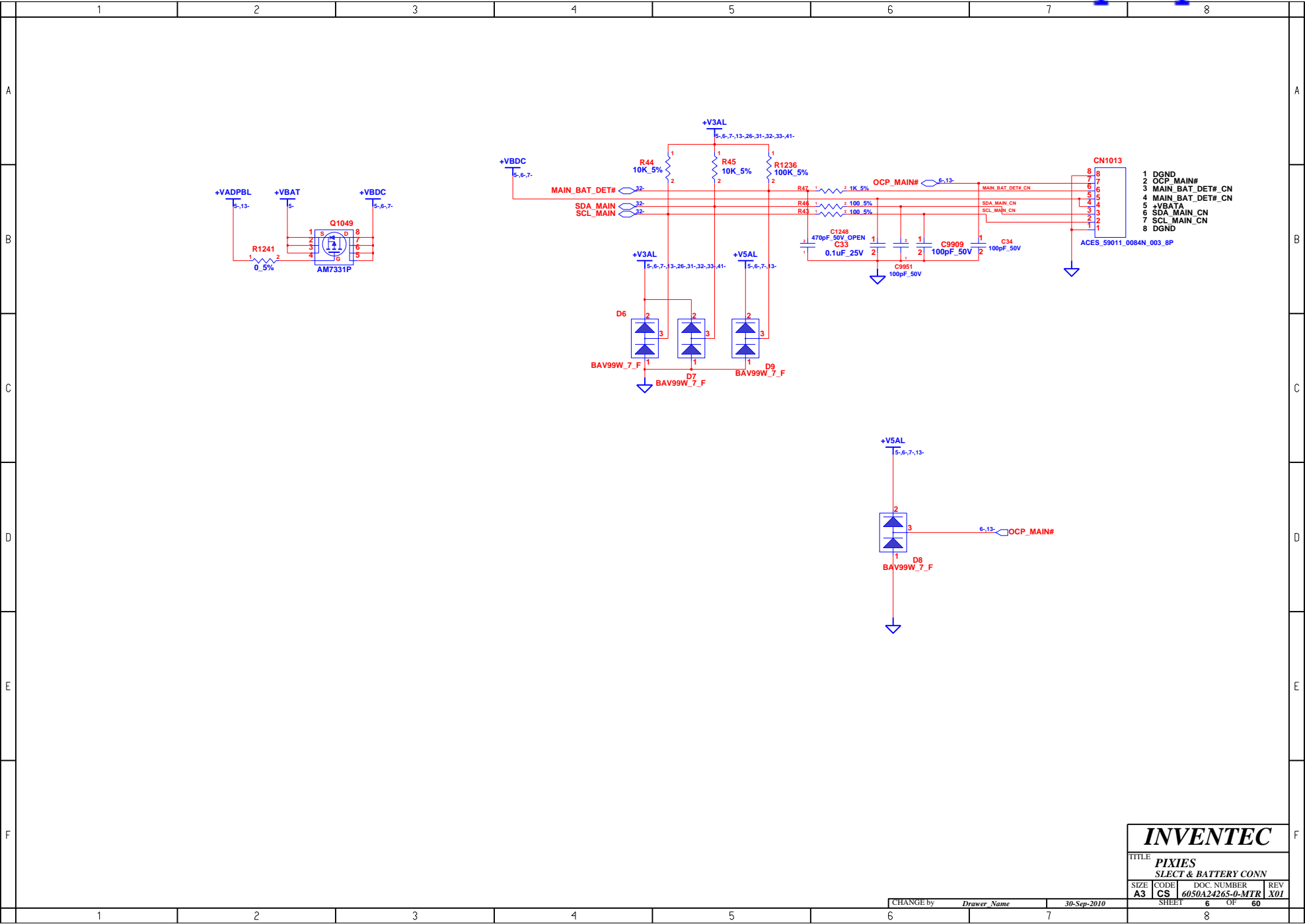


INVENTEC			
TITLE PIXIES			
SIZE A3	CODE CS	DOC. NUMBER 6050A24265-0-MTR	REV X01
CHANGE by Drawer Name		30-Sep-2010	
SHEET		4	OF 60

**INVENTEC**

TITLE			
<b>PIXIES</b> <b>DC &amp; BATTERY CHARGER</b>			
SIZE	CODE	DOC. NUMBER	REV
<b>A3</b>	<b>CS</b>	<b>6050A24265-0-MTR</b>	<b>X01</b>
SHEET		5	OF 60

CHANGE by	<i>Drawer Name</i>	30-Sep-2010
-----------	--------------------	-------------



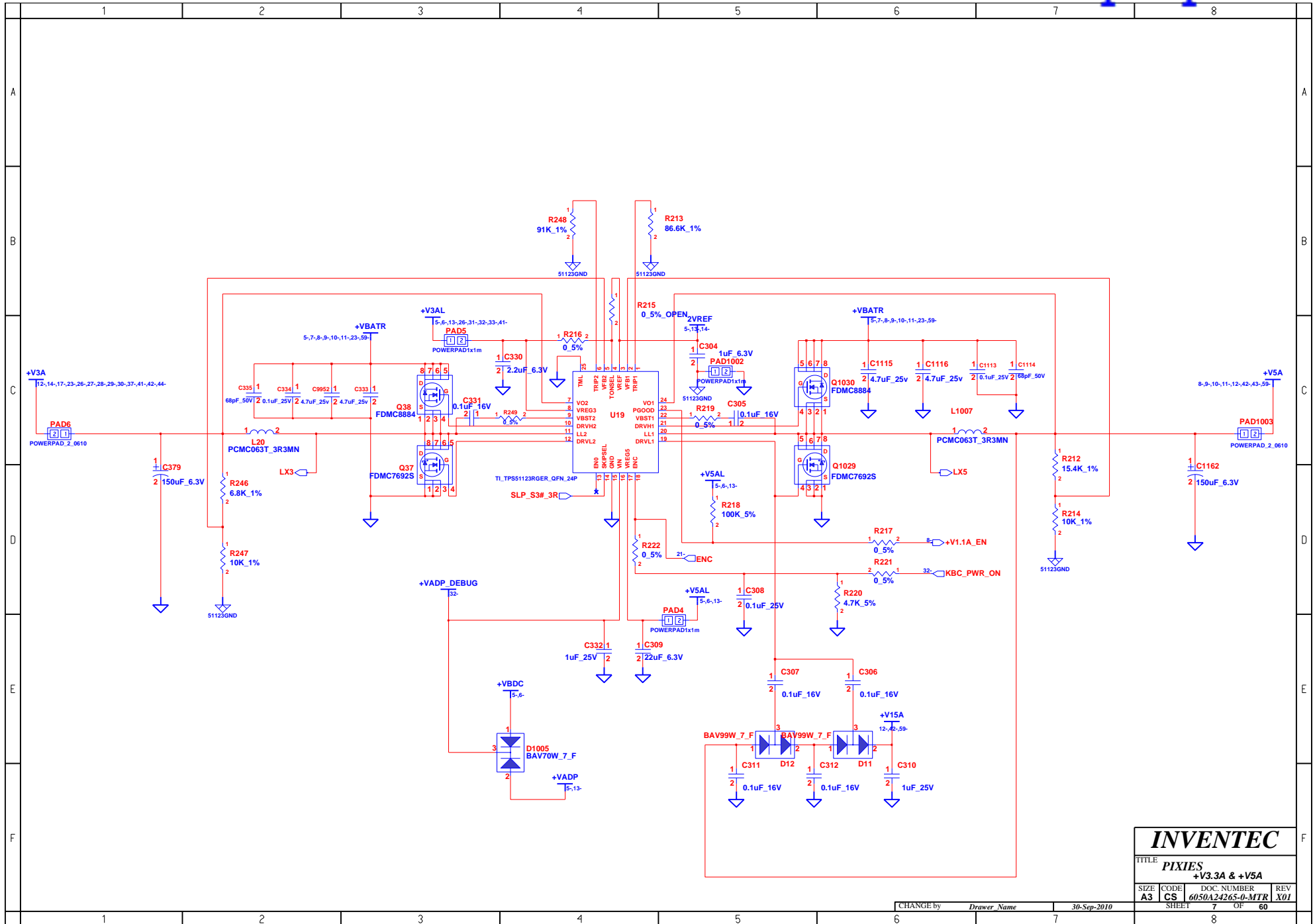
**INVENTEC**

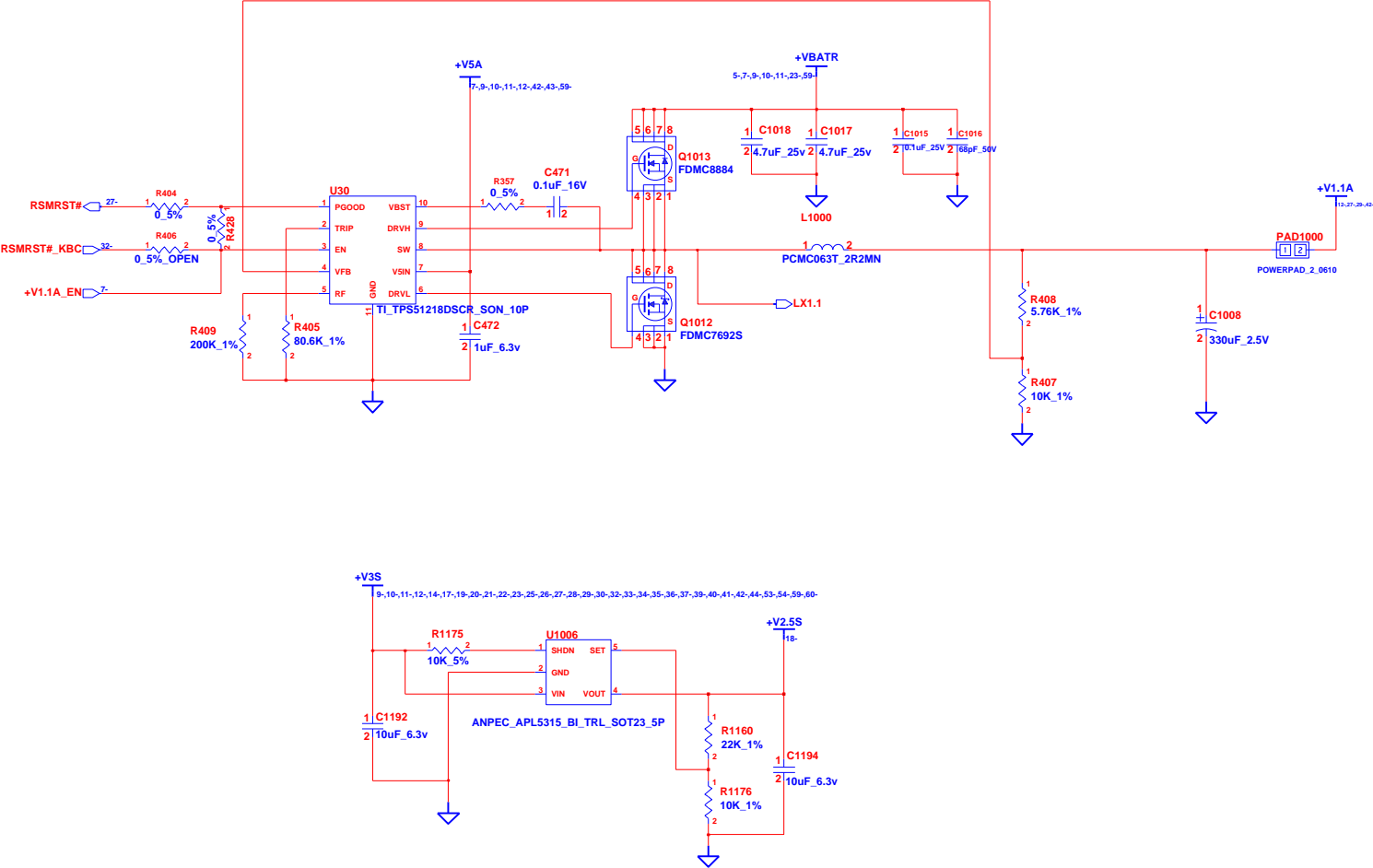
TITLE  
**PIXIES**  
**SLECT & BATTERY CONN**

SIZE	CODE	DOC. NUMBER	REV
A3	CS	6050A24265-0-MTR	X01

CHANGE by *Drawer Name* 30-Sep-2010

SHEET 6 OF 60





**INVENTEC**

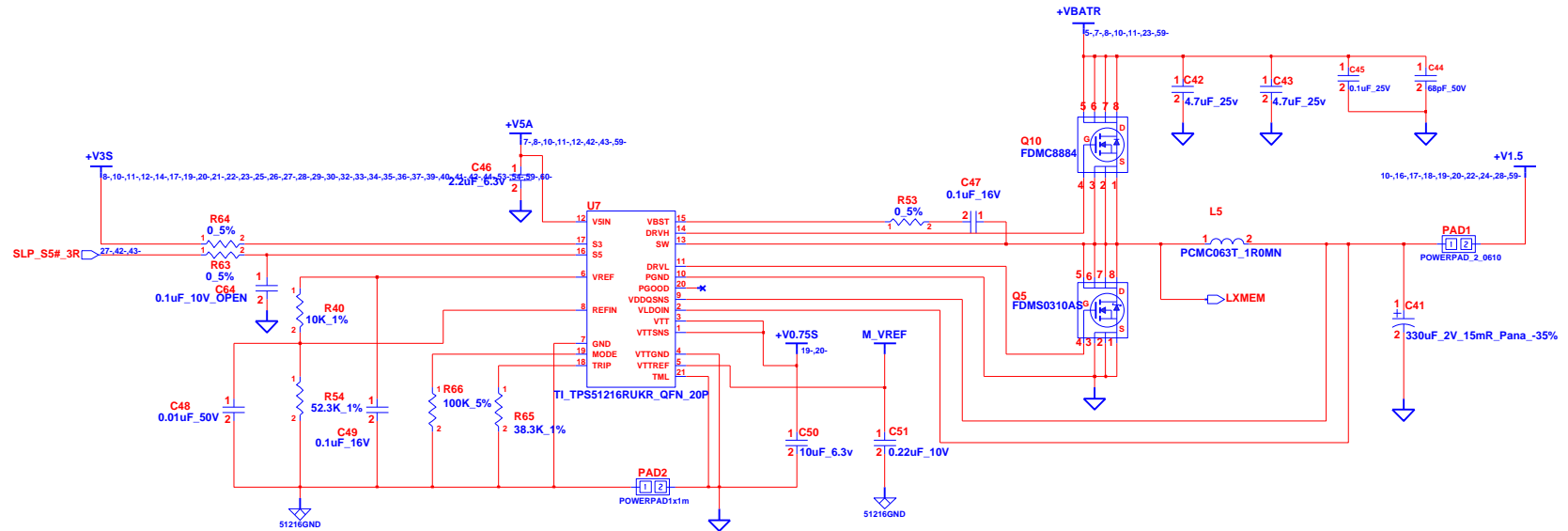
TITLE  
**PIXIES**  
SYSTEM POWER(+V1.1A/+V2.5S)

SIZE	CODE	DOC. NUMBER	REV
A3	CS	6050A24265-0-MTR	X01

SHEET	OF	60
8		

CHANGE by *Drawer Name* 30-Sep-2010

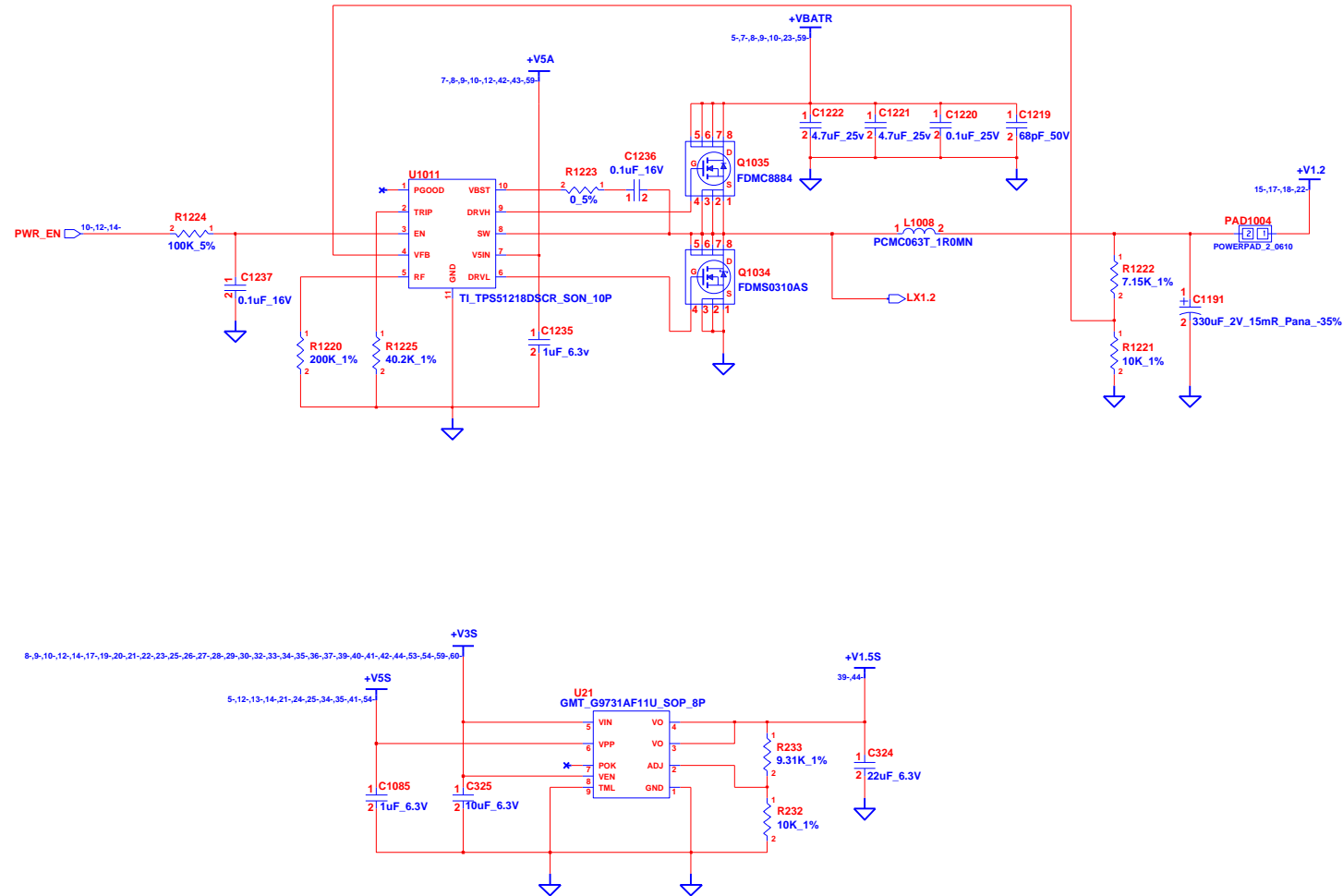




NOTE: DDR3 REGULATOR

INVENTEC			
TITLE: PIXIES			
DDR3 POWER (+V1.5/+V0.75S)			
SIZE	CODE	DOC. NUMBER	REV
A3	CS	6050A24265-0-MTR	X01
CHANGE by		Drawer Name	30-Sep-2010
SHEET		9	OF 60

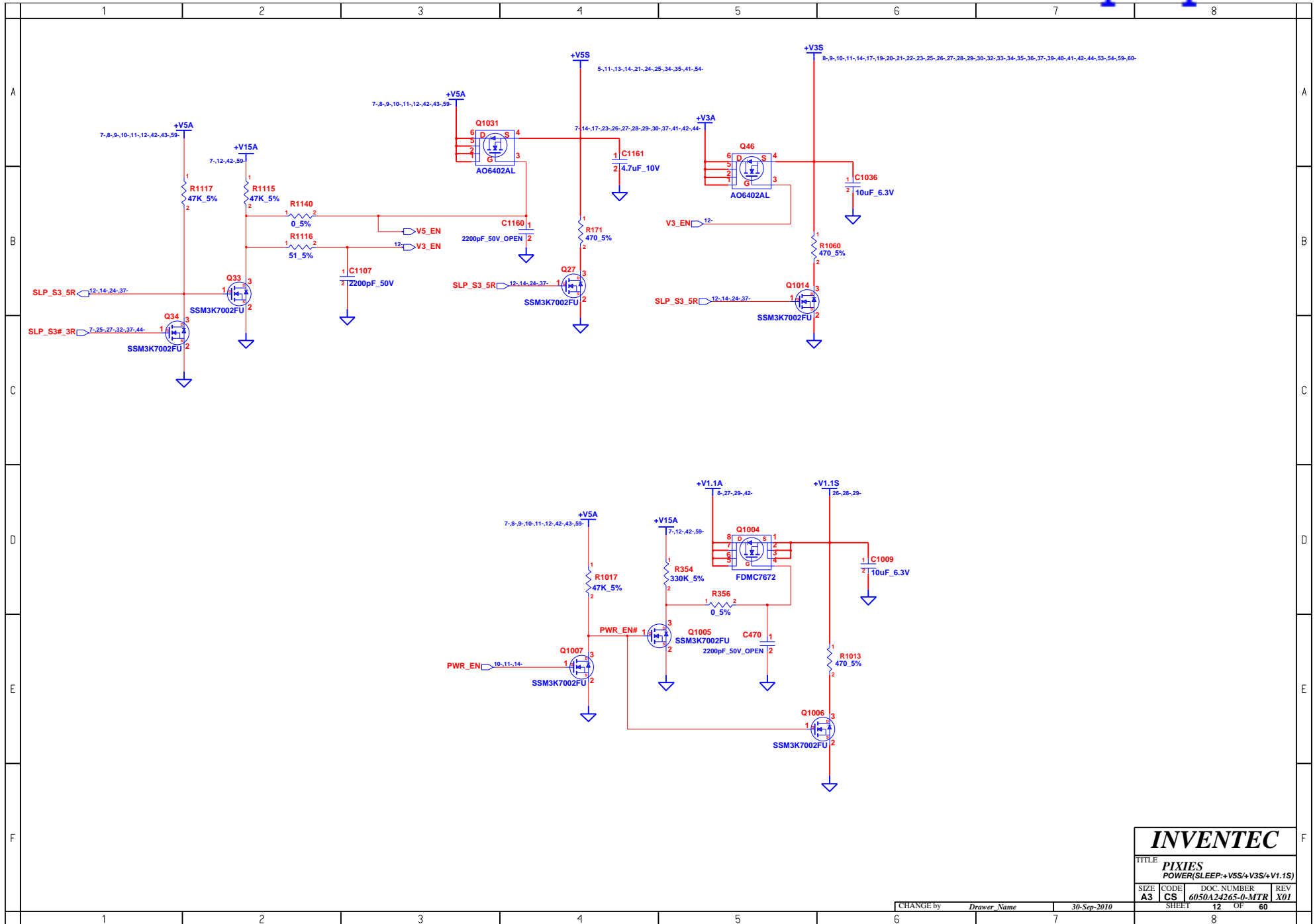




# INVENTEC

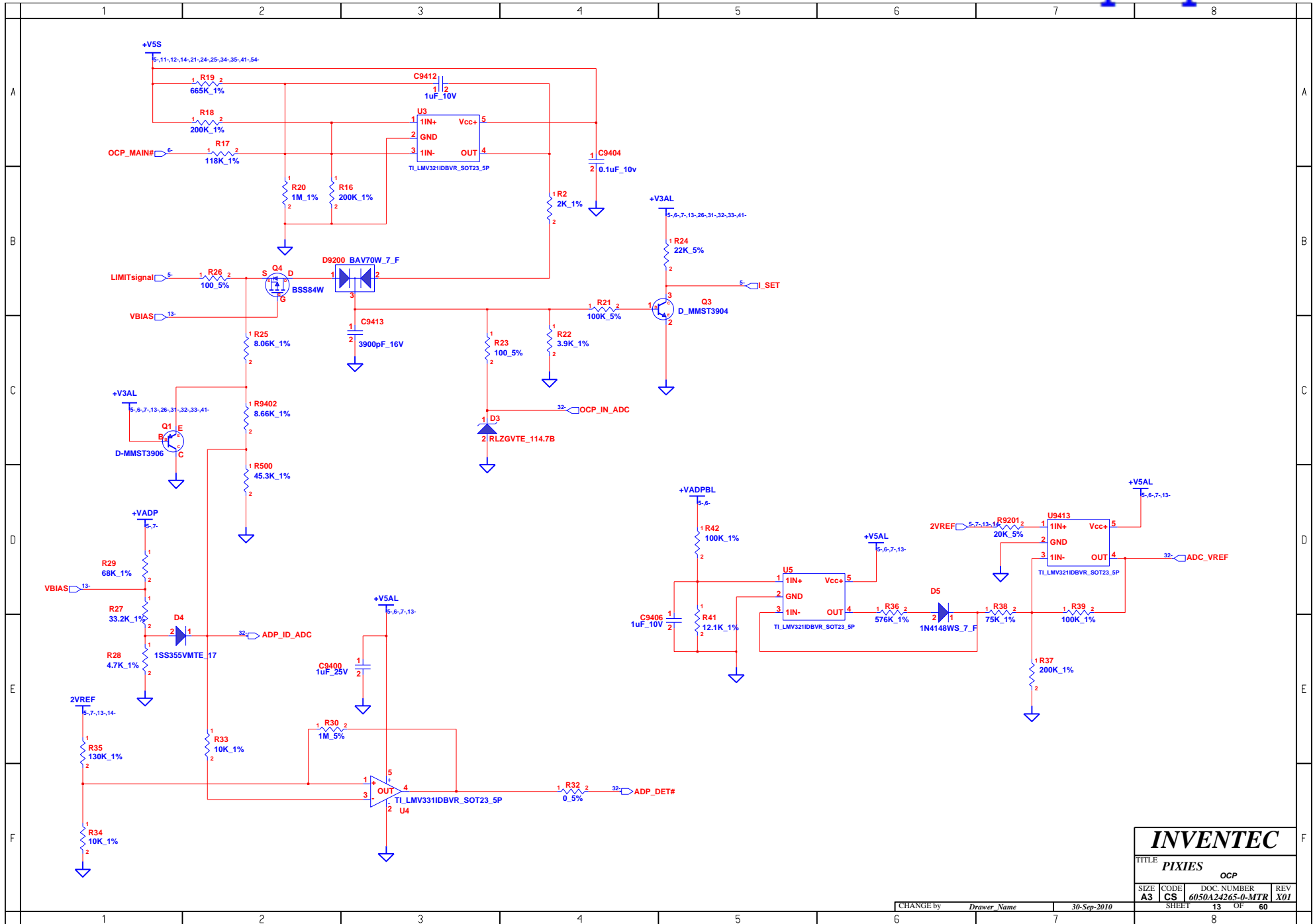
TITLE			
PIXIES			
SYSTEM POWER VDDP,VDDR(+V1.2)			
SIZE	CODE	DOC. NUMBER	REV
A3	CS	6050A24265-0-MTR	X01
SHEET		11	OF 60

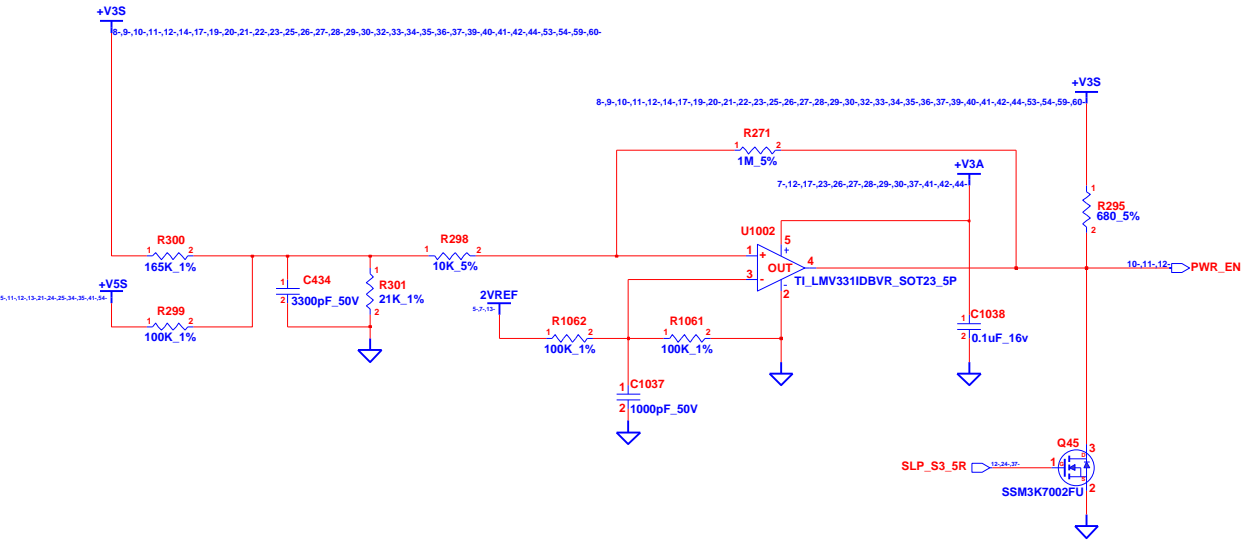
CHANGE by *Drawer Name* 30-Sep-2010



INVENTEC				
TITLE PIXIES POWER(SLEEP:+V5S/+V3S/+V1.1S)				
SIZE A3	CODE CS	DOC. NUMBER 6050A24265-0-MTR	REV X01	
SHEET		12	OF	60

CHANGE by *Drawer Name* 30-Sep-2010





**INVENTEC**

TITLE  
**PIXIES**  
POWER(SEQUENCE)

SIZE	CODE	DOC. NUMBER	REV
A3	CS	6050A24265-0-MTR	X01

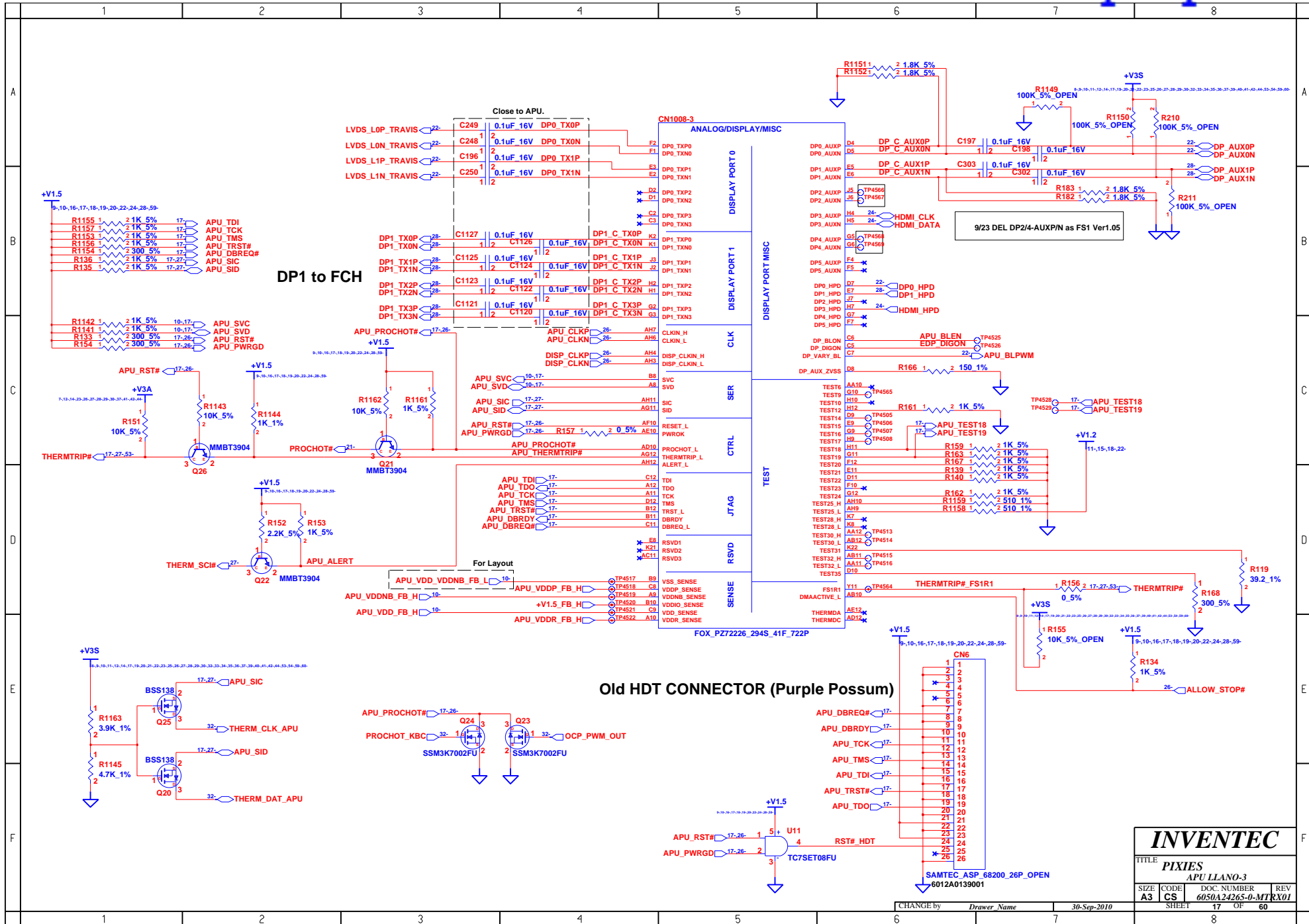
SHEET 14 OF 60

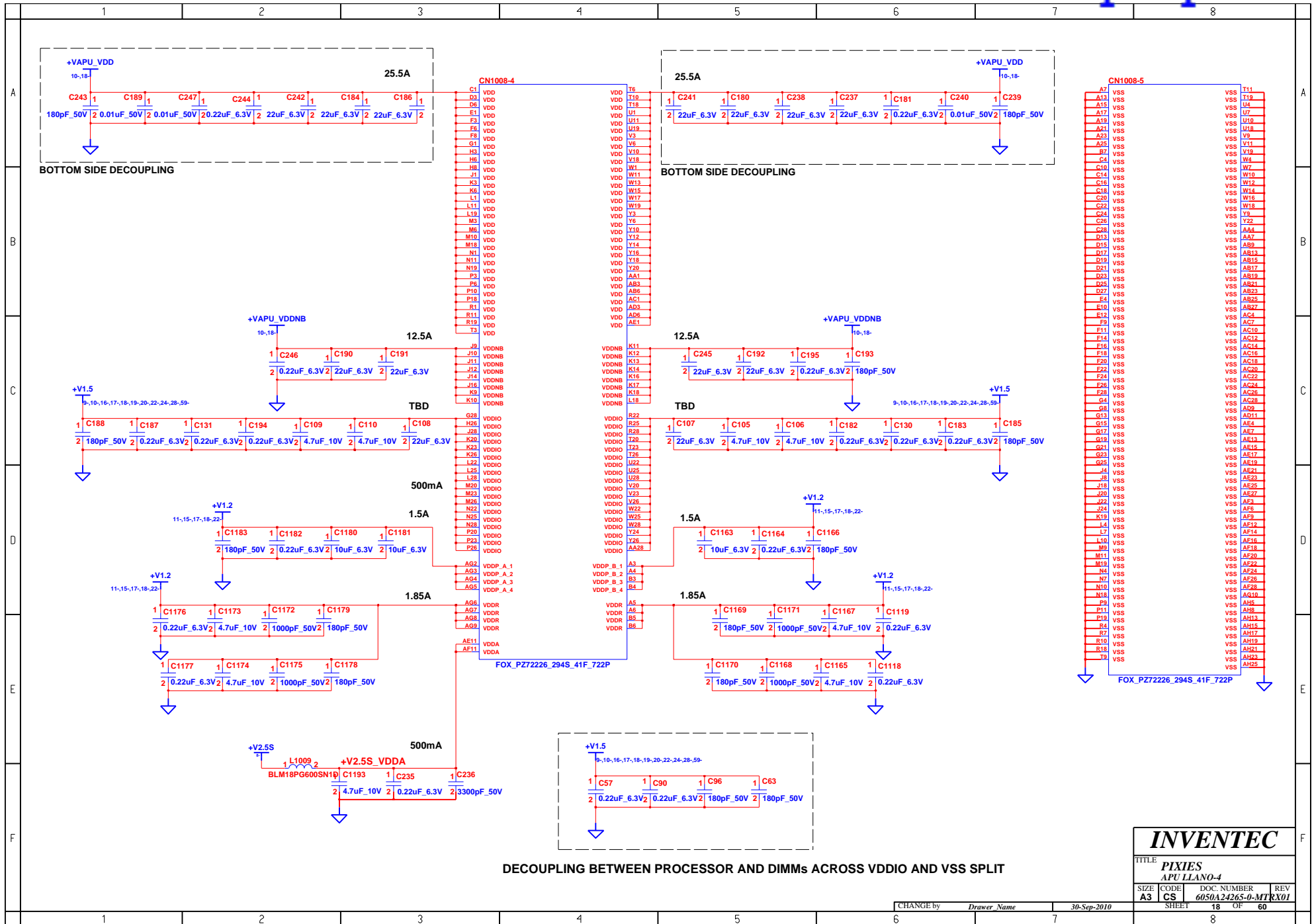
CHANGE by *Drawer Name* 30-Sep-2010











# SO DIMM0 8.0mm

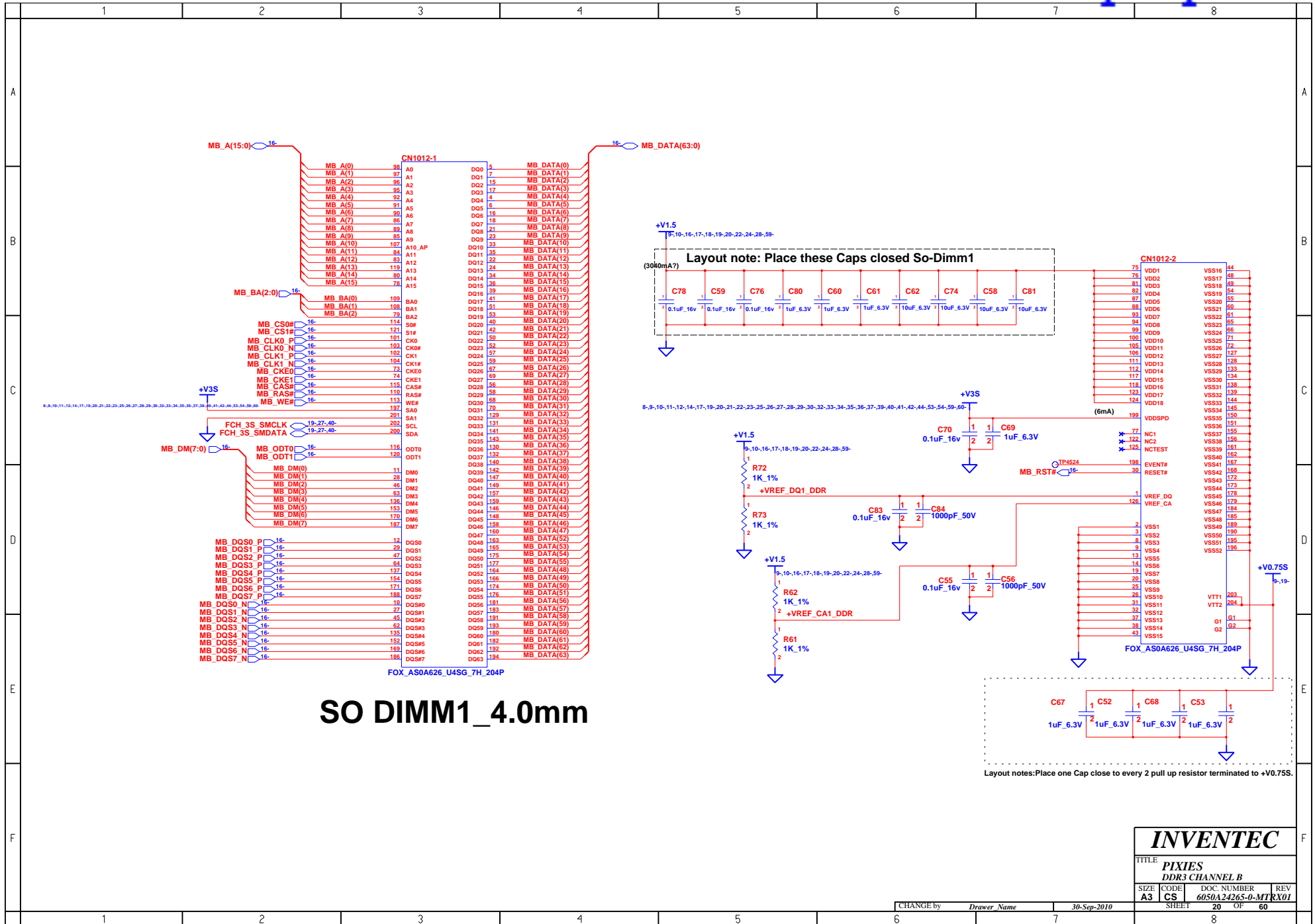
**Layout notes:**Place one Cap close to every 2 pull up resistor terminated to +V0.75S

**INVENTEC**

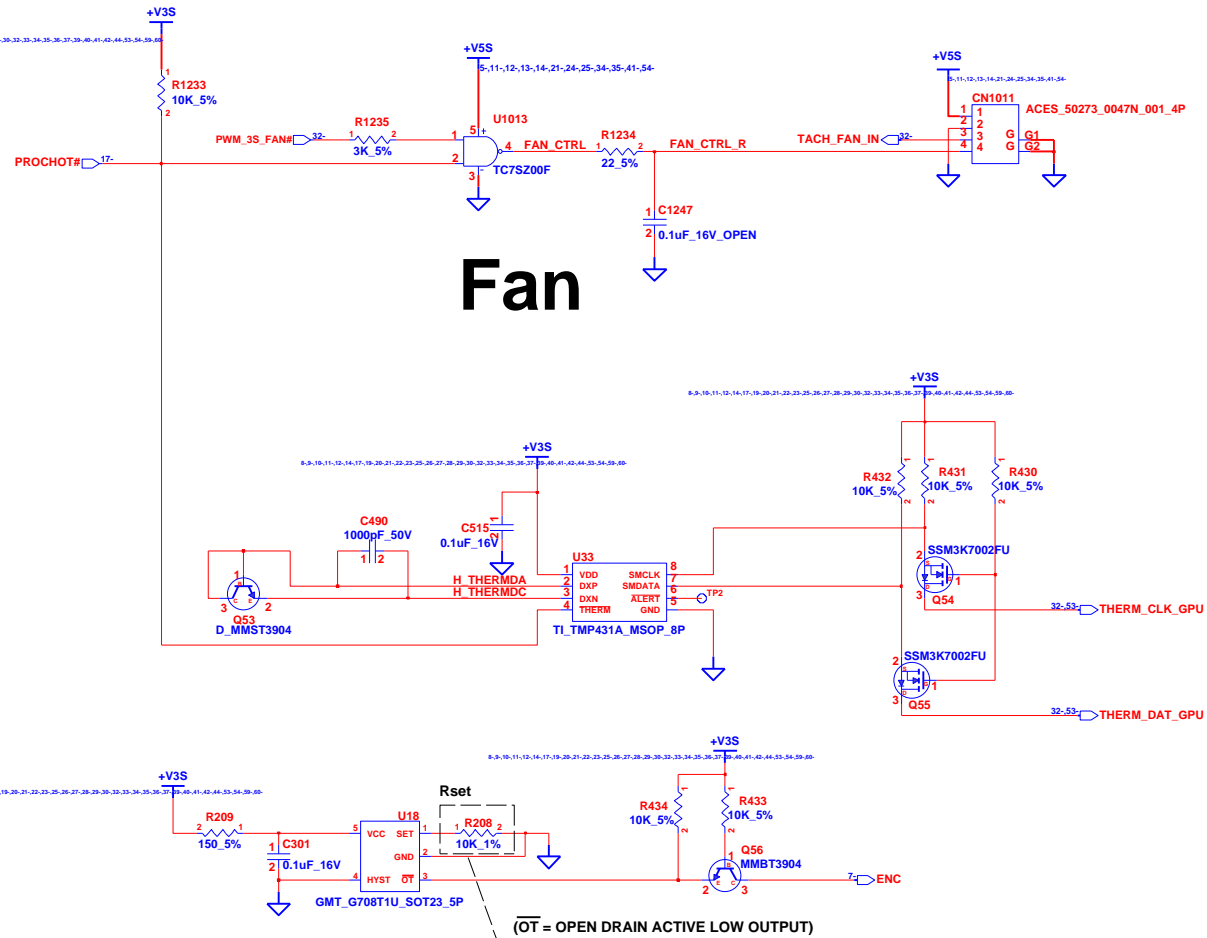
TITLE			
<b>PIXIES</b> <b>DDR3 CHANNEL A</b>			
SIZE	CODE	DOC. NUMBER	REV
<b>A3</b>	<b>CS</b>	<b>6050A24265-0-MTRX01</b>	
SHEET		19	OF 60

CHANGE by	<i>Drawer Name</i>	30-Sep-2010
-----------	--------------------	-------------

8



# Fan

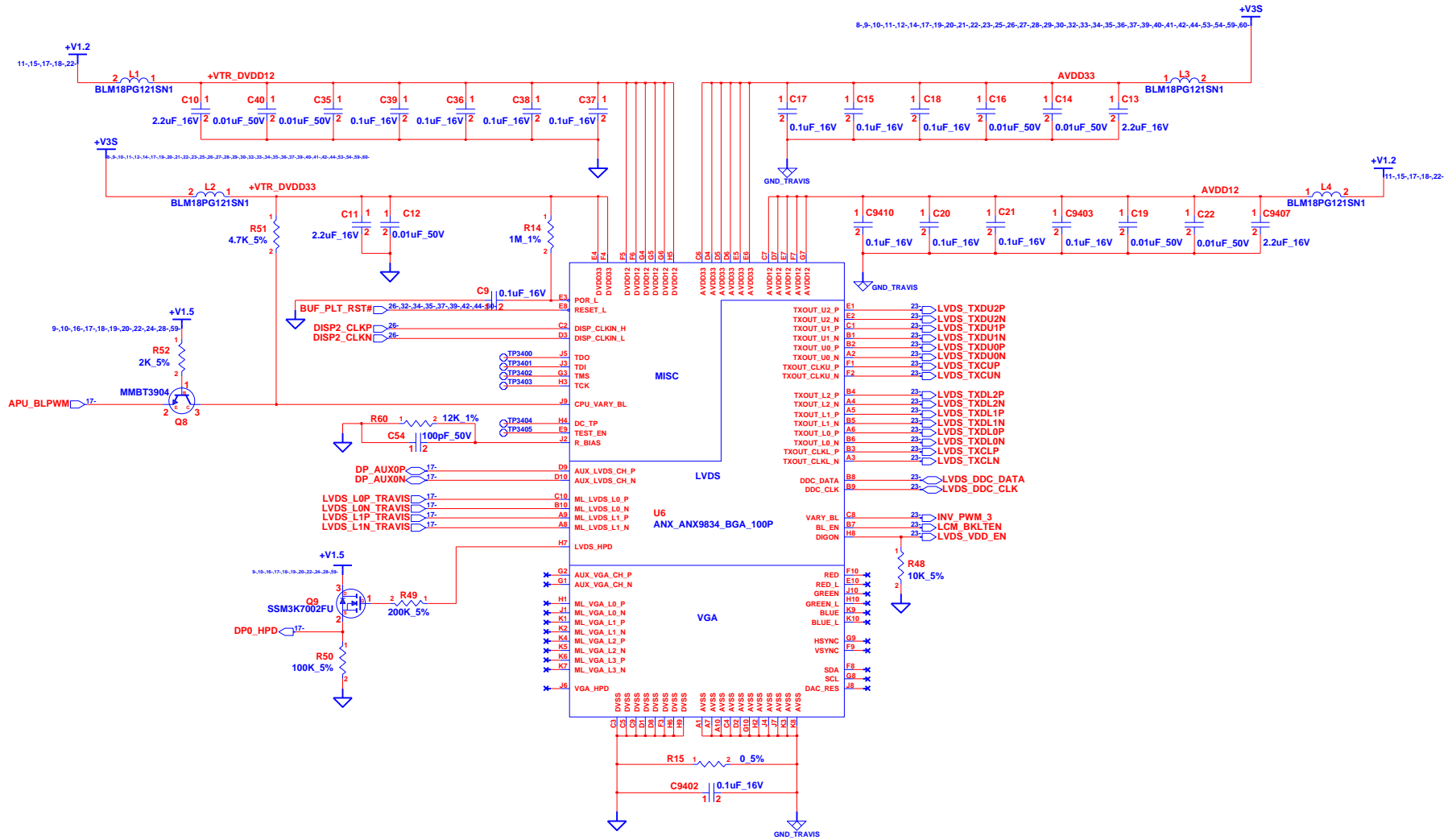


( $\overline{\text{OT}}$  = OPEN DRAIN ACTIVE LOW OUTPUT)

**Thermal shutdown at 110°C**  
 $R_{set} \text{ (K ohm)} = 0.0012T^2 - 0.9308T + 96.147$   
 (85°C:24Kohm)

## Temperature switch

<b>INVENTEC</b>			
TITLE <b>PIXIES</b> <i>Thermal &amp; Fan</i>			
SIZE <b>A3</b>	CODE <b>CS</b>	DOC. NUMBER <b>6050A24265-0-MTRX01</b>	REV
SHEET <b>21</b>		OF <b>60</b>	



# Travis (DP to LVDS)

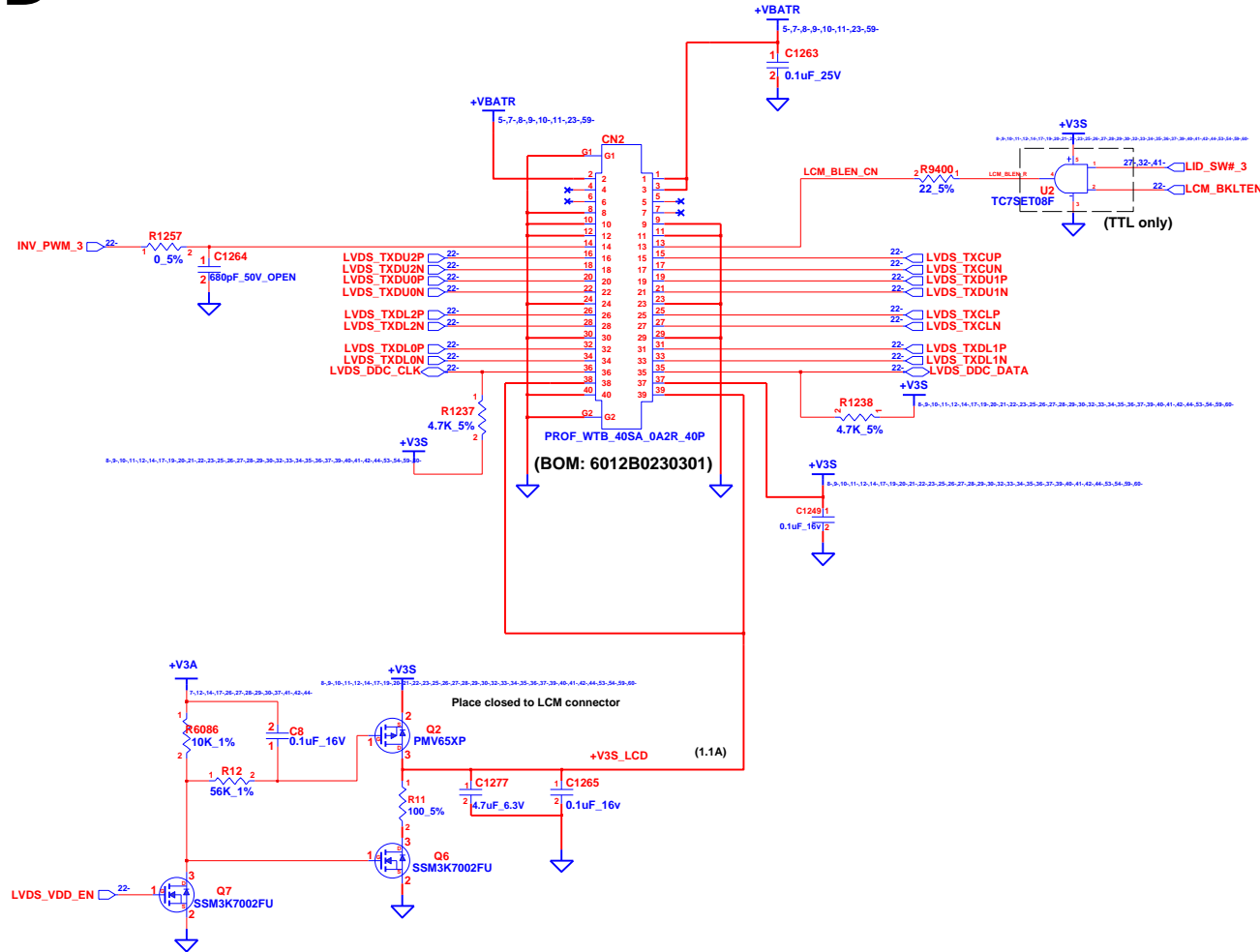
INVENTEC

TITLE			
PIXIES			
Travis (DP to LVDS)			
SIZE	CODE	DOC. NUMBER	REV
A3	CS	6050A24265-0-MTR	01

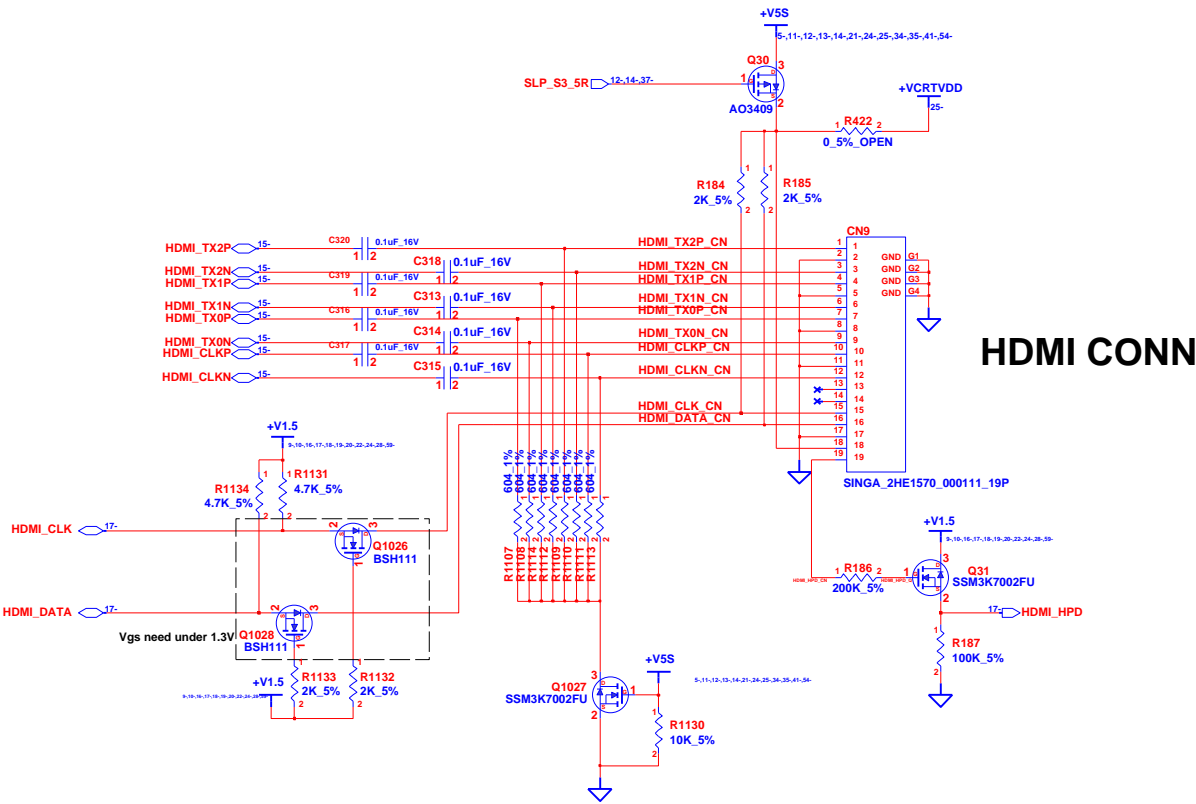
CHANGE by Drawer Name 30-Sep-2010

SHEET 22 OF 60

# LCD



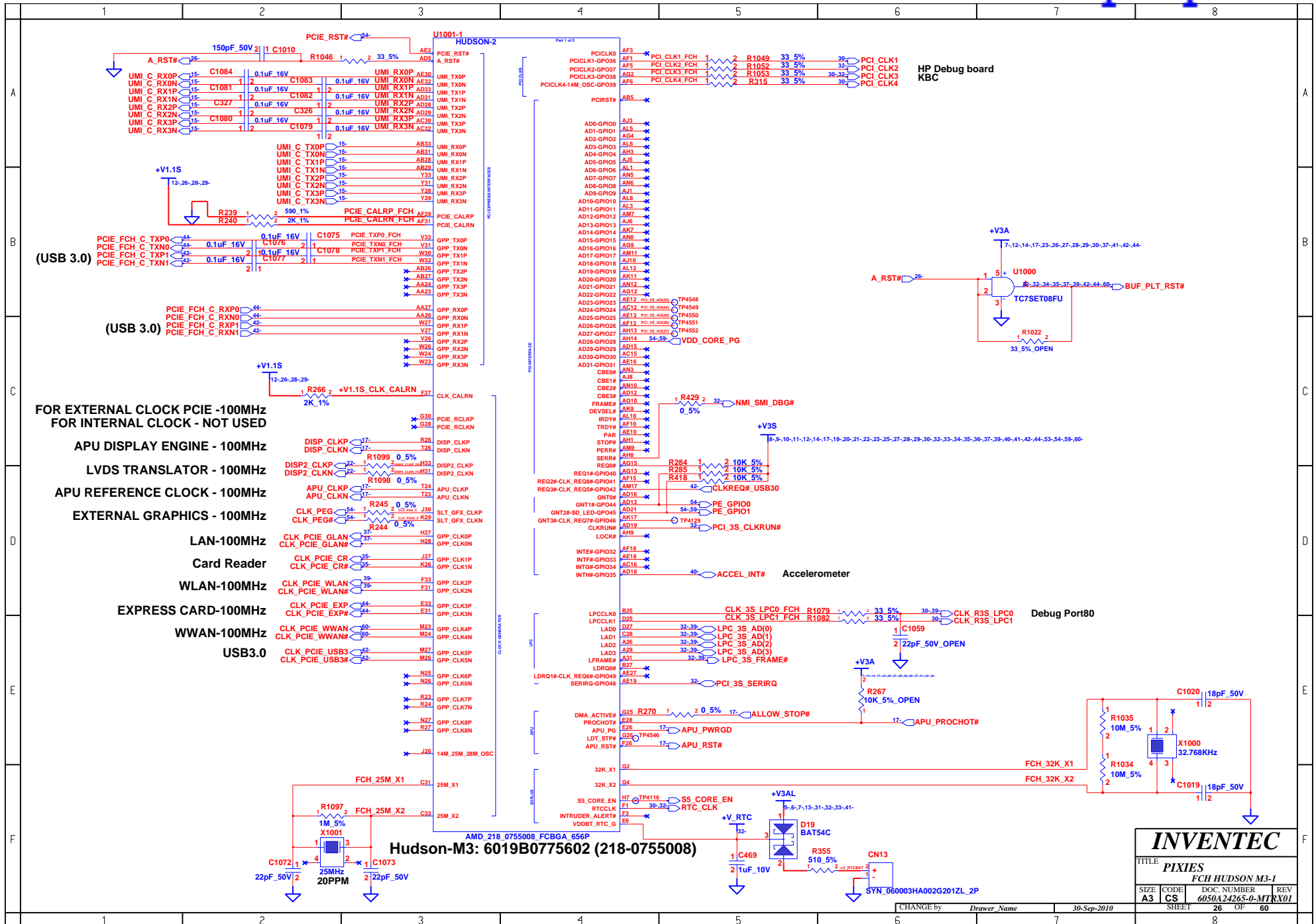
INVENTEC			
TITLE PIXIES LVDS			
SIZE A3	CODE CS	DOC. NUMBER 6050A24265-0-MTR	REV X01
CHANGE by Drawer Name		30-Sep-2010	SHEET 23 OF 60



INVENTEC			
TITLE PIXIES HDMI CONN			
SIZE A3	CODE CS	DOC. NUMBER 6050A24265-0-MTRX01	REV
CHANGE by Drawer Name		27-Sep-2003	SHEET 24 OF 60



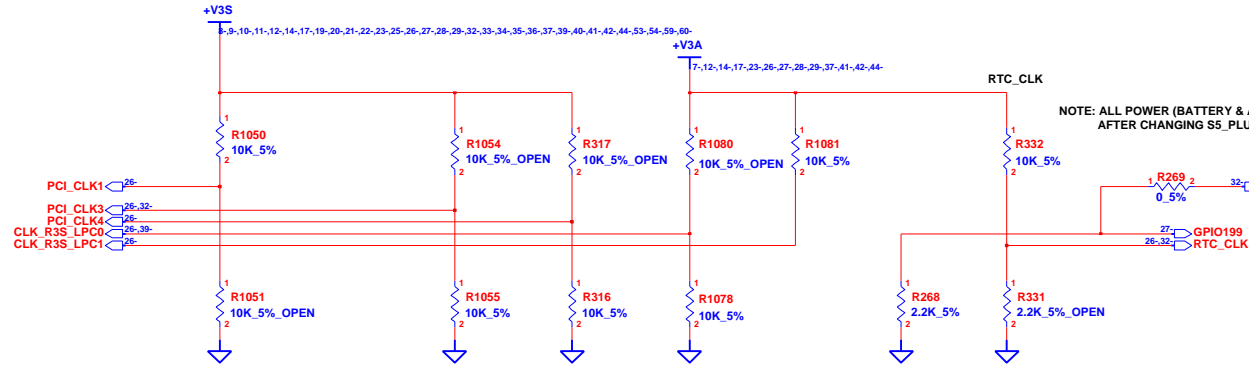












## Required Straps:

	PCI_CLK1	PCI_CLK3	PCI_CLK4	LPC_CLK0	LPC_CLK1	(GPIO199) EC_PWM2	RTC_CLK
<b>PULL HIGH</b>	ALLOW PCIe Gen2 (default)	USE DEBUG STRAP	non_Fusion CLOCK MODE	EC ENABLED	CLKGEN ENABLED (Internal) (default)	LPC ROM	S5 Plus mode DISABLE (default)
<b>PULL LOW</b>	FORCE PCIe Gen1	IGNORE DEBUG STRAP (default)	FUSION CLOCK MODE (default)	EC DISABLED (default)	CLKGEN DISABLED	SPI ROM (default)	S5 Plus mode ENABLE

(PCI\_3S\_AD(27..23): No connected.)

## Debug Straps

FCH HAS 15K INTERNAL PU FOR PCI\_AD[27:23]

	PCI_3S_AD(27)	PCI_3S_AD(26)	PCI_3S_AD(25)	PCI_3S_AD(24)	PCI_3S_AD(23)
<b>PULL HIGH</b>	USE PCI PLL (default)	DISABLE ILA AUTORUN (default)	USE FC PLL (default)	USE DEFAULT PCIE STRAPS (default)	DISABLE PCI MEM BOOT (default)
<b>PULL LOW</b>	BYPASS PCI PLL	ENABLE ILA AUTORUN	BYPASS FC PLL	USE EEPROM PCIE STRAPS	ENABLE PCI MEM BOOT

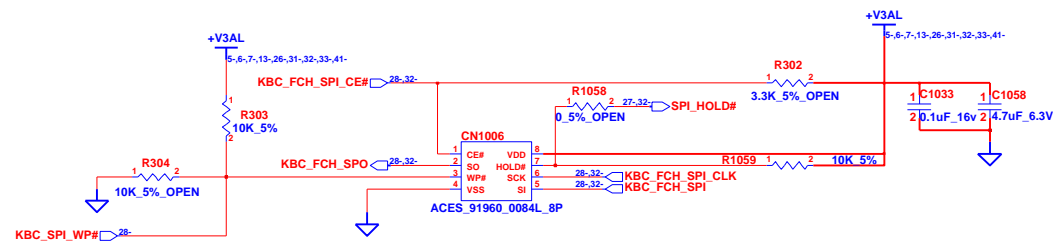
**INVENTEC**TITLE  
**PIXIES**  
**FCH HUDSON M3-5**SIZE CODE DOC. NUMBER REV  
**A3 CS 6050A24265-0-MTRX01**CHANGE by *Drawer Name* 30-Sep-2010

SHEET 30 OF 60

**SPI Socket P/N:6026B0150101**  
**SPI ROM P/N:6019B0614401**

**SPI Socket P/N:6026B0150101**

**SPI ROM P/N:6019B0614401**



TITLE			
<b>PIXIES</b> <b>BIOS ROM (SPI)</b>			
SIZE	CODE	DOC. NUMBER	REV
<b>A3</b>	<b>CS</b>	<b>6050A24265-0-MTRX01</b>	
SHEET		31	OF 60

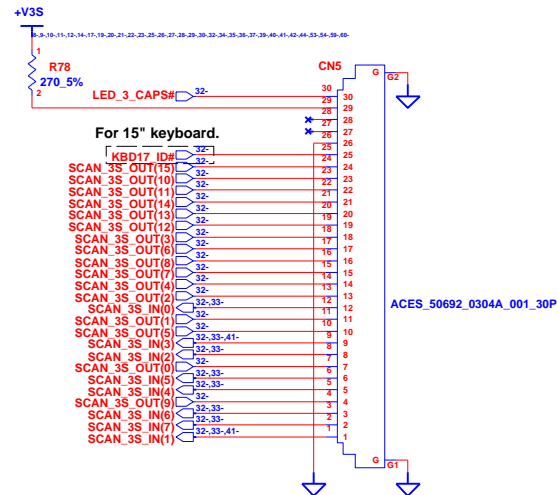
CHANGE by	<i>Drawer Name</i>	<i>30-Sep-2010</i>
-----------	--------------------	--------------------

CS 6050A24265-0-M1K  
SHEET 31 OF 60

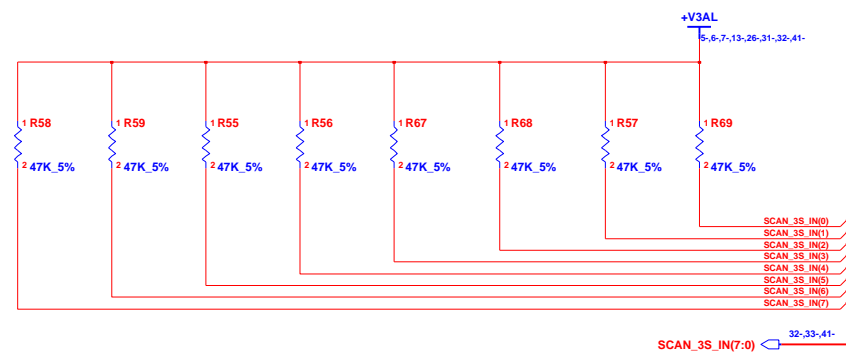




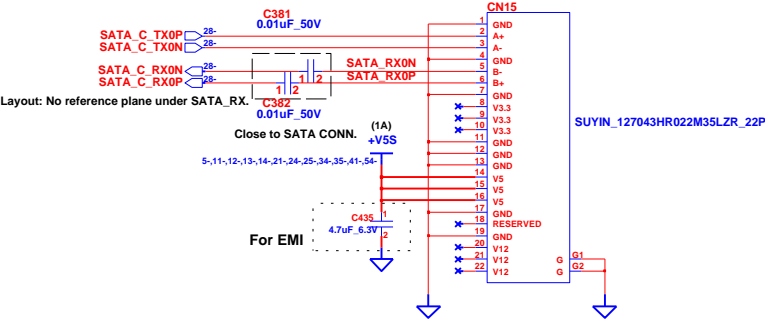
## Keyboard CONN



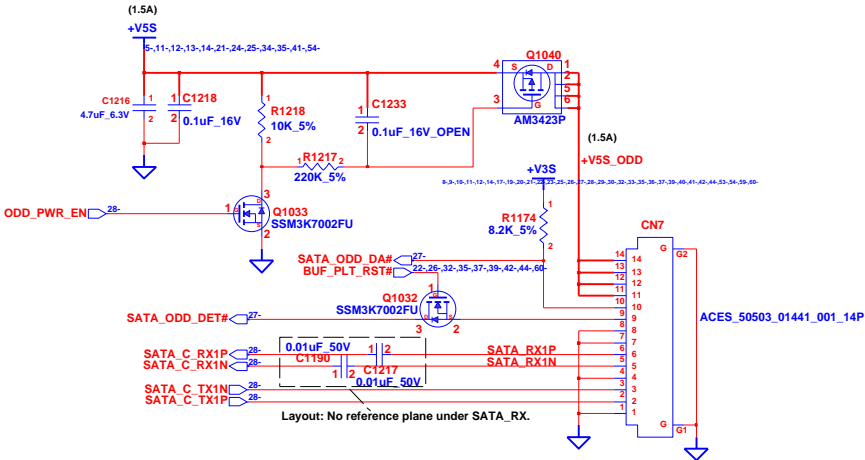
**9/9 : Removed T/P CONN CN1000**



<b>INVENTEC</b>			
TITLE <b>PIXIES</b> <i>Keyboard &amp; TouchPad CONN</i>			
SIZE <b>A3</b>	CODE <b>CS</b>	DOC. NUMBER <b>6050A24265-0-MTRX01</b>	REV
SHEET		33	OF 60

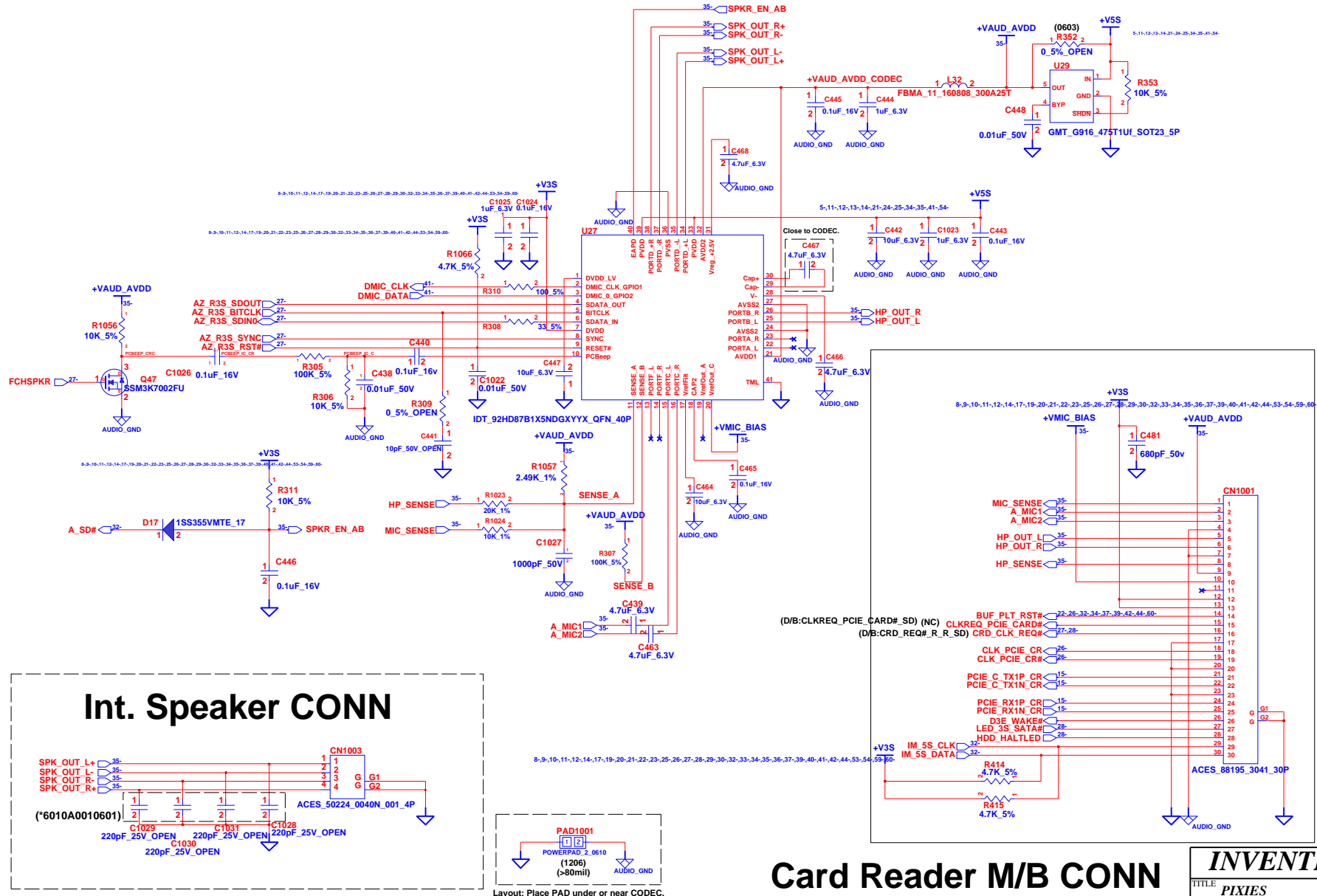


SATA HDD



SATA ODD

INVENTEC			
TITLE			
PIXIES			
SATA HDD & ODD CONN			
SIZE	CODE	DOC. NUMBER	REV
A3	CS	6050A24265-0-MTRX01	
CHANGE by		Drawer Name	30-Sep-2010
SHEET		34	OF 60

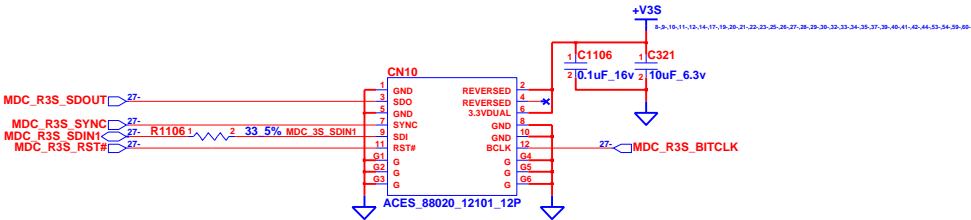


## Card Reader M/B CONN

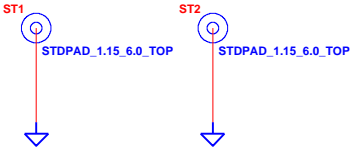
**INVENTEC**

TITLE PIXIES AUDIO CODEC-1			
SIZE A3	CODE CS	DOC. NUMBER 6050A24265-0-MTRX01	REV REV
SHEET 35		OF 60	

CHANGE by Drawer Name 30-Sep-2010



MODEM

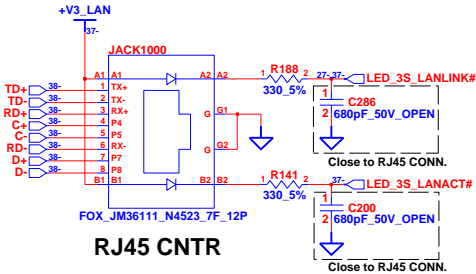
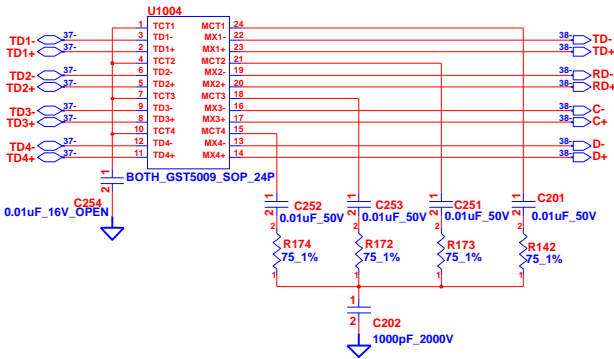


INVENTEC			
TITLE PIXIES MDC CONN			
SIZE A3	CODE CS	DOC. NUMBER 6050A24265-0-MTRX01	REV 1
CHANGE by Drawer Name		30-Sep-2010	SHEET 36 OF 60



LAYOUT NOTE:

To place one 0.1uF at each pin 1 , 4 , 7 , 10  
and place the 1uF in the spot that  
is as close as possible to all 4 pins



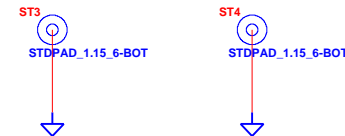
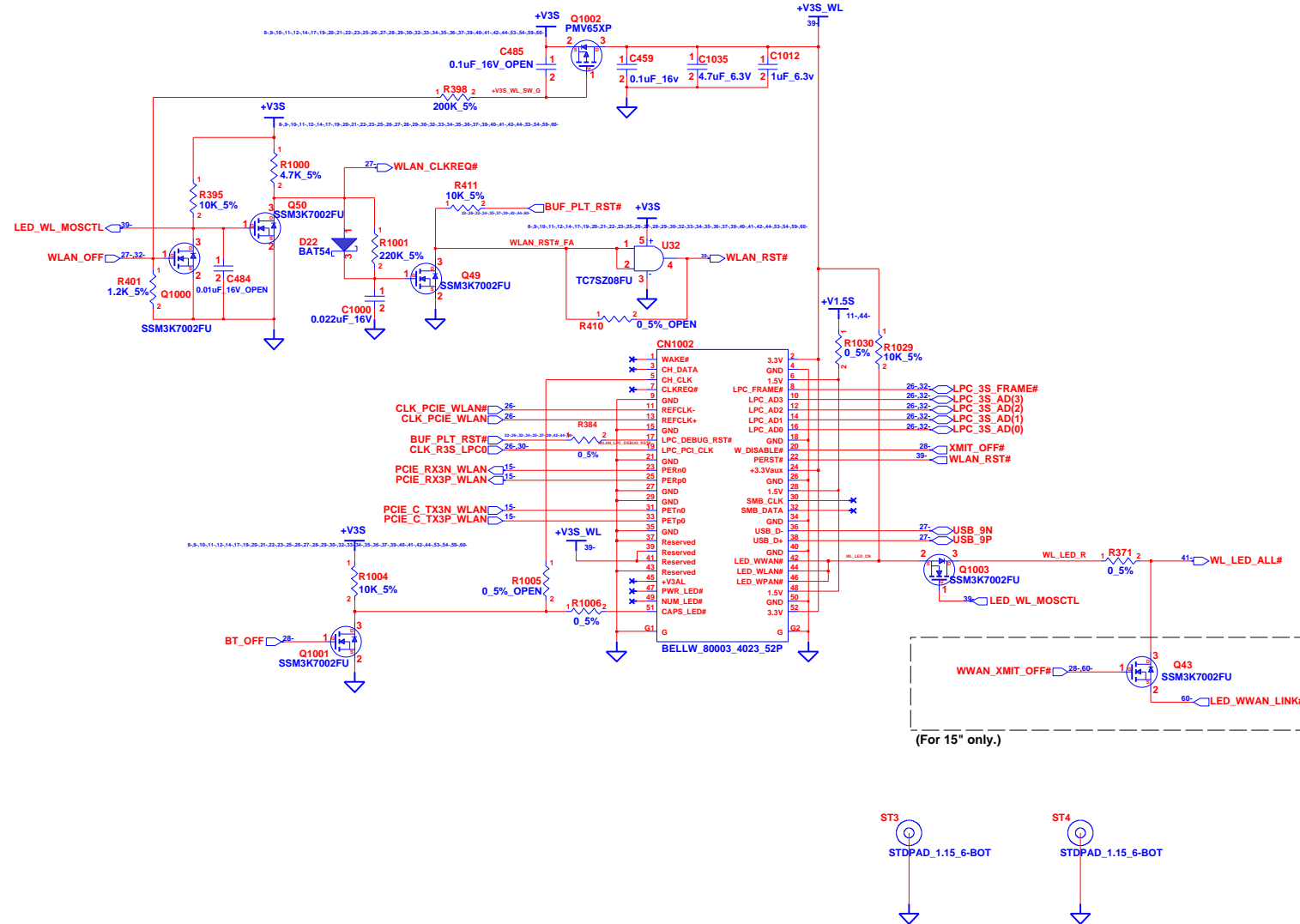
INVENTEC

TITLE  
PIXIES  
Transformer & RJ45 CONN

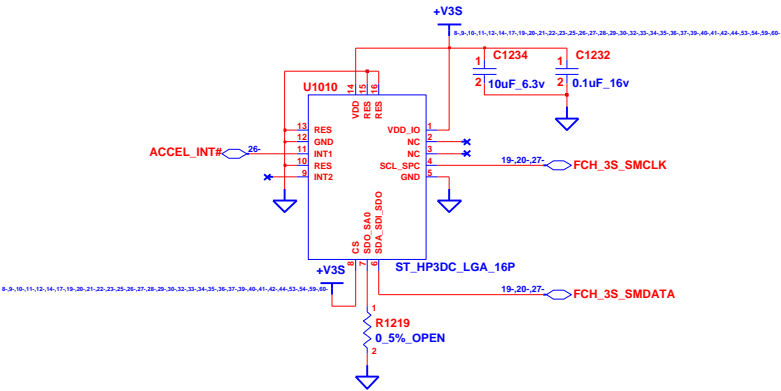
SIZE CODE DOC. NUMBER REV  
A3 CS 6050A24265-0-MTRX01

CHANGE by Drawer Name 30-Sep-2010

SHEET 38 OF 60



INVENTEC			
TITLE PIXIES MINI CARD (WLAN)			
SIZE A3	CODE CS	DOC. NUMBER 6050A24265-0-MTRX01	REV REV
CHANGE by Drawer Name		30-Sep-2010	SHEET 39 OF 60



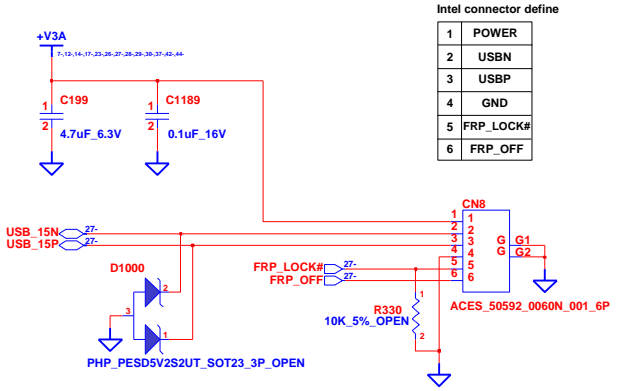
Accelerometer

INVENTEC			
TITLE PIXIES ACCELEROMETER			
SIZE A3	CODE CS	DOC. NUMBER 6050A24265-0-MTRX01	REV 1

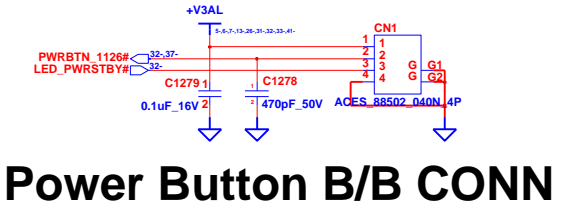
CHANGE by *Drawer Name* 30-Sep-2010

SHEET 40 OF 60

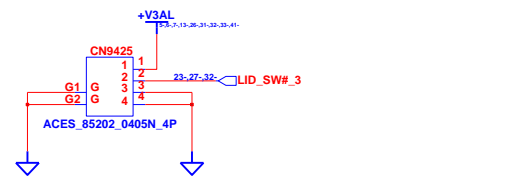




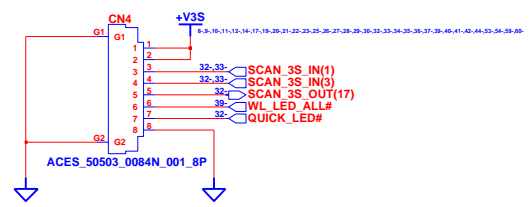
Finger Printer CONN



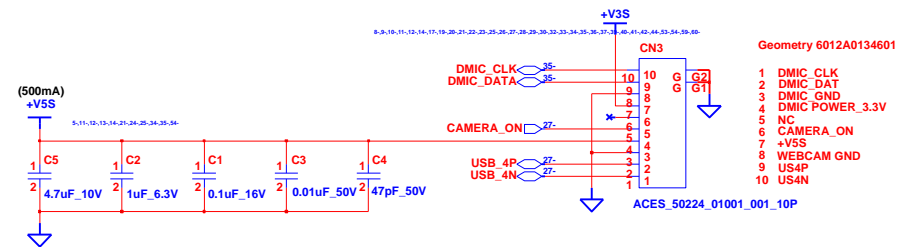
Power Button B/B CONN



LID SWITCH B/B CONN



Quick Launch B/B CONN



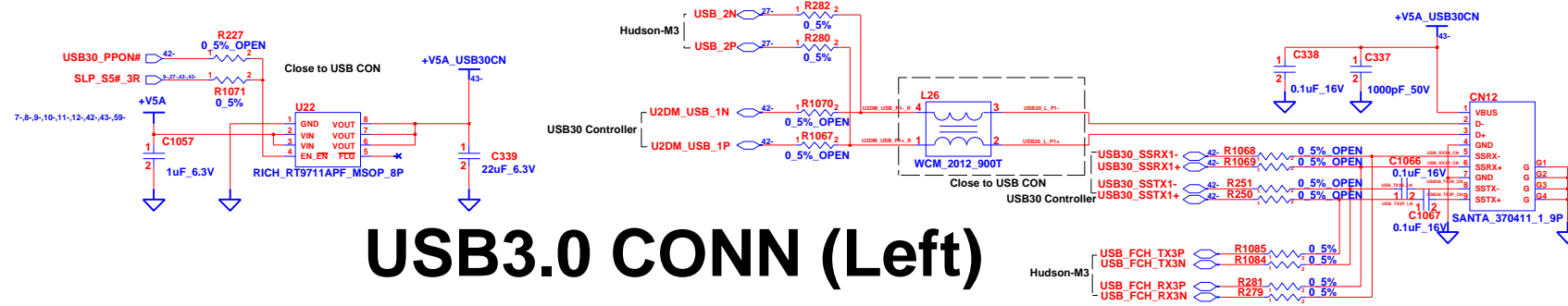
DMIC / WebCAM

INVENTEC			
TITLE PIXIES			
PWR&FP&Launch&Web/DMIC CONN			
SIZE A3	CODE CS	DOC. NUMBER 6050A24265-0-MTRX01	REV
CHANGE by		Drawer Name	30-Sep-2010
SHEET		41	OF 60

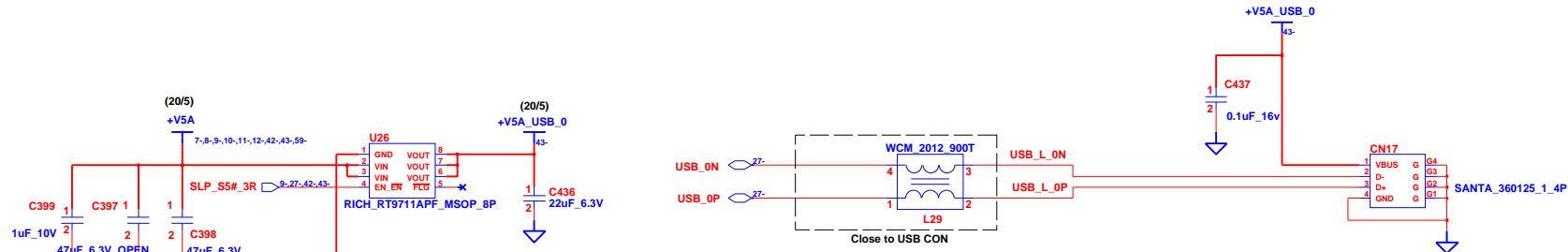
**BOM : OPEN**

<b>INVENTEC</b>			
TITLE <b>PIXIES</b> <b>USB3.0 Controller</b>			
SIZE <b>A3</b>	CODE <b>CS</b>	DOC. NUMBER <b>6050A24265-0-MTRX01</b>	REV
SHEET		42	OF 60

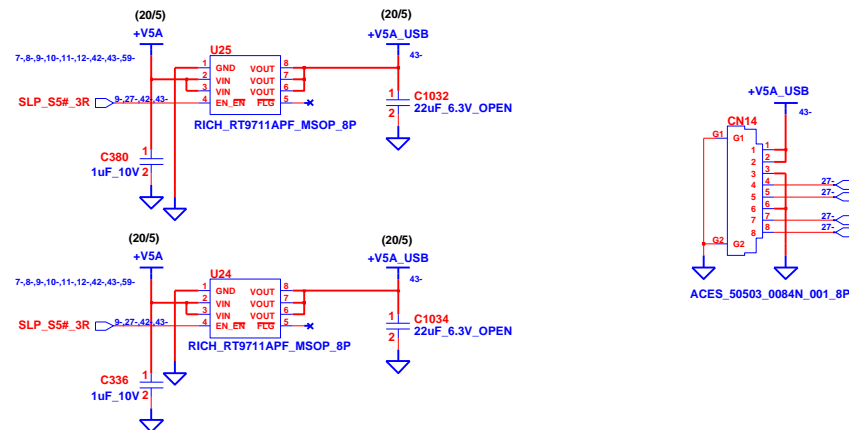
## USB3.0 CONN (Left)



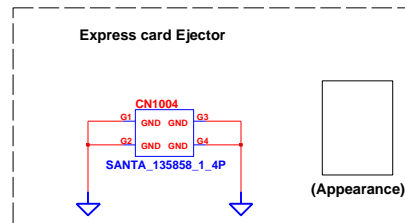
## USB CONN (Left)



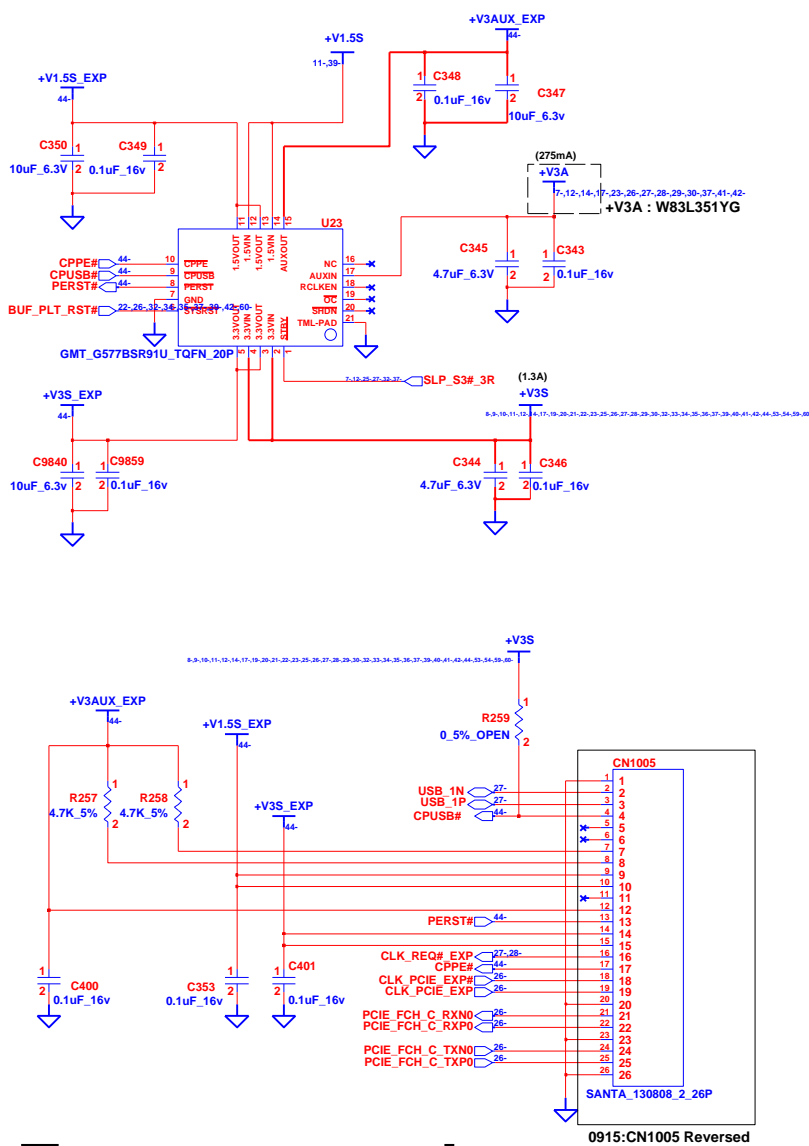
## USB B/B CONN (MB Right side)



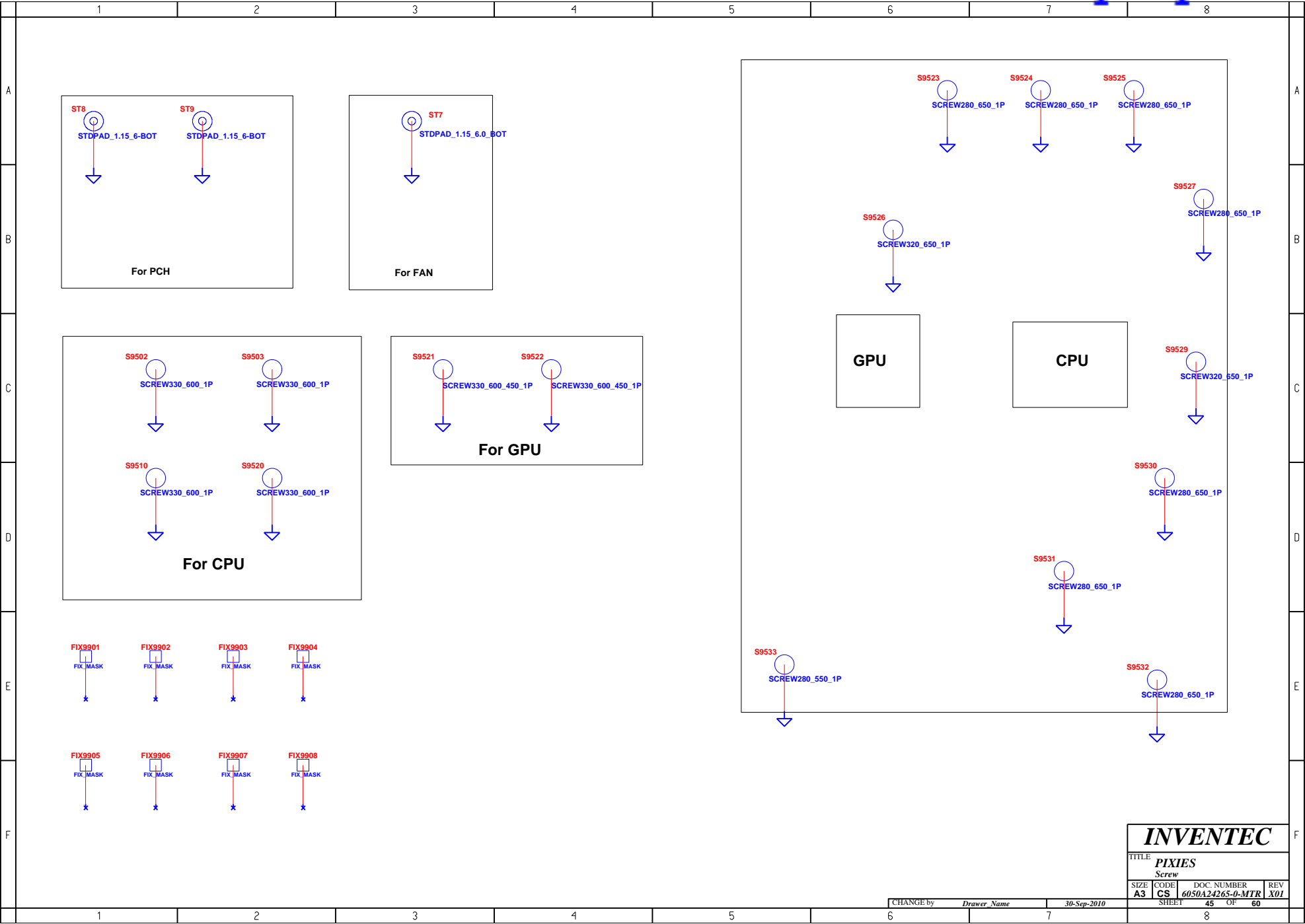
INVENTEC			
TITLE: PIXIES			
USB3.0 & USB2.0 CONN			
SIZE: A3	CODE: CS	DOC. NUMBER: 6050A24265-0-MT	REV: RX01
CHANGE by: Drawer Name		30-Sep-2010	
SHEET: 43		OF: 60	

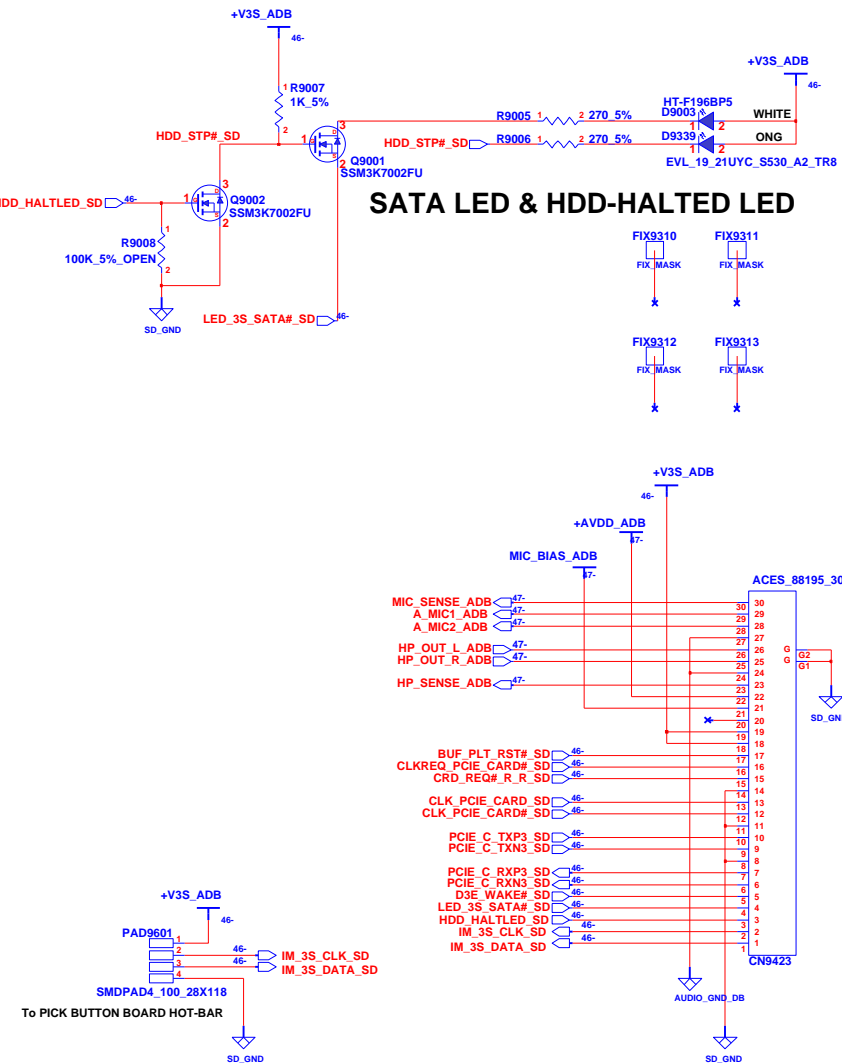


# Express card

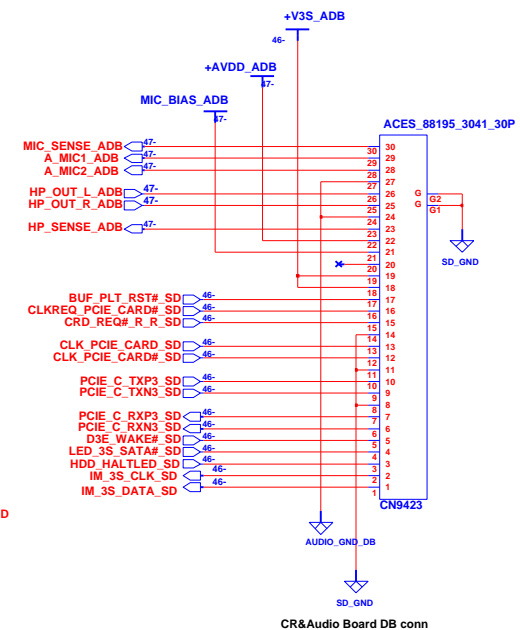


INVENTEC			
TITLE PIXIES Express Card			
SIZE A3	CODE CS	DOC. NUMBER 6050A24265-0-MTRX01	REV 1
CHANGE by Drawer Name		30-Sep-2010	SHEET 44 OF 60





## SATA LED & HDD-HALTED LED



CR&amp;Audio Board DB conn

INVENTEC

TITLE	<b>PIXIES</b> <i>3in1 CR&amp;Audio jack daughter board-1</i>
-------	---

SIZE	CODE	DOC. NUMBER	REV
A3	CS	6050A24265-0-MTRX01	

CHANGE by	<i>Drawer Name</i>	<i>30-Sep-2010</i>
-----------	--------------------	--------------------

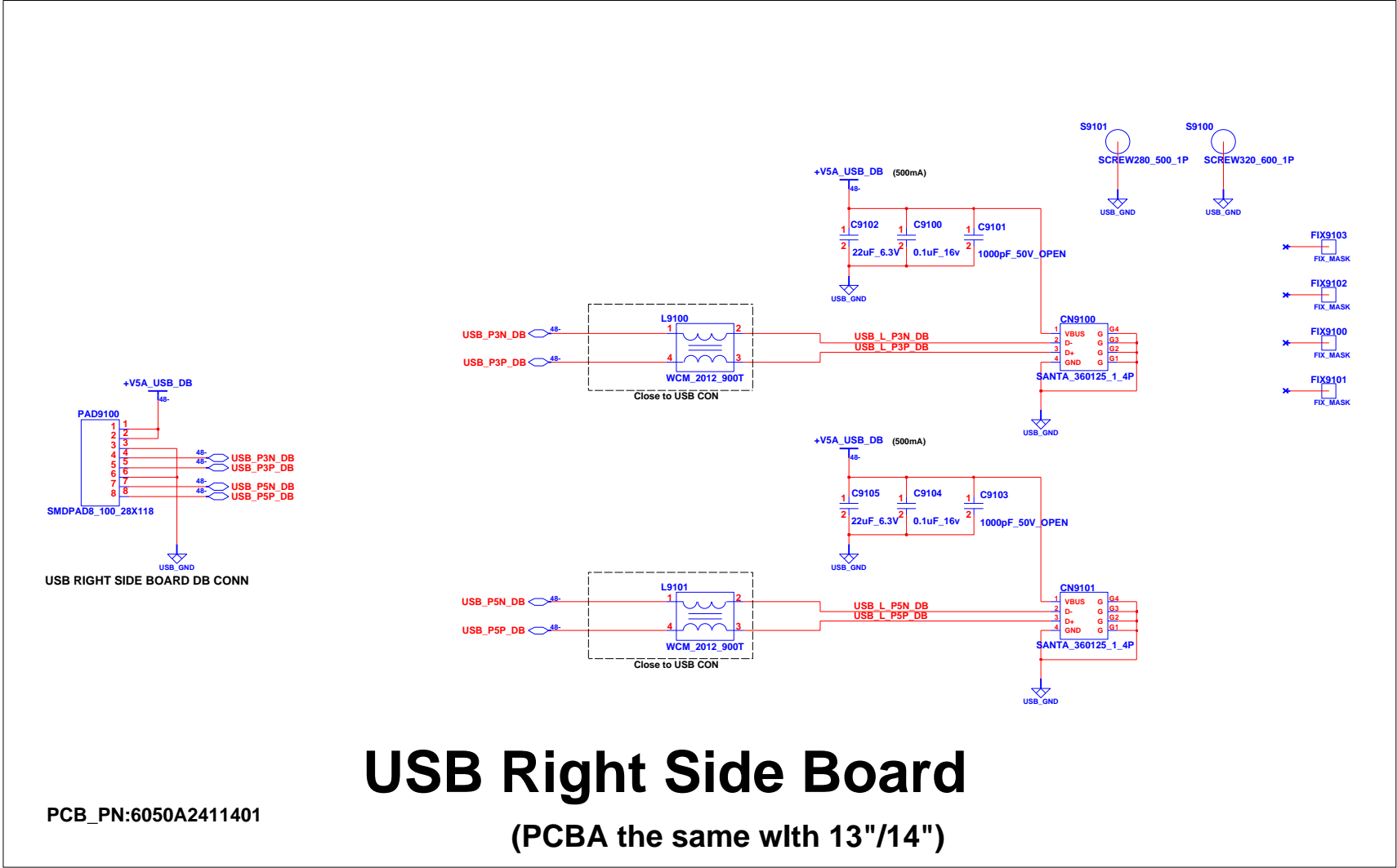
CS	6050A24265-0-MTR
SHEET	46 OF 60

## Card READER & AUDIO BOARD 2/2

**INVENTEC**

TITLE			
<b>PIXIES</b>			
3 in 1 Card Reader daughter board-2			
SIZE	CODE	DOC. NUMBER	REV
<b>A3</b>	<b>CS</b>	<b>6050A24265-0-MTRX01</b>	
SHEET		47	OF 60

CHANGE by	<i>Drawer Name</i>	30-Sep-2010
-----------	--------------------	-------------



# USB Right Side Board

(PCBA the same wltH 13"/14")

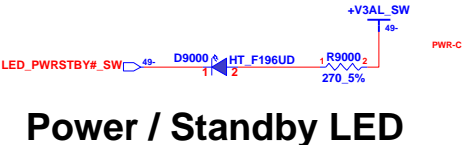
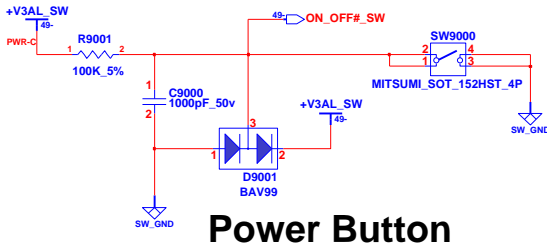
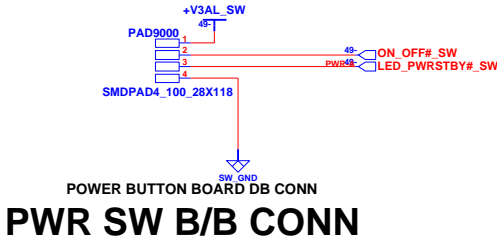
PCB\_PN:6050A2411401

INVENTEC

TITLE			
PIXIES			
USB Board (Right side)			
SIZE	CODE	DOC. NUMBER	REV
A3	CS	6050A24265-0-MTR	X01
SHEET		48	OF 60

CHANGE by Drawer Name 30-Sep-2010





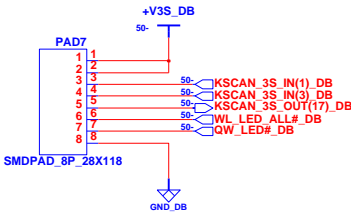
PCB\_PN:6050A2411201

**Power Button Board**  
(PCBA the same with 13"/14")

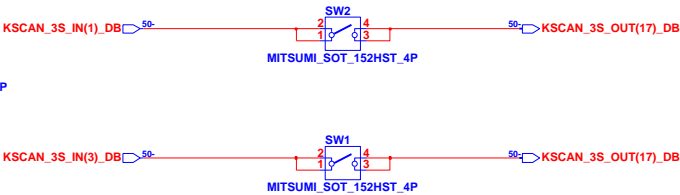
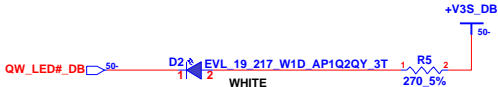
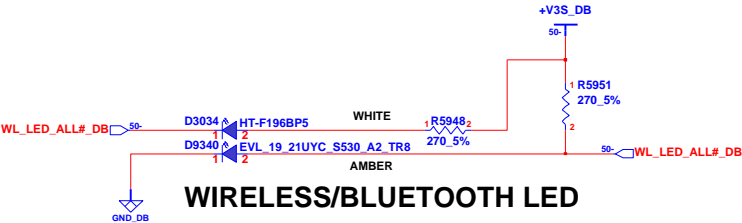
INVENTEC			
TITLE PIXIES Power Button Board			
SIZE A3	CODE CS	DOC. NUMBER 6050A24265-0-MTR	REV X01
CHANGE by Drawer Name		30-Sep-2010	SHEET 49 OF 60

Quick Launch Board

PCB\_PN:6050A2410501

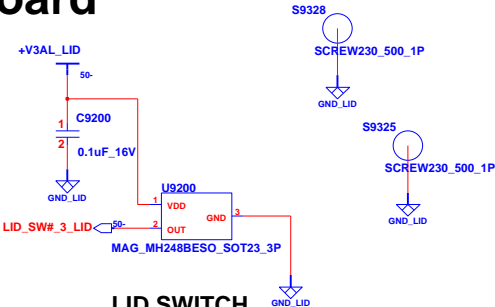
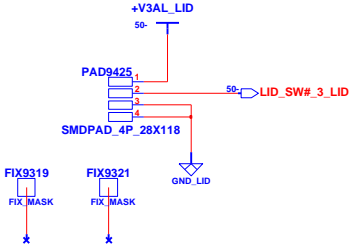


QUICK LAUNCH BOARD DB CONN



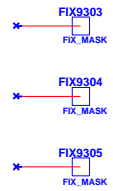
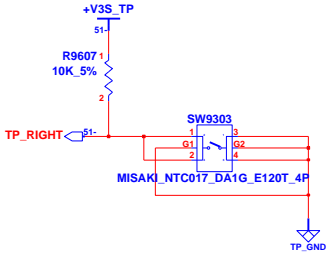
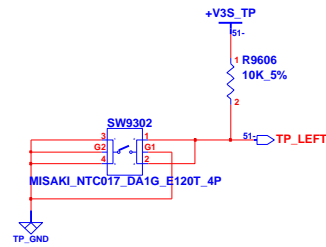
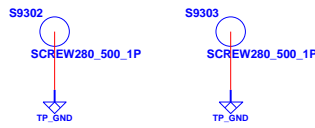
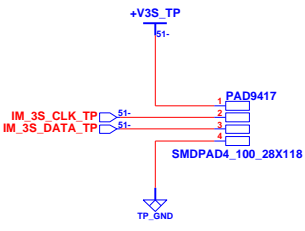
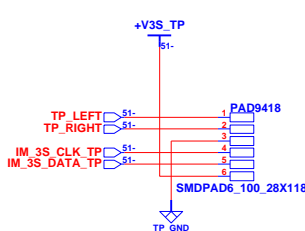
LID SWITCH BOARD Board

PCB\_PN:6050A2414801



LID SWITCH  
Reference Number 9200-9299

INVENTEC			
TITLE: PIXIES			
LID & Quick Launch & WLAN SW Board			
SIZE: A3	CODE: CS	DOC. NUMBER: 6050A24265-0-MTR	REV: X01
SHEET: 50		OF: 60	



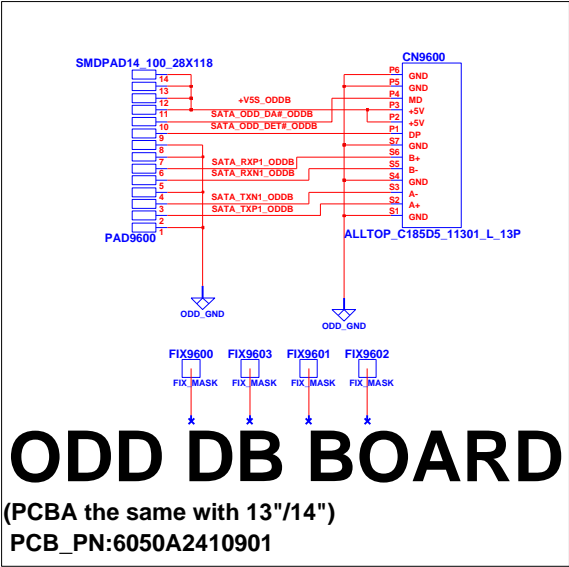
LEFT BUTTON

RIGHT BUTTON

# PICK Button Board

PCB\_PN:6050A2410601

INVENTEC			
TITLE PIXIES Pick Button Board			
SIZE A3	CODE CS	DOC. NUMBER 6050A24265-0-MTR	REV X01
SHEET 51		OF 60	



INVENTEC			
TITLE PIXIES ODD DB Board			
SIZE A3	CODE CS	DOC. NUMBER 6050A24265-0-MTR	REV X01
SHEET		52	OF 60





SIZE <b>A3</b>	CODE <b>CS</b>	DOC. NUMBER <b>6050A24265-0-MTR</b>	REVISION <b>X0</b>
SHEET		55	OF 60

CHANGE by	<i>Drawer Name</i>	<i>30-Sep-2010</i>
-----------	--------------------	--------------------

A3	CS	6050A24265-0-M1R
SHEET		55 OF 60











