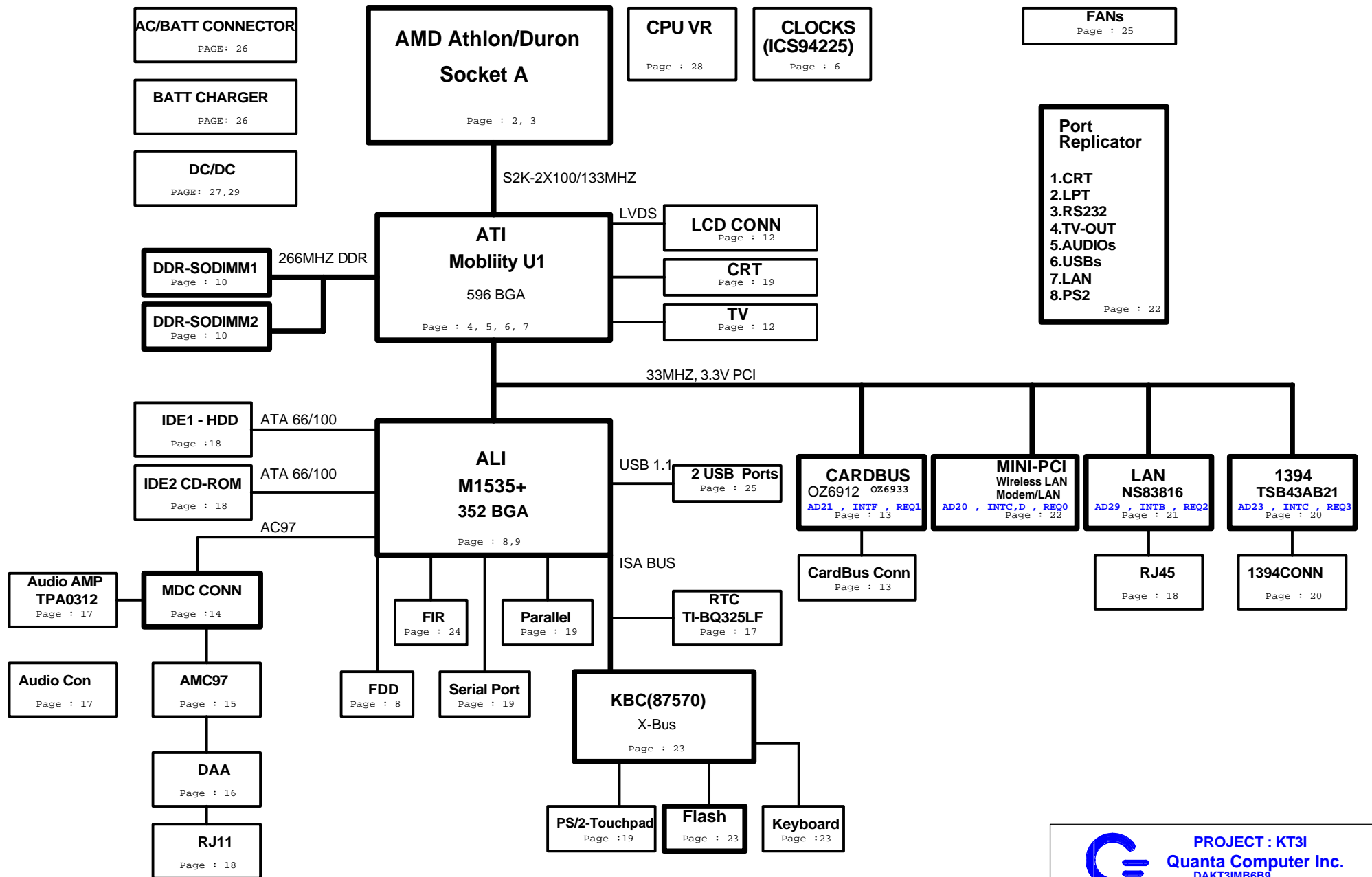
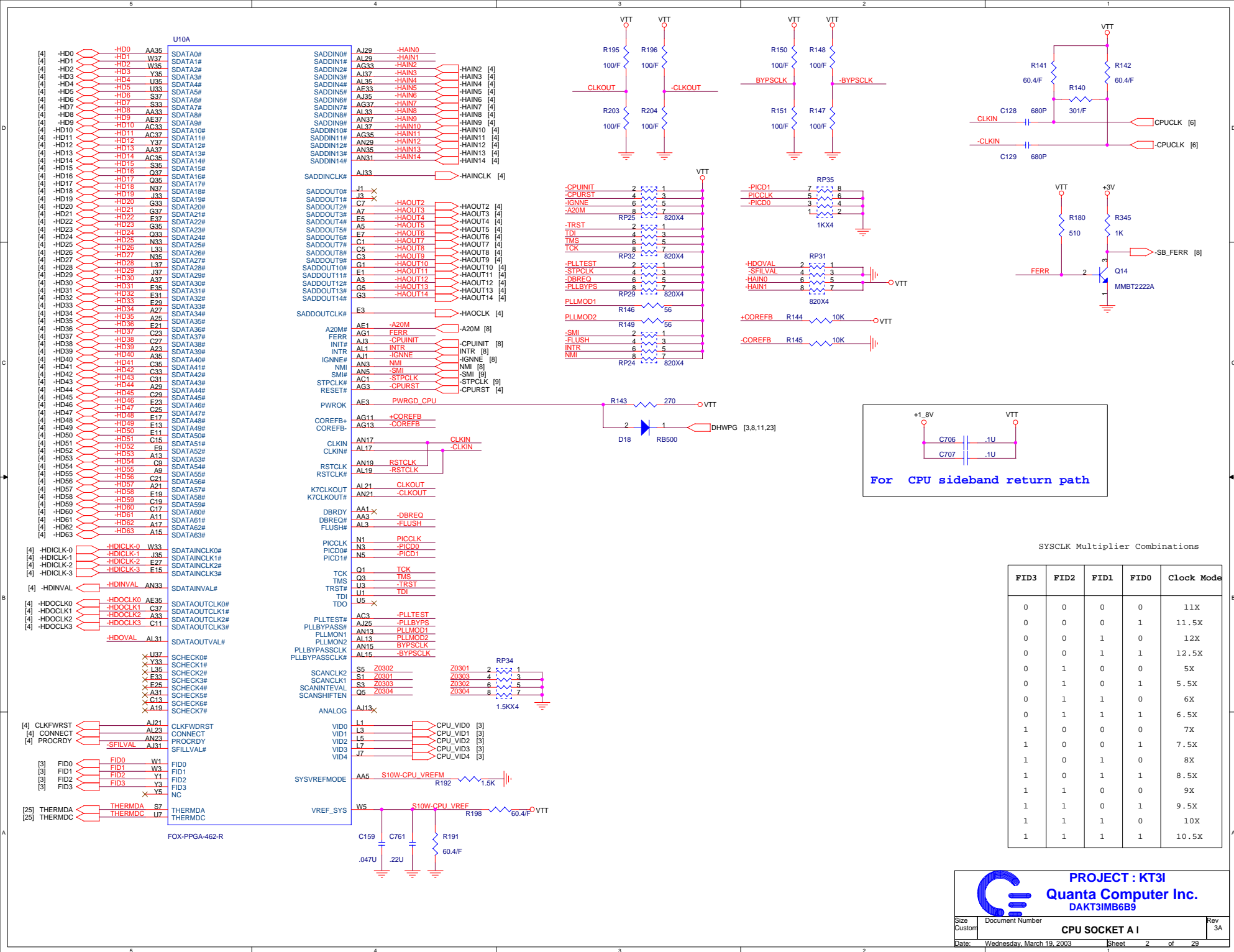
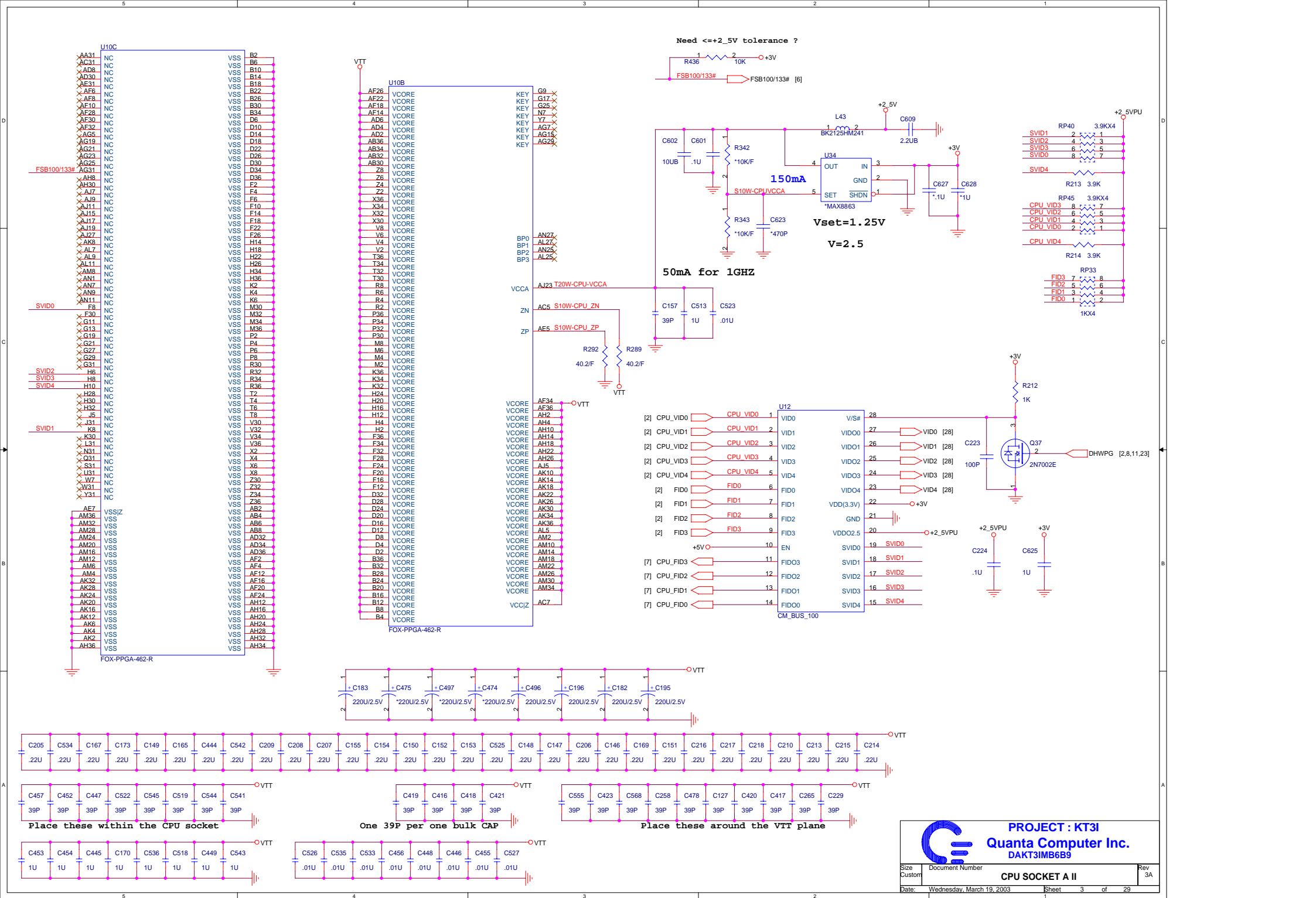
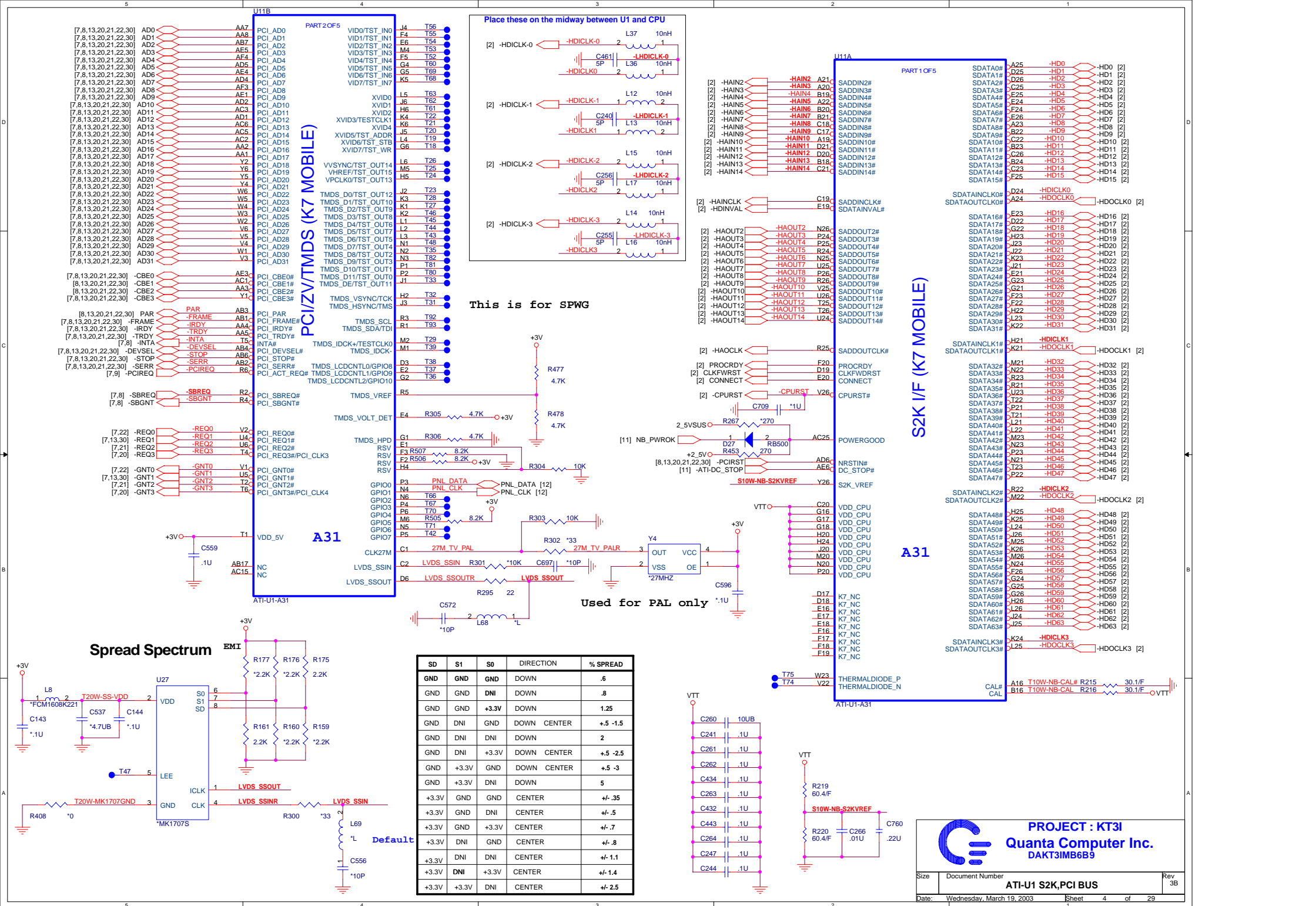


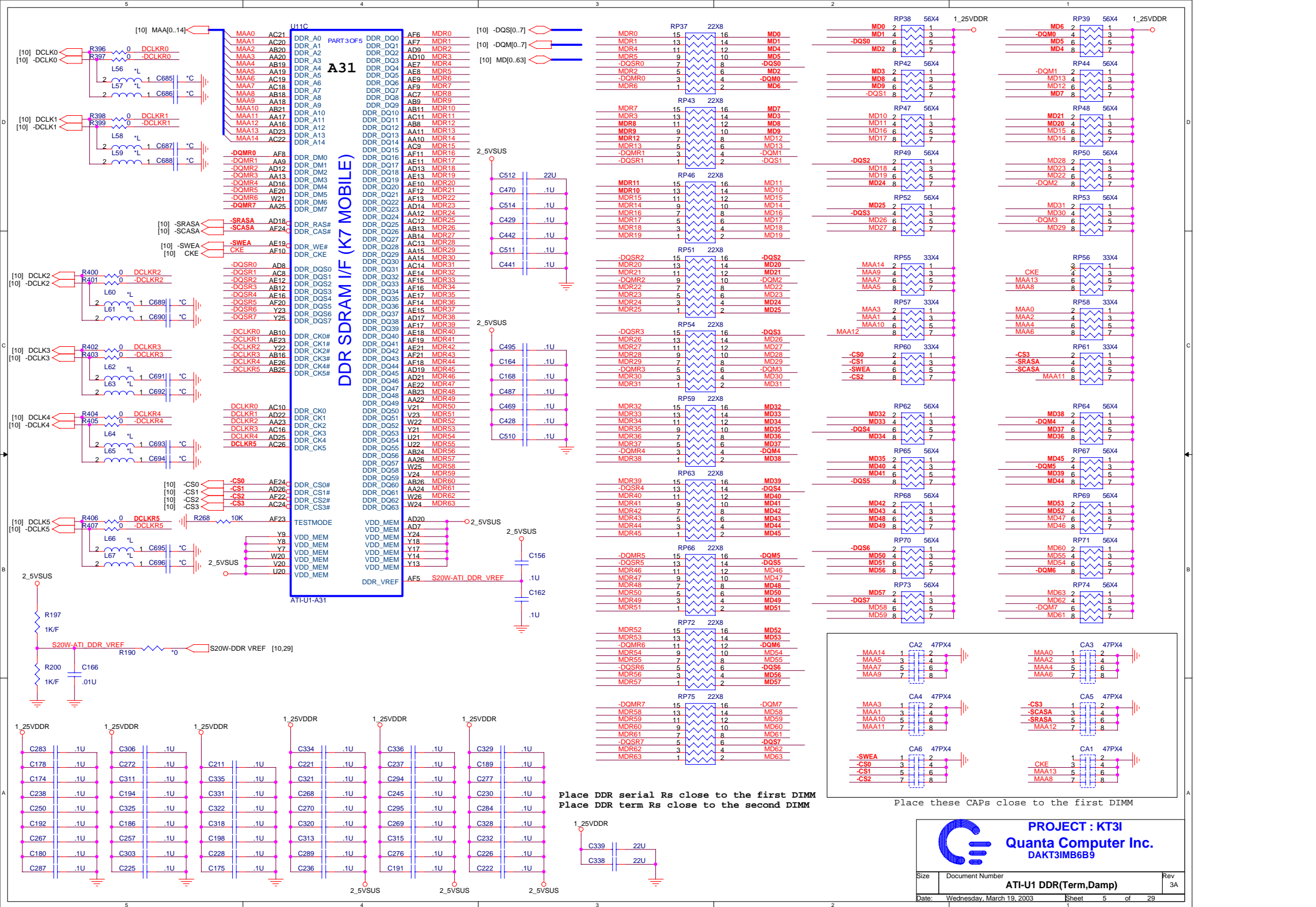
# T2.2



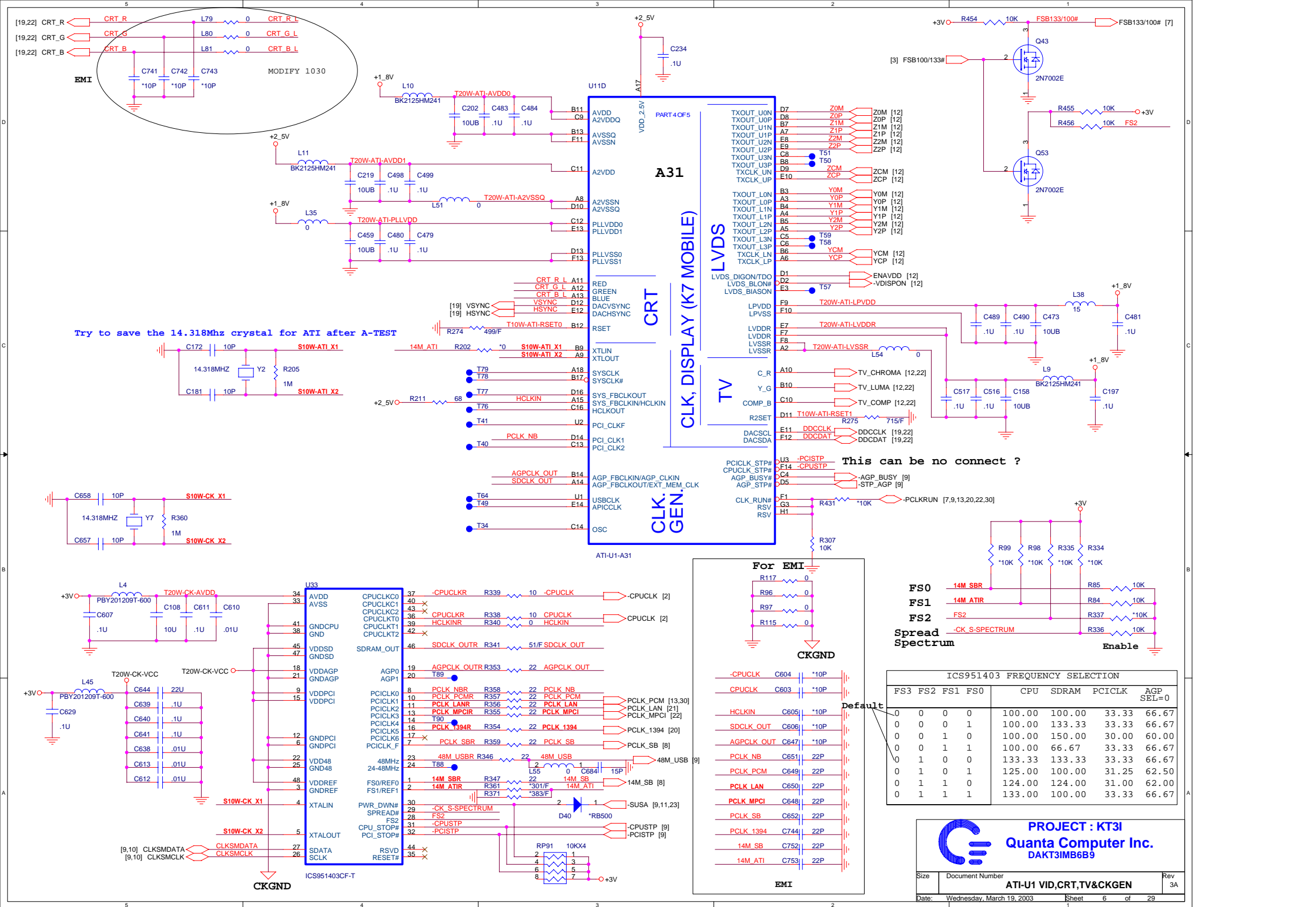




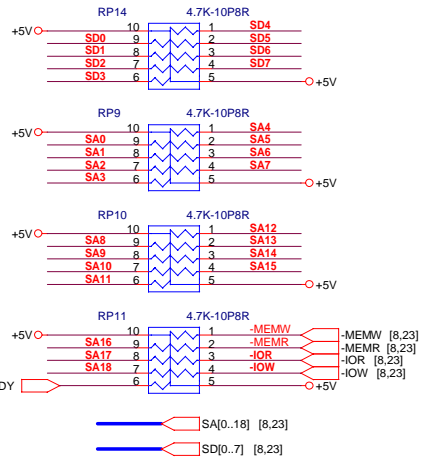




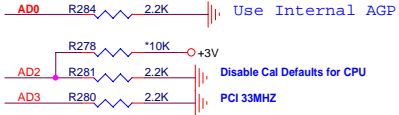
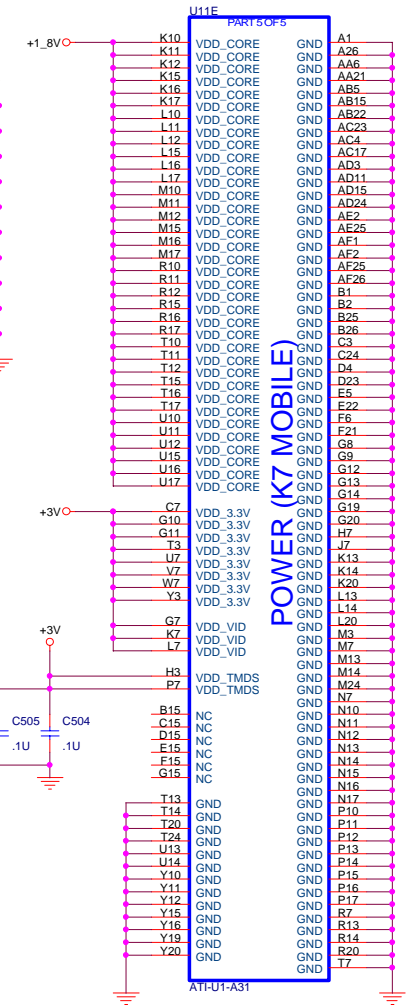
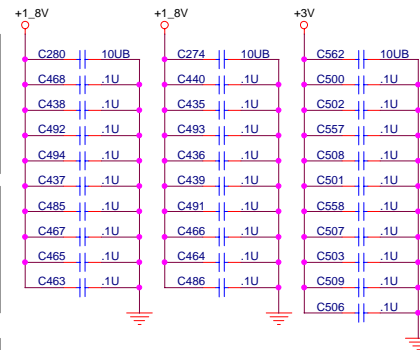
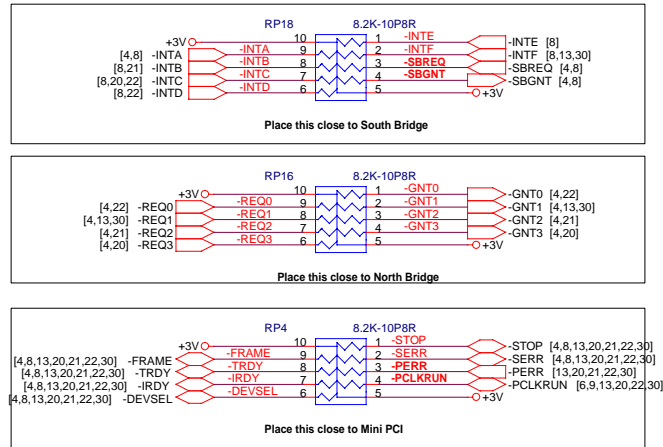




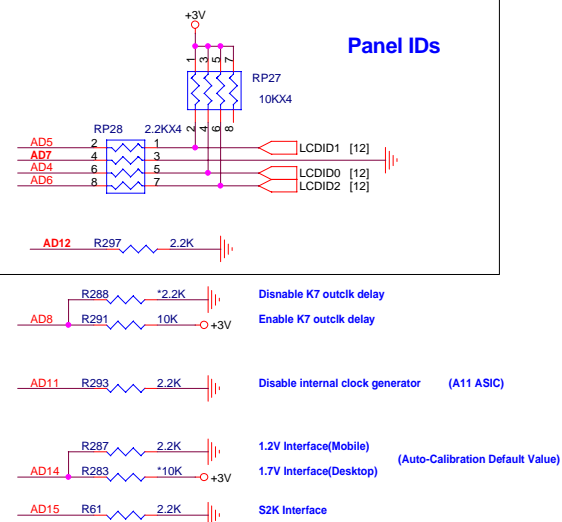
## ISA PU



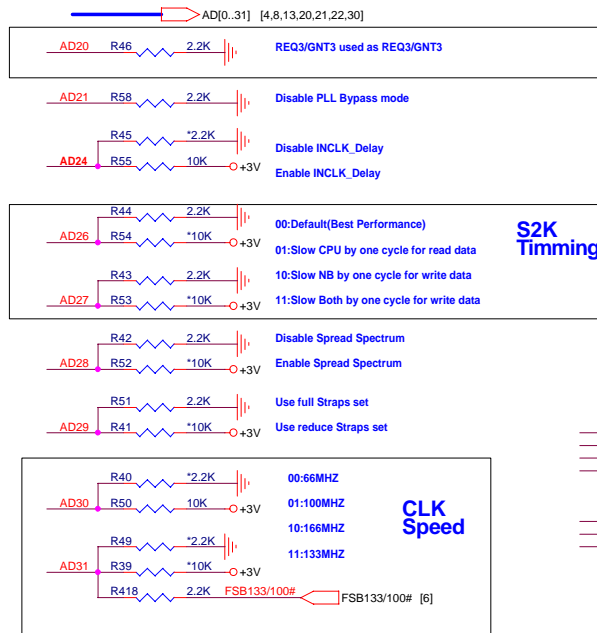
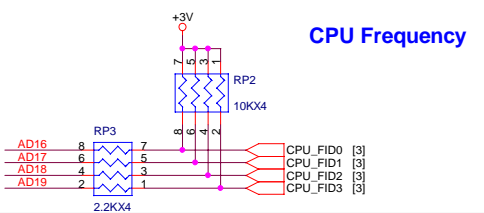
## PCI PU



## Panel IDs

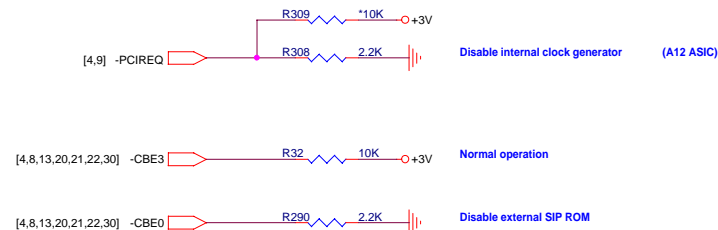
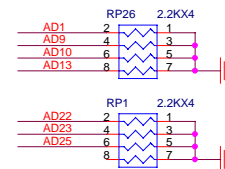


## CPU Frequency



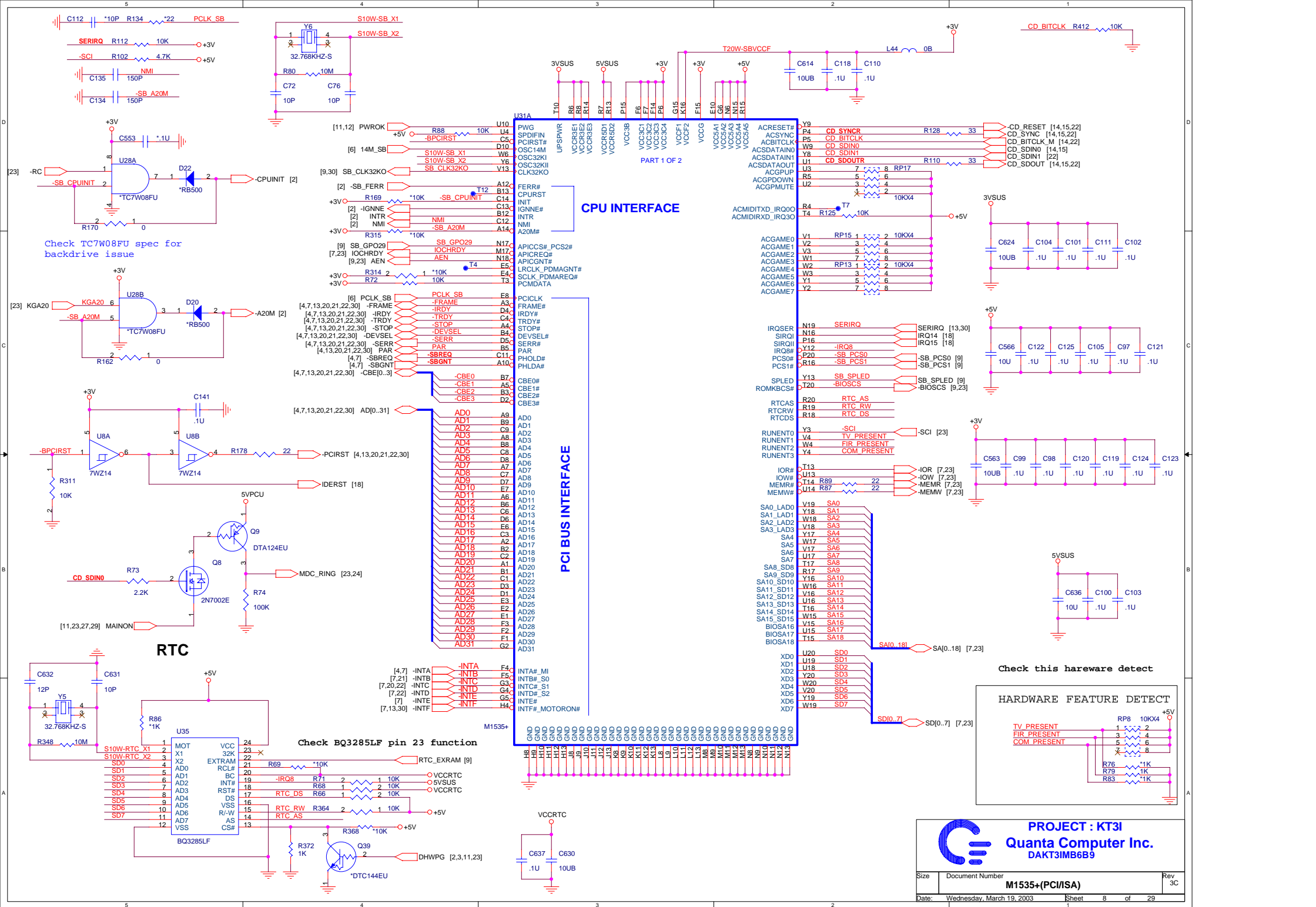
## S2K Timming

## CLK Speed

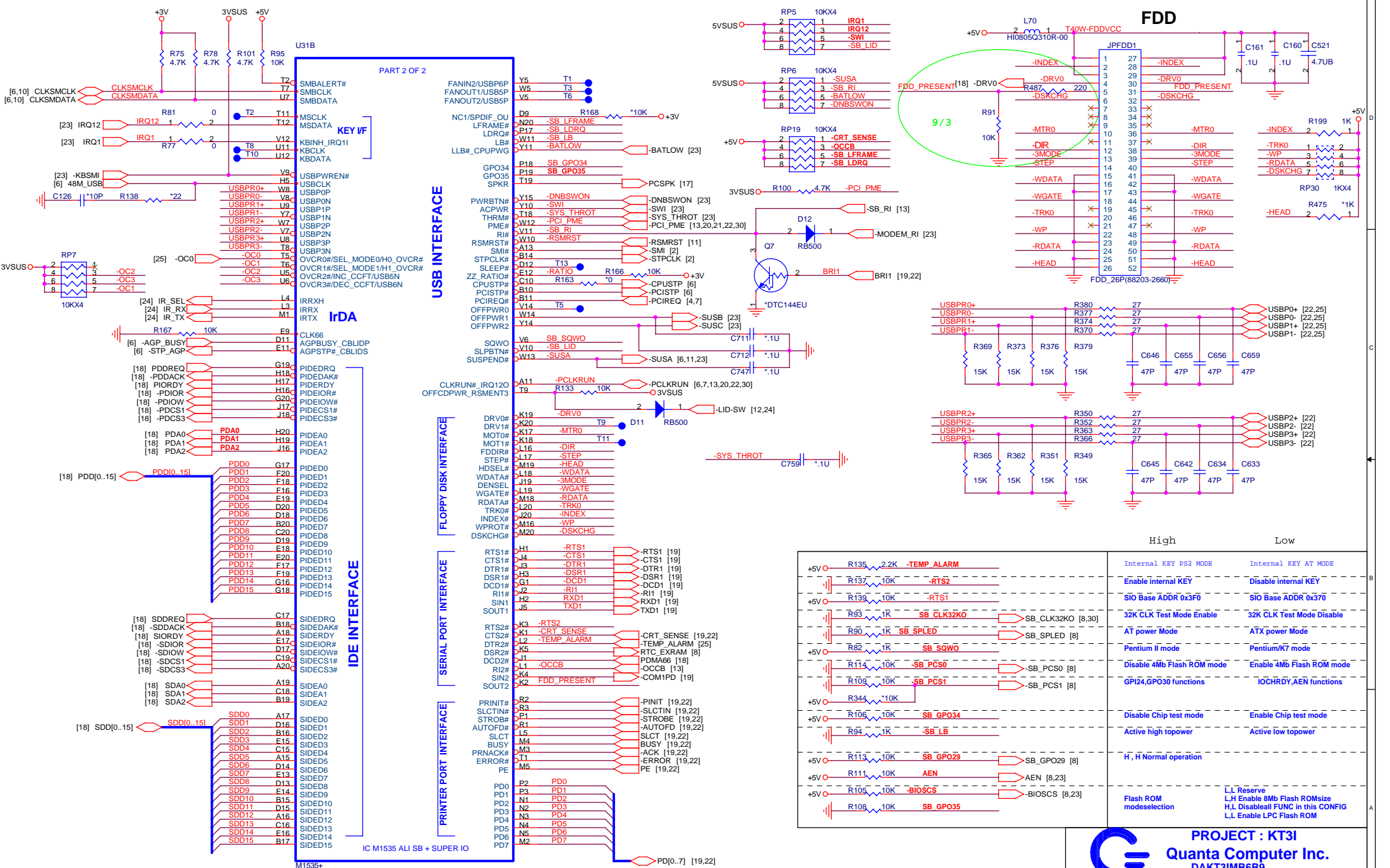


PROJECT : KT31  
Quanta Computer Inc.  
DAKT31MB6B9

Size	Document Number	Rev
	ATI-U1 PWR,GND	2A
Date:	Wednesday, March 19, 2003	Sheet 7 of 29

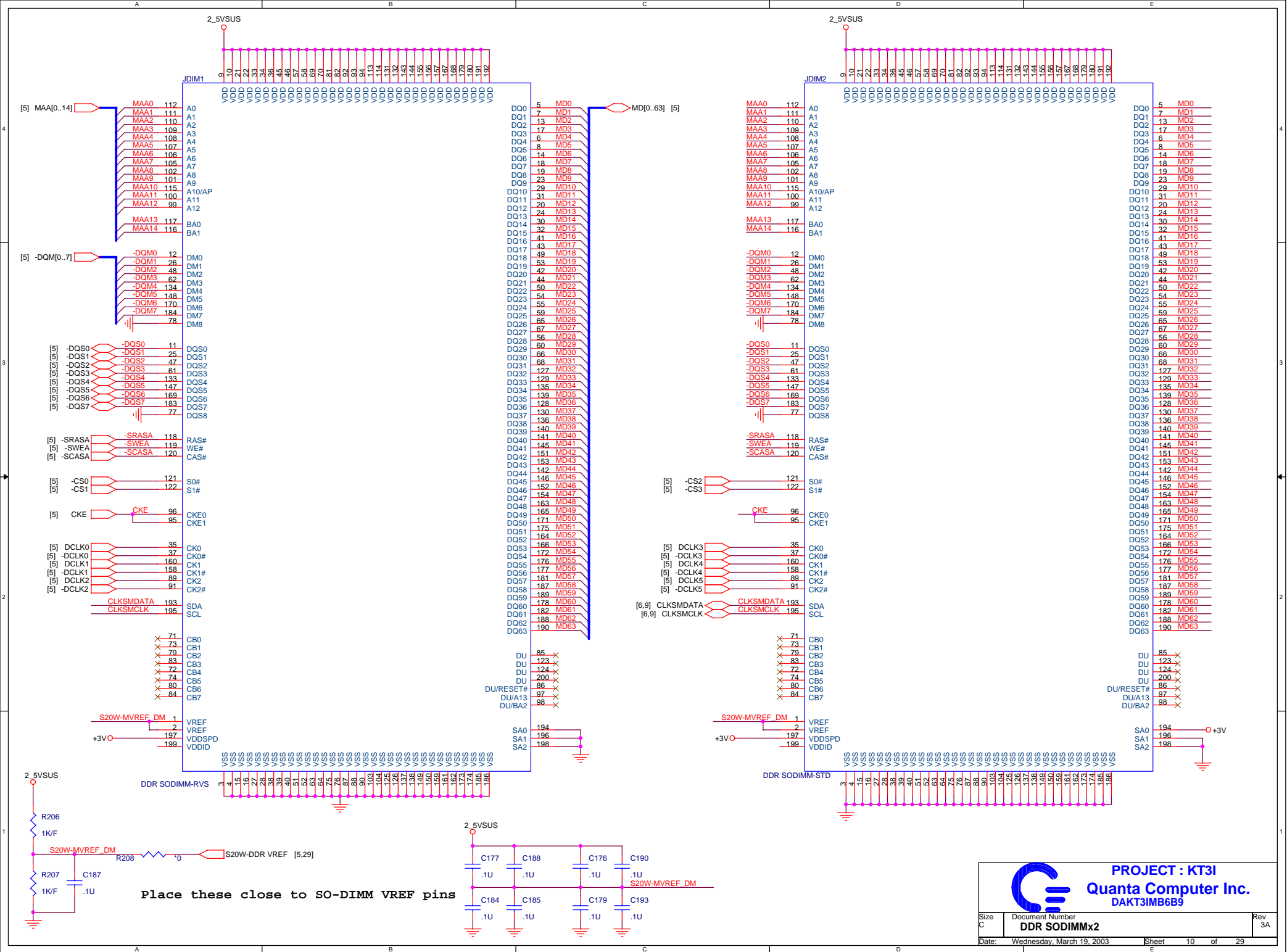


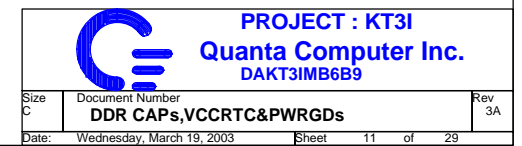


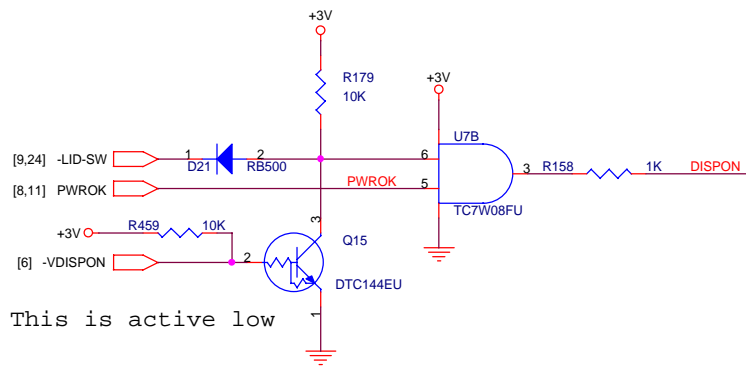


**PROJECT : KT3I**  
**Quanta Computer Inc.**  
**DAKT3IMB6B9**

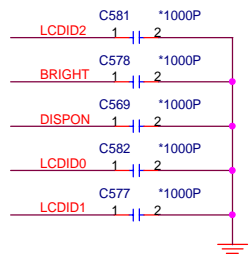
Size	Document Number	Rev
	<b>M1535+(IDE,FDD)</b>	3C
Date:	Wednesday, March 19, 2003	Sheet 9 of 29



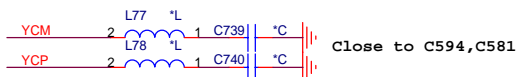




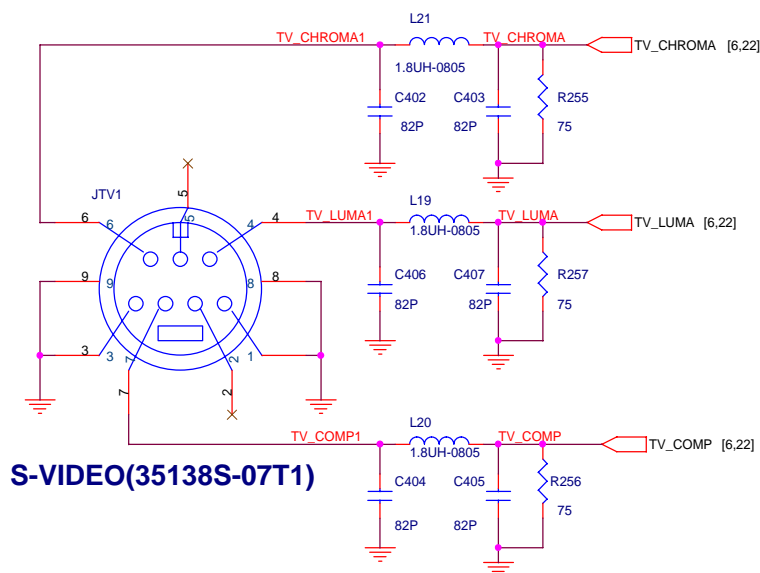
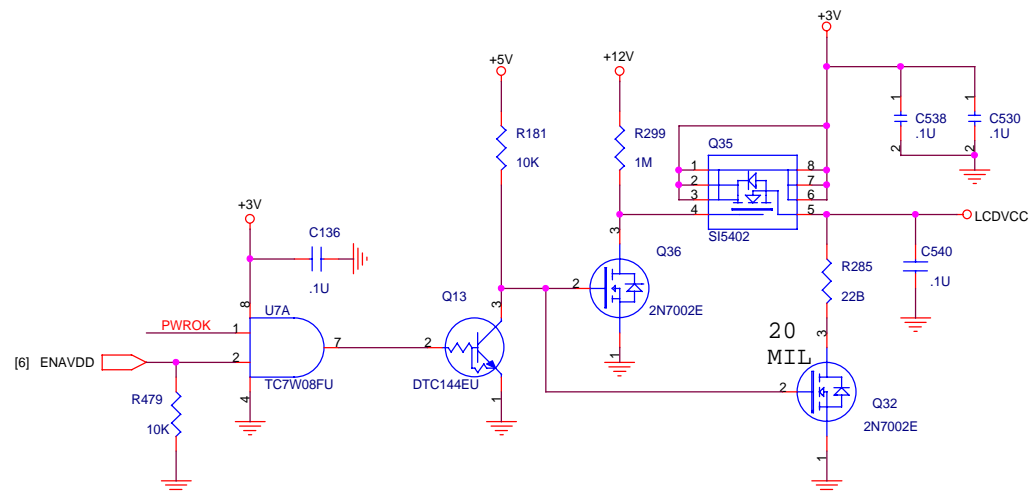
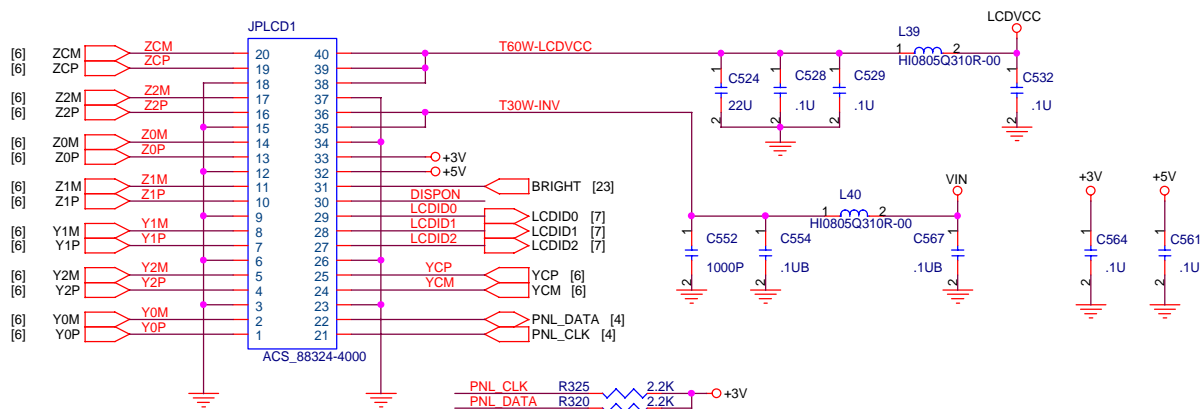
This is active low



LCDID0	LCDID1	LCDID2	
1	1	1	Non SPWG XGA 1024*768 TFT
0	1	1	SXGA 1400*1050 TFT
1	0	1	SPWG XGA 1024*768 TFT



## LCD INTERFACE

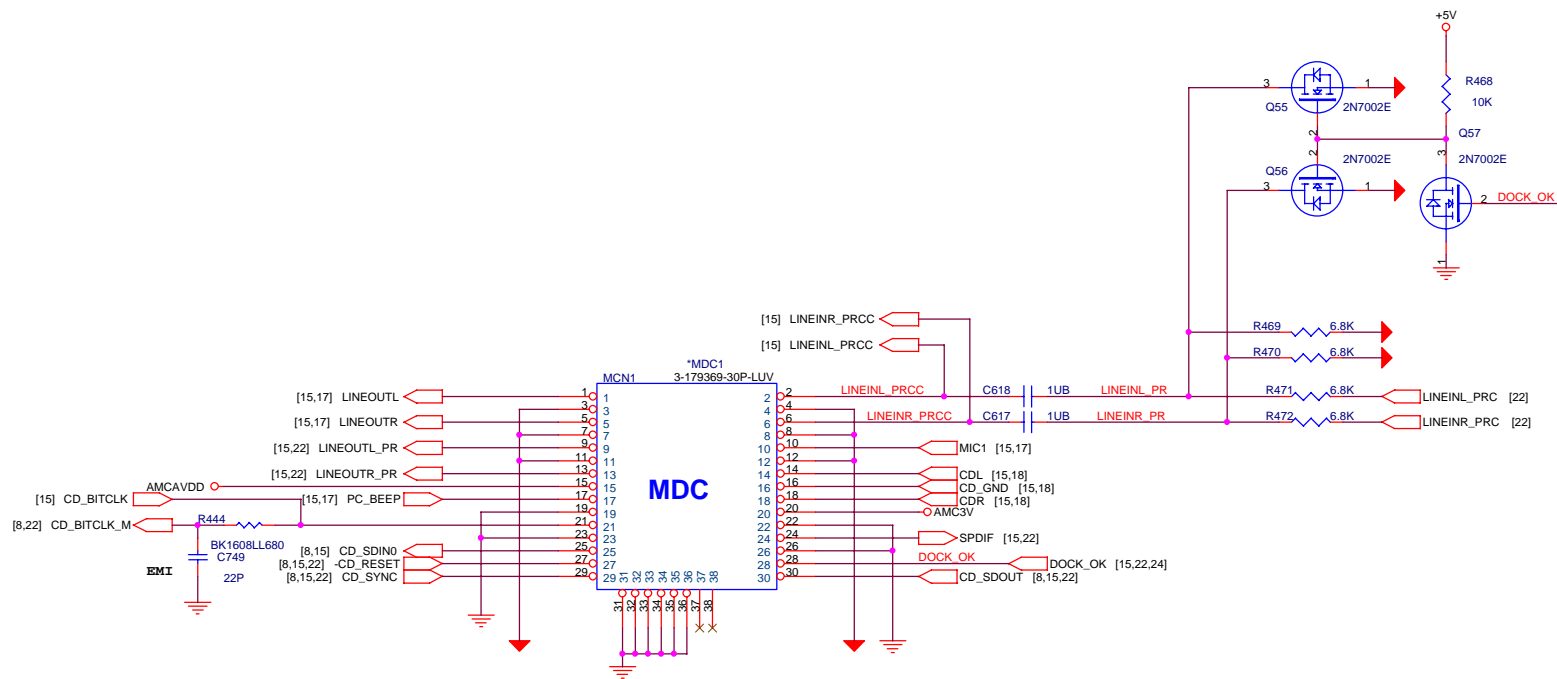


PROJECT : KT3I  
Quanta Computer Inc.  
DAKT3IMB6B9



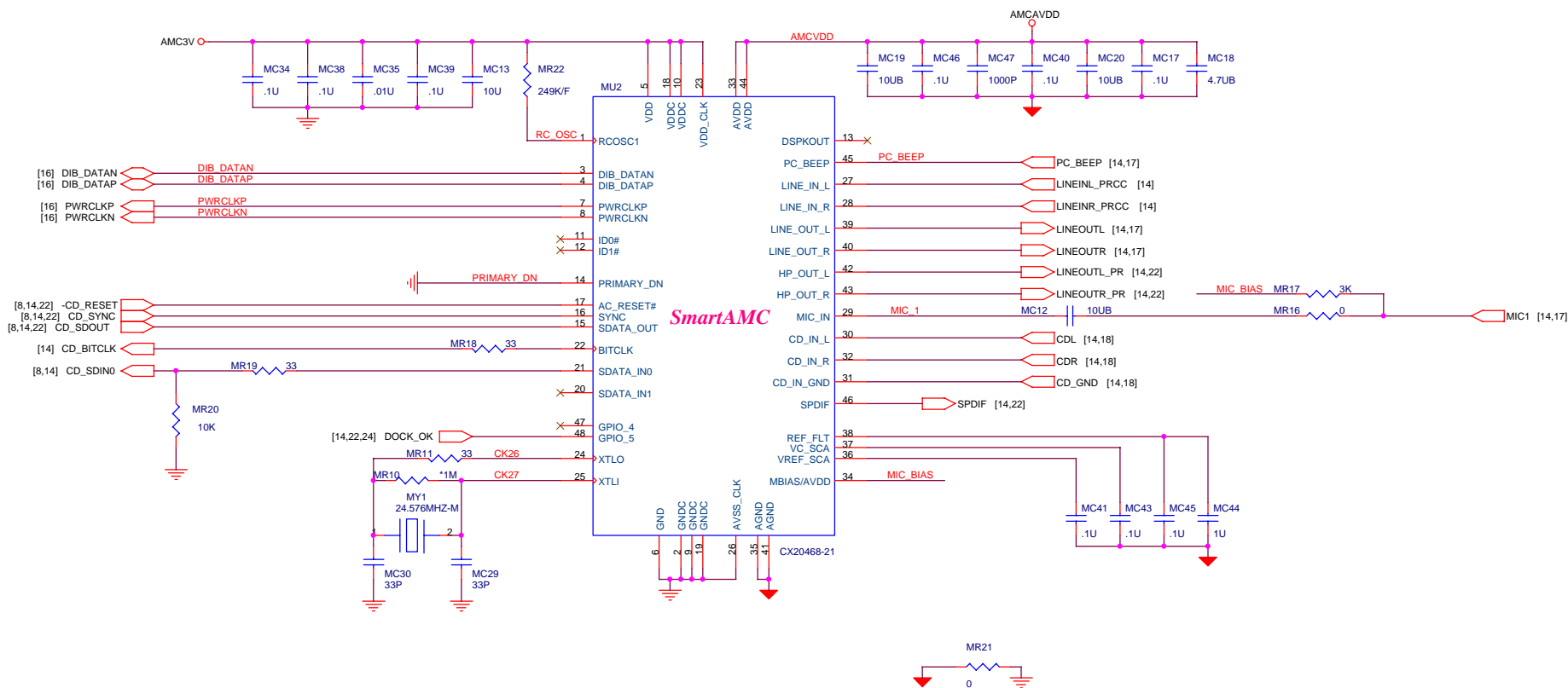


	DEFEATURE	FULL FUNCTION
R468	NO INSTALL	INSTALL
R469	0 OHM	6.8K
R470	0 OHM	6.8K
R471	NO INSTALL	INSTALL
R472	NO INSTALL	INSTALL
Q55	NO INSTALL	INSTALL
Q56	NO INSTALL	INSTALL
Q57	NO INSTALL	INSTALL



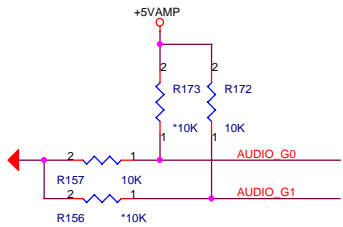
Treat MDC conn ,Smart DAA and CODEC as a daughter board

The AMC20493-001 modem is used for mother board family MBAMC20493-00.

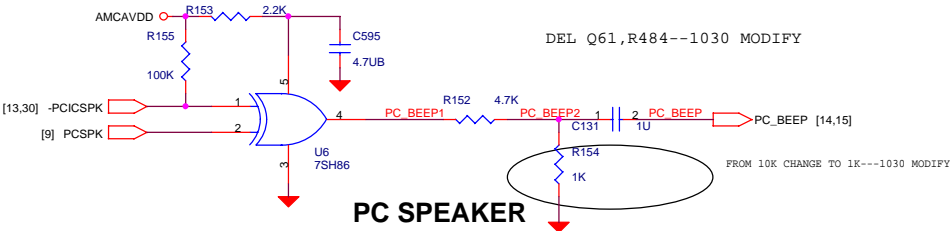
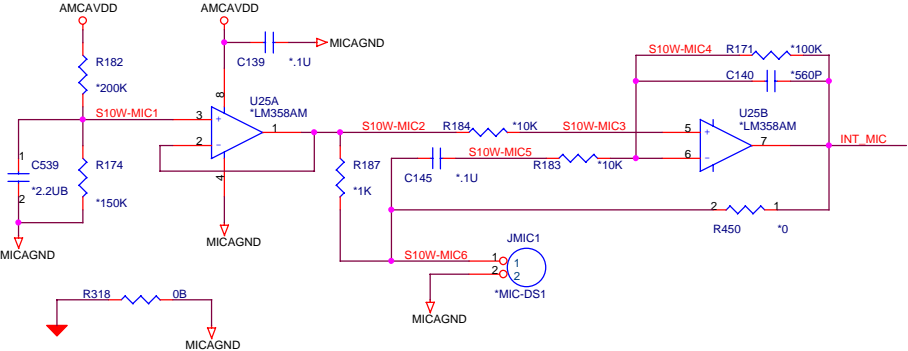
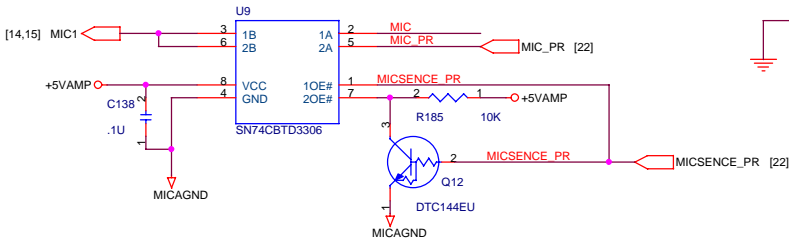




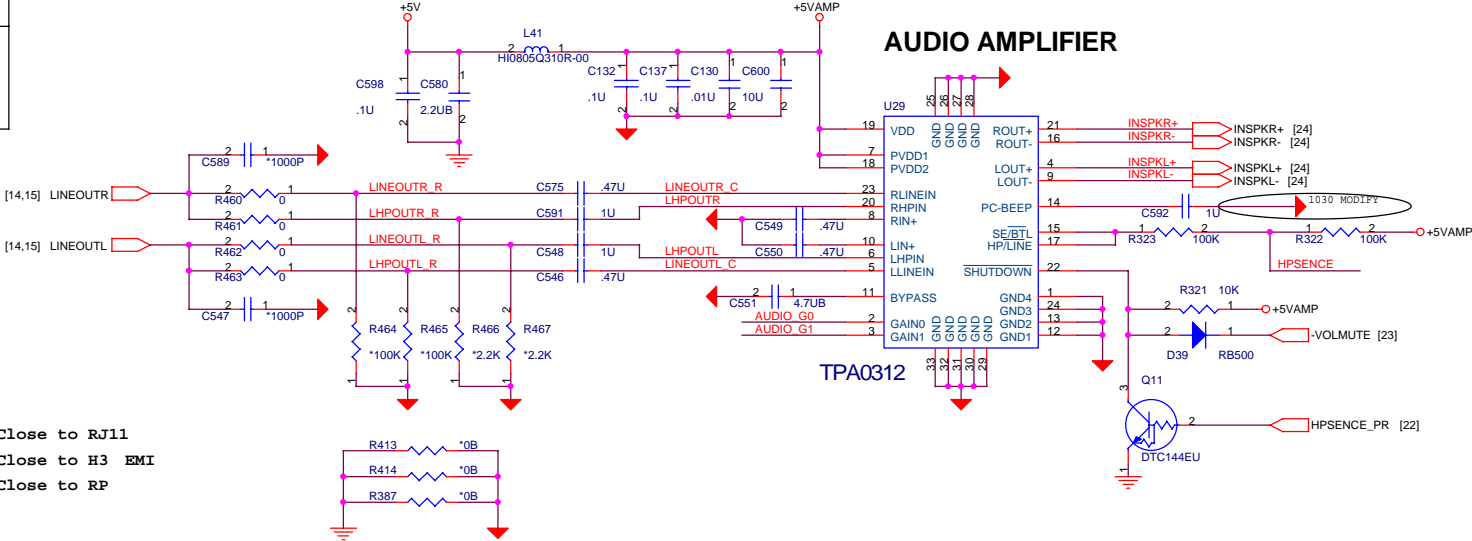
GAIN0	GAIN1	Av
0	0	6dB
0	1	10dB
1	0	15.6dB
1	1	21.6dB



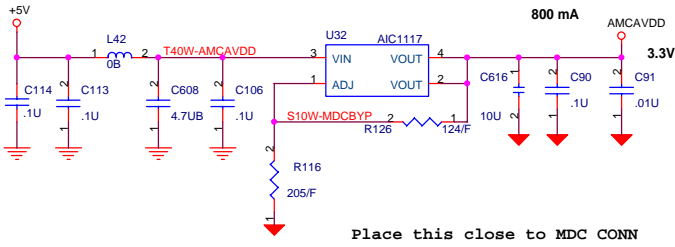
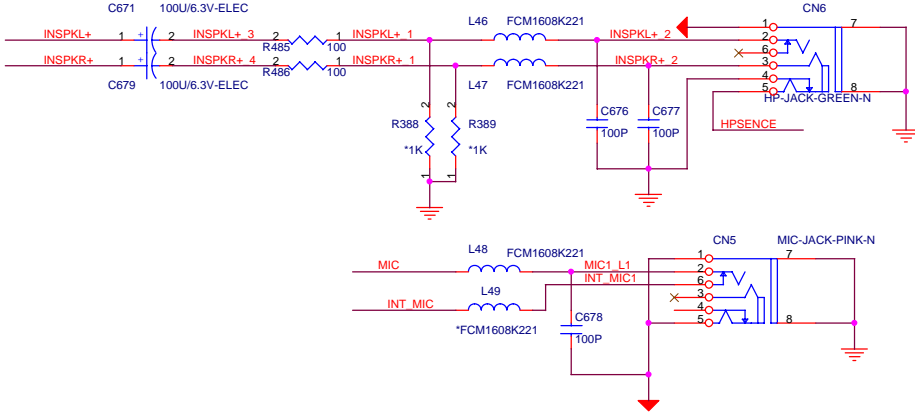
MIC\_PR  
Close to RJ11  
Close to H3 EMI  
Close to RP




PC SPEAKER



AUDIO AMPLIFIER



Place this close to MDC CONN



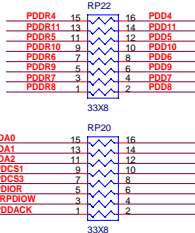
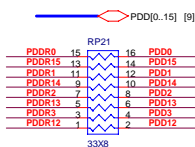
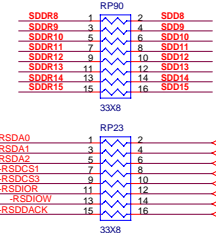
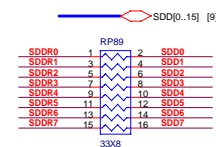
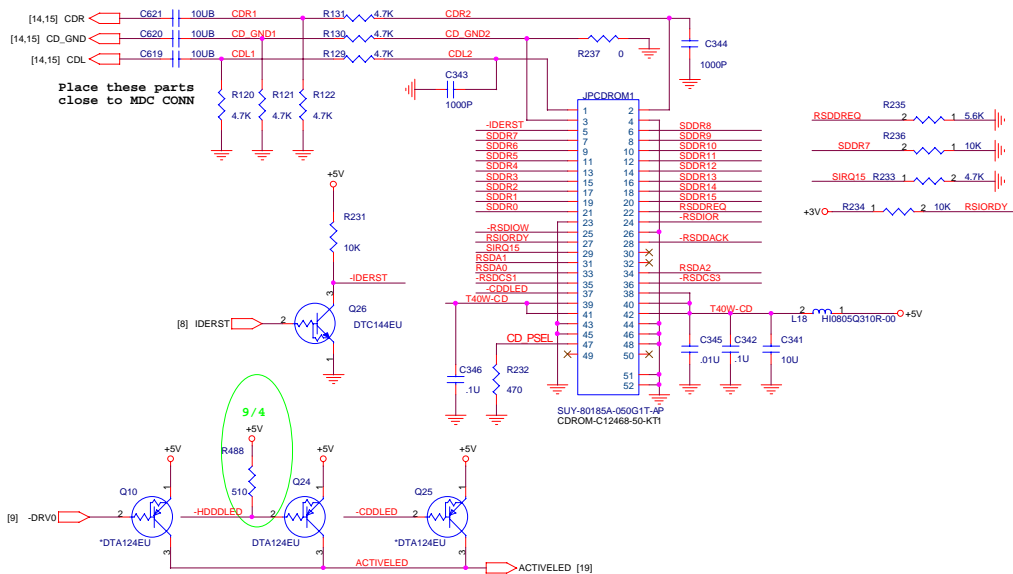
**PROJECT : KT3I**

**Quanta Computer Inc.**

**DAKT3IMB6B9**

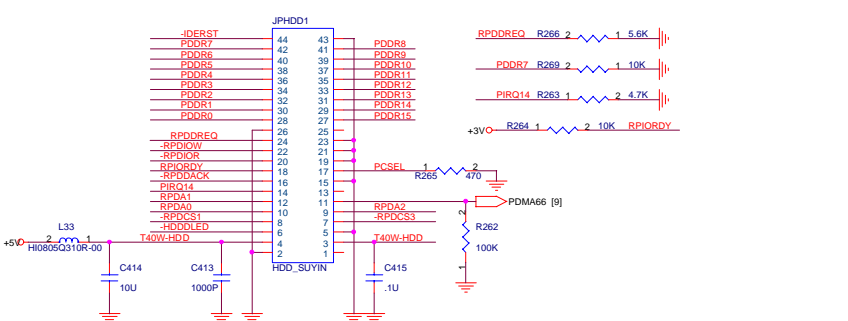
Size Custom	Document Number	Rev
	<b>TPA0312&amp;Audio Jack</b>	<b>3D</b>
Date: Wednesday, March 19, 2003	Sheet 17 of 29	

## CD-ROM CONNECTOR

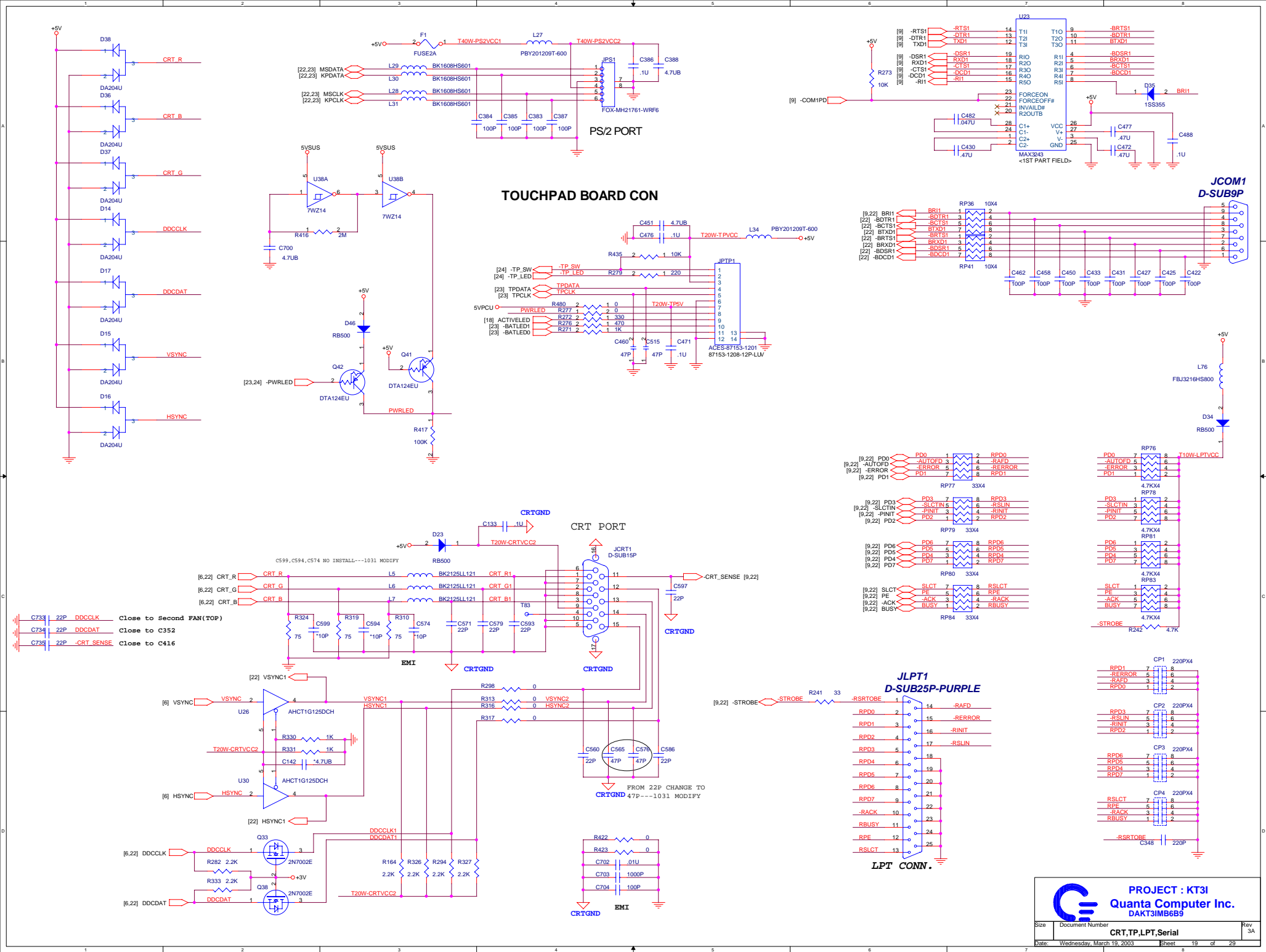


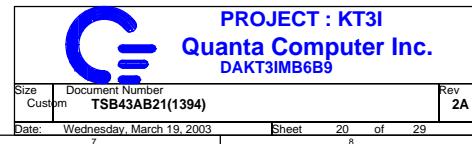
Place these close to IDE CONN

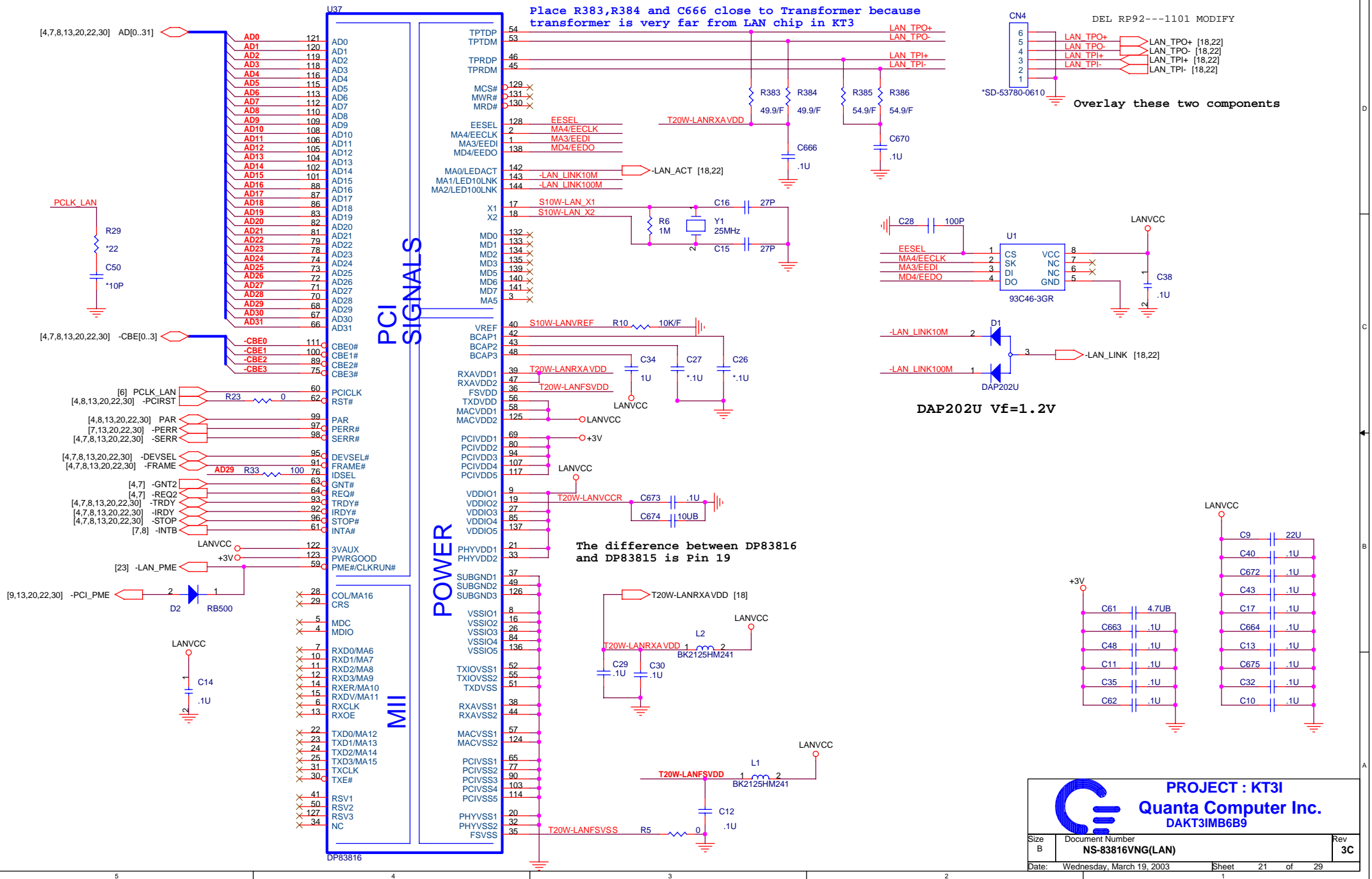
## HDD CONNECTOR

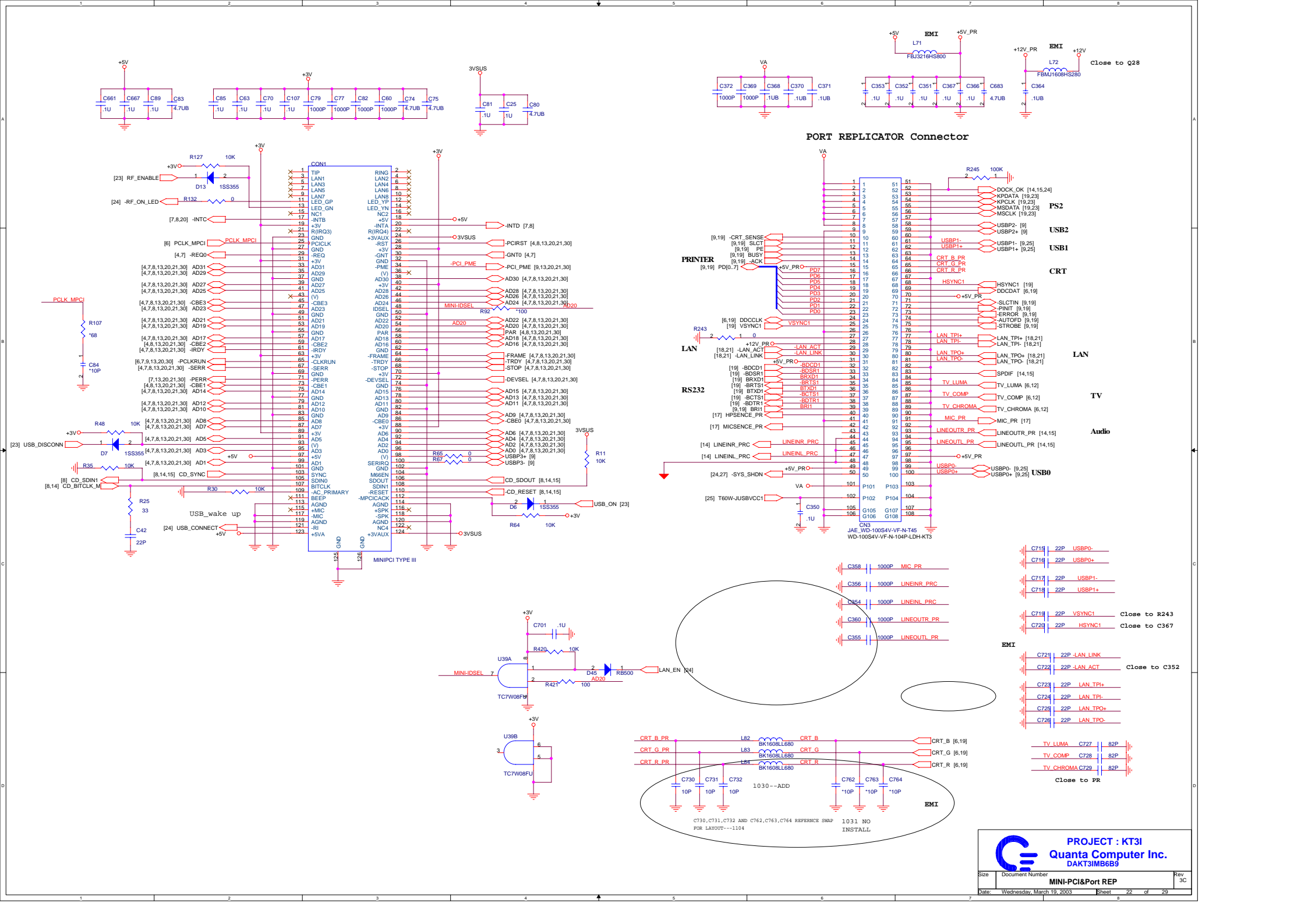


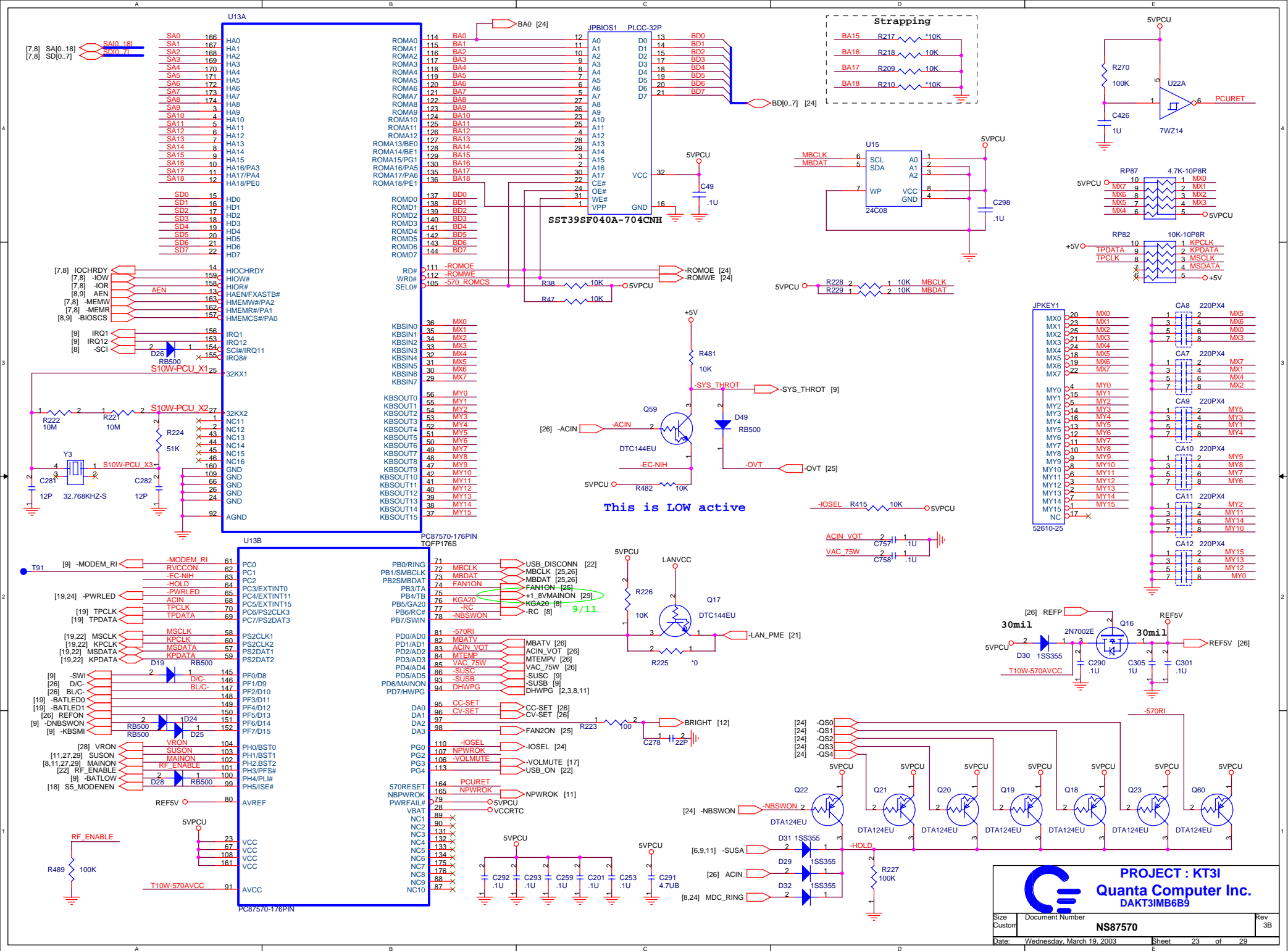






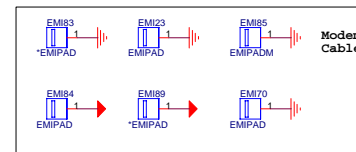
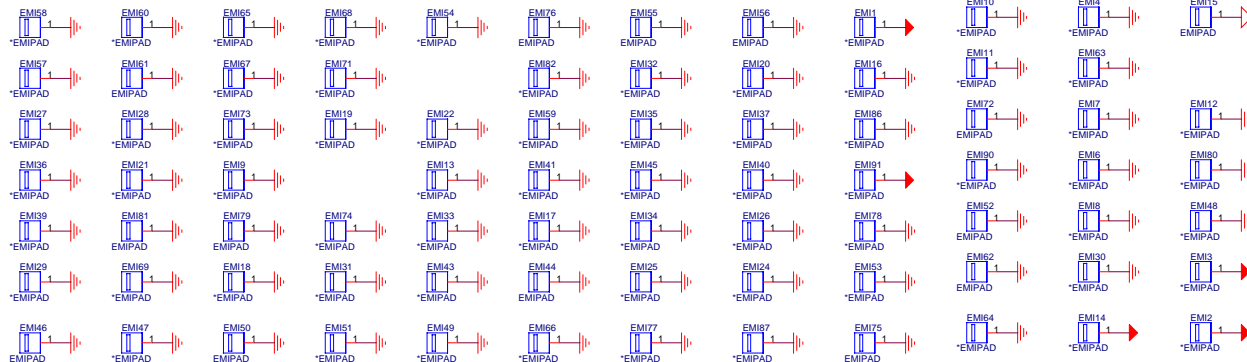
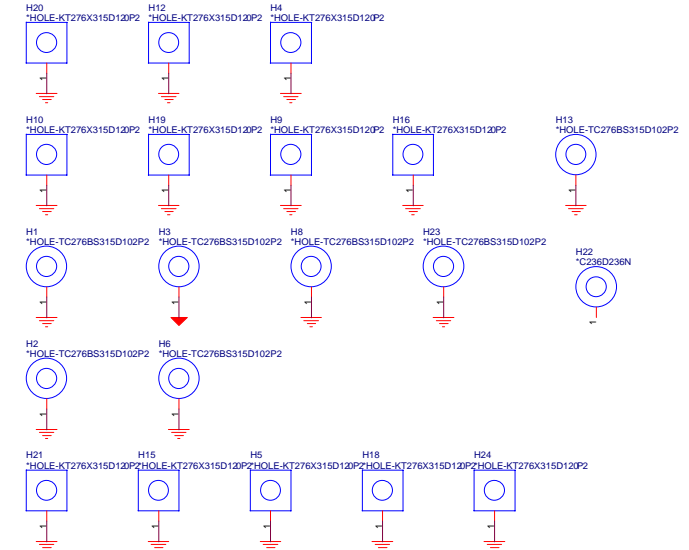
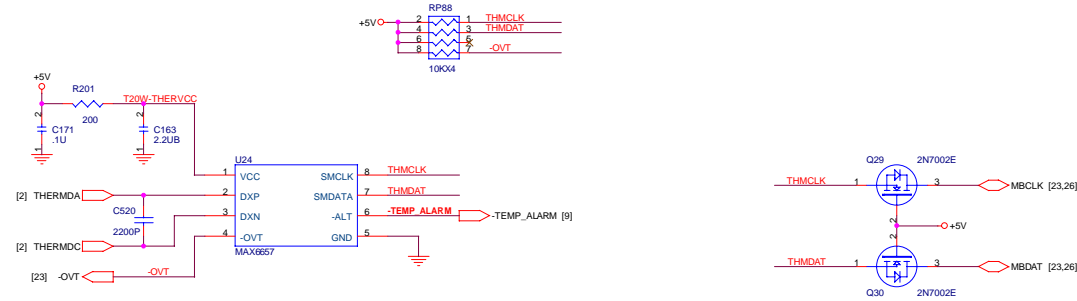
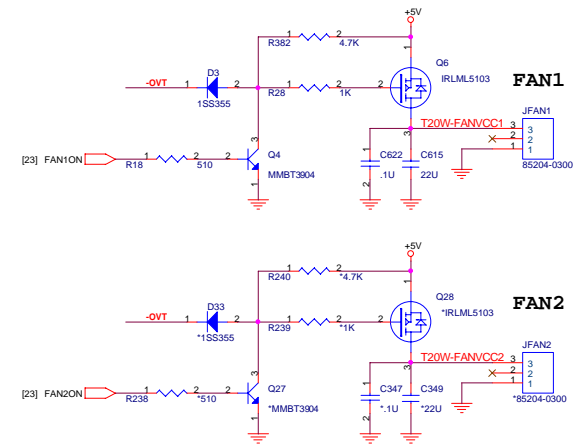
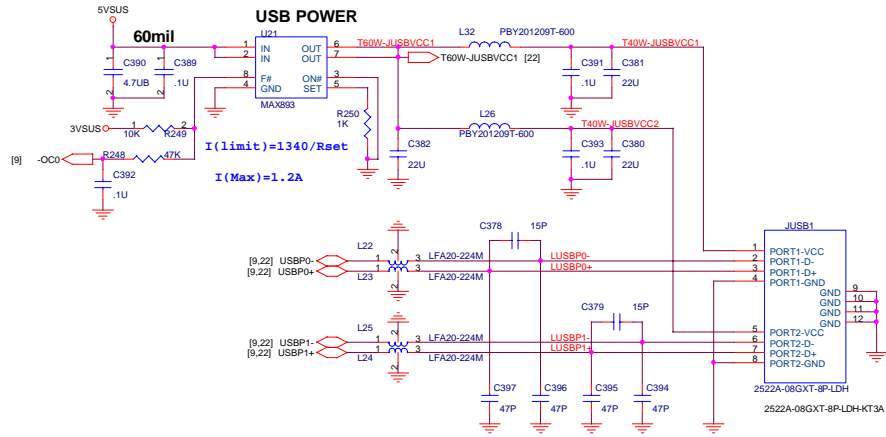


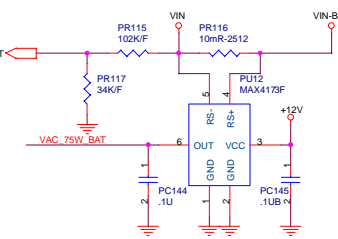
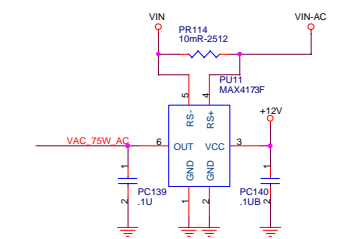
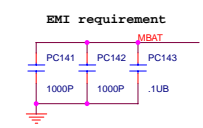
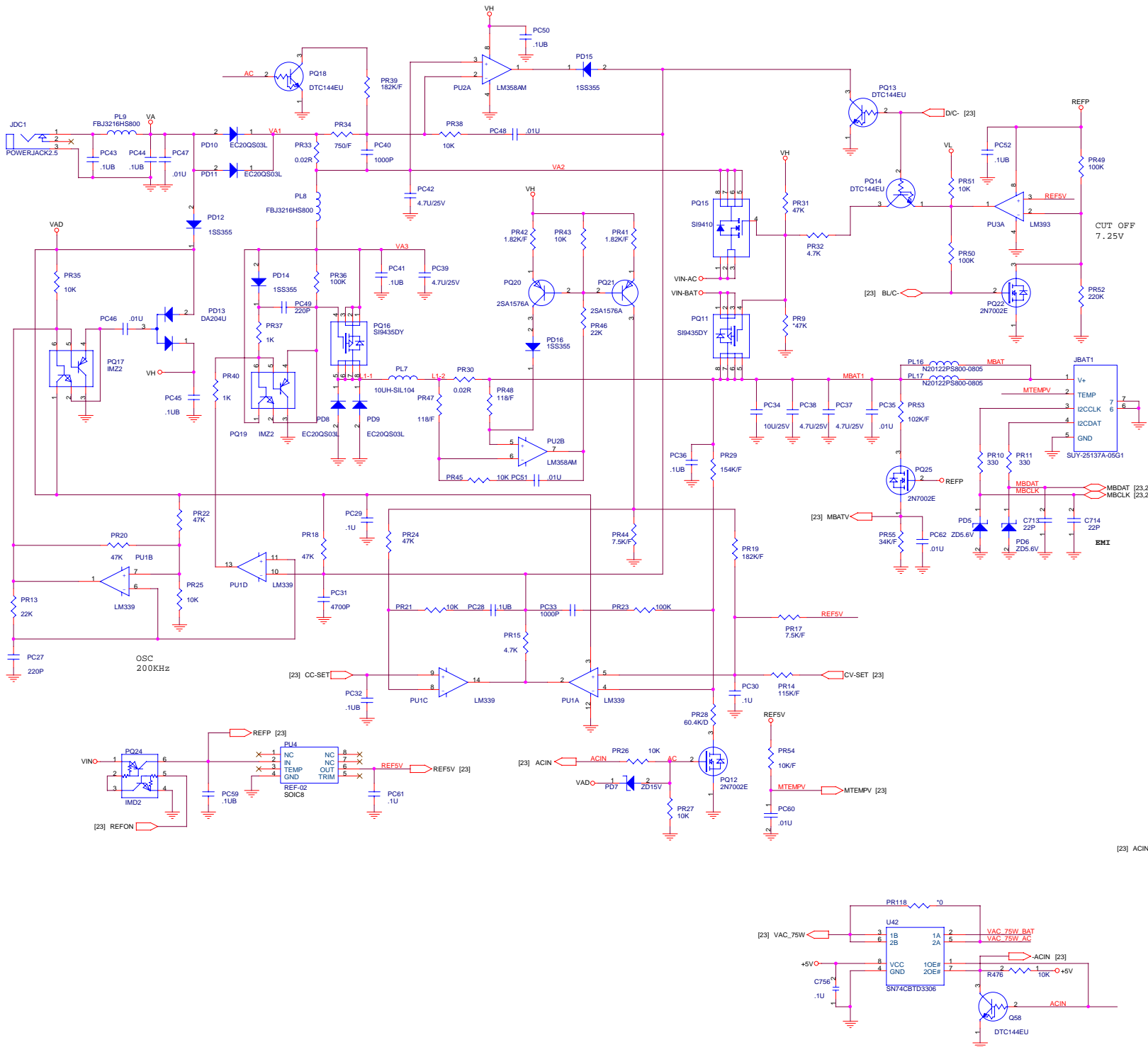


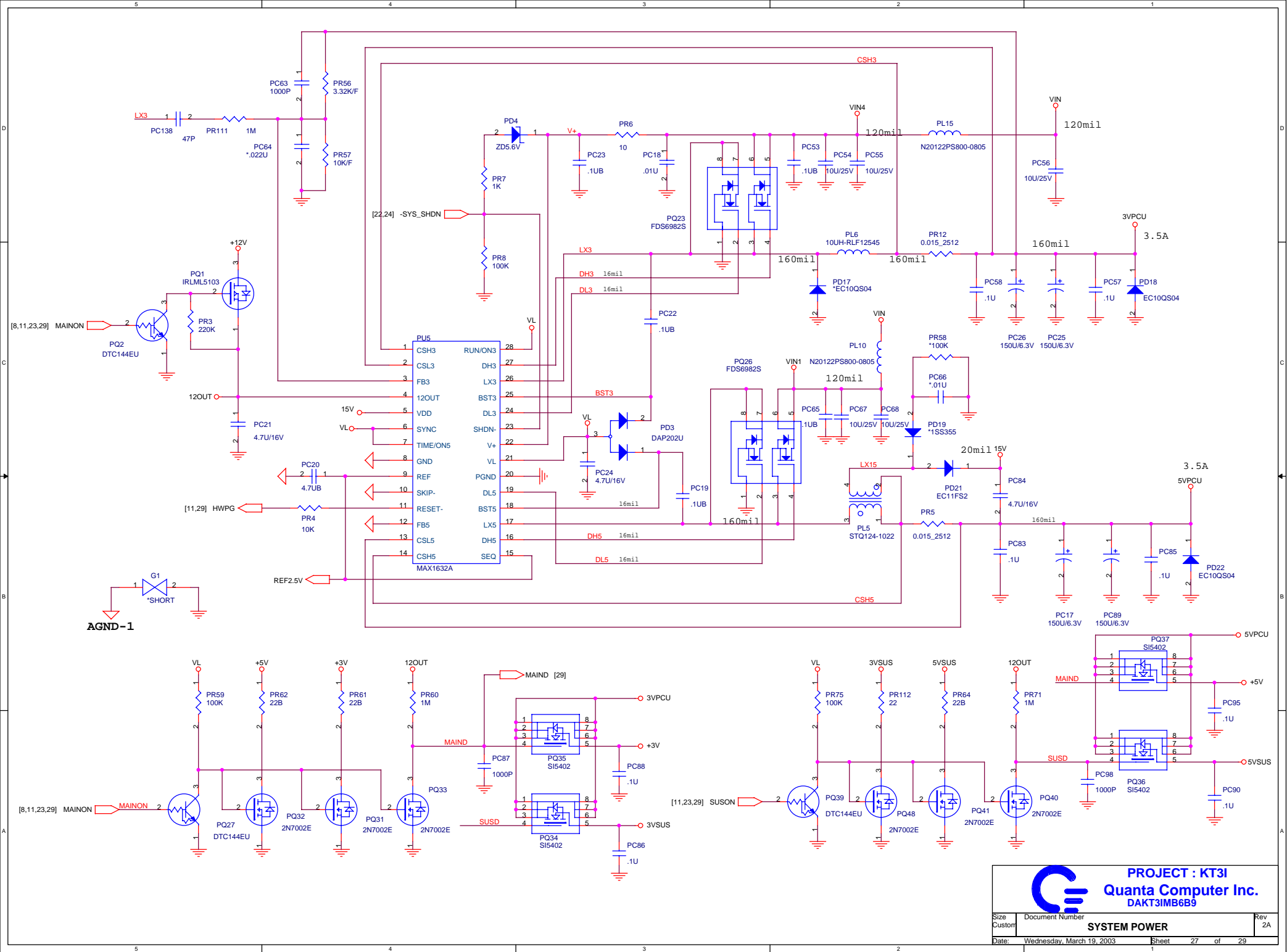












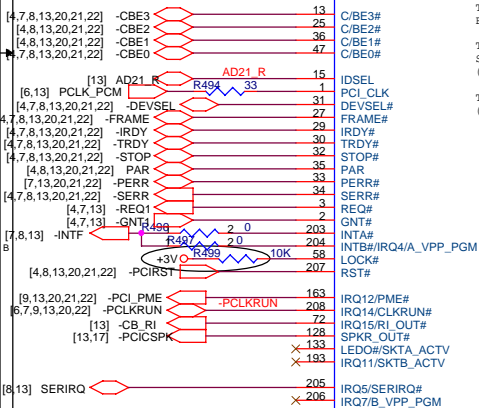








[13] CB\_RSMRST#  CB\_RSMRST# R491 1  2



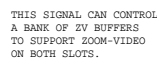
NOTES:

THE SERIAL IRQ SIGNAL MUST BE  
PULLED-UP BY 10K ON THE MLB.

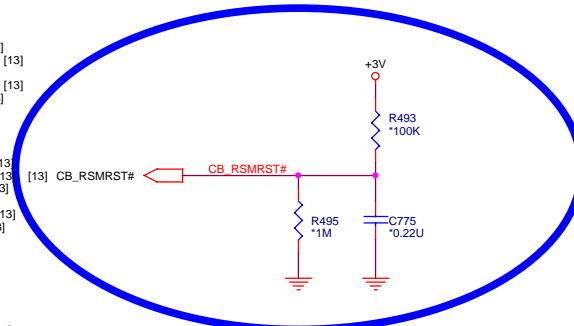
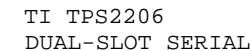
THE TWO SOCKET ACTIVITY SIGNALS MAY  
BE ORED TOGETHER FOR A SINGLE SIGNAL.

THE STRAPPING RESISTORS ON SLATCH AND  
SDATA CONFIGURE 026933 FOR SERIAL POWER.  
(SEE BOTTOM OF PAGE)

THE 026933 DEFAULTS TO PCI INT. MODE.  
(The BIOS must program PCI/WAY mode)



SERIAL POWER CONTROL



PROJECT : KT3I  
Quanta Computer Inc.  
DAKT3IMB6B9

PCMCIA-OZ6933

Rev  
2A

Date: Wednesday, March 19, 2003 Sheet 30 of 30